



Service Advisory

(Attachments)

MTD-092

Models Affected: OEM-190-032 and 190-032-101
Serial Number Range Affected: N/A
Date: 10/01/2008
Subject: 42" 2-Stage Snow Thrower Attachment Heat Shield

ACTION REQUIRED: This advisory is **INFORMATIONAL ONLY**

PURPOSE: This informational advisory addresses the 42" 2-stage snow thrower attachment's heat shield usage and rider model configuration.

COMPLIMENTARY ADVISORY: MTD-030A

DISCUSSION:

For riders that have the raised side discharge muffler, see Figure 1, the snow thrower's heat shield, see Figure 2, is not required. The heat shield should be removed before attaching the snow thrower attachment to the rider.

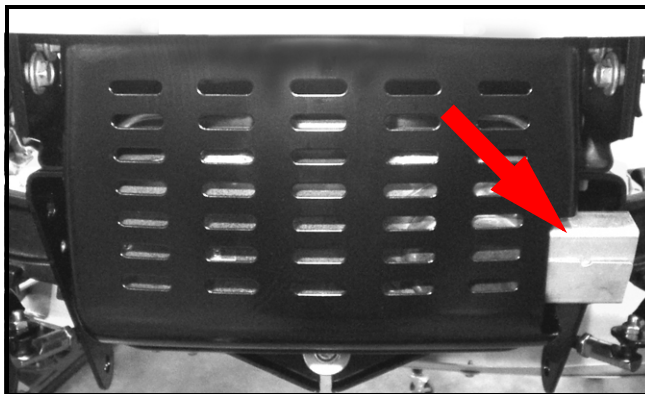


FIGURE 1

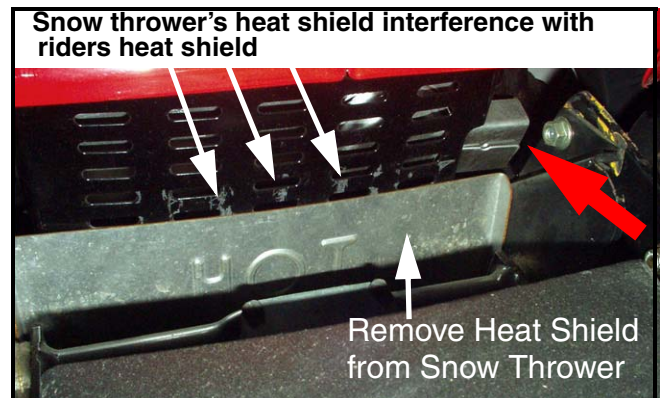


FIGURE 2

For riders that have the lower forward discharge muffler, see Figure 3, the snow thrower's heat shield must remain on the snow thrower attachment to protect the gear box.

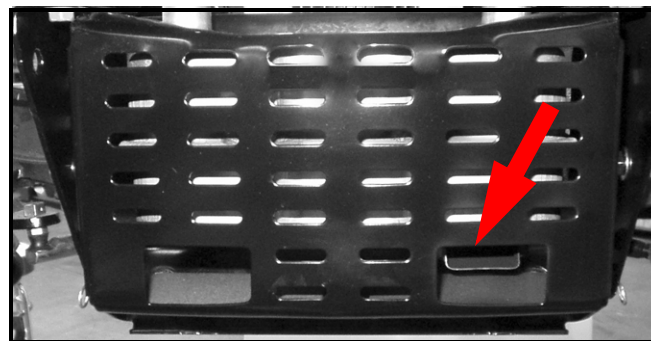


FIGURE 3