



# Service Kit

## 753-05465

Date: 11/16/2006 (Revised 11/19/2009)

Subject: Service Replacement for the  
618-0657 Transmission

Models Not Applicable  
Affected:

**Read through and understand these instructions completely before proceeding with repair.**

**PURPOSE:** This kit is the service replacement for the 618-0657 transmission which is no longer available. The 618-0657 was used on 400 and 500 series walk behind mowers.

**NOTE:** These materials are prepared for use by trained technicians who are experienced in the service and repair of equipment of the kind described in this publication, and are not intended for use by untrained or inexperienced individuals. Such individuals should seek the assistance of an authorized service technician or dealer.

**NOTE:** *Save this Instruction Sheet. Refer to it when ordering replacement parts.*

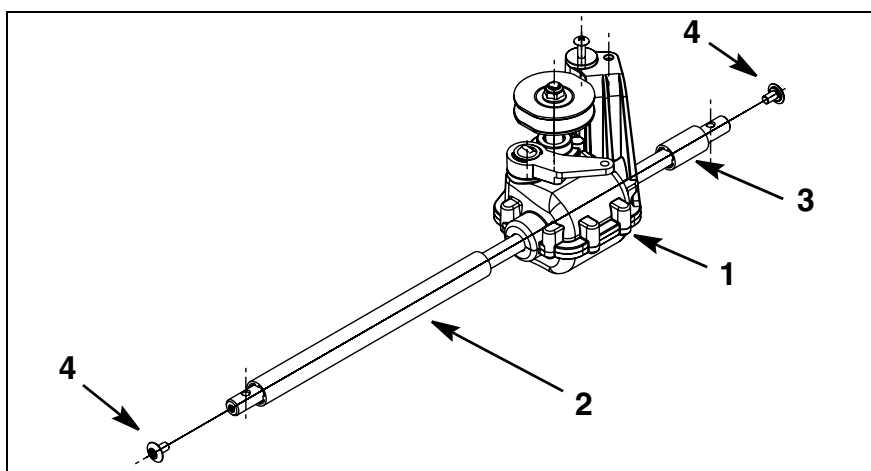


FIGURE 1

### Service Kit Contents

(See Figure 1)

ITEM NO.	PART NUMBER	QTY	DESCRIPTION
1	618-04376B	1	TRANSMISSION ASM: SP 21"
2	750-04594	1	SPACER: .520 ID x 8.98 LG
3	750-04595	1	SPACER: .520 ID x 1.4 LG
4	710-04531	2	SCREW: 1/4"-20 x .390:PANTRXI (PATCH)
5	*	1	THIS INSTRUCTION SHEET

\* - Not Available Separately

1. The new 618-04376B transmission's axle does not use an "E" ring to retain the pinion gears to the axle ends as did the 618-0657 transmission. The supplied patch lock screws are the new method of retaining the gears.

2. Lubricate under the pinion gears (both ends) with never-seez/anti-seize. Be careful not to get the never-seez/anti-seize into the threaded holes on the axle ends.