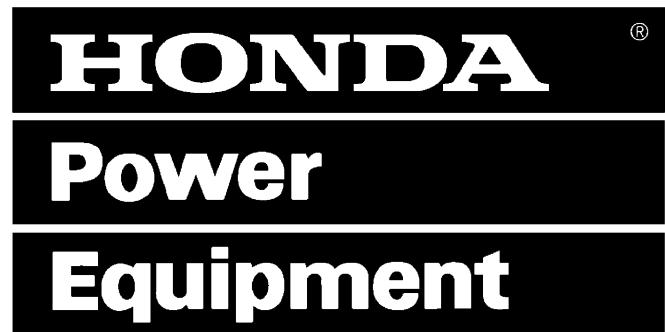


General Purpose Engine

GX160K1

(TYPE QX2, VOLUME 1 OF 2)



Parts Catalog

APRIL, 2004

American Honda Motor Co., Inc.

For Discount Troy Bilt Parts Call 606-678-9623 or 606-561-4983

TABLE OF CONTENTS

Introduction	Grid / Page	
• HOW TO USE THIS CATALOG	A2	4
• SERIAL NUMBERS	A3	6
• BULK HOSE PART NUMBER PATTERN.....	A3	7
• MASTER INDEX	A4	8
Part Groups		
• ENGINE SECTION	1-C1	1-1
Index		
• PART NUMBER INDEX	B1	2-1
• DESCRIPTION INDEX	1-E1	3-1

HOW TO USE THIS CATALOG

CATALOG PAGE BREAKDOWN (Generic layout-sample data only)

Ref.	Description	Mod	Type	Engine Serial Number	ORG	QTY	Part Number	H/C
1	COVER SET, CYLINDER HEAD	A	b	15240057 -----	JPN	1	12310-PE2-020	2031797
	COVER SET, CYLINDER HEAD			----- 12234811	USA	1	12310-PE2-030	2210888

KEY TO CATALOG PAGE BREAKDOWN

1. **Ref.** - Reference numbers correspond to the reference numbers on the illustrations. All illustrations are representative only and do not necessarily correspond exactly to the actual part. "NI" signifies the part is not illustrated.
2. **Description*** - Describes the part for the related part number.
Abbreviations:

ASSY.	- Assembly	V	- Volt
COMP.	- Complete	W	- Watt
L(100L)	- Link(100Links)	A.C.	- Alternating Current
R.	- Right	D.C.	- Direct Current
L.	- Left	KPH	- Kilometers Per Hour
IN.	- Inlet	MPH	- Miles Per Hour
EX.	- Exhaust	A.M.	- Attaching Mark
FR.	- Front	T.M.	- Transcript Mark
RR.	- Rear	A	- Ampere
HEX.	- Hexagonal	WL	- With Labeling
STD.	- Standard	WOL	- Without Labeling
MM	- Millimeter	T (22T)	- Tooth
G	- Gram	C.D.I.	- Capacitive Discharge Ignition
		G.F.C.I.	- Ground Fault Circuit Interruptor
3. **Model*** - Model indicator code is unique per catalog (not consistent with other catalogs).
4. Each catalog will be represented with applicable model indicators and models.
5. **Serial Number** - Applies to Engine or Frame serial numbers depending on the section. The serial numbers of the vehicle (frame, engine, carburetor) should be checked prior to ordering parts for a specific unit. In cases where a part has been modified, the serial number of the vehicle bearing the modification is listed in the 'SERIAL NUMBER' column. The modification parts are controlled by each pertinent serial number below.
Engine serial number - Engine group parts (Block numbers beginning with 'E').
Carburetor identification number - Carburetor component parts.
Frame serial number - Frame group parts (Block numbers beginning with 'F').
 A serial number chart and serial number locations are provided.
Note - Some models may be controlled by one serial number only.
6. **Type*** - Applicable model Type is defined in the serial number chart.

7. **ORG*** - Manufacturing origin of the unit.
8. **QTY** - Quantity required per unit as specified.
 A. "AR" in place of the quantity indicates AS REQUIRED.
 B. "(") Parentheses in the quantity required indicate "optional".
9. **Part Number** - Part number corresponds to the reference number and application. Several part numbers may be listed under one (1) reference number. For your convenience the current supersede chain, as of print date, has been listed. Supersede chains are subject to change without notice.
10. **H/C** - The Honda Code and Part Number share a 1 to 1 relationship.

MAKE-UP OF PART NUMBERS

All parts are classified into two groups consisting of "GENERAL PARTS" and "STANDARD PARTS". All parts are numbered in accordance with the system described below:

General Parts
 Example: Driver Seat Assembly Part No. 77400-634-671ZA
 Function No. 77
 Component No. 400
 Model Code No. -634-
 Modification Process Design 671
 Color Code** ZA

Additional Information - The section index located at the bottom of each microfiche grid lists section titles. The Engine and Frame sections have separate section indexes.

*When columns become full, additional data is displayed on a second line.

**The color code at the end of a part number indicates a color. Color codes such as ZA, ZB, ZC . . . , except ZZ, do not indicate the actual color. Actual colors are represented in code, between asterisks in the part description.

Note:

Additional Information

Ref.
 Reference numbers may skip number sequence because they apply in other applications.

Chapter Table of Contents

Some Page Titles are numbered, such as Air Cleaner (1), Air Cleaner (3) or Muffler (2) or Muffler (4), etc., may skip numbering sequence because they apply in other volumes of the same model (s).

This page intentionally left blank.

SERIAL NUMBERS

Models and applicable serial numbers

Models and applicable serial numbers given in this parts catalog can be identified as follows.

Model	Type	Applicable Engine Serial No.	Applicable Frame Serial No.	Applicable Carburetor Identification
GX160K1	QX2	GC02-2000001~	———	BE65B A
GX160K1	QX2	GC02-2000001~	———	BE65B B

BULK HOSE PART NUMBER PATTERN

Construction of Fuel and Vacuum Hose Part Number

Example: 9 5 0 0 1 - 7 5 0 0 1 - 4 0 M

Roll Hose

All roll hose part numbers have an "M" in this position

Appearance Code

Fuel Hose:

- 2 = Red, braided exterior
- 3 = Red
- 4 = Ash Gray with red stripe
- 5 = Black, braided interior
- 6 = Black

Vinyl Hose:

- 1 = Ash Gray
- 2 = Black
- 3 = Light Red
- 6 = Light Red
- 7 = Pale Black

Vacuum Hose:

- 1 = Ash Gray
- 2 = Ash Gray
- 3 = Black
- 5 = Black

Length

Cut Hose length is in *Millimeters (mm)*

Bulk Hose length is in *Meters (M)*

Inside Diameter

Fuel and Vacuum Hose

- | | |
|-----------------------|------------------------------|
| 35 = 3.5 mm | 11 = 11 mm |
| 45 = 4.5 mm | 91 = 12 (outside dia. 15) mm |
| 50 = 5.0 mm | 92 = 12 (outside dia. 16) mm |
| 55 = 5.3 mm or 5.5 mm | 12 = 12 (outside dia. 17) mm |
| 65 = 6.5 mm | 14 = 14 mm |
| 70 = 7.0 mm | 17 = 17 mm |
| 75 = 7.3 mm or 7.5 mm | |
| 80 = 8.0 mm | |

ID./OD. Code : Vinyl Hose

- | | | |
|--------------------------|----------------------------|----------------------------|
| 01 = ID. 2.9, OD. 6.8 mm | 14 = ID. 6.0, OD. 9.0 mm | 37 = ID. 11.0, OD. 15.0 mm |
| 03 = ID. 3.0, OD. 6.0 mm | 17 = ID. 7.0, OD. 9.0 mm | 38 = ID. 12.0, OD. 13.0 mm |
| 05 = ID. 3.5, OD. 6.5 mm | 19 = ID. 7.0, OD. 11.0 mm | 39 = ID. 12.0, OD. 14.0 mm |
| 07 = ID. 4.0, OD. 7.0 mm | 21 = ID. 8.0, OD. 9.0 mm | 40 = ID. 12.0, OD. 16.0 mm |
| 08 = ID. 4.5, OD. 6.5 mm | 23 = ID. 8.0, OD. 12.0 mm | 43 = ID. 13.0, OD. 15.0 mm |
| 09 = ID. 4.5, OD. 8.0 mm | 25 = ID. 9.0, OD. 11.0 mm | 45 = ID. 14.0, OD. 18.0 mm |
| 12 = ID. 5.0, OD. 7.0 mm | 27 = ID. 9.0, OD. 13.0 mm | 50 = ID. 16.0, OD. 19.0 mm |
| 10 = ID. 5.0, OD. 8.0 mm | 33 = ID. 10.0, OD. 14.0 mm | 55 = ID. 17.5, OD. 20.5 mm |
| 11 = ID. 5.0, OD. 9.0 mm | 36 = ID. 11.0, OD. 13.0 mm | 60 = ID. 22.0, OD. 27.0 mm |

Hose Type:

- 1 = Fuel Hose
- 3 = Vinyl Hose
- 5 = Vacuum Hose

CAUTION: Never use vacuum / or vinyl hose in place of fuel hose or vice versa

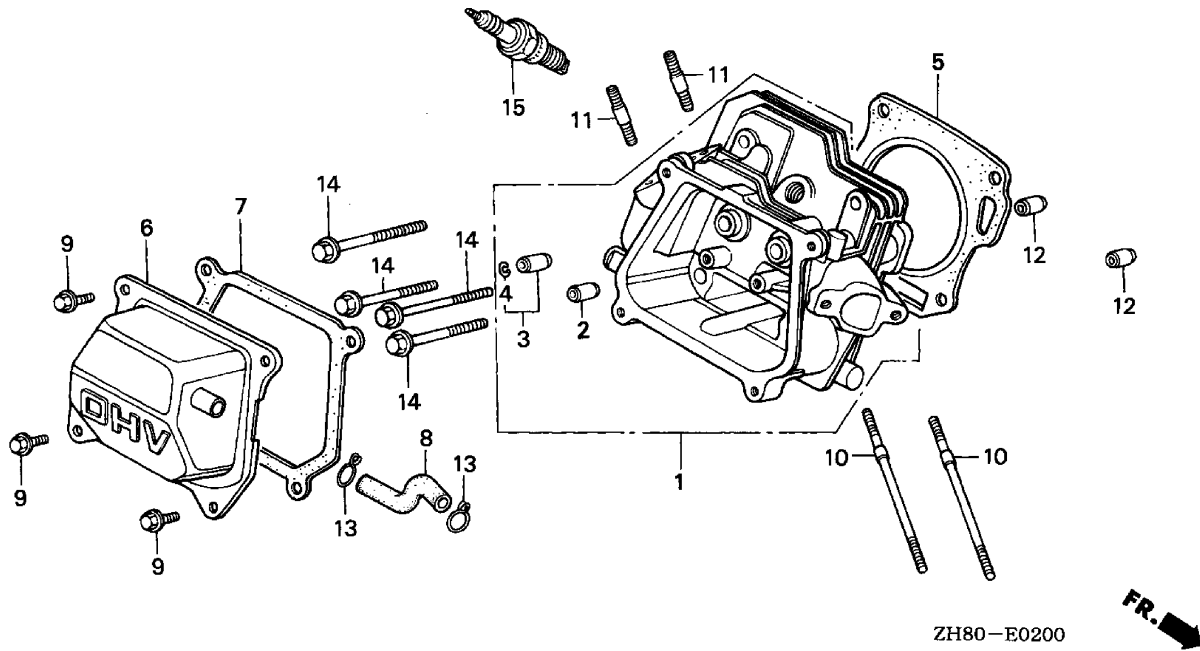
MASTER INDEX

Title	Grid	Page	Title	Grid	Page
ENGINE SECTION					
CYLINDER HEAD	1-C1	1-2			
CYLINDER BARREL	1-C1	1-3			
CRANKCASE COVER (1)	1-C2	1-5			
CRANKSHAFT (1)	1-C3	1-6			
PISTON	1-C3	1-7			
CAMSHAFT	1-C4	1-9			
RECOIL STARTER (1)	1-C5	1-10			
FAN COVER	1-C6	1-12			
CARBURETOR (3)	1-C6	1-13			
AIR CLEANER (1)	1-C7	1-15			
MUFFLER (1)	1-C8	1-16			
FUEL TANK (2)	1-C8	1-17			
FLYWHEEL	1-D1	1-18			
IGNITION COIL	1-D1	1-19			
CONTROL (1)	1-D2	1-20			
LABEL (1)	1-D3	1-22			
GASKET KIT	1-D3	1-23			

ENGINE SECTION
Chapter Table of Contents

Page Title	Grid	Page
CYLINDER HEAD	1-C1	1-2
CYLINDER BARREL	1-C1	1-3
CRANKCASE COVER (1)	1-C2	1-5
CRANKSHAFT (1)	1-C3	1-6
PISTON	1-C3	1-7
CAMSHAFT	1-C4	1-9
RECOIL STARTER (1)	1-C5	1-10
FAN COVER	1-C6	1-12
CARBURETOR (3)	1-C6	1-13
AIR CLEANER (1)	1-C7	1-15
MUFFLER (1)	1-C8	1-16
FUEL TANK (2)	1-C8	1-17
FLYWHEEL	1-D1	1-18
IGNITION COIL	1-D1	1-19
CONTROL (1)	1-D2	1-20
LABEL (1)	1-D3	1-22
GASKET KIT	1-D3	1-23

CYLINDER HEAD



ZH80E0200

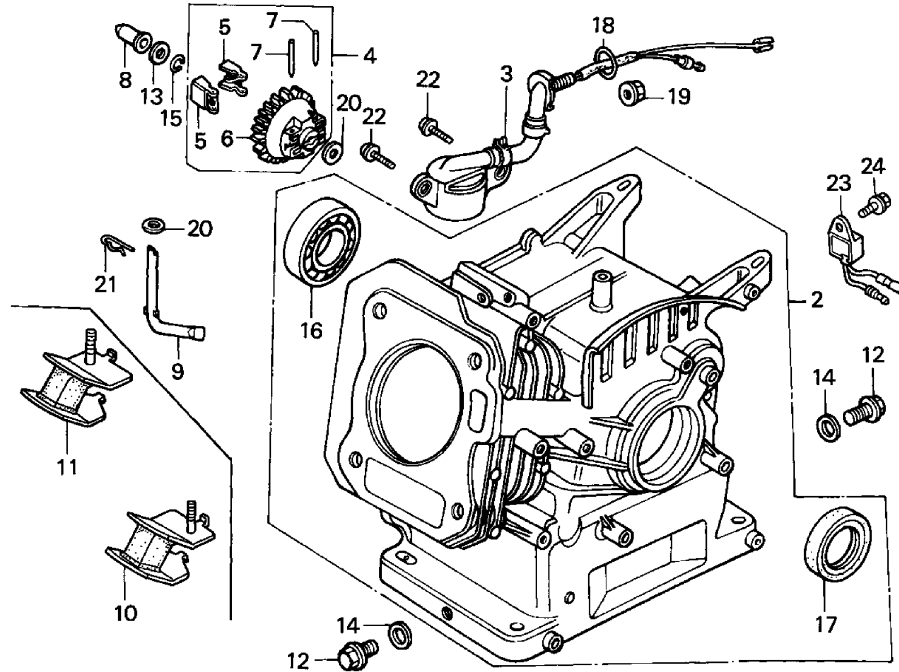
MODEL
A =GX160K1

TYPE
a =QX2

E-2

Ref	Description	Engine Serial Number		QTY	Part Number	H/C
		From	To			
1	CYLINDER HEAD.....	-----	-----	1	12210-ZH8-020	6779243
2	GUIDE, VALVE (OS)	-----	-----	(1)	12204-ZE1-306	4165874
3	GUIDE, EX. VALVE (OS)	-----	-----	(1)	12205-ZE1-315	1899848
4	CLIP, VALVE GUIDE	-----	-----	1	12216-ZE5-300	2399780
5	GASKET, CYLINDER HEAD	-----	-----	1	12251-ZF1-800	3683380
6	COVER, HEAD	-----	7638542	1	12310-ZE1-010	4725248
	COVER, HEAD	7638543	-----	1	12310-ZE1-020	6854921
7	GASKET, CYLINDER HEAD COVER	-----	-----	1	12391-ZE1-000	1426527
8	TUBE, BREATHER.....	-----	-----	1	15721-ZH8-000	3683497
9	BOLT, FLANGE (6X13)	-----	-----	4	90016-ZE1-000	1541002
10	BOLT, STUD (6X109).....	-----	-----	2	90043-ZE1-020	4588323
11	BOLT, STUD (8X32).....	-----	-----	2	90047-ZE1-000	1431097
12	PIN A, DOWEL (10X16)	-----	-----	2	94301-10160	0058206
14	BOLT, FLANGE (8X60)	-----	-----	4	95723-08060-00	1436591
15	SPARK PLUG (BPR5ES) (NGK)	-----	-----	(1)	98079-55846	1672443
	SPARK PLUG (W16EPR-U) (DENSO).....	-----	-----	(1)	98079-55855	1672450
	SPARK PLUG (BPR6ES) (NGK)	-----	-----	1	98079-56846	1441112
	SPARK PLUG (W20EPR-U) (DENSO).....	-----	-----	1	98079-56855	1441120

CYLINDER BARREL



FR. ZH80-E0300

ZH80E0300

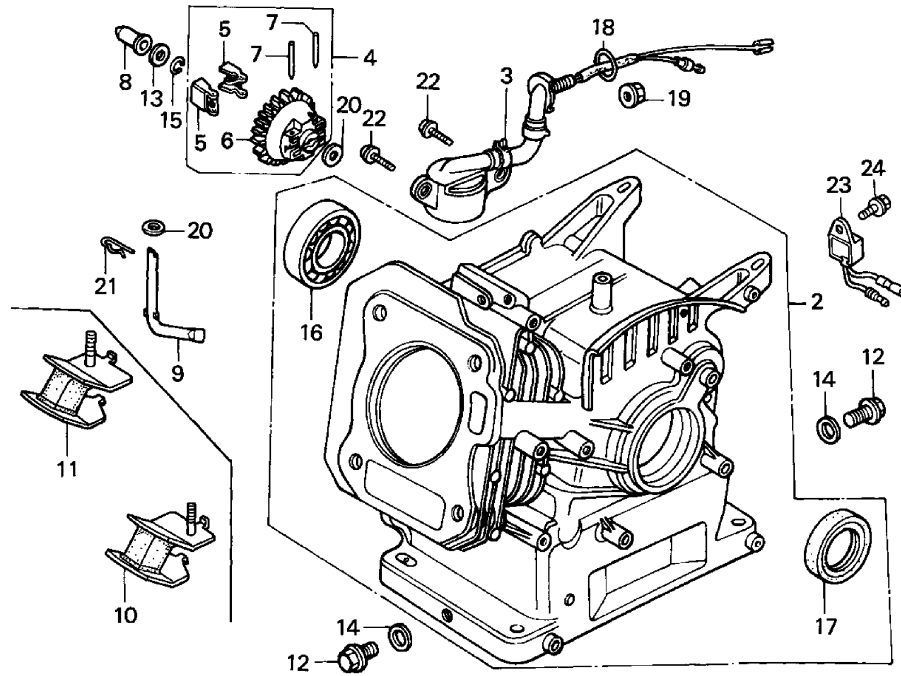
MODEL
A =GX160K1

TYPE
a =QX2

E-3

Ref	Description	Engine Serial Number		QTY	Part Number	H/C
		From	To			
2	CYLINDER ASSY. (811).....	-----	-----	1	12000-ZH8-406	6363667
	CYLINDER ASSY. (OIL ALERT)	-----	4067884	1	12000-ZH8-811	5032719
3	SWITCH ASSY., OIL LEVEL	-----	-----	1	15510-ZE1-033	5962063
4	GOVERNOR ASSY.....	-----	-----	1	16510-ZE1-000	2414225
5	WEIGHT, GOVERNOR	-----	4913229	2	16511-ZE1-000	1427228
6	HOLDER, GOVERNOR WEIGHT	-----	4913229	1	16512-ZE1-000	1427236
7	PIN, GOVERNOR WEIGHT	-----	-----	2	16513-ZE1-000	1427244
8	SLIDER, GOVERNOR	-----	-----	1	16531-ZE1-000	1427251
9	SHAFT, GOVERNOR ARM	-----	-----	1	16541-ZE1-000	1427277
12	BOLT, DRAIN PLUG	-----	-----	2	90131-ZE1-000	1431246
13	WASHER, THRUST (6MM)	-----	-----	1	90451-ZE1-000	2413862
14	WASHER, DRAIN PLUG (10.2MM)	-----	-----	2	90601-ZE1-000	1436583
15	CLIP, GOVERNOR HOLDER.....	-----	-----	1	90602-ZE1-000	2456697
16	BEARING, RADIAL BALL (6205)	-----	-----	1	91001-ZF1-003	3684248
17	OIL SEAL (25X41X6)	-----	-----	1	91201-Z0T-801	7352453
	OIL SEAL (25X41X6)	-----	-----	1	91202-883-005	0636936
18	O-RING (13.5X1.5) (ARAI)	-----	-----	1	91353-671-003	0949883
19	NUT, FLANGE (10MM).....	-----	-----	1	94050-10000	0483867

CYLINDER BARREL



ZH80-E0300

ZH80E0300

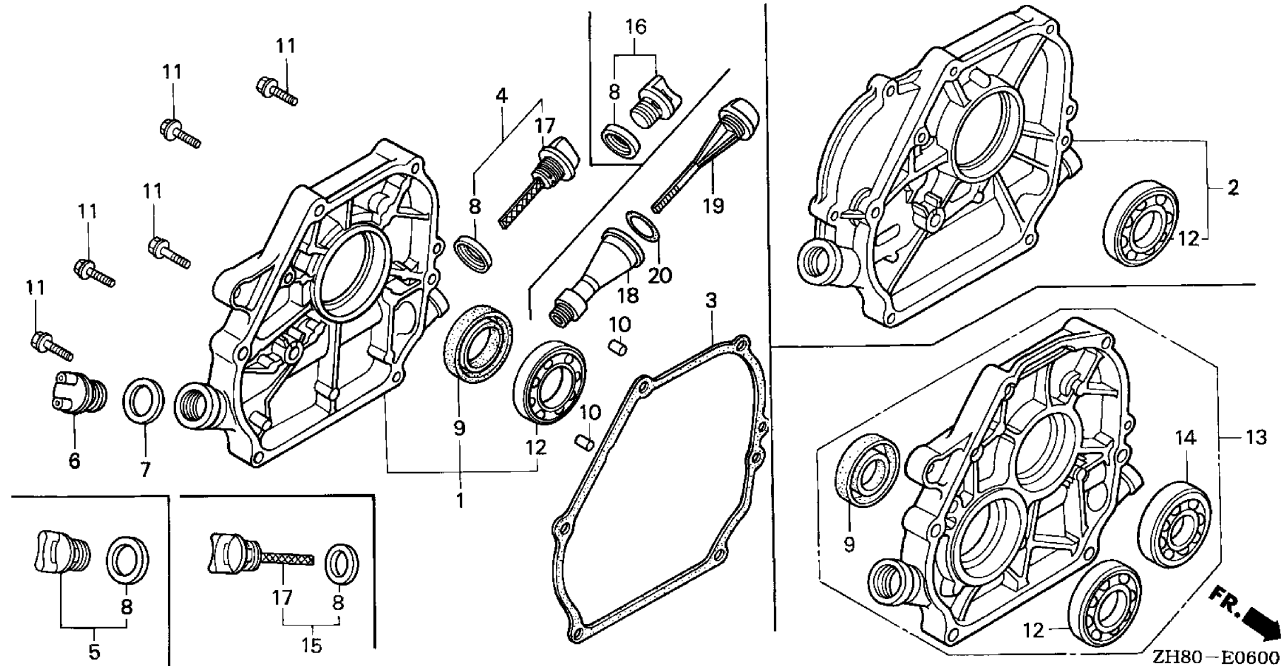
MODEL
A =GX160K1

TYPE
a =QX2

E-3

Ref	Description	Engine Serial Number		QTY	Part Number	H/C
		From	To			
20	WASHER, PLAIN (6MM)	-----	-----	2	94101-06800	0345900
21	PIN, LOCK (8MM).....	-----	-----	1	94251-08000	0115527
22	BOLT, FLANGE (6X12)	-----	-----	2	95701-06012-00	2105799

CRANKCASE COVER (1)



ZH80E0600

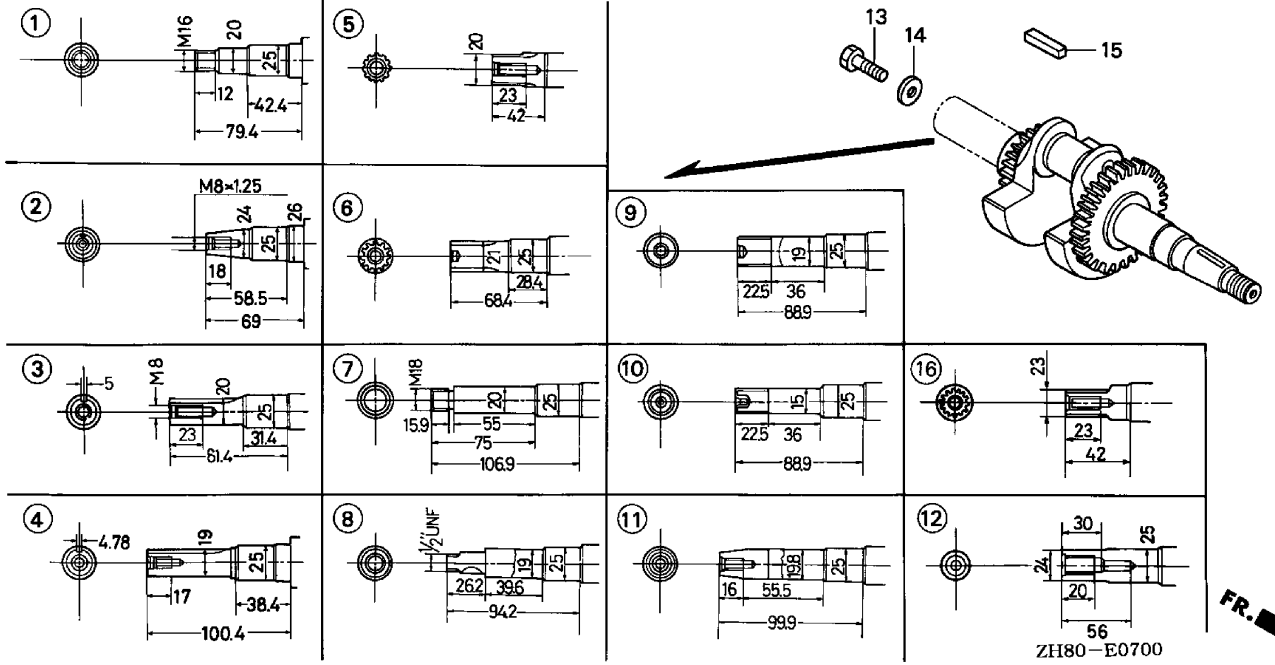
MODEL
A =GX160K1

TYPE
a =QX2

E-6

Ref	Description	Engine Serial Number		QTY	Part Number	H/C
		From	To			
1	COVER ASSY., CRANKCASE (U-TYPE) ..	-----	-----	1	11300-ZE1-641	4731568
	COVER ASSY., CRANKCASE	-----	-----	1	11300-ZE1-642	7393127
3	GASKET, CASE COVER	-----	3413169	1	11381-ZH8-800	3683349
	GASKET, CASE COVER (NON-ASBESTOS).....	-----	-----	1	11381-ZH8-801	4723144
4	CAP ASSY., OIL FILLER	-----	-----	1	15600-ZE1-003	4500146
5	CAP ASSY., OIL FILLER	2966710	-----	1	15600-ZG4-003	4497921
6	CAP, OIL FILLER	-----	2966709	1	15620-ZG4-910	3678596
7	GASKET, OIL FILLER CAP	-----	2966709	1	15621-896-010	1033042
8	GASKET, OIL FILLER CAP	-----	2966709	1	15625-ZE1-000	1427079
	GASKET, OIL FILLER CAP	-----	2966709	1	15625-ZE1-003	4497947
		2966710	-----	2	15625-ZE1-003	4497947
9	OIL SEAL (25X41X6)	-----	-----	1	91201-Z0T-801	7352453
	OIL SEAL (25X41X6)	-----	-----	1	91202-883-005	0636936
10	PIN A, DOWEL (8X14)	-----	-----	2	94301-08140	0069310
11	BOLT, FLANGE (8X32)	-----	-----	6	95701-08032-00	2751725
12	BEARING, RADIAL BALL (6205)	-----	-----	1	96100-62050-00	0636977

CRANKSHAFT (1)



ZH80E0700

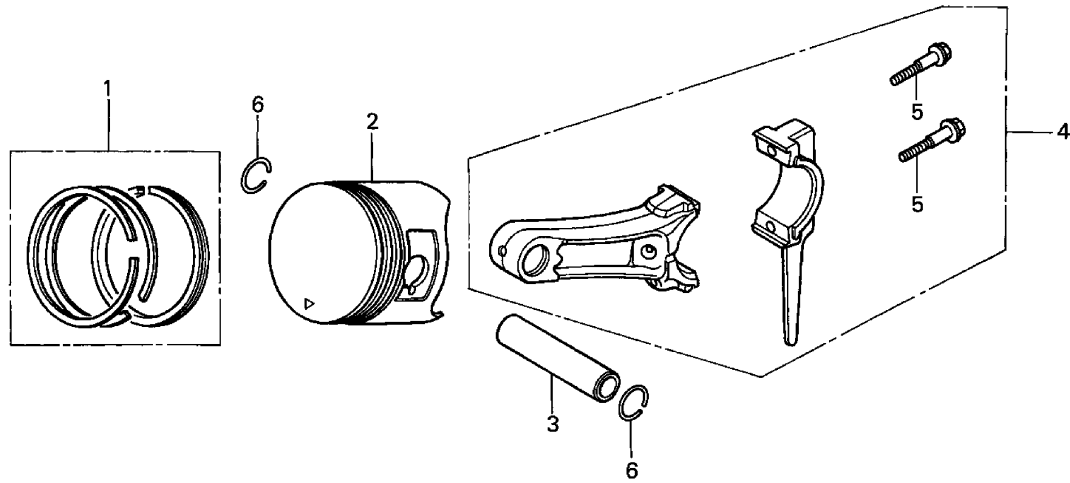
MODEL
A =GX160K1

TYPE
a =QX2

E-7

Ref	Description	Engine Serial Number		QTY	Part Number	H/C
		From	To			
4	CRANKSHAFT (Q-TYPE).....	-----	-----	1	13310-ZE1-601	2794535
15	KEY (4.78X4.78X38)	-----	-----	1	90745-ZE1-600	1441062

PISTON



ZH80-E0800



ZH80E0800

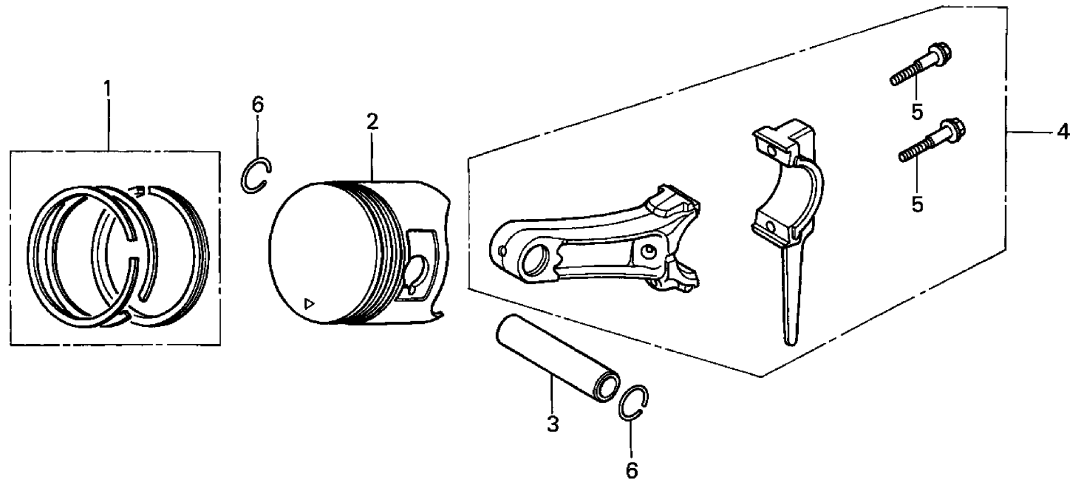
MODEL
A =GX160K1

TYPE
a =QX2

E-8

Ref	Description	Engine Serial Number		QTY	Part Number	H/C
		From	To			
1	RING SET, PISTON (STD).....	-----	5495899	1	13010-ZF1-023	3011285
	RING SET, PISTON (STD).....	5495900	-----	1	13010-ZH8-941	5396585
	RING SET, PISTON (OS 0.25).....	-----	5495899	(1)	13011-ZF1-023	3018025
	RING SET, PISTON (OS 0.25).....	5495900	-----	(1)	13011-ZH8-941	5396601
	RING SET, PISTON (OS 0.25).....	5495900	-----	(1)	13011-ZH8-942	5396619
	RING SET, PISTON (OS 0.50).....	-----	5495899	(1)	13012-ZF1-023	3018033
	RING SET, PISTON (OS 0.50).....	-----	5495899	(1)	13012-ZF1-024	3018041
	RING SET, PISTON (OS 0.50).....	5495900	-----	(1)	13012-ZH8-941	5396627
	RING SET, PISTON (OS 0.50).....	5495900	-----	(1)	13012-ZH8-942	5396635
	RING SET, PISTON (0.75).....	-----	5495899	(1)	13013-ZF1-023	3018058
	RING SET, PISTON (0.75).....	-----	5495899	(1)	13013-ZF1-024	3018066
	RING SET, PISTON (0.75).....	5495900	-----	(1)	13013-ZH8-941	5396643
	RING SET, PISTON (0.75).....	5495900	-----	(1)	13013-ZH8-942	5396650
2	PISTON (STD)	-----	7603338	1	13101-ZH8-000	3683398
	PISTON (STD)	-----	-----	1	13101-ZH8-010	6837512
	PISTON (OS 0.25)	-----	-----	(1)	13102-ZH8-000	3683406
	PISTON (OS 0.25)	-----	-----	(1)	13102-ZH8-010	6855035
	PISTON (OS 0.50)	-----	-----	(1)	13103-ZH8-010	6855050

PISTON



ZH80-E0800



ZH80E0800

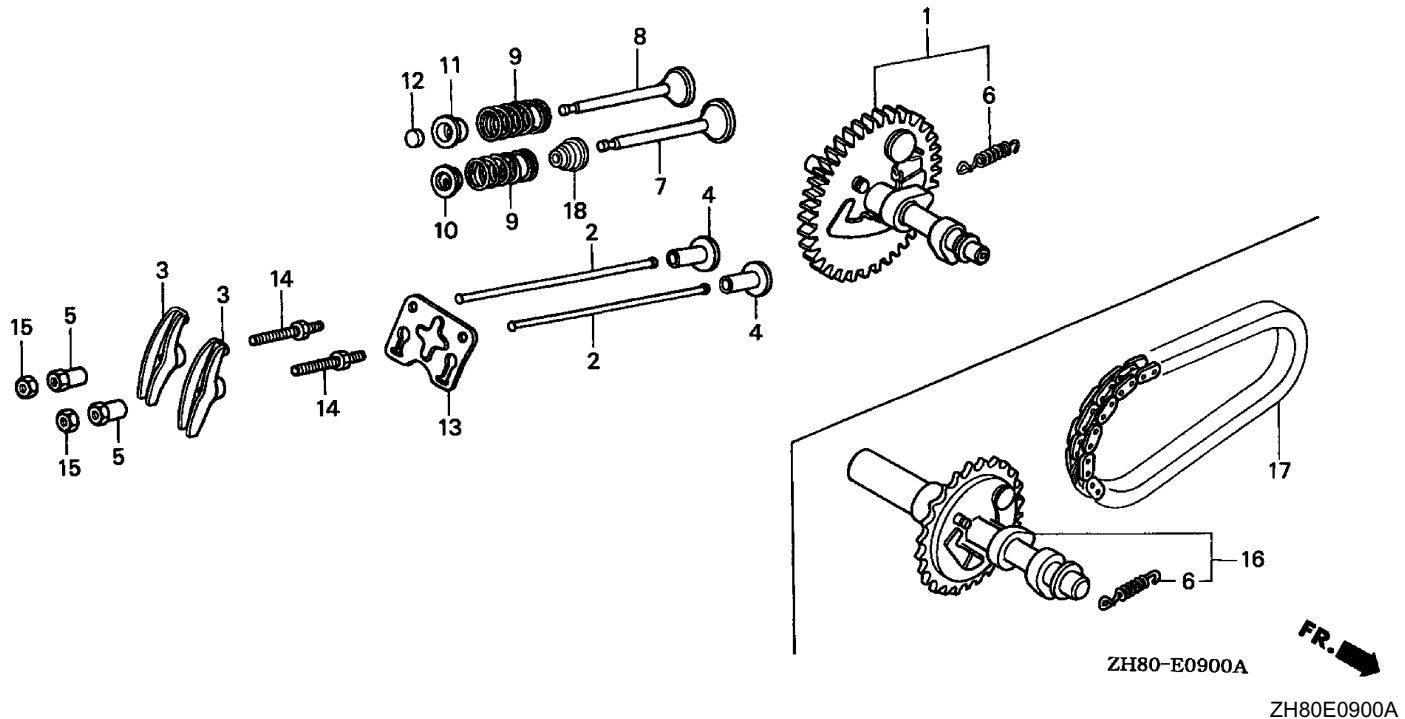
MODEL
A =GX160K1

TYPE
a =QX2

E-8

Ref	Description	Engine Serial Number		QTY	Part Number	H/C
		From	To			
2	PISTON (0.75)	-----	-----	(1)	13104-ZH8-000	3683422
3	PIN, PISTON	-----	-----	1	13111-ZE1-000	1426584
4	ROD ASSY., CONNECTING (US 0.25)	-----	-----	(1)	132A0-ZE1-000	1441344
	ROD ASSY., CONNECTING	-----	-----	1	13200-ZE1-010	4725255
5	BOLT, CONNECTING ROD	-----	-----	2	90001-ZE1-000	1431055
6	CLIP, PISTON PIN (18MM)	-----	-----	2	90551-ZE1-000	2539120

CAMSHAFT



ZH80-E0900A

ZH80E0900A

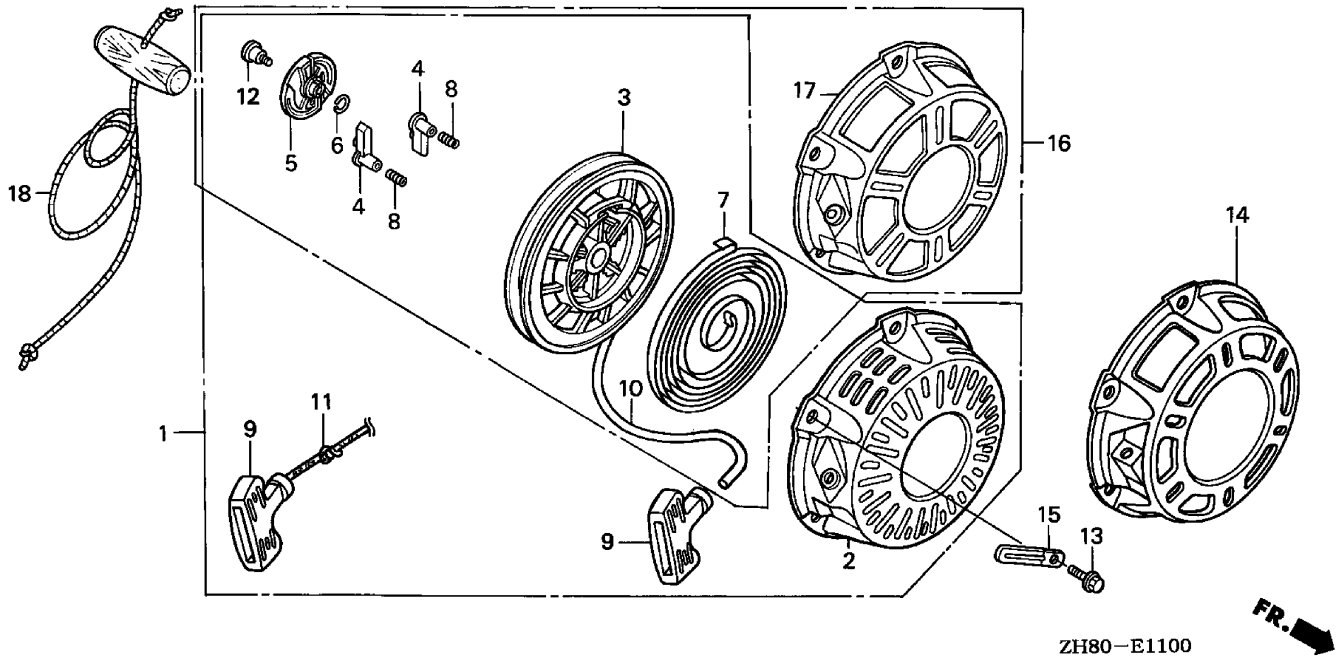
MODEL
A =GX160K1

TYPE
a =QX2

E-9

Ref	Description	Engine Serial Number		QTY	Part Number	H/C
		From	To			
1	CAMSHAFT ASSY.	-----	-----	1	14100-ZE1-812	1929611
2	ROD, PUSH	-----	-----	2	14410-ZE1-010	3352655
3	ARM, VALVE ROCKER	-----	-----	2	14431-ZE1-000	1426824
4	LIFTER, VALVE	-----	-----	2	14441-ZE1-010	5181383
5	PIVOT, ROCKER ARM.....	-----	-----	2	14451-ZE1-013	4300901
6	SPRING, WEIGHT RETURN	-----	-----	1	14568-ZE1-000	1426907
7	VALVE, IN.	-----	-----	1	14711-ZF1-000	3683455
8	VALVE, EX.	-----	-----	1	14721-ZF1-000	3683463
9	SPRING, VALVE	-----	-----	2	14751-ZF1-000	3683489
10	RETAINER, IN. VALVE SPRING	-----	-----	1	14771-ZE1-000	1426980
11	RETAINER, EX. VALVE SPRING	-----	-----	1	14773-ZE1-000	1426998
12	ROTATOR, VALVE.....	-----	-----	1	14781-ZE1-000	1427004
13	PLATE, PUSH ROD GUIDE.....	-----	-----	1	14791-ZE1-010	1899947
14	BOLT, PIVOT (8MM)	-----	-----	2	90012-ZE0-010	1756964
15	NUT, PIVOT ADJ.....	-----	-----	2	90206-ZE1-000	1431287
18	SEAL, VALVE STEM	7664037	-----	1	12209-ZH8-003	6854335

RECOIL STARTER (1)



ZH80E1100

MODEL
A =GX160K1

TYPE
a =QX2

E-11

Ref	Description	Engine Serial Number		QTY	Part Number	H/C
		From	To			
1	STARTER ASSY., RECOIL *R280* (POWER RED).....	-----	-----	1	28400-ZH8-013YA	7346810
	STARTER ASSY., RECOIL *R8* (BRIGHT RED).....	-----	-----	1	28400-ZH8-013ZA	4193033
	STARTER ASSY., RECOIL *NH1* (BLACK).....	-----	-----	1	28400-ZH8-013ZB	4193041
	STARTER ASSY., RECOIL *T41* (BARTELL BLUE).....	-----	-----	1	28400-ZH8-013ZD	4761946
2	CASE, RECOIL STARTER *R280* (POWER RED).....	-----	-----	1	28410-ZH8-003YA	7346836
	CASE, RECOIL STARTER *R8* (BRIGHT RED).....	-----	-----	1	28410-ZH8-003ZA	3683869
	CASE, RECOIL STARTER *NH1* (BLACK).....	-----	-----	1	28410-ZH8-003ZB	4193058
	CASE, RECOIL STARTER *T41* (BARTELL BLUE).....	-----	-----	1	28410-ZH8-003ZD	4761995
3	REEL, RECOIL STARTER.....	-----	-----	1	28420-ZH8-013	4193066
4	RATCHET, STARTER.....	-----	-----	2	28422-ZH8-013	4193074
5	GUIDE, RATCHET.....	-----	-----	1	28433-ZH8-003	3683893
6	SPRING, FRICTION.....	-----	-----	1	28441-ZH8-003	3683901
7	SPRING, RECOIL STARTER.....	-----	-----	1	28442-ZH8-003	3683919
8	SPRING, RETURN.....	-----	-----	2	28443-ZH8-003	3683927

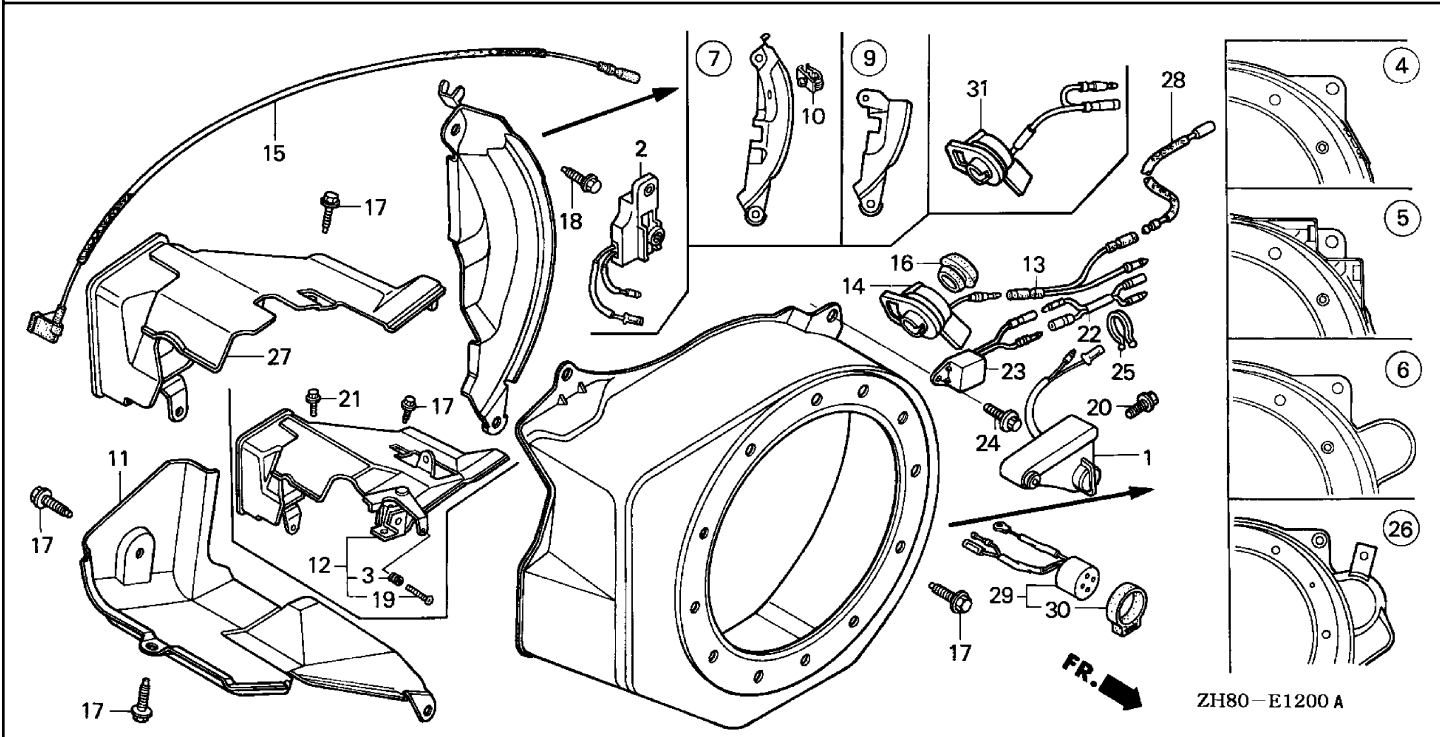
RECOIL STARTER (1)

MODEL **TYPE**
 A =GX160K1 a =QX2

E-11

Ref	Description	Engine Serial Number		QTY	Part Number	H/C
		From	To			
9	KNOB, RECOIL STARTER	-----	-----	1	28461-ZH8-003	3683950
10	ROPE, RECOIL STARTER (#5X55") (NA USE ALT:08550-ZG921-11)	-----	-----	1	28462-ZH8-003	3683968
12	SCREW, SETTING.....	-----	-----	1	90003-ZH8-003	3684222
13	BOLT, FLANGE (6X10)	-----	-----	3	90008-ZE2-003	6437289

FAN COVER



ZH80-E1200 A

ZH80E1200A

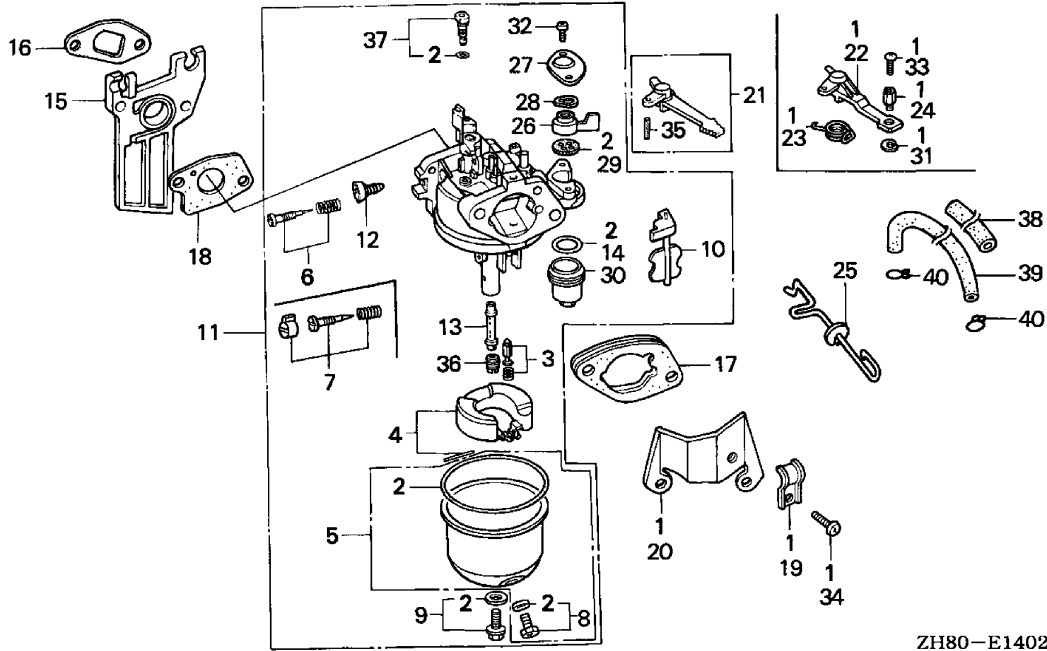
MODEL
A =GX160K1

TYPE
a =QX2

E-12

Ref	Description	Engine Serial Number		QTY	Part Number	H/C
		From	To			
4	COVER, FAN *R8* (BRIGHT RED)	-----	-----	1	19610-ZE1-000ZA	3417490
	COVER, FAN *NH1* (BLACK)	-----	-----	1	19610-ZE1-000ZC	4212437
	COVER, FAN *T41* (BARTELL BLUE)	-----	-----	1	19610-ZE1-000ZF	4761300
	COVER, FAN *R280* (POWER RED)	-----	-----	1	19610-ZE1-000ZP	7351950
7	PLATE, SIDE (OIL ALERT)	5372719	-----	1	19611-ZH8-810	5891528
	PLATE, SIDE (STD)	-----	4795905	1	19612-ZH8-810	3683778
	PLATE, SIDE	4795906	5372718	1	19612-ZH8-812	5891536
10	CLAMP, CORD	-----	4367320	1	19613-ZE1-010	5891544
	CLIP, HARNESS	4367321	-----	1	90601-ZH7-013	5263934
11	SHROUD	-----	-----	1	19630-ZH8-000	3683802
13	SUB-HARNESS	-----	-----	1	32197-ZH8-003	4193082
14	SWITCH ASSY., ENGINE STOP	-----	4368640	1	36100-ZE1-015	2787869
	SWITCH ASSY., ENGINE STOP	4368641	-----	1	36100-ZH7-003	5266184
17	BOLT, FLANGE (6X12) (CT200)	-----	-----	6	90013-883-000	0636845
18	BOLT, FLANGE (6X20) (CT200)	-----	-----	1	90022-888-010	0671552
23	ALERT UNIT, OIL	5372719	-----	1	34150-ZH7-003	5858444
24	BOLT, FLANGE (6X8)	5372719	-----	1	95701-06008-00	2581353

CARBURETOR (3)



ZH80-E1402



ZH80E1402

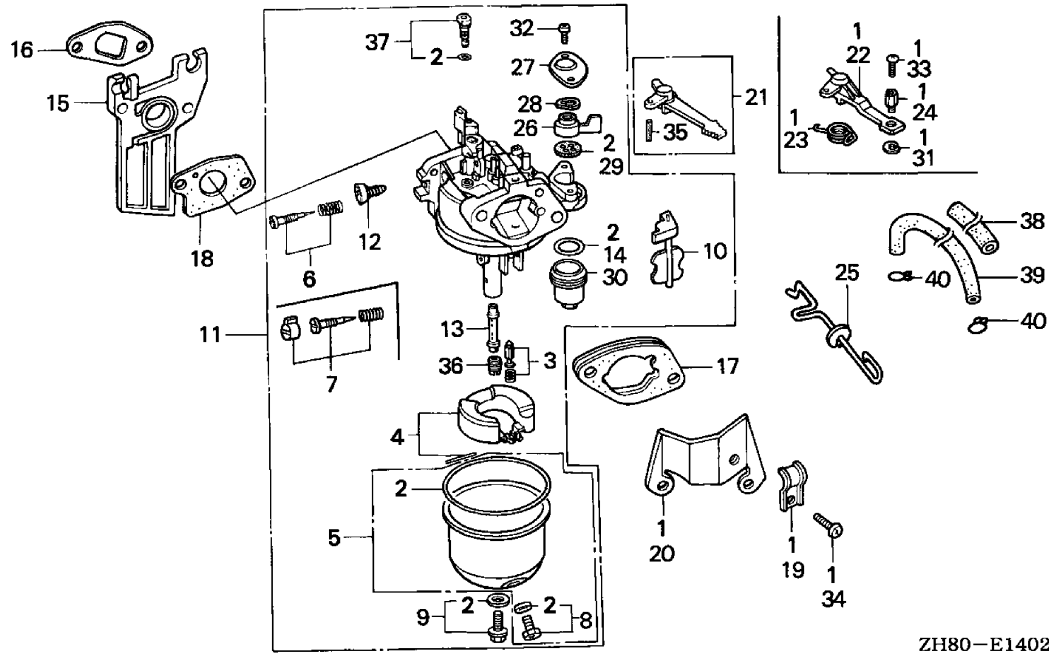
MODEL
A =GX160K1

TYPE
a =QX2

E-14-2

Ref	Description	Engine Serial Number		QTY	Part Number	H/C
		From	To			
2	GASKET SET	-----	-----	1	16010-ZE1-812	3477171
3	VALVE SET, FLOAT.....	-----	-----	1	16011-ZE0-005	1441476
4	FLOAT SET	-----	-----	1	16013-ZE0-005	1441492
5	CHAMBER SET, FLOAT	BE65B B	-----	1	16015-ZE0-831	2455608
	CHAMBER SET, FLOAT	-----	BE65B A	1	16015-ZE1-811	2464287
7	SCREW SET	-----	-----	1	16016-ZH7-W01	4219879
8	SCREW SET, DRAIN	-----	-----	1	16024-ZE1-811	1672187
9	SCREW SET B.....	-----	-----	1	16028-ZE0-005	1441518
10	CHOKE SET	-----	-----	1	16044-ZE0-005	1441526
11	CARBURETOR ASSY. (BE65B B).....	-----	-----	1	16100-ZH8-W51	5152491
12	SCREW, THROTTLE STOP.....	-----	-----	1	16124-ZE0-005	1441559
13	NOZZLE, MAIN.....	-----	-----	1	16166-ZH8-W50	4229563
14	GASKET, FUEL STRAINER CUP	-----	-----	1	16173-001-004	0005652
15	INSULATOR, CARBURETOR	-----	-----	1	16211-ZE1-000	1427137
16	GASKET, INSULATOR.....	-----	-----	1	16212-ZH8-800	3683547
17	SPACER, CARBURETOR	-----	-----	1	16220-ZE1-020	2534055
18	GASKET, CARBURETOR	-----	-----	1	16221-ZH8-801	4725289
21	LEVER, CHOKE (STD).....	-----	-----	1	16610-ZE1-000	1440114

CARBURETOR (3)



ZH80-E1402



ZH80E1402

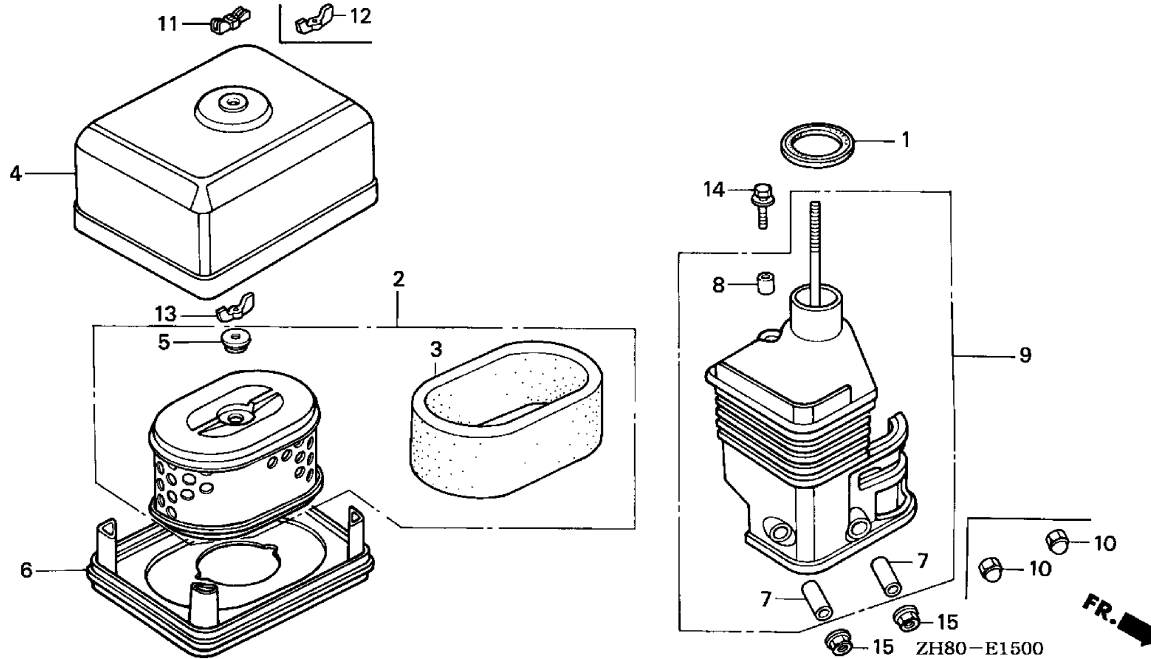
MODEL
A =GX160K1

TYPE
a =QX2

E-14-2

Ref	Description	Engine Serial Number		QTY	Part Number	H/C
		From	To			
26	LEVER, VALVE	-----	-----	1	16953-ZE1-812	5140876
27	PLATE, LEVER SETTING	-----	BE65B A	1	16954-ZE1-812	5148135
		BE65B B	-----	1	16954-ZE1-812	5148135
28	SPRING, VALVE LEVER	-----	-----	1	16956-ZE1-811	1807809
29	GASKET, VALVE	-----	-----	1	16957-ZE1-812	3440708
30	CUP, FUEL STRAINER	-----	-----	1	16967-ZE0-811	1441583
32	SCREW, PAN (3X6)	BE65B B	-----	2	93500-03006-0H	0561654
	SCREW, PAN (3X8)	-----	BE65B A	2	93500-03008-0G	0420505
35	PIN, SPRING (2X12)	-----	-----	1	94305-20122	1441591
36	JET, MAIN (#65)	-----	-----	(1)	99101-ZH8-0650	5519988
	JET, MAIN (#68)	-----	-----	(1)	99101-ZH8-0680	5519996
	JET, MAIN (#70)	-----	-----	1	99101-ZH8-0700	5427505
37	JET SET, PILOT (#35)	-----	-----	1	99204-ZE0-0350	1441609

AIR CLEANER (1)



ZH80E1500

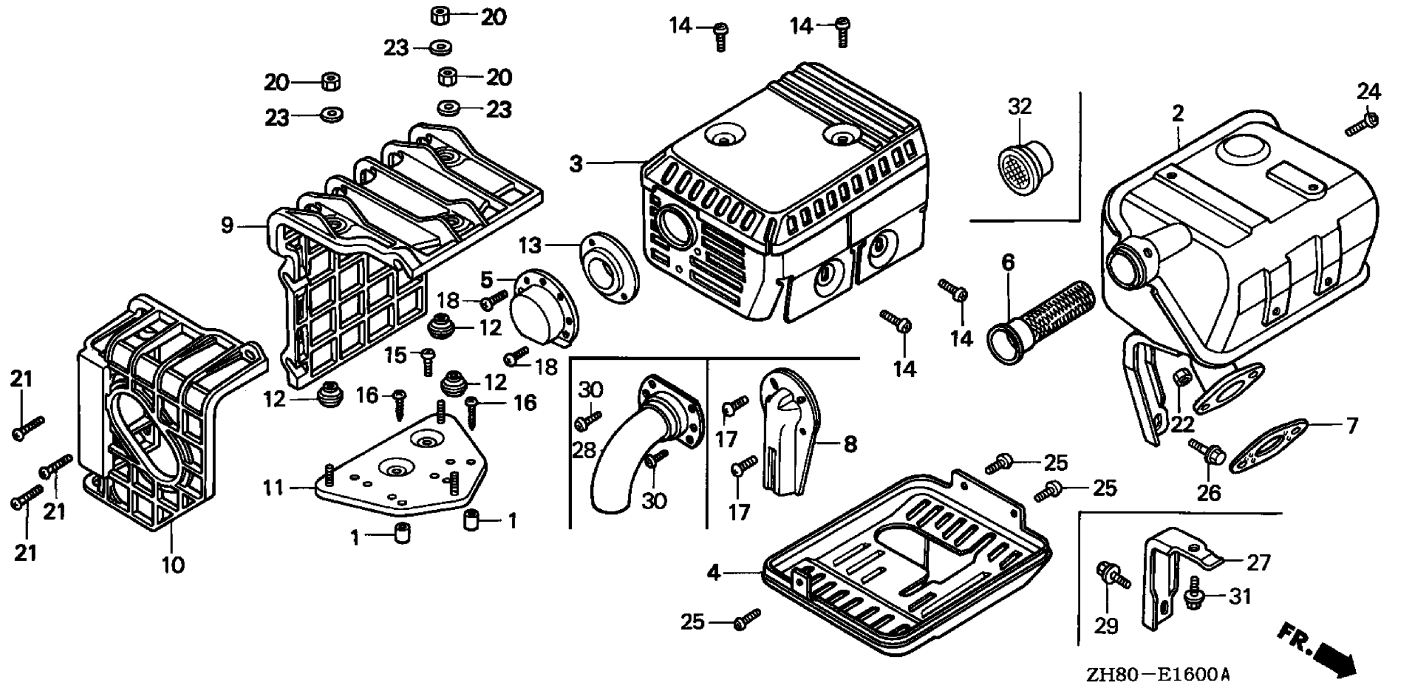
MODEL
A =GX160K1

TYPE
a =QX2

E-15

Ref	Description	Engine Serial Number		QTY	Part Number	H/C
		From	To			
1	GASKET, ELBOW	-----	-----	1	16271-ZE1-000	1427194
2	ELEMENT, AIR CLEANER (DUAL)	-----	-----	1	17210-ZE1-505	5247408
	ELEMENT, AIR CLEANER (DUAL)	-----	-----	1	17210-ZE1-517	7372444
	ELEMENT, AIR CLEANER (DUAL)	-----	-----	1	17210-ZE1-822	2893881
3	FILTER (OUTER)	-----	-----	1	17218-ZE1-505	5272802
	FILTER (OUTER)	-----	-----	1	17218-ZE1-507	7351885
4	COVER, AIR CLEANER (DUAL)	-----	-----	1	17230-ZE1-820	1445790
5	GROMMET, AIR CLEANER.....	-----	-----	1	17232-891-000	0999763
7	COLLAR, AIR CLEANER	-----	-----	2	17238-ZE7-010	2455673
8	COLLAR B, AIR CLEANER	-----	-----	1	17239-ZE1-000	1427533
9	ELBOW, AIR CLEANER.....	-----	-----	1	17410-ZE1-020	2481653
10	NUT, CAP (6MM)	-----	-----	2	90201-415-000	0670729
11	WINGNUT (6MM)	-----	2836833	1	90203-ZA0-800	1742238
12	WINGNUT, TOOL BOX SETTING	2836834	-----	1	90325-044-000	0127720
13	WINGNUT, TOOL BOX SETTING	-----	-----	1	90325-044-000	0127720
14	BOLT-WASHER (6X20)	-----	3385101	1	93404-06020-08	2410694
	BOLT, FLANGE (6X20)	3385102	-----	1	95701-06020-00	2105815

MUFFLER (1)



ZH80E1600A

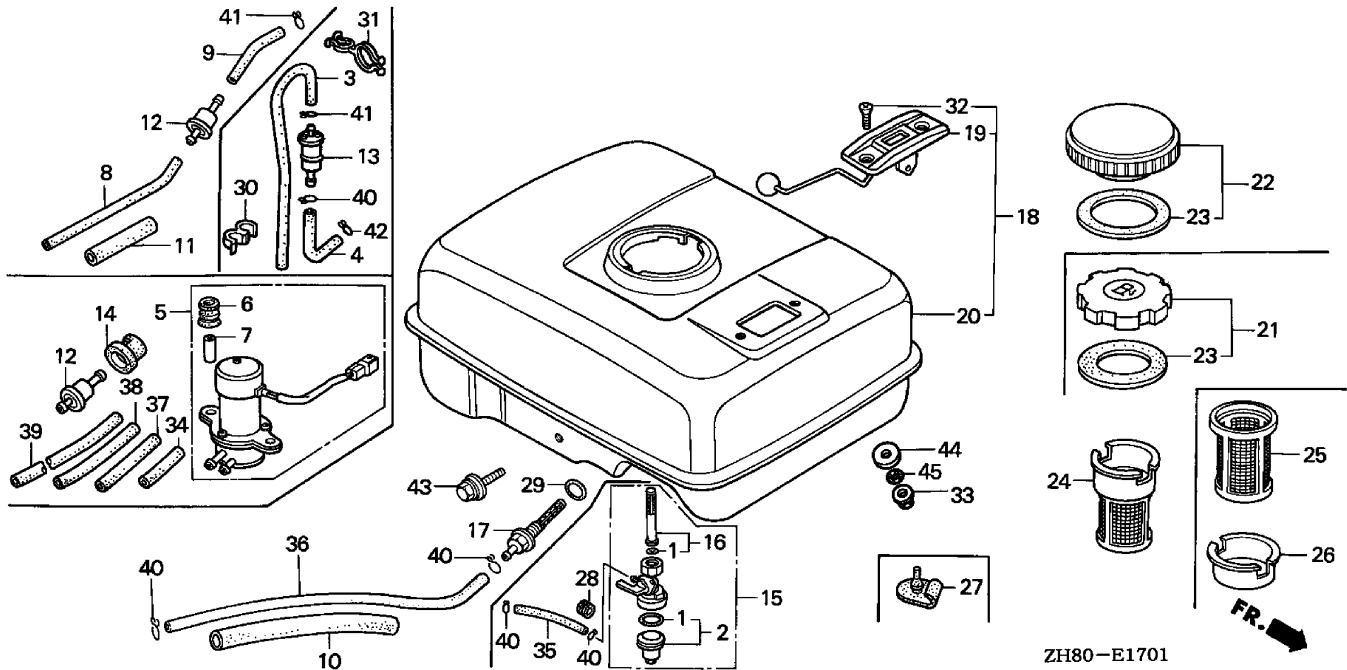
MODEL
A =GX160K1

TYPE
a =QX2

E-16

Ref	Description	Engine Serial Number		QTY	Part Number	H/C
		From	To			
2	MUFFLER.....	-----	-----	1	18310-ZF1-000	3683703
	MUFFLER.....	-----	-----	(1)	18310-ZH8-810	3683711
3	PROTECTOR, MUFFLER	-----	-----	1	18320-ZF1-H01	4644811
6	ARRESTER, SPARK	-----	-----	(1)	18355-ZE1-000	1427780
7	GASKET, MUFFLER	-----	-----	1	18381-ZH8-800	3683745
14	SCREW, TAPPING (5X8).....	-----	-----	4	90050-ZE1-000	1431105
22	NUT, HEX. (8MM).....	-----	-----	2	94001-08000-0S	0167338
24	SCREW, TAPPING (4X6).....	-----	-----	(1)	90055-ZE1-000	1431121

FUEL TANK (2)



ZH80-E1701

ZH80E1701

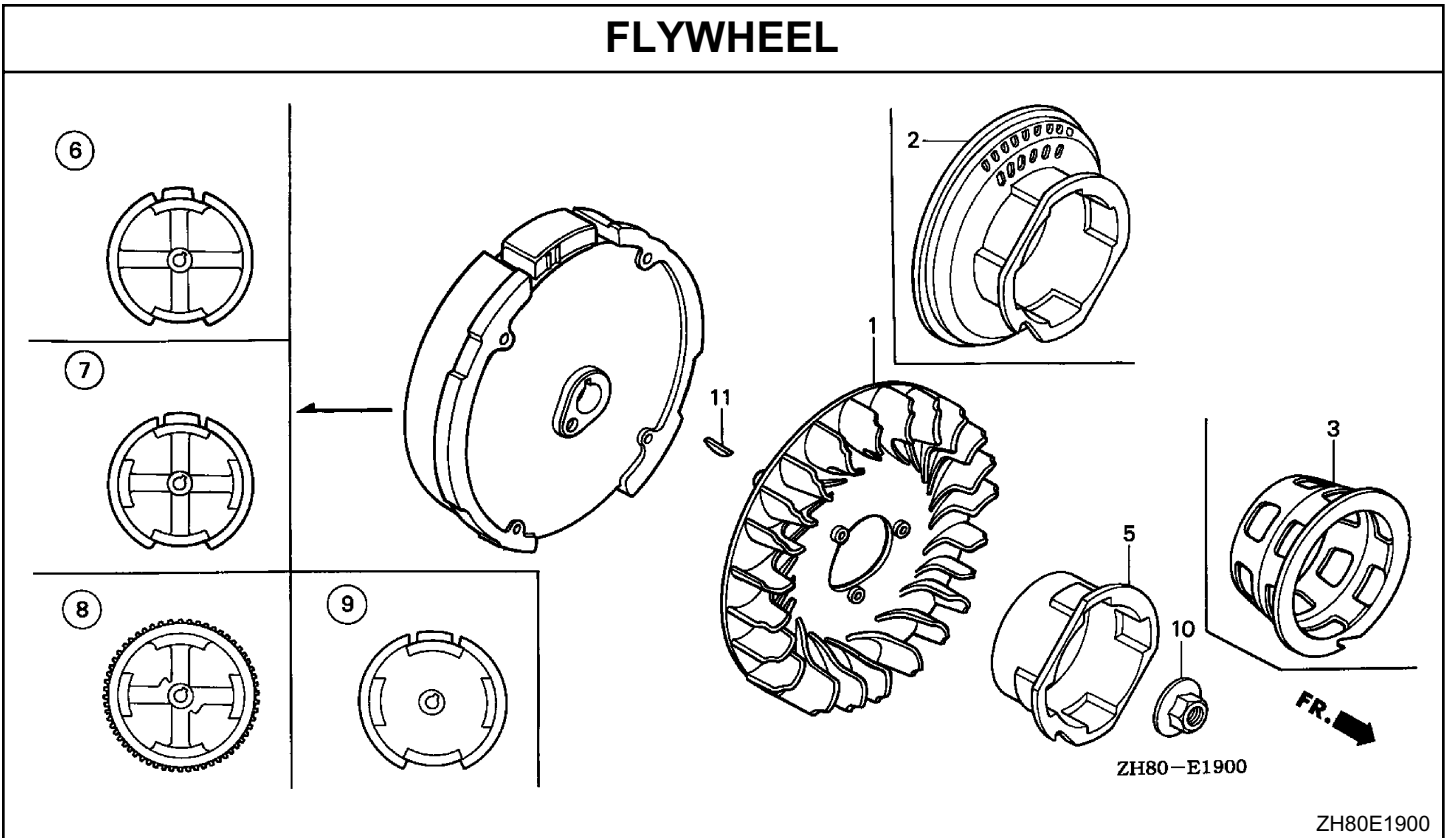
MODEL
A =GX160K1

TYPE
a =QX2

E-17-1

Ref	Description	Engine Serial Number		QTY	Part Number	H/C
		From	To			
10	RUBBER, SUPPORTER (107MM)	-----	-----	1	16854-ZH8-000	3683646
17	JOINT, FUEL TANK	-----	-----	1	16955-ZE1-000	1427459
20	TANK, FUEL *R8* (BRIGHT RED)	-----	-----	1	17510-ZE1-020ZB	3793759
	TANK, FUEL *NH1* (BLACK)	-----	-----	1	17510-ZE1-020ZF	4212429
	TANK, FUEL *R280* (POWER RED)	-----	-----	1	17510-ZE1-020ZN	7367626
21	CAP, FUEL FILLER	3063878	4705772	1	17620-ZH7-013	4572392
	CAP, FUEL FILLER	3063878	-----	1	17620-ZH7-023	5344817
22	CAP, FUEL FILLER	-----	3063877	1	17620-ZE2-W00	3682028
	CAP, FUEL FILLER	-----	3063877	1	17620-402-010	2892610
23	GASKET, FUEL FILLER CAP	3063878	-----	1	17631-ZH7-003	4608725
	GASKET, FUEL FILLER CAP	-----	3063877	1	17631-329-003	2820587
29	O-RING (13.5X1.5) (ARAI)	-----	-----	1	91353-671-003	0949883
33	NUT, FLANGE (6MM)	-----	-----	2	94050-06000	0471623
36	BULK HOSE, FUEL (4.5X3000) (4.5X140)	-----	-----	1	95001-45003-60M	5137104
40	CLIP, TUBE (B8)	-----	-----	2	95002-02080	0250647
43	BOLT, FLANGE (6X25)	-----	-----	1	95701-06025-00	2105831

FLYWHEEL



ZH80E1900

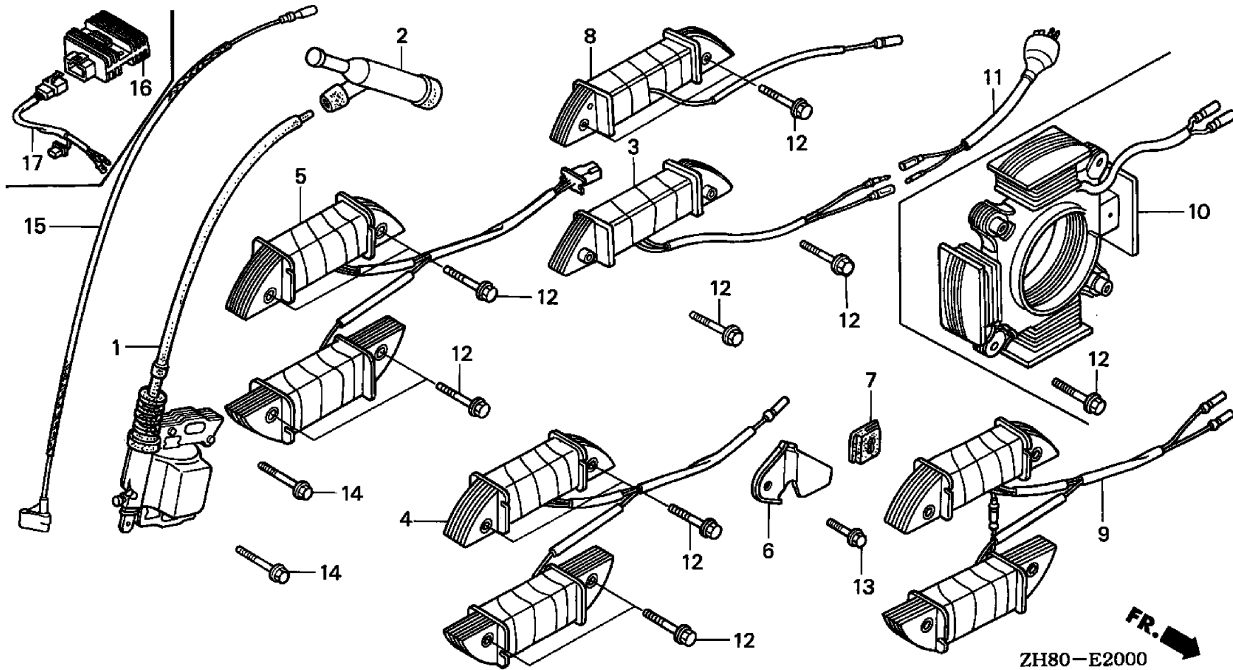
MODEL
A =GX160K1

TYPE
a =QX2

E-19

Ref	Description	Engine Serial Number		QTY	Part Number	H/C
		From	To			
1	FAN, COOLING	-----	-----	1	19511-ZE1-000	1428051
5	PULLEY, STARTER.....	-----	-----	1	28451-ZH8-003	3683943
6	FLYWHEEL	-----	-----	1	31100-ZE1-010	1496850
10	NUT, SPECIAL (14MM)	-----	-----	1	90201-878-003	0442038
11	KEY, SPECIAL WOODRUFF (25X18)	-----	-----	1	13331-357-000	0348433

IGNITION COIL



ZH80E2000

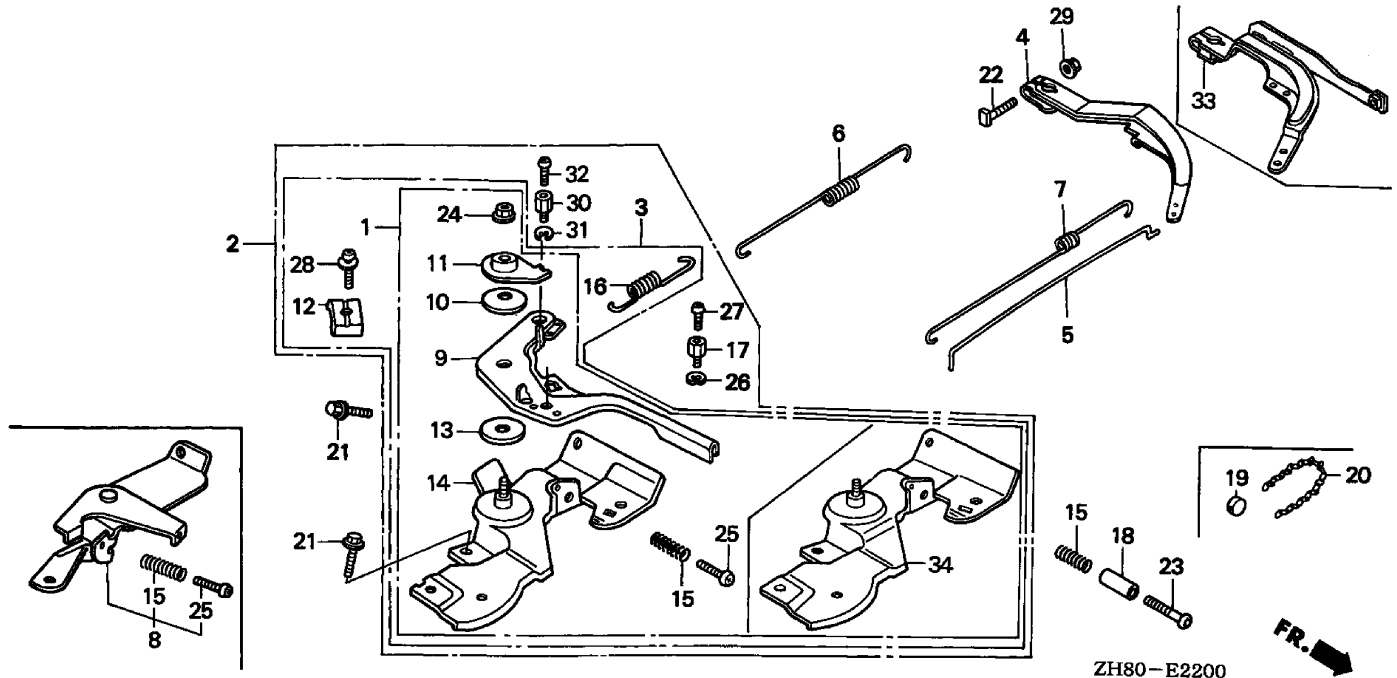
MODEL
A =GX160K1

TYPE
a =QX2

E-20

Ref	Description	Engine Serial Number		QTY	Part Number	H/C
		From	To			
1	COIL ASSY., IGNITION	-----	-----	1	30500-ZE1-033	4589693
	COIL ASSY., IGNITION	-----	-----	1	30500-ZE1-043	7120405
2	CAP ASSY., NOISE SUPPRESSOR	-----	-----	1	30700-ZE1-013	3526837
14	BOLT, FLANGE (6X25)	-----	-----	2	90121-952-000	0748111
15	WIRE, STOP SWITCH (370MM)	-----	-----	1	36101-ZE1-010	3684032

CONTROL (1)



ZH80E2200

MODEL
A =GX160K1

TYPE
a =QX2

E-22

Ref	Description	Engine Serial Number		QTY	Part Number	H/C
		From	To			
3	CONTROL ASSY. (REMOTE)	-----	5551817	1	16500-ZH8-821	4730560
	CONTROL ASSY. (REMOTE)	-----		1	16500-ZH8-823	6147755
4	ARM, GOVERNOR.....	-----		1	16551-ZE0-010	1950609
5	ROD, GOVERNOR.....	-----		1	16555-ZE1-000	1427319
6	SPRING, GOVERNOR.....	-----		1	16561-ZE1-020	1950617
7	SPRING, THROTTLE RETURN.....	-----		1	16562-ZE1-020	1950625
9	LEVER, CONTROL	-----	5551817	1	16571-ZH8-000	3683596
	LEVER, CONTROL	-----		1	16571-ZH8-020	6145338
10	SPRING, LEVER	-----		1	16574-ZE1-000	1427384
11	WASHER, CONTROL LEVER	-----		1	16575-ZH8-000	3683604
12	HOLDER, CABLE.....	-----		1	16576-891-000	0800466
13	SPACER, CONTROL LEVER.....	-----		1	16578-ZE1-000	1427400
14	BASE, CONTROL (REMOTE)	-----	5551817	1	16580-ZH8-813	6145346
15	SPRING, CONTROL ADJUSTING.....	-----		1	16584-883-300	0636431
16	SPRING, CABLE RETURN	-----		1	16592-ZE1-810	1445774
21	BOLT, FLANGE (6X12) (CT200)	-----		2	90013-883-000	0636845
22	BOLT, GOVERNOR ARM	-----		1	90015-ZE5-010	2418671
24	NUT, SELF-LOCK (6MM).....	-----		1	90114-SA0-000	1410182

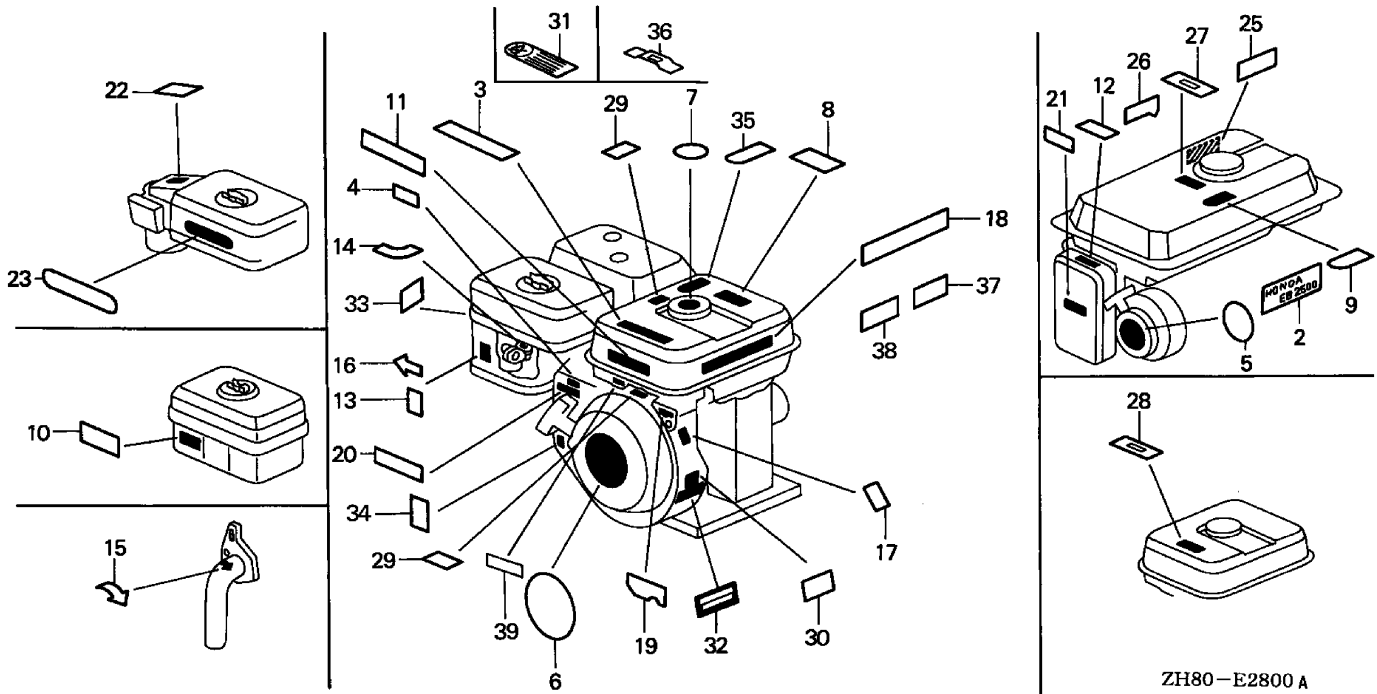
CONTROL (1)

MODEL **TYPE**
 A =GX160K1 a =QX2

E-22

Ref	Description	Engine Serial Number		QTY	Part Number	H/C
		From	To			
25	SCREW, PAN (5X25)	-----	-----	1	93500-05025-0H	0374702
28	SCREW-WASHER (5X16)	-----	-----	1	93893-05016-00	0821512
29	NUT, FLANGE (6MM).....	-----	-----	1	94050-06000	0471623
34	BASE, CONTROL (REMOTE)	5551818	-----	1	16580-ZH8-813	6145346

LABEL (1)



ZH80-E2800 A

ZH80E2800A

MODEL
A =GX160K1

TYPE
a =QX2

E-28

Ref	Description	Engine Serial Number		QTY	Part Number	H/C
		From	To			
6	EMBLEM (INTERNAL)	-----	7438467	1	87521-ZH8-010	4212478
	EMBLEM (5.5)	7438468	8367036	1	87521-ZH8-020	6752141
	EMBLEM (5.5)	8367037	-----	1	87521-ZH8-030	7352362
7	MARK, CAUTION (EXTERNAL).....	-----	3063877	1	87522-ZE1-810	1431014
11	LABEL, CAUTION	-----	-----	1	87522-ZH9-010	7005820
13	MARK, CHOKE.....	-----	-----	1	87528-ZE1-810	1696715
17	LABEL, SPECIFICATION (EXTERNAL).....	-----	-----	1	87530-ZH8-810	3684214
18	MARK, OIL ALERT (GERMAN)	2739161	-----	1	87532-ZB4-G60	4425443
	MARK, OIL ALERT (FRENCH).....	2739161	-----	1	87532-ZB4-H50	4425450
	MARK, OIL ALERT (E)	-----	-----	1	87532-ZH8-810	4193355
29	LABEL, FUEL CAUTION	-----	-----	1	87586-ZH7-W00	4212031

For Discount Troy Bilt Parts Call 606-678-9623 or 606-561-4983

www.mymowerparts.com

Part Number Index

PART NUMBER INDEX

Part Number	Grid	Page	Part Number	Grid	Page	Part Number	Grid	Page
(0)			14773-ZE1-000	1-C4	1-9	16956-ZE1-811	1-C7	1-14
06111-ZH8-405	1-D3	1-23	14781-ZE1-000	1-C4	1-9	16957-ZE1-812	1-C7	1-14
(1)			14791-ZE1-010	1-C4	1-9	16967-ZE0-811	1-C7	1-14
11300-ZE1-641	1-C2	1-5	15510-ZE1-033	1-C1	1-3	17210-ZE1-505	1-C7	1-15
11300-ZE1-642	1-C2	1-5	15600-ZE1-003	1-C2	1-5	17210-ZE1-517	1-C7	1-15
11381-ZH8-800	1-C2	1-5	15600-ZG4-003	1-C2	1-5	17210-ZE1-822	1-C7	1-15
11381-ZH8-801	1-C2	1-5	15620-ZG4-910	1-C2	1-5	17218-ZE1-505	1-C7	1-15
12000-ZH8-406	1-C1	1-3	15621-896-010	1-C2	1-5	17218-ZE1-507	1-C7	1-15
12000-ZH8-811	1-C1	1-3	15625-ZE1-000	1-C2	1-5	17230-ZE1-820	1-C7	1-15
12204-ZE1-306	1-C1	1-2	15625-ZE1-003	1-C2	1-5	17232-891-000	1-C7	1-15
12205-ZE1-315	1-C1	1-2	15721-ZH8-000	1-C1	1-2	17238-ZE7-010	1-C7	1-15
12209-ZH8-003	1-C4	1-9	16010-ZE1-812	1-C6	1-13	17239-ZE1-000	1-C7	1-15
12210-ZH8-020	1-C1	1-2	16011-ZE0-005	1-C6	1-13	17410-ZE1-020	1-C7	1-15
12216-ZE5-300	1-C1	1-2	16013-ZE0-005	1-C6	1-13	17510-ZE1-020ZB	1-C8	1-17
12251-ZF1-800	1-C1	1-2	16015-ZE0-831	1-C6	1-13	17510-ZE1-020ZF	1-C8	1-17
12310-ZE1-010	1-C1	1-2	16015-ZE1-811	1-C6	1-13	17510-ZE1-020ZN	1-C8	1-17
12310-ZE1-020	1-C1	1-2	16016-ZH7-W01	1-C6	1-13	17620-402-010	1-C8	1-17
12391-ZE1-000	1-C1	1-2	16024-ZE1-811	1-C6	1-13	17620-ZE2-W00	1-C8	1-17
13010-ZF1-023	1-C3	1-7	16028-ZE0-005	1-C6	1-13	17620-ZH7-013	1-C8	1-17
13010-ZH8-941	1-C3	1-7	16044-ZE0-005	1-C6	1-13	17620-ZH7-023	1-C8	1-17
13011-ZF1-023	1-C3	1-7	16100-ZH8-W51	1-C6	1-13	17631-329-003	1-C8	1-17
13011-ZH8-941	1-C3	1-7	16124-ZE0-005	1-C6	1-13	17631-ZH7-003	1-C8	1-17
13011-ZH8-942	1-C3	1-7	16166-ZH8-W50	1-C6	1-13	18310-ZF1-000	1-C8	1-16
13012-ZF1-023	1-C3	1-7	16173-001-004	1-C6	1-13	18310-ZH8-810	1-C8	1-16
13012-ZF1-024	1-C3	1-7	16211-ZE1-000	1-C6	1-13	18320-ZF1-H01	1-C8	1-16
13012-ZH8-941	1-C3	1-7	16212-ZH8-800	1-C6	1-13	18355-ZE1-000	1-C8	1-16
13012-ZH8-942	1-C3	1-7	16220-ZE1-020	1-C6	1-13	18381-ZH8-800	1-C8	1-16
13013-ZF1-023	1-C3	1-7	16221-ZH8-801	1-C6	1-13	19511-ZE1-000	1-D1	1-18
13013-ZF1-024	1-C3	1-7	16221-ZH8-801	1-C6	1-13	19610-ZE1-000ZA	1-C6	1-12
13013-ZH8-941	1-C3	1-7	16271-ZE1-000	1-C7	1-15	19610-ZE1-000ZC	1-C6	1-12
13013-ZH8-942	1-C3	1-7	16500-ZH8-821	1-D2	1-20	19610-ZE1-000ZD	1-C6	1-12
13101-ZH8-000	1-C3	1-7	16500-ZH8-823	1-D2	1-20	19610-ZE1-000ZF	1-C6	1-12
13101-ZH8-010	1-C3	1-7	16510-ZE1-000	1-C1	1-3	19610-ZE1-000ZP	1-C6	1-12
13102-ZH8-000	1-C3	1-7	16511-ZE1-000	1-C1	1-3	19611-ZH8-810	1-C6	1-12
13102-ZH8-010	1-C3	1-7	16512-ZE1-000	1-C1	1-3	19612-ZH8-810	1-C6	1-12
13103-ZH8-010	1-C3	1-7	16513-ZE1-000	1-C1	1-3	19612-ZH8-812	1-C6	1-12
13104-ZH8-000	1-C4	1-8	16531-ZE1-000	1-C1	1-3	19613-ZE1-010	1-C6	1-12
13111-ZE1-000	1-C4	1-8	16541-ZE1-000	1-C1	1-3	19630-ZH8-000	1-C6	1-12
13200-ZE1-010	1-C4	1-8	16551-ZE0-010	1-D2	1-20			
132A0-ZE1-000	1-C4	1-8	16555-ZE1-000	1-D2	1-20	(2)		
13310-ZE1-601	1-C3	1-6	16561-ZE1-020	1-D2	1-20	28400-ZH8-013YA	1-C5	1-10
13331-357-000	1-D1	1-18	16562-ZE1-020	1-D2	1-20	28400-ZH8-013ZA	1-C5	1-10
14100-ZE1-812	1-C4	1-9	16571-ZH8-000	1-D2	1-20	28400-ZH8-013ZB	1-C5	1-10
14410-ZE1-010	1-C4	1-9	16571-ZH8-020	1-D2	1-20	28400-ZH8-013ZD	1-C5	1-10
14431-ZE1-000	1-C4	1-9	16574-ZE1-000	1-D2	1-20	28410-ZH8-003YA	1-C5	1-10
14441-ZE1-010	1-C4	1-9	16575-ZH8-000	1-D2	1-20	28410-ZH8-003ZA	1-C5	1-10
14451-ZE1-013	1-C4	1-9	16576-891-000	1-D2	1-20	28410-ZH8-003ZB	1-C5	1-10
14568-ZE1-000	1-C4	1-9	16578-ZE1-000	1-D2	1-20	28410-ZH8-003ZD	1-C5	1-10
14711-ZF1-000	1-C4	1-9	16580-ZH8-813	1-D2	1-20	28420-ZH8-013	1-C5	1-10
14721-ZF1-000	1-C4	1-9		1-D2	1-21	28422-ZH8-013	1-C5	1-10
14751-ZF1-000	1-C4	1-9	16584-883-300	1-D2	1-20	28433-ZH8-003	1-C5	1-10
14771-ZE1-000	1-C4	1-9	16592-ZE1-810	1-D2	1-20	28441-ZH8-003	1-C5	1-10
			16610-ZE1-000	1-C6	1-13	28442-ZH8-003	1-C5	1-10
			16854-ZH8-000	1-C8	1-17	28443-ZH8-003	1-C5	1-10
			16953-ZE1-812	1-C7	1-14	28451-ZH8-003	1-D1	1-18
			16954-ZE1-812	1-C7	1-14	28461-ZH8-003	1-C5	1-11
			16955-ZE1-000	1-C8	1-17			

PART NUMBER INDEX

Part Number	Grid	Page	Part Number	Grid	Page	Part Number	Grid	Page
28462-ZH8-003	1-C5	1-11	90745-ZE1-600	1-C3	1-6			
(3)			91001-ZF1-003	1-C1	1-3			
30500-ZE1-033	1-D1	1-19	91201-ZOT-801	1-C1	1-3			
30500-ZE1-043	1-D1	1-19		1-C2	1-5			
30700-ZE1-013	1-D1	1-19	91202-883-005	1-C1	1-3			
31100-ZE1-010	1-D1	1-18		1-C2	1-5			
32197-ZH8-003	1-C6	1-12	91353-671-003	1-C1	1-3			
34150-ZH7-003	1-C6	1-12		1-C8	1-17			
36100-ZE1-015	1-C6	1-12	93404-06020-08	1-C7	1-15			
36100-ZH7-003	1-C6	1-12	93500-03006-0H	1-C7	1-14			
36101-ZE1-010	1-D1	1-19	93500-03008-0G	1-C7	1-14			
(8)			93500-05025-0H	1-D2	1-21			
87521-ZH8-010	1-D3	1-22	93893-05016-00	1-D2	1-21			
87521-ZH8-020	1-D3	1-22	94001-08000-0S	1-C8	1-16			
87521-ZH8-030	1-D3	1-22	94050-06000	1-C8	1-17			
87522-ZE1-810	1-D3	1-22		1-D2	1-21			
87522-ZH9-010	1-D3	1-22	94050-10000	1-C1	1-3			
87528-ZE1-810	1-D3	1-22	94101-06800	1-C2	1-4			
87530-ZH8-810	1-D3	1-22	94251-08000	1-C2	1-4			
87532-ZB4-G60	1-D3	1-22	94301-08140	1-C2	1-5			
87532-ZB4-H50	1-D3	1-22	94301-10160	1-C1	1-2			
87532-ZH8-810	1-D3	1-22	94305-20122	1-C7	1-14			
87586-ZH7-W00	1-D3	1-22	95001-45003-60M	1-C8	1-17			
(9)			95002-02080	1-C8	1-17			
90001-ZE1-000	1-C4	1-8	95701-06008-00	1-C6	1-12			
90003-ZH8-003	1-C5	1-11	95701-06012-00	1-C2	1-4			
90008-ZE2-003	1-C5	1-11	95701-06020-00	1-C7	1-15			
90012-ZE0-010	1-C4	1-9	95701-06025-00	1-C8	1-17			
90013-883-000	1-C6	1-12	95701-08032-00	1-C2	1-5			
			95723-08060-00	1-C1	1-2			
			96100-62050-00	1-C2	1-5			
90015-ZE5-010	1-D2	1-20	98079-55846	1-C1	1-2			
90016-ZE1-000	1-C1	1-2	98079-55855	1-C1	1-2			
90022-888-010	1-C6	1-12	98079-56846	1-C1	1-2			
90043-ZE1-020	1-C1	1-2	98079-56855	1-C1	1-2			
90047-ZE1-000	1-C1	1-2	99101-ZH8-0650	1-C7	1-14			
90050-ZE1-000	1-C8	1-16	99101-ZH8-0680	1-C7	1-14			
90055-ZE1-000	1-C8	1-16	99101-ZH8-0700	1-C7	1-14			
90114-SA0-000	1-D2	1-20	99204-ZE0-0350	1-C7	1-14			
90121-952-000	1-D1	1-19						
90131-ZE1-000	1-C1	1-3						
90201-415-000	1-C7	1-15						
90201-878-003	1-D1	1-18						
90203-ZA0-800	1-C7	1-15						
90206-ZE1-000	1-C4	1-9						
90325-044-000	1-C7	1-15						
90451-ZE1-000	1-C1	1-3						
90551-ZE1-000	1-C4	1-8						
90601-ZE1-000	1-C1	1-3						
90601-ZH7-013	1-C6	1-12						
90602-ZE1-000	1-C1	1-3						

For Discount Troy Bilt Parts Call 606-678-9623 or 606-561-4983

www.mymowerparts.com

Description

Index

DESCRIPTION INDEX

Description	Grid	Page	Ref	Description	Grid	Page	Ref
(A)				CLIP, TUBE (B8)	1-C8	1-17	40
ALERT UNIT, OIL	1-C6	1-12	23	CLIP, VALVE GUIDE	1-C1	1-2	4
ARM, GOVERNOR	1-D2	1-20	4	COIL ASSY., IGNITION	1-D1	1-19	1
ARM, VALVE ROCKER	1-C4	1-9	3	COLLAR, AIR CLEANER	1-C7	1-15	7
ARRESTER, SPARK	1-C8	1-16	6	COLLAR B, AIR CLEANER	1-C7	1-15	8
(B)				CONTROL ASSY. (REMOTE)	1-D2	1-20	3
BASE, CONTROL (REMOTE)	1-D2	1-20	14	COVER, AIR CLEANER (DUAL)	1-C7	1-15	4
BEARING, RADIAL BALL (6205)	1-D2	1-21	34	COVER ASSY., CRANKCASE	1-C2	1-5	1
BOLT, CONNECTING ROD	1-C1	1-3	16	COVER ASSY., CRANKCASE (U-TYPE)	1-C2	1-5	1
BOLT, DRAIN PLUG	1-C2	1-5	12	COVER, FAN *NH1* (BLACK)	1-C6	1-12	4
BOLT, FLANGE (6X10)	1-C4	1-8	5	COVER, FAN *R280* (POWER RED)	1-C6	1-12	4
BOLT, FLANGE (6X12)	1-C1	1-3	12	COVER, FAN *R8* (BRIGHT RED)	1-C6	1-12	4
BOLT, FLANGE (6X12) (CT200)	1-C2	1-4	22	COVER, FAN *T41* (BARTELL BLUE)	1-C6	1-12	4
BOLT, FLANGE (6X12) (CT200)	1-C6	1-12	17	COVER, HEAD	1-C1	1-2	6
BOLT, FLANGE (6X13)	1-D2	1-20	21	CRANKSHAFT (Q-TYPE)	1-C3	1-6	4
BOLT, FLANGE (6X20)	1-C1	1-2	9	CUP, FUEL STRAINER	1-C7	1-14	30
BOLT, FLANGE (6X20) (CT200)	1-C7	1-15	14	CYLINDER ASSY. (811)	1-C1	1-3	2
BOLT, FLANGE (6X25)	1-C6	1-12	18	CYLINDER ASSY. (OIL ALERT)	1-C1	1-3	2
BOLT, FLANGE (6X8)	1-D1	1-19	14	CYLINDER HEAD	1-C1	1-2	1
BOLT, FLANGE (8X32)	1-C6	1-12	24	(E)			
BOLT, FLANGE (8X60)	1-C2	1-5	11	ELBOW, AIR CLEANER	1-C7	1-15	9
BOLT, GOVERNOR ARM	1-C7	1-15	14	ELEMENT, AIR CLEANER (DUAL)	1-C7	1-15	2
BOLT, PIVOT (8MM)	1-C6	1-12	24	EMBLEM (5.5)	1-D3	1-22	6
BOLT, STUD (6X109)	1-C1	1-2	14	EMBLEM (INTERNAL)	1-D3	1-22	6
BOLT, STUD (8X32)	1-C1	1-2	11	(F)			
BOLT-WASHER (6X20)	1-D2	1-20	22	FAN, COOLING	1-D1	1-18	1
BULK HOSE, FUEL (4.5X3000) (4.5X140)	1-C4	1-9	14	FILTER (OUTER)	1-C7	1-15	3
(C)				FLOAT SET	1-C6	1-13	4
CAMSHAFT ASSY.	1-C4	1-9	1	FLYWHEEL	1-D1	1-18	6
CAP ASSY., NOISE SUPPRESSOR	1-D1	1-19	2	(G)			
CAP ASSY., OIL FILLER	1-C2	1-5	4	GASKET, CARBURETOR	1-C6	1-13	18
CAP, FUEL FILLER	1-C2	1-5	5	GASKET, CASE COVER	1-C2	1-5	3
CAP, OIL FILLER	1-C8	1-17	21	GASKET, CASE COVER (NON-ASBESTOS)	1-C2	1-5	3
CARBURETOR ASSY. (BE65B B)	1-C8	1-17	22	GASKET, CYLINDER HEAD	1-C1	1-2	5
CASE, RECOIL STARTER *NH1* (BLACK)	1-C6	1-13	11	GASKET, CYLINDER HEAD COVER	1-C1	1-2	7
CASE, RECOIL STARTER *R280* (POWER RED)	1-C2	1-5	6	GASKET, ELBOW	1-C7	1-15	1
CASE, RECOIL STARTER *R8* (BRIGHT RED)	1-C8	1-17	22	GASKET, FUEL FILLER CAP	1-C8	1-17	23
CASE, RECOIL STARTER *T41* (BARTELL BLUE)	1-C6	1-13	5	GASKET, FUEL STRAINER CUP	1-C6	1-13	14
CHAMBER SET, FLOAT	1-C2	1-5	6	GASKET, INSULATOR	1-C6	1-13	16
CHOKE SET	1-C6	1-13	10	GASKET KIT	1-D3	1-23	1
CLAMP, CORD	1-C6	1-12	10	GASKET, MUFFLER	1-C8	1-16	7
CLIP, GOVERNOR HOLDER	1-C2	1-5	5	GASKET, OIL FILLER CAP	1-C2	1-5	7
CLIP, HARNESS	1-C6	1-12	10	GASKET SET	1-C2	1-5	8
CLIP, PISTON PIN (18MM)	1-C6	1-13	5	GASKET, VALVE	1-C6	1-13	2
	1-C1	1-3	15	GOVERNOR ASSY.	1-C7	1-14	29
	1-C6	1-12	10	GROMMET, AIR CLEANER	1-C1	1-3	4
	1-C4	1-8	6	GUIDE, EX. VALVE (OS)	1-C7	1-15	5
				GUIDE, RATCHET	1-C1	1-2	3
				GUIDE, VALVE (OS)	1-C5	1-10	5
					1-C1	1-2	2

DESCRIPTION INDEX

Description	Grid	Page	Ref	Description	Grid	Page	Ref
(H)				(O)			
HOLDER, CABLE	1-D2	1-20	12	OIL SEAL (25X41X6)	1-C1	1-3	17
HOLDER, GOVERNOR WEIGHT	1-C1	1-3	6	1-C2	1-5	9
(I)				O-RING (13.5X1.5) (ARAI)	1-C1	1-3	18
INSULATOR, CARBURETOR	1-C6	1-13	15	1-C8	1-17	29
(J)				(P)			
JET, MAIN (#65)	1-C7	1-14	36	PIN A, DOWEL (10X16)	1-C1	1-2	12
JET, MAIN (#68)	1-C7	1-14	36	PIN A, DOWEL (8X14)	1-C2	1-5	10
JET, MAIN (#70)	1-C7	1-14	36	PIN, GOVERNOR WEIGHT	1-C1	1-3	7
JET SET, PILOT (#35)	1-C7	1-14	37	PIN, LOCK (8MM)	1-C2	1-4	21
JOINT, FUEL TANK	1-C8	1-17	17	PIN, PISTON	1-C4	1-8	3
(K)				PIN, SPRING (2X12)	1-C7	1-14	35
KEY (4.78X4.78X38)	1-C3	1-6	15	PISTON (0.75)	1-C4	1-8	2
KEY, SPECIAL WOODRUFF (25X18)	1-D1	1-18	11	PISTON (OS 0.25)	1-C3	1-7	2
KNOB, RECOIL STARTER	1-C5	1-11	9	PISTON (OS 0.50)	1-C3	1-7	2
(L)				PISTON (STD)	1-C3	1-7	2
LABEL, CAUTION	1-D3	1-22	11	PIVOT, ROCKER ARM	1-C4	1-9	5
LABEL, FUEL CAUTION	1-D3	1-22	29	PLATE, LEVER SETTING	1-C7	1-14	27
LABEL, SPECIFICATION (EXTERNAL)	1-D3	1-22	17	PLATE, PUSH ROD GUIDE	1-C4	1-9	13
LEVER, CHOKE (STD)	1-C6	1-13	21	PLATE, SIDE	1-C6	1-12	7
LEVER, CONTROL	1-D2	1-20	9	PLATE, SIDE (OIL ALERT)	1-C6	1-12	7
LEVER, VALVE	1-C7	1-14	26	PLATE, SIDE (STD)	1-C6	1-12	7
LIFTER, VALVE	1-C4	1-9	4	PROTECTOR, MUFFLER	1-C8	1-16	3
(M)				PULLEY, STARTER	1-D1	1-18	5
MARK, CAUTION (EXTERNAL)	1-D3	1-22	7	(R)			
MARK, CHOKE	1-D3	1-22	13	RATCHET, STARTER	1-C5	1-10	4
MARK, OIL ALERT (E)	1-D3	1-22	18	REEL, RECOIL STARTER	1-C5	1-10	3
MARK, OIL ALERT (FRENCH)	1-D3	1-22	18	RETAINER, EX. VALVE SPRING	1-C4	1-9	11
MARK, OIL ALERT (GERMAN)	1-D3	1-22	18	RETAINER, IN. VALVE SPRING	1-C4	1-9	10
MUFFLER	1-C8	1-16	2	RING SET, PISTON (0.75)	1-C3	1-7	1
(N)				RING SET, PISTON (OS 0.25)	1-C3	1-7	1
NOZZLE, MAIN	1-C6	1-13	13	RING SET, PISTON (OS 0.50)	1-C3	1-7	1
NUT, CAP (6MM)	1-C7	1-15	10	RING SET, PISTON (STD)	1-C3	1-7	1
NUT, FLANGE (10MM)	1-C1	1-3	19	ROD ASSY., CONNECTING	1-C4	1-8	4
NUT, FLANGE (6MM)	1-C8	1-17	33	ROD ASSY., CONNECTING (US 0.25)	1-C4	1-8	4
.....	1-D2	1-21	29	ROD, GOVERNOR	1-D2	1-20	5
NUT, HEX. (8MM)	1-C8	1-16	22	ROD, PUSH	1-C4	1-9	2
NUT, PIVOT ADJ.	1-C4	1-9	15	ROPE, RECOIL STARTER (#5X55")	1-C5	1-11	10
NUT, SELF-LOCK (6MM)	1-D2	1-20	24	ROTATOR, VALVE	1-C4	1-9	12
NUT, SPECIAL (14MM)	1-D1	1-18	10	RUBBER, SUPPORTER (107MM)	1-C8	1-17	10
(S)				(S)			
				SCREW, PAN (3X6)	1-C7	1-14	32
				SCREW, PAN (3X8)	1-C7	1-14	32
				SCREW, PAN (5X25)	1-D2	1-21	25
				SCREW SET	1-C6	1-13	7
				SCREW SET B	1-C6	1-13	9
				SCREW SET, DRAIN	1-C6	1-13	8
				SCREW, SETTING	1-C5	1-11	12
				SCREW, TAPPING (4X6)	1-C8	1-16	24

DESCRIPTION INDEX

Description	Grid	Page	Ref	Description	Grid	Page	Ref
SCREW, TAPPING (5X8)	1-C8	1-16	14	WIRE, STOP SWITCH (370MM)	1-D1	1-19	15
SCREW, THROTTLE STOP	1-C6	1-13	12				
SCREW-WASHER (5X16)	1-D2	1-21	28				
SEAL, VALVE STEM	1-C4	1-9	18				
SHAFT, GOVERNOR ARM	1-C1	1-3	9				
SHROUD	1-C6	1-12	11				
SLIDER, GOVERNOR	1-C1	1-3	8				
SPACER, CARBURETOR	1-C6	1-13	17				
SPACER, CONTROL LEVER	1-D2	1-20	13				
SPARK PLUG (BPR5ES) (NGK)	1-C1	1-2	15				
SPARK PLUG (BPR6ES) (NGK)	1-C1	1-2	15				
SPARK PLUG (W16EPR-U) (DENSO)	1-C1	1-2	15				
SPARK PLUG (W20EPR-U) (DENSO)	1-C1	1-2	15				
SPRING, CABLE RETURN	1-D2	1-20	16				
SPRING, CONTROL ADJUSTING	1-D2	1-20	15				
SPRING, FRICTION	1-C5	1-10	6				
SPRING, GOVERNOR	1-D2	1-20	6				
SPRING, LEVER	1-D2	1-20	10				
SPRING, RECOIL STARTER	1-C5	1-10	7				
SPRING, RETURN	1-C5	1-10	8				
SPRING, THROTTLE RETURN	1-D2	1-20	7				
SPRING, VALVE	1-C4	1-9	9				
SPRING, VALVE LEVER	1-C7	1-14	28				
SPRING, WEIGHT RETURN	1-C4	1-9	6				
STARTER ASSY., RECOIL *NH1* (BLACK)	1-C5	1-10	1				
STARTER ASSY., RECOIL *R280* (POWER RED)	1-C5	1-10	1				
STARTER ASSY., RECOIL *R8* (BRIGHT RED)	1-C5	1-10	1				
STARTER ASSY., RECOIL *T41* (BARTELL BLUE) ...	1-C5	1-10	1				
SUB-HARNESS	1-C6	1-12	13				
SWITCH ASSY., ENGINE STOP	1-C6	1-12	14				
SWITCH ASSY., OIL LEVEL	1-C1	1-3	3				
(T)							
TANK, FUEL *NH1* (BLACK)	1-C8	1-17	20				
TANK, FUEL *R280* (POWER RED)	1-C8	1-17	20				
TANK, FUEL *R8* (BRIGHT RED)	1-C8	1-17	20				
TUBE, BREATHER	1-C1	1-2	8				
(V)							
VALVE, EX.	1-C4	1-9	8				
VALVE, IN.	1-C4	1-9	7				
VALVE SET, FLOAT	1-C6	1-13	3				
(W)							
WASHER, CONTROL LEVER	1-D2	1-20	11				
WASHER, DRAIN PLUG (10.2MM)	1-C1	1-3	14				
WASHER, PLAIN (6MM)	1-C2	1-4	20				
WASHER, THRUST (6MM)	1-C1	1-3	13				
WEIGHT, GOVERNOR	1-C1	1-3	5				
WINGNUT (6MM)	1-C7	1-15	11				
WINGNUT, TOOL BOX SETTING	1-C7	1-15	12				
	1-C7	1-15	13				