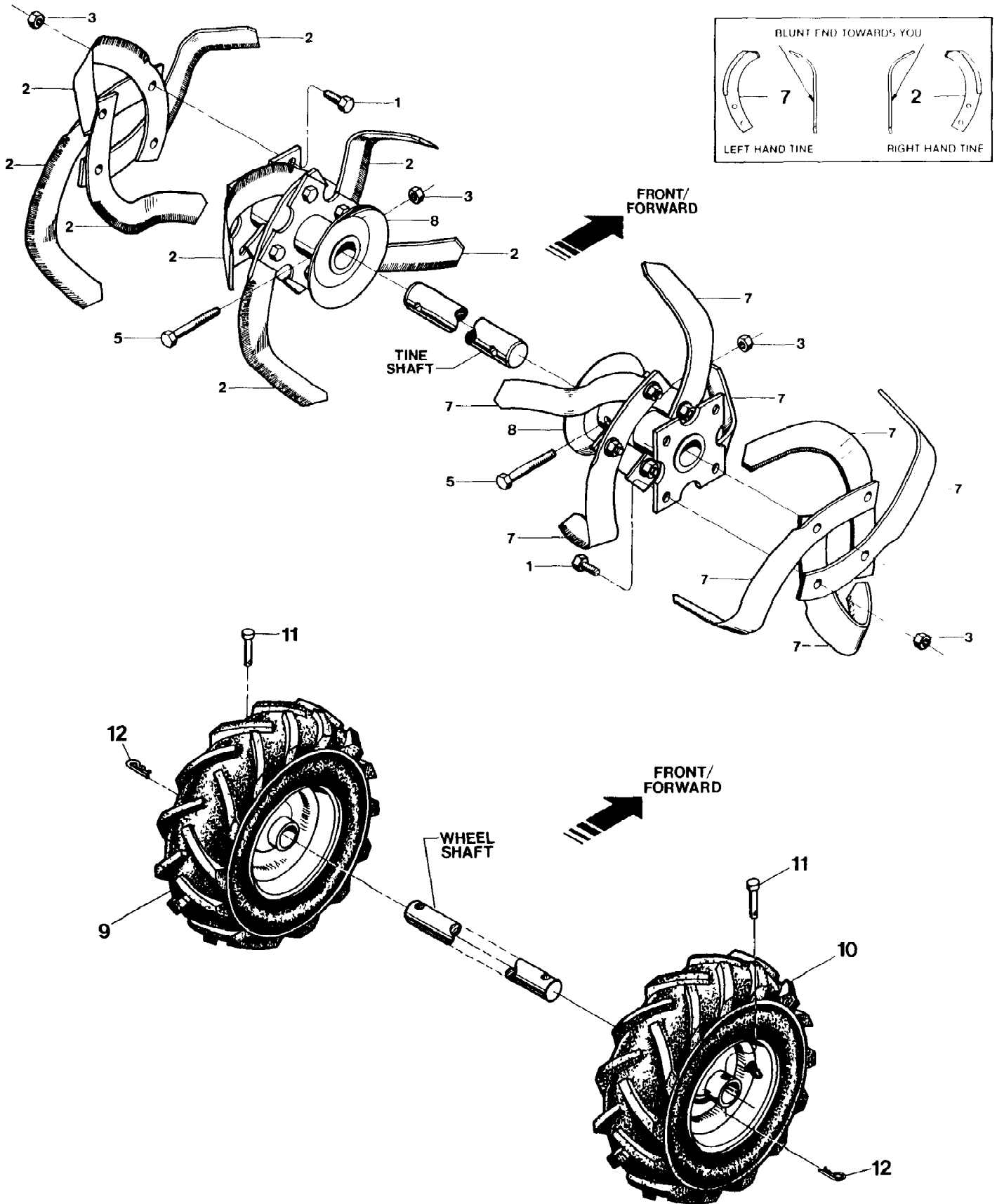


21A-530-081 Pony Tiller 15008 S/N 0400101-1199999
Bolo Tines & Wheels

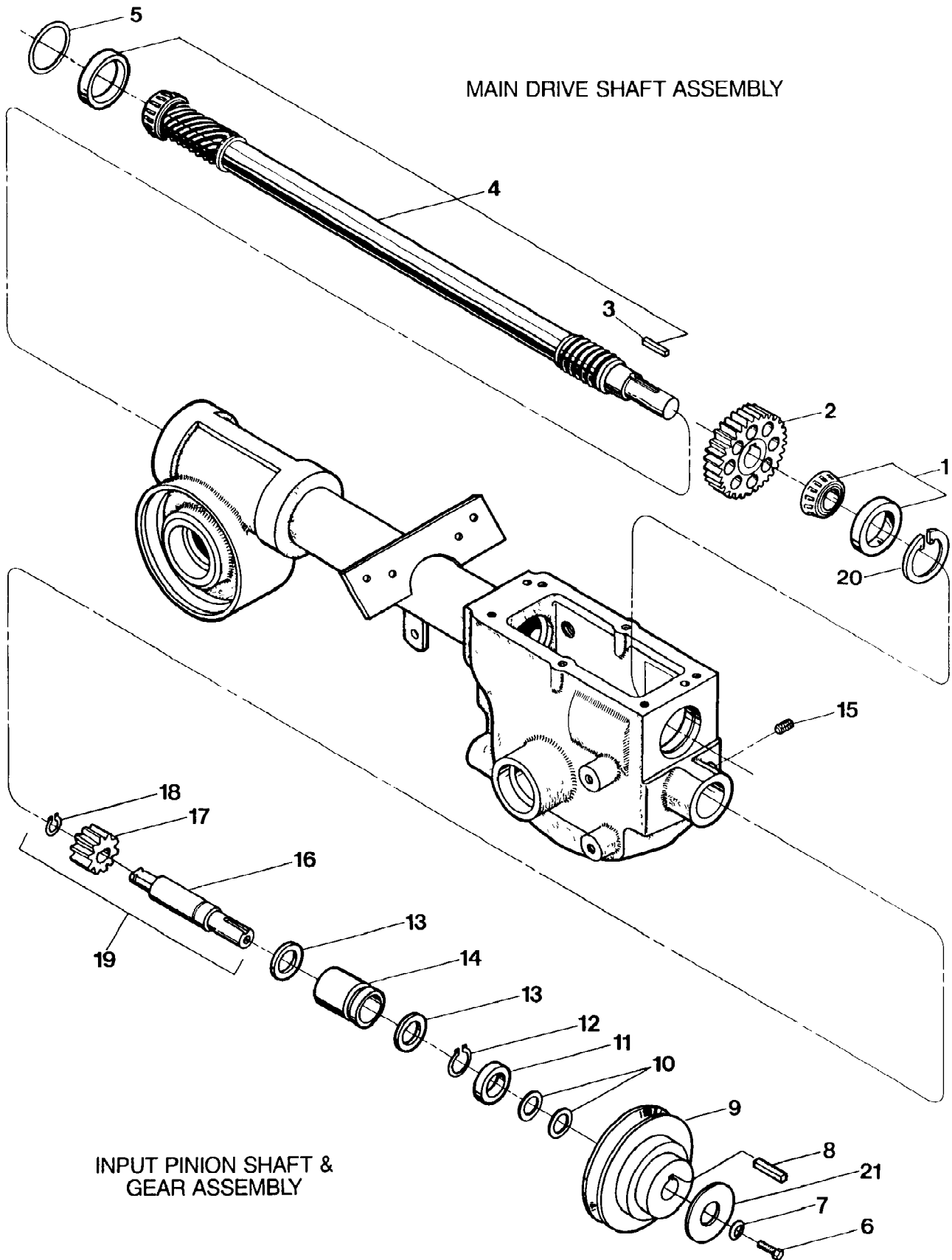


21A-530-081 Pony Tiller 15008 S/N 0400101-1199999
Bolo Tines & Wheels

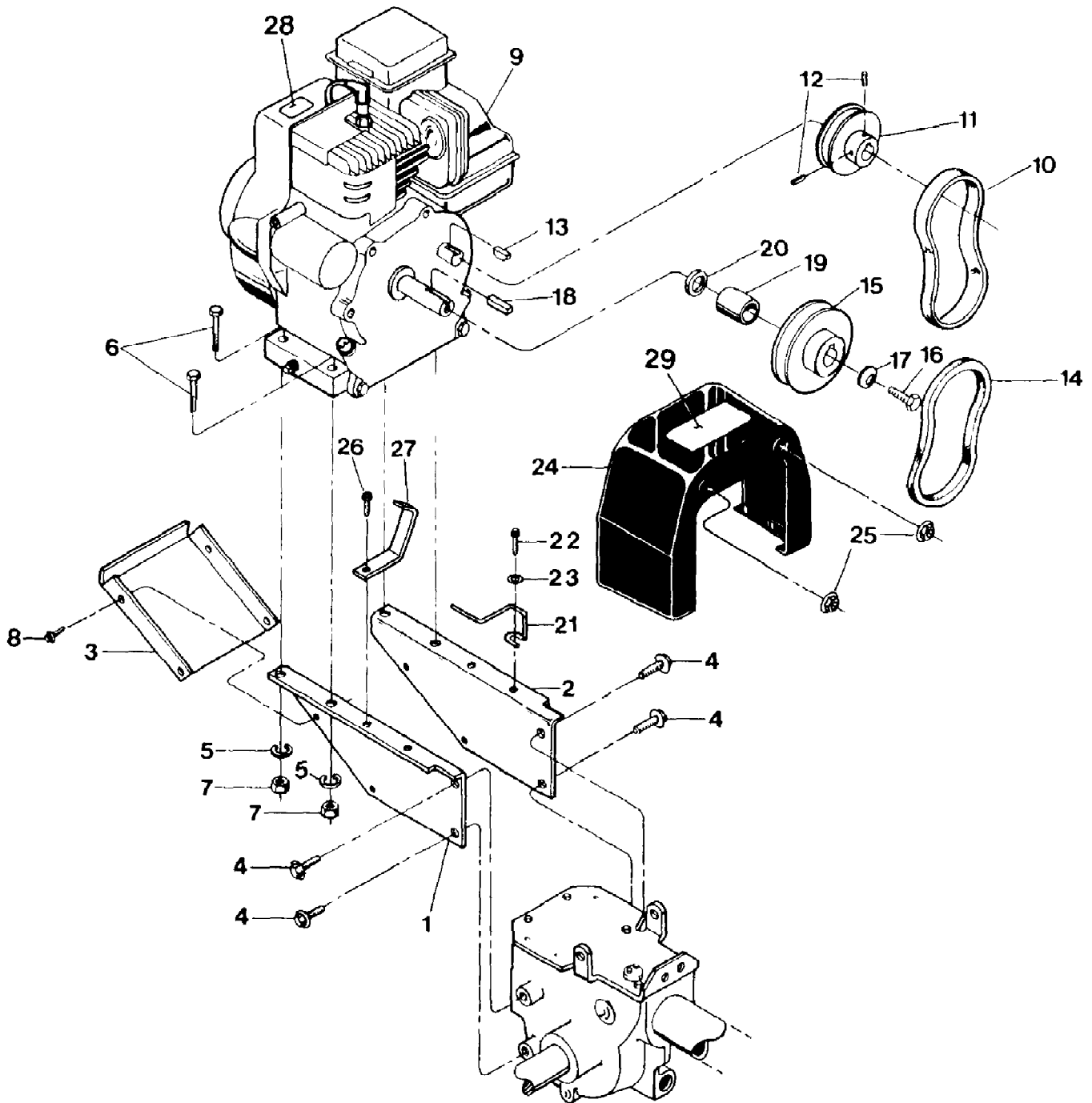
Page 2 of 22

Ref #	Part Number	Qty	S/P/F	Description
1	1100043	16	S/F	Screw-hex hd., 3/8-16 x 1-1/4"
2	1270-2A	8	S	Bolo Tine-single, right hand tine used on left side of tiller (Incl. two of each Ref. No.'s 1 and 3)
3	1733398	18	S	Hex Locknut, 3/8-16
5	1982612	2	S	Screw-hex hd., 3/8-16 x 2, GRADE 8
7	1270-1A	8	S	Bolo Tine-single, left hand tine used on right side of tiller (Incl. two of each Ref. No.'s 1 and 3)
8	1902154010	2	S	Tine Holder-for bolo tines, left and right sides
	1901118	1	S	Replacement set of 16 Bolo Tines Includes eight each of right hand and left hand tines, and sixteen each of Ref No.'s 1 and 3
9	20918-01	1	S/F	Wheel & Tire Assy-left side, 4.10 x 6 tire mounted on 6" gray wheel, tubeless pneumatic
10	20918-02	1	S	Wheel & Tire Assy-right side, same specs. as above
11	9380	2	S	Clevis Pin- 312 x 1-3/4 long
12	9338	2	S	Hitch Pin
	10802	1	S	Custom Tilling Tine Kit Includes Custom Tilling Tines (Extra Long-Wearing)
	2475-1	8	S/F	Bolo Tine, custom tilling, left hand (Included in Custom Tilling Tine Kit)
	2475-2	8	S/F	Bolo Tine, custom tilling, right hand (Included in Custom Tilling Tine Kit)
	1100043	16	S	Screws (Included in Custom Tilling Tine Kit)
	41733398	16		Locknuts (Included in Custom Tilling Tine Kit)

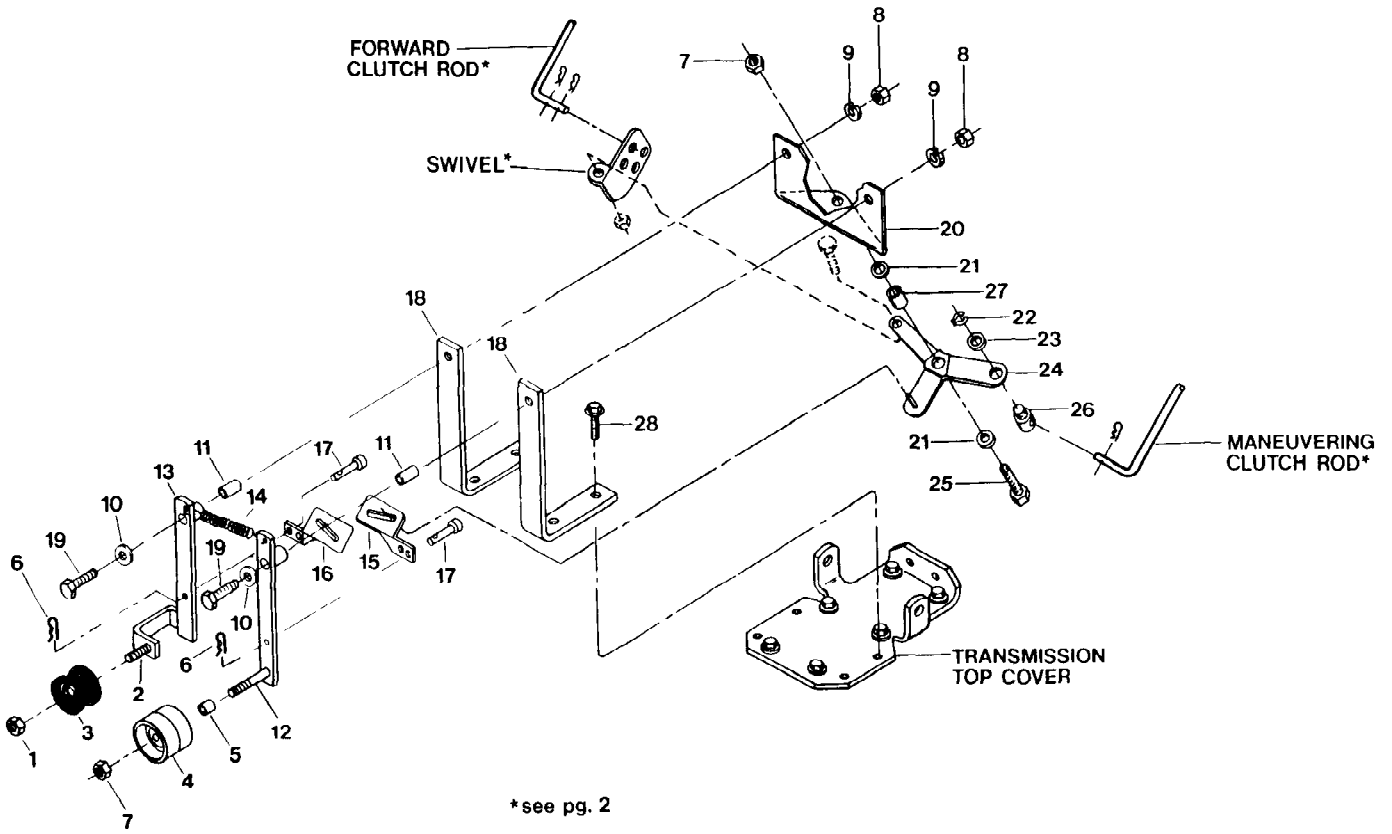
21A-530-081 Pony Tiller 15008 S/N 0400101-1199999
Drive Shaft, Input Pinion Shaft & Gear Assemblies



Ref #	Part Number	Qty	S/P/F	Description
1	1714	1	S	Bearing-tapered roller with race
2	20718	1	S	Gear-spur, main drive shaft
3	9301	1	S	Key-3/16 sq. x 1
4	GW-11603	1		Drive Shaft Main drive shaft is one-piece with integral, single-lead work-hardened worm at front to drive the wheel worm gear, and integral six-lead work-hardened worm at rear to drive the tiller gear (also includes pressed-on #1714 rear roller bearing, race for bearing and #9301 key)
5	1224-1	AR	S/F	Shim-rear bearing cap, .010 thick
5	1224-2	AR	S/F	Shim-same as above, but .030 thick
5	1224-3	AR	S/F	Shim-same as above, but .005 thick
	1325C	AR	S	Shim Set Includes the following shims two 1224-1, two 1224-2, one #1224-3
6	1100004	1	S/F	Screw-hex hd, 5/16-24 x 3/4
7	9944	1	S	Washer-disc spring (Concave surface faces pulley)
8	9301	1	S	Key-3/16 sq. x 1
9	20880	1		Pulley-transmission drive
10	1440	2	S	Washer-support
11	1983632	1	S	Oil Seal-input pinion shaft, front
12	9500	1	S	Ring-retaining (snap ring), external
13	9953	2	S	Washer-thrust
14	9428	1	S	Bushing
15	9677	1	S/F	Set Screw-5/16-18 x 3/8
16	20791	1	S	Input Pinion-steel shaft
17	20792	1	S	Gear-input pinion
18	9093	1	S	Retainer-snap ring, external
19	20799	AR	S	Pinion Assy (Incl one each of Ref. No.'s 16, 17 and 18)
20	9517	1	S	Retainer-snap ring, internal
21	94018	1	S	Washer-sheave shoulder



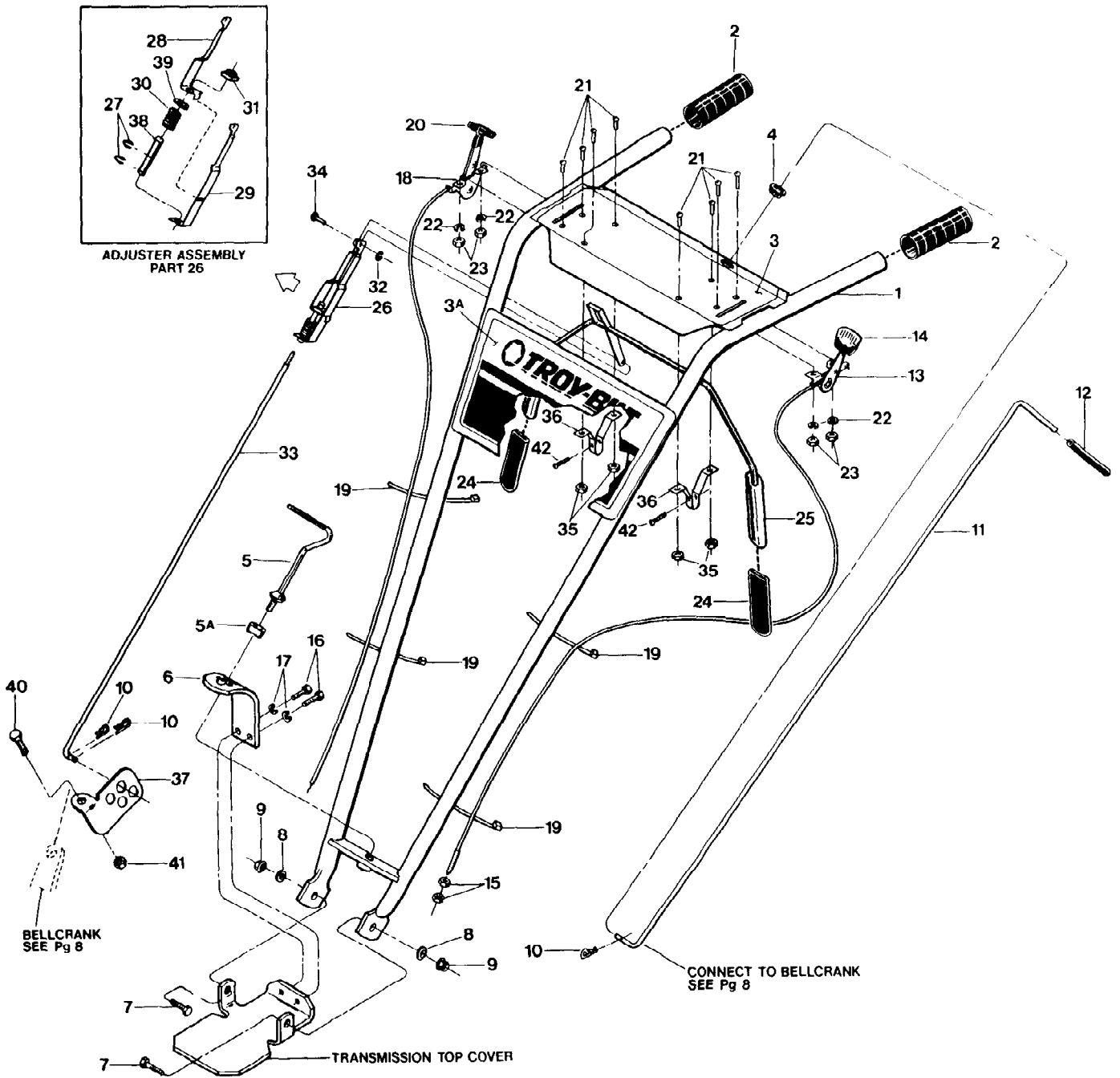
Ref #	Part Number	Qty	S/P/F	Description
1	20754	1		Support Bracket-engine, left side
2	20755	1	S	Support Bracket-engine, right side
3	20673	1	S	Support Bracket (Pan)-engine, front
4	1186329	4	S/F	Screw-flanged hex hd., 5/16-18 x 3/4
5	1100242	4	S	Lockwasher-5/16
6	1100799	4	S/F	Screw-hex hd., 5/16-18 x 1-1/2
7	1186321	4		Nut-hex, 5/16-18
8	1900396	4	/P	Screw-hex hd., 10-32 x 1/2, self-tapping
9		1		Engine-5HP Briggs & Stratton, standard recoil start See your local authorized engine service dealer for engine parts or service. Refer to engine nameplate for engine type and code information.
9		1		Engine-5HP Briggs & Stratton, electric start See your local authorized engine service dealer for engine parts or service. Refer to engine nameplate for engine type and code information.
10	97075	1	S	Flat Belt-reverse drive (see belt set P/N 11535 below)
11	20881	1		Reverse Pulley-engine driven, one groove for flat belt (Ref No. 10)
12	9561	2	S/F	Set Screw-Socket Head, 1/4-20 x 1/4
13	9361	1	S	Key-Woodruff (size #5), reverse pulley to reverse PTO shaft
14	1909404	1	/P	V-Belt-forward drive (see belt set P/N 11535 below)
15	20765	1		Forward Pulley-engine drive, one groove, single belt
16	1100004	1	S/F	Screw-hex hd, 5/16-24 x 3/4"
17	9944	1	S	Washer-disc spring (Concave surface faces forward pulley).
18	9301	1	S	Key-3/16 sq x 1, forward pulley to forward PTO shaft
19	97077	1		Spacer
20	1138-2	AR	S	Shim
21	20555	1		Belt Guide-forward drive belt
22	9573	1	S/F	Screw-hex hd, self-tapping, 1/4-20 x 3/4
23	1107381	1	S	Washer-plain (flat), 1/4, S A E
24	1904569	1	S	Cover (Incl Ref No 29)
25	1186391	2	S	Nut-5/16-18, locking, whiz-style
	11535	1		Belt Set (Incl Ref No's 10 and 14)
26	9552	1	S/F	Screw-flanged hex hd, self-tapping, 1/4-20 x 1/2
27	20654	1		Belt Guide-reverse drive belt
28	1900767	1		Decal-Stabilization
29	1904557	1		Decal-Hot surfaces/belt warning



21A-530-081 Pony Tiller 15008 S/N 0400101-1199999
Forward/Reverse Idler Assembly

Page 8 of 22

Ref #	Part Number	Qty	S/P/F	Description
1	1185506	1	S	Locknut-hex, 3/8-16
2	1110043	1	S/F	Screw-hex hd, 3/8-16 x 1-1/4
3	1902818	1	/P	Pulley-idler, reverse tiller direction
4	9090	1	S	Pulley-idler, forward tiller direction
5	9091	1		Spacer
6	9338	2	S	Hairpin Cotter
7	1110108	2	S	Locknut-hex, 3/8-16
8	1186230	2	S	Nut-hex, 5/16-18
9	1100242	2	S	Lockwasher-5/16
10	20545	2	S	Washer-plain, 5/16
11	9479	2	S	Pivot Busing
12	20899	1	S	Idler Arm-left, forward tiller direction
13	1909682010	1		Idler Arm-right, reverse tiller direction
14	1492	1	S	Spring
15	20517-01	1		Forward Link
16	20517-02	1		Reverse Link
17	9340	2		Pin
18	20751	2		Mounting Bar
19	1111607	2	S/F	Screw-hex hd, 5/16-18 x 2-1/4
20	20842	1	S	Shifting Base
21	20553	2	S	Spacer-Bushing
22	9532	1	S	Klip Ring
23	20546	1	S	Washer-pivot
24	20838	1	S	Bellcrank
25	1100043	1	S/F	Screw-hex hd, 3/8-16 x 1-1/4
26	20506	1		Pivot-for Maneuvering Clutch lever
27	20532	1	S	Bushing-bellcrank
28	1186331	4	S/F	Screw-flanged hex hd, 5/16-18 x 1

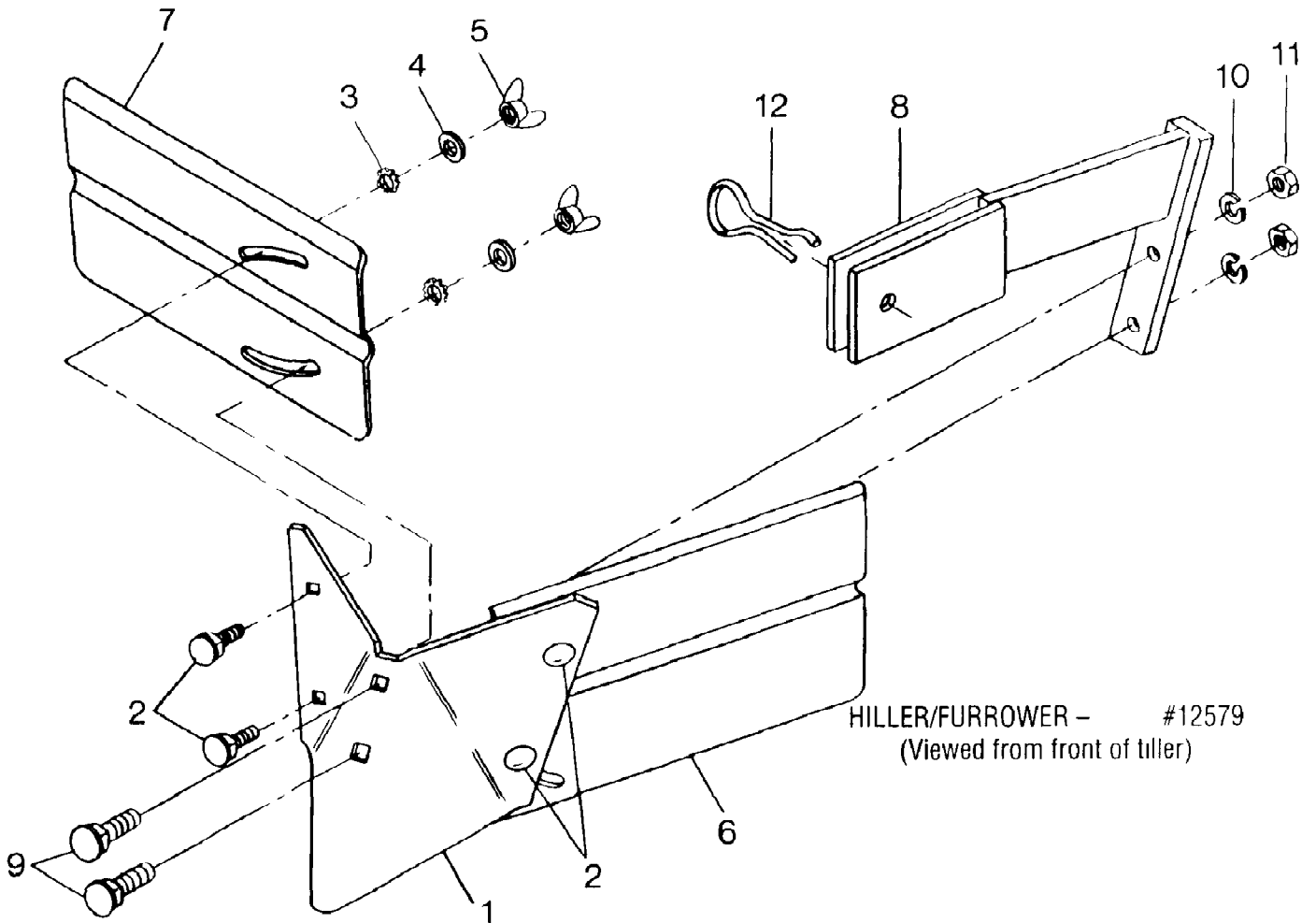


Ref #	Part Number	Qty	S/P/F	Description
1	20928	1	S	Handlebars (Incl Ref. No.'s 2, 3, 3A and 4)
2	9126	2	S	Grip-handlebars
3	1901867	1	/P	Decal-for operator control panel
3A	20924	1	S	Decal-Troy-Bilt Pony (Model name, logo)
4	9251	1		Grommet-plastic (Part of operator control panel)
5	20703	1		Handle, Height Adjustment
5A	9955	1	S	Washer-keyed
6	1900475010	1	/P	Bracket-handlebar height adjust
7	1100046	2	S/F	Screw-hex hd., 3/8-16 x 1
8	9904	2	S	Washer-plain (flat) 3/8, S.A.E.
9	9837	2	S	Locknut-hex, 3/8-16
10	9338	3	S	Hair Pin Cotter
11	20830	1		Maneuvering Clutch Lever complete (Incl grip, #9198)
12	9198	1		Grip-maneuvering clutch lever
13	9442	1	S	Wheel Gear Control & Cable Assy (Incl Ref No.'s 14, 15, 19, 21, 22, and 23)
14	9057	1	S	Knob-wheel gear control lever
15	1186211	2	/P	Nut-hex, 5/16-24, wheel gear cable adjustment
16	1100068	2	S/F	Screw-hex hd., 3/8-16 x 3/4
17	1100243	2	S	Lockwasher-3/8
18	9440	2		Engine Throttle Control & Cable
19	9202	4	S	Ties-plastic
20	9212	1	S	Knob-throttle control lever
21	1114748	8	/P	Screw-round hd, No 10-32 x 1/2
22	1100240	4	/P	Lockwasher-No 10
23	1186208	4	/P	Nut-hex, No 10-32
24	9390	2	S	Grip-paddle
25	20863	1	S	Bail-forward clutch control (Incl. two Grips, Ref No. 24)
26	20862	1	S	Adjuster Assembly (Incl Ref No's 27, 28, 29, 30, 38 and 39)
27	9532	2	S	Klip Ring
28	20808	1	S	Adjuster, Right Side
29	20809	1	S	Adjuster, Left Side
30	9059	1	S	Spring-Adjuster
31	9522	1		Nut-rectangular
32	9386	1		Klip Ring
33	20831	1	S	Rod-forward clutch
34	1903336	1	S	Pin-Clevis
35	9853	4	S	Sems Nut
36	20806	2	S	Bracket-bail support
37	20888	1	S	Swivel
38	9432	1		Bushing
39	9973	1		Washer
40	1100805	1	S/F	Screw-hex hd, 1/4-20 x 3/4
41	9811	1		Nut - 1/4-20

21A-530-081 Pony Tiller 15008 S/N 0400101-1199999
Handlebar Assembly & Control Levers

Page 11 of 22

Ref #	Part Number	Qty	S/P/F	Description
42	9552	2	S/F	Screw - flanged hex hd, self-tapping, 1/4-20 x 1/2

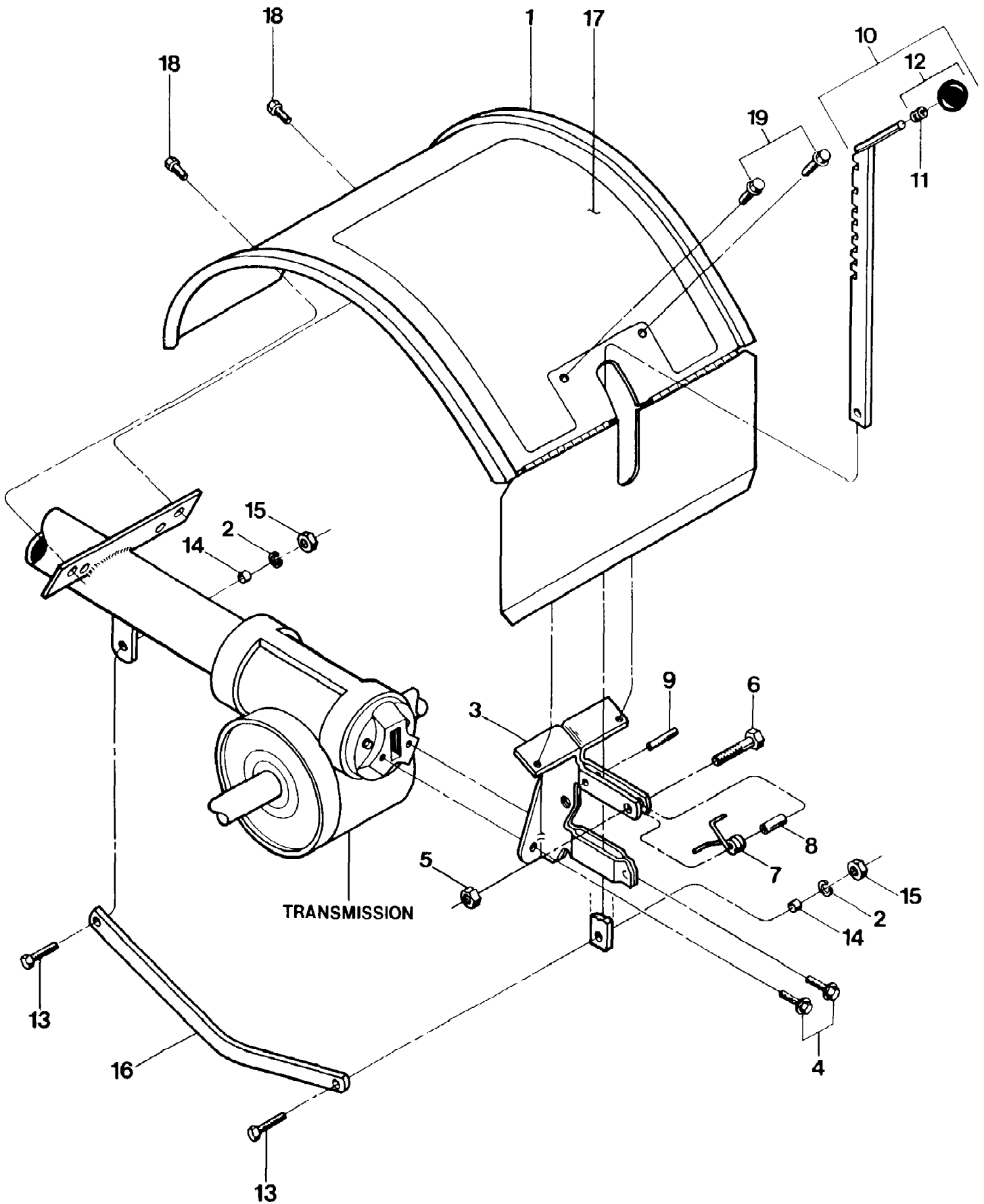


21A-530-081 Pony Tiller 15008 S/N 0400101-1199999
Hiller/Furrower Attachment

Page 13 of 22

Ref #	Part Number	Qty	S/P/F	Description
1	2735	1	S	Furrower-blade only
2	1186098	4	/P	Carriage Bolt-5/16-18 x 3/4
3	1177548	4	S	Star Washer-external tooth, 5/16
4	9902	4		Plain Washer-5/16 S A E
5	9824	4	S	Wing Nut-5/16-18
6	2736-01	1	S	Hiller Wing-left
7	2736-02	1	S	Hiller Wing-right
8	2636	1	S	Bracket-blade mounting
9	9725	2	S	Carriage Bolt-blade mounting, 3/8-16 x 1-1/2
10	1100243	2	S	Lockwasher-3/8, plated
11	1186231	2	S	Nut-hex, 3/8-16, plated
12	9318	1	S	Pin-clinch
		1		Hiller/Furrower-complete attachment (Owner must bolt blade to mounting bracket, and wings to blade). Instructions included..

21A-530-081 Pony Tiller 15008 S/N 0400101-1199999
Hood, Bracket & Depth Regulator



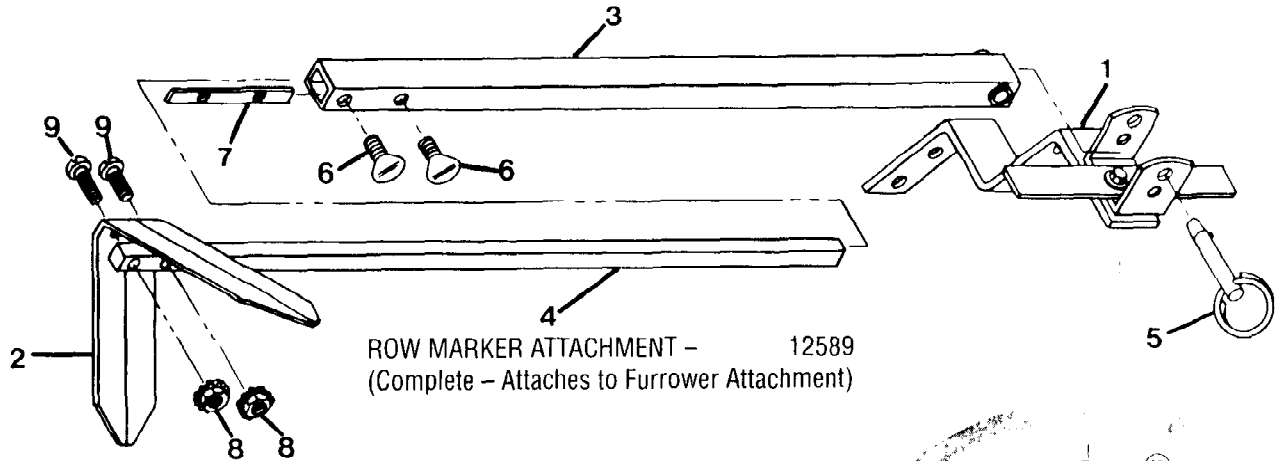
21A-530-081 Pony Tiller 15008 S/N 0400101-1199999
Hood, Bracket & Depth Regulator

Page 15 of 22

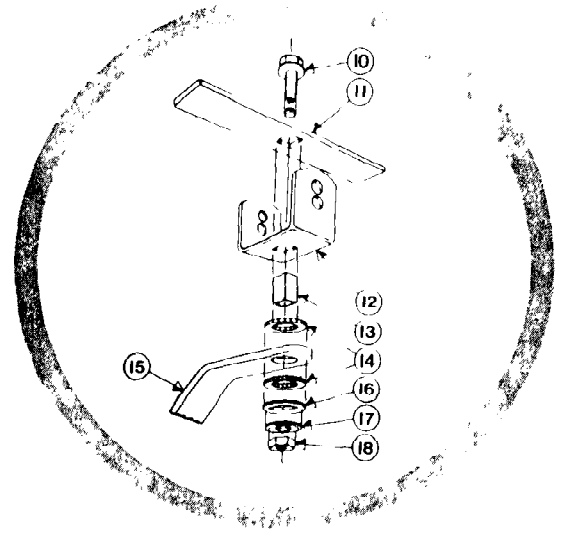
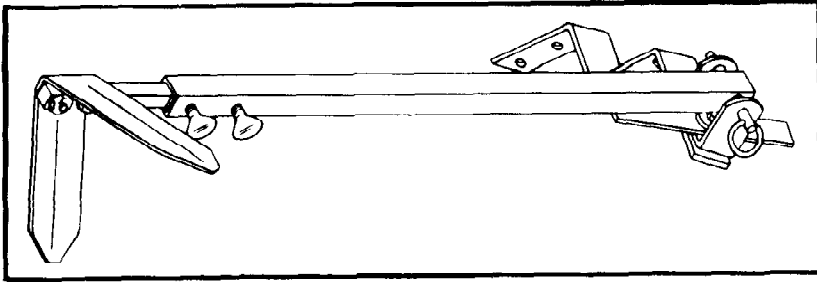
Ref #	Part Number	Qty	S/P/F	Description
1	1904568	1	S	Hood-tine cover, with hinged flap (Incl. Ref. No. 17)
2	1100243	2	S	Lockwasher-3/8
3	2527	1	S	Bracket-hood & depth regulator (Incl. Ref. No. 9)
4	90038	2	F	Screw-flanged hex hd., 5/16-18 x 5/8
5	9811	1		Locknut-hex, 1/4-20
6	1100069	1	S/F	Screw-hex hd., 1/4-20 x 1
7	9384	1	S	Spring-depth regulator plunger
8	9438	1		Spacer
9	9308	1	S	Roll Pin-1/4 x 1 (Spiral)
10	1117A	1	S	Bar Assembly-depth adjustment (Incl. Ref. No's. 11 and 12)
11	9120	1	S	Ring-retaining, tolerance ring
12	9119	1	S	Knob-depth regulator (Incl. Ref. No. 11)
13	1100043	2	S/F	Screw-hex hd, 3/8-16 x 1-1/4
14	1113-1	2	S	Bushing-spacer, drag bar
15	1186231	2	S	Nut-hex, 3/8-16
16	20775	1	S	Drag Bar-depth regulator
17	1904545	1		Decal-tiller operating instructions
18	9553	2	S/F	Screw-hex hd, self-tapping, 5/16-18 x 1/2
19	9552	2	S	Screw-flanged hex hd, self-tapping, 1/4-20 x 1/2

21A-530-081 Pony Tiller 15008 S/N 0400101-1199999
Row Marker & Bumper Attachments

ROW MARKER ATTACHMENT

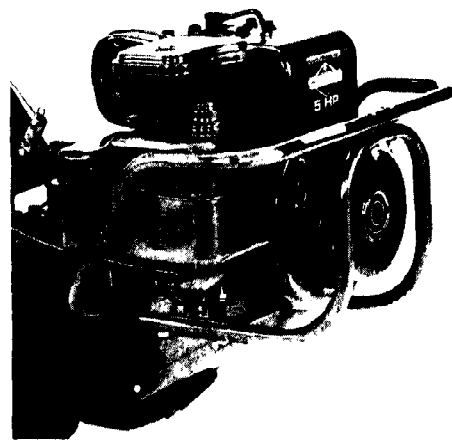
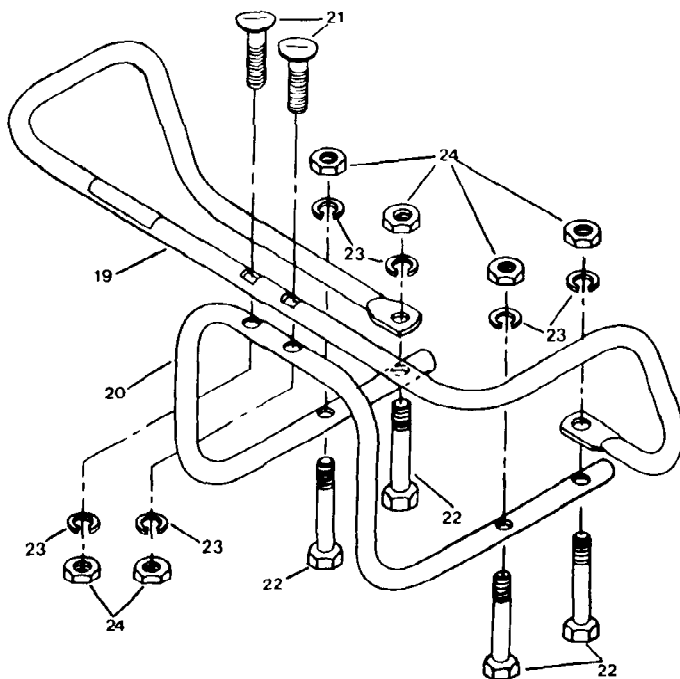


ROW MARKER ATTACHMENT - 12589
(Complete - Attaches to Furrower Attachment)



MAIN SUPPORT & YOKE ASSEMBLY - 1904522001

BUMPER ATTACHMENT



BUMPER ATTACHMENT 12590
(Viewed from front of tiller)

21A-530-081 Pony Tiller 15008 S/N 0400101-1199999
Row Marker & Bumper Attachments

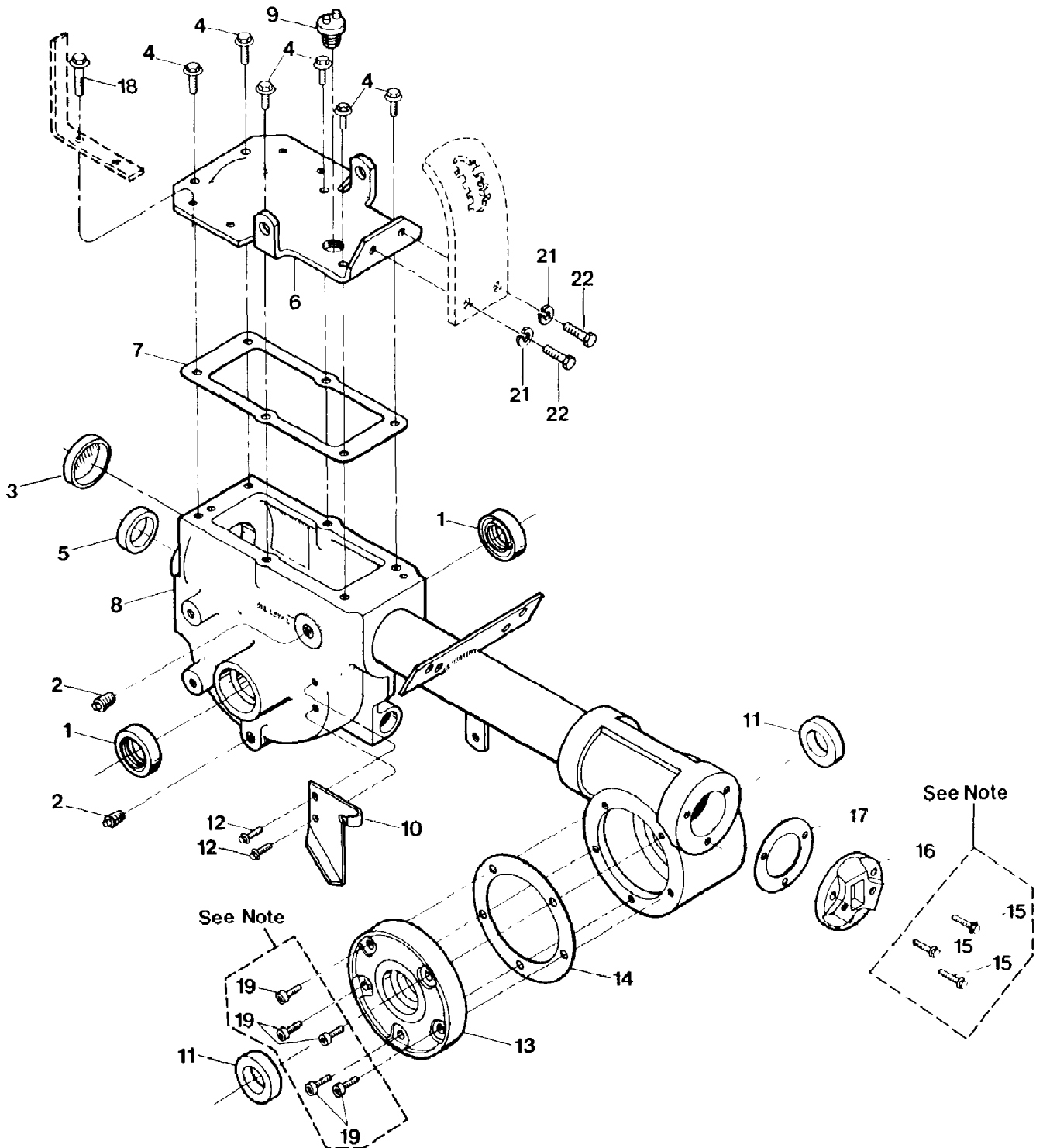
Page 17 of 22

Ref #	Part Number	Qty	S/P/F	Description
1	1904522001	1		Main Support & Yoke Assy complete
2	1594	1	S	Marker Blade-blade only
3	1904524001	1		Marker Arm-main arm
4	1904523001	1		Marker Arm-extension arm with stop pin
5	9347	1	S/F	Hitch Pin (Incl. in Hardware Pkg #1837)
6	9786	2	F	Thumbscrew-1/4-20 x 1/2, Not avail. sep. (see hardware pkg. #1837)
7	1596	1	S/F	Nut Bar (Incl. in hardware pkg #1837)
8	9828	2	F	Nut-hex, 10-24 w/attached start washers Not avail sep. (see hardware pkg #1837)
9	1100135	2	/P/F	Screw-round hd,10-24 x 1 Not avail. sep (see hardware pkg #1837)
	1837	1	S	Hardware Package Includes one #9347 hitch pin (Ref 5), two #9786 thumbscrews (Ref 6), one #1596 nut bar (Ref. 7), two #9828 hex nuts (Ref 8), two 1100135 screws (Ref. 9)
		1		Row Marker Attachment & Pony Hiller/Furrower Attachment complete Incl. #12579 Pony Hiller/Furrower and #12589 Row Marker
		1		Row Marker Attachment complete Attaches to furrower attachment #12579, includes #1904522001 Main Support & Yoke Assy
10	1186349	1	/P/F	Screw-hex flanged locking, 3/8-16 x 1-1/2
11	1593	1	S	Stop Bar
12	1592	1	S	Yoke
13	1591	1	S	Tube Key-square
14	1590	2	S	Washer-friction
15	1588	1	S	Main Support
16	1589	1	S	Washer-square hole
17	9925	1		Washer-disc spring
18	1186231	1	S	Nut-hex 3/8-16
19	1901456001	1		Bumper-top section
20	1900769001	1		Bumper-bottom section
21	9795	2	S	Bolt-curved head, 5/16-18 x 2 (Special bolt), also see #1874 hardware kit
22	1111608	4	F	Bolt-hex hd, 5/16-18 x 2-1/2, Not avail. separately (order #1874 hardware kit)
23	1100242	6	S/F	Lockwasher-5/16, Not avail. separately (order 11874 hardware kit)
24	1186230	6	S/F	Nut-hex, 5/16-18, Not avail. separately (order #1874 hardware kit)
	1874	1		Hardware Kit Includes two #9795 curved head bolts, four #1111608 hex hd bolts, six #1100242 lock-washers, six #1186230 hex nuts

21A-530-081 Pony Tiller 15008 S/N 0400101-1199999
Row Marker & Bumper Attachments

Page 18 of 22

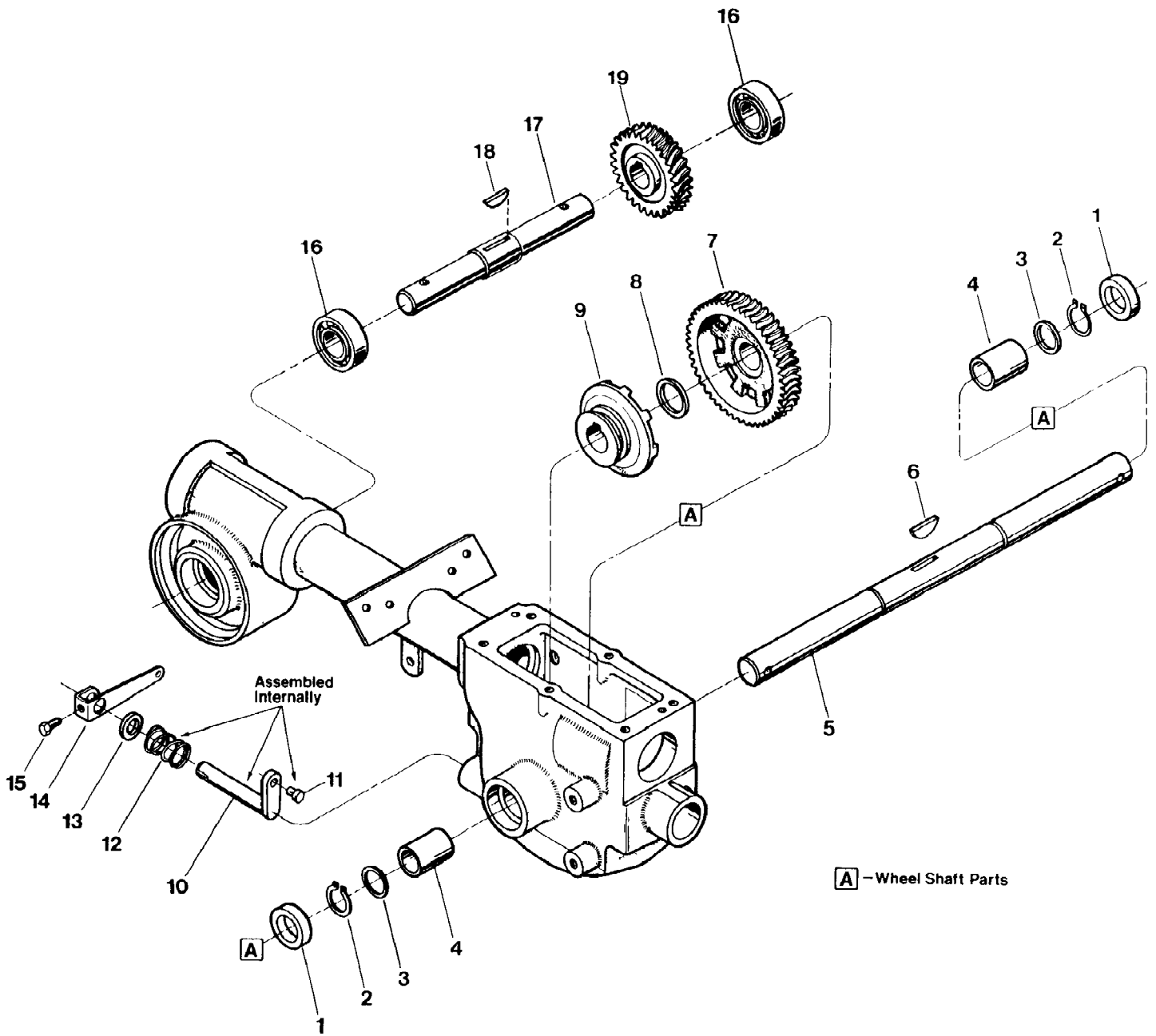
Ref #	Part Number	Qty	S/P/F	Description
		1		Bumper Attachment Complete attachment with mounting instructions included



21A-530-081 Pony Tiller 15008 S/N 0400101-1199999
Transmission Housing, Covers, Seals, Gaskets & Plugs

Page 20 of 22

Ref #	Part Number	Qty	S/P/F	Description
1	9621	2	S	Oil Seal-double lip, wheel shaft, right and left sides
2	9726	2	S	Plug-pipe, 1/4, oil level hole and gear oil drain hole
3	97076	1	S	Seal-transmission bore
4	1186329	6	S/F	Screw-flanged hex hd., 5/16-18 x 3/4
5	1983632	1	S	Oil Seal-input pinion shaft
6	11513	1		Cover-top of transmission (incl. four of Ref No. 18 and two of each of Ref No.'s 21 and 22)
7	20694	1	S	Gasket-transmission top cover
8	20893	1	S	Transmission case, tube and rear housing assembly
9	9467	1	S	Plug-gear oil fill hole
10	20889	1		Plate-wheel drive cable mounting.
11	97073	2	S	Oil Seal-tiller shaft, left and right sides
12	90038	2	F	Screw-flanged hex hd., 5/16-18 x 5/8
13	20873	1	S	Cover-tiller housing, left side
14	1129-1	AR	S	Gasket-tiller housing cover, .010 (fits all covers)
15	1915089	AR	/P/F	Screw Kit includes three (3) 1/4-20 x 7/8" self-sealing screws
16	1900881010	1	S	Cap-rear bearing
17	1124-2	AR	S	Gasket-rear bearing cap, .010 thick
18	1186331	4	S/F	Screw-flanged hex hd, 5/16-18 x 1
19	1915087	AR	/P/F	Screw Kit includes five (5) 1/4"-20 x 5/8" self-sealing screws
21	1100243	2	S	Lockwasher-3/8
22	1100068	2	S/F	Screw-hex hd, 3/8-16 x 3/4



Ref #	Part Number	Qty	S/P/F	Description
1	9621	2	S	Oil Seal-left and right sides
2	9511	2	S	Ring-retaining, heavy-duty, external
3	1166-1	AR	S	Shim-1-1/64 I.D., .062 thick
	1166-2	AR	S	Shim-as above, but .030 thick
	1166-3	AR	S	Shim-as above, but .015 thick
	1166-4	AR	S	Shim-as above, but .010 thick
4	1086	2	S	Bushing
5	20711	1	S	Wheel Shaft (axle) (Incl. Ref. No. 6)
6	9373	1	S	Key-hi-pro (1/4 x 1-5/16), clutch to wheel shaft
7	20914	1	S	Gear-wheel drive (worm gear), cast iron
8	9935	1	S	Shim-between key and gear (1.016 I.D. x 1.468 O.D. x .062 thick)
9	20712	1	S	Clutch-wheel drive, cast iron
10	20879	1	S	Eccentric Shaft-wheel clutch shifting
11	1442	1	S	Pin-eccentric shaft
12	9055	1	S	Spring
13	9622	1	S	Oil Seal-eccentric shaft
14	20757	1		Lever-eccentric shaft
15	1100804	1	S/F	Screw-hex hd, 1/4-20 x 1/2
16	97074	2	S	Ball Bearing - for tiller shaft
17	20896	1	S	Tiller Shaft Incl Ref No 18
18	1104	1	S	Key-woodruff, 1/4 x 1-1/4, for tiller shaft/worm gear
19	20913	1	S	Worm Gear-bronze, tiller drive