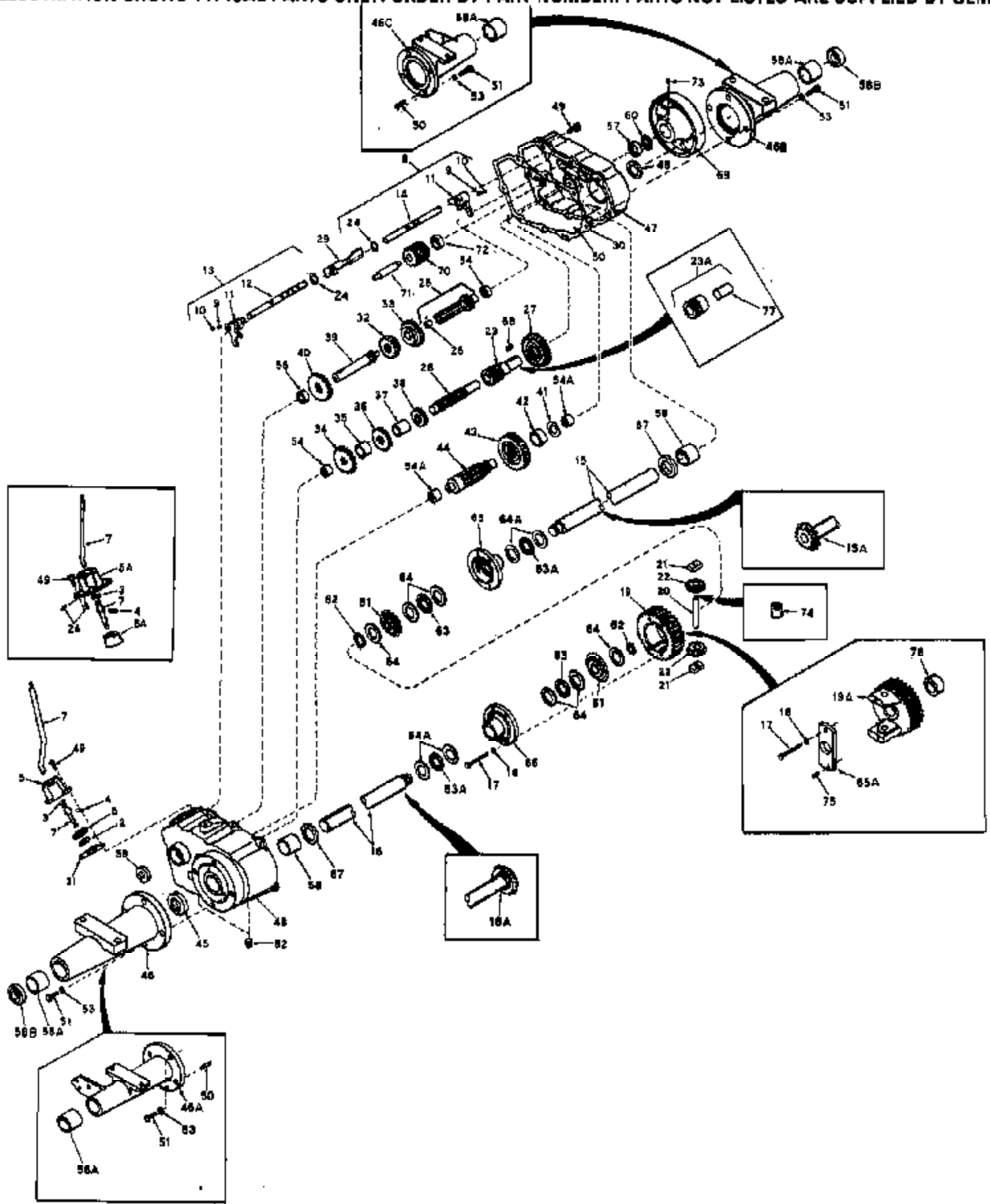


**ILLUSTRATION SHOWS TYPICAL PARTS ONLY. ORDER BY PART NUMBER. PARTS NOT LISTED ARE SUPPLIED BY OEM.**



| Ref # | Part Number | Qty         | Description   |
|-------|-------------|-------------|---|
| 2A    | 792000      |             | Pin, Roll   |
| 3     | 792001      |             | Ring, Quad  |
| 4     | 792049      |             | Pin, Drive  |
| 5A    | 784018      |             | Housing, Shift lever (For use on models with rollpins, Ref. No. 2A) |
| 6A    | 784028      |             | Keeper, Shift lever (Cone shaped styl e)                            |
| 7     | 784030      |             | Lever, Shift  |
| 8     | 784013      |             | Rod Assy., Shift (Incl. 9, 10, 11 & 1 4)                            |
| 9     | 792003      |             | Spring  |
| 10    | 792004      |             | Ball, Steel   |
| 11    | 784004      |             | Fork, Shifter   |
| 12    | 784012      | 1700-1700-1 | Rod, Shifter  |
| 13    | 784010      | Peerless    | Rod Assy., Shift (Incl. 9 thru 12)                                  |
| 14    | 784009      |             | Rod, Shifter  |
| 15A   | 774013      |             | Axle Assy., Right hand (12.562 long)                                |
| 16A   | 774014      |             | Axle Assy., Left hand (13.531 long)                                 |
| 17    | 792014      |             | Screw, 5/16-24 x 7/8"   |
| 18    | 792015      |             | Lockwasher, 5/16"   |
| 19A   | 778044      |             | Gear, Ring  |
| 20    | 786007      |             | Pin, Drive (.500 dia. x 3.875 long)                                 |
| 22    | 778014      |             | Pinion, Bevel   |
| 23A   | 778040      |             | Idler Pinion & Bushing (Incl. 77)                                   |
| 25    | 776003      |             | Shaft & Bearing Assy., Shifter (Incl 26)                            |
| 26    | 780018      |             | Bearing (.437 ID x .625 OD x 500 long )                             |
| 27    | 778037      |             | Gear, Idler   |
| 28    | 776004      |             | Shaft, Idler (.873 dia. x 6.062 long)                               |
| 29    | 784074      |             | Stop, Shifter   |
| 30    | 788026      |             | Gasket, Case & Cover  |
| 31    | 788003      |             | Gasket, Shift lever housing   |
| 32    | 778006      |             | Gear, Shifting (20 teeth)   |
| 33    | 778020      |             | Gear Shifting (26 teeth)  |
| 34    | 778007      |             | Gear, Spur (26 teeth)   |
| 35    | 786002      |             | Spacer (.885 ID x 1.125 OD x .880 lon g)                            |
| 36    | 778009      |             | Gear, Spur (22 teeth)   |
| 37    | 786001      |             | Spacer (.885 ID x 1.125 OD x 1.255 lo ng)                           |
| 38    | 778008      |             | Gear, Spur (16 teeth)   |
| 39    | 776020      |             | Shaft, Input (3.944 long)   |
| 40    | 778004      |             | Spur Gear, Input shaft  |
| 42    | 786003      |             | Spacer (.760 ID x 1.250 OD x .687 lon g)                            |
| 43    | 778010      |             | Gear, Output  |
| 44    | 776019      |             | Pinion, Output (10 teeth)   |
| 45    | 788007      |             | Seal, Oil   |
| 46A   | 782005      |             | LH Axle Housing (8.359 long)  |
| 46C   | 782004      |             | RH Axle Housing (5.781 long)  |
| 47    | 772005      |             | Cover Transaxle   |
| 48    | 770005      |             | Case, Transaxle   |
| 49    | 792007      |             | Screw, 1/4-20 x 3/4"  |
| 50    | 792008      |             | Pin, Dowel (.250 dia. x .750 long)                                  |
| 51    | 792014      |             | Screw, 5/16-24 x 7/8"   |
| 52    | 792010      |             | Plug, Pipe  |
| 53    | 792015      |             | Lockwasher, 5/16"   |
| 54    | 780013      |             | Bearing (closed end)  |
| 54A   | 780013      |             | Bearing (closed end)  |
| 56    | 780011      |             | Bearing   |
| 57    | 780013      |             | Bearing (closed end)  |

| Ref # | Part Number | Qty | Description            |
|-------|-------------|-----|------------------------|
| 58A   | 780017      |     | Bushing                |
| 58    | 780019      |     | Bushing                |
| 59    | 788009      |     | Seal, Oil              |
| 65A   | 778044      |     | Cap, Differential      |
| 70    | 776008      |     | Idler, Reverse         |
| 71    | 776008      |     | Shaft, Reverse idler   |
| 72    | 786008      |     | Spacer, Reverse idler  |
| 74    | 786010      |     | Spacer                 |
| 75    | 792023      |     | Pin, Roll (3/16 x 3/4) |
| 76    | 786018      |     | Spacer, Differential   |
| 77    | 780003      |     | Bushing                |