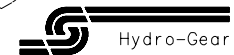
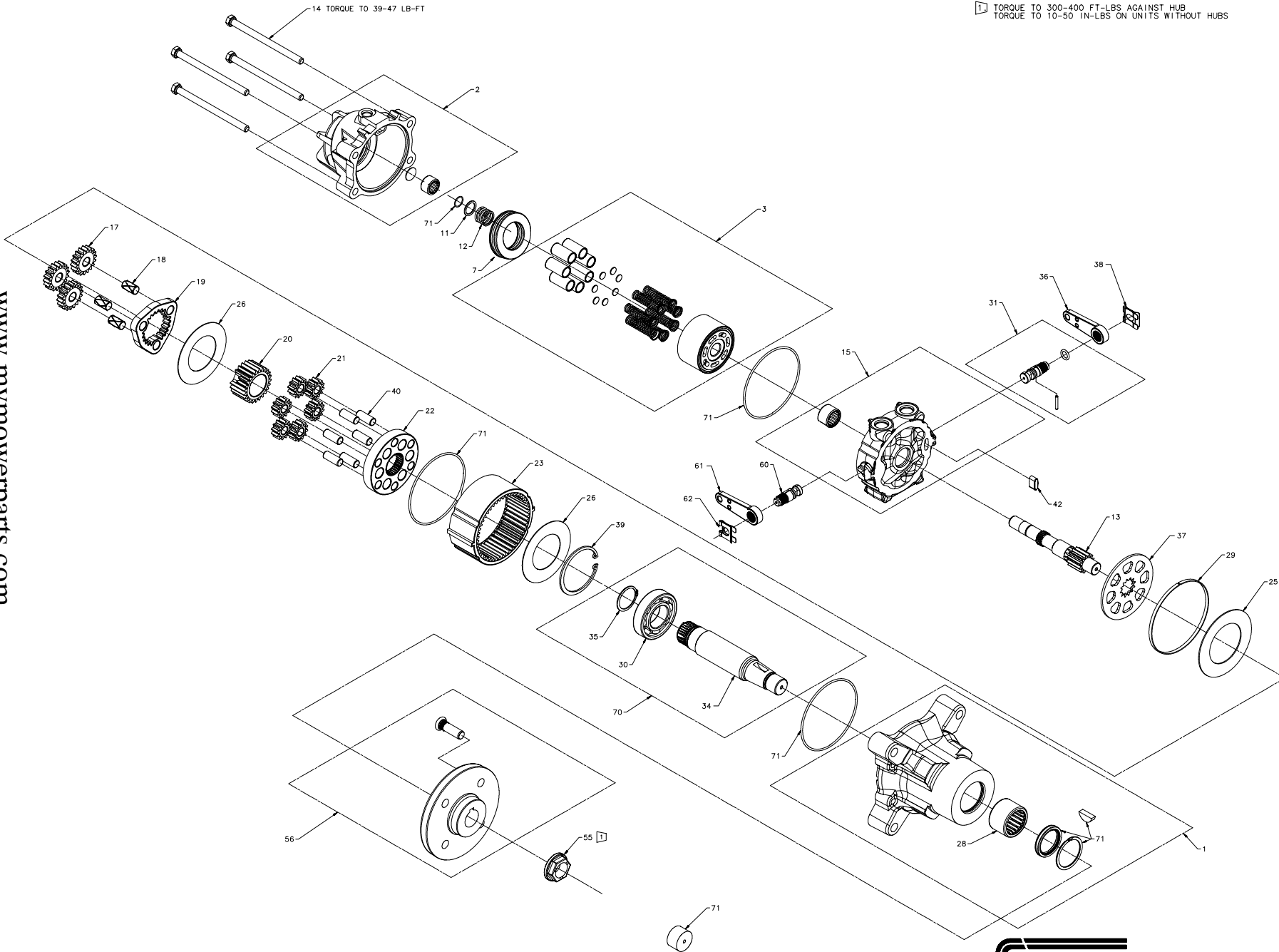


PRM SERVICE PARTS SCHEMATIC

NOTES

TORQUE TO 300-400 FT-LBS AGAINST HUB
 TORQUE TO 10-50 IN-LBS ON UNITS WITHOUT HUBS



PRM KIT CONFIGURATION GUIDE

MODEL CODE: M*-***X-***-XXXX

CHARACTER 10		*B* SIDE BRAKE ACTUATING ARM			
B SIDE BRAKE ARM	ITEM #	COMPONENT #	DESCRIPTION	QTY	
X	061	N/A	NONE	0	
1		51776	HANDLE, ACTUATING	1	
1 THRU 9	062	52027	CLIP, RETAINING	1	

CHARACTER 9		*B* SIDE PORT BLOCK & BRAKE CAM KITS			
B SIDE BRAKE ROTATION & POSITION	ITEM #	COMPONENT #	DESCRIPTION	QTY	
X	015	NONE	N/A	0	
		NONE	N/A	0	
A	015	71234	KIT, BLOCK, PORT *B* SIDE	1	
		060	71236	KIT, BRAKE CAM CCW	1
C	015	71234	KIT, BLOCK, PORT *B* SIDE	1	
		060	71236	KIT, BRAKE CAM CCW	1
E	015	71234	KIT, BLOCK, PORT *B* SIDE	1	
		060	71237	KIT, BRAKE CAM CW	1
G	015	71234	KIT, BLOCK, PORT *B* SIDE	1	
		060	71237	KIT, BRAKE CAM CW	1

CHARACTER 8		*A* SIDE BRAKE ACTUATING ARM			
A SIDE BRAKE ARM	ITEM #	COMPONENT #	DESCRIPTION	QTY	
X	036	N/A	NONE	0	
1		51776	HANDLE, ACTUATING	1	
1 THRU 9	038	52027	CLIP, RETAINING	1	

CHARACTER 7		*A* SIDE PORT BLOCK & BRAKE CAM KITS			
A SIDE BRAKE ROTATION & POSITION	ITEM #	COMPONENT #	DESCRIPTION	QTY	
X	015	NONE	N/A	0	
		NONE	N/A	0	
A	015	71235	KIT, BLOCK, PORT *A* SIDE	1	
		031	71236	KIT, BRAKE CAM CCW	1
C	015	71235	KIT, BLOCK, PORT *A* SIDE	1	
		031	71236	KIT, BRAKE CAM CCW	1
E	015	71235	KIT, BLOCK, PORT *A* SIDE	1	
		031	71237	KIT, BRAKE CAM CW	1
G	015	71235	KIT, BLOCK, PORT *A* SIDE	1	
		031	71237	KIT, BRAKE CAM CW	1

CHARACTER 5		HUB KITS			
AXLE END	ITEM #	COMPONENT #	DESCRIPTION	QTY	
A 1.25 TAPER	056	N/A	NONE	0	
B 4 BOLT HUB		71027	KIT, HUB 4 BOLT	1	
C 5 BOLT HUB		71028	KIT, HUB 5 BOLT	1	

CHARACTER 3&4		MOTOR HOUSING KITS			
DISPLACEMENT (IN/REV)	ITEM #	COMPONENT #	DESCRIPTION	QTY	
14	002	71230	KIT, HOUSING, MOTOR 10.66 DEGREE	1	
16		71231	KIT, HOUSING, MOTOR 12.14 DEGREE	1	
18		71232	KIT, HOUSING, MOTOR 13.61 DEGREE	1	
20		71233	KIT, HOUSING, MOTOR 15 DEGREE	1	

CHARACTER 2	
FRAME SIZE	
R	ø7.312 BOLT MOUNT

COMMON PARTS AND KITS				
ITEM	DESCRIPTION	PART #	QTY	
1	KIT, AXLE HOUSING	71239	1	
3	KIT, MOTOR BLOCK	70082	1	
7	BEARING, THRUST	50552	1	
11	WASHER, .701 X .906 X .047	2000024	1	
12	SPRING, BLOCK HEL COMP	2000025	1	
13	SHAFT, MOTOR	51784	1	
14	SCREW, HFHCS 3/8-16 X 5.5	51786	4	
17	GEAR, 18T PLANET	51777	3	
18	PIN, CARRIER .500 X .900	51788	3	
19	CARRIER, PLANETARY, PRIMARY	51808	1	
20	GEAR, 24T SUN	51778	1	
21	GEAR, 12T PLANET	51885	6	
22	CARRIER, PLANETARY, SECONDARY	51883	1	
23	GEAR, 48T RING	51789	1	
25	WASHER, STATOR 2.50 X 4.085 X .0598	51790	1	
26	WASHER, 2.187 X 3.800 X .038	51791	2	
28	BEARING, NEEDLE 1.500 X 1.875 X 1.250	51793	1	
29	SPACER, STATOR	51792	1	
30	BEARING, BALL 1.3780 X 2.8346 X .6693	51815	1	
34	SHAFT, AXLE	51938	1	
35	RING, RETAINING 1.375 EXTERNAL	51797	1	
37	ROTOR, BRAKE	51799	1	
39	RING, RETAINING 2.835 INTERNAL	51814	1	
40	PIN, CARRIER .455 X 1.150	51884	6	
42	PUCK, BRAKE	51775	1	
55	NUT, HEX TOP LOCK 1-20 UNEF-2B	51937	1	
70	KIT, AXLE SHAFT	71238	1	
71	KIT, SEAL	71240	1	

