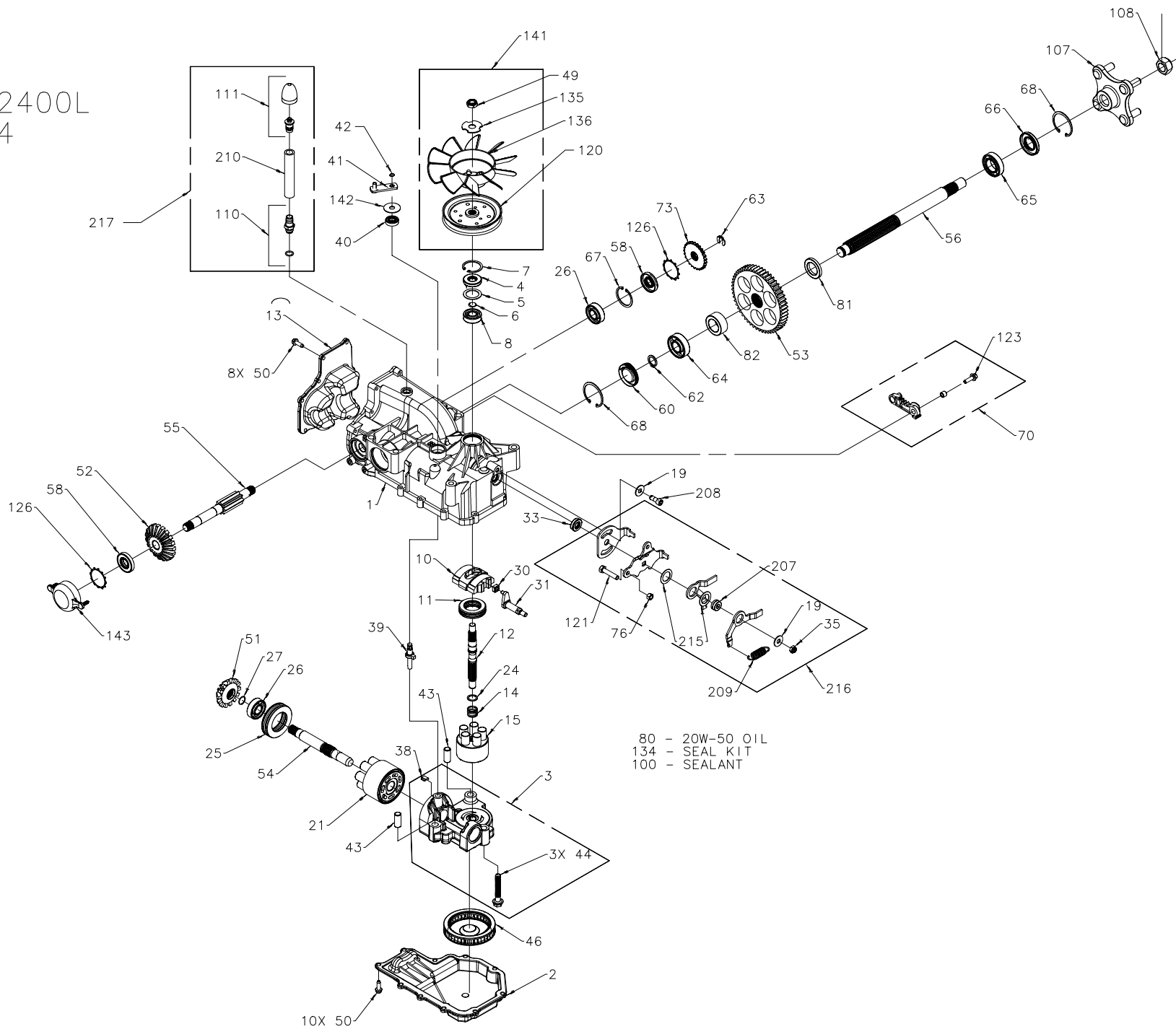
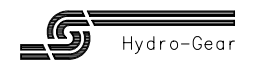


351-2400L
17304



- 80 - 20W-50 OIL
- 134 - SEAL KIT
- 100 - SEALANT



For Hydro-Gear Parts Call K&T 606-678-9623 or 606-561-4983

www.mymowerparts.com

351-2400L
17304

ITEM #	PART #	QTY	DESCRIPTION
1	70652	1	KIT, HOUSING-MAIN
		1	HOUSING, MAIN
		2	BEARING, CRADLE
		1	SEAL, LIP 12 X 25 X 7
		1	BUSHING, TRUNNION
		1	SHAFT, BRAKE
		1	SCREW, HFHC 1/4-28 X 7/8 (PATCH)
		1	WASHER .34 X .88 X .03
2	50890RM	1	HOUSING, LOWER
3	70667	1	KIT, CENTER SECTION
		1	CENTER SECTION
		1	BUSHING .67 X 1.03 X .75
		1	PLATE, BYPASS
		3	SCREW 3/8-24 X 2.5
		2	CHECK PLUG ASSEMBLY, .027
		1	SEAL, LIP
4	9008000-0128	1	SPACER
5	2003018	1	RING, WIRE RETAINING
6	2003016	1	RING, RETAINING
7	2003052	1	RING, RETAINING
8	2003043	1	BEARING, BALL
10	2003087	1	VARIABLE SWASHPLATE
11	50551	1	BEARING, THRUST 30 X 52 X 13
12	50005	1	SHAFT, INPUT
13	50891RM	1	COVER-BACK
14	2003014	1	SPRING, BLOCK
15	70331	1	CYLINDER BLOCK ASS'Y, 10cc
		1	CYLINDER BLOCK, 10cc
		5	PISTON SPRING, 10cc
		5	WASHER, PISTON SEAT
		5	PISTON, 10cc
19	44130	2	WASHER
21	70082	1	CYLINDER BLOCK ASS'Y, 21cc
		1	CYLINDER BLOCK, 21cc
		7	PISTON SPRING, 21cc
		7	PISTON SEAT WASHER
		7	PISTON, 21cc
24	2003017	1	WASHER, BLOCK THRUST
25	50552	1	BEARING, THRUST 42 X 68 X 16
26	50315	2	BEARING, BALL
27	2000022	1	RING, WIRE RETAINING
30	2000015	1	GUIDE, SLOT
31	50807	1	ARM, TRUNNION
33	9008000-0126	1	SEAL, LIP
35	50317	1	NUT
38	70680	1	KIT, BYPASS PLATE
39	2003555	1	ACTUATOR, BYPASS
40	45074	1	SEAL, LIP
41	50126	1	ARM, BYPASS
42	44870	1	RING, RETAINING
43	50002	2	PIN
44	50016	3	SCREW
46	50990	1	FILTER
49	51244	1	NUT, HEX 1/2-20
50	50752	18	SCREW, 1/4-20 X .75 LONG
51	50744	1	GEAR, 14T BEVEL
52	50745	1	GEAR, 19T BEVEL
53	50746	1	GEAR, 53T SPUR
54	50757	1	SHAFT, MOTOR
55	51335	1	SHAFT, BRAKE
56	50748	1	SHAFT, AXLE
58	51161	2	SEAL, LIP 17 X 40 X 7
60	50995	1	SEAL, PLUG - SIDE
62	50759	1	RING, RETAINING - AXLE
63	51109	1	RETAINING RING .440 EXTERNAL
64	50743	1	BEARING, BALL 20X47X14(6204)
65	50740	1	BEARING, BALL 25X47X12(6005)
66	50751	1	SEAL
67	50329	1	RING, RETAINING
68	50760	2	RING, RETAINING-AXLE

ITEM #	PART #	QTY	DESCRIPTION
70	71088	1	ARM, BRAKE ASSEMBLY (RH)
		1	ARM, BRAKE
		1	CLEVIS PIN
		1	BUSHING .255 X .394 X .330
		1	SCREW, 1/4-28
73	50754	1	COG, BRAKE
76	43083	1	NUT, HEX, 5/16-18 UNC
80		79oz	20W-50 OIL
81	51939	1	SPACER, AXLE 1.04 X 1.65 X .22
82	51940	1	SPACER, AXLE 1.04 X 1.65 X .70
99	9005200-5600	1	PLUG, PLASTIC
100	50928	1	SEALANT
107	70314	1	HUB ASSEMBLY
		1	HUB
		4	LUG BOLT
108	50863	1	NUT, HEX 3/4-16
110	70110	1	FITTING, O-RING ASSEMBLY
		1	PLASTIC HOSE FITTING
		1	O-RING
111	70921	1	CAP VENT ASSEMBLY
		1	PLASTIC VENT
		1	CAP, POPPET VALVE
120	51182	1	PULLEY, 4.5"
121	51753	1	BOLT, 5/16-18 X 1.5 UNC-2A
123	51576	1	SCREW, HFCS 1/4-28
126	51316	2	RING, RETAINING
134	70553	1	KIT, SEAL
		1	SEAL, LIP 15 X 35 X 7
		1	RING, RETAINING
		1	SEAL, LIP 12 X 25 X 7
		1	SEAL, LIP 10 X 25 X 7
		1	RING, RETAINING
		18	HFCS 1/4-20 X .75 ZINC
		1	SEAL, PLUG (1.86)
		1	RING, RETAINING
		1	RING, RETAINING .440 EXTERNAL
		1	SEAL, LIP 25 X 47 X 7
		1	RING, RETAINING
		2	RING, RETAINING
		2	RING, RETAINING
135	51523	1	WASHER, OD SLOTTED .53 X 1.63 X .06
136	51862	1	FAN, 7", 10 BLADE
141	71086	1	KIT, FAN/PULLEY
		1	FAN, 7", 10 BLADE
		1	PULLEY 4.5"
		1	WASHER, OD SLOTTED .53 X 1.63 X .06
		1	NUT, HEX LOCK 1/2-20 (NYLON INSERT)
		1	WASHER .39 X 1.25 X .04
142	51813	1	BRAKE COVER, PLASTIC
143	51774	1	SPACER, RTN
207	51604	1	SCREW, 5/16-24 X .75 (PATCH)
208	51400	1	SPRING, EXTENSION
209	51399	1	HOSE, φ.5 X 4.00
210	51401	1	WASHER, NYLON
215	51408	1	KIT, RTN
216	70609	1	WASHER
		1	NUT, HEX LOCK 5/16-24 UNJF (NYLON INSERT)
		1	SPACER, RTN
		1	SCREW, 5/16-24 X .75 (PATCH)
		1	SPRING, EXTENSION
		1	WASHER, NYLON
		1	ARM, CONTROL
		1	ARM, RTN SCISSOR, OUTER
		1	ARM, RTN SCISSOR, INNER
		1	ARM, RETURN
217	71004	1	KIT, BREATHER ASSEMBLY
		1	FITTING, O-RING ASSEMBLY
		1	CAP, VENT ASSEMBLY
		1	HOSE, .5 X 4.00

www.mymowerparts.com

For Hydro-Gear Parts Call K&T 606-678-9623 or 606-561-4983

