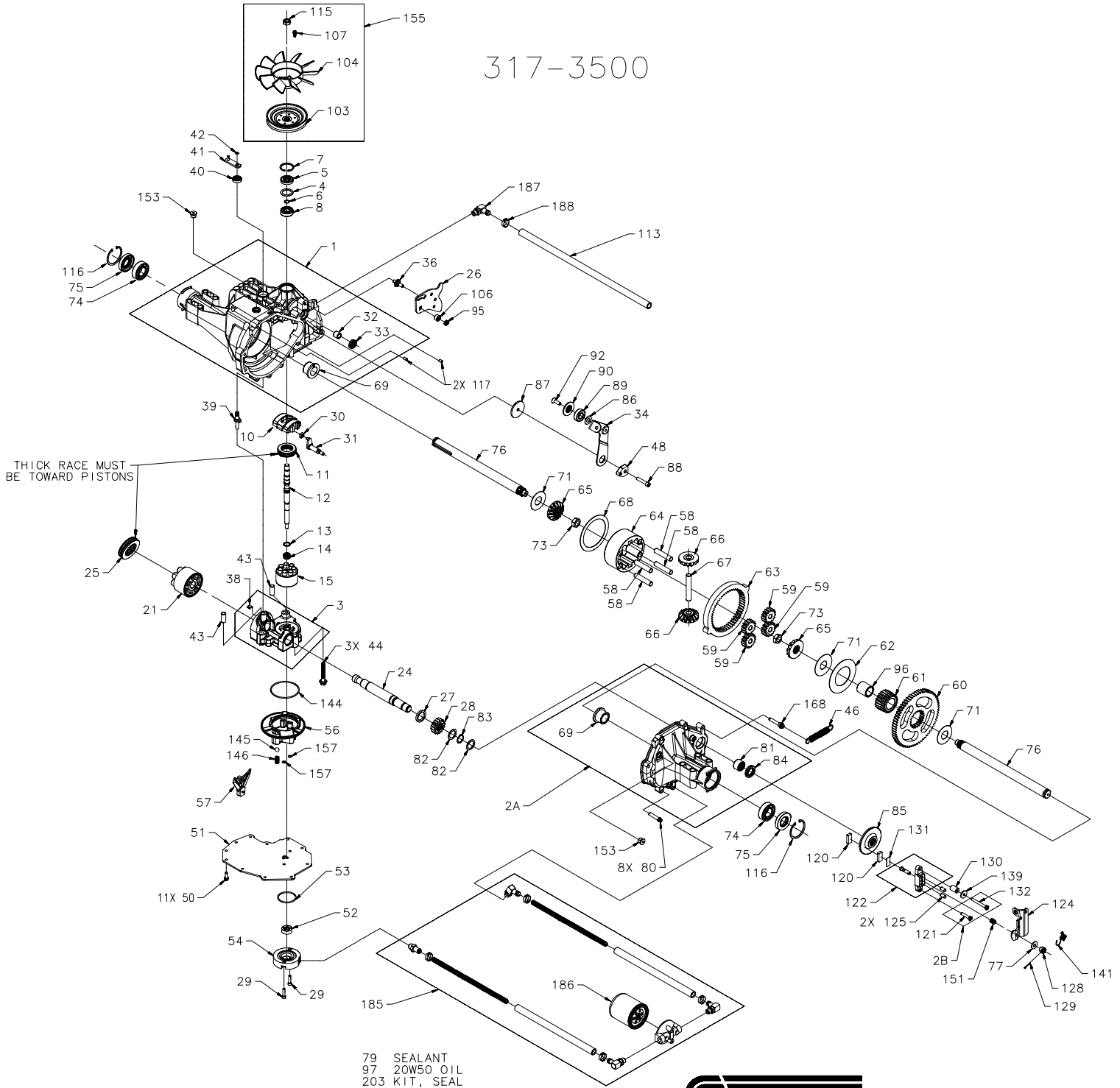
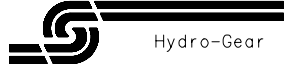


317-3500



79 SEALANT
97 20W50 OIL
203 KIT, SEAL



317-3500

ITEM #	PART #	QTY	DESCRIPTION	ITEM #	PART #	QTY	DESCRIPTION	ITEM #	PART #	QTY	DESCRIPTION
1	70433	1	HOUSING, MAIN ASSEMBLY	34	51127	1	ARM, RETURN	107	50851	3	HFHCS-STAP 12-
		1	HOUSING, MAIN	36	50426	1	STUD 5/16-24	113	50838	1	HOSE 1/2" x 20
		1	SEAL, LIP 12x25x7	38	70680	1	KIT, BYPASS PLATE	115	44133	1	NUT, HEX 1/2-2
		1	BEARING, FLANGE	39	2003555	1	ACTUATOR, BYPASS	116	50859	2	RING, RETAININ
		1	BUSHING, TRUNNION	40	45074	1	SEAL, LIP 10X25X7	117	9004800-2506	2	PIN, STD HDLS
		2	BEARING, CRADLE	41	50270	1	ARM, BYPASS 1/4-20 STUD	120	44132	2	PUCK, BRAKE
2A	71270	1	HOUSING, R.H. ASSEMBLY	42	44870	1	RING, RETAINING	121	51927	1	BOLT, HEX HD 1
		1	HOUSING, R.H.	43	50002	2	PIN	122	70633	1	YOKE, BRAKE AS
		1	BEARING, FLANGE	44	50016	3	SCREW 3/8-24X2.5	124	50911	1	ARM, BRAKE
		1	BEARING, NEEDLE .875X1.125X.75	46	51199	1	SPRING, RETURN	125	44127	2	PIN, BRAKE
		1	SEAL, LIP .875X1.3X.25	48	51097	1	PUCK, ADJUSTING	128	44142	1	NUT, CASTLE
2B	71139	1	KIT, BRAKE BOLT	50	50752	11	SCREW, 1/4-20 X .75	129	44101	1	PIN, COTTER
		1	BOLT, HEX HD 1/4-20 X 1.25 W/PATCH	51	52206	1	COVER, LOWER	130	23711	1	SPACER
		1	BOLT, HEX HD 1/4-20 X 2.25 W/PATCH	52	50273	1	GEROTOR	131	44134	1	PLATE, PUCK
3	71272	1	KIT, CENTER SECTION	53	9004100-1430	1	O-RING .103 X 1.862	132	51928	1	BOLT, HEX HD 1
		1	CENTER SECTION (7 PISTON 10cc)	54	52205	1	COVER, CHARGE EXTERNAL	139	44278	1	WASHER, .27X.8
		1	BUSHING .50X.60X.50	56	51156	1	MANIFOLD, CHARGE	141	50884	1	SPRING, BRAKE
		1	BUSHING .90X1.02X.75	57	50796	1	RETAINER, MOTOR BEARING	144	50974	1	O-RING, .103X2
		1	PLATE, BYPASS	58	50776	4	PIN, CARRIER	145	51157	1	SPRING, RELIEF
		2	CHECK PLUG ASSEMBLY, .027, SPRING	59	50763	4	GEAR, 15T PLANET	146	9001214-4400	1	BALL, 7/16
4	2003018	1	SPACER	60	50646	1	GEAR, 67T SPUR	151	50919	1	SPRING, COMP.
5	9008000-0128	1	SEAL, LIP 15X35X7	61	50645	1	GEAR, 21 TOOTH SUN	153	9005110-5600	2	PLUG, STRAIGHT
6	2003016	1	RING, WIRE RETAINING	62	50769	1	PLATE, PLANET THRUST	155	70489	1	KIT, FAN/PULLE
7	2003052	1	RING, RETAINING	63	50764	1	GEAR, 51T RING			1	PULLEY
8	2003043	1	BEARING, BALL	64	50765	1	CARRIER, PLANETARY			1	FAN, 7.0 (10 B
10	2003087	1	SWASHPLATE, VARIABLE	65	51411	2	GEAR, BEVEL DIFF. (SPLINED)			3	HFHCS SCREW 12
11	50551	1	BEARING, THRUST 30X52X13	66	51410	2	GEAR, BEVEL DIFF. (CROSS SHAFT)			1	NUT, HEX 1/2-2
12	50795	1	SHAFT, INPUT	67	50766	1	SHAFT, DIFFERENTIAL	157	50977	2	O-RING, .07 X
13	2003017	1	WASHER, BLOCK THRUST	68	50767	1	PLATE, THRUST DIFF.	168	51151	1	SCREW, SHLDR T
14	2003014	1	SPRING, BLOCK	69	50768	2	BEARING, FLANGE	185	71271	1	KIT, FILTER AS
15	70723	1	BLOCK, ASSEMBLY 7 PISTON 10cc	71	50788	3	WASHER 1.0X2.25X.04			1	BASE, FILTER
		1	BLOCK, CYLINDER 7 PISTON 10cc	73	50791	2	NUT, HEX JAM 5/8-18			1	FILTER
		7	PISTON	74	50771	2	BEARING, BALL 25.4X52X15			2	FITTING, 90° 9.
		7	SPRING, PISTON	75	50772	2	SEAL 1X2.049X.375			4	CLAMP, PINCH
		7	WASHER, THRUST	76	50663	2	SHAFT, AXLE			1	FITTING, STRAI
21	70082	1	BLOCK, 21cc CYLINDER ASSEMBLY	77	44130	1	WASHER .34X.88X.06			1	FITTING, 60° 9.
		1	BLOCK, 21cc CYLINDER	79	50928	1	SEALANT			2	HOSE, 1/2 X 12
		7	WASHER, PISTON SEAT	80	50868	8	SCREW, TORX HEAD 5/16-18X1.5			2	SPRING, HEL. C
		7	PISTON, 21cc	81	44752	1	BEARING, NEEDLE .875X1.125X.75	186	51563	2	FILTER
		7	SPRING, 21cc PISTON	82	50777	2	WASHER .88X1.25X.04	187	50589	1	FITTING, 90° 9.
24	50662	1	SHAFT, MOTOR	83	50775	1	RING, RETAINING	188	50590	1	CLAMP, PINCH
25	50552	1	BEARING, THRUST 42X68X16	84	50773	1	SEAL, LIP .875X1.3X.25	203	70492	1	KIT, SEAL
26	51692	1	ARM, CONTROL	85	50779	1	DISK, BRAKE			1	SEAL, LIP 15X3
27	50774	1	SPACER	86	50132	1	WASHER .5X1.0X.03			1	SEAL, LIP 12X2
28	50661	1	GEAR, 16T PINION	87	50836	1	WASHER .32X2.0X.14			1	SEAL, LIP 10X2
29	50975	2	HFCS, M6 X 1 X 25	88	50837	1	SCREW, 5/16-24X1-1/2			2	O-RING .103X2.
30	2000015	1	GUIDE, SLOT	89	44147	1	BEARING .625X1.375X.433			2	SEAL, LIP 1.00
31	50807	1	ARM, TRUNNION	90	51200	1	SPACER, LOCATING			1	SEAL, LIP .875
32	2003009	1	BUSHING, TRUNNION	92	50870	1	SCREW, COUNTERSUNK 5/16-18X1			2	O-RING, .070X.
33	9008000-0126	1	SEAL, LIP 12X25X7	95	50108	1	NUT, HEX LOCK 5/16-24			1	KIT, O-RING, M
				96	50866	1	BEARING, SLEEVE 1.0X1.31X1.34			1	SHIM, CHARGE P
				97		147oz	OIL-20W50				
				103	51242	1	PULLEY				
				104	51862	1	FAN, 7.0 (10 BLADE)				
				106	50850	1	SPACER, TRUNNION				

