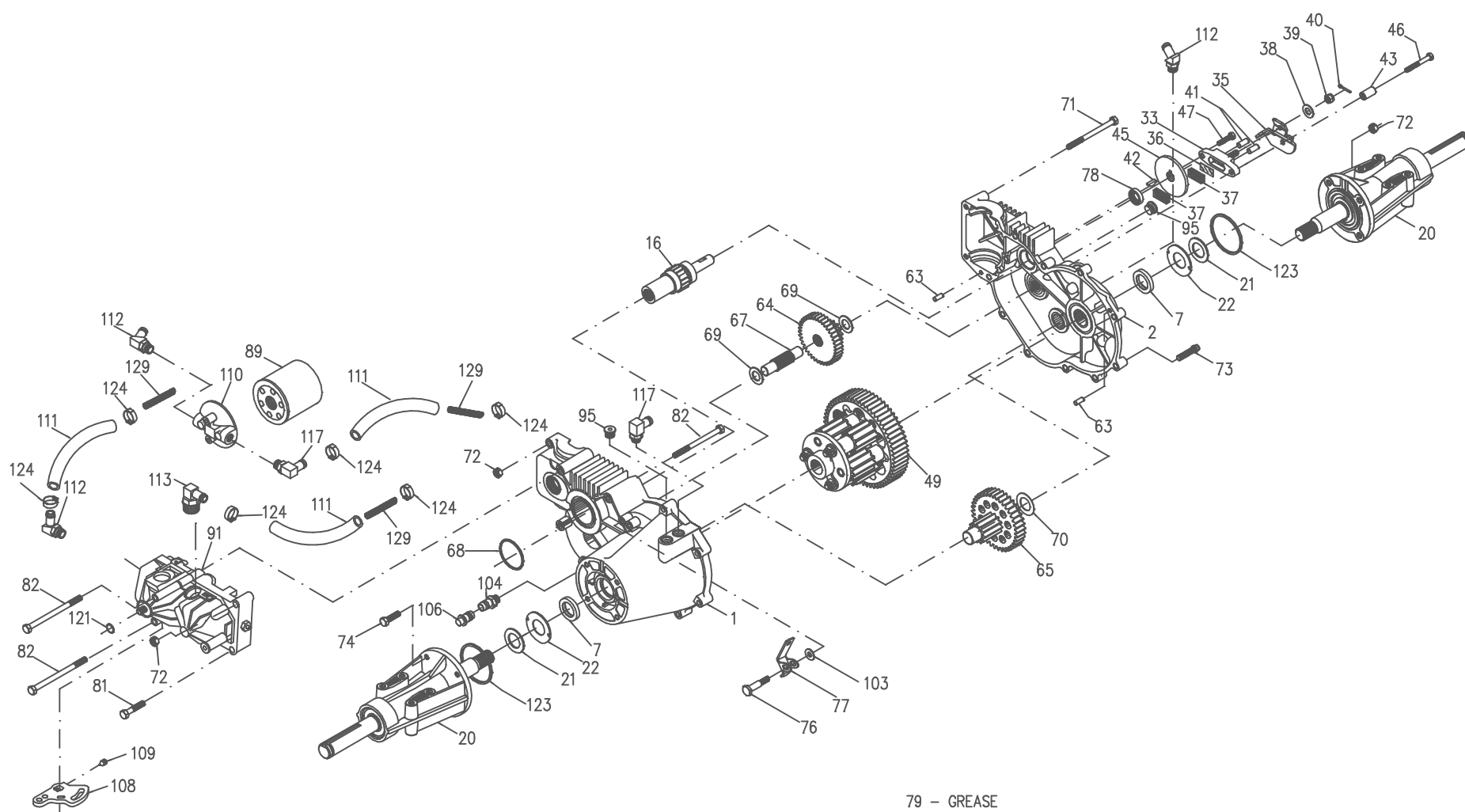


150073
218-3010L



79 - GREASE
80 - SEALANT
90 - 20W-50 OIL
102 - SEAL KIT



P.1 of 2. 70235-S7

150073
218-3010L

ITEM NO.	HYDRO-GEAR PART NO.	QTY	DESCRIPTION
1	70086	1	ASSEMBLY, L H HOUSING
		1	L H HOUSING
		1	DISC, THRUST 1-1/8 OD
		1	BEARING, NEEDLE SCE1412
		1	BEARING, BALL 25MM X 52MM
		1	BEARING, NEEDLE - SCH 1012
		1	SEAL, OIL .984 X 1.5 X .25
2	70088	1	ASSEMBLY, R H HOUSING
		1	HOUSING, R H TRANSAXLE
		1	BOLT, RIB NECK 5/16-18
		1	WASHER, RUBBER 5/8 OD X .313 ID X .04
		1	BEARING, NEEDLE SCE1412
		1	BEARING, BALL 25MM X 52MM
		1	BEARING, NEEDLE - SCH 1012
		1	SEAL, OIL .984 X 1.5 X .25
7	44782	2	OIL SEAL .984 X 1.5 X .25
16	62877	1	BRAKE SHAFT ASSEMBLY
		1	SHAFT, BRAKE
		2	BEARING, BALL .62 X 1.38 X .43
		1	GEAR, 17T
		1	COUPLING
20	70087	2	AXLE MOUNTING HORN ASSEMBLY
		1	AXLE MOUNTING HORN
		1	BEARING, 25MM ID (W/ SEALS)
		1	WASHER, 1.0 X 1.63 X .08 HT
		1	WASHER, 1.0 X 2.06 X .09 HT
		1	SHAFT, AXLE
		1	RING, RETAINING
21	44805	2	WASHER, 1.0 X 1.63 X .08 HT
22	44806	2	WASHER, 1.0 X 2.06 X .09 HT
33	62589	1	BRAKE YOKE ASSEMBLY
		1	YOKE, BRAKE
		1	BOLT, SQ HD 5/16-24
35	50214	1	ARM, BRAKE
36	44134	1	PLATE, PUCK
37	44132	2	PUCK, BRAKE
38	44130	1	WASHER, 7/8OD X 7/16 X .060 HT
39	44142	1	NUT, SLOTTED HEX
40	44101	1	PIN, COTTER
41	44127	2	PIN, BRAKE ACTUATING
42	44143	1	KEY, HI-PRO 3/16 X 5/8
43	50259	1	SPACER
45	44090	1	DISC, BRAKE
46	44276	1	BOLT, 1/4-20 X 1-1/2
47	44433	1	BOLT, 1/4-20 X 1 W/NYLOK GR5

ITEM NO.	HYDRO-GEAR PART NO.	QTY	DESCRIPTION
49	70251	1	DIFFERENTIAL ASSEMBLY
		2	GEAR, 12T DIFFERENTIAL
		6	GEAR, 10T PLANET DIFFERENTIAL
		6	SPACER, DIFFERENTIAL
		3	SPACER, SHAFT
		1	DIFFERENTIAL END CAP
		3	BOLT, 3/8-24 X 4.5 GDB
		3	NUT, HEX LOCK 3/8-24 GDB
		3	SHAFT, DIFFERENTIAL
		1	GEAR, 60T DIFFERENTIAL
63	44757	2	PIN, DOWEL
64	44776	1	GEAR, REDUCTION 14T-38T
65	70051	1	FINAL DRIVE PINION ASSEMBLY
		1	GEAR 38T
		1	GEAR 12T
67	44779	1	SHAFT, JACK
68	44781	1	O-RING
69	44795	2	WASHER, FL 5/8ID X 1-1/4 X .05
70	44794	1	WASHER, FL 7/8ID X 1-1/2OD HT
71	44827	2	BOLT, HEX HD 5/16-18 X 3-1/2
72	43083	4	HEX NUT 5/16-18
73	50868	11	TORX HEAD SCREW, 5/16-18
74	45089	7	CAP SCREW, HEX 5/16-18 X 1 GR5
76	44785	1	BOLT, SHOULDER
77	44786	1	ARM, FREEWHEEL ACTUATING
78	44761	1	SEAL, OIL .625 X 1.0 X .25
79	50416	1	GREASE (10 OZ. TUBE)
80	50928	1	SEALANT
81	43084	1	BOLT, HEX 5/16-18 X 1-3/4 GR 5
82	44820	3	BOLT, 5/16-18 X 4-1/2 GR 5
89	50037	1	SPIN-ON FILTER
90		99.8oz	20W-50 OIL
91	BDU-10L-122	1	BDU-10L-122
95	9005110-5600	2	PLUG, STRAIGHT THREAD
102	70052	1	SEAL KIT
103	50169	1	WASHER
104	70109	1	CAP VENT ASSEMBLY
		1	VENT
		1	CAP
106	70110	1	FITTING-O RING ASSEMBLY
		1	O-RING
		1	FITTING
108	45007	1	CONTROL ARM
109	50018	1	SET SCREW
110	50207	1	FILTER HEAD
111	50632	3	1/2" HOSE, 12" LONG
112	50604	3	1/2" BEADED 60° 9/16 SAE FITTING
113	50592	1	1/2" BEADED 90° 7/8 SAE FITTING
117	50589	2	1/2" BEADED 90° 9/16 SAE FITTING
121	2003016	1	WIRE RETAINING RING
123	50405	2	O RING
124	50590	6	PINCH CLAMP
129	50667	3	SPRING, LONG



P.2 of 2. 70235-S7