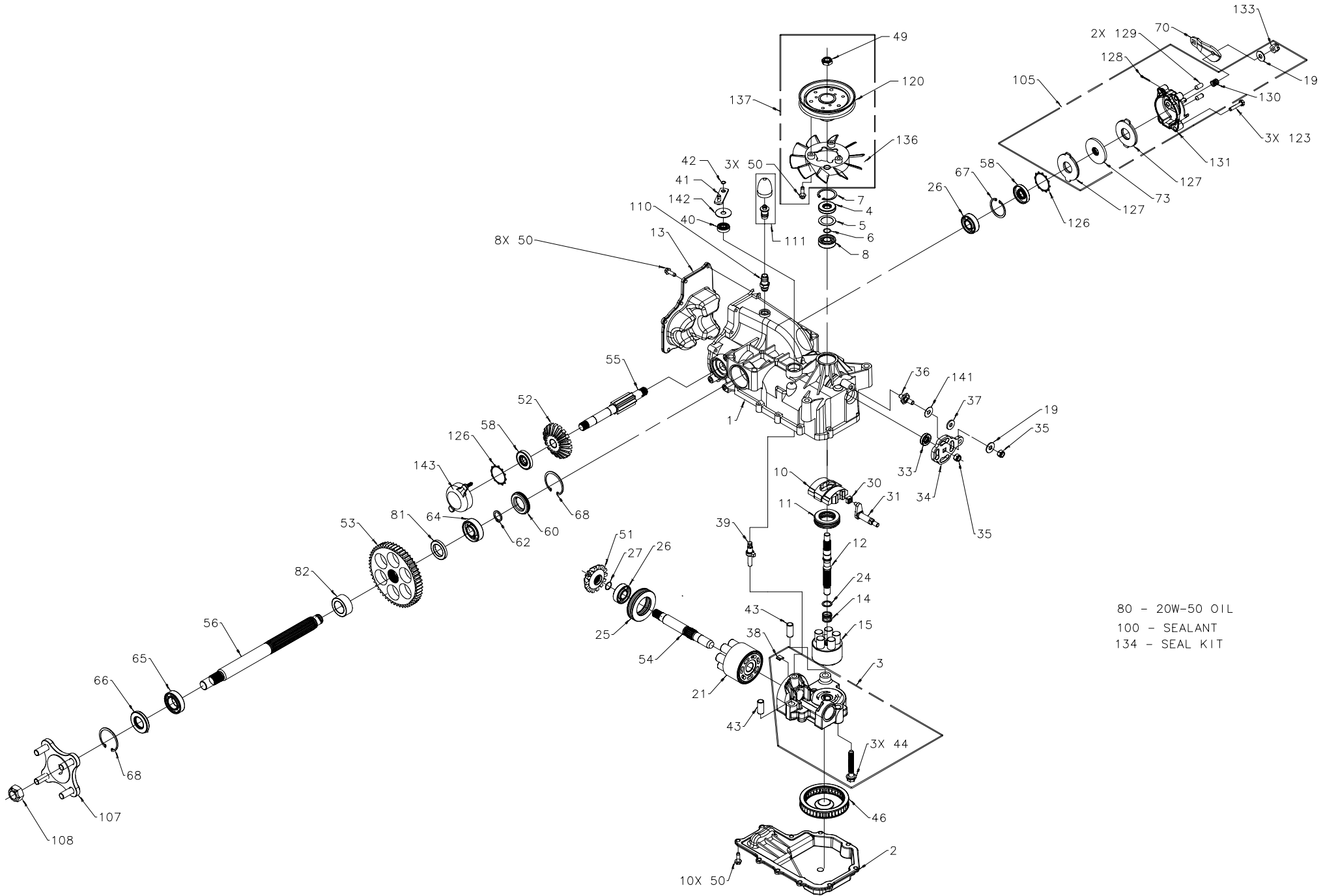


130333  
327-2400R

For Hydro-Gear Parts Call K&T 606-678-9623 or 606-561-4983



80 - 20W-50 OIL  
100 - SEALANT  
134 - SEAL KIT

www.mymowerparts.com

130333  
327-2400R

ITEM #	PART #	QTY	DESCRIPTION
1	70652	1	KIT, HOUSING-MAIN
		1	HOUSING, MAIN
		2	CRADLE BEARING
		1	LIP SEAL
		1	TRUNNION BUSHING
		1	HOUSING, MAIN RM
		1	SHAFT, BRAKE
		1	SCREW, HFHC 1/4-28 X 7/8 (PATCH)
		1	WASHER, .34 X .88 X .03
2	50890RM	1	LOWER HOUSING
3	70678	1	KIT, CENTER SECTION
		1	CENTER SECTION
		1	BUSHING .67 X 1.03 X .75
		1	PLATE, BYPASS
		3	SCREW 3/8-24 X 2.5
		1	CHECK PLUG ASSEMBLY, .027
		1	CHECK PLUG ASSEMBLY, .044
		1	LIP SEAL
4	9008000-0128	1	SPACER
5	2003018	1	WIRE RETAINING RING
6	2003016	1	RETAINING RING
7	2003052	1	BALL BEARING
8	2003043	1	VARIABLE SWASHPLATE
9	2003087	1	THRUST BEARING 30 X 52 X 13
10	50551	1	INPUT SHAFT
11	50005	1	COVER-BACK
12	50891RM	1	SPRING, BLOCK
13	2003014	1	10cc CYLINDER BLOCK ASS'Y
14	70331	1	10cc CYLINDER BLOCK
		5	10cc PISTON SPRING
		5	PISTON SEAT WASHER
		5	10cc PISTON
15	44130	2	WASHER
16	70082	1	21cc CYLINDER BLOCK ASS'Y
		1	21cc CYLINDER BLOCK
		7	21cc PISTON SPRING
		7	PISTON SEAT WASHER
		7	21cc PISTON
		1	WASHER, BLOCK THRUST
17	2003017	1	THRUST BEARING 42 X 68 X 16
18	50552	1	WIRE RETAINING RING
19	50315	2	SLOT GUIDE
20	2000022	1	TRUNNION ARM
21	2000015	1	LIP SEAL
22	50807	1	CONTROL ARM
23	9008000-0126	1	NUT
24	50749	1	STUD - SHORT 5/16-24
25	50317	2	FRICION PUCK
26	50426	1	KIT, BYPASS PLATE
27	50281	1	BYPASS ACTUATOR
28	70680	1	LIP SEAL
29	2003555	1	BYPASS ARM
30	45074	1	RETAINING RING
31	50270	1	PIN
32	44870	2	SCREW
33	50002	1	FILTER
34	50016	3	HEX LOCK NUT 1/2-20 (NYLON INSERT)
35	50990	1	SCREW, 1/4-20 X .75 LONG
36	50990	1	14T BEVEL GEAR
37	51244	1	19T BEVEL GEAR
38	50752	21	53T SPUR GEAR
39	50744	1	MOTOR SHAFT
40	50745	1	BRAKE SHAFT
41	50746	1	AXLE SHAFT
42	50757	1	SEAL, LIP 17 X 40 X 7
43	51335	1	
44	50748	1	
45	51161	2	

ITEM #	PART #	QTY	DESCRIPTION
60	50995	1	SEAL PLUG - SIDE
62	50759	1	RETAINING RING - AXLE
64	50743	1	BEARING-BALL 20X47X14(6204)
65	50740	1	BEARING-BALL 25X47X12(6005)
66	50751	1	SEAL
67	50329	1	RETAINING RING
68	50760	2	RETAINING RING-AXLE
70	51349	1	ARM, BRAKE
73	44855	1	ROTOR, BRAKE
80		79oz	20W-50 OIL
81	51939	1	WASHER, AXLE 1.04 X 1.65 X .22
82	51940	1	WASHER, AXLE 1.04 X 1.65 X .70
100	50928	1	SEALANT
105	70561	1	KIT, BRAKE
		1	WASHER
		1	ROTOR, BRAKE
		2	STATOR, BRAKE FRICTION
		1	COTTER PIN 3/32 X 3/4
		2	BRAKE ACTUATING PIN
		1	COMPRESSION SPRING ANTI DRAG
		1	KIT, YOKE-BRAKE
		1	SLOTTED HEX NUT 5/16-24
107	70314	1	HUB ASSEMBLY
		1	HUB
		4	LUG BOLT
108	50863	1	NUT, HEX 3/4-16
110	70110	1	FITTING O-RING ASSEMBLY
		1	PLASTIC HOSE FITTING
		1	O-RING
111	70921	1	CAP VENT ASSEMBLY
		1	VENT, PLASTIC
		1	CAP, PLASTIC
		1	PULLEY, 4.5
123	51341	3	SCREW, 1/4-28 X 1.25 W/PATCH
126	51316	2	RING, RETAINING
127	51340	2	STATOR, BRAKE FRICTION
128	44101	1	COTTER PIN 3/32 X 3/4
129	44127	2	BRAKE ACTUATING PIN
130	50919	1	COMPRESSION SPRING BRAKE ANTI DRAG
131	70560	1	KIT, YOKE-BRAKE
		1	SQ HD BOLT 5/16-24 RIBBED
		1	YOKE, BRAKE
133	44142	1	SLOTTED HEX NUT 5/16-24
134	70553	1	KIT, SEAL
		1	SEAL, LIP 15 X 35 X 7
		1	RING, RETAINING
		1	SEAL, LIP 12 X 25 X 7
		1	SEAL, LIP 10 X 25 X 7
		1	RING, RETAINING
		1	SEAL, LIP 25 X 47 X 7
		1	SEAL PLUG (1.86)
		1	RING, RETAINING
		1	RING, RETAINING .440 EXTERNAL
		18	HFHCS 1/4-20 X .75 ZINC
		1	RING, RETAINING
		2	RING, RETAINING
		2	RING, RETAINING
136	51365	1	FAN, 6", 10 BLADE
		1	KIT, FAN-PULLEY
		3	SCREW, 1/4-20 X .75 LONG
		1	FAN, 6", 10 BLADE
		1	HEX LOCK NUT 1/2-20 (NYLON INSERT)
		1	PULLEY, 4.5
141	51575	1	WASHER, .34 X .88 X .03

ITEM #	PART #	QTY	DESCRIPTION
142	51813	1	WASHER, BYPASS
143	51774	1	CAP, BRAKE

