

English 1 (2)

SB, 371, 365, 362, Crankcase, brake arm, cover plate, 1999-06

In order to further improve the performance and working life of the chain brake the brake arm, crankcase and hand guard have all been reinforced. This has led to the following parts changes.

Model 371, 365

When replacing the brake arm on the crankcase (503 62 68-73 or earlier reference number) brake arm 503 83 51-03 must be used.

When replacing the brake arm on later type crankcases (503 62 68-74) brake arm 537 00 87-01 must be used.

Model 362

When replacing the brake arm on the crankcase (503 63 79-72 or earlier reference number) brake arm 503 83 51-03 must be used.

When replacing the brake arm on later type crankcases (503 63 79-74) brake arm 537 00 87-01 must be used.

Hand guard

A new, reinforced hand guard replaces the earlier version. Both parts are fully interchangeable.

Cover plate

A modified version replaces the earlier version. Both parts are fully interchangeable.

New ref. no.	Description	Excl. ref. no.	Remarks
503 62 68-74	Crankcase	503 62 68-73	371,365
503 63 79-74	Crankcase	503 63 79-72	362
503 76 49-02	Hand guard	503 76 49-01	
537 00 87-01	Brake arm		
503 75 11-03	Cover	503 75 11-01	
	Brake arm	503 83 51-03	still available as spare part for older version

Introduced from serial no.	371	991700001
	365	991700001
	362	991700001



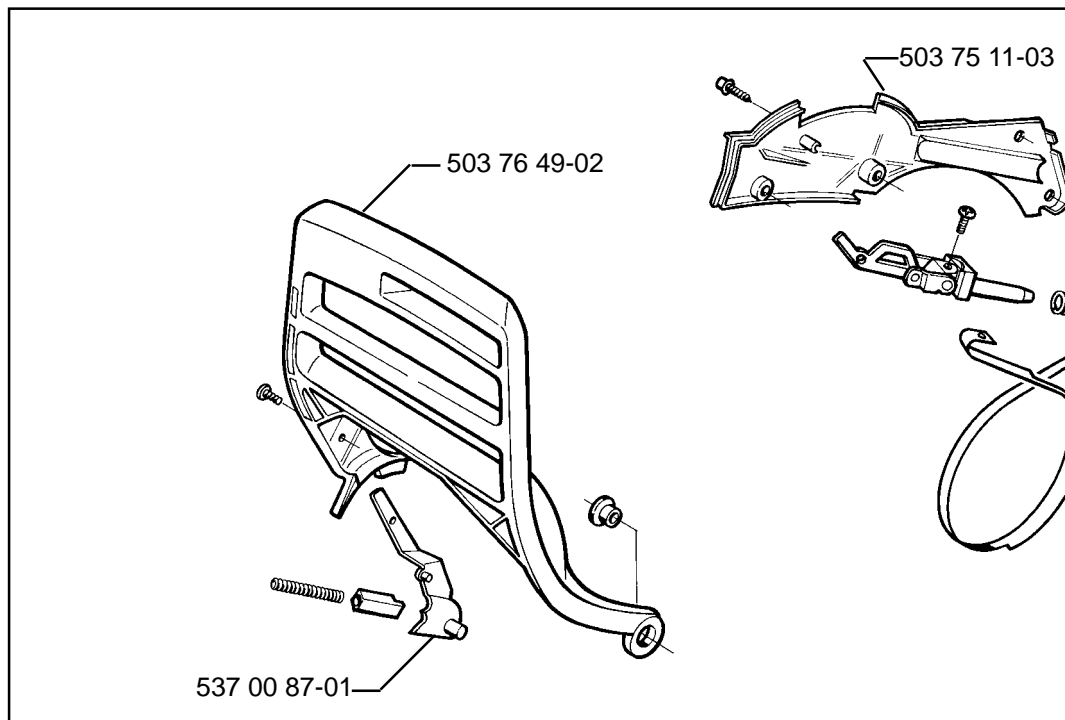
SERVICE



1

B9900023

2 (2)



*compl 503 62 68-74 - 371

*compl 503 63 79-74 - 362

