

TECHNICAL UPDATING OF THE MODEL 165 RX

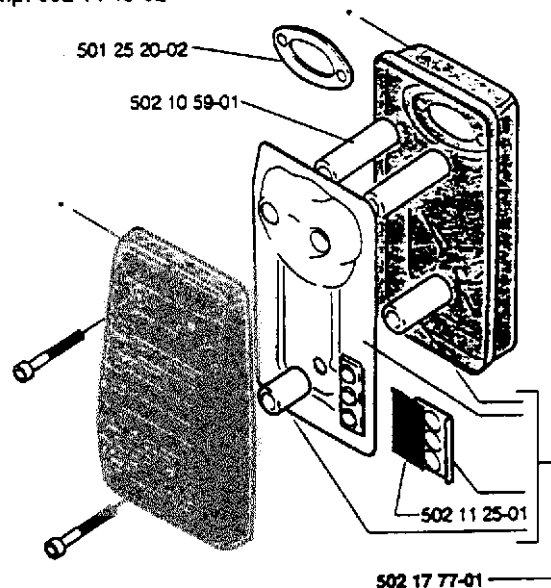
Silencer SA (Spark arrestor)

A new version of heat shield and sleeves are introduced. This is done in order to receive a more stable fitting of the heat shield thereby eliminating risks of cracks in the shield where the attachment of the spark arrestor screen is placed.

New Ref. No.	Description	Excluded Ref. No.
502 15 49-02	Silencer SA	502 15 49-01
502 17 77-01	Kit: Heat shield SA	502 15 51-01

Kit: Heat shield 502 17 77-01 is fully interchangeable with Heat shield 502 15 51-01.

compl 502 14 49-02



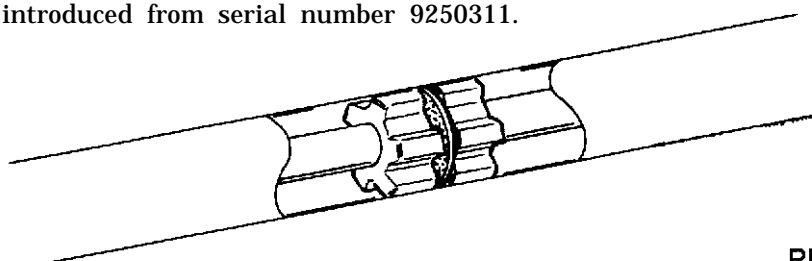
Tube compl.

In order to have a better support for the drive shaft a double top bearing together with a lubricated felt material is introduced in the tube.

Tubes with the double bearing are marked with a yellow colour for easy identification.

New Ref. No.	Description	Excluded Ref. No.
502 25 25-01	Tube	502 01 90-03

The change is introduced from serial number 9250311.



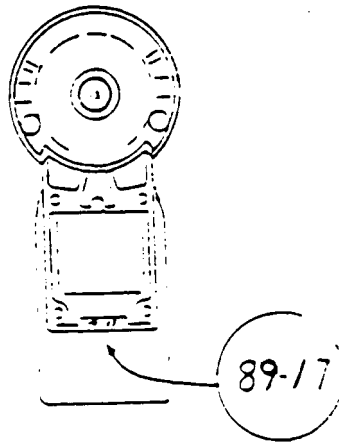
Please turn over!

Bevel gear

A changed manufacturing procedure together with new tools, which gives a higher and more even quality, is introduced.

Ref. No. for the bevel gear 502 10 70-01 remains unchanged.

The improved manufacturing procedure is introduced from date code 8917.

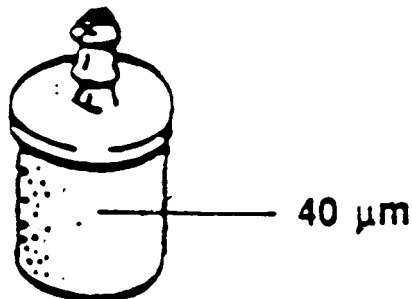


Fuel filter

The 70 micron fuel filter has been replaced by a new 40 micron fuel filter.

The Ref. No. 503 44 32-01 remains unchanged, but the 40 micron filter is white for easy identification.

The change is introduced from serial number 9140838.

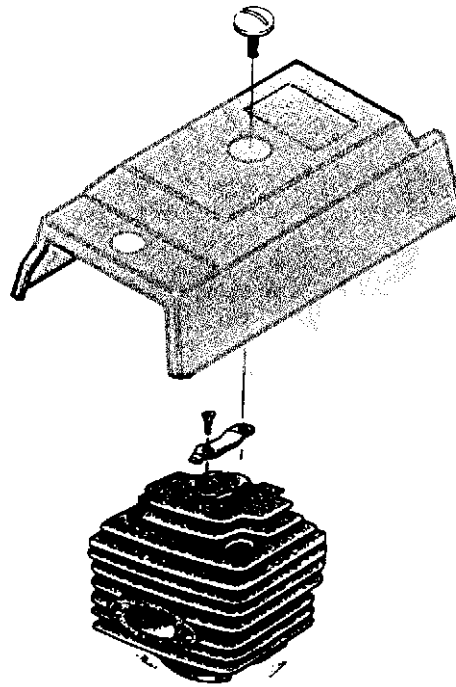


Cylinder cover

In order to get a better attachment of the cylinder cover the design of the cylinder cover is changed around the screw and the thickness of the bracket is increased.

Ref. No's cylinder cover 502 00 25-02 and bracket 502 01 02-01 remain unchanged.

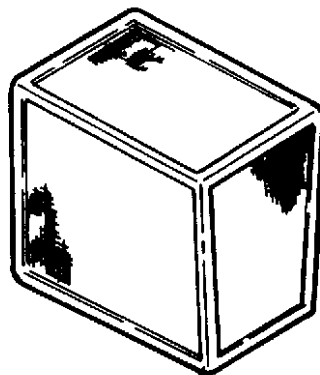
The changed is introduced from serial number 9250001.



Air filter

A new air filter with an improved filtration capacity is available as a spare part.

The new filter called "Non Woven" has the Ref. No. 502 10 54-03 and will replace the "Flock" filter Ref. No. 502 10 54-02.



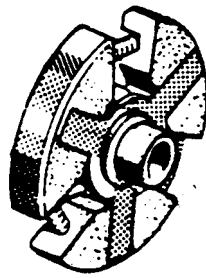
Please turn over!

Clutch

The design of the clutch shoes is changed in order to give less stress on the drive shaft and bevel gear.

Ref. No. 501 31 04-01 remains unchanged, but the clutch has a yellow colour mark for identification.

The change is introduced from serial number 9130151.



Supporting tube

The 'tower' on the supporting tube is reinforced, (see ill).

Ref. No. 502 00 66-02 remains unchanged but the "tower" is marked with "changing littera" F.

The change is introduced from serial number 9130151.

