

MODELS **2101-298**

CARBURETTOR HS 136 C (WITH GOVERNOR)

Carburettor HS 136 C (with Governor) is reintroduced on the versions 13 and 11 to receive a wider rpm range. Carburettor HS 136 C was earlier used on the model 2100 CD.

Carburettor HS 136 C Ref. No. 501 61 51-01 replaces Carburettor HS 136 G semi fix Ref. No. 503 28 03-05.

When introducing the carburettor with Governor, a hang tag will be attached to the handle showing the basic adjustment of the carburettor.

BASIC ADJUSTMENT: L = 1.1/4 H = 1.0

The change is introduced on the version 13 from serial number 2101: 8420112

The change is introduced on the version 11 from serial number 2101: 8420112

Carburettor HS 136 J (without Governor)

This carburettor is introduced on the versions:

- 12
- 14
- 17
- 51

When introducing carburetor HS 136 J, a hang tag will be attached to the handle, showing the basic adjustment of the carburettor

BASIC ADJUSTMENT L = 1.1/4 H = 1.0

NOTE! As the carburettor is not equipped with any kind of governor, it is important that the recommended maximum speed 10500 rpm is not exceeded.

The change was introduced on the version 12 from serial number	2101 : 8450020
14	2101 : 8450020
17	2101 : 8450020
51	2101 : 8450020

Spare parts

In order to prevent mixing of carburettors with or without governors, only carburettors with Governor will be available.

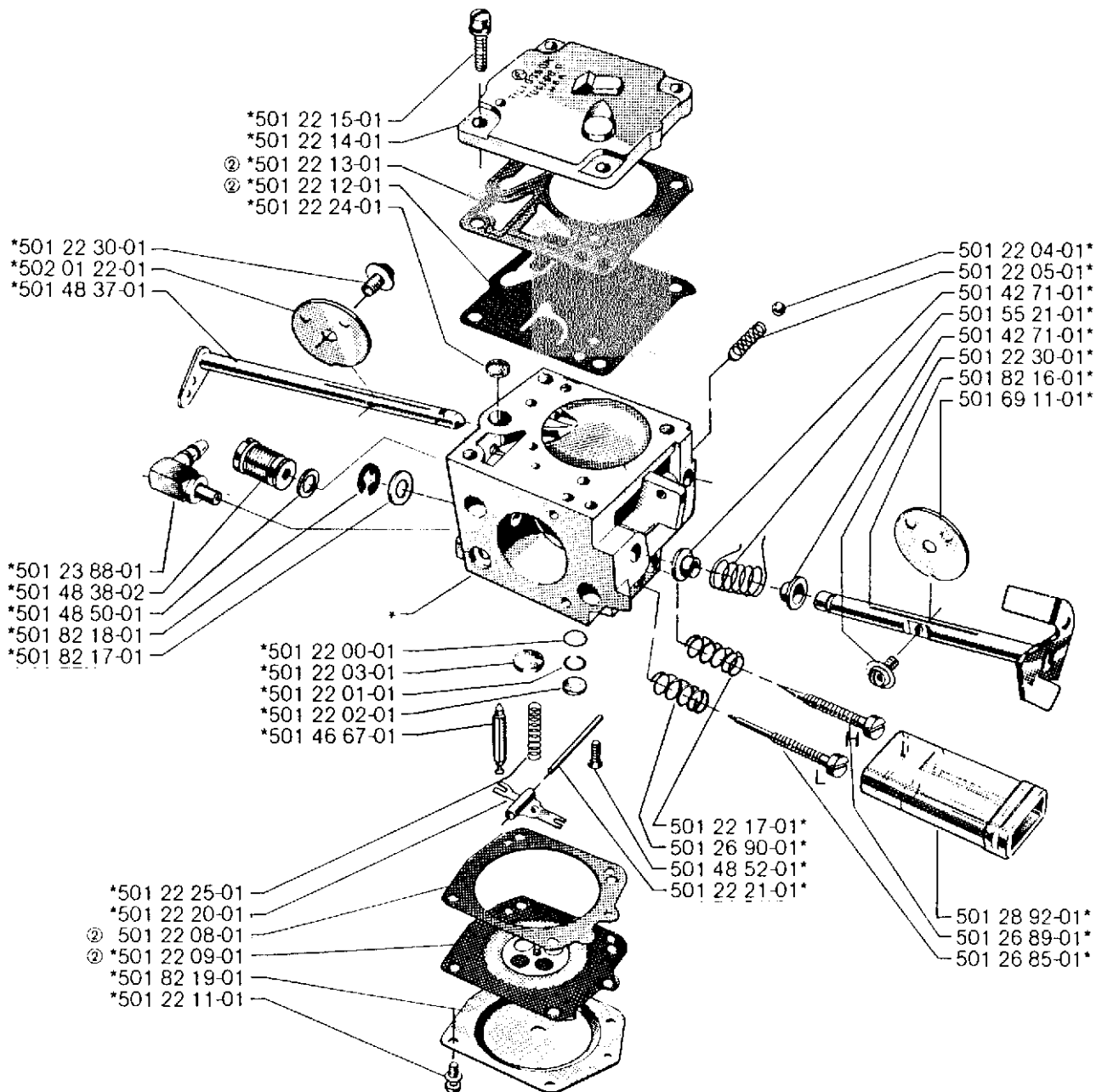
Carburettor HS 136 C Ref. No. 501 61 51-01 replaces Carburettor HS 136 G Ref. No. 503 28 03-05.

Carburettors "semi fix"

A kit consisting of jet 52 + H-needle is available as a spare part Ref. No. 503 58 09-07.

*compl 501 61 51-01

Tillotson HS 136 C



Ⓜ 501 49 48-02
 Packningssats
 Set of gaskets
 Dichtungssatz
 Jeu de joints