

MODELS

**238, 254**HANDGUARD

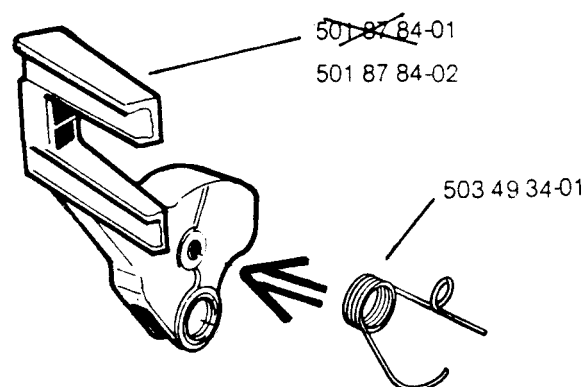
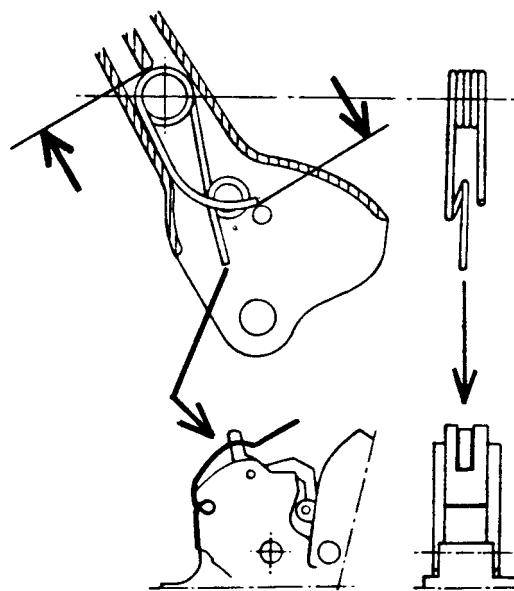
In order to give a more secure return of the handguard to neutral position after the brake has been disengaged, we have introduced a return spring.  
This is mounted inside the handguard. See below.

**238**

\*compl ~~501 79 67-02~~  
501 79 67-03

**254**

\*compl ~~501 87 40-02~~  
501 87 40-04

**ASSEMBLY**

Introduced from serial number:

238 G	7050851
238	7050159
254 G	7070001
254	7050211