



**Service
Bulletin**

B0403901

2004-02

Products: ZTH5225XP, ZTH6125XP, iZ5223, iZ6123, iZ4821 featuring
Kawasaki vertical shaft engines with a canister air filter system

Subject: Kawasaki intake elbow will warp when tightened down to the
carburetor

Attached is a Kawasaki Factory Directed Modification (FDM) notice to inform you of an update that needs to be completed on eligible Kawasaki engines. Kawasaki has found that the intake elbow will warp when tightened down to the carburetor. A new, reinforced intake elbow and beaded gasket has been developed to eliminate this problem.

Please consult the chart below to determine if you have one of the eligible engines. If so, Kawasaki will cover the purchase and installation of the repair kit under warranty. See the following pages for more information.

Eligibility:

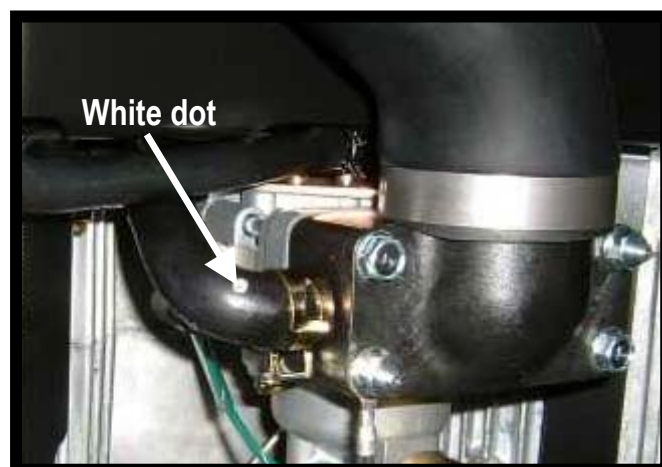
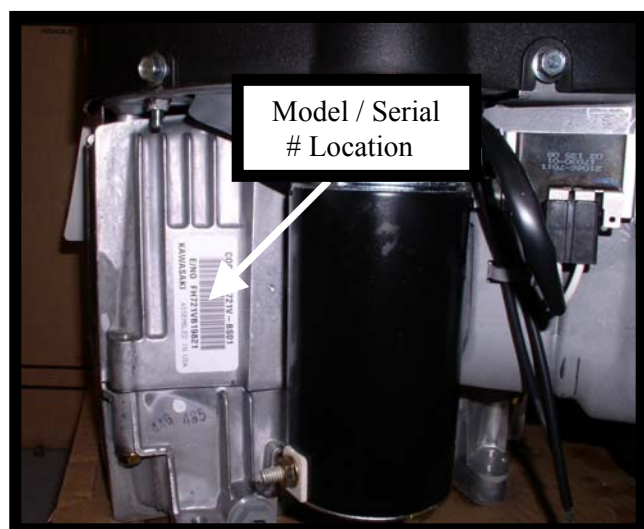
Kawasaki vertical shaft engine with a canister air filter system.

Eligible Engine Models:

Engine Model	If less than Serial Number
FH601V	B55466
FH641V	B16642
FH680V	B28625
FH721V	B25280

Exception:

If the engine has a white dot painted on the breather hose going to the intake elbow like pictured below, the engine was reworked at the factory before shipping and therefore not eligible for this repair.





Factory Directed Modification

ENG 04-01

Heavy Duty Canister Air Filter Intake Pipe Modification (FH 601V, 641V, 680V, 721V)

Jan. 12, 2003

Subject

Sealing area between the intake pipe and carburetor is deformed.

Kawasaki Action

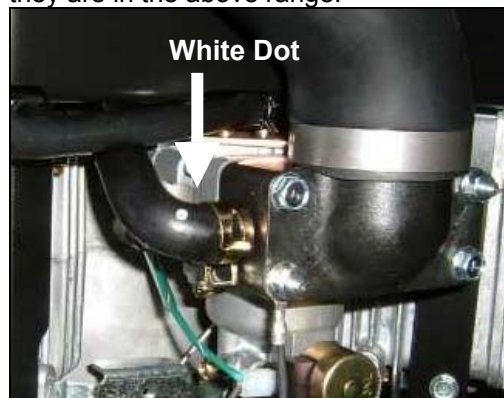
Kawasaki has reinforced the intake pipe and added a bead on the gasket. Kawasaki has also reworked engines in inventory and initiated a Factory Directed Modification (FDM) campaign to repair eligible field units. Each machine manufacture will notify end users of this campaign and direct them to an authorized dealer for repair.

Eligibility

Eligible Units

Model	Eligibility	Serial number Range
FH601V	Any engine that has Heavy Duty Canister Air Filter installed.	Before B55460
FH641V		Before B16642
FH680V		Before B28625
FH721V		Before B25280

Engines in the above serial numbers range are eligible. Engines with a white dot painted on the **breather hose**, have been reworked before shipping to dealers and are not eligible for this repair even if they are in the above range.



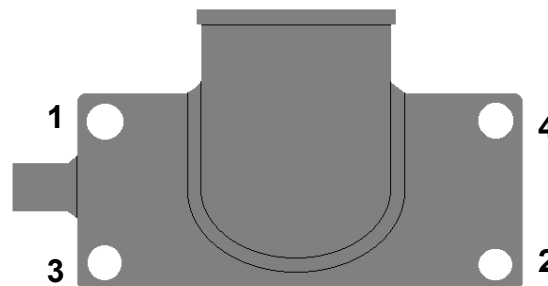
Dealer Action

Repair Eligible Units:

Repair all eligible units that have a heavy-duty canister air filter by installing a new reinforced plastic intake pipe and beaded gasket.

Bolt Torque Specs: 4.3-5.7 ft/lbs.

Make sure to follow bolt torque pattern.



Parts Information

Kawasaki has created a repair kit for this campaign, so please order them as required through the normal parts ordering system.

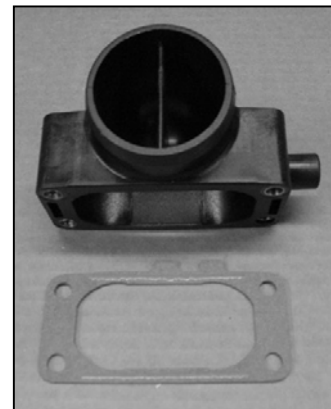
Part Name	Part Number
Kit	99999-7038
Parts Contained	Intake Pipe
	Gasket

Kit contains intake pipe and beaded gasket.

Old Parts



New Parts



Gasket should be installed with the tab down.

Warranty Information

This is a Factory Directed Modification (FDM). The labor and parts costs will be reimbursed upon your warranty claim request.

Models	FH 601V, 641V, 680V, 721V
Flat Rate Time	.5 hrs.
Causal Part	Intake Pipe
Causal Part No.	16060-7005
Qty	1
Labor Code	2306
Claim Type	3

Spare Parts

Some dealers may have Heavy Duty Canister Accessory Kits in their parts inventory. These kits may have the old intake elbow and gasket and need to have the parts replaced inside the kit. Kawasaki will replace the parts at no charge.

Dealers will need to call the Kawasaki Technical Hotline (866-836-4463) and give the quantity of kits they will need. The hotline will then send the kits out UPS ground to the dealer.

Kits or individual parts that need to have intake & gasket changed.	
Description	Part Number
Canister Kit	99999-7007
Canister Kit	99999-7008
Canister Kit	99999-7010
Canister Kit	99999-7011
Canister Kit	99999-7012
Intake	16060-7005
Gasket	11060-7009