



SERVICE	B0403004
BULLETIN	2004-04

Subject: Hold down latch for DT22 with bagging attachment (BG22)

Models Affected: 539106667-bagger accessory kit, Kits ordered before 03/15/2004

Service Information: The bagger frame in the DT 22 bagger accessory kit can lift off the mounting brackets when empty. A hold down latch has been implemented to secure the bag in place during operation. The part number for this is 539 110981. The following sheet provides mounting instructions.

Warranty information: This part can be claimed for warranty but no time is allowed.

BAG LATCH KIT PART NO. (539) 110981

1. Remove the bag from the Power Rake unit.
2. Measure to the point in Figure 1 and mark the spot to drill.
3. Center punch and drill at the point you marked with a $21/64"$ (8.5mm) drill bit.
4. Deburr the sharp edge of the hole, and install the components as shown.

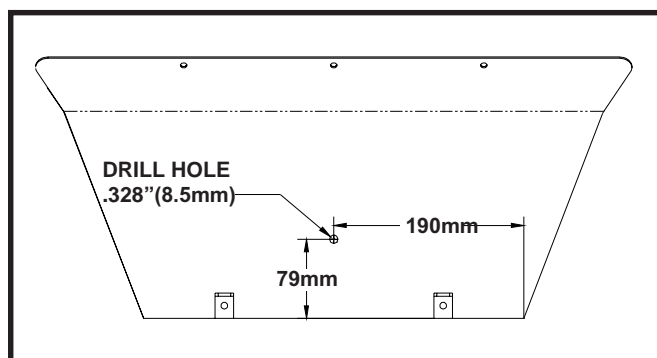


FIGURE 1

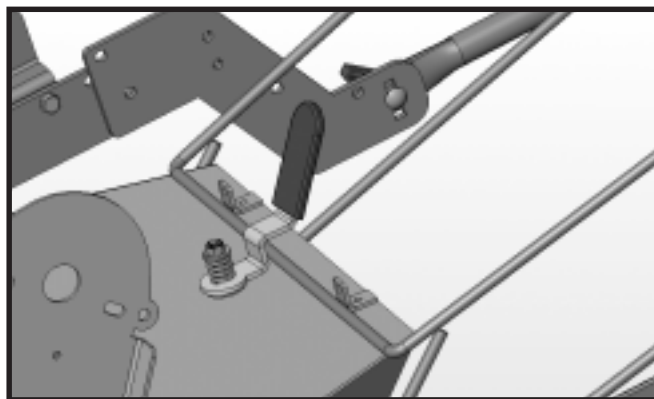
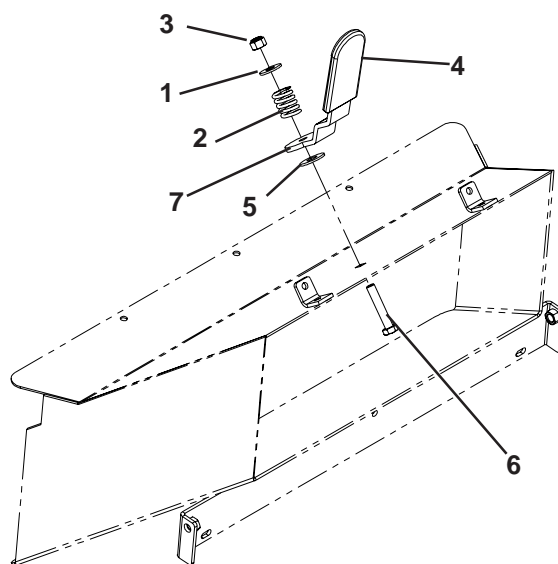


FIGURE 2



ITEM	PART NO.	QTY.	DESCRIPTION
1	(539) 990692	1	WASHER, 5/16
2	(539) 976438	1	SPRING
3	(539) 990717	1	NUT, 5/16C, NYLOC
4	(539) 110865	1	GRIP, BLACK VINYL
5	(539) 990517	1	WASHER, 3/8
6	(539) 990669	1	HCS, 5/16-18 X 1 3/4
7	(539) 110982	1	HANDLE