



**Service
Bulletin**

B0302008

2003-11

Products: **55B21HV**
 55R21HV
 65RSW21HV

Subject: **Drive Control / Pinion Replacement Kit**

A repair kit has been developed to correct drive system issues for the above models. This kit contains a new drive control, left and right drive pinions, o-rings and flat washers.

A detailed instruction sheet is also included in the kit to assist with the installation (see page 2).

Part No.	Description
*532 18 95-63	Drive Control / Pinion Replacement Kit

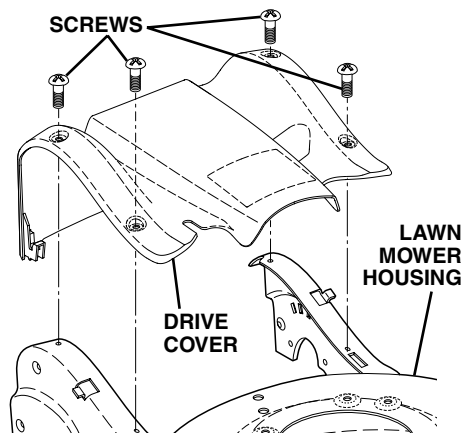
*Kit contains:	Part No.	Description	Qty.
	532 18 53-12	drive control	1
	532 18 81-52	o-ring	4
	532 08 83-48	flat washer	4
	532 18 83-30	pinion assy. - RH	1
	532 18 83-31	pinion assy. - LH	1

DRIVE CONTROL / PINION REPLACEMENT INSTRUCTIONS

KIT CONTENTS: (1) Drive Control Assembly (with Cable) (4) O-Rings (4) Flat Washers, 3/8"
 (1) Pinion Assembly, LH (wrapped in clear plastic) (1) Pinion Assembly, RH (wrapped in white plastic)

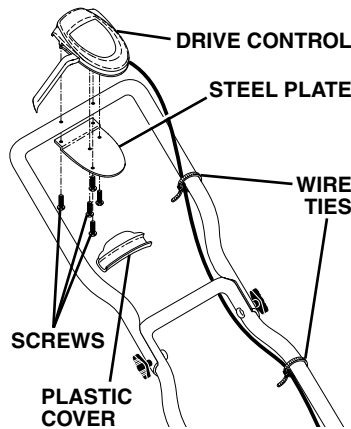
PREPARATION

1. Disconnect spark plug wire from spark plug and place wire where it cannot come in contact with plug.
2. Remove the four (4) screws securing the drive cover and remove drive cover from lawn mower housing.

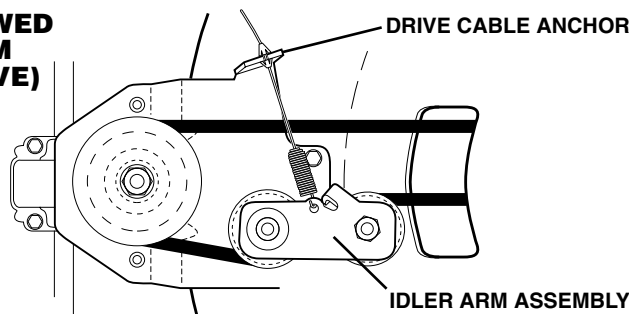


REMOVE EXISTING DRIVE CONTROL

1. Snap the plastic cover off of the existing drive control and set aside.
2. Remove the five (5) screws securing steel plate to upper handle.
3. Remove wire ties securing drive control cable to upper and lower handles.
4. Remove drive cable from anchor, then detach the drive cable spring from the idler arm assembly.



(VIEWED FROM ABOVE)



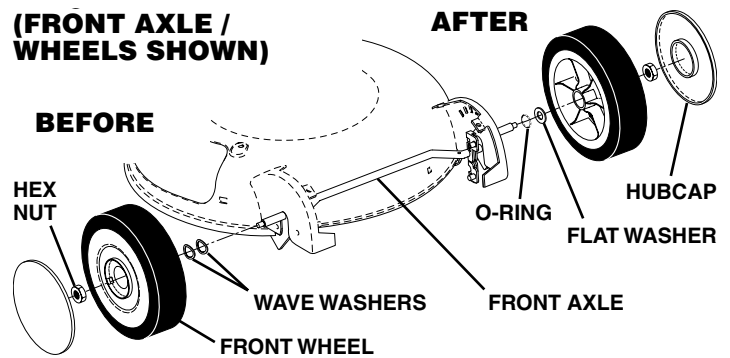
INSTALL NEW DRIVE CONTROL

Install new drive control / cable assembly by reversing the above steps.

FRONT WHEELS

1. Remove hubcaps (if so equipped) and hex nuts securing front wheels. Remove front wheels from lawn mower.
2. Remove existing wave washers and discard them.
3. Install one of the provided O-Rings on each side of the front axle (where the wave washers were located).
4. Install one of the provided flat washers on each side of the front axle (between O-Rings and wheels, as shown).
5. Reinstall front wheels and secure with hex nuts previously removed. Reinstall front hubcaps (if so equipped).

(FRONT AXLE / WHEELS SHOWN)



REAR WHEELS

1. Remove hubcaps (if so equipped) and hex nuts securing rear wheels. Remove rear wheels from lawn mower.
2. Remove existing wave washers and discard them.
3. Install one of the provided O-Rings on each side of the rear axle (where the wave washers were located).
4. Install one of the provided flat washers on each side of the rear axle (between O-Rings and wheels, as on front).

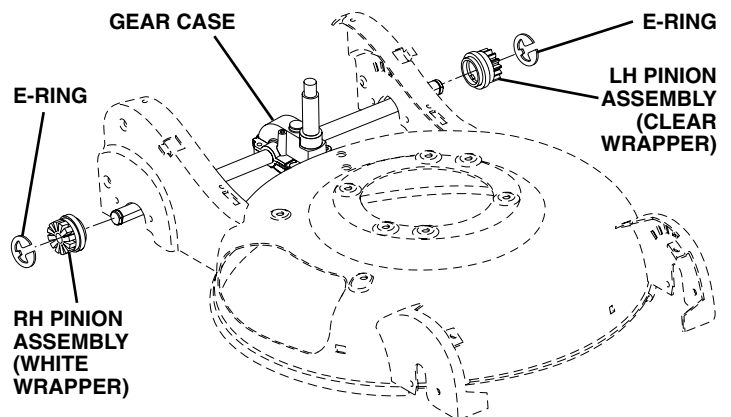
PINION ASSEMBLIES

1. Remove the E-Rings securing the existing pinion assemblies to the shafts of the gear case. Remove existing pinion assemblies and discard them.
2. Install new pinion assemblies and secure with E-Rings previously removed.

NOTE: The RH Pinion Assembly is wrapped in white plastic, the LH pinion assembly is wrapped in clear plastic.

IMPORTANT: BE SURE TO INSTALL EACH PINION ASSEMBLY ON THE APPROPRIATE SIDE OF MOWER.

4. Remove plastic wrapping from both pinion assemblies.



FINISHING

1. Reinstall rear wheels and secure with hex nuts previously removed. Reinstall rear hubcaps (if so equipped).
2. Reinstall drive cover and secure with screws previously removed.
3. Reconnect spark plug wire to spark plug.
4. Start engine and operate drive control to verify that all new parts were installed correctly and function properly.