



Service Bulletin	B0302005
	2003-06

Products: **5521CH Walk Mower (2003 model year only)**

Subject: **Debris Shield/ Lower Belt Cover Replacement Kit # 532188305**

To better secure the debris shield onto the deck and prevent it from coming loose and damaging the drive belt, a replacement debris shield kit has been developed. The new kit replaces the snap-on debris shield with a screw mounted debris shield.

The new kit comes with the debris shield, screw, nut and instruction sheet.

Part No.	Description
532 18 83-05	Debris shield replacement kit

DEBRIS SHIELD REPLACEMENT KIT NO. 188305

Kit Contains:

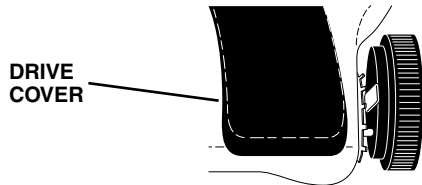
- (1) Debris Shield
- (1) Screw
- (1) Nut

Part No.

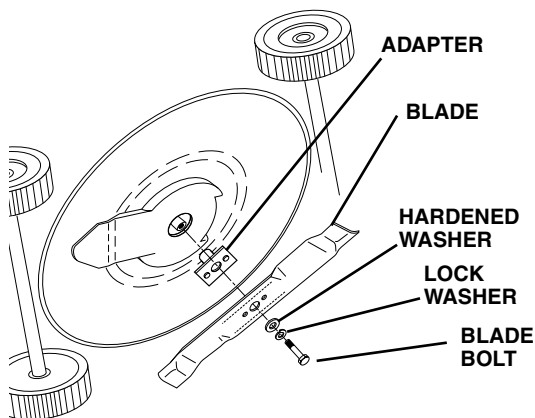
- 532187308
- 874180410
- 532751152

REPLACEMENT INSTRUCTIONS

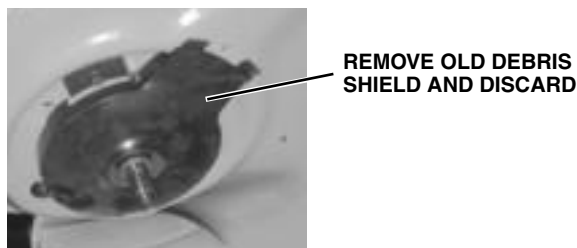
1. Remove spark plug wire from spark plug and place wire where it cannot come in contact with plug.
2. Remove drive cover and set aside for reassembly.



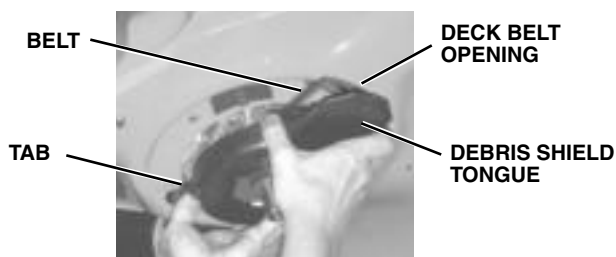
3. Remove blade bolt, washers, blade and adapter.



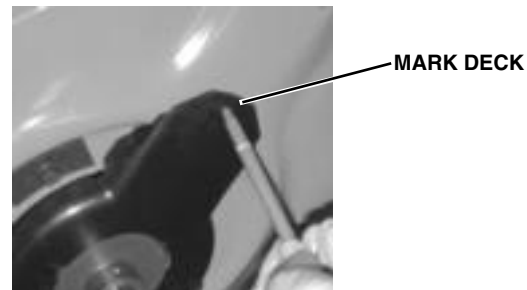
4. Remove old debris shield and discard.



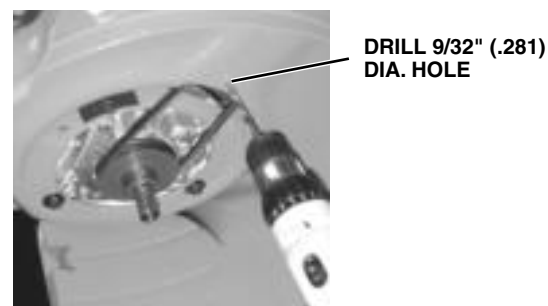
5. Install new debris shield by slipping tabs of the shield around the deck ring.
6. Rotate shield to align shield tongue with deck belt opening. Be sure belt is not touching debris shield.



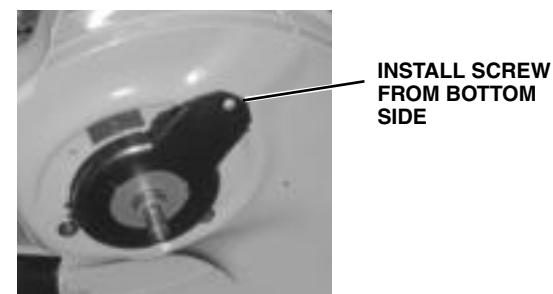
7. Mark deck through hole in debris shield tongue.



8. Remove debris shield and drill at the mark a 9/32" (.281) dia. hole in deck.



9. Install new debris shield and secure with screw and nut provided in kit. Tighten securely.



10. Reassemble blade adapter and blade to mower. Tighten blade bolt to 35-40 ft. lbs. torque.
11. Reassemble drive cover to mower. Tighten screw securely.
12. Attach spark plug wire to spark plug.