



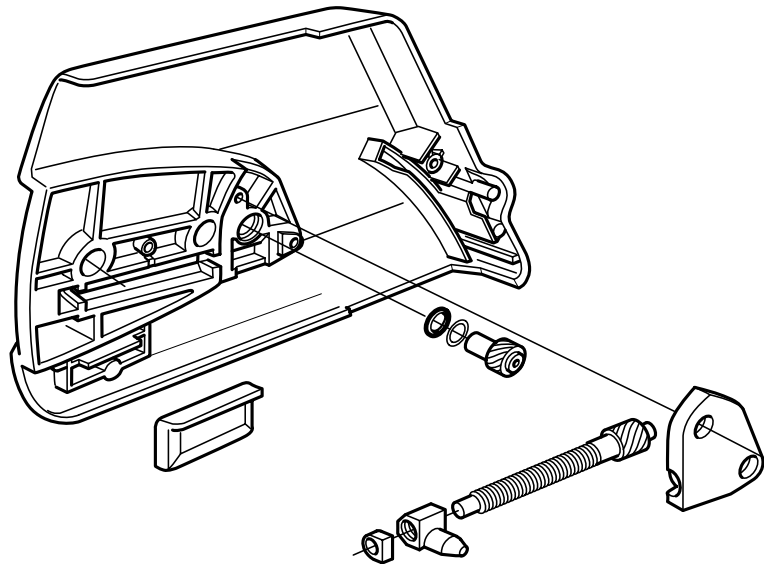


SERVICE 		9 B0001003
--	--	-----------------------------

English 1 (1)

SB, 372, 365 Special, Clutch cover, 2000-01

A clutch cover with a side-mounted chain tensioner has been introduced on the following models. It can also be fitted to earlier models (371, 365) after removing the chain tensioner from inside the crankcase. The earlier version of the clutch cover will no longer be available as a spare part. The model 362 with the small bar mounting retains its original combination of clutch cover/chain tensioner.



New ref. no.	Description	Excl. ref. no.	Remarks
537 03 35-01	Clutch cover assy.	503 79 61-01	with fitted chain tensioner
537 04 41-02	Chain tensioner kit		without fitted chain tensioner
537 03 35-71	Clutch cover		