



Illustrated Parts
List

2000-04
10002010

Hydro-Gear



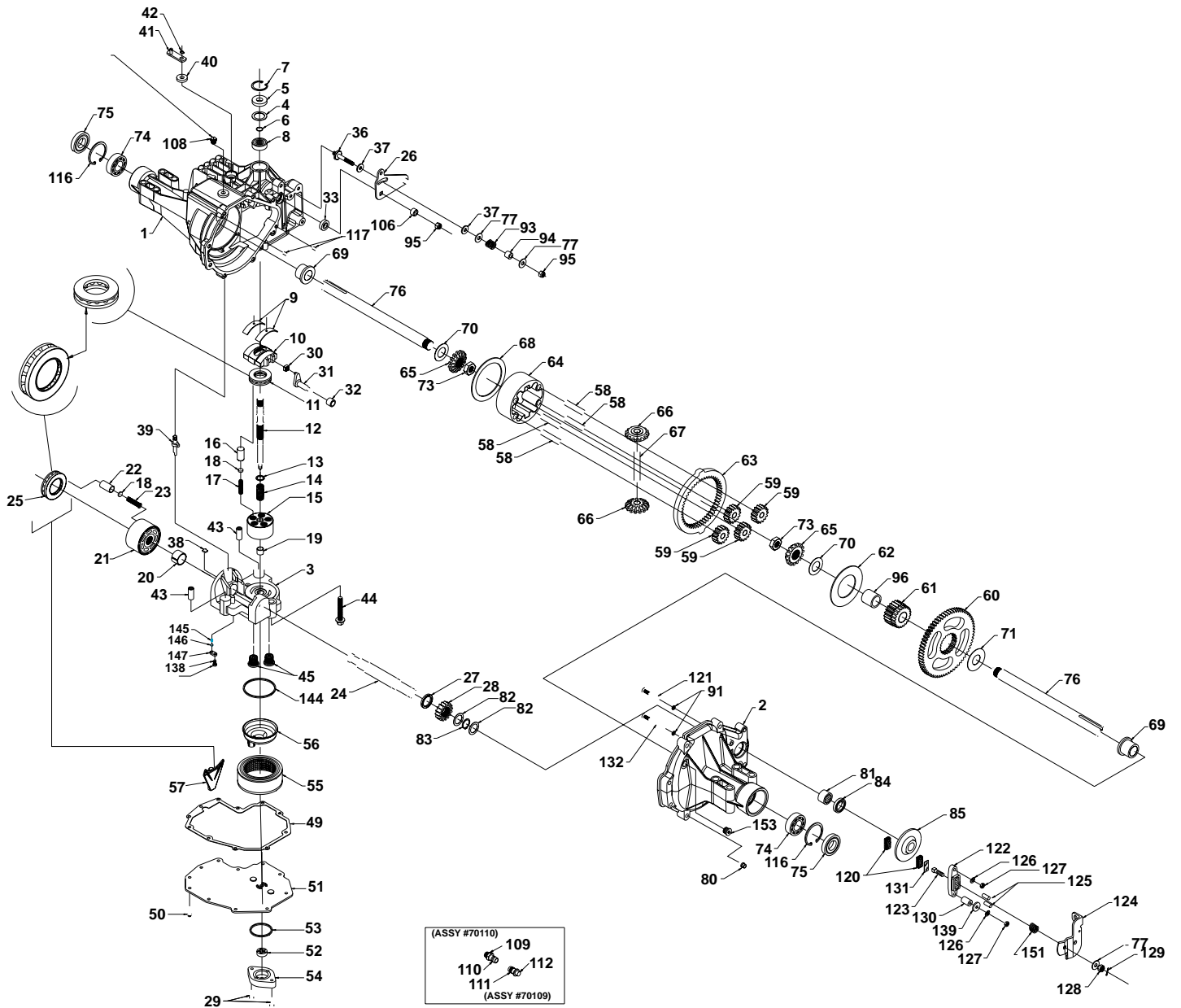
Transaxle

314-3000

This parts list is for information purposes only.

Please contact the transaxle manufacturer to order repair parts or complete transaxles, as these are not available through Husqvarna.

HYDRO GEAR TRANSAXLE 314-3000



HYDRO GEAR TRANSAXLE 314-3000

KEY PART NO. NO.	DESCRIPTION	KEY PART NO. NO.	DESCRIPTION		
1	70297	Main housing assembly	64	50765	Planetary carrier
2	70298	RH housing assembly	65	50647	Miter gear. diff. (splined)
3	70299	Center section assembly	66	50648	Miter gear, diff.
4	2003018	Spacer	67	50766	Shaft, differential
5	9008000-0128	Seal-lip	68	50767	Diff. thrust plate
6	2003016	Wire retaining ring	70	50770	Washer
7	2003052	Retaining ring	71	50788	Washer
8	2003043	Ball bearing	73	50791	Hex jam nut, 5/8-18
9	2003023	Cradle bearing	75	50772	Seal, 1" ID x 2.0472 x 0.375
10	2003087	Variable swashplate	76	50663	Shaft, axle
11	50551	Thrust bearing 30 x 52 x 13	77	44130	Washer
12	50795	Input shaft	79	44813	Gasket material
13	2003017	Block thrust washer	80	50868	Torx head screw, 5/16-18
14	2003014	Block spring	81	44752	Needle bearing (SCE1412)
15	70079	10cc cylinder block assembly	82	50777	Washer
21	70082	10cc cylinder block assembly	83	50775	Retaining ring
24	50662	Output (motor) shaft	84	50773	Lip seal (.8751.D. x 1.30.D. x.25)
25	50552	Thrust bearing 42 x 68 x 16	85	50779	Brake disk
26	50857	Control arm	96	50866	Sleeve bearing
27	50774	Spacer	93	50277	Spring, friction pack
28	50661	16t pinion gear	94	50278	Spacer, friction pack
29	50940	Capscrew, M6 x 1-22	95	50108	Hex lock nut 5/16-24
30	2000015	Slot guide	97	50006	Oil
31	50807	Trunnion arm	106	50850	Spacer, trunnion
32	2003009	Trunnion bushing	109	70110	Fitting-O ring assembly
33	9008000-0126	Lip seal	111	70109	Cap-vent assembly
36	50284	5/16-24 stud	116	50059	Retaining ring
37	50281	Puck, friction	117	9004800-2506	Std hdls pin
38	2003554	Bypass plate	120	44132	Puck, brake
39	2003555	Bypass actuator	122	50879	Brake yoke
40	45074	Lip seal	123	44138	Bolt, square head
41	50270	Bypass arm	124	50916	Arm, brake
42	44870	Retaining ring	125	44127	Pins, brake
43	50002	Pin	126	43177	Lockwasher, 1/4
44	50016	Screw	127	43178	Nut, 1/4-20
49	50783	Gasket, lower	128	44142	Nut, castle
50	50437	Screw-self tapping	129	44101	Cotter pin
51	50785	Lower cover	1 3d	23711	Spacer
52	50273	Gerotor assembly	131	44134	Puck plate
53	9004101-1340	O-ring	138	50653	Screw
54	50260	Gerotor cover	139	44278	Washer, 7/80D x .2651D x .125 THK
55	50784	Filter	T44	50793	O ring, 2.864 ID 0.070 THK
56	50786	Charge manifold	145	50654	Charge relief spring
57	50796	Retainer, motor bearing	T46	9001214-2500	Ball
58	50776	Pin, carrier	147	50651	Plate, relief
59	50763	15t planet gear	151	50919	Comp. spring, brake anti-drag
60	50646	67t spur gear	153	9005110-5600	Plug, straight thread
61	50645	21 tooth sun gear			
62	50769	Planet thrust plate			
63	50764	51t ring gear			

NOTE: All component dimensions given in U.S. inches
1 inch = 25.4 mm