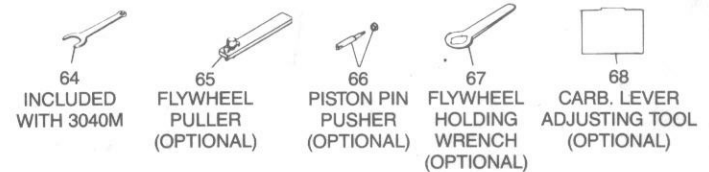
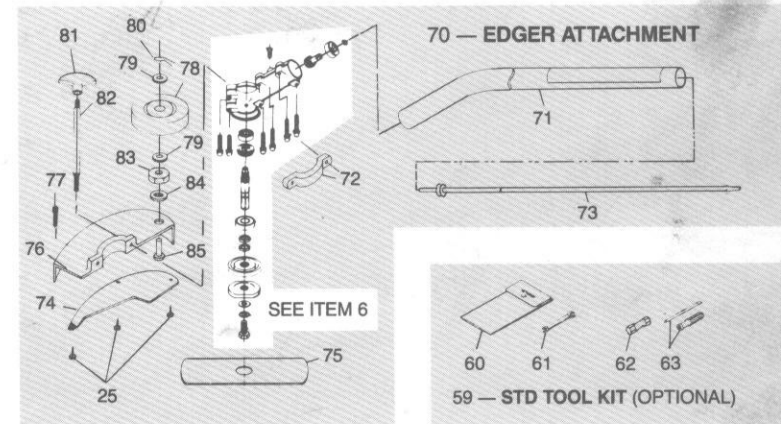
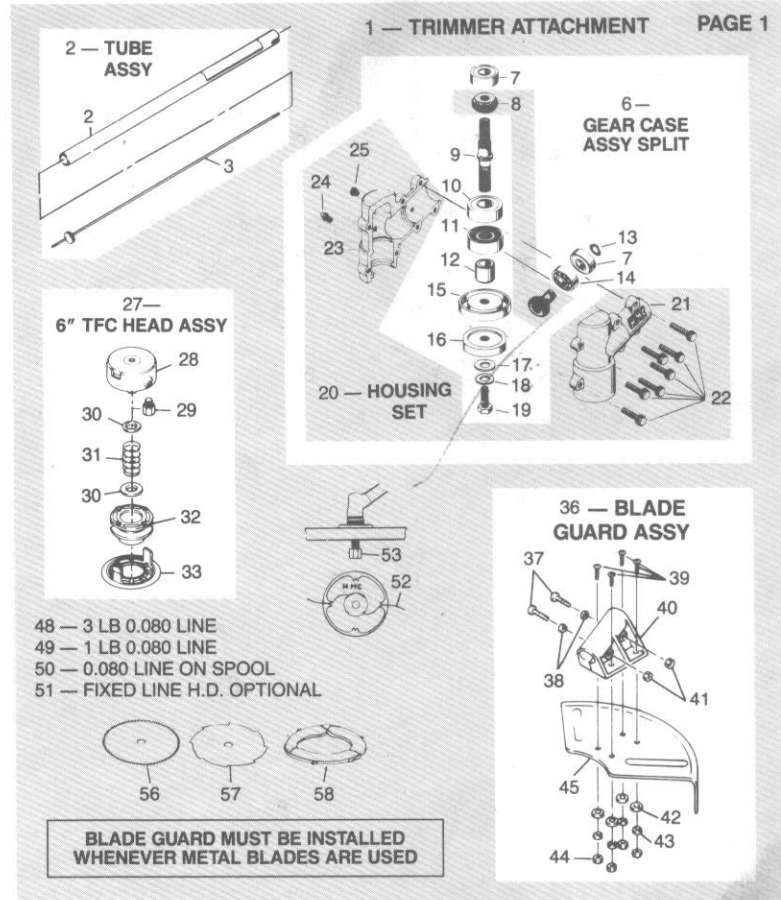


# The Green Machine®

HMC, P.O. Box 560, Long Beach, CA 90801-0560  
20710 So. Alameda Street, Long Beach, CA 90810

## EXPLODED PARTS VIEW AND NUMERICAL PARTS LIST FOR MODEL 3010M AND ATTACHMENTS

ITEM	PART NUMBER	DESCRIPTION
1	3041M	BRUSHCUTTER/TRIMMER ATTACH
2	280331	TUBE ASSY KIT 1.023 DIA
3	357802	FLEX CABLE
4		
5		
6	250320	GEARCASE ASSY
7	070006	BEARING
8	230323	GEAR SET KIT
9	300055	GEARSHAFT
10	070005	BEARING
11	080003	SEAL
12	300065	COLLAR
13	060007	SNAP RING
14	070007	BEARING
15	300070	HOLDER A
16	300075	HOLDER B
17	041003	WASHER
18	040007	WASHER
19	300080	BOLT
20	300610	HOUSING SET
21	306706	GEARCASE - L.H.
22	011309	SCREW
23	306709	GEARCASE - R.H.
24	286710	GREASE FITTING
25	011310	SCREW
26		
27	20725	6" TFC HEAD ASSY
28	300312	6" HEAD BODY
29	226701	ARBOR
30	166903	PLATE, SPRING
31	167901	SPRING
32	305203	6" SPOOL
33	305202	6" HEAD CAP
34		
35		
36	24700	BLADE GUARD ASSY
37	011417	SCREW
38	041002	WASHER
39	011418	SCREW
40	245201	BLADE GUARD BRACKET
41	051012	NUT
42	041004	WASHER
43	041101	WASHER
44	051002	NUT
45	247001	GUARD
46		
47		
48	31004	GREEN LINE .080 3 LB
49	31005	GREEN LINE .080 1 LB
50	32007	GREEN LINE
51	25250	FIXED LINE HEAD ASSY
52	31105	GREEN LINE .105 STRIPS
53	325205	ARBOR BOLT
54		
55		
56	92130	SAW BLADE
57	92140	BRUSH BLADE
58	94110	BLADE COVER
59	300185	TOOL SET
60	309925	TOOL BAG
61	190105	SPANNER
62	309928	SOCKET
63	190104	SCREWDRIVER
64	300190	SPANNER
65	257602	PULLER
66	309951	PISTON PIN PUSHER
67	309732	FLYWHEEL HOLDER
68	309734	CARB. LEVER ADJ. TOOL
69		
70	2851	EDGER ATTACHMENT
71	280313	TUBE ASSY 1.00 DIA
72	236110	BRACKET EDGER GUARD
73	257802	FLEX CABLE
74	286901	EDGER SHIELD



ITEM	PART NUMBER	DESCRIPTION
75	237001	EDGER BLADE (NOT SHARP)
76	286110	EDGER GUARD
77	237604	SCREW
78	235102	EDGER WHEEL
79	236908	WASHER
80	236907	COTTER PIN
81	190120	KNOB
82	236707	SHAFT HANDLE
83	051017	JAM NUT
84	041007	WASHER
85	237610	EDGER AXLE

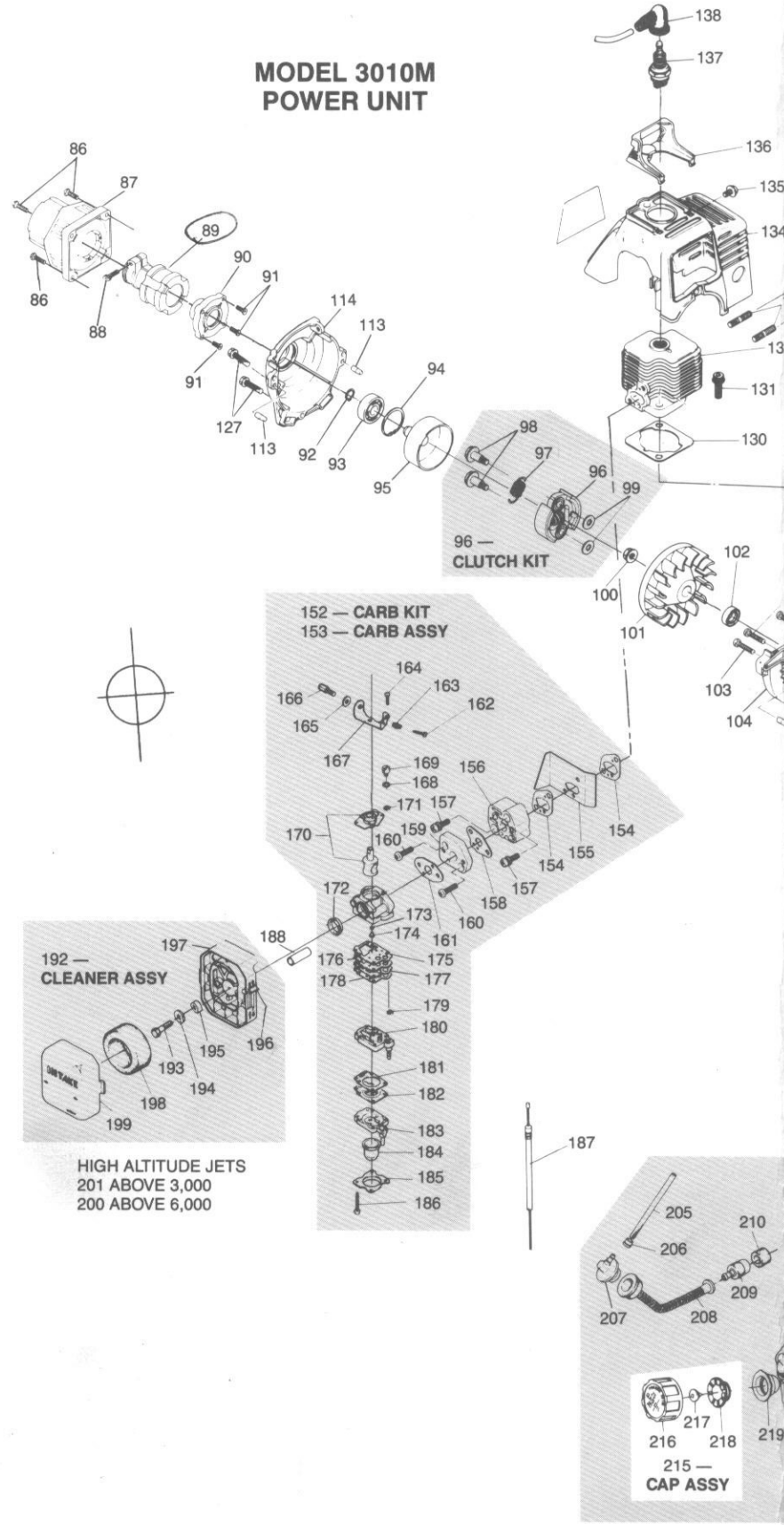


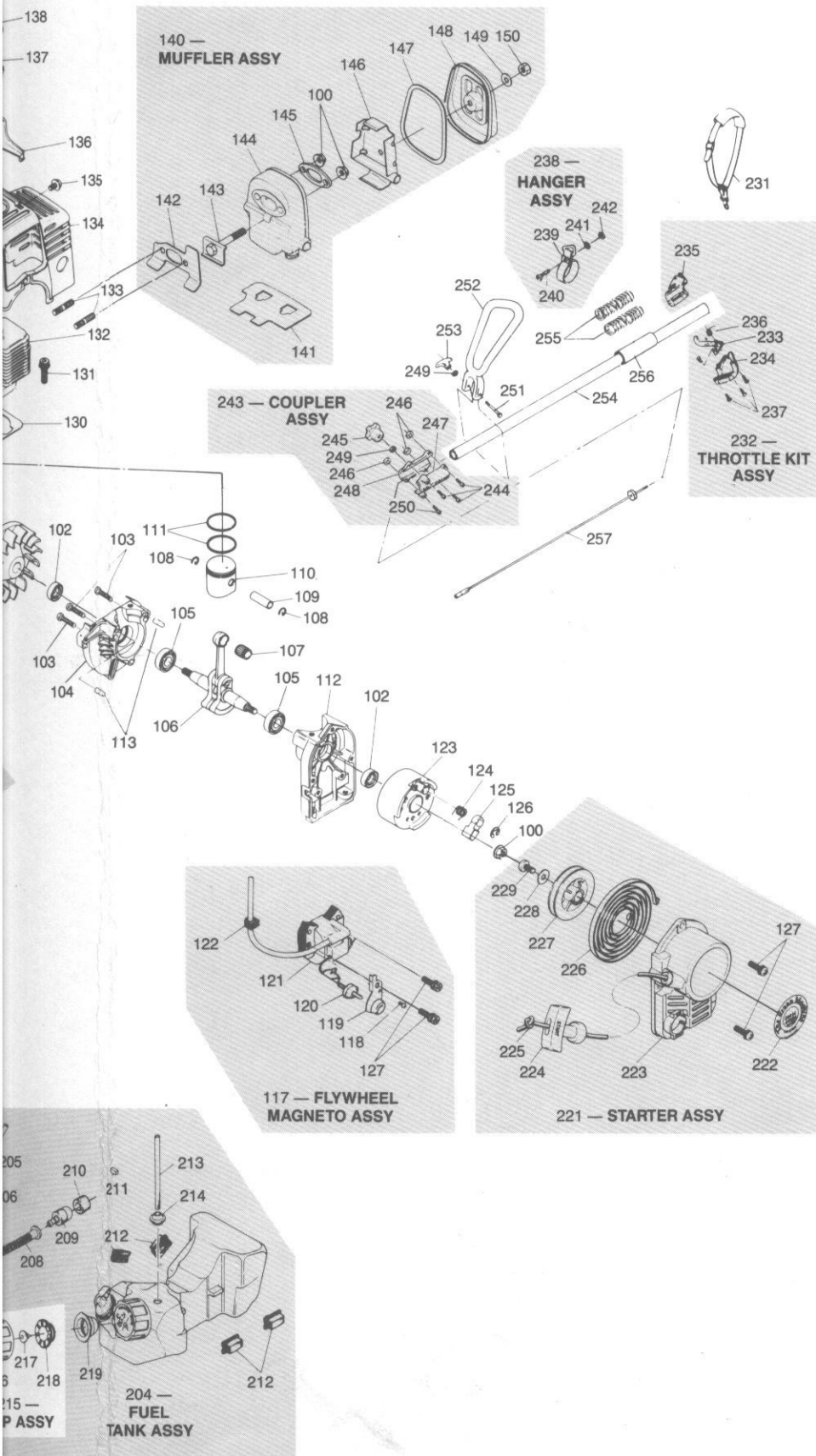
20710 S. ALAMEDA ST., LONG BEACH, CA 90810 • (213) 603-9888 • TELEX 696396  
P.O. BOX 560, LONG BEACH, CALIFORNIA 90801-0560 • FAX (213) 635-3526

[www.mymowerparts.com](http://www.mymowerparts.com)

ITEM	PART NUMBER	DESCRIPTION
86	030016	BOLT & WASHER
87	306114	CASE, CLUTCH
88	030008	SCREW
89	305507	INSERT RING
90	306113	BEARING COVER
91	010134	SCREW
92	062101	SNAP RING
93	070009	BEARING, BALL
94	060015	SNAP RING
95	306710	CLUTCH DRUM
96	190111	CLUTCH SHOE KIT
97	190026	CLUTCH SPRING
98	012448	SCREW
99	040010	WASHER
100	052801	NUT, CONICAL SPG.
101	286101	FAN
102	081502	OIL SEAL
103	002805	SCREW
104	286702	CASE, DRIVE
105	071009	BEARING, BALL
106	286703	CRANKSHAFT ASSY.
107	071410	BEARING, NEEDLE
108	062803	CLIP, PISTON PIN
109	286105	PIN, PISTON
110	286706	PISTON
111	062804	RING, TOP
112	287301	CASE, STARTER
113	288204	PIN, DOWEL
114	286112	CASE, COVER
115		
116		
117	280317	FLYWHEEL/MAGNETO ASSY
118	002807	SCREW
119	286103	BRACKET
120	283101	SWITCH, STOP
121	284001	COIL, IGNITION
122	285501	GROMMET
123	286707	ROTOR
124	287902	SPRING, RETURN
125	286106	RATCHET
126	062805	SNAP RING
127	032803	BOLT & WASHER
128		
129		
130	287403	GASKET, CYLINDER
131	032805	BOLT, FLANGE
132	286705	CYLINDER
133	032804	BOLT, STUD
134	286704	COVER, TOP
135	002808	SCREW & WASHER
136	286104	GUARD, SPARK PLUG
137	190036	SPARK PLUG (NGK BM6A)
138	285502	CAP, PLUG
139		
140	280318	MUFFLER ASSY
141	287406	GASKET
142	287404	GASKET, MUFFLER
143	032806	BOLT, FLANGE
144	286708	BODY, MUFFLER
145	286108	PLATE
146	286107	PLATE
147	287405	GASKET, MUFFLER SEAL
148	286109	LID, MUFFLER
149	042803	WASHER, SEAL
150	052803	NUT
151		
152	287202	CARB. KIT
153	287201	CARB. ASSY
154	287402	GASKET, INSULATOR
155	287206	PLATE
156	285201	INSULATOR
157	002804	SCREW & WASHER
158	287401	GASKET, CARBURETOR
159	287228	SPACER
160	002810	SCREW
161	287410	GASKET CARB.
162	247213	SCREW, IDLE ADJUST.
163	247214	SPRING, IDLE ADJUST
164	307209	SCREW
165	247207	NUT, CABLE ADJUSTER
166	247206	ADJUSTER, CABLE
167	247201	BRACKET, IDLE ADJUST.
168	247205	PLUG
169	287205	SWIVEL
170	287202	VALVE, THROTTLE
171	247202	RING, SWIVEL

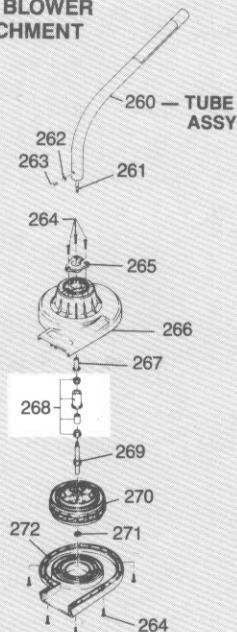
**MODEL 3010M  
POWER UNIT**





ITEM	PART NUMBER	DESCRIPTION
172	247210	PACKING
173	247211	RING
174	287203	MAIN JET
175	307206	GASKET, PUMP
176	307207	DIAPHRAGM
177	257206	GASKET
178	257204	GASKET
179	287204	SCREEN, INLET
180	287205	BODY ASSY
181	247405	GASKET, DIAPHRAGM
182	170121	DIAPHRAGM
183	287207	BODY, PRIMER PUMP
184	247223	PUMP, PRIMER
185	247224	COVER, PRIMER PUMP
186	167212	SCREW, COVER
187	357102	THROTTLE CABLE
188	247209	SLEEVE
189		
190		
191		
192	<b>240308</b>	<b>CLEANER ASSY.</b>
193	002811	SCREW & WASHER
194	040066	WASHER
195	248205	SLEEVE
196	248206	LEVER, CHOKE
197	248201	BODY CLEANER
198	248202	FILTER
199	248203	COVER, CLEANER
200	257208	HIGH ALTITUDE JET
201	257207	HIGH ALTITUDE JET
202		
203		
204	<b>280303</b>	<b>FUEL TANK ASSY</b>
205	285402	TUBE, FUEL
206	062806	CLIP
207	285406	JOINT
208	285403	HOSE, SUCTION
209	280304	FILTER, FUEL
210	282806	FILTER
211	282807	SPONGE
212	282808	PAD
213	285401	TUBE, FUEL
214	285407	BUSHING
215	<b>280302</b>	<b>TANK CAP ASSY</b>
216	285405	CAP, TANK
217	282809	VALVE, BREATHER
218	282810	HOLDER
219	287409	GASKET
220		
221	<b>287302</b>	<b>STARTER ASSY</b>
222	289502	LABEL NAME
223	287307	CASE, STARTER
224	287306	KNOB, STARTER
225	287305	ROPE, STARTER
226	287304	SPRING, SPIRAL
227	287303	REEL
228	042804	WASHER
229	002812	SCREW
230		
231	300180	HARNESS
232	<b>280340</b>	<b>THROTTLE HOUSING KIT</b>
233	235214	THROTTLE LEVER
234	285203	CLAMP L.H.
235	285204	CLAMP R.H.
236	167101	SPRING THROTTLE TRIGGER
237	201044	SCREW
238	<b>300245</b>	<b>HANGER ASSY</b>
239	300150	HANGER
240	010002	SCREW
241	041101	WASHER
242	050003	NUT
243	<b>280312</b>	<b>COUPLER ASSY</b>
244	011426	SCREW
245	285204	KNOB
246	051016	NUT
247	236112	COUPLER R.H.
248	236111	COUPLER L.H.
249	040016	WASHER
250	030017	BOLT
251	257606	BOLT
252	235209	ASSIST HANDLE
253	190120	KNOB
254	<b>280330</b>	<b>TUBE ASSY</b>
255	307903	SPRING, ANTI-VIBE
256	305506	GRIP, ANTI-VIBE
257	<b>230353</b>	<b>FLEX CABLE KIT</b>
258		

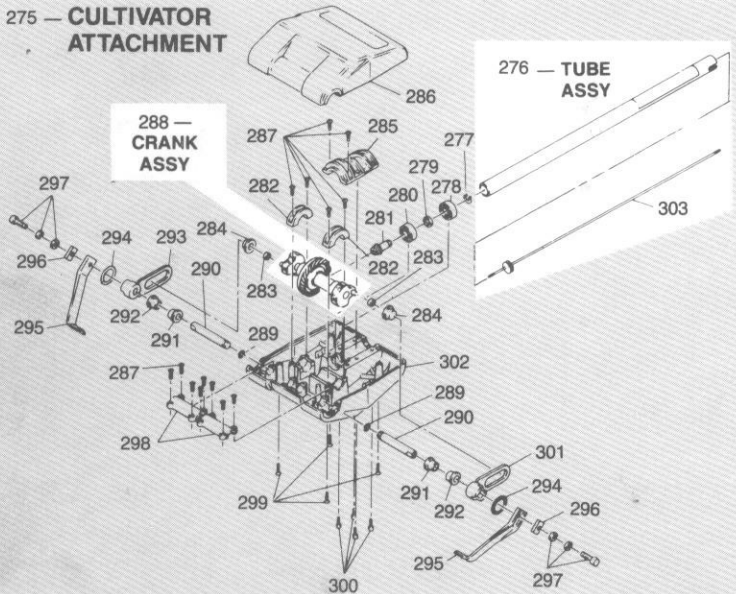
**259 — BLOWER ATTACHMENT**



**ITEM PART NUMBER DESCRIPTION**

259	2361	BLOWER ATTACHMENT
260	230604	TUBE ASSY 26.4 1/4" HOLE
261	237804	FLEX CABLE
262	041101	WASHER
263	011401	SCREW
264	201044	SCREW
265	235205	CLAMP BLOWER HOUSING
266	235201	UPPER FAN HOUSING
267	166501	ARBOR ADAPTER
268	160305	ARBOR BUSHING ASSY
269	236701	ARBOR SHAFT
270	235203	IMPELLER
271	167602	PAL NUT
272	235205	LOWER FAN HOUSING
273		
274		
275	2871	CULTIVATOR ATTACHMENT
276	280315	TUBE ASSY 22.75
277	060008	RING
278	071012	BEARING
279	236702	SPACER
280	070005	BEARING
281	236503	PINION GEAR
282	236106	CRANKSHAFT
283	071403	NEEDLE BEARING
284	235207	BEARING CAP
285	236104	SHAFT CLAMP
286	235206	UPPER COVER
287	011601	SCREW
288	230324	CRANK ASSY KIT
289	061301	WIRE RING
290	236704	ROCKER SHAFT
291	977706	BUSHING
292	977703	BUSHING
293	236502	ROCKER ARM R.H.
294	235701	"O" RING
295	97690	BLADE KIT (2 EACH)
296	236706	TINE SUPPORT
297	970307	SEMS BOLT
298	236105	CLAMP ROCKER SHAFT
299	011308	SCREW
300	011419	SCREW
301	236501	TOOL HOLDER
302	236103	LOWER HOUSING
303	237803	FLEX CABLE
304		
305		
306		
307	2381	SNOW THROWER ATTACHMENT
308	230609	TUBE ASSY 22.75 1/4" HOLE
309	012464	SCREW
310	235213	COVER B
311	239518	INSTRUCTION DECAL
312	010021	SCREW
313	237002	HOUSING
314	235503	SCRAPER BAR
315	062204	SNAP RING
316	237607	COLLAR
317	062205	SNAP RING
318	071008	BEARING
319	070006	BEARING
320	236304	PINION
321	235210	ROTOR R.H.
322	235212	COVER A
323	230338	GEAR CASE ASSY
324	030087	BOLT
325	010024	SCREW
326	012463	SCREW
327	080009	SEAL
328	070011	BEARING
329	236303	SHAFT GEAR COMP
330	237608	COLLAR
331	060005	RING
332	080010	SEAL
333	237401	GASKET
334	012462	SCREW
335	235211	ROTOR L.H.
336		
337		

**275 — CULTIVATOR ATTACHMENT**



**307 — SNOW THROWER ATTACHMENT**

