

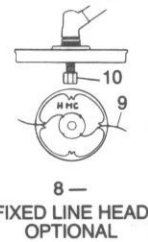
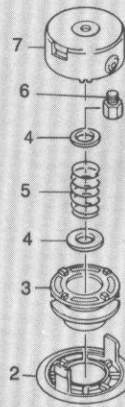
The Green Machine®

HMC, P.O. Box 560, Long Beach, CA 90801-0560
20710 So. Alameda Street, Long Beach, CA 90810

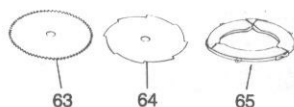
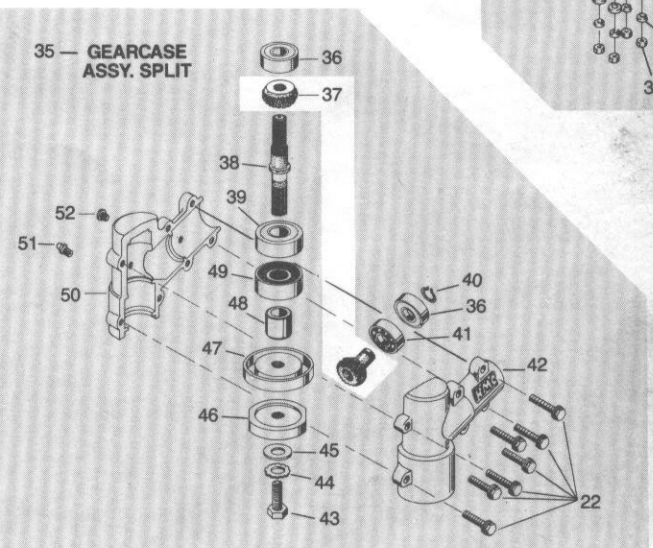
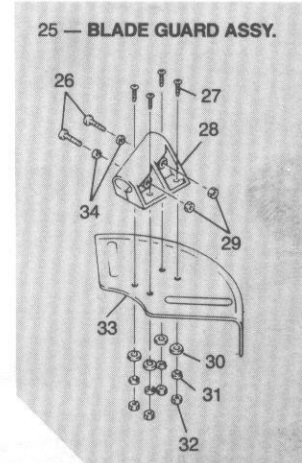
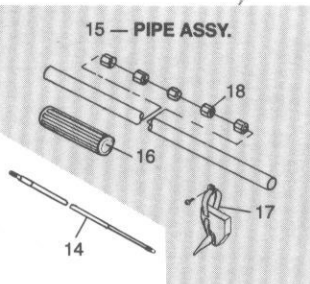
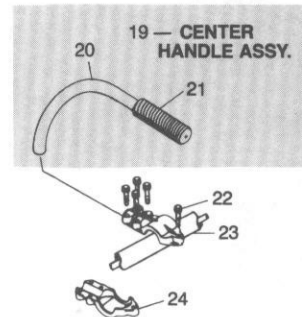
EXPLODED PARTS VIEW AND NUMERICAL PARTS LIST FOR MODEL 3000SS AND ATTACHMENT

ITEM	PART NUMBER	DESCRIPTION
1	20725	6" TFC HEAD ASSY.
2	305202	CAP
3	305203	SPOOL
4	166903	PLATE, SPRING
5	167901	SPRING
6	226701	ARBOR
7	300312	HEAD BODY
8	25250	FIXED LINE HEAD ASSY.
9	31105	GREEN LINE .080
10	325205	ARBOR BOLT
11	31095	50 FT. .095 GREEN LINE
12	31007	GREEN LINE .095 1 LB.
13	31006	GREEN LINE .095 3 LB.
14	300046	DRIVESHAFT
15	300020	PIPE COMP
16	300035	GRIP
17	300303	THROTTLE LEVER
18	300030	BUSHING
19	300334	HANDLE ASSY.
20	300135	HANDLE
21	300142	GRIP
22	030008	BOLT
23	300210	BRACKET, UPPER
24	300205	BRACKET, LOWER
25	24700	BLADE GUARD ASSY.
26	011417	SCREW
27	011418	SCREW
28	245201	BLADE GUARD BRACKET
29	051012	NUT
30	041004	WASHER
31	041101	WASHER
32	051002	NUT
33	247001	GUARD
34	041102	WASHER
35	250320	SPLIT GEARCASE ASSY.
36	070006	BEARING
37	230323	GEAR SET KIT
38	300055	SHAFT, GEAR
39	070005	BEARING
40	060007	RING
41	070007	BEARING
42	306706	GEAR CASE L.H.
43	300080	BOLT
44	040007	WASHER
45	041003	WASHER
46	300075	HOLDER B
47	300070	HOLDER A
48	300065	COLLAR
49	080003	SEAL
50	306705	GEARCASE R.H.
51	300090	FITTING ZERK
52	010002	SCREW
53	257602	PULLER
54	309951	PISTON PIN PUSHER
55	309732	FLYWHEEL HOLDER
56	309734	CARB. LEVER ADJ. TOOL
57	300185	TOOL SET
58	309925	TOOL BAG
59	190105	SPANNER
60	300190	SPANNER
61	309928	SOCKET
62	190104	SCREW DRIVER
63	92130	SAW BLADE
64	92140	BRUSH BLADE
65	94110	BLADE COVER
66	300180	HARNES
67	300150	HANGER
68	010002	SCREW
69	041101	WASHER
70	050003	NUT
71	010039	SCREW
72	040015	WASHER
73	309826	CLAMP, A
74	309827	CLAMP, B
75	010037	SCREW
76	309952	JOINT COMPLETE

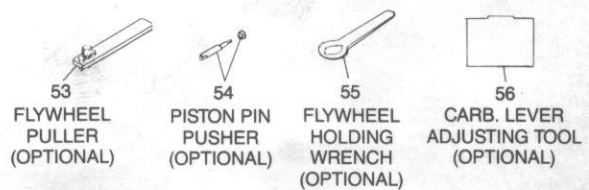
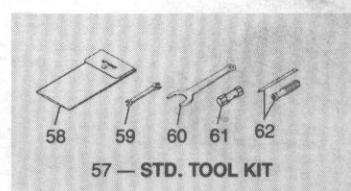
1 - 6" TFC HEAD ASSY



- 11 - 0.095 LINE ON SPOOL
- 12 - 1-LB. 0.095 LINE
- 13 - 3-LB. 0.095 LINE

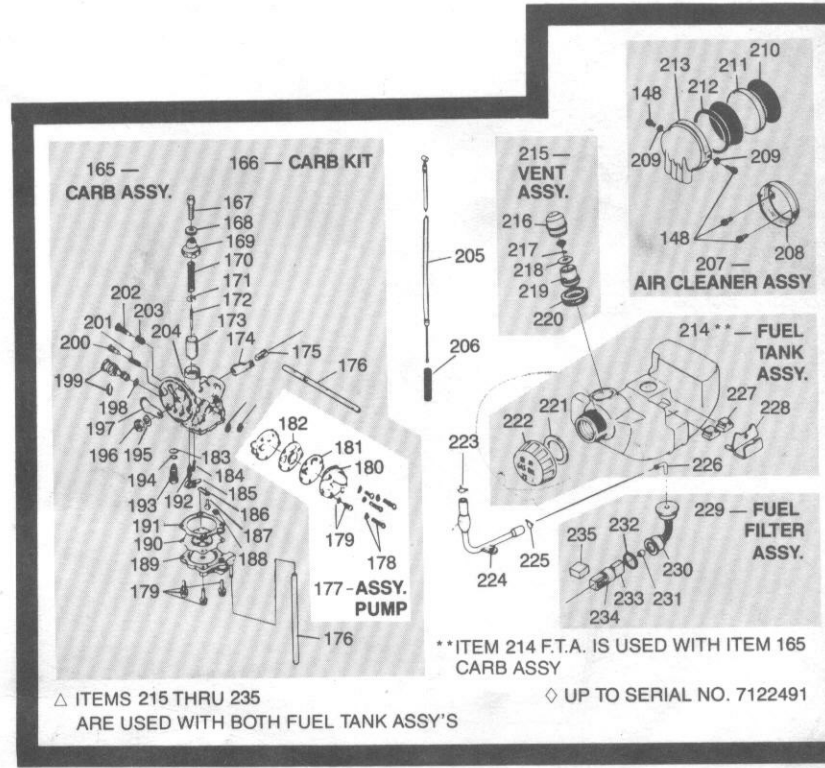
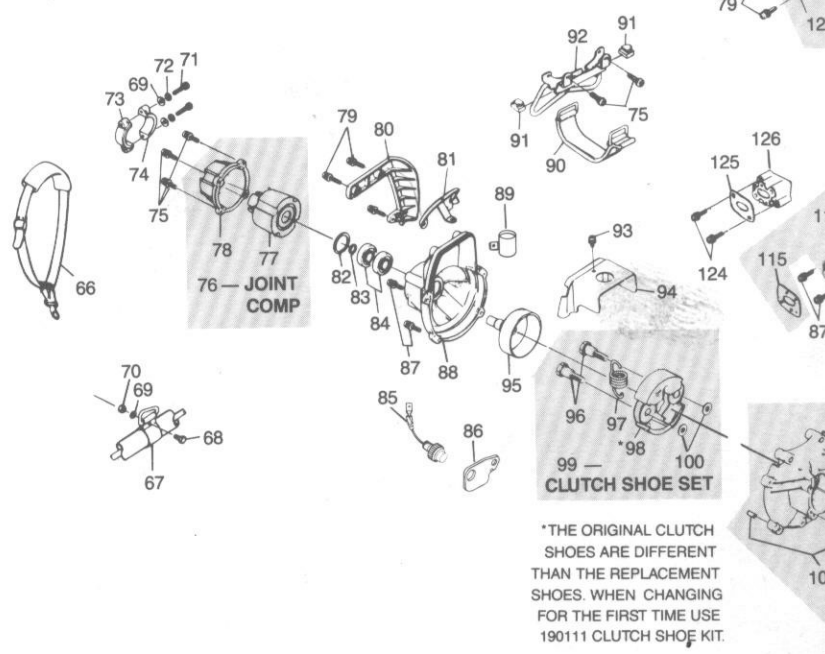


BLADE GUARD MUST BE INSTALLED WHENEVER METAL BLADES ARE USED



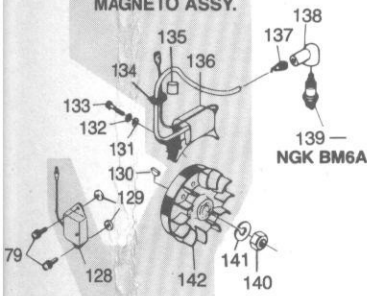
ITEM	PART NUMBER	DESCRIPTION
77	309824	JOINT
78	309825	CAP, JOINT
79	010038	SCREW
80	309821	PROTECTOR
81	309822	PROTECTOR, PLUG
82	060005	RING
83	060008	RING
84	070002	BEARING
85	650195	SWITCH ASSY.
86	307607	SWITCH BRACKET
87	010021	SCREW
88	306704	COVER
89	307103	CABLE CLAMP
90	309923	BAND
91	309921	CUSHION
92	307005	ENGINE STAND
93	010024	SCREW
94	309820	COVER
95	356901	CLUTCH DRUM
96	012448	SCREW
97	190026	CLUTCH SPRING
98	190025	CLUTCH SHOE
99	190111	CLUTCH SHOE KIT
100	040010	WASHER
101	309812	CRANKCASE ASSY.
102	309615	DOWEL PIN
103	080006	SEAL
104	070013	BEARING
105	309831	SNAP RING
106	309833	THRUST WASHER
107	309834	CRANKSHAFT ASSY.
108	309832	BEARING
109	309830	PISTON PIN
110	010005	SCREW
111	309858	PULLEY
112	050008	NUT
113	309828	PISTON
114	309620	RING
115	300293	GASKET
116	309802	INSULATOR
117	030018	BOLT
118	300296	GASKET
119	309800	CYLINDER
120	309811	INSULATOR
121	010017	SCREW
122	010020	SCREW
123	309801	GASKET
124	010102	SCREW
125	307215	GASKET
126	255203	INSULATOR-LONG
127	309838	MAGNETO ASSY.
128	309842	UNIT
129	309843	INSULATOR
130	309623	KEY
131	040024	WASHER
132	040025	WASHER
133	030021	BOLT
134	305503	GROMMET
135	306804	TUBE
136	309841	COIL
137	190035	SPRING
138	190110	CAP
139	190036	SPARK PLUG
140	050007	NUT
141	040028	WASHER
142	309839	ROTOR
143	309950	ENGINE GASKET SET
144	309805	MUFFLER COMP
145	030020	BOLT
146	040023	WASHER
147	010032	SCREW
148	010013	SCREW
149	309810	MUFFLER GUARD
150	309808	CAP, MUFFLER
151	309611	GASKET
152	309807	ARRESTOR
153	467309	STARTER
154	309856	CAP, KNOB
155	309855	KNOB
156	010031	SCREW
157	309852	PLATE FRICTION
158	309850	RATCHET
159	309853	FRICTION SPRING
160	309857	RETURN SPRING
161	309849	REEL
162	300285	SPRING-SPIRAL
163	309848	CASE
164	309854	ROPE, STARTER
165	300201	CARB. ASSY.
166	300606	CARB. KIT
167	190080	ADJUSTER

ITEM	PART NUMBER	DESCRIPTION
168	309862	NUT
169	309863	CAP
170	309864	SPRING
171	309865	RECEIVER
172	309866	JET NEEDLE
173	309867	VALVE, NEEDLE
174	309869	LEVER
175	309868	BOLT
176	309455	PIPE
177	309883	PUMP, FUEL ASSY
178	010028	SCREW
179	010027	SCREW
180	309887	COVER COMP.
181	309885	DIAPHRAGM
182	309886	PACKING
183	309945	O-RING
184	309745	SPRING

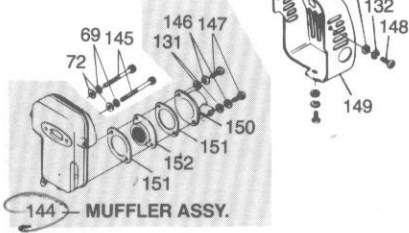


143 —
ENGINE GASKET SET

127 —
MAGNETO ASSY.



139 —
NGK BM6A

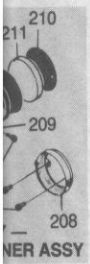


144 — MUFFLER ASSY.

*NOTE: ITEMS 115, 116,
117, 70 & 72,
ARE USED
WITH ITEM
165 CARB
ASSY. ONLY

EYE PROTECTION MUST BE
WORN WHEN OPERATING THIS
MACHINE

101 —
CRANKCASE ASSY.

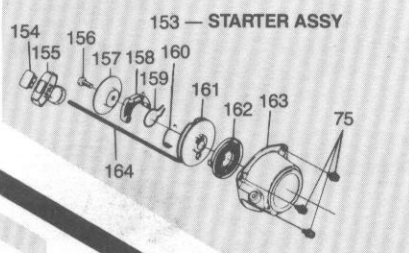


FUEL
TANK
ASSY.

FUEL
FILTER
ASSY.

ITEM 165

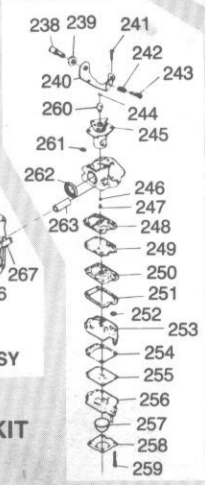
7122491



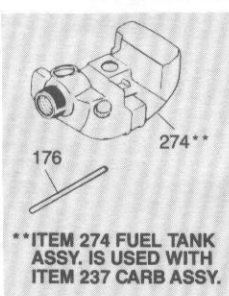
153 — STARTER ASSY

HIGH ALTITUDE JETS
272 — ABOVE 3,000 FT
271 — ABOVE 6,000 FT

237 —
CARB ASSY



236 — CARB KIT



**ITEM 274 FUEL TANK
ASSY. IS USED WITH
ITEM 237 CARB ASSY.

□ AFTER SERIAL NO. 7122492

ITEM	PART NUMBER	DESCRIPTION
185	309878	HINGE
186	309879	PIN
187	010025	SCREW
188	307205	SEAT
189	307204	COVER, DIAPHRAGM
190	307203	DIAPHRAGM
191	307202	PACKING
192	190061	VALVE
193	309876	NEEDLE JET ASSY
194	309631	O-RING
195	040021	WASHER
196	050005	NUT
197	309870	PLATE
198	309628	O-RING
199	309875	KNOB
200	309873	SCREW
201	309874	SPRING
202	309871	SCREW
203	309872	SPRING
204	309888	PACKING
205	357101	THROTTLE CABLE
206	190107	SPRING
207	309889	CLEANER ASSY.
208	309890	BODY CLEANER
209	040014	WASHER
210	309892	SCREEN
211	309891	ELEMENT
212	309893	PACKING
213	309894	COVER
214	309898	FUEL TANK ASSY.
215	309913	BREATHER ASSY.
216	309914	CAP, BREATHER
217	309917	WASHER VALVE
218	309916	RETAINER VALVE
219	309915	HOLDER VALVE
220	309919	GROMMET, BREATHER
221	309901	GASKET
222	309900	CAP ASSY.
223	307002	CLAMP A
224	309903	FUEL PIPE
225	307003	CLAMP B
226	309904	PIPE JOINT
227	305504	CUSHION
228	307004	RETAINER TANK
229	309906	FUEL FILTER ASSY.
230	309911	SUCTION PIPE
231	309910	VALVE ASSY.
232	309912	CLIP
233	309652	FILTER B
234	309907	WEIGHT
235	309908	FILTER A
236	240604	CARB. KIT
237	350202	CARB. ASSY. (WY)
238	247206	ADJUSTER, CABLE
239	247207	NUT, CABLE ADJUSTER
240	247201	BRACKET, IDLE ADJUSTER
241	307209	SCREW
242	247214	SPRING, IDLE ADJUST.
243	247213	SCREW, IDLE ADJUST.
244	247205	PLUG
245	247204	VALVE, THROTTLE
246	247211	RING
247	247212	JET, MAIN
248	307206	GASKET, PUMP
249	307207	DIA. PUMP
250	257206	GASKET
251	257204	GASKET
252	170126	SCREEN, INLET
253	300323	BODY ASSY.
254	247405	GASKET, DIAPHRAGM
255	170121	DIAPHRAGM
256	247222	BODY, PRIMER PUMP
257	247223	PUMP, PRIMER
258	247224	COVER, PRIMER PUMP
259	167212	SCREW, COVER
260	247203	SWIVEL
261	247202	RING, SWIVEL
262	247210	PACKING
263	247209	SLEEVE, MOUNTING
264	240308	CLEANER ASSY.
265	248204	SPRING
266	248205	SLEEVE
267	248206	LEVER, CHOKE
268	248201	BODY CLEANER
269	248202	FILTER
270	248203	COVER, CLEANER
271	257208	HIGH ALTITUDE JET
272	257207	HIGH ALTITUDE JET
273	257101	THROTTLE CABLE
274	350306	FUEL TANK ASSY.

