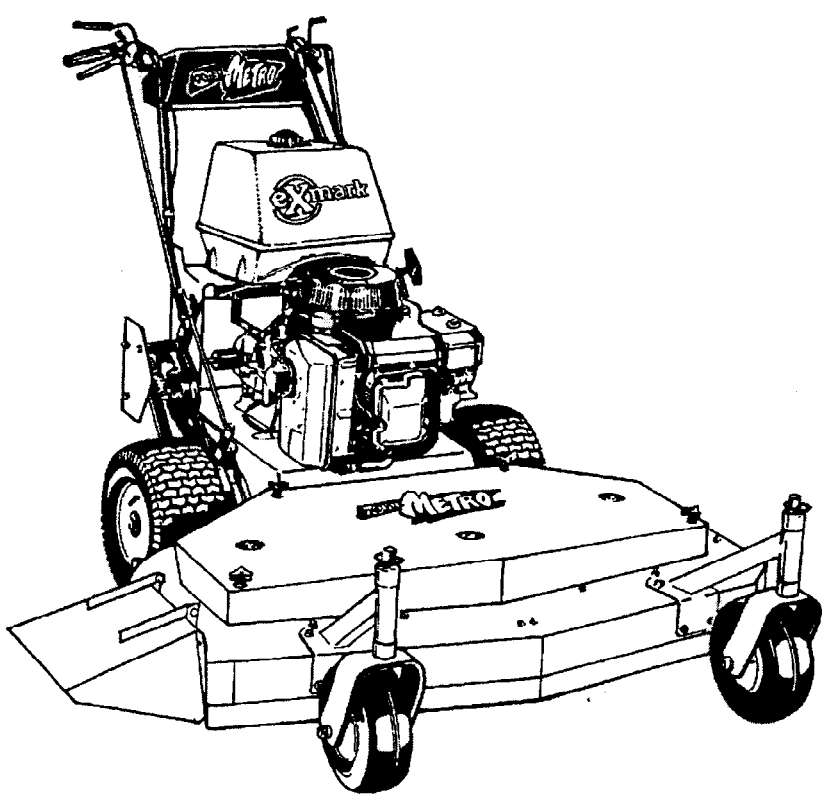


For Serial Nos.
220,000 & Higher



PARTS MANUAL

METRO™

CONGRATULATIONS on the purchase of your new Exmark mower. This product has been carefully designed and manufactured to give you a maximum amount of dependability and years of trouble-free operation.

If additional information is needed, or should you require trained mechanic service, contact your authorized Exmark equipment dealer or distributor.

If you need to order replacement parts from your dealer, always give the model number and serial number of your mower as well as the part number, description and quantity of the part needed.

The Serial No. plate is located on the top front engine frame on the right hand side of the machine.

For ease of ordering and reference, we suggest that you record the information requested in the following identification table.

Model No. _____
Serial No. _____
Engine Model No. _____
Engine Serial No. _____
Date Purchased _____

Paste Label From Literature Packet Here

EXMARK PARTS PLUS® PROGRAM

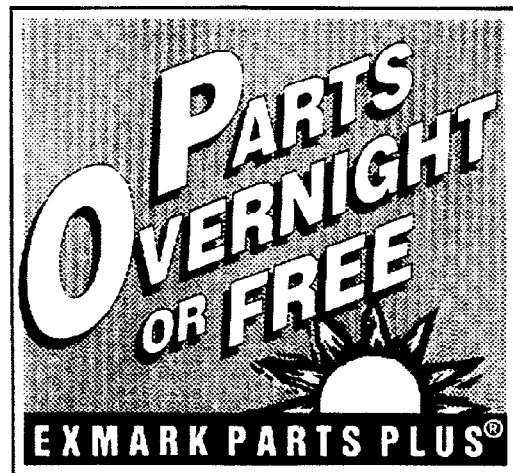
EFFECTIVE DATE: September 1, 1995

Program

If your Exmark dealer does not have the Exmark part in stock, Exmark will get the parts to the dealer the next business day or the part will be FREE* Guaranteed!!

How the Program Works

1. If dealer does not have part in stock for a "down" unit at the time of request by customer, the dealer contacts his distributor by 1:00 p.m., local time, and requests Exmark Parts Plus® shipment of six (6) line items or less.
2. Distributor ships part(s) to dealer or customer, as requested by dealer, same day, overnight UPS. Distributor bills dealer for part and freight charges where applicable.
3. If distributor does not have the part(s) in stock to satisfy Exmark Parts Plus® order, he contacts Exmark by 3:00 p.m., central time, with an Exmark Parts Plus® order of six (6) line items or less.
4. If order is received by 3:00 p.m. central time, Exmark ships part(s) direct to dealer or customer, as requested by distributor, same day, overnight UPS. Exmark bills the distributor for parts and shipping charges, where applicable.
5. The customer pays for the part and freight if it is shipped under the Exmark Parts Plus® and if it arrive in accordance to the program.
6. Who pays for the part and freight if it fails to arrive overnight in accordance to the program?
 - A. Under any circumstance the customer does not pay.
 - B. If the part does not arrive overnight due to:
 1. The dealer not submitting the Exmark Parts Plus® order to his Exmark distributor by 1:00 p.m., the dealer pays for the part and freight.
 2. The Distributor being unable to ship the part the same day or not submitting the Exmark Parts Plus® order to Exmark by 3:00 p.m., central time, the Distributor pays for the part and freight.
 3. Exmark being unable to ship the part and the Exmark parts order is received by 3:00 p.m., central time, Exmark pays for the part and freight.
 4. If the part does not arrive overnight due to the shipper (UPS), the shipper pays for the freight and Exmark pays for the part.



The following restrictions apply -- The Exmark Parts Plus® Program is available only through participating Exmark Dealers and applies only to orders submitted on this program Monday through Thursday. Parts Plus service is available only in the 48 contiguous United States. UPS has initiated a Saturday delivery program to many areas of the continental United States and can be requested for an overnight shipment on Friday to be delivered Saturday. The next day air charge, plus the Saturday delivery fee will be the responsibility of the purchaser. Exmark Mfg. will assume no responsibility for Saturday delivery shipments. To qualify, all Exmark Parts Plus® orders must be received by Exmark by 3:00 p.m., central time. Orders must be six (6) line items or less. Exclusions from the Exmark Parts Plus® Program are: Any wholegood or accessory in its entirety, engines and engine replacement parts, 5-speed Peerless transmissions and 5-speed transaxles, hydraulic or hydrostatic wheel motors, cutter decks and engine decks or any item exceeding United Parcel Service size and weight restrictions.

Due to UPS restrictions, aerosol spray paint is considered a hazardous material and cannot be shipped via UPS next day or Second Day Air.

Exmark Manufacturing stocks a limited supply of parts for transaxles, pumps and wheel motors. These parts can be ordered for Next Day Air shipment but will not be guaranteed per the Parts Plus Program.

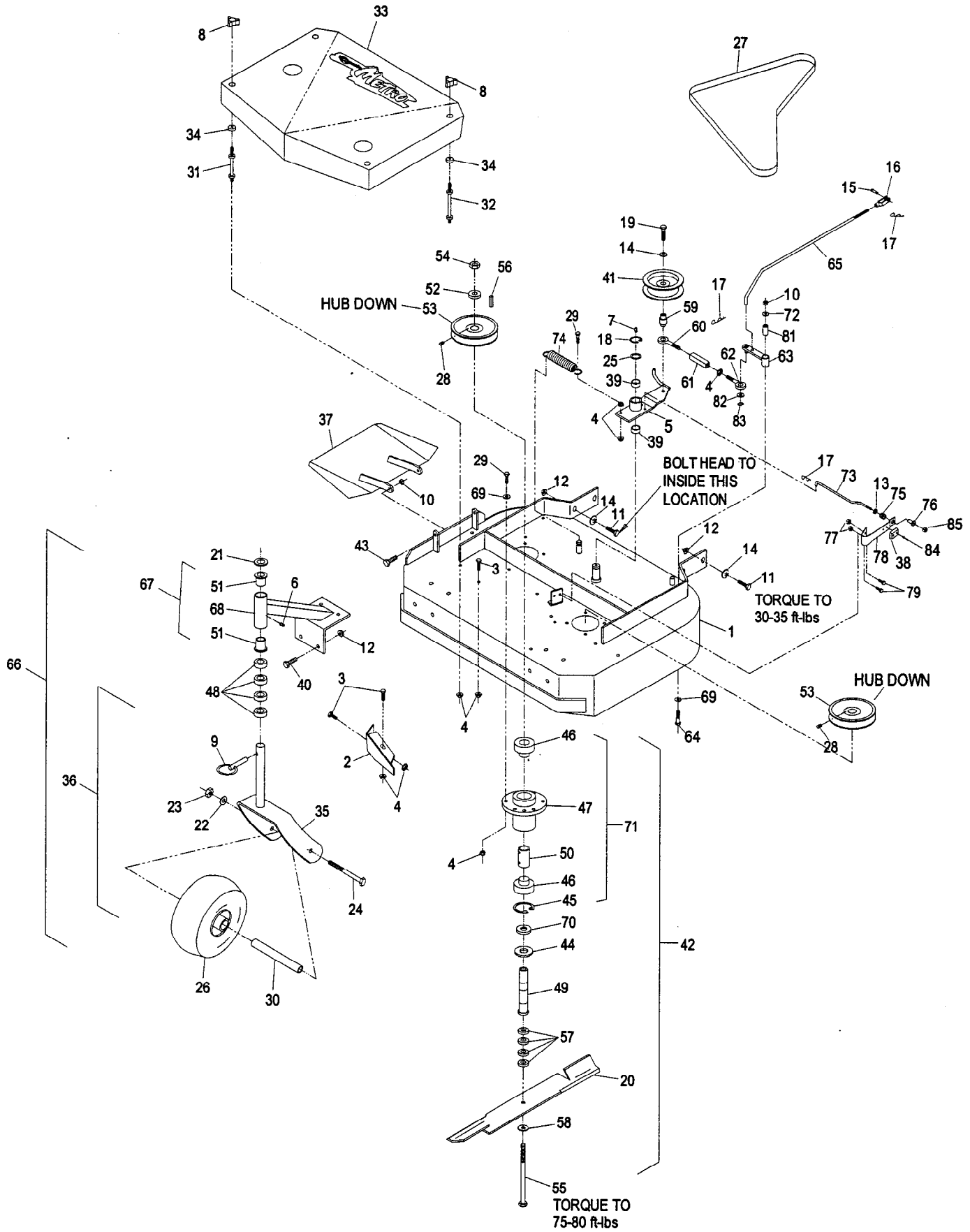


**READ OPERATOR'S MANUAL BEFORE
OPERATING OR SERVICING EXMARK EQUIPMENT.**

TABLE OF CONTENTS

<u>Description</u>	<u>Page</u>
Decals.....	12
Engine Deck Group.....	6 - 9
48" Mower Deck	4 - 5
32" and 36" Mower Deck	2 - 3
Wiring Diagrams	13
Upper Handles & Controls	10 - 11

32" and 36" MOWER DECK

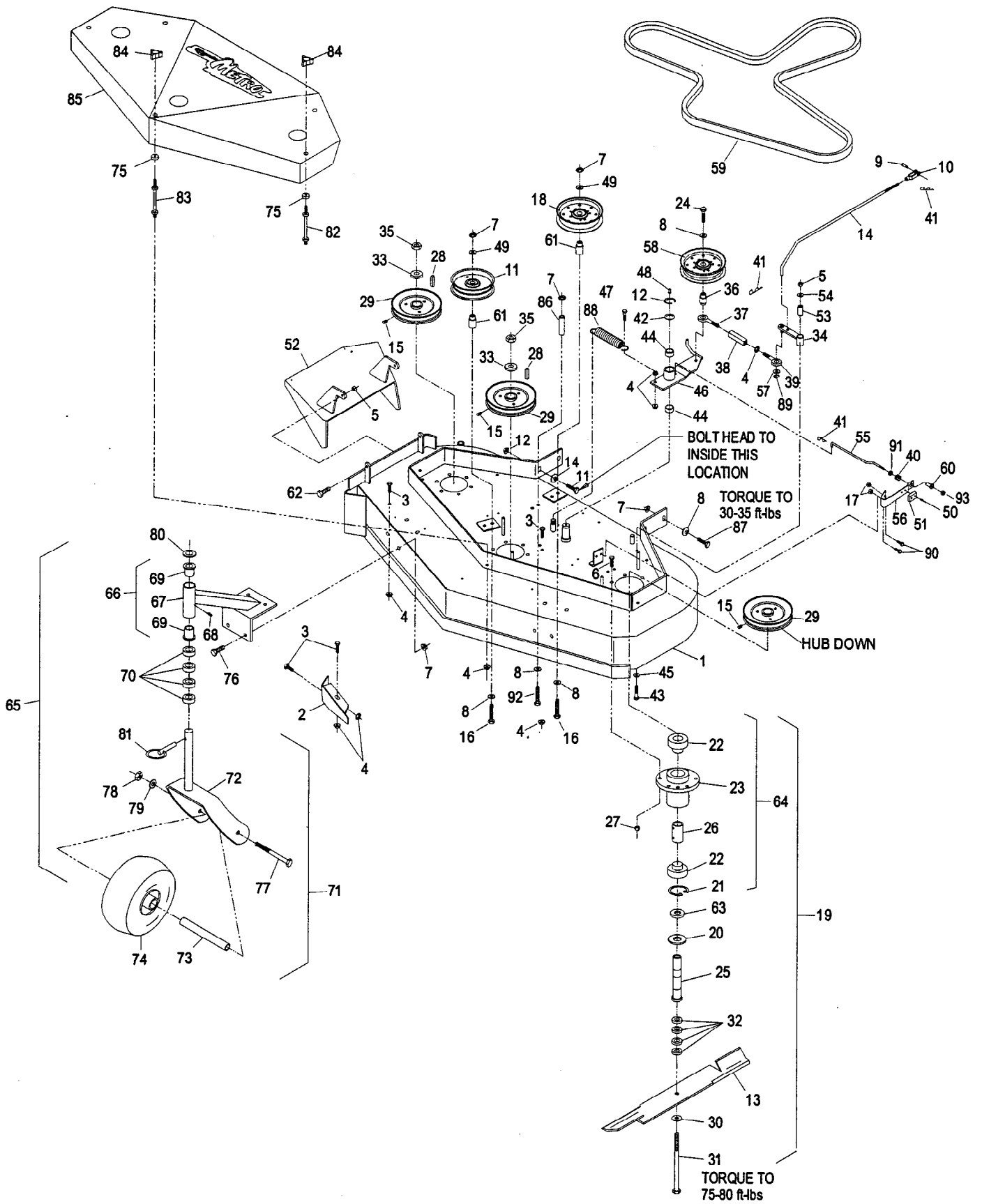


32" and 36" MOWER DECK

Ref. No.	Part No.	Description	Qty. Req'd.	Ref. No.	Part No.	Description	Qty. Req'd.
1★	304267	Front Deck w/decals & dogleg (36") ...	1	35	322145	Fork wldmnt, caster	2
	302235	Deck weldmt (36")	1	36	322154	Caster wheel assembly	2
	324387	Front Deck w/decals & dogleg (32") ...	1	37	302233	Chute	1
	322229	Deck weldmt (32")	1	38	323709	Pad, Brake	1
2	302189	Baffle wldmnt, dogleg	1	39	323729	Powder metal bearing	2
3	800270	Screw, 5/16-18 x 5/8	8	40	800290	3/8-16 x 3/4 HH capscrew	8
4	809001	5/16-18 Whizlock nut	23	41	603843	Idler pulley (heavy duty)	1
5	324408	Engagement arm w/bushing (32&36") .	1	42*	324265	Cutter Housing Complete	2
6	811001	Grease Zerk, 1/8 NPT straight	2	43	800273	5/16-18 x 1 HH capscrew	2
7	811006	Grease Zerk, 1/4-28 straight	1	44	633573	Guard, bottom	2
8	323385	Knob, belt cover	4	45	808502	Retaining ring	2
9	809020	Quick pin, 10" caster	2	46	513016	Bearing	4
10	804256	5/16-18 Nyloc hex nut	2	47	323532	Cutter housing	2
11	800294	3/8-16 x 1 1/2 HH capscrew	6	48	303314	Spacer, 10" caster	8
12	809007	3/8-16 whizlock nut	14	49	323529	Tube, spindle	2
13	323748	Ring, push-on 7/16	1	50	323528	Spacer	2
14	303327	3/8 Disc spring washer	7	51	303514	Flange , thrust bearing	4
15	808280	5/16 x 1 Clevis pin	1	52	323339	Retaining washer, sheave	2
16	303105	Yoke	1	53▽	403183	Pulley	2
17	806003	Cotter hairpin	3	54	804510	5/8-18 UNF hex nut	2
18	808505	E-Ring for .875 rd.	1	55	800861	5/8-18 x 8 HH Capscrew (Gr 5)	2
19	800296	3/8-16 x 2 capscrew	1	56	807267	Key, 1/4 x 3/16 x 1 1/4	2
20	633482	Blade, Notched air foil (36")	2	57	323539	Spacer, blade drive	8
	613251	Blade, Solid air foil (36")	2	58	513208	5/8 Spring disc washer	2
•	633484	Blade, Mulching (36")	2	59	303434	Engagement bushing	1
	633485	Blade, Low Lift (36") optional	2	60	303348	Eye bolt (left hand thread)	1
	413438	Blade, Notched air foil (32")	2	61	303236	Turnbuckle body	1
	323515	Blade, Solid air foil (32")	2	62	303238	Eye bolt (right hand thread)	1
•	403148	Blade, Mulching (32")	2	63	322235	Assist arm (32" & 36")	1
	403149	Blade, Low Lift (32") optional	2	64	800277	Screw, 5/16-18 X 2	1
21	513338	Washer, special	2	65	323303	Assist arm linkage	1
22	805008	1/2 spring lockwasher	2	66	322153	Caster/mount, complete	1
23	804509	1/2-13 Hex nut	2	67	302203	Caster wheel support w/bearings	2
24	800334	1/2-13 x 6 HH capscrew	2	68.	302194	Caster wheel support wldmnt	2
25	303352	Washer, spindle	1	69	303334	5/16 Spring disc washer	8
26	513648	Wheel & tire, complete	2	70	323533	Spacer	2
	513807	Wheel & hub	1	71	634619	Housing w/Brg, Spacer and Ring	2
	513808	Tire, 9 x 3.50-4 4-ply	1	72	805258	Wshr, flat std 5/16	1
	513809	Roller bearing	1	73	323715	Rod, brake 36"	1
	513810	Bushing	2		323718	Rod, brake 32"	1
27	323733	Drive belt (to blades) 36" Model	1	74	323071	Spring	1
	323734	Drive belt, (to blades) 32" Model	1	75	323747	Spring, compression	1
◆28	803310	Setscrew, 5/16-18 x 3/8	2	76	323746	Spacer, flanged	2
29	800274	5/16-18 x 1 1/4 HH capscrew	9	77	804255	Nut, nyloc 1/4 - 20	2
30	513547	Spacer, front caster	2	78	324372	Pad/spring assy	1
31	303537	Stud, belt shield (short)	2	79	800252	Screw, HHCap 1/4-20 X 3/4	2
32	303536	Stud, belt shield (long)	2	81	403179	Tube, pivot	1
33	324208	Shield w/decals, 36" Metro	1	82	805257	Wshr, flt SAE 5/16	1
	302213	Shield weldmt, 36" Metro	1	83	808512	E-ring	1
	324194	Shield w/decals, 32" Model	1	84	803012	Rivet, pop .188 x .375	2
	322149	Shield weldmt, 32" Model	1	85	3296-56	Nut, nyloc 1/4-20 thin	1
34	323417	Washer, belt cover mount	4				

- ◆ Use Pro-lock Nut Type (p/n 840022 .5 ml tube) on the setscrews
- Requires installation of Micro-Mulch accessory for proper mulching. Mulch kit P/N's MK322(32") or MK362(36")
- * Cutter housing complete includes sheave, washer, and nut and does not include blade.
- ★ Deck weldment does include welded in flow control baffles.
- ▽ Use antisieze on Bore of Sheaves
Exmark red touch up spray paint - P/N 850337

48" MOWER DECK

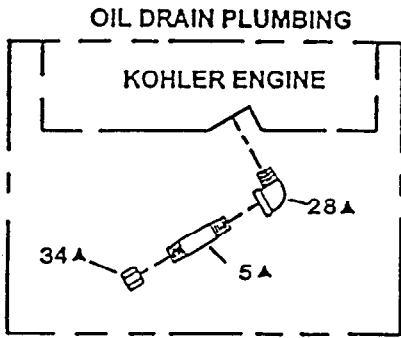
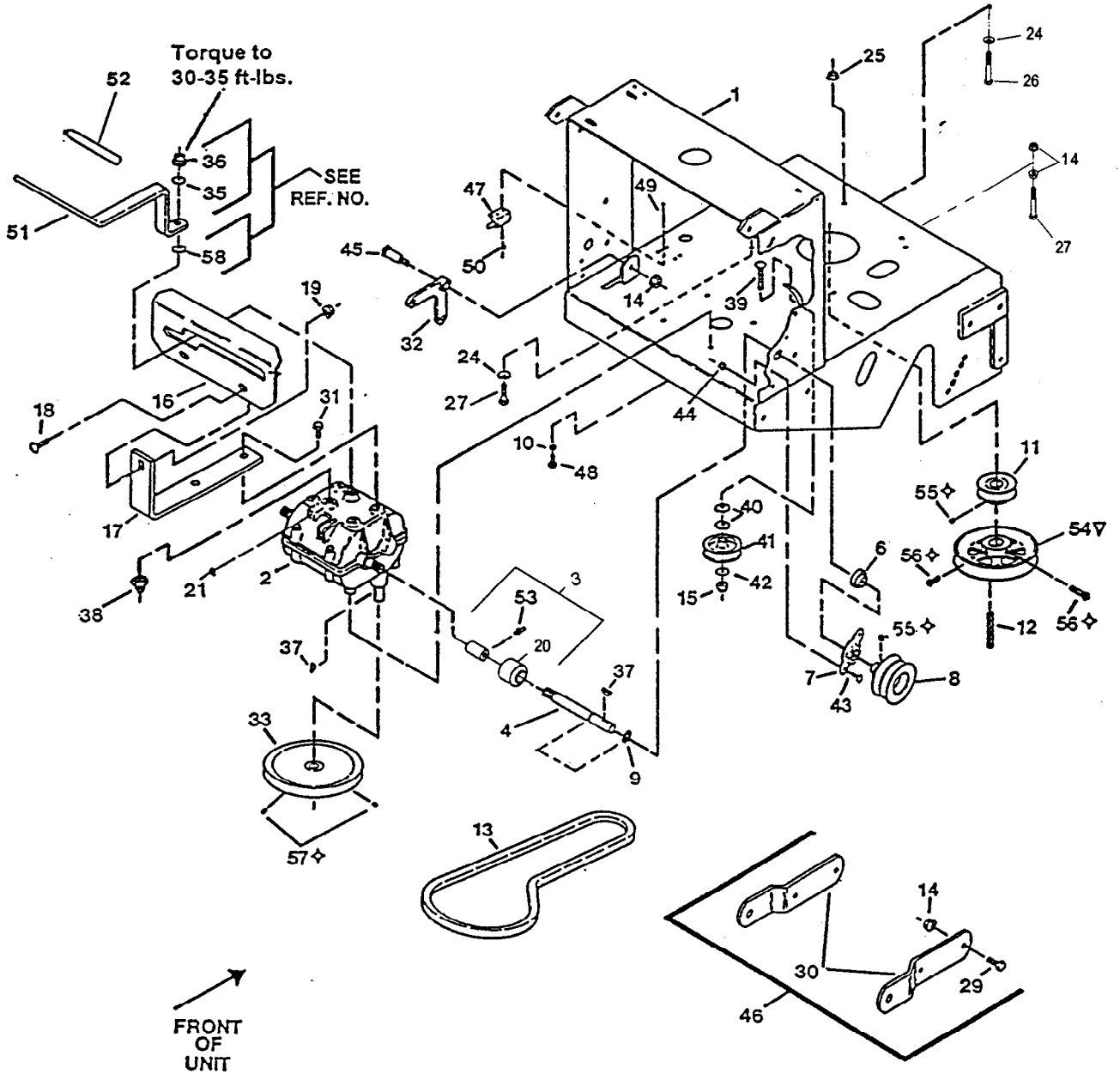


48" MOWER DECK

Ref. No.	Part No.	Description	Qty. Req'd.	Ref. No.	Part No.	Description	Qty. Req'd.
*1	404257	Front Deck w/decals & dogleg (48")...	1	48	811006	Zerk 1/4-28 strt	1
*	402108	Deck Weldmt, (48")	1	49	805259	3/8 Flatwasher.....	2
2	402107	Baffle, dogleg	1	50	803012	Rivet, pop .188 x.375	2
3	800270	5/16-18 x 5/8 HH capscrew.....	7	51	323709	Pad, brake	1
4	809001	5/16-18 Whizlock nut.....	15	52	402106	Chute wldmt	1
5	804256	5/16-18 Nyloc hex nut.....	3	53	403179	Tube, pivot	1
6	800293	3/8-16 x 1 1/4 HH capscrew	18	54	805258	Washer, Flat Std 5/16	1
7	809007	3/8-16 whizlock nut.....	17	55	323714	Rod brake 48" LH	1
8	303327	3/8 disc spring washer.....	10	56	324372	Pad/spring assy.....	1
9	808280	5/16 x 1 Clevis pin	1	57	805257	5/16 SAE flat washer.....	1
10	303105	Yoke	1	58	603843	Pulley, idler (heavy duty)	1
11	613098	Idler pulley "V"	1	59	403174	Drive belt (main deck) 48".....	1
12	808505	E-Ring for .875 rd.....	1	60	323746	Spacer, flanged	1
13	323515	Blade, Notched air foil (48").....	3	61	403184	Bushing	2
	413438	Blade, Solid air foil (48")	3	62	800273	5/16-18 x 1 HH capscrew.....	2
•	403148	Blade, mulching (48")	3	63	323533	Spacer	3
	403149	Blade, Low Lift (48") optional.....	3	64	634619	Housing w/Brg, Spacer and Ring	3
14	323303	Assist arm linkage	1	65	322153	Caster/mount, complete.....	2
◆15	803310	Setscrew, 5/16-18 x 3/8.....	3	66	302203	Caster wheel support w/bearings.....	2
16	800299	3/8-16 x 2 3/4 HH capscrew	2	67	302194	Caster wheel support wldmnt.....	2
17	804255	Nut, nyloc 1/4 - 20	2	68	811001	Grease zerk, 1/8 N.P.T.	2
18	403186	Idler pulley	1	69	303514	Flange, thrust bearing	4
19*	324265	Cutter Housing Complete	2	70	303314	Spacer, 10" caster.....	8
20	633573	Guard, bottom	3	71	322154	Caster wheel assembly.....	2
21	808502	Retaining ring	3	72	322145	Fork wldmnt, caster.....	2
22	513016	Bearing	6	73	513547	Spacer, front caster.....	2
23	323532	Cutter housing	3	74	513648	Wheel & tire, complete.....	2
24	800296	3/8-16 x 2 HH Capscrew	1		513807	Wheel & hub	2
25	323529	Cutter spindle tube	3		513808	Tire, 9 x 3.50-4 4-ply	2
26	323528	Spacer	3		513809	Roller bearing.....	2
27	804257	Nut, nylock 3/8-16	18		513810	Bushing	4
28	807267	Key, 1/4 x 3/16 x 1 1/4.....	3	75	323417	Washer, belt cover mount.....	5
29▲	403183	Pulley.....	3	76	800290	3/8-16 x 3/4 HH capscrew.....	8
30	513208	5/8 Spring disc washer	3	77	800334	1/2-13 x 6 HH capscrew.....	2
31	800861	5/8-18x8 HH Capscrew(Gr5).....	3	78	804509	1/2-13 Hex nut	2
32	323539	Spacer, blade drive	12	79	805008	1/2 spring lockwasher	2
33	323339	Washer, retainer (sheave).....	3	80	513338	Washer, special	2
34	322230	Assist arm (48").....	1	81	809020	Quick pin, 10" caster	2
35	804510	5/8-18 UNF hex nut.....	3	82	303537	Stud, belt shield (short)	2
36	303434	Engagement bushing	1	83	303536	Stud, belt shield (long)	3
37	303348	Eye bolt (left hand thread)	1	84	323385	Knob, belt cover	5
38	303236	Turnbuckle body.....	1	85	404238	Shield w/decals 48" Metro.....	1
39	303238	Eye bolt (right hand thread).....	1		402100	Shield weldmt, 48" Metro	1
40	323747	Spring, compression	1	86	403188	Spacer, belt guide	1
41	806003	Cotter hairpin.....	3	87	800294	3/8-16 x 1 1/2 HH capscrew.....	6
42	303352	Washer, spindle	1	88	323071	Spring 5sp/dr idler.....	1
43	800277	Screw, 5/16-18 X 2.....	1	89	808512	E - ring	6
44	323729	Powder metal bearing	2	90	800252	1/4-20 X 3/4 HH capscrew	2
45	303334	Washer, Sprg Disc 5/16	1	91	323748	Ring, push-on 7/16.....	1
46	402109	Engagement arm w/bushings (48") ...	1	92	800304	3/8-16 x 3 1/4 HH capscrew.....	1
47	800274	5/16-18 1 1/4 HH capscrew.....	1	93	3296-56	Nut, nyloc 1/4-20 thin	1

- ◆ Use Pro-lock Nut Type (p/n 840022 .5 ml tube) on the setscrews
- Requires installation of Micro-Mulch accessory for proper mulching. Mulch kit P/N's MK483
Exmark red touch up spray paint - P/N 850337
- * Deck weldmt does include welded in flow control baffles.
- * Cutter housing complete includes sheave, washer, and nut and does not include blade.
- ▲ Use antisieze on bore of sheaves.

ENGINE DECK GROUP



ENGINE DECK GROUP

Ref. No.	Part No.	Description	Qty. Req'd.	Ref. No.	Part No.	Description	Qty. Req'd.
1	402112	Rear deck	1	28▲	303431	St. Elbow (brass) 3/8 NPT	1
2	323500	Transmission	1	29	800292	3/8-16 x 1 HH capscrew	4
3	324340	Coupling, w/guard and zerk	2	30	323318	Hitch bracket.....	2
4	323502	Output shaft, transmission.....	2	31	809013	5/16-18 x 3/4 Tapping screw	4
5▲	323326	Nipple (galvanized) 3/8 NPT x 3.0	1	32	303186	Bell crank	1
6	323252	Shaft bearing, transmission	2	33▽	323278	Sheave, transmission drive.....	1
7	323254	Bearing flange, transmission shaft	2	34▲	543233	Cap (hex) 3/8 NPT	1
8	323257	Sheave, wheel drive, 3 1/4" (36"&48")	2	35	303327	3/8 Spring disc washer	1
	323363	Sheave, wheel drive, 3 1/4" (32").....	2	36	804264	3/8-24 Hex nylock nut	1
9	808523	Retaining ring.....	2	37	807009	3/16 x 3/4 Woodruff key.....	3
10	805005	5/16 spring lockwasher	4	38	303282	Neutral start switch	1
11•	323256	Sheave, transmission drive, 2 3/4"	1	39	807511	3/8-16 x 2 Carriage bolt, SSN.....	1
12	807264	1/4 sq. x 2 5/8 Key	1	40	805262	7/16 Std. Flatwasher	2
13	323280	Belt, transmission	1	41	323285	Idler pulley, transmission drive.....	1
14	809007	3/8-16 Whizlock nut.....	7	42	805259	3/8 SAE flatwasher	1
15	804257	3/8-16 Nyloc nut.....	1	43	800251	1/4-20 x 5/8 HH capscrew	4
16	323387	Shifter plate	1	44	804255	1/4-20 Nyloc nut.....	4
17	323389	Leg, shifter lever	2	45	603403	1/2 x 1 Shoulder bolt.....	1
18	807503	5/16-18 x 3/4 Carriage bolt	2	46	301023	Sulky Hitch Kit, Metro.....	1
19	809001	5/16-18 Whizlock nut	2	47	513051	Blade engagement switch.....	1
20	323681	Guard coupler.....	2	48	800271	5/16-18 x 3/4 HH capscrew	4
21	323526	Ball S.S detent	1	49	803028	10-24 x 5/8 Pan Hd.....	2
22	323228	Spacer, belt guide (32" and 36").....	2	50	804252	10-24 Nyloc nut.....	2
	323228	Spacer, belt guide (48")	3	51	323376	Shift lever	1
23	301024	Kit, Metro transmission	1	52	323250	Foam grip... ..	1
24	303334	5/16 disc spring washer	4	53	811006	1/4-28 Grease zerk (straight).....	2
25	809001	5/16-18 Whizlock nut.....	4	54▽	643292	Pulley, blade drive (6 1/8")	1
		(15 & 17 HP Kaw & 10.5 HP B/S Engine)				(For 36" Models)	
26*	800275	5/16-18 x 1 1/2 HH capscrew	4		403160	Pulley, blade drive (6 3/4")	1
		(15 & 17 HP Kaw & 10.5 HP B&S Engine)				(For 32" and 48" Models)	
	809072	M8-1.25 x 25mm HH capscrew	4	55◇	803310	5/16-18 x 3/8 Cuppoint setscrew	3
		(13 HP Kaw & All Kohler)		56◇	803050	5/16-18 x 3/4 Sq. setscrew	2
27	800299	3/8-16x2 3/4 HH Capscrew.....	1	57◇	803293	1/4-20 x 3/8 Cuppoint setscrew	2
				58	323379	Washer, shifter lever.....	1

◇ Use Pro-lock (Nut type) Part No. 840022 (.5ml tube) on setscrew threads

▽ Apply anti-seize compound to pulley bore (blade drive pulley and drive pulley on transmission)

▲ Use Teflon Pipe Sealant (or equivalent) on all pipe threads.

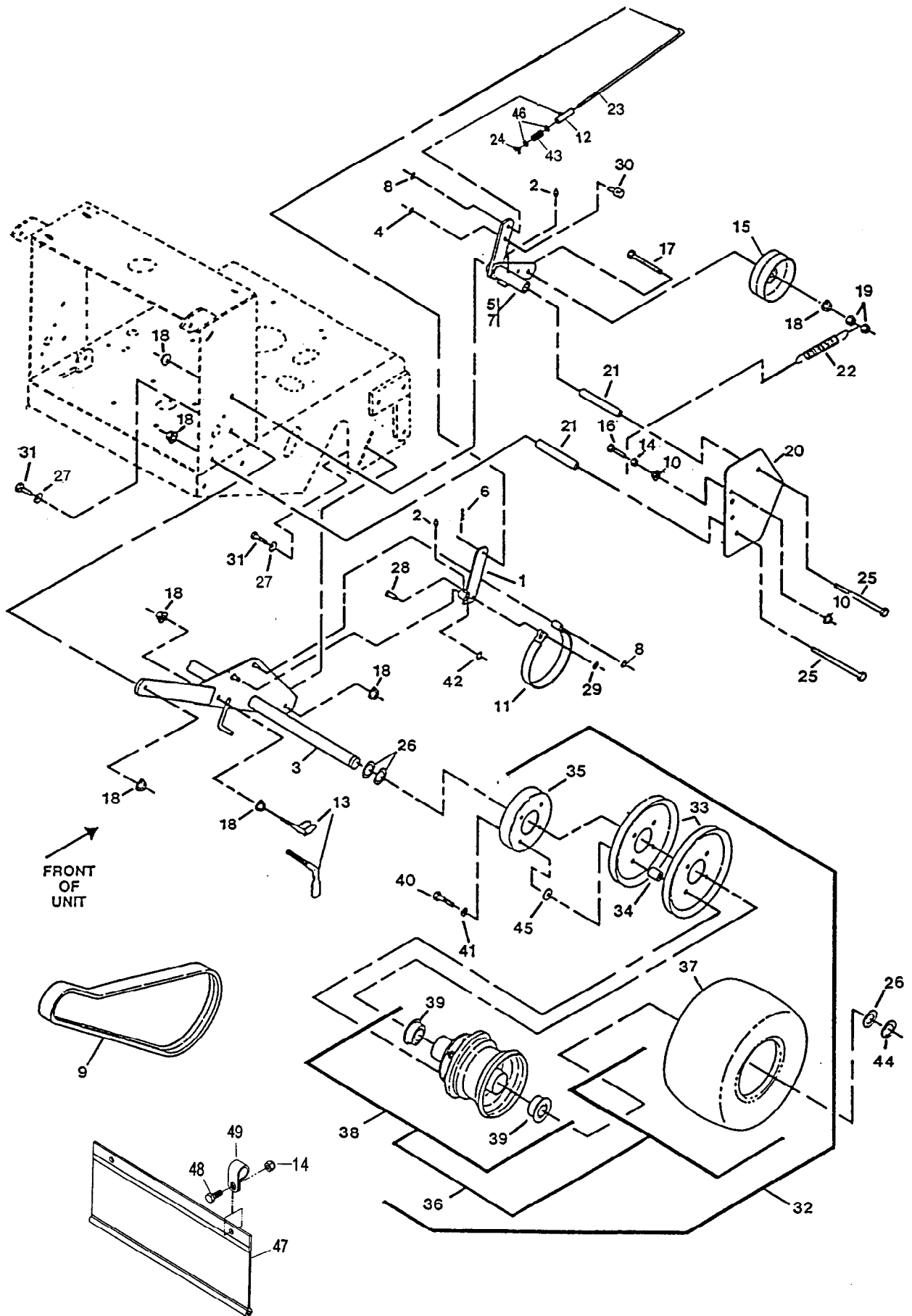
* Torque Engine Mounting Bolts: 15 & 17 HP Kaw & B & S to 15-20 ft-lbs / Kohler & 12.5 HP Kaw to 25-30 ft-lbs.

• Use Pro-lock (Retaining Type) Part No. 840023 (.5ml tube) on transmission pulley on engine.

Exmark red touch up spray paint - P/N 850337

Exmark black touch up spray paint - Gloss black

ENGINE DECK GROUP (con't)

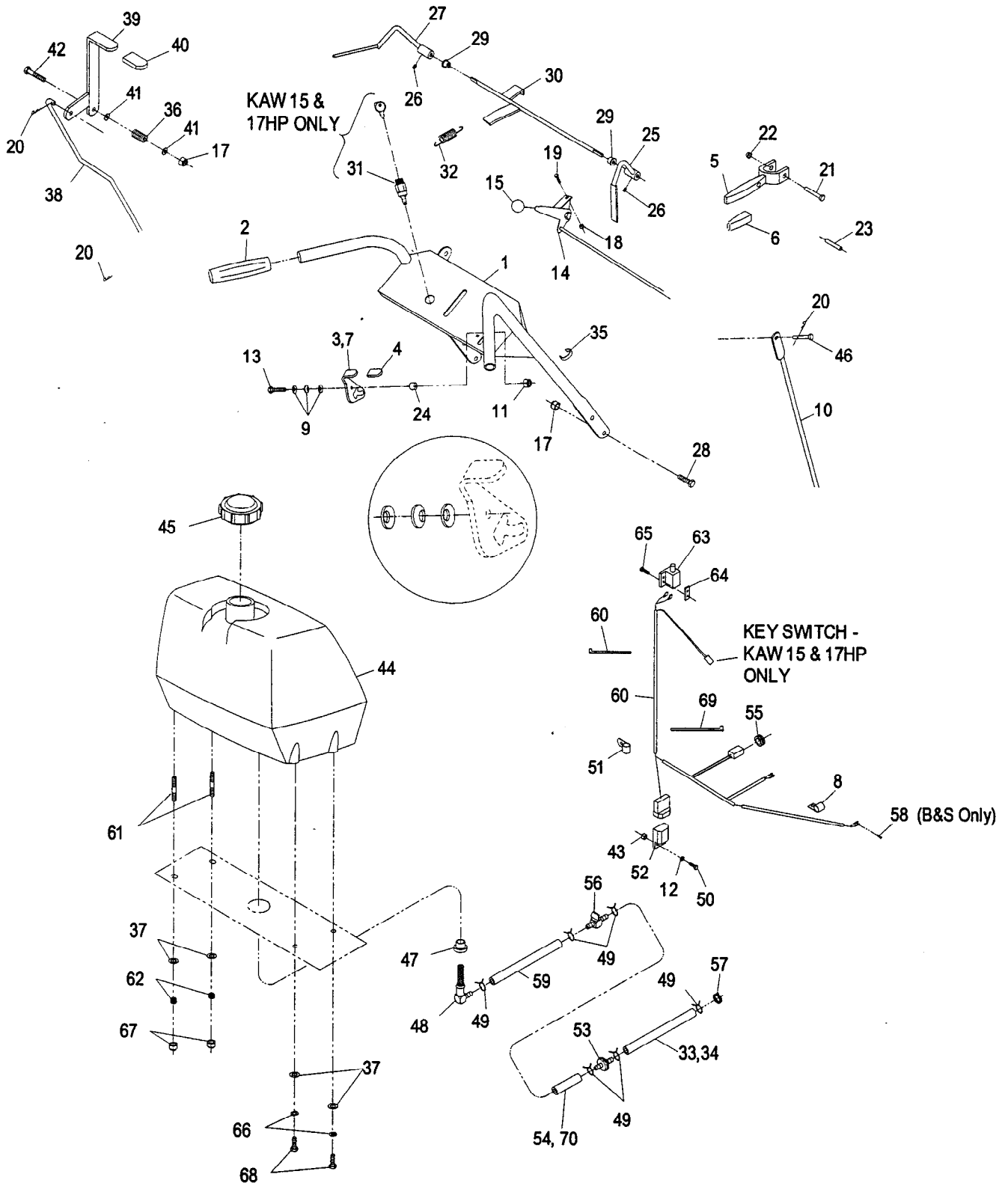


ENGINE DECK GROUP (con't)

Ref. No.	Part No.	Description	Qty. Req'd.	Ref. No.	Part No.	Description	Qty. Req'd.
1	322113	Brake arm wldmnt	2	27	303327	3/8 Disc spring washer	4
2	811006	1/4-28 Grease zerk (straight)	4	28	323307	3/8 Clevis pin	2
3	322117	Axle wldmnt (36" & 48" Models)	1	29	803051	3/8 Pushnut.....	2
	322141	Axle wldmnt (32" Model).....	1	30	323368	Swivel, short adjust.....	2
4	808520	Klipring (for .31 shaft).....	2	31	800292	3/8-16 x 1 HH capscrew	4
5	322119	Idler arm wldmnt (LH).....	1	32	324367	Drive wheel, complete (36"&48" Models)	2
6	806003	Cotter hairpin, #2.....	2		324193	Drive wheel, complete (32" Model)	2
7	322121	Idler arm wldmnt (RH)	1	33	323253	Sheave, wheel drive (36" & 48" Model)	4
8	808522	Klipring (for 3/8 shaft).....	4		323349	Sheave, wheel drive (32"Model)	2
9	323288	Belt, wheel drive (36" & 48" Models) ..	2	34	323260	Spacer, wheel shv (36" & 48" Model) ..	8
	323344	Belt, wheel drive (32" Model).....	2	35	323261	Brake drum	2
10	809001	5/16-18 Whizlock nut.....	4	36	323719	Wheel & tire, complete (36"&48" Models)	2
11	323262	Brake band	2		323346	Wheel & Tire, complete(32"Model)....	2
12	322125	Swivel wldmnt, brake linkage	2	37	323720	Tire, 13 x 6.50-6 (4-ply)(36"&48" Models)	1
13	412358	Scraper wldmnt (36" & 48" Models)....	2		323361	Tire, 13 x 5.00-6 (4-ply)(32"Model)	1
	603430	Scraper (32" Model)	2	38	323328	Wheel & hub w/brgs(36"&48" Models)	1
14	804256	5/16-18 Nyloc nut	4		323360	Wheel & hub w/bearings(32" Model) .	1
15	323277	Idler pulley, wheel drive (36"&48" Models)	2	39	323329	Bearing, flanged.....	4
	323352	Idler pulley, wheel drive (32" Model)...	2	40	800273	5/16-18 x 1 HH capscrew (32").....	8
16	800274	5/16-18 x 1 1/4 HH capscrew	2		800274	5/16-18 x 1 1/4 HH capscrew(36"&48")	8
17	800032	3/8-16 x 3 HH Tap bolt	2	41	805005	5/16 Spring washer.....	8
18	809007	3/8-16 Whizlock nut.....	14	42	808501	E-Ring (for 1/2" shaft)	2
19	804257	3/8-16 Nyloc nut	4	43	323245	Spring, Compression	2
20	323287	Shield, wheel drive	2	44	808519	E-Ring (for 1" shaft).....	2
21	323283	Spacer	4	45	373034	Swivel washer (32" Model only)	4
22	603402	Drive spring	2	46	805257	5/16 SAE Flat washer	4
23	323548	Brake rod.....	2	47	323607	Shield, Trailing	1
24	513959	5/16-18 Nyloc wingnut.....	2	48	800271	5/16-18 x 3/4 HH capscrew	2
25	800306	3/8-16 x 5 HH capscrew.....	4	49	323612	R-Clamp.....	1
26	523157	Spacer, wheel (14 Ga.)	As Req'd.				
	543436	Spacer, wheel (18 Ga.)	As Req'd.				

Exmark black touch up spray paint - Gloss black

UPPER HANDLES & CONTROLS



UPPER HANDLES & CONTROLS

Ref. No.	Part No.	Description	Qty. Req'd.	Ref. No.	Part No.	Description	Qty. Req'd.
1	322227	Handle wldmnt	1	37	805257	Washer, 5/16 SAE.....	1
2	303097	Handle grip.....	2	38	323298	Linkage, blade drive	1
3*	324279	Latch w/grip (left).....	1	39	322157	Engagement lever, blade w/grip.....	1
4	303019	Grip, latch	2	40	303020	Grip, lever.....	1
5	302006	Drive lever w/grip	2	41	805260	3/8 Std. flatwasher.....	2
6	303021	Grip, drive lever	2	42	800296	3/8-16 x 2 HH capscrew.....	1
7	324280	Latch w/grip (right)	1	43	804255	1/4-20 Nyloc nut	1
8	323229	Clip, 3/8 Loom (Kaw).....	2	44	413179	Tank, gas ..	1
9	303435	Washer, 1/4 disc spring	6	45	513508	Cap, fuel tank	1
10	323359	Linkage, wheel drive	2	46	808286	Clevis pin.....	2
11	804255	1/4-20 Nyloc nut	2	47	513645	Bushing, fuel tank.....	1
12	805256	1/4 STD. Flatwasher	1	48	543277	Elbow, 90° ..	1
13	800259	1/4-20 x 2 1/4 HH capscrew.....	2	49	303077	Clamp, fuel line (15&17HP Kaw, B&S)	4
14	323322	Throttle cable (12.5 HP Kaw & Kohler)	1		303077	Clamp, fuel line (12.5 HP Kaw)	5
	323129	Throttle cable (B&S).....	1		303077	Clamp, fuel line (Kohler).....	6
	413428	Throttle cable (15 & 17 HP Kaw)	1	50	800252	1/4-20 x 3/4 HH capscrew.....	1
15	513592	Knob, (red ball).....	1	51	323229	Clip, 3/8 Loom (Kohler & B&S).....	1
16	303287	Plastic tie, 5 1/2" (Kaw)	5	52♦	323430	Interlock, OPC.....	1
	303287	Plastic tie, 5 1/2" (Kohler & B&S)	3	53	303197	Gas filter (Kawasaki & Kohler)	1
17	804257	3/8-16 Nyloc nut.....	5	54	603776	Fuel line, 2.5" (12.5 HP Kaw & Kohler)	1
18	804252	10-24 Nyloc hex nut	2	55	543296	Grommet,	1
19	807513	10-24 x 1/2 Carriage bolt.....	2	56	603770	Fuel valve.....	1
20	806003	Hairpin cotter.....	4	57	303308	Clamp, fuel line (Kawasaki).....	1
21	808250	3/16 x 1 3/4 Clevis pin.....	2	58	802002	Screw thdct RHS 10-32x1/2 (B&S) ...	1
22	803001	3/16 Palnut	2	59	603955	Fuel line, 6" (Kaw, Kohler, & B&S)	1
23	806340	5/16 x 1 Rollpin	2	60	323511	Wiring harness (12.5 HP Kaw).....	1
24	323549	Spacer	4		323512	Wiring harness (Kohler)	1
25♦♦	412185	Lever, OPC (RH).....	1		323510	Wiring harness (B&S).....	1
26♦	803322	5/16-24 Setscrew.....	2		323740	Wiring harness (15&17 HP Kaw)	1
27♦♦	412183	Lever, OPC (LH)	1	61•	633023	Stud, gas tank	2
28	800292	3/8-16 x 1 HH capscrew.....	4	62	633349	Spring, gas tank	2
29	303365	Nylon bushing.....	2	63	513051	Switch	1
30	322192	Connecting rod.....	1	64	633181	Plate, tapped	1
31	403121	Switch, key (15&17 HP Kaw)	1	65	803028	Screw	2
	603511	Key, Ignition (15&17 HP Kaw).....	1	66	805005	Washer Lock 5/16.....	2
32	303363	Actuator spring.....	1	67	804267	Nut, Nyloc 5/16-18.....	2
33	303022	Fuel line, 8.5" (Kawasaki).....	1	68	800271	Screw, 5/16-18X3/4.....	2
34	603954	Fuel line, 13.75" (Kohler).....	1	69	303335	Plastic tie, large	2
35	303088	Cable clip	1	70	303022	Fuel line, 8.5 (B&S)	1
36	303160	Compression spring.....	1				

♦ Use Pro-lock (Nut type) Part No. 840022 (.5 ml tube) on setscrew threads.

• Use Pro-lock (Retaining) Part No. 840023 (.5 ml tube) on inside of OPC hub (See Operator's Manual) & on fuel tank studs

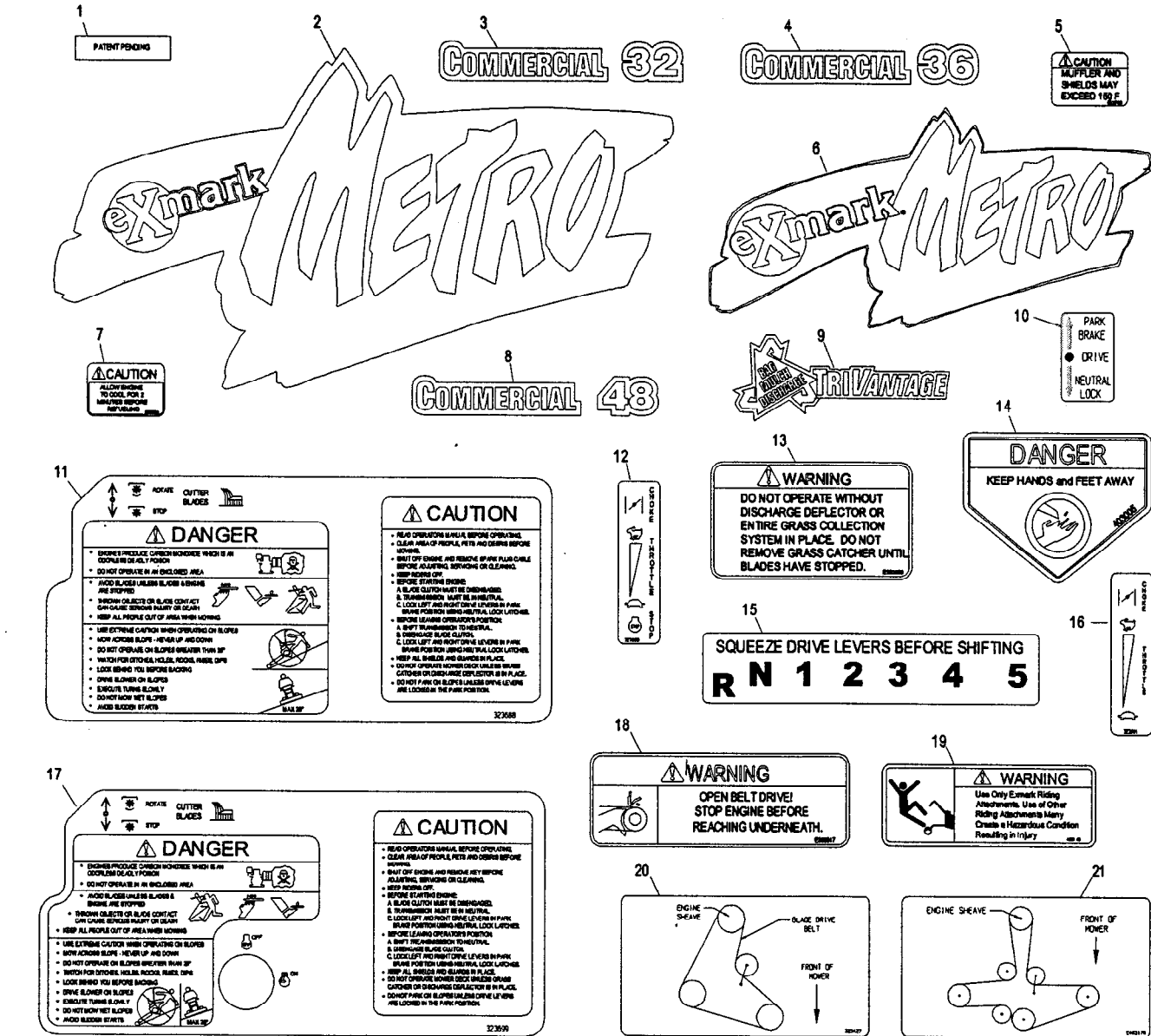
♦ OPC refers to Operator Presence Control.

* Not illustrated.

NOTE: Use dielectric grease on all electrical connections.

Exmark black touch up spray paint - Gloss black

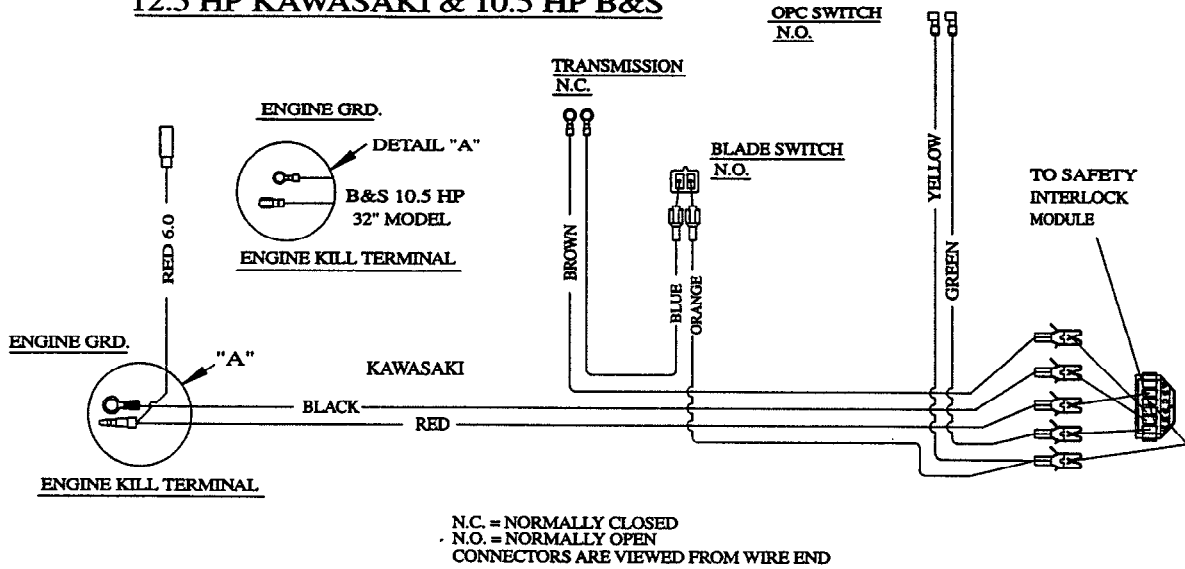
DECALS



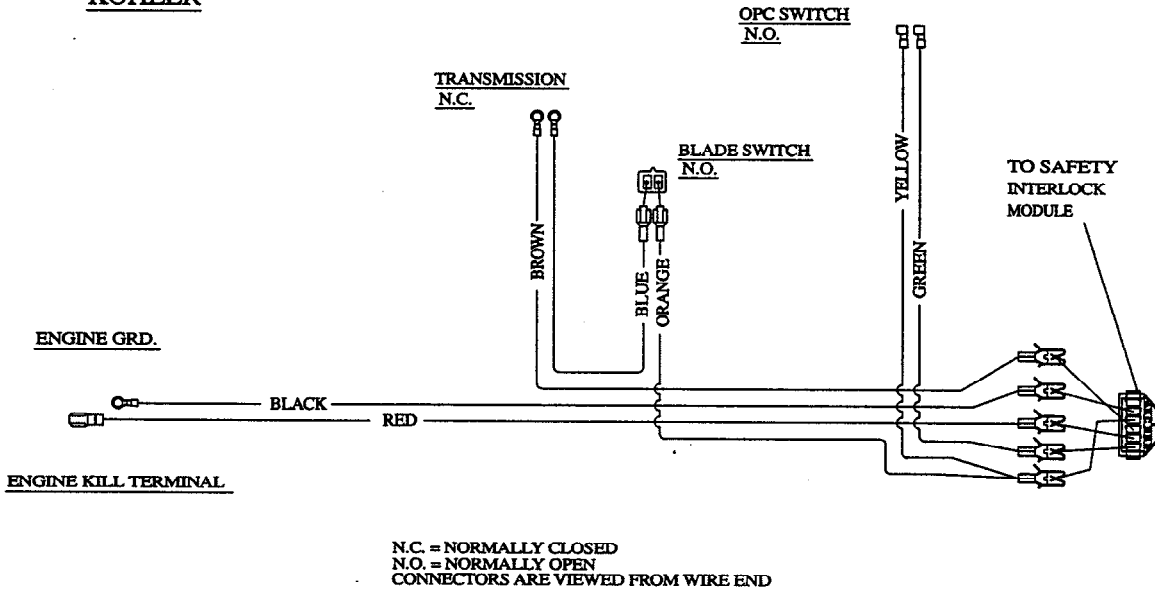
Ref. No.	Part No.	Description	Qty. Req'd.	Ref. No.	Part No.	Description	Qty. Req'd.
1	373066	Decal, Patent Pending	1	13	303508	Decal, Discharge Warning	1
2	323412	Decal, Large Metro	1	14	403005	Danger, Label (48")	2
3	323410	Decal, Commercial 32"	1	14	403005	Danger, Label (32" & 36")	1
4	323411	Decal, Commercial 36"	1	15	303518	Decal, Shifter	1
5	513746	Decal, Muffler	1	16	323691	Decal, Throttle (15&17HP Kaw)	1
6	323312	Decal, Small Metro	1	17	323699	Decal, Console (15&17HP Kaw)	1
7	303293	Decal, 2 Minute Cool	1	18	303517	Decal, Belt Drive	1
8	403131	Decal, Commercial 48"	1	19	403143	Decal, Sulky Warning	1
9	303520	Decal, TriVantage	1	20	323427	Decal, Belt Routing (32" & 36")	1
10	323550	Decal, Neutral/Brake	2	21	403170	Decal, Belt Routing (48")	1
11	323688	Decal, Console (12.5 Kaw, Koh, B&S)	1		321016	Decal, Kit	
12	323689	Decal, Throttle (12.5 Kaw, Koh, B&S)	1				

WIRING DIAGRAMS

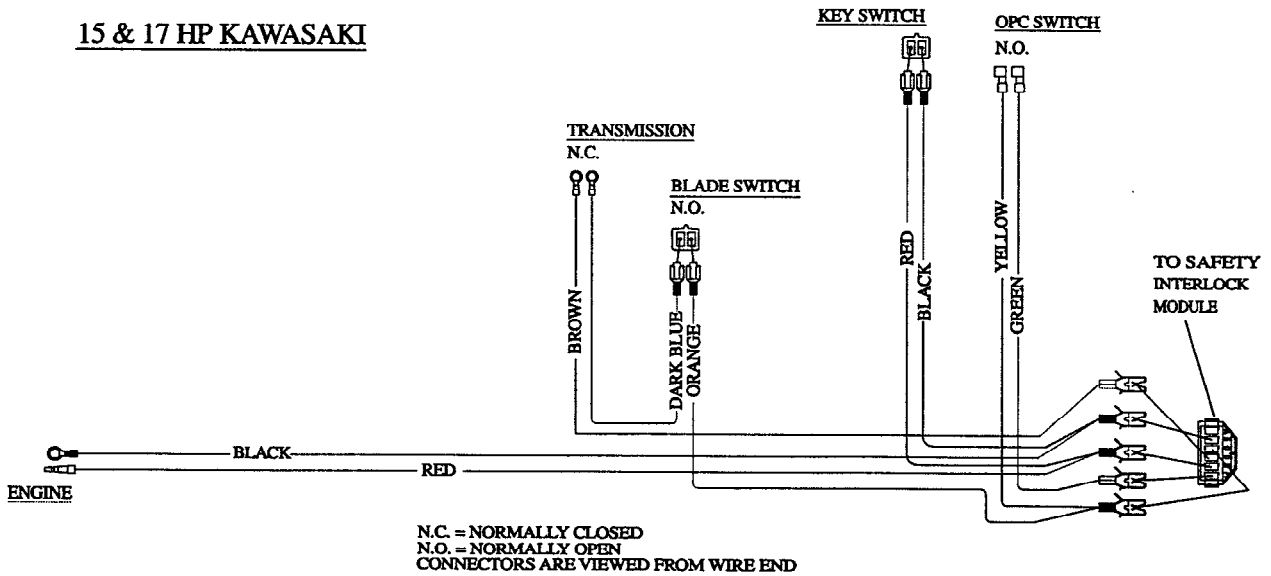
12.5 HP KAWASAKI & 10.5 HP B&S



KOHLER



15 & 17 HP KAWASAKI



SEE EXMARK'S COMPLETE
LINE OF PRODUCTS FOR TURF CARE

LAZER Z™

LAZER Z™ HP

TURF RANGER®

TURF TRACER®

TURF TRACER® HP

VIKING HYDRO

METRO™

METRO™ HP

SELF STEERING SULKY

GRASS CATCHER

MICRO-MULCH™ ACCESSORY

©1997, 1998, 1999
EXMARK MFG. CO. INC.
INDUSTRIAL PARK BOX 808
BEATRICE, NE 68310
ALL RIGHTS RESERVED

PART NO. 850652 Rev B.
(402) 223-6300
FAX (402) 223-5489
PRINTED IN U.S.A.

