

## 310700 to 310799

# Illustrated Parts List

## Model Series

### 310700 to 310799

#### TYPE NUMBERS

0101, 0102, 0112,  
0113, 0114, 0130,  
0131, 0132, 0135,  
0136.

#### TO FIND

#### THE CORRECT NUMBER OF THE PART YOU NEED: FOLLOW THE INSTRUCTIONS BELOW

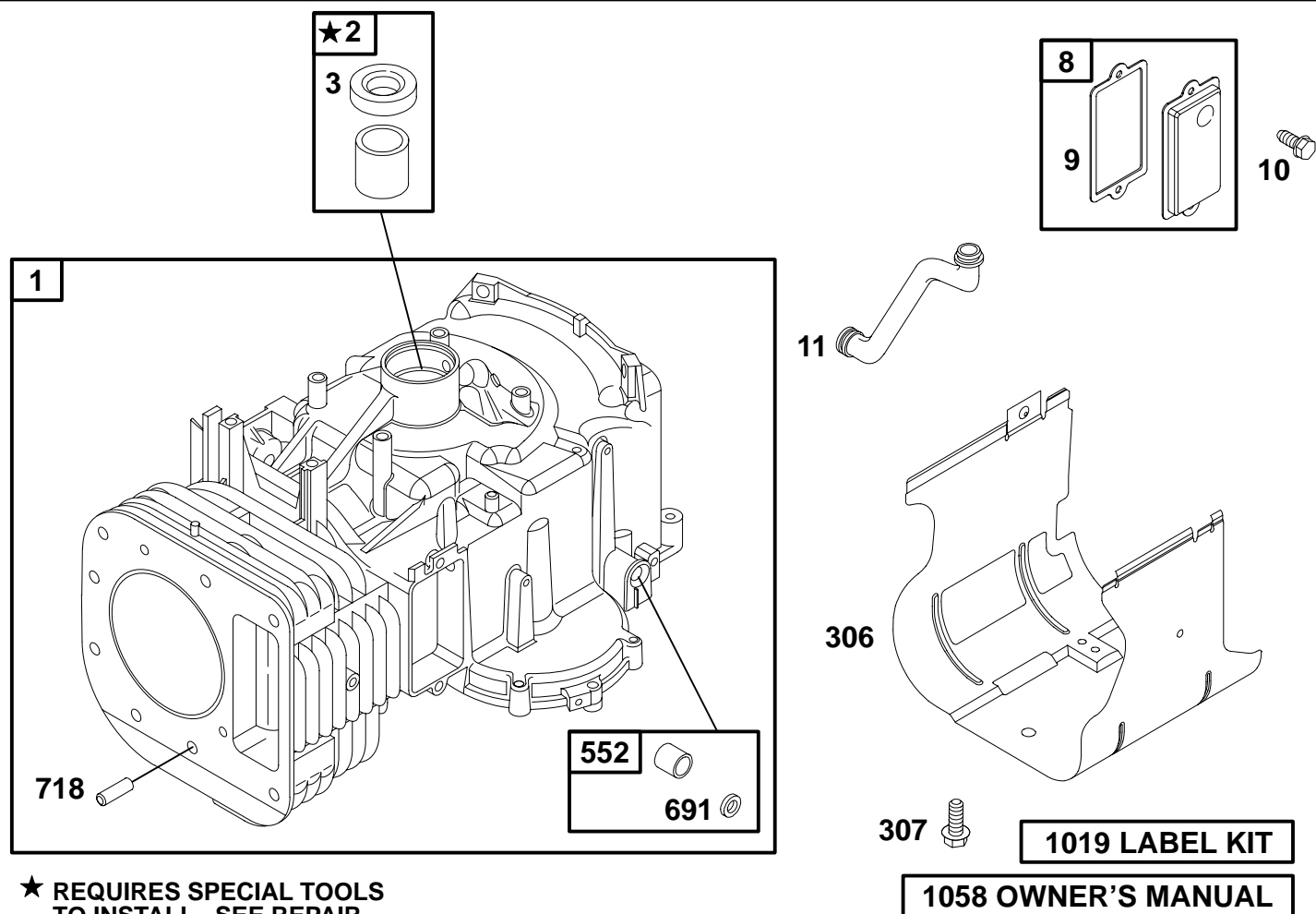
- A. Refer to Engine Model, Type and Code Number that is stamped on the blower housing of engine. Engine type numbers such as 0123 01 are listed only as 0123 in most instances. The two digits (01 or 02, etc.) to the right of the space may be required for more accurate parts identification in some instances. Select the Illustrated Parts List covering the correct Model Series and Type Number.
- B. Refer to the Illustrations and compare the original part with Illustration. The number next to the illustration is the Reference Number. Assemblies include all parts shown in frames. All parts shown in assembly frames having individual reference numbers can be purchased separately.
- C. After the Reference Number has been identified, refer to the Numerical text, where Reference and Primary Part Number are listed. **THE PRIMARY PART IS USED ON ALL TYPE NUMBERS EXCEPT THOSE TYPE NUMBERS UNDER "NOTE."**
- D. If a "Note" appears below the Primary Part Number, it means that this part differs from the Primary Part for certain types. If your Type number is listed under "Note," order the part referred to at the "Note."
- E. If your Engine Type Number does not appear after any part number listed under "Note," use the Primary Part Number.
- F. For Engine Type Numbers not covered by this book, check other Parts Lists having the same engine model or contact your source of supply.

PRINTED IN U.S.A.



COPYRIGHT by BRIGGS & STRATTON CORPORATION  
All rights reserved. No part of this material may be reproduced or transmitted, in any form or by any means, electronic or mechanical, including photocopying, recording or by any information storage and retrieval system, without permission in writing from Briggs & Stratton Corporation.

# 310700 to 310799



REF. NO.	PART NO.	DESCRIPTION	REF. NO.	PART NO.	DESCRIPTION	REF. NO.	PART NO.	DESCRIPTION
<b>1</b>	<b>690156</b>	Cylinder Assembly	<b>9</b>	<b>★27803</b>	Gasket-Breather	<b>552</b>	<b>491986</b>	Bushing-Governor Crank
<b>2</b>	<b>399265</b>	Kit-Bushing/Seal (Magneto Side)	<b>10</b>	<b>691666</b>	Screw (Breather Assembly)	<b>691</b>	<b>★491323</b>	Seal-Governor Shaft
<b>3</b>	<b>★391086</b>	Seal-Oil (Magneto Side)	<b>11</b>	<b>691328</b>	Tube-Breather	<b>718</b>	<b>230192</b>	Pin-Locating
<b>8</b>	<b>495735</b>	Breather Assembly (Standard)	<b>306</b>	<b>690499</b>	Shield-Cylinder	<b>1019</b>	<b>690180</b>	Kit-Label
			<b>307</b>	<b>94930</b>	Screw (Cylinder Shield)	<b>1058</b>	<b>274789</b>	Owner's Manual (Emission Engines)

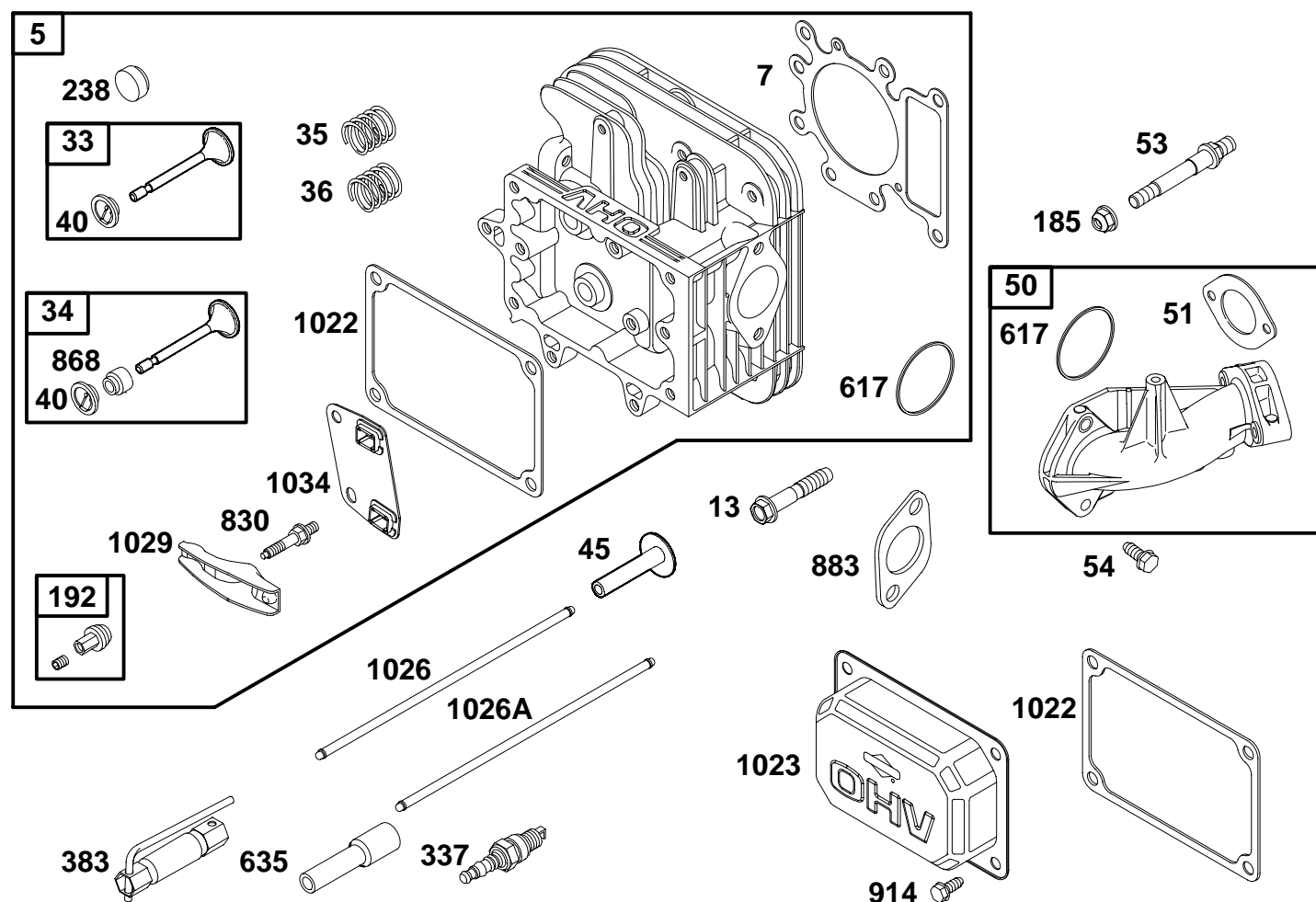
★ Included in Engine Gasket Set-Ref. No. 358.

△ Included in Valve Gasket Set-Ref. No. 1095.

■ Included in All Kits ★△◆

● Included in Carburetor Overhaul Kit-Ref. No. 121, 121A.

◆ Included in Carburetor Gasket Set-Ref. No. 977, 977A.



REF. NO.	PART NO.	DESCRIPTION	REF. NO.	PART NO.	DESCRIPTION	REF. NO.	PART NO.	DESCRIPTION
5	690188	Head-Cylinder	53	690227	Stud (Carburetor)	830	691095	Stud-Rocker Arm
7	Δ*692410	Gasket-Cylinder Head	54	691148	Screw (Intake Manifold)	868	Δ*690968	Seal-Valve
13	690360	Screw (Cylinder Head)	185	94010	Nut (Air Cleaner Base)	883	★272293	Gasket-Exhaust
33	495856	Valve-Exhaust	192	492160	Adjuster-Rocker Arm	914	690960	Screw (Rocker Arm Cover)
34	495857	Valve-Intake	238	262836	Cap-Valve	1022	Δ*272475	Gasket-Rocker Cover
35	691279	Spring-Valve (Intake)	337	491055	Sparkplug (Basic, RC12YC))	1023	691192	Cover-Rocker Arm
36	691279	Spring-Valve (Exhaust)	383	89838	Wrench-Sparkplug	1026	494432	Rod-Push (Intake)
40	224641	Retainer-Valve	617	Δ*692138	O-Ring Seal (Intake Manifold)	1026A	495136	Rod-Push (Exhaust)
45	690564	Tappet-Valve	635	280872	Boot-Sparkplug	1029	224554	Arm-Rocker
50	690193	Manifold-Intake				1034	690822	Guide-Push Rod
51	■273650	Gasket-Intake						

★ Included in Engine Gasket Set-Ref. No. 358.

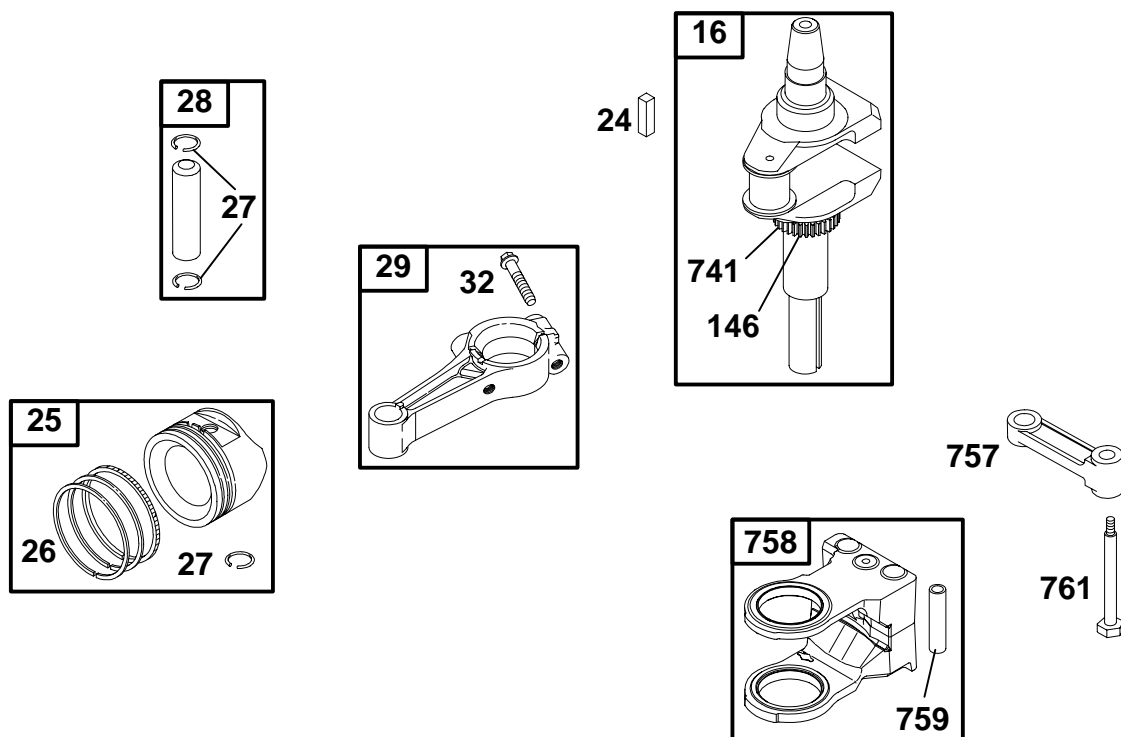
Δ Included in Valve Gasket Set-Ref. No. 1095.

■ Included in All Kits ★Δ◆

● Included in Carburetor Overhaul Kit-Ref. No. 121, 121A.

◆ Included in Carburetor Gasket Set-Ref. No. 977, 977A.

# 310700 to 310799



REF. NO.	PART NO.	DESCRIPTION	REF. NO.	PART NO.	DESCRIPTION	REF. NO.	PART NO.	DESCRIPTION
16	690136	Crankshaft	26	690162	Ring Set (Standard)	29	692419	Rod—Connecting (Standard)
24	222698	Key—Flywheel			————— <b>Note</b> —————			————— <b>Note</b> —————
25	692271	Piston Assembly (Standard)		690164	Ring Set (.010" O.S.)		692420	Rod—Connecting (.020" Undersize)
		————— <b>Note</b> —————		690166	Ring Set (.020" O.S.)	32	692852	Screw (Connecting Rod)
	692272	Piston Assembly (.010" O.S.)		690168	Ring Set (.030" O.S.)	146	94196	Key—Timing
	692273	Piston Assembly (.020" O.S.)	27	691299	Lock—Piston Pin	741	691284	Gear—Timing
	692274	Piston Assembly (.030" O.S.)	28	498319	Pin—Piston (Standard)	757	213998	Link—Counterweight
					————— <b>Note</b> —————	758	692423	Counterweight
				498320	Pin—Piston (.005 O.S.)	759	691239	Pin—Counterweight
						761	691096	Screw (Counterweight)

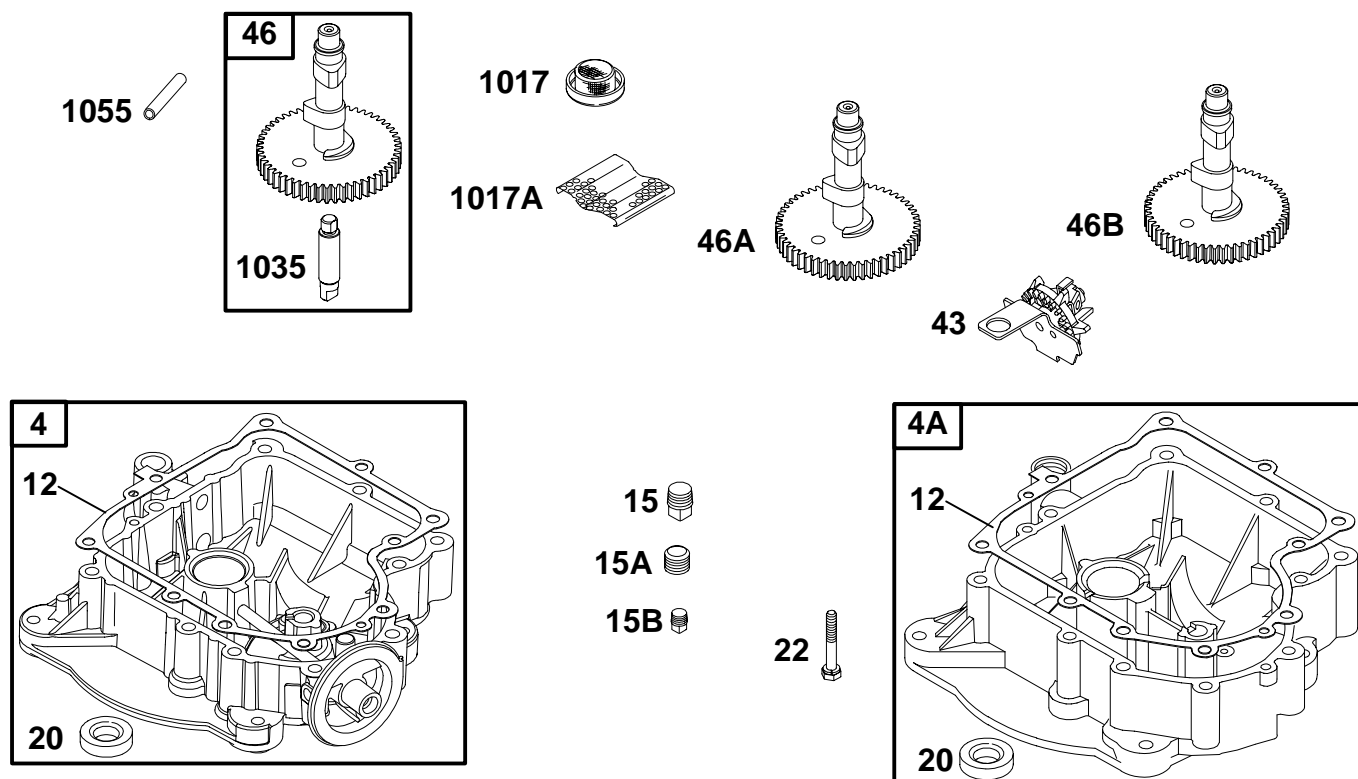
★ Included in Engine Gasket Set-Ref. No. 358.

△ Included in Valve Gasket Set-Ref. No. 1095.

■ Included in All Kits ★△◆◆

● Included in Carburetor Overhaul Kit-Ref. No. 121, 121A.

◆ Included in Carburetor Gasket Set-Ref. No. 977, 977A.



REF. NO.	PART NO.	DESCRIPTION	REF. NO.	PART NO.	DESCRIPTION	REF. NO.	PART NO.	DESCRIPTION
4	693582	Sump-Engine (Used After Code Date 98063000). ———— <b>Note</b> ———— 496742 Sump-Engine (Used Before Code Date 98070100).	15	94239	Plug-Oil Drain (Standard)	1017	690770	Screen-Oil Pump (Push In) (Used After Code Date 98063000).
4A	494238	Sump-Engine Used on Type No(s). 0101, 0113, 0114, 0130, 0132, 0135, 0136.	15A	94880	Plug-Oil Drain (Flush)	1017A	691216	Screen-Oil Pump (Snap On) (Used Before Code Date 98070100).
12	★271916	Gasket- Crankcase (.015" Standard) ———— <b>Note</b> ———— ★271997 Gasket- Crankcase (.005") ★271996 Gasket- Crankcase (.009")	15B	690283	Plug-Oil Drain (Oil Filter Adapter)	1035	693784	Shaft-Pump (Used After Code Date 98063000).
			20	★291675	Seal-Oil (PTO Side)	1055	690528	Tube-Oil Pump
			22	692125	Screw (Crankcase Cover/ Sump)			
			43	490815	Slinger-Governor/Oil			
			46	693450	Camshaft (Used After Code Date 98063000).			
			46A	692422	Camshaft (Used Before Code Date 98070100).			
			46B	692421	Camshaft Used on Type No(s). 0113, 0130, 0132, 0135, 0136.			

★ Included in Engine Gasket Set-Ref. No. 358.

△ Included in Valve Gasket Set-Ref. No. 1095.

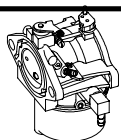
■ Included in All Kits ★△◆

● Included in Carburetor Overhaul Kit-Ref. No. 121, 121A.

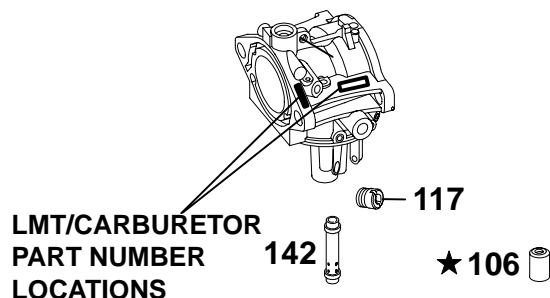
◆ Included in Carburetor Gasket Set-Ref. No. 977, 977A.

# 310700 to 310799

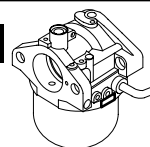
## WALBRO



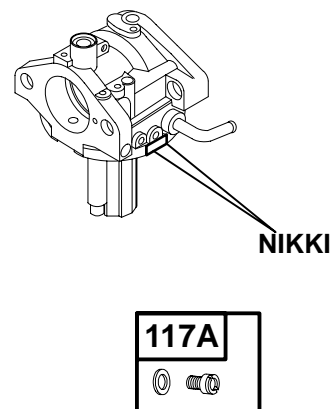
125



## NIKKI



125A



★ **REQUIRES SPECIAL TOOLS  
TO INSTALL. SEE REPAIR  
INSTRUCTION MANUAL.**

**SEE NEXT PAGE FOR COMPONENT SERVICE**

REF. NO.	PART NO.	DESCRIPTION	REF. NO.	PART NO.	DESCRIPTION	REF. NO.	PART NO.	DESCRIPTION
106	●231854	Seat-Inlet (Gravity Feed)	125	690194	Carburetor (LMT 155) (Gravity Feed)	142	●692412	Nozzle-Carburetor
117	●692408	Jet-Main (Standard)	125A		Carburetor (Nikki) (Service with Walbro Carburetor)			
		———— <b>Note</b> ————						
		692411 Jet-Main (High Altitude)						
117A	●695415	Jet-Main (Standard)						
		———— <b>Note</b> ————						
		●695416 Jet-Main (High Altitude)						

★ Included in Engine Gasket Set-Ref. No. 358.

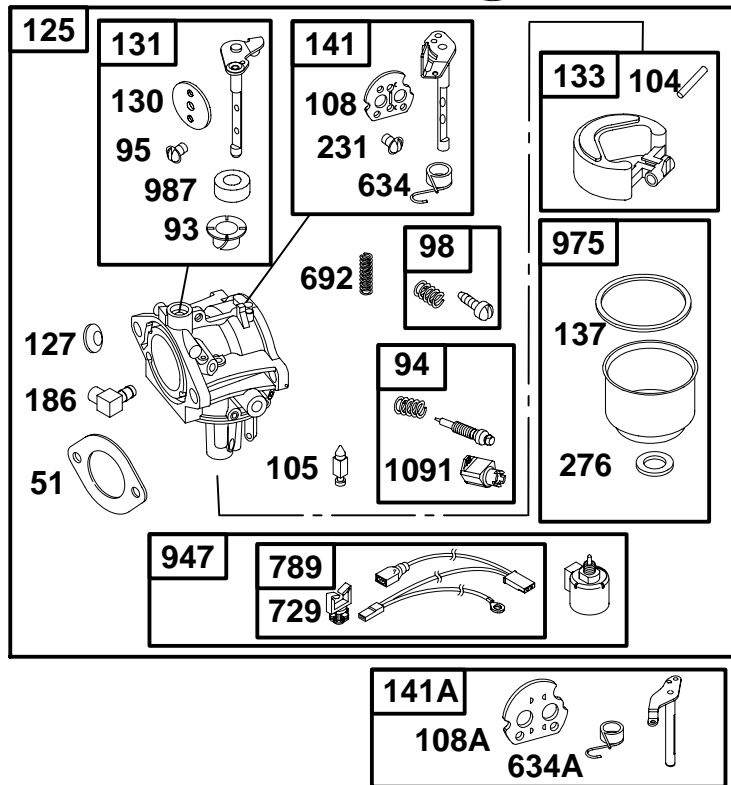
△ Included in Valve Gasket Set-Ref. No. 1095.

■ Included in All Kits ★△◆

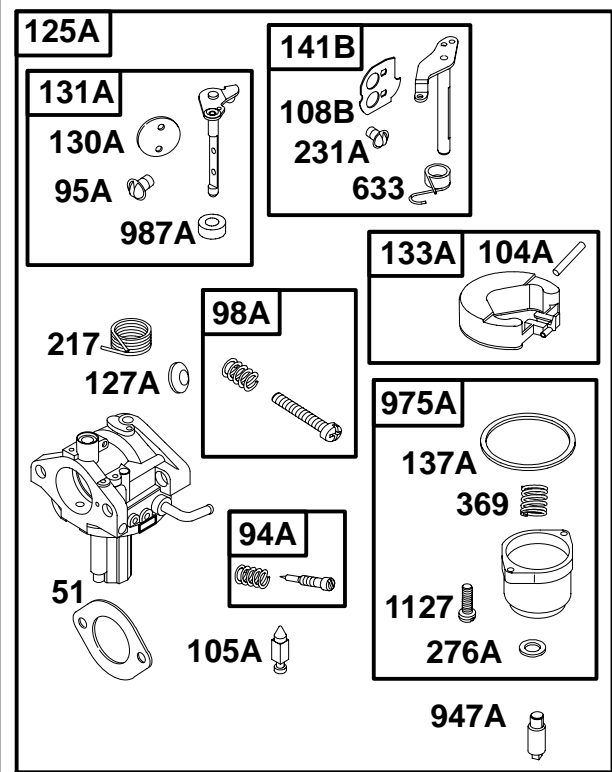
● Included in Carburetor Overhaul Kit-Ref. No. 121, 121A.

◆ Included in Carburetor Gasket Set-Ref. No. 977, 977A.

## WALBRO



## NIKKI



REF. NO.	PART NO.	DESCRIPTION	REF. NO.	PART NO.	DESCRIPTION	REF. NO.	PART NO.	DESCRIPTION
51	♦♦273650	Gasket-Intake	125A		Carburetor (See Previous Page for Service)	276	♦♦281164	Washer-Sealing
93	690602	Bushing-Throttle Shaft	127	♦695005	Plug-Welch	276A	♦♦695410	Washer-Sealing
94	498030	Kit-Idle Mixture	127A	♦690727	Plug-Welch	369	695422	Spring-Float Bowl
94A	695425	Kit-Idle Mixture	130	224539	Valve-Throttle	633	695414	Seal-Choke/Throttle Shaft
95	♦94098	Screw (Throttle Valve)	130A	695418	Valve-Throttle	634	♦690801	Spring/Seal Assembly (LMT 155) (Manual Choke)
95A	♦690718	Screw (Throttle Valve)	131	494379	Kit-Throttle Shaft	634A	♦690802	Spring/Seal Assembly (LMT 154) (Choke A Matic)
98	495800	Kit-Idle Speed	131A	695421	Kit-Throttle Shaft	692	690572	Spring-Detent
98A	695408	Kit-Idle Speed	133	494381	Float-Carburetor	729	691335	Clip-Wire (Wire Saddle)
104	♦690525	Pin-Float Hinge	133A	694914	Float-Carburetor	789	497708	Harness-Wiring
104A	♦694918	Pin-Float Hinge	137	♦♦281165	Gasket-Float Bowl	947	692734	Solenoid-Fuel
105	♦231855	Valve-Float Needle	137A	♦♦695426	Gasket-Float Bowl	947A	695423	Solenoid-Fuel
105A	♦694922	Valve-Float Needle	141	495097	Kit-Choke Shaft (LMT 155) (Manual Choke)	975	495933	Bowl-Float
108	690464	Valve-Choke (LMT 155) (Manual Choke)	141A	495931	Kit-Choke Shaft (LMT 154) (Choke A Matic)	975A	695417	Bowl-Float
108A	692344	Valve-Choke (LMT 154) (Choke A Matic)	141B	695420	Kit-Choke Shaft	987	♦691326	Seal-Throttle Shaft
108B	695419	Valve-Choke	186	493496	Connector-Hose	987A	♦281765	Seal-Throttle Shaft
125		Carburetor (See Previous Page for Service)	217	695409	Spring-Choke Return	1091	691333	Cap-Limiter
			231	♦94098	Screw (Choke Valve)	1127	695407	Screw (Float Bowl)
			231A	♦690718	Screw (Choke Valve)			

★ Included in Engine Gasket Set-Ref. No. 358.

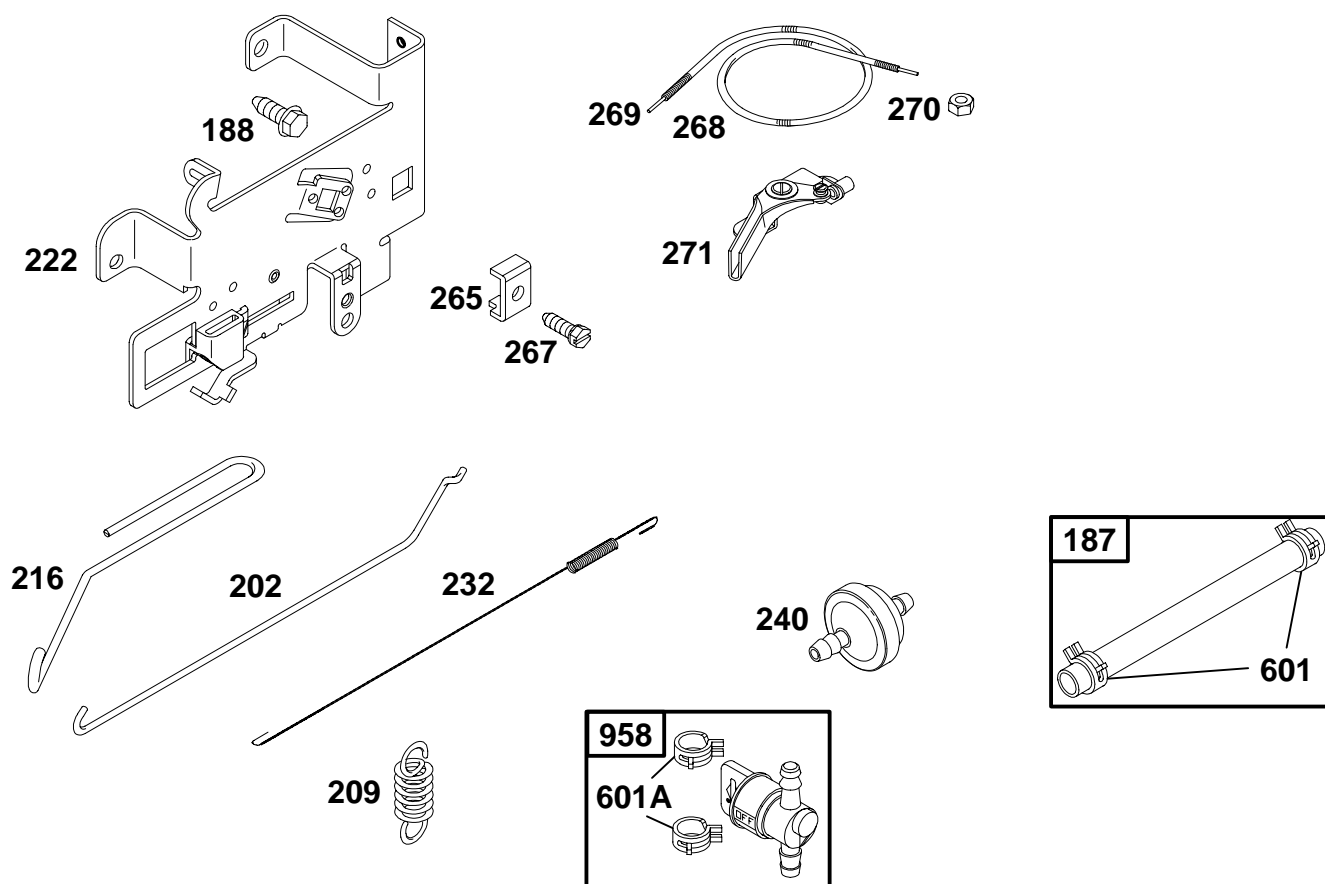
△ Included in Valve Gasket Set-Ref. No. 1095.

■ Included in All Kits ★△◆◆

◆ Included in Carburetor Overhaul Kit-Ref. No. 121, 121A.

♦♦ Included in Carburetor Gasket Set-Ref. No. 977, 977A.

# 310700 to 310799



REF. NO.	PART NO.	DESCRIPTION	REF. NO.	PART NO.	DESCRIPTION	REF. NO.	PART NO.	DESCRIPTION
187	298049	Line—Fuel (Cut to Required Length)	222	694042	Bracket—Control (Used After Code Date 99010700).	267	94906	Screw (Casing Clamp)
188	94929	Screw (Control Bracket)			<b>Note</b>	268	65616	Casing—Control Wire (Cut to Required Length)
202	262767	Link—Mechanical Governor		495611	Bracket—Control (Used Before Code Date 99010800).	269	26633	Wire—Control (Cut to Required Length)
209	260695	Spring—Governor (Green)	232	262785	Spring—Governor Link	270	63426	Nut (Control Wire Casing)
		<b>Note</b>	240	298090	Fuel Filter (150 Micron)	271	290568	Lever—Control
		261126			<b>Note</b>	601	95162	Clamp—Hose (Spring Wire)
		261126			394358			Clamp—Hose (Spring Steel)
216	262766	Link—Choke			Filter—Fuel (75 Micron) Used on Type No(s). 0130.	601A	93807	Clamp—Hose (Spring Steel)
			265	221535	Clamp—Casing	958	494768	Valve—Fuel Shut Off

★ Included in Engine Gasket Set—Ref. No. 358.

△ Included in Valve Gasket Set—Ref. No. 1095.

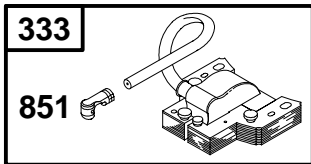
■ Included in All Kits ★△◆◆

● Included in Carburetor Overhaul Kit—Ref. No. 121, 121A.

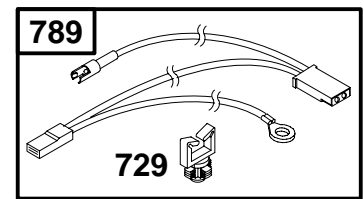
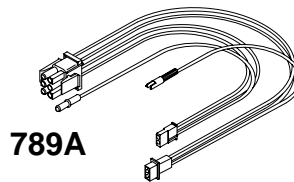
◆ Included in Carburetor Gasket Set—Ref. No. 977, 977A.



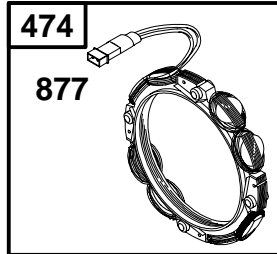
# 310700 to 310799



334



729

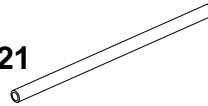


877



1119

521

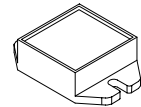


493B



526

501



REF. NO.	PART NO.	DESCRIPTION	REF. NO.	PART NO.	DESCRIPTION	REF. NO.	PART NO.	DESCRIPTION
333	495859	Armature-Magneto	501	394890	Regulator (16 Amp)	877	393456	Wire/Connector-Alternator (Dual Circuit)
334	94731	Screw (Magneto Armature)	521	690581	Shield-Cable	<b>Note</b> <b>399916</b> Wire/Connector-Alternator (Regulator)		
474	393474	Alternator (Dual Circuit)	526	394890	Screw (Regulator)			
<b>Note</b> <b>393295</b> Alternator (Regulated)			729	691335	Clip-Wire (Wire Saddle)	878	393362	Harness-Alternator (Dual Circuit)
			789	497708	Harness-Wiring (Standard)	1119	93621	Screw (Alternator)
493B	694475	Bracket-Mounting (Regulator)	789A	695050	Harness-Wiring (Six Pin)			
			851	692424	Terminal-Sparkplug			

★ Included in Engine Gasket Set-Ref. No. 358.

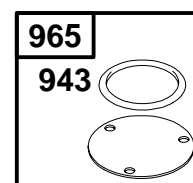
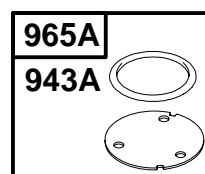
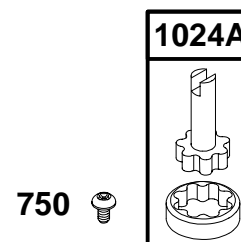
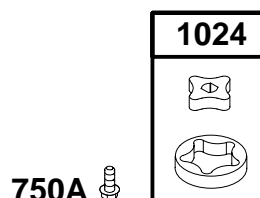
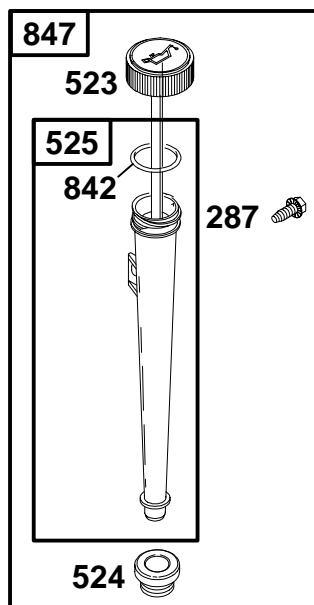
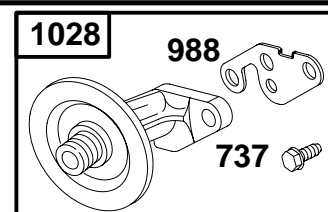
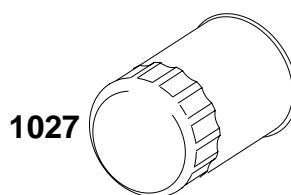
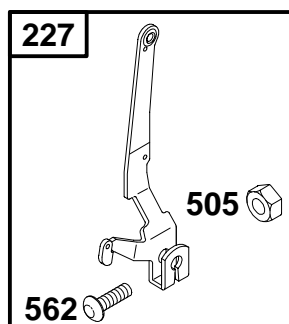
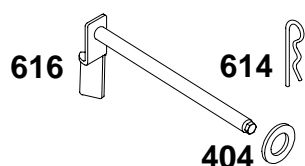
△ Included in Valve Gasket Set-Ref. No. 1095.

■ Included in All Kits ★△◆

● Included in Carburetor Overhaul Kit-Ref. No. 121, 121A.

◆ Included in Carburetor Gasket Set-Ref. No. 977, 977A.

# 310700 to 310799



REF. NO.	PART NO.	DESCRIPTION	REF. NO.	PART NO.	DESCRIPTION	REF. NO.	PART NO.	DESCRIPTION
227	691374	Lever-Governor Control	750	691033	Screw (Oil Pump Cover 1/2" Long) (Used After Code Date 98063000).	965	499613	Cover-Oil Pump (Used After Code Date 98063000).
287	94903	Screw (Dipstick Tube)				965A	496745	Cover-Oil Pump (Used Before Code Date 98070100).
404	94927	Washer (Governor Crank)	750A	690960	Screw (Oil Pump Cover 5/8" Long) (Used Before Code Date 98070100).	988	★691317	Gasket-Oil Adapter
505	691251	Nut (Governor Control Lever)				1024	499054	Pump-Oil (Used After Code Date 98063000).
523	495230	Dipstick	842	★270920	O-Ring Seal (Dipstick/Tube)	1024A	493884	Pump-Oil (Used Before Code Date 98070100).
524	★281370	Seal-Dipstick Tube	847	496415	Dipstick/Tube Assembly	1027	492932	Filter-Oil
525	691398	Tube-Dipstick	943	★690589	O-Ring Seal (Oil Pump Cover) (Used After Code Date 98063000).	1028	496744	Adapter-Oil Filter
562	691119	Bolt (Governor Control Lever)						
614	93306	Pin-Cotter	943A	★690604	O-Ring Seal (Oil Pump Cover) (Used Before Code Date 98070100).			
616	495157	Crank-Governor						
737	691118	Screw (Oil Filter Adapter)						

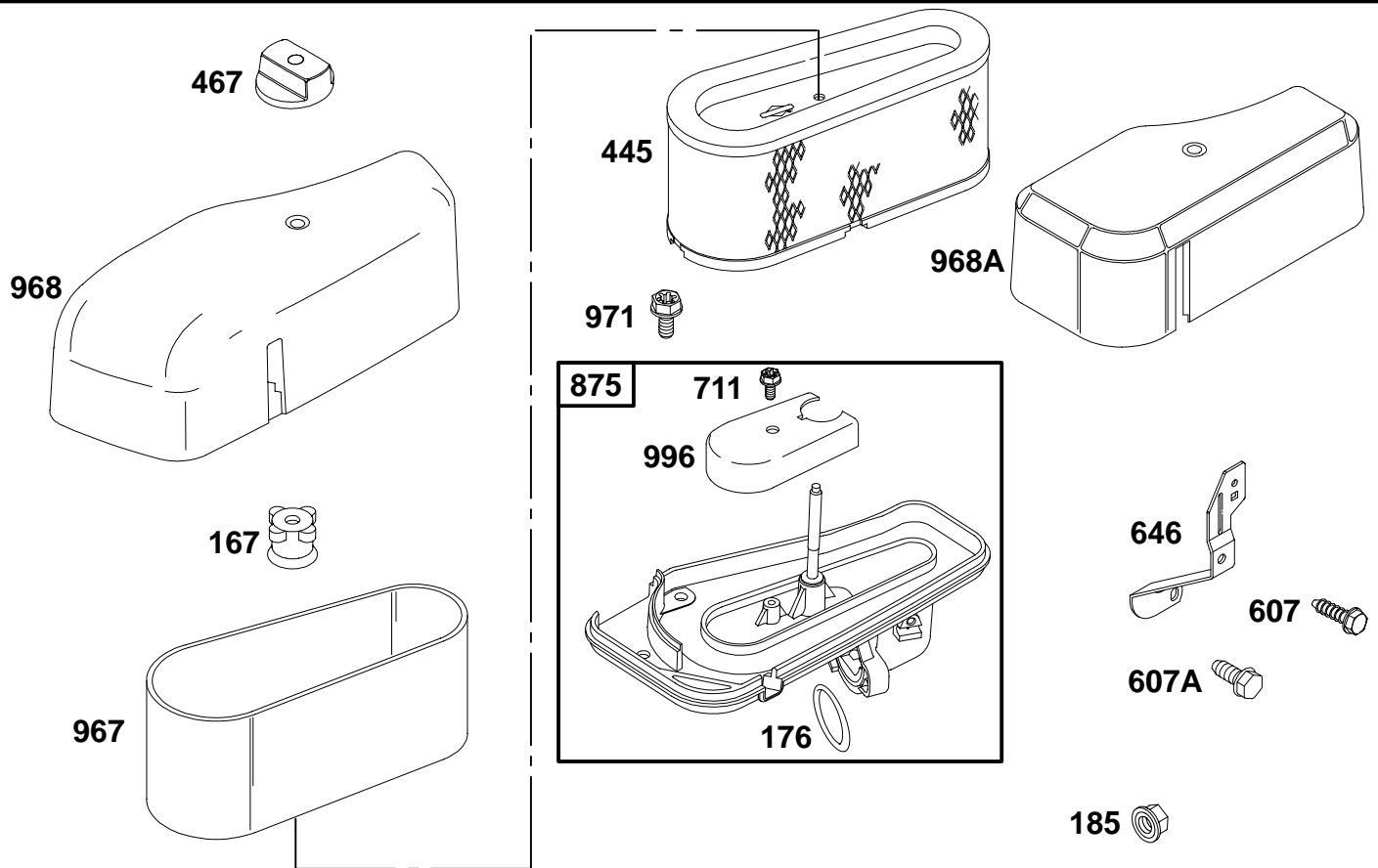
★ Included in Engine Gasket Set-Ref. No. 358.

△ Included in Valve Gasket Set-Ref. No. 1095.

■ Included in All Kits ★△◆

● Included in Carburetor Overhaul Kit-Ref. No. 121, 121A.

◆ Included in Carburetor Gasket Set-Ref. No. 977, 977A.



REF. NO.	PART NO.	DESCRIPTION	REF. NO.	PART NO.	DESCRIPTION	REF. NO.	PART NO.	DESCRIPTION
167	281051	Seal-Air Cleaner Nut	607A	94929	Screw	968A	281104	Cover-Air Cleaner (Dual Element) Used on Type No(s). 0136.
176	★281106	O-Ring Seal (Air Cleaner Base)			(Air Cleaner Brace 3/8" Long)			
185	94010	Nut (Air Cleaner Base)	646	690460	Brace-Air Cleaner	971	692129	Screw (Air Cleaner Base)
445	496894	Filter-Air Cleaner Cartridge	711	690703	Screw (Carburetor Shield)	996	690678	Shield-Carburetor
467	493903	Knob-Air Cleaner	875	693686	Base-Air Cleaner (Plastic)			
607	690703	Screw (Air Cleaner Brace 7/16" Long)	967	272403	Filter-Pre Cleaner			
			968	692139	Cover-Air Cleaner (Dual Element, I/C)			

★ Included in Engine Gasket Set-Ref. No. 358.

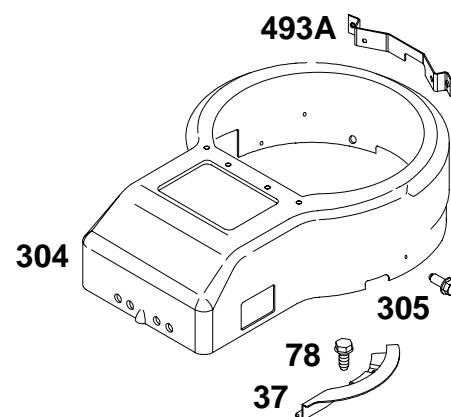
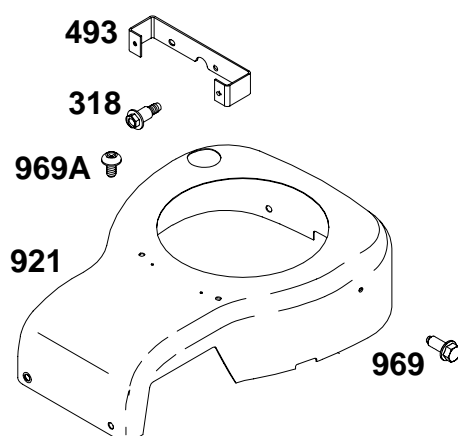
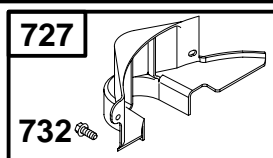
△ Included in Valve Gasket Set-Ref. No. 1095.

■ Included in All Kits ★△◆

● Included in Carburetor Overhaul Kit-Ref. No. 121, 121A.

◆ Included in Carburetor Gasket Set-Ref. No. 977, 977A.

## 310700 to 310799



## 1036 EMISSIONS LABEL

REF. NO.	PART NO.	DESCRIPTION	REF. NO.	PART NO.	DESCRIPTION	REF. NO.	PART NO.	DESCRIPTION
37	690456	Guard-Flywheel	727	490324	Cover-Starter Drive	1036	695700	Label-Emission
78	94896	Screw	732	94903	Screw			(Used After Code Date 00063000).
		(Flywheel Guard)			(Starter Drive Cover)			————— <b>Note</b> —————
304	690497	Housing-Blower	921	692417	Cover-Blower Housing			<b>694997</b> Label-
		(Black)			(I/C, Red)			Emission
		————— <b>Note</b> —————	969	690960	Screw			(Used After Code Date 99093000 and Before
		<b>690844</b> Housing-			(Blower Housing			Code Date 00070100).
		Blower			Cover, 5/8" Long)			<b>694332</b> Label-
		(Red)	969A	690365	Screw			Emission
		Used on Type No(s).			(Blower Housing			(Used Before Code
		0136.			Cover, 1/2" Long)			Date 99100100 and
305	690960	Screw						After Code Date
		(Blower Housing)						98123100).
318	692127	Screw						<b>692468</b> Label-
		(Mounting Bracket)						Emission
493	690493	Bracket-Mounting						(Used Before Code
		(Blower Housing Front)						Date 99010100).
493A	690494	Bracket-Mounting						
		(Blower Housing Rear)						

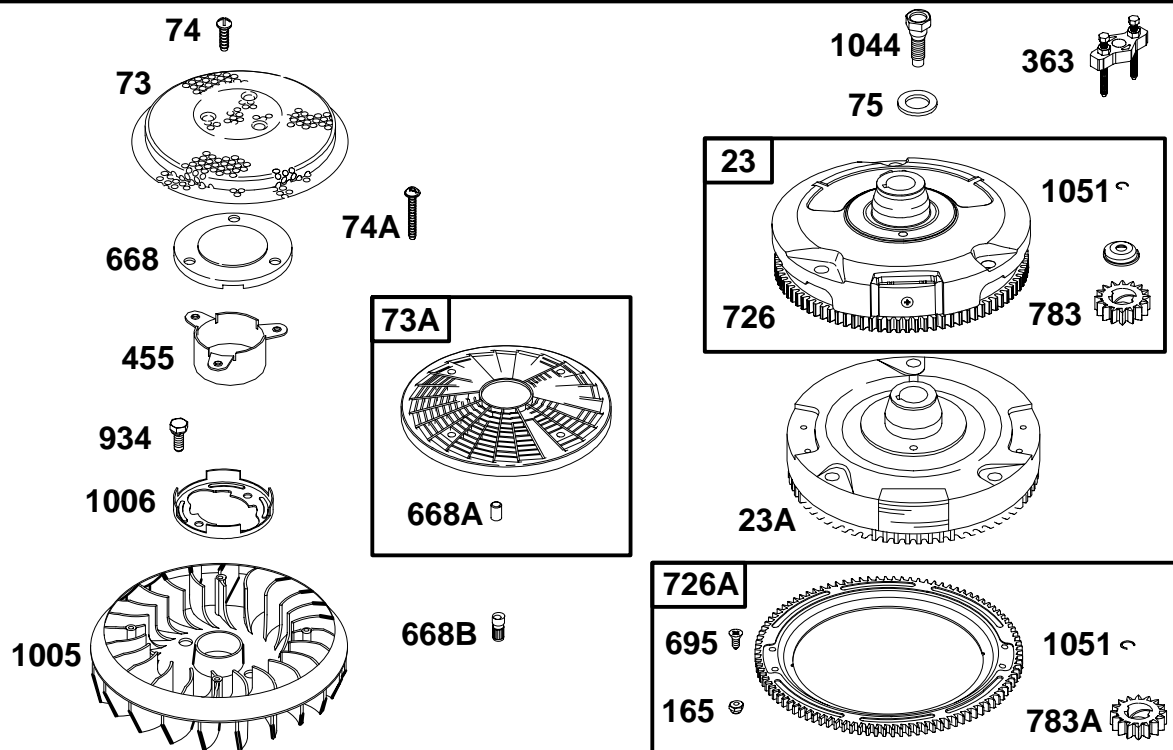
★ Included in Engine Gasket Set-Ref. No. 358.

△ Included in Valve Gasket Set-Ref. No. 1095.

■ Included in All Kits ★△◆◆

◆ Included in Carburetor Overhaul Kit-Ref. No. 121, 121A.

◆ Included in Carburetor Gasket Set-Ref. No. 977, 977A.



REF. NO.	PART NO.	DESCRIPTION	REF. NO.	PART NO.	DESCRIPTION	REF. NO.	PART NO.	DESCRIPTION
23	693557	Flywheel (Steel Ring Gear) <b>Note</b> 693556 Flywheel (Steel Ring Gear) Used on Type No(s). 0114.	363	19203	Flywheel Puller	934	94627	Screw (Fan Retainer)
23A	492326	Flywheel (Plastic Ring Gear)	455	691173	Cup-Flywheel	1005	281400	Fan-Flywheel
73	690492	Screen-Rotating (Metal)	668	691323	Spacer (Metal Rotating Screen)	1006	690452	Retainer-Fan
73A	691055	Screen-Rotating (Used After Code Date 00040200). <b>Note</b> 494439 Screen- Rotating (Used Before Code Date 00040300). Used on Type No(s). 0136.	668A	691215	Spacer (Steel Split Side Insert For Plastic Rotating Screen)	1036	694997	Label-Emissions (Used After Code Date 9909300). <b>Note</b> 694332 Label- Emissions (Used Before Code Date 99100100 and After Code Date 98123100). 692468 Label- Emissions (Used Before Code Date 99010100).
74	94626	Screw (Rotating Screen)	668B	691500	Spacer (Steel Knurled Insert With Collar For Plastic Rotating Screen) (Used Before Code Date 00040300).	1044	94673	Screw (Flywheel)
74A	691057	Screw (Rotating Screen) Used on Type No(s). 0136.	695	693109	Screw (Ring Gear)	1051	263080	Ring-Retaining
75	225136	Washer (Flywheel)	726		Gear-Ring (Steel) (See Ref. 23 for Service)			
165	693148	Nut (Ring Gear)	726A	399676	Gear-Ring (Aluminum) (Services Plastic Ring Gear Only)			
			783	693713	Gear-Pinion (For Steel Ring Gear Only)			
			783A	693059	Gear-Pinion (For Aluminum Ring Gear Only)			

★ Included in Engine Gasket Set-Ref. No. 358.

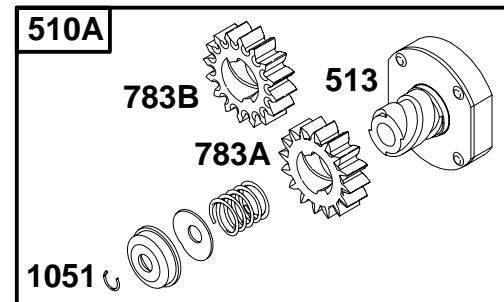
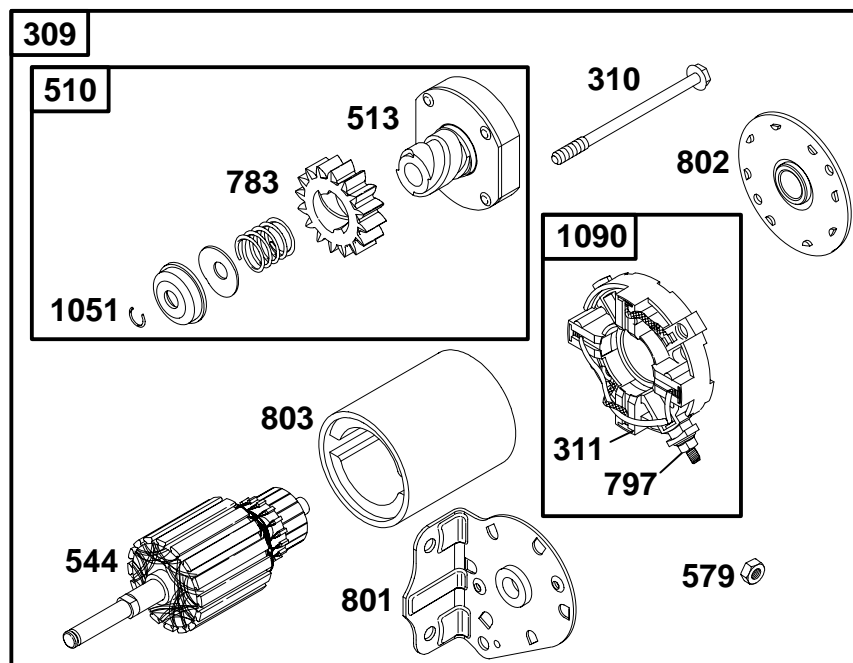
△ Included in Valve Gasket Set-Ref. No. 1095.

■ Included in All Kits ★△◆

● Included in Carburetor Overhaul Kit-Ref. No. 121, 121A.

◆ Included in Carburetor Gasket Set-Ref. No. 977, 977A.

# 310700 to 310799



REF. NO.	PART NO.	DESCRIPTION	REF. NO.	PART NO.	DESCRIPTION	REF. NO.	PART NO.	DESCRIPTION
309	693551	Motor-Starter (For Steel Ring Gear Only)	513	398003	Clutch-Drive	797	693167	Nut (Brush Retainer)
		<b>Note</b>	544	497603	Armature-Starter	801	691429	Cap-Drive
		497595 Motor-Starter (For Plastic Ring Gear Only)	579	92278	Nut (Starter Cable)	802	497607	Cap-End
310	690323	Bolt (Starter Motor)	697	690372	Screw (Drive Cap)	803	693757	Housing-Starter
311	497608	Brush Set	729A	691224	Clip-Wire	1051	263080	Ring-Retaining
510	693699	Drive-Starter (Used With Steel Ring Gear)	783	693713	Gear-Pinion (For Steel Ring Gear Only)	1090	497605	Retainer-Brush
			783A	693059	Gear-Pinion (For Aluminum Ring Gear Only)			
510A	497606	Drive-Starter (Used With Aluminum and Plastic Ring Gears)	783B	693058	Gear-Pinion (For Plastic Ring Gear Only)			

★ Included in Engine Gasket Set-Ref. No. 358.

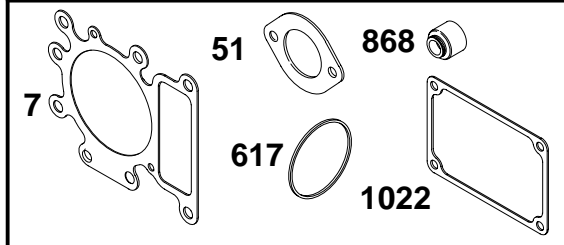
△ Included in Valve Gasket Set-Ref. No. 1095.

■ Included in All Kits ★△◆

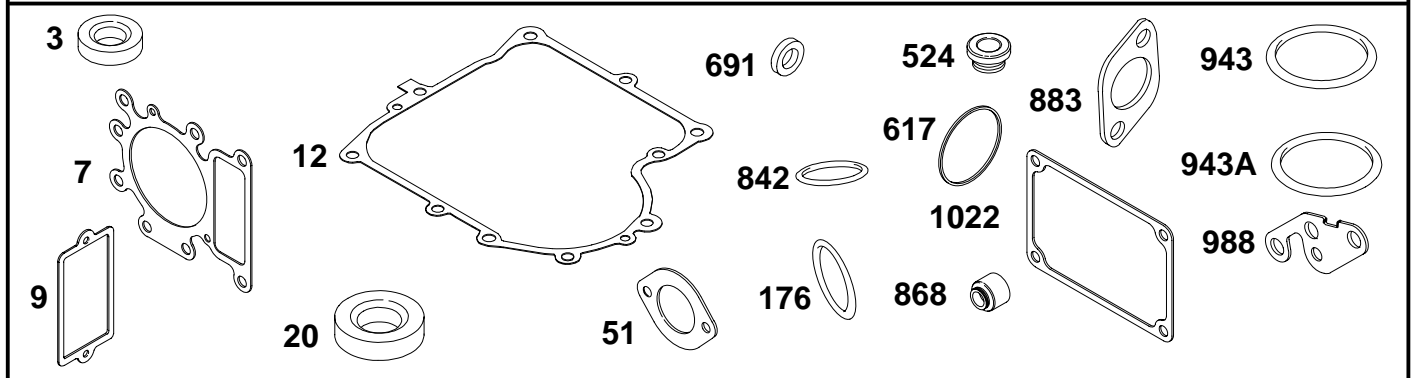
● Included in Carburetor Overhaul Kit-Ref. No. 121, 121A.

◆ Included in Carburetor Gasket Set-Ref. No. 977, 977A.

## 1095 VALVE GASKET SET



## 358 ENGINE GASKET SET



REF. NO.	PART NO.	DESCRIPTION	REF. NO.	PART NO.	DESCRIPTION	REF. NO.	PART NO.	DESCRIPTION
3	★391086	Seal—Oil (Magneto Side)	20	★291675	Seal—Oil (PTO Side)	943	★690589	O—Ring Seal (Oil Pump Cover) (Used After Code Date 98063000).
7	△★692410	Gasket—Cylinder Head	51	■273650	Gasket—Intake			
9	★27803	Gasket—Breather	176	★281106	O—Ring Seal (Air Cleaner Base)	943A	★690604	O—Ring Seal (Oil Pump Cover) (Used Before Code Date 98070100).
12	★271916	Gasket— Crankcase (.015" Standard)	358	690189	Gasket Set—Engine			
		<b>Note</b>	524	★281370	Seal—Dipstick Tube			
		★271997 Gasket— Crankcase (.005")	617	△★692138	O—Ring Seal (Intake Manifold)	988	★691317	Gasket—Oil Adapter
		★271996 Gasket— Crankcase (.009")	691	★491323	Seal—Governor Shaft	1022	△★272475	Gasket—Rocker Cover
			842	★270920	O—Ring Seal	1095	690190	Gasket Set—Valve
			868	△★690968	Seal—Valve			
			883	★272293	Gasket—Exhaust			

★ Included in Engine Gasket Set—Ref. No. 358.

△ Included in Valve Gasket Set—Ref. No. 1095.

■ Included in All Kits ★△◆

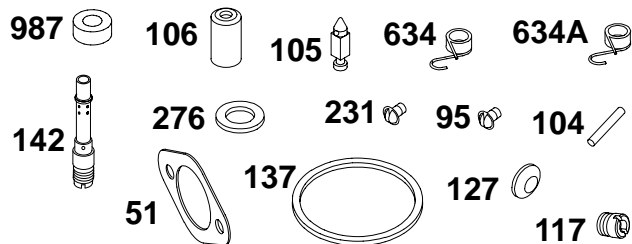
● Included in Carburetor Overhaul Kit—Ref. No. 121, 121A.

◆ Included in Carburetor Gasket Set—Ref. No. 977, 977A.

# 310700 to 310799

## WALBRO

### 121 CARBURETOR OVERHAUL KIT

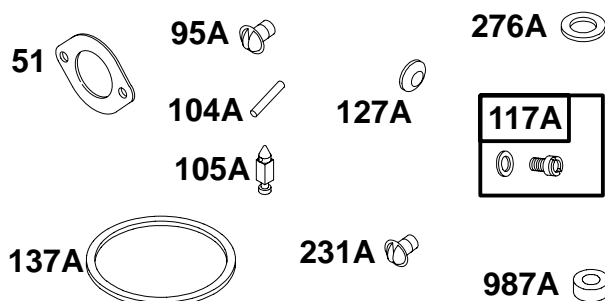


### 977 CARBURETOR GASKET SET



## NIKKI

### 121A CARBURETOR OVERHAUL KIT



### 977A CARBURETOR GASKET SET



REF. NO.	PART NO.	DESCRIPTION	REF. NO.	PART NO.	DESCRIPTION	REF. NO.	PART NO.	DESCRIPTION
51	■273650	Gasket-Intake	121A	695427	Kit-Carburetor Overhaul	977	690192	Gasket Set-Carburetor
95	●94098	Screw (Throttle Valve)	127	●695005	Plug-Welch	977A	695428	Gasket Set-Carburetor
95A	●690718	Screw (Throttle Valve)	127A	●690727	Plug-Welch	987	●691326	Seal-Throttle Shaft
104	●690525	Pin-Float Hinge	137	◆281165	Gasket-Float Bowl	987A	●281765	Seal-Throttle Shaft
104A	●694918	Pin-Float Hinge	137A	◆695426	Gasket-Float Bowl			
105	●231855	Valve-Float Needle	142	●692412	Nozzle-Carburetor			
105A	●694922	Valve-Float Needle	231	●94098	Screw (Choke Valve)			
106	●231854	Seat-Inlet (Gravity Feed)	231A	●690718	Screw (Choke Valve)			
117	●692408	Jet-Main	276	◆281164	Washer-Sealing			
117A	●695415	Jet-Main	276A	◆695410	Washer-Sealing			
		<b>Note</b>	634	●690801	Spring/Seal Assembly (LMT 155, Manual Choke)			
		●695416 Jet-Main (High Altitude)	634A	●690802	Spring/Seal Assembly (LMT 154, Choke A Matic)			
121	690191	Kit-Carburetor Overhaul						

★ Included in Engine Gasket Set-Ref. No. 358.

△ Included in Valve Gasket Set-Ref. No. 1095.

■ Included in All Kits ★△◆

● Included in Carburetor Overhaul Kit-Ref. No. 121, 121A.

◆ Included in Carburetor Gasket Set-Ref. No. 977, 977A.