

28V700 to 28V799

Illustrated Parts List

Model Series

28V700 to 28V799

TYPE NUMBERS
1113, 1170.

TO FIND
THE CORRECT NUMBER OF THE PART YOU NEED:
FOLLOW THE INSTRUCTIONS BELOW

- A. Refer to Engine Model, Type and Code Number that is stamped on the blower housing of engine. Engine type numbers such as 0123 01 are listed only as 0123 in most instances. The two digits (01 or 02, etc.) to the right of the space may be required for more accurate parts identification in some instances. Select the Illustrated Parts List covering the correct Model Series and Type Number.
- B. Refer to the Illustrations and compare the original part with Illustration. The number next to the illustration is the Reference Number. Assemblies include all parts shown in frames. All parts shown in assembly frames having individual reference numbers can be purchased separately.
- C. After the Reference Number has been identified, refer to the Numerical text, where Reference and Primary Part Number are listed. **THE PRIMARY PART IS USED ON ALL TYPE NUMBERS EXCEPT THOSE TYPE NUMBERS UNDER "NOTE."**
- D. If a "Note" appears below the Primary Part Number, it means that this part differs from the Primary Part for certain types. If your Type number is listed under "Note," order the part referred to at the "Note."
- E. If your Engine Type Number does not appear after any part number listed under "Note," use the Primary Part Number.
- F. For Engine Type Numbers not covered by this book, check other Parts Lists having the same engine model or contact your source of supply.

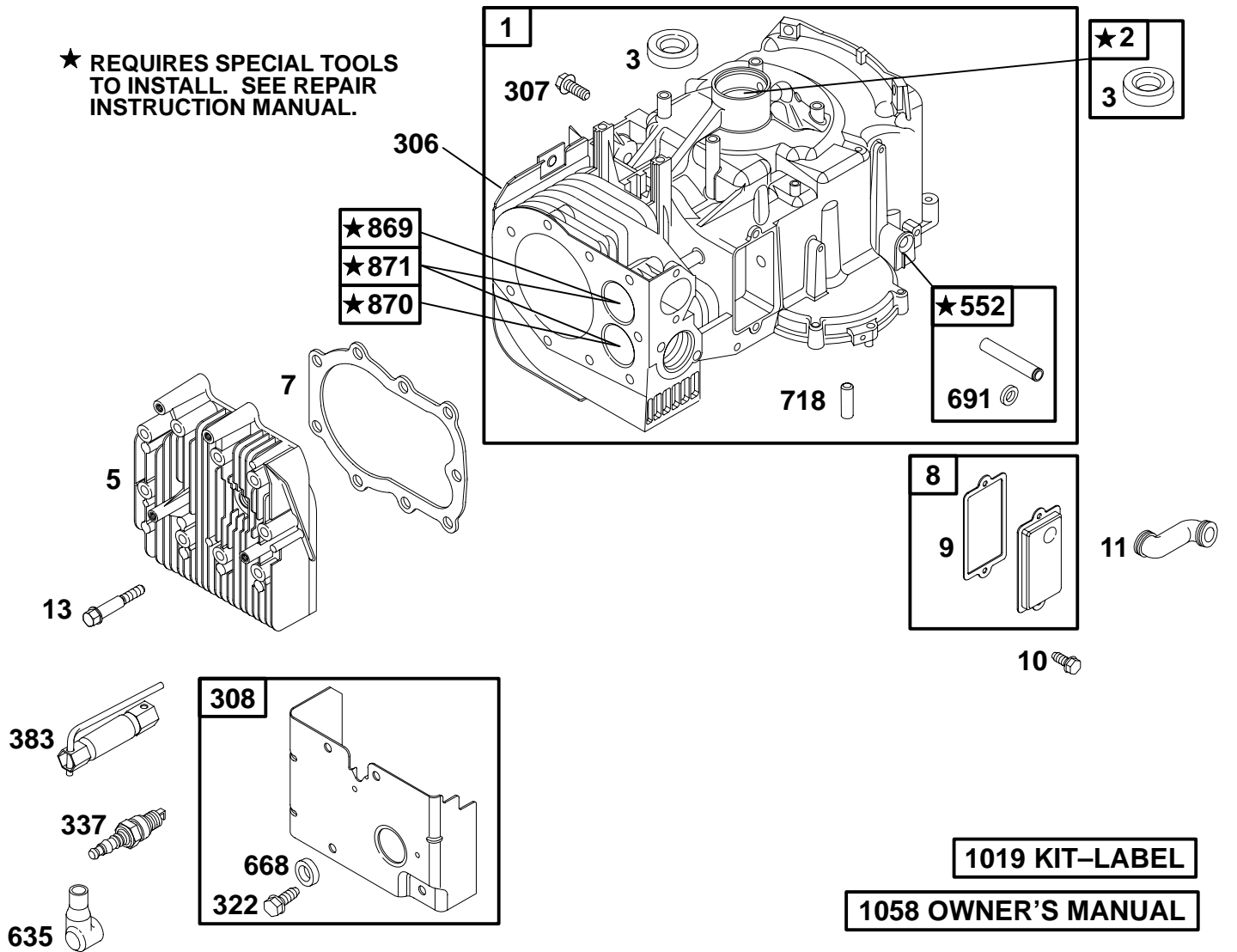
PRINTED IN U.S.A.



COPYRIGHT by BRIGGS & STRATTON CORPORATION
All rights reserved. No part of this material may be reproduced or transmitted, in any form or by any means, electronic or mechanical, including photocopying, recording or by any information storage and retrieval system, without permission in writing from Briggs & Stratton Corporation.

28V700 to 28V799

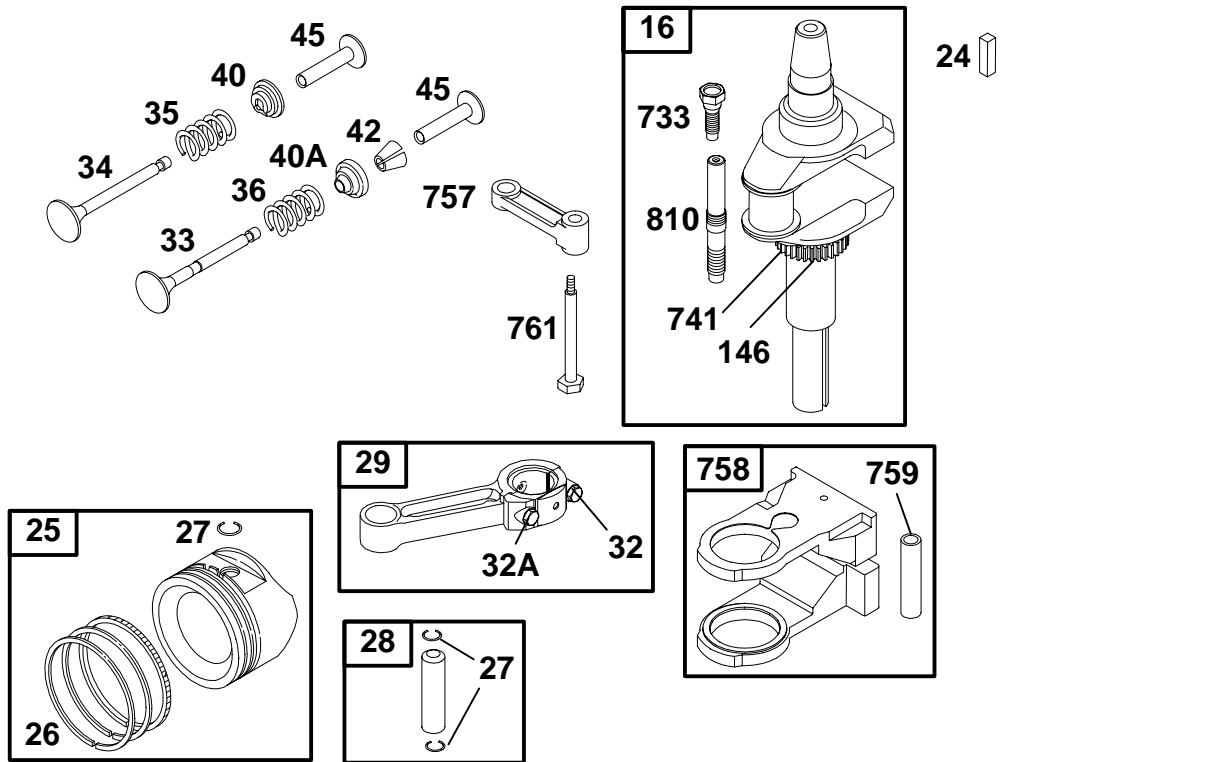
★ REQUIRES SPECIAL TOOLS TO INSTALL. SEE REPAIR INSTRUCTION MANUAL.



REF. NO.	PART NO.	DESCRIPTION	REF. NO.	PART NO.	DESCRIPTION	REF. NO.	PART NO.	DESCRIPTION
1	496413	Cylinder Assembly	306	690459	Shield-Cylinder	718	230192	Pin-Locating
2	399265	Kit-Bushing/Seal (Magneto Side)	307	94930	Screw (Cylinder Shield)	869	261463	Seat-Valve (Intake)
3	★391086	Seal-Oil (Magneto Side)	308	491490	Cover-Cylinder Head	870	262924	Seat-Valve (Exhaust)
5	494240	Head-Cylinder	322	94786	Screw (Cylinder Head Cover)	871	261961	Bushing-Valve Guide (Exhaust Valve)
7	∅★271866	Gasket-Cylinder Head	337	802592	Sparkplug (Resistor Type)	Note		
8	495735	Breather Assembly	383	89838	Wrench-Sparkplug	231218	231218	Bushing-Valve Guide (Intake Valve, Brass)
9	∅★27803	Gasket-Breather	552	491986	Bushing-Governor Crank	1019	491193	Kit-Label
10	691666	Screw (Breather Assembly)	635	66538	Boot-Sparkplug	1058	274787	Owners Manual (Emission)
11	280100	Tube-Breather	668	690510	Spacer			
13	94622	Screw (Cylinder Head)	691	★491323	Seal-Governor Shaft			

★ Included in Engine Gasket Set-See Ref. No. 358
 ● Included in Carburetor Overhaul Kit-See Ref. No 121.

◆ Included in Carburetor Gasket Set-See Ref. No. 977.
 ∅ Included in Valve Gasket Set-See Ref No 1095.

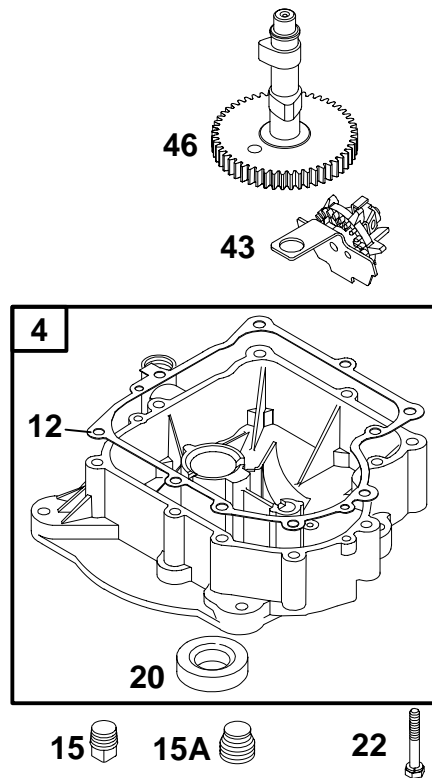


REF. NO.	PART NO.	DESCRIPTION	REF. NO.	PART NO.	DESCRIPTION	REF. NO.	PART NO.	DESCRIPTION
16	693944	Crankshaft (Used After Code Date 95073100). Note — 498971 Crankshaft (Used Before Code Date 95080100).	26	391780	Ring Set (Standard) Note — 392331 Ring Set (Chrome Standard) 499997 Ring Set (.010" O.S.) 499998 Ring Set (.020" O.S.) 499999 Ring Set (.030" O.S.)	32	690356	Screw (Connecting Rod, 1 7/8" Long)
24	222698	Key—Flywheel	27	691299	Lock—Piston Pin	32A	690348	Screw (Connecting Rod, 1 5/8" Long)
25	499282	Piston Assembly (Standard) Note — 499288 Piston Assembly (.010" O.S.) 499292 Piston Assembly (.020" O.S.) 499296 Piston Assembly (.030" O.S.)	28	498319	Pin—Piston (Standard) Note — 498320 Pin—Piston (.005" O.S.)	33	262246	Valve—Exhaust
			29	494504	Rod—Connecting (Standard) Note — 495490 Rod— Connecting (.020" Undersize)	34	262247	Valve—Intake
						35	65906	Spring—Valve (Intake)
						36	26828	Spring—Valve (Exhaust)
						40	221596	Retainer—Valve (Intake)
						40A	292260	Retainer—Valve (Exhaust)
						42	494553	Keeper—Valve
						45	262248	Tappet—Valve
						146	94196	Key—Timing
						733	94673	Screw (Crankshaft Extension)
						741	691284	Gear—Timing
						757	213998	Link—Counterweight
						758	692423	Counterweight
						759	691239	Pin—Counterweight
						761	691096	Screw (Counterweight)
						810	231828	Extension—Crankshaft

★ Included in Engine Gasket Set—See Ref. No. 358
● Included in Carburetor Overhaul Kit—See Ref. No 121.

◆ Included in Carburetor Gasket Set—See Ref. No. 977.
⊘ Included in Valve Gasket Set—See Ref No 1095.

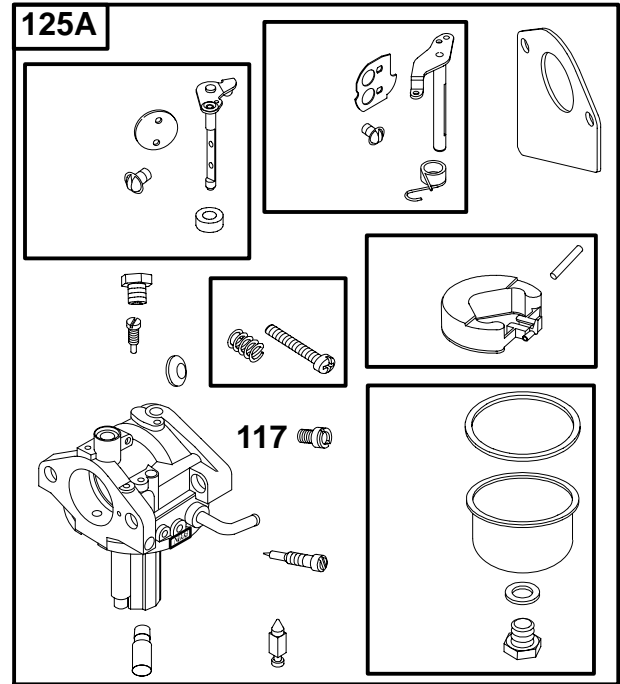
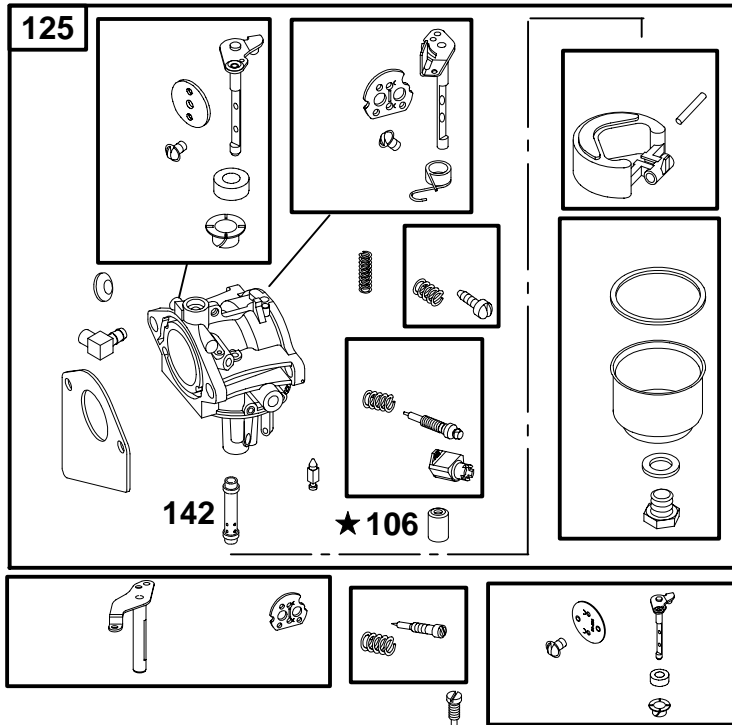
28V700 to 28V799



REF. NO.	PART NO.	DESCRIPTION	REF. NO.	PART NO.	DESCRIPTION	REF. NO.	PART NO.	DESCRIPTION
4	494238	Sump-Engine	15	94239	Plug-Oil Drain (Square Head)	22	692125	Screw (Engine Sump)
12	★271916	Gasket-Crankcase (.015" Thick, Standard)	15A	94880	Plug-Oil Drain (Recessed Square Head)	43	490815	Slinger-Governor/Oil
		Note	20	★291675	Seal-Oil (PTO Side)	46	212897	Camshaft
		★271997 Gasket-Crankcase (.005" Thick)						
		★271996 Gasket-Crankcase (.009" Thick)						

★ Included in Engine Gasket Set-See Ref. No. 358
 ● Included in Carburetor Overhaul Kit-See Ref. No 121.

◆ Included in Carburetor Gasket Set-See Ref. No. 977.
 ∅ Included in Valve Gasket Set-See Ref No 1095.



SEE NEXT PAGE FOR COMPONENT SERVICE

★ REQUIRES SPECIAL TOOLS TO INSTALL. SEE REPAIR INSTRUCTION MANUAL.

REF. NO.	PART NO.	DESCRIPTION	REF. NO.	PART NO.	DESCRIPTION	REF. NO.	PART NO.	DESCRIPTION
50	213819	Manifold-Intake	106	●231854	Seat-Inlet (Gravity Feed)	125	498027	Carburetor (Walbro)
51A	★∅272554	Gasket-Intake		Note		125A	694941	Carburetor (Nikki)
53	691098	Stud (Carburetor)		●231856	Seat-Inlet (Pump Feed, LMT 168, 169)	142	●691434	Nozzle-Carburetor (Standard)
54	94913	Screw (Intake Manifold)	117	●690880	Main Jet		497737	Nozzle-Carburetor (High Altitude)
				Note				
				●694925	Jet-Main (High Altitude)			

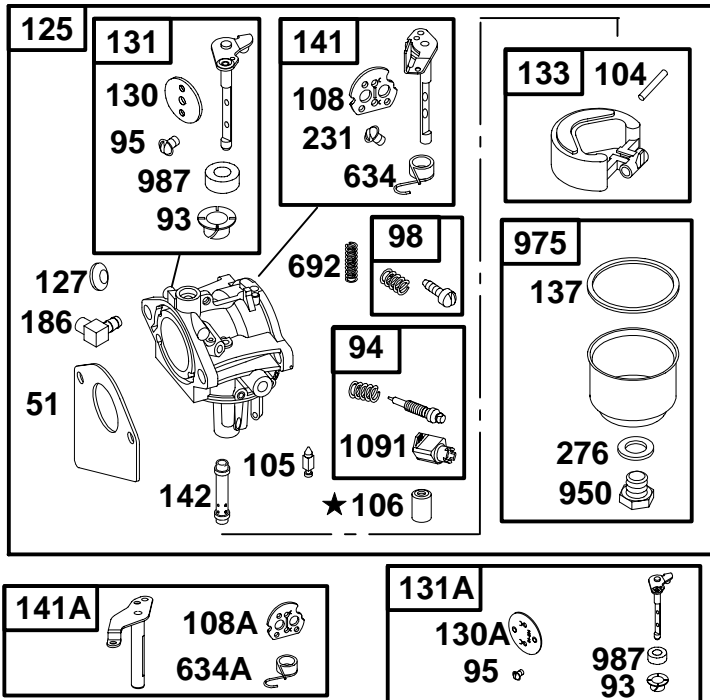
★ Included in Engine Gasket Set-See Ref. No. 358
 ● Included in Carburetor Overhaul Kit-See Ref. No 121.

◆ Included in Carburetor Gasket Set-See Ref. No. 977.
 ∅ Included in Valve Gasket Set-See Ref No 1095.

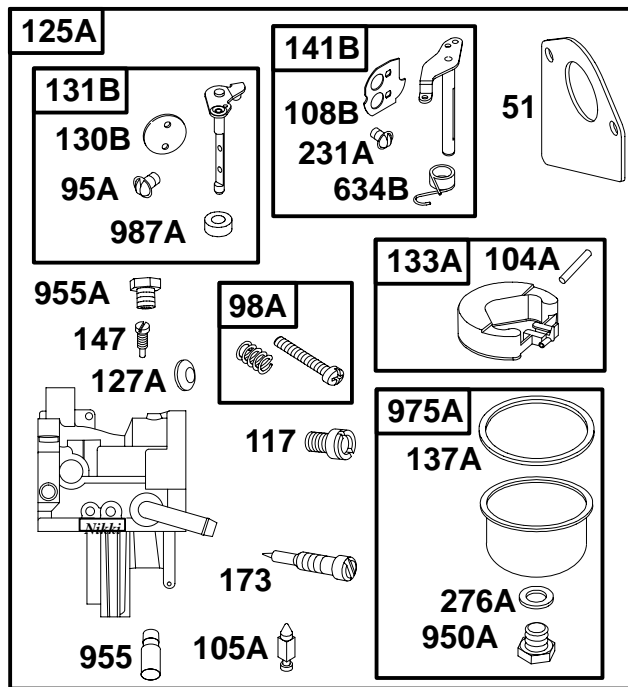
28V700 to 28V799

★ REQUIRES SPECIAL TOOLS TO INSTALL. SEE REPAIR INSTRUCTION MANUAL.

WALBRO



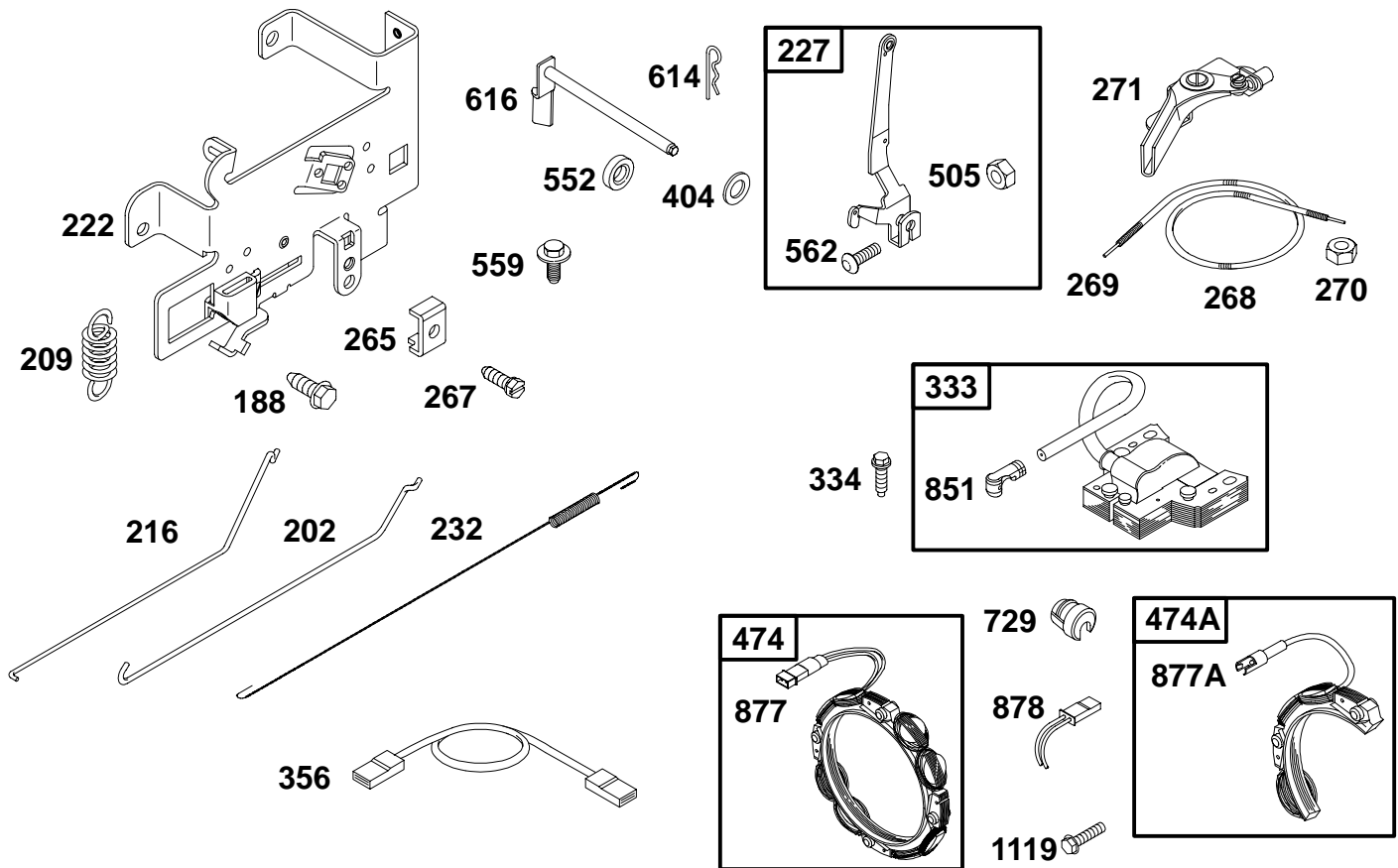
NIKKI



REF. NO.	PART NO.	DESCRIPTION	REF. NO.	PART NO.	DESCRIPTION	REF. NO.	PART NO.	DESCRIPTION
51	◆272465	Gasket-Intake	125A		Carburetor (Nikki)	173	694926	Valve-Idle Mixture
93	690602	Bushing-Throttle Shaft			(See Previous Page)	186	493496	Connector-Hose
94	498030	Kit-Idle Mixture	127	◆695005	Plug-Welch	231	◆94098	Screw (Choke Valve)
95	◆94098	Screw (Throttle Valve)	127A	◆694916	Plug-Welch	231A	◆690718	Screw (Choke Valve)
95A	◆690718	Screw (Throttle Valve)	130	690468	Valve-Throttle	276	◆281164	Washer-Sealing
98	495800	Kit-Idle Speed	130A	224539	Valve-Throttle (Use on LMT 92)	276A	◆690997	Washer-Sealing
98A	694907	Kit-Idle Speed	130B	694917	Valve-Throttle	634	◆690801	Spring/Seal Assembly (Manual Choke)
104	◆690525	Pin-Float Hinge	131	494885	Throttle Kit-Shaft	634A	◆690802	Spring/Seal Assembly (Choke A Matic)
104A	◆694918	Pin-Float Hinge	131A	494379	Kit-Throttle Shaft (Use on LMT 92)	634B	◆694912	Spring/Seal Assembly
105	◆231855	Valve-Float Needle	131B	694909	Kit-Throttle Shaft	692	262820	Spring-Detent
105A	◆694922	Valve-Float Needle	133	494381	Float-Carburetor	950	94642	Screw-Float Bowl
106		Seat-Inlet (See Previous Page)	133A	694914	Float-Carburetor	950A	694919	Screw-Float Bowl
108	690464	Valve-Choke (Manual Choke)	137	◆281165	Gasket-Float Bowl	955	◆694924	Plug-Carburetor
108A	692344	Valve-Choke (Choke A Matic)	137A	◆694920	Gasket-Float Bowl	955A	◆694921	Plug-Carburetor
108B	694923	Valve-Choke	141	495097	Kit-Choke Shaft (Manual Choke)	975	495933	Bowl-Float
117	•	Jet-Main (See Previous Page)	141A	495931	Kit-Choke Shaft (Choke A Matic)	975A	694908	Bowl-Float
125		Carburetor (Walbro) (See Previous Page)	141B	694913	Kit-Choke Shaft	987	◆691326	Seal-Throttle Shaft
			142		Nozzle-Carburetor (See Previous Page)	987A	◆690998	Seal-Throttle Shaft
			147	◆694927	Jet-Pilot	1091	691333	Cap-Limiter

★ Included in Engine Gasket Set-See Ref. No. 358
 • Included in Carburetor Overhaul Kit-See Ref. No 121.

◆ Included in Carburetor Gasket Set-See Ref. No. 977.
 ◊ Included in Valve Gasket Set-See Ref No 1095.

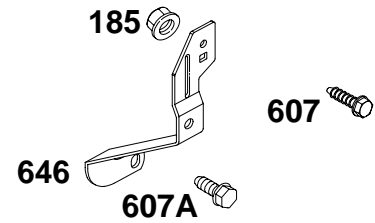
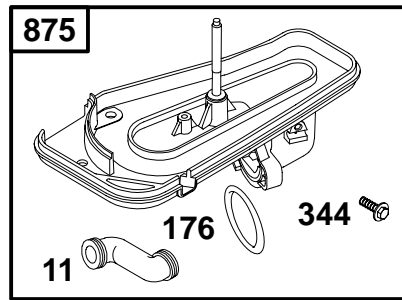
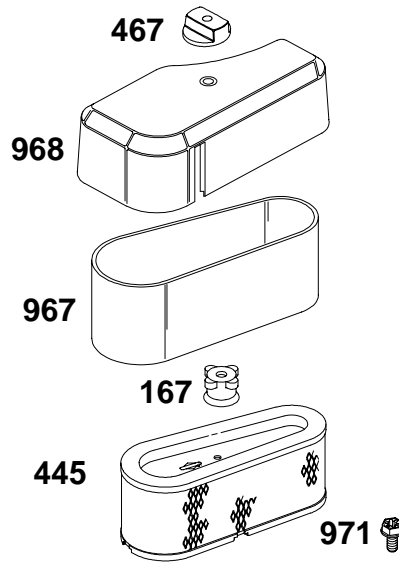
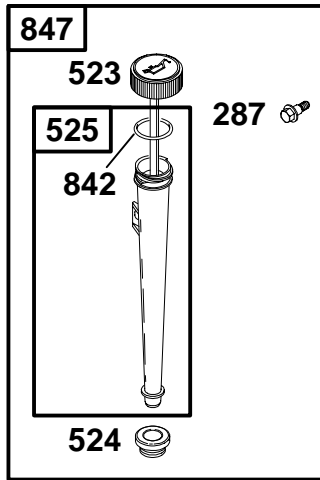


REF. NO.	PART NO.	DESCRIPTION	REF. NO.	PART NO.	DESCRIPTION	REF. NO.	PART NO.	DESCRIPTION
188	94929	Screw (Control Bracket)	265	221535	Clamp-Casing	505	691251	Nut (Governor Control Lever)
202	262767	Link-Mechanical Governor	267	94906	Screw (Casing Clamp)	552	491986	Bushing-Governor Crank
209	261306	Spring-Governor Note 260871 Spring-Governor Used on Type No(s). 1170.	268	65616	Casing-Control Wire (Cut To Required Length)	559	693675	Screw (Remote Choke Stop)
216	262766	Link-Choke	269	26633	Wire-Control (Cut To Required Length)	562	691119	Bolt (Governor Control Lever)
222	694042	Bracket-Control (Used After Code Date 99011100). Note 495611 Bracket- Control (Used Before Code Date 99011200).	270	63426	Nut (Control Wire Casing)	614	93306	Pin-Cotter
227	691374	Lever-Governor Control	271	290568	Lever-Control	616	495157	Crank-Governor
232	262785	Spring-Governor Link	333	492341	Armature-Magneto	729	690596	Clip-Wire
			334	94731	Screw (Magneto Armature)	851	493880	Terminal-Sparkplug
			356	690799	Wire-Stop	877	393456	Wire/Connector- Alternator
			404	94927	Washer (Governor Crank)	877A	393814	Wire/Connector- Alternator
			474	393474	Alternator	878	393362	Harness-Alternator
			474A	391529	Alternator (Used After Code Date 99053100).	1119	93621	Screw (Alternator)

★ Included in Engine Gasket Set-See Ref. No. 358
● Included in Carburetor Overhaul Kit-See Ref. No 121.

◆ Included in Carburetor Gasket Set-See Ref. No. 977.
⊘ Included in Valve Gasket Set-See Ref No 1095.

28V700 to 28V799

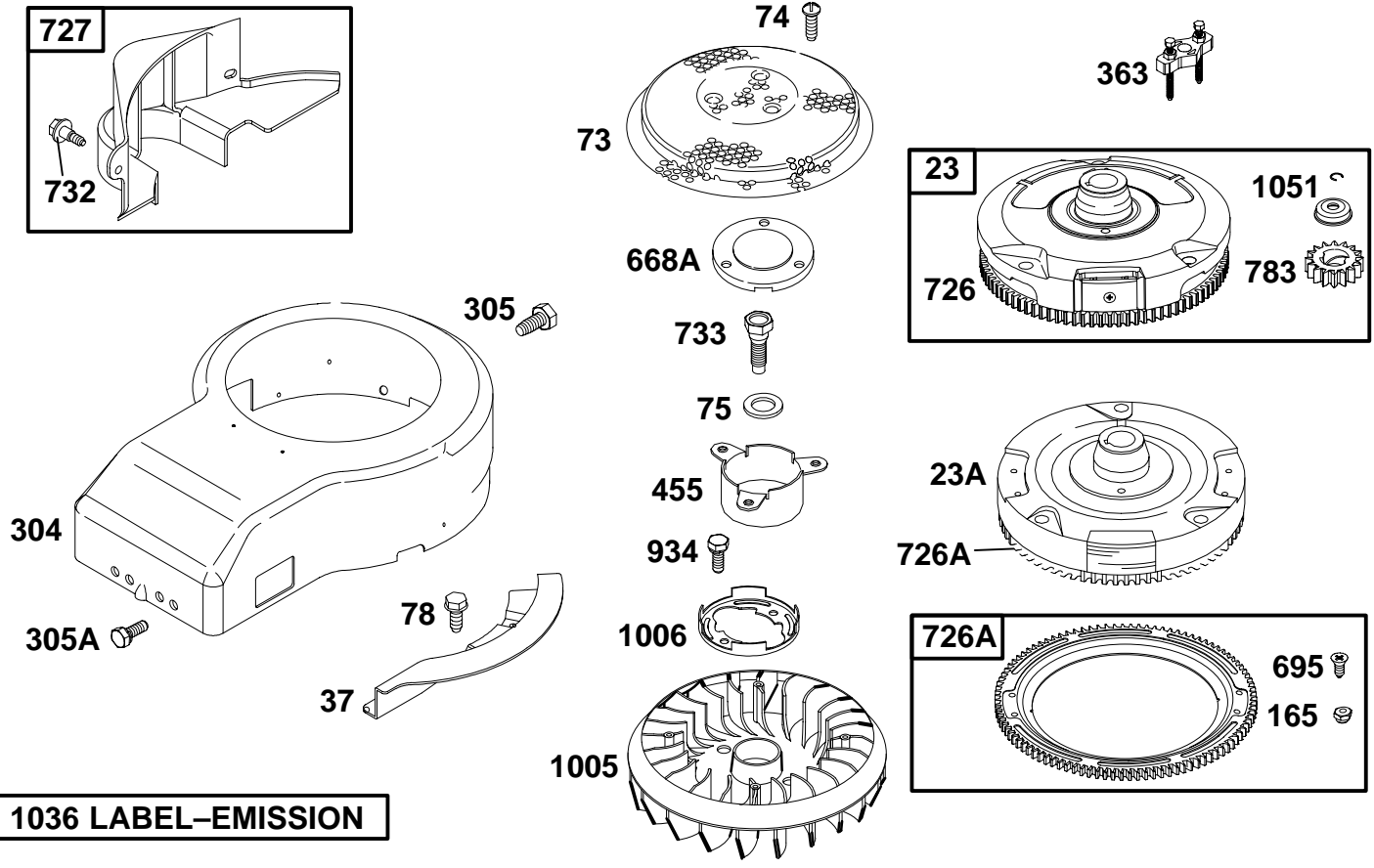


REF. NO.	PART NO.	DESCRIPTION	REF. NO.	PART NO.	DESCRIPTION	REF. NO.	PART NO.	DESCRIPTION
11	280100	Tube-Breather	524	★281370	Seal-Dipstick Tube	875	694942	Base-Air Cleaner (Use With Nikki Carburetor)
167	281051	Seal-Air Cleaner Nut	525	691398	Tube-Dipstick			Note
176	∅★281106	Gasket-Air Cleaner (Air Cleaner Base)	607	690703	Screw (Air Cleaner Brace)			693676 Base-Air Cleaner (Use With Walbro Carburetor)
185	94010	Nut (Air Cleaner Base)	607A	94929	Screw (Air Cleaner Brace)			(Used After Code Date 98091300).
287	94903	Screw (Dipstick Tube)	646	690460	Brace-Air Cleaner			494237 Base-Air Cleaner (Use With Walbro Carburetor)
344	693675	Screw (Cable Clamp)	842	★270920	O-Ring Seal			(Used Before Code Date 98091400).
445	496894	Filter-Air Cleaner Cartridge	847	496415	Dipstick/Tube Assembly	967	272403	Filter-Pre Cleaner
467	493903	Knob-Air Cleaner				968	281104	Cover-Air Cleaner
523	495230	Dipstick				971	692126	Screw (Air Cleaner Base)

★ Included in Engine Gasket Set-See Ref. No. 358
 ● Included in Carburetor Overhaul Kit-See Ref. No 121.

◆ Included in Carburetor Gasket Set-See Ref. No. 977.
 ∅ Included in Valve Gasket Set-See Ref No 1095.

28V700 to 28V799



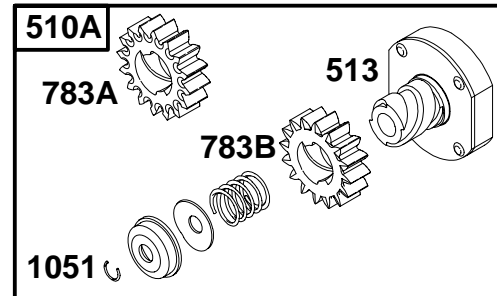
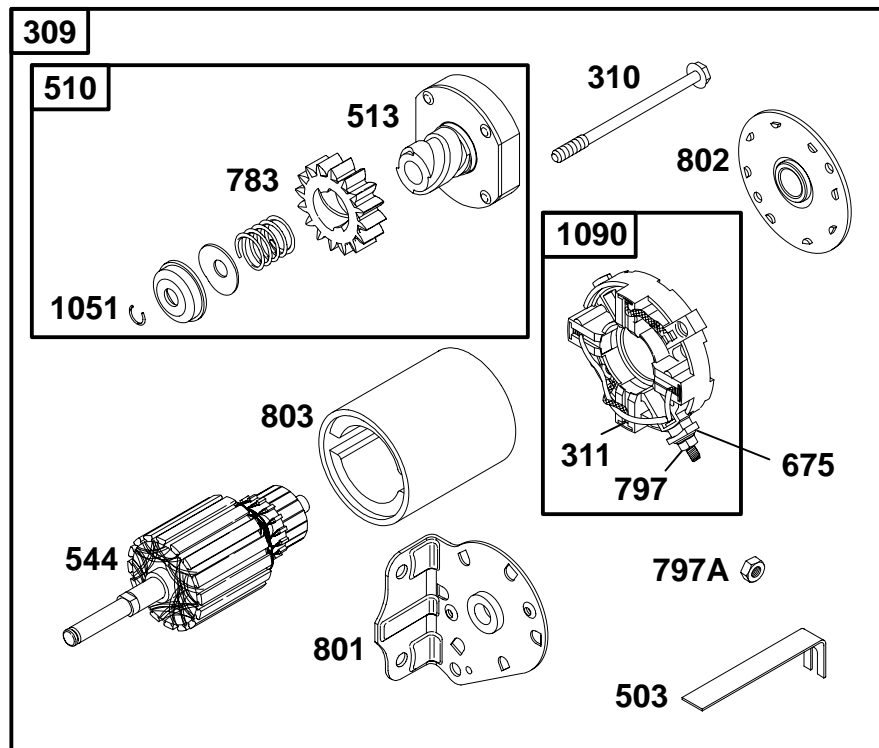
1036 LABEL-EMISSION

REF. NO.	PART NO.	DESCRIPTION	REF. NO.	PART NO.	DESCRIPTION	REF. NO.	PART NO.	DESCRIPTION
23	693557	Flywheel (Steel Ring Gear)	695	693109	Screw (Ring Gear)	1006	690452	Retainer-Fan
23A	492326	Flywheel (Plastic Ring Gear)	726		Gear-Ring (Steel)	1036	695699	Label-Emission (Used After Code Date 00063000).
37	690456	Guard-Flywheel			(See Ref. 23 for Service)			695036 Label-Emission (Used After Code Date 99093000 and Before Code Date 00070100).
73	224517	Screen-Rotating	726A	399676	Gear-Ring (Aluminum) (Services Plastic Ring Gear Only)			Note
74	94626	Screw (Rotating Screen)	727	490324	Cover-Starter Drive			694325 Label-Emission (Used Before Code Date 99100100 and After Code Date 98123100).
75	225136	Washer (Flywheel)	732	94903	Screw (Starter Drive Cover)			499362 Label-Emission (Used Before Code Date 99010100).
78	94896	Screw (Flywheel Guard)	733	94673	Screw (Crankshaft Extension)			
165	693148	Nut (Ring Gear)	783	693713	Gear-Pinion (For Steel Ring Gear Only)			
304	690846	Housing-Blower	934	94627	Screw (Fan Retainer)			
305	94786	Screw (Blower Housing)	1005	280687	Fan-Flywheel	1051	263080	Ring-Retaining
305A	692127	Screw (Blower Housing)						
363	19203	Flywheel Puller						
455	691173	Cup-Flywheel						
668A	691323	Spacer						

★ Included in Engine Gasket Set-See Ref. No. 358
 ● Included in Carburetor Overhaul Kit-See Ref. No 121.

◆ Included in Carburetor Gasket Set-See Ref. No. 977.
 ∅ Included in Valve Gasket Set-See Ref No 1095.

28V700 to 28V799

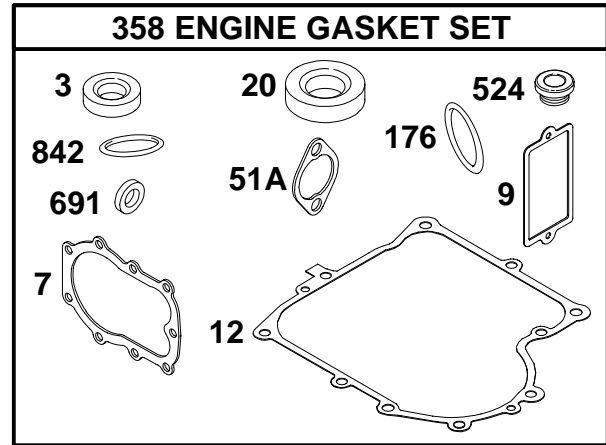
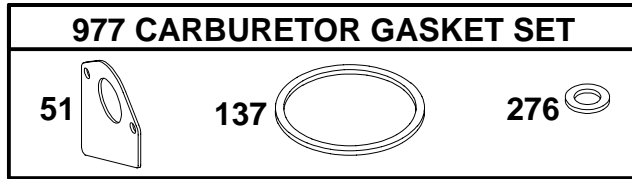
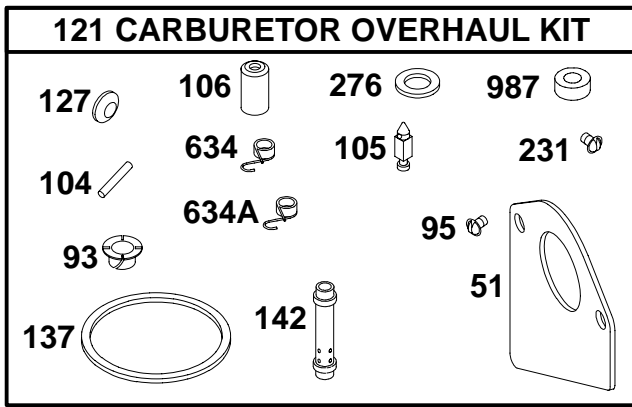


REF. NO.	PART NO.	DESCRIPTION	REF. NO.	PART NO.	DESCRIPTION	REF. NO.	PART NO.	DESCRIPTION
309	693551	Motor-Starter (For Steel Ring Gear Only)	510A	497606	Drive-Starter (Used With Aluminum & Plastic Ring Gears)	783B	693059	Gear-Pinion (For Aluminum Ring Gear Only)
		Note	513	398003	Clutch-Drive	797	693167	Nut (Brush Retainer)
		497595 Motor-Starter (For Plastic Ring Gear Only)	544	497603	Armature-Starter	797A	92278	Nut (Brush Retainer)
		693054 Motor-Starter (For Aluminum Ring Gear Only)	675	225137	Washer (Brush Retainer)	801	691429	Cap-Drive
310	690323	Bolt (Starter Motor)	697	690372	Screw (Drive Cap)	802	497607	Cap-End
311	497608	Brush Set	729A	691224	Clip-Wire	803	691427	Housing-Starter
503	691532	Strap-Starter	783	693713	Gear-Pinion (For Steel Ring Gear Only)	1051	263080	Ring-Retaining
510	693699	Drive-Starter (Used With Steel Ring Gear)	783A	693058	Gear-Pinion (For Plastic Ring Gear Only)	1090	497605	Retainer-Brush

★ Included in Engine Gasket Set—See Ref. No. 358
● Included in Carburetor Overhaul Kit—See Ref. No 121.

◆ Included in Carburetor Gasket Set—See Ref. No. 977.
⊘ Included in Valve Gasket Set—See Ref No 1095.

28V700 to 28V799



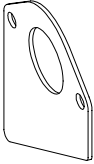











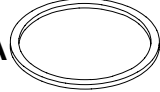
REF. NO.	PART NO.	DESCRIPTION	REF. NO.	PART NO.	DESCRIPTION	REF. NO.	PART NO.	DESCRIPTION
3	★391086	Seal—Oil (Magneto Side)	93	●690602	Bushing—Throttle Shaft	176	∅★281106	O—Ring Seal (Air Cleaner Base)
7	∅★271866	Gasket—Cylinder Head	95	●94098	Screw (Throttle Valve)	231	●94098	Screw (Choke Valve)
9	∅★27803	Gasket—Breather	104	●690525	Pin—Float Hinge	276	●★281164	Washer—Sealing
12	★271916	Gasket—Crankcase (.015" Thick, Standard)	105	●231855	Valve—Float Needle	358	494241	Gasket Set—Engine
		Note	106	●231854	Seat—Inlet (Gravity Feed)	524	★281370	Seal—Dipstick Tube
		★271997 Gasket—Crankcase (.005" Thick)			Note	634	●690801	Spring/ Seal Assembly (Manual Choke)
		★271996 Gasket—Crankcase (.009" Thick)	121	499220	Kit—Carburetor Overhaul	634A	●690802	Spring/ Seal Assembly (Choke A Matic)
20	★291675	Oil Seal (PTO Side)	127	●695005	Plug—Welch	691	★491323	Seal—Governor Shaft
51	●★272465	Gasket—Intake	137	●★281165	Gasket—Float Bowl	842	★270920	O—Ring Seal
51A	∅★272554	Gasket—Intake	142	●691434	Nozzle—Carburetor (Standard)	977	494385	Gasket Set—Carburetor
						987	●691326	Seal—Throttle Shaft
						1095	498539	Gasket Set—Valve


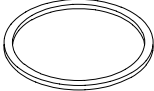

★ Included in Engine Gasket Set—See Ref. No. 358
 ● Included in Carburetor Overhaul Kit—See Ref. No. 121.

◆ Included in Carburetor Gasket Set—See Ref. No. 977.
 ∅ Included in Valve Gasket Set—See Ref. No. 1095.

28V700 to 28V799

NIKKI CARBURETOR GASKET KITS

121A CARBURETOR OVERHAUL KIT				
51 	95A 	117 	276A 	955A 
	104A 	127A 	634B 	955 
	105A 	147 	987A 	
137A 	231A 			

977A CARBURETOR GASKET SET		
51 	137A 	276A 

REF. NO.	PART NO.	DESCRIPTION	REF. NO.	PART NO.	DESCRIPTION	REF. NO.	PART NO.	DESCRIPTION
51	♦♦272465	Gasket-Intake	104A	♦♦694918	Pin-Float Hinge	231A	♦♦690718	Screw (Choke Valve)
117	♦♦690880	Jet-Main	105A	♦♦694922	Valve-Float Needle	276A	♦♦690997	Washer-Sealing
		Note	121A	694930	Kit-Carburetor Overhaul	634B	♦♦694912	Spring/Seal Assembly
		♦♦694925 Jet-Main (High Altitude)	127A	♦♦694916	Plug-Welch	955	♦♦694924	Plug-Carburetor
95A	♦♦690718	Screw (Throttle Valve)	137A	♦♦694920	Gasket-Float Bowl	955A	♦♦694921	Plug-Carburetor
			147	♦♦694927	Jet-Pilot	977A	694931	Gasket Set-Carburetor
						987A	♦♦690998	Seal-Throttle Shaft

★ Included in Engine Gasket Set-See Ref. No. 358
 ● Included in Carburetor Overhaul Kit-See Ref. No 121.

♦ Included in Carburetor Gasket Set-See Ref. No. 977.
 ∅ Included in Valve Gasket Set-See Ref No 1095.