

28S700 to 28S799

Illustrated Parts List

Model Series

28S700 to 28S799

TYPE NUMBERS

1111, 1142, 1144,
1148, 1149, 1150,
1151.

TO FIND

THE CORRECT NUMBER OF THE PART YOU NEED: FOLLOW THE INSTRUCTIONS BELOW

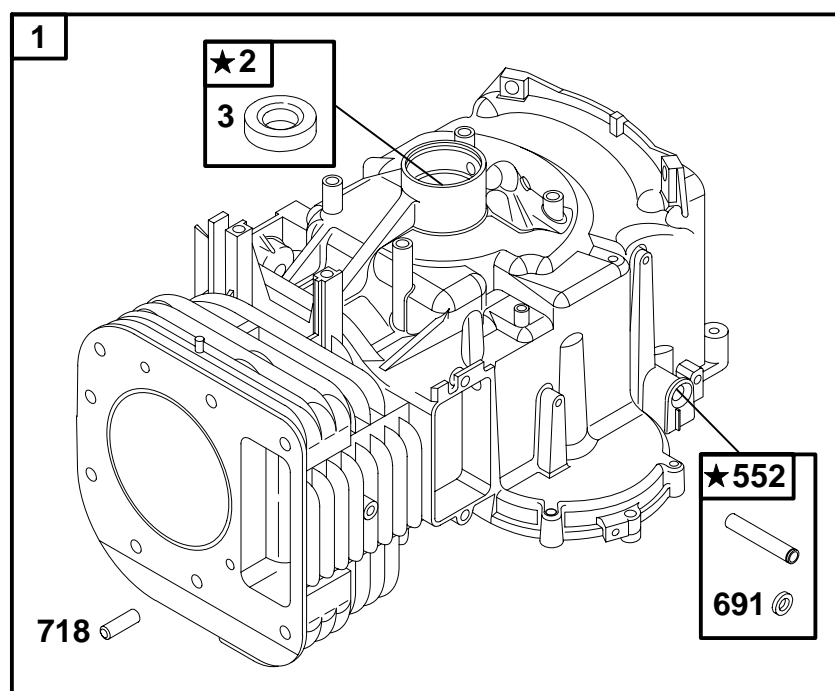
- A. Refer to Engine Model, Type and Code Number that is stamped on the blower housing of engine. Engine type numbers such as 0123 01 are listed only as 0123 in most instances. The two digits (01 or 02, etc.) to the right of the space may be required for more accurate parts identification in some instances. Select the Illustrated Parts List covering the correct Model Series and Type Number.
- B. Refer to the Illustrations and compare the original part with Illustration. The number next to the illustration is the Reference Number. Assemblies include all parts shown in frames. All parts shown in assembly frames having individual reference numbers can be purchased separately.
- C. After the Reference Number has been identified, refer to the Numerical text, where Reference and Primary Part Number are listed. **THE PRIMARY PART IS USED ON ALL TYPE NUMBERS EXCEPT THOSE TYPE NUMBERS UNDER "NOTE."**
- D. If a "Note" appears below the Primary Part Number, it means that this part differs from the Primary Part for certain types. If your Type number is listed under "Note," order the part referred to at the "Note."
- E. If your Engine Type Number does not appear after any part number listed under "Note," use the Primary Part Number.
- F. For Engine Type Numbers not covered by this book, check other Parts Lists having the same engine model or contact your source of supply.

PRINTED IN U.S.A.

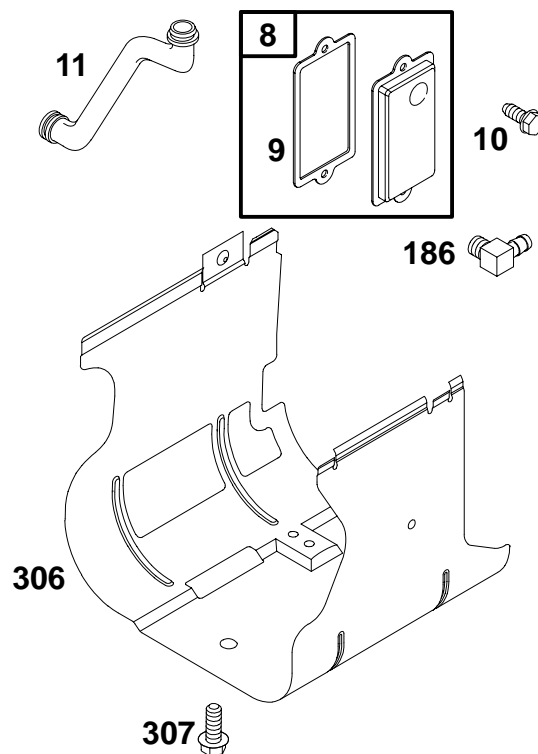


COPYRIGHT by BRIGGS & STRATTON CORPORATION
All rights reserved. No part of this material may be reproduced or transmitted, in any form or by any means, electronic or mechanical, including photocopying, recording or by any information storage and retrieval system, without permission in writing from Briggs & Stratton Corporation.

28S700 to 28S799



★ **REQUIRES SPECIAL TOOLS TO INSTALL. SEE REPAIR INSTRUCTION MANUAL.**



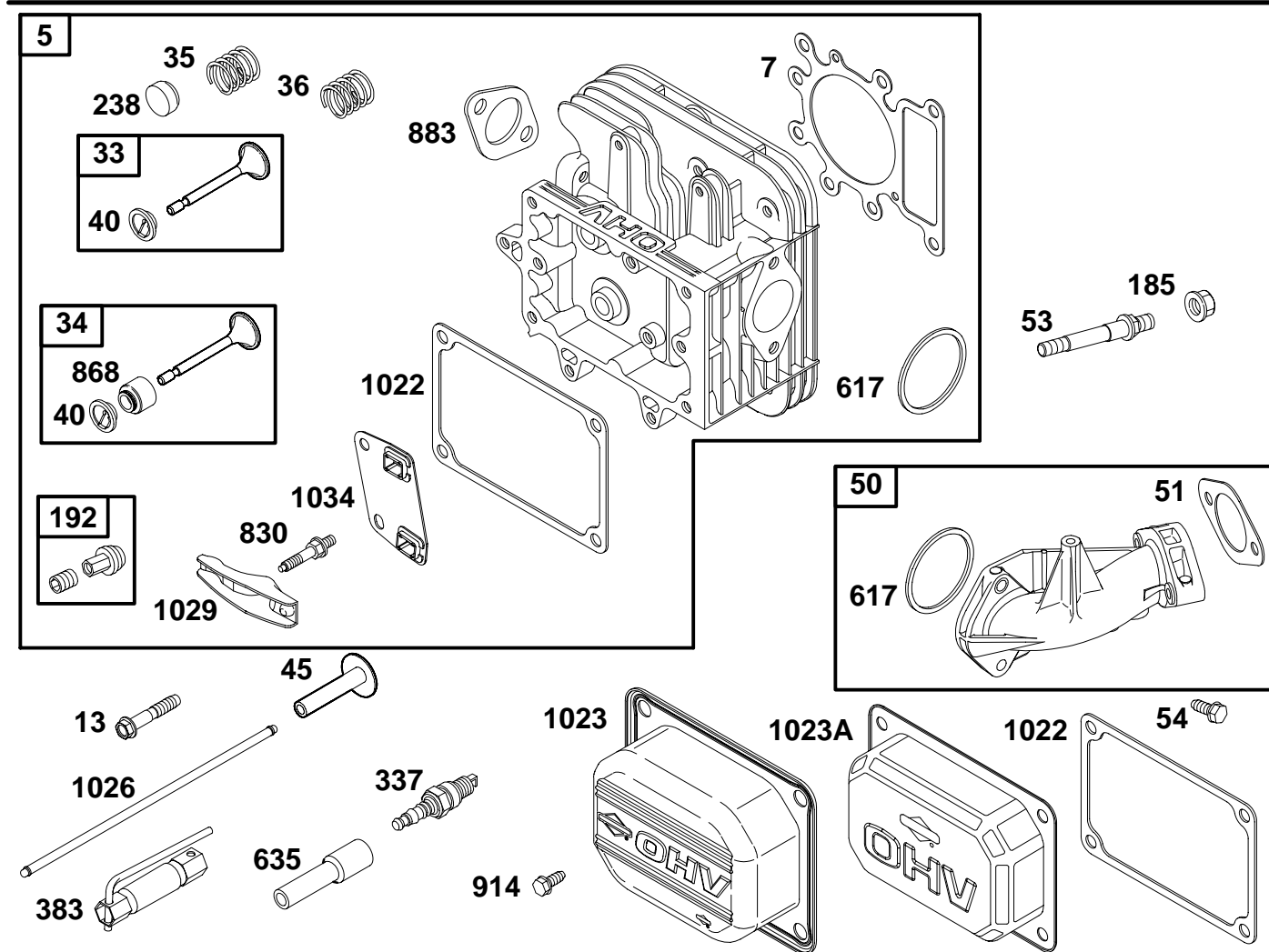
1058 OWNER'S MANUAL

REF. NO.	PART NO.	DESCRIPTION	REF. NO.	PART NO.	DESCRIPTION	REF. NO.	PART NO.	DESCRIPTION
1	496412	Cylinder Assembly	9	★27803	Gasket-Breather	552	491986	Bushing-Governor Crank
2	399265	Kit-Bushing/Seal (Magneto Side)	10	691666	Screw (Breather Assembly)	691	★491323	Seal-Governor Shaft
3	★391086	Seal-Oil (Magneto Side)	11	691328	Tube-Breather	718	230192	Pin-Locating
8	495735	Breather Assembly	186	67218	Connector-Hose (Vacuum Line)	1058	274789	Owner's Manual
Note 495734 Sparkplug Used on Type No(s). 1144, 1151.			306	690499	Shield-Cylinder			
			307	94930	Screw (Cylinder Shield)			

★ Included in Engine Gasket Set-Ref. No. 358.
 Δ Included in Valve Gasket Set-Ref. No.1095.

◆ Included in Carburetor Gasket Set-Ref. No. 977.
 ● Included in Carburetor Overhaul Kit-Ref. No.121.

28S700 to 28S799



REF. NO.	PART NO.	DESCRIPTION	REF. NO.	PART NO.	DESCRIPTION	REF. NO.	PART NO.	DESCRIPTION
5	691165	Head-Cylinder	53	690227	Stud (Carburetor)	830	691095	Stud (Rocker Arm)
7	Δ★273280	Gasket-Cylinder Head	54	691148	Screw (Intake Manifold)	868	Δ★690968	Seal-Valve
13	690360	Screw (Cylinder Head)	185	94010	Nut (Air Cleaner Base)	883	Δ★272293	Gasket-Exhaust
33	495856	Valve-Exhaust	192	492160	Adjuster-Rocker Arm	914	690960	Screw (Rocker Arm Cover)
34	495857	Valve-Intake	238	262836	Cap-Valve	1022	Δ★272475	Gasket-Rocker Cover
35	691279	Spring-Valve (Intake)	337	491055	Sparkplug	1023	692492	Cover-Rocker Arm
36	691279	Spring-Valve (Exhaust)	Note			1023A	691192	Cover-Rocker Arm
40	224641	Retainer-Valve	691043 Sparkplug Used on Type No(s). 1149, 1150.			1026	494432	Rod-Push (Intake)
45	690564	Tappet-Valve	383	89838	Wrench-Sparkplug	Note		
50	690193	Manifold-Intake	617	Δ★692138	O-Ring Seal (Intake Manifold)	495136 Rod-Push (Exhaust)		
51★◆	273650	Gasket-Intake	635	280872	Boot-Sparkplug	1029	224554	Arm-Rocker
						1034	690822	Guide-Push Rod

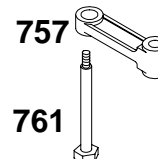
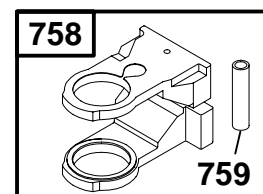
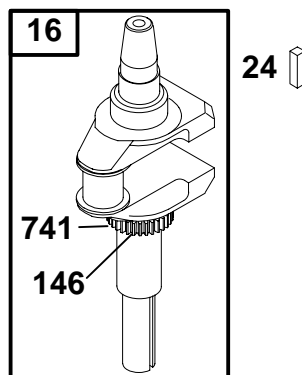
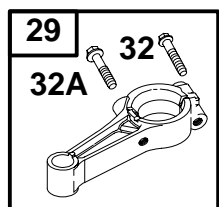
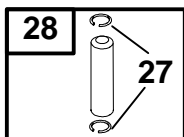
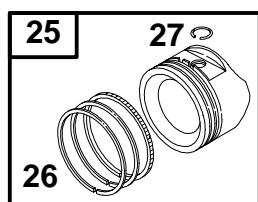
★ Included in Engine Gasket Set-Ref. No. 358.

Δ Included in Valve Gasket Set-Ref. No.1095.

◆ Included in Carburetor Gasket Set-Ref. No. 977.

● Included in Carburetor Overhaul Kit-Ref. No.121.

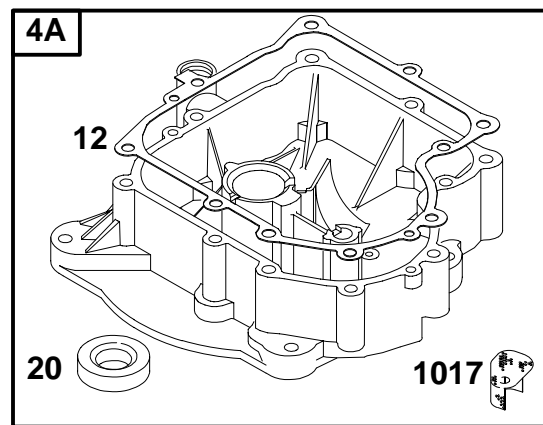
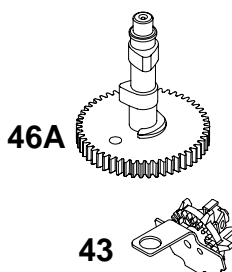
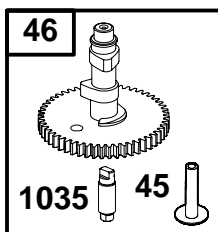
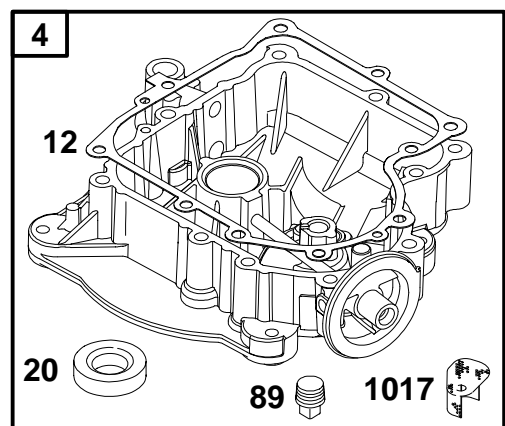
28S700 to 28S799



REF. NO.	PART NO.	DESCRIPTION	REF. NO.	PART NO.	DESCRIPTION	REF. NO.	PART NO.	DESCRIPTION
16	690136	Crankshaft (Used After Code Date 98063000). ———— Note ———— 495162 Crankshaft (Used Before Code Date 98070100).	27	691299	Lock–Piston Pin	32	692852	Screw (Connecting Rod) (Used After Code Date 98063000). ———— Note ————
24	222698	Key–Flywheel	28	498319	Pin–Piston (Standard) ———— Note ———— 498320 Pin–Piston (.005" O. S.)		690356	Screw (Connecting Rod 1 7/8 Long) (Used Before Code Date 98070100).
25	499284	Piston Assy–Standard (Standard) ———— Note ———— 499288 Piston Assembly (.010" O.S.) 499292 Piston Assembly (.020" O.S.) 499296 Piston Assembly (.030" O.S.)	29	692419	Rod–Connecting (Standard) (Used After Code Date 98063000). ———— Note ———— 494504 Rod– Connecting (Standard) (Used Before Code Date 98070100).	32A	690348	Screw (Connecting Rod 1 5/8 Long) (Used Before Code Date 98070100).
26	495854	Ring Set (Standard) ———— Note ———— 495852 Ring Set (.010" O.S.) 495851 Ring Set (.020" O.S.) 495855 Ring Set (.030" O.S.)		692420	Rod– Connecting (.020" Undersize) (Used After Code Date 98063000). 495490 Rod– Connecting (.020" Undersize) (Used Before Code Date 98070100).	146	94196	Key–Timing
					741	691284	Gear–Timing	
					757	213998	Link–Counterweight	
					758	692423	Counterweight	
					759	691239	Pin–Counterweight	
					761	691096	Screw (Counterweight)	

★ Included in Engine Gasket Set-Ref. No. 358.
 Δ Included in Valve Gasket Set-Ref. No.1095.

◆ Included in Carburetor Gasket Set-Ref. No. 977.
 ● Included in Carburetor Overhaul Kit-Ref. No.121.



15

22

15

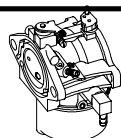
REF. NO.	PART NO.	DESCRIPTION	REF. NO.	PART NO.	DESCRIPTION	REF. NO.	PART NO.	DESCRIPTION
4	693582	Sump-Engine (Used After Code Date 98063000).	15	94880	Plug-Oil Drain ———— Note ———	46	693450	Camshaft (Used After Code Date 98063000).
4A	496742	Sump-Engine (Used Before Code Date 98070100).		94239	Plug-Oil Drain Used on Type No(s). 1148.	46A	692422	Camshaft (Used Before Code Date 98070100).
		———— Note ———	20	★291675	Seal-Oil (PTO Side)			———— Note ———
		494238 Sump-Engine Used on Type No(s). 1149, 1150.	22	692125	Screw (Engine Sump)		692421	Camshaft Used on Type No(s). 1149, 1150.
12	★271916	Gasket-Crankcase (.015", Standard)	43	490815	Slinger-Governor/Oil	89	690283	Plug-Oil (Oil Pressure Switch)
		———— Note ———	45	690564	Tappet-Valve	1017	690770	Screen-Oil Pump
		★271997 Gasket-Crankcase (.005")				1035	693784	Shaft-Pump (Used After Code Date 98063000).
		★271996 Gasket-Crankcase (.009")						

★ Included in Engine Gasket Set-Ref. No. 358.
 Δ Included in Valve Gasket Set-Ref. No.1095.

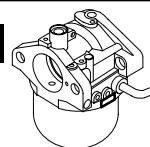
◆ Included in Carburetor Gasket Set-Ref. No. 977.
 ● Included in Carburetor Overhaul Kit-Ref. No.121.

28S700 to 28S799

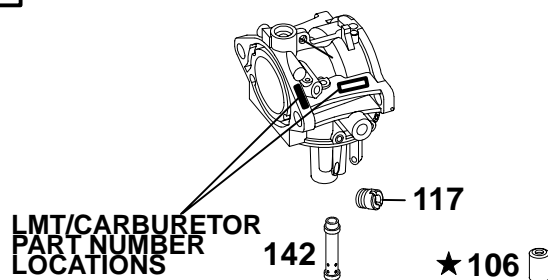
WALBRO



NIKKI

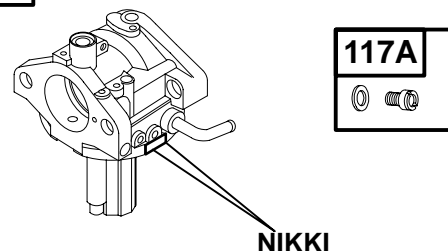


125



SEE NEXT PAGE FOR COMPONENT SERVICE

125A



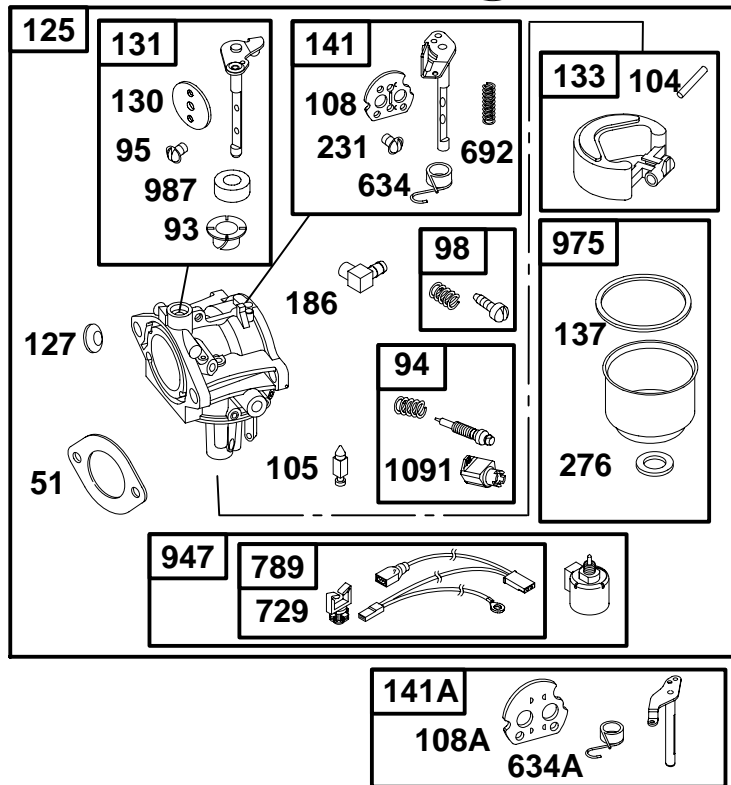
★ REQUIRES SPECIAL TOOLS TO INSTALL. SEE REPAIR INSTRUCTION MANUAL.

REF. NO.	PART NO.	DESCRIPTION	REF. NO.	PART NO.	DESCRIPTION	REF. NO.	PART NO.	DESCRIPTION
106	●231854	Seat-Inlet (Gravity Feed) ———— Note ——— ●231856 Seat-Inlet (Pump Feed) Used on Type No(s). 1144, 1151.	117A	●695415	Jet-Main (Standard) ———— Note ——— ●695416 Jet-Main (High Altitude)	125A		Carburetor (Nikki) (Service with Walbro Carburetor)
117	●692408	Jet-Main (Standard) ———— Note ——— ●692411 Jet-Main (High Altitude)	125	690194	Carburetor (For Choke A Matic and Manual Choke) ———— Note ——— 693194 Carburetor (For Choke A Matic and Manual Choke) Used on Type No(s). 1144, 1151.	142	●692412	Nozzle-Carburetor

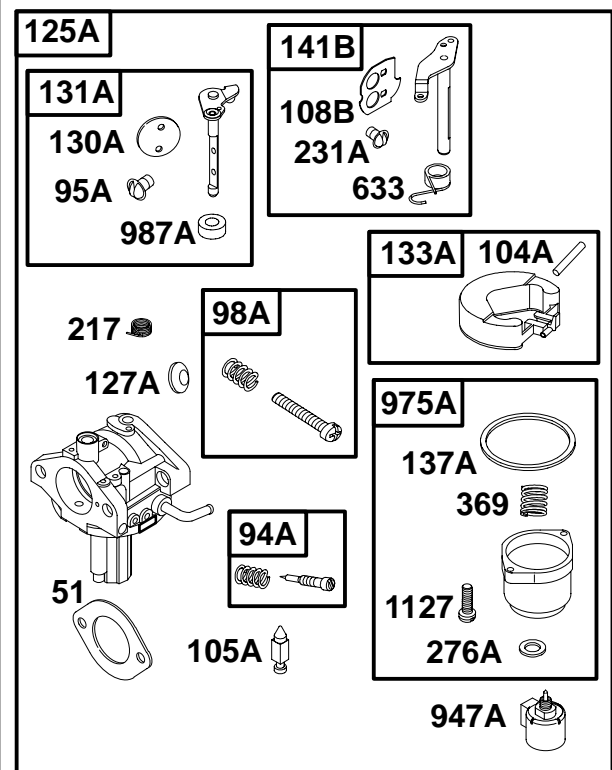
★ Included in Engine Gasket Set-Ref. No. 358.
△ Included in Valve Gasket Set-Ref. No.1095.

◆ Included in Carburetor Gasket Set-Ref. No. 977.
● Included in Carburetor Overhaul Kit-Ref. No.121.

WALBRO



NIKKI



REF. NO.	PART NO.	DESCRIPTION	REF. NO.	PART NO.	DESCRIPTION	REF. NO.	PART NO.	DESCRIPTION
51★◆	273650	Gasket-Intake	125A		Carburetor (See Previous Page for Service)	231A	◆690718	Screw (Choke Valve)
93	690602	Bushing-Throttle Shaft	127	◆695005	Plug-Welch	276	◆281164	Washer-Sealing
94	498030	Kit-Idle Mixture	127A	◆690727	Plug-Welch	276A	◆695410	Washer-Sealing
94A	695425	Kit-Idle Mixture	130	224539	Valve-Throttle	369	695422	Spring-Float Bowl
95	◆94098	Screw (Throttle Valve)	130A	695418	Valve-Throttle	633	695414	Seal-Choke/Throttle Shaft
95A	◆690718	Screw (Throttle Valve)	131	494379	Kit-Throttle Shaft	634	◆690801	Spring/Seal Assembly (Manual Choke)
98	495800	Kit-Idle Speed	131A	695421	Kit-Throttle Shaft	634A	◆690802	Spring/Seal Assembly (Choke A Matic)
98A	695408	Kit-Idle Speed	133	494381	Float-Carburetor	692	690572	Spring-Detent
104	◆690525	Pin-Float Hinge	133A	694914	Float-Carburetor	729	691335	Clip-Wire
104A	◆694918	Pin-Float Hinge	137	◆281165	Gasket-Float Bowl	789	497708	Harness-Wiring
105	◆231855	Valve-Float Needle	137A	◆695426	Gasket-Float Bowl	947	497672	Solenoid-Fuel
105A	◆694922	Valve-Float Needle	141	495097	Kit-Choke Shaft (Manual Choke)	947A	695423	Solenoid-Fuel
108	690464	Valve-Choke (Manual Choke)	141A	495931	Kit-Choke Shaft (Choke A Matic)	975	495933	Bowl-Float
108A	692344	Valve-Choke (Choke A Matic)	141B	695420	Kit-Choke Shaft	975A	695417	Bowl-Float
108B	695419	Valve-Choke	186	493496	Connector-Hose	987	◆691326	Seal-Throttle Shaft
125		Carburetor (See Previous Page for Service)	217	695409	Spring-Choke Return	987A	◆281765	Seal-Throttle Shaft
			231	◆94098	Screw (Choke Valve)	1091	691333	Cap-Limiter
						1127	695407	Screw (Float Bowl)

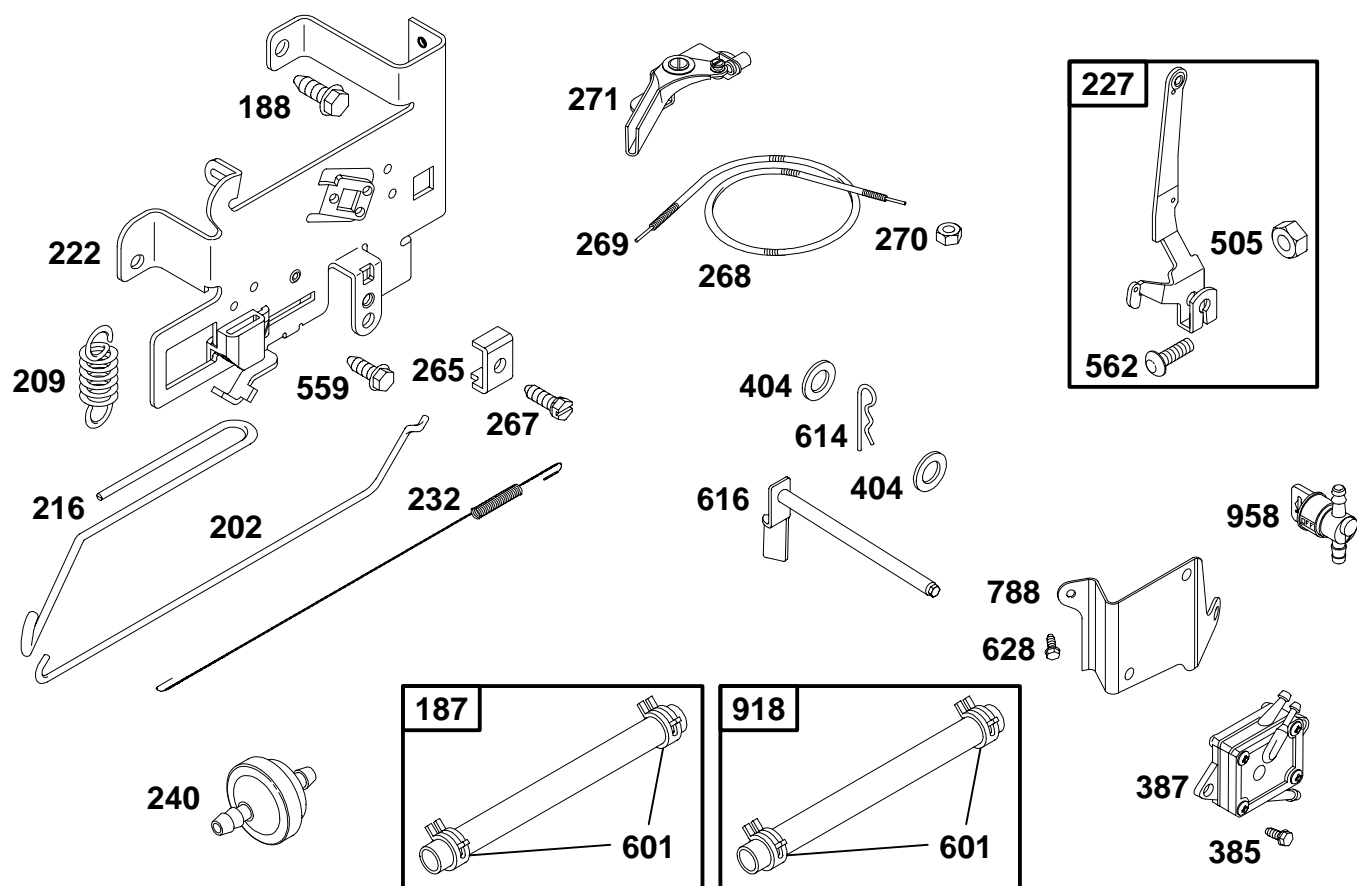
★ Included in Engine Gasket Set-Ref. No. 358.

△ Included in Valve Gasket Set-Ref. No.1095.

◆ Included in Carburetor Gasket Set-Ref. No. 977.

● Included in Carburetor Overhaul Kit-Ref. No.121.

28S700 to 28S799



REF. NO.	PART NO.	DESCRIPTION	REF. NO.	PART NO.	DESCRIPTION	REF. NO.	PART NO.	DESCRIPTION
187	691050	Line—Fuel (Cut to Required Length)	227	691374	Lever—Governor Control	505	691251	Nut (Governor Control Lever)
188	94929	Screw (Control Bracket)	232	262785	Spring—Governor Link	559	94896	Screw (Remote Choke Stop)
202	262767	Link—Mechanical Governor	240	298090	Filter—Fuel	562	691119	Bolt (Governor Control Lever)
209	260695	Spring—Governor	Note			601	95162	Clamp—Hose
		260871 Spring—Governor Used on Type No(s). 1144.	265	221535	Clamp—Casing	614	93306	Pin—Cotter
		261126 Spring—Governor Used on Type No(s). 1111.	267	94906	Screw (Casing Clamp)	616	495157	Crank—Governor
216	262766	Link—Choke	268	65616	Casing—Control Wire (Cut to Required Length)	628	94896	Screw (Fuel Pump Bracket)
222	694042	Bracket—Control (Used After Code Date 99010700).	269	26633	Wire—Control (Cut to Required Length)	788	692133	Bracket—Fuel Pump
		Note	270	63426	Nut (Control Wire Casing)	918	393815	Hose—Vacuum (Cut to Length)
		495611 Bracket—Control (Used Before Code Date 99010800).	271	290568	Lever—Control	958	494768	Valve—Fuel Shut Off
			385	690960	Screw (Fuel Pump)			
			387	808656	Pump—Fuel			
			404	94927	Washer (Governor Crank)			

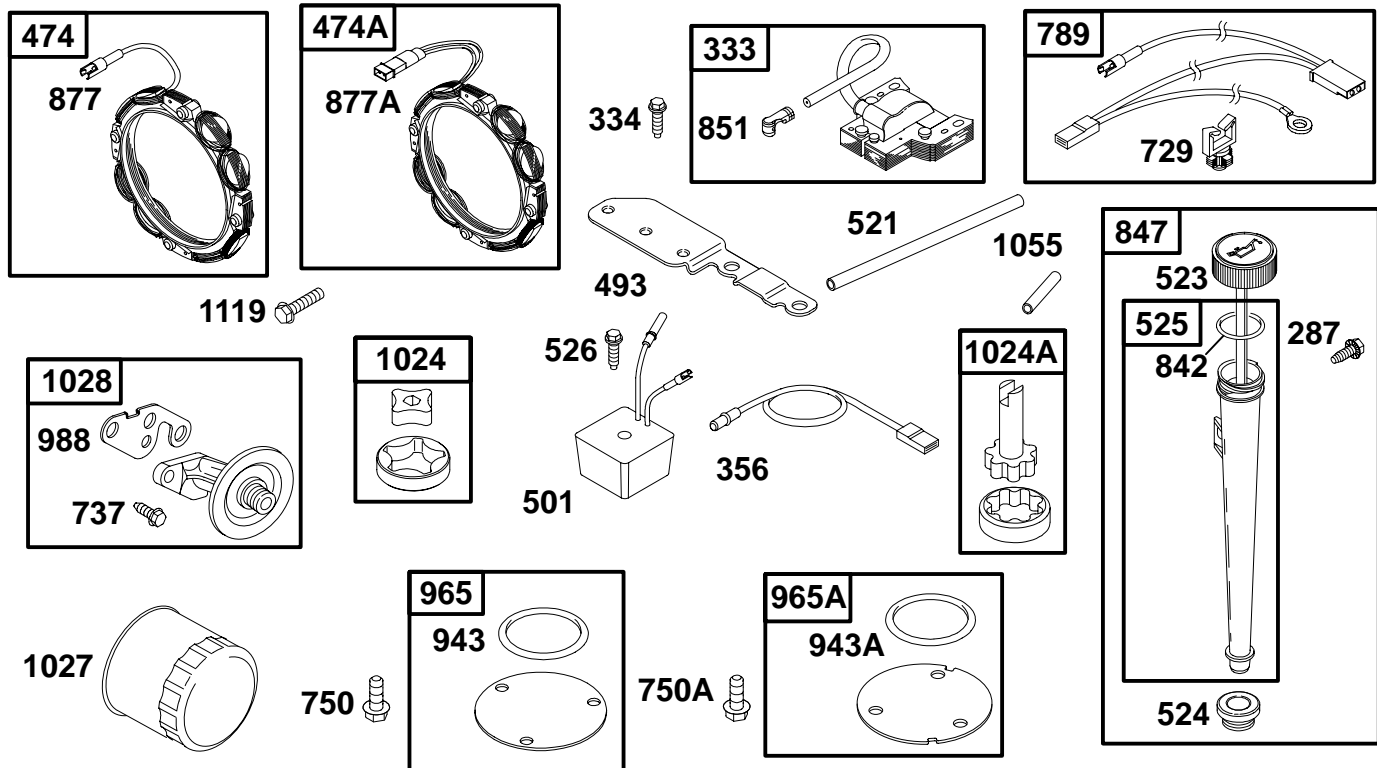
★ Included in Engine Gasket Set—Ref. No. 358.

△ Included in Valve Gasket Set—Ref. No. 1095.

◆ Included in Carburetor Gasket Set—Ref. No. 977.

● Included in Carburetor Overhaul Kit—Ref. No. 121.

28S700 to 28S799

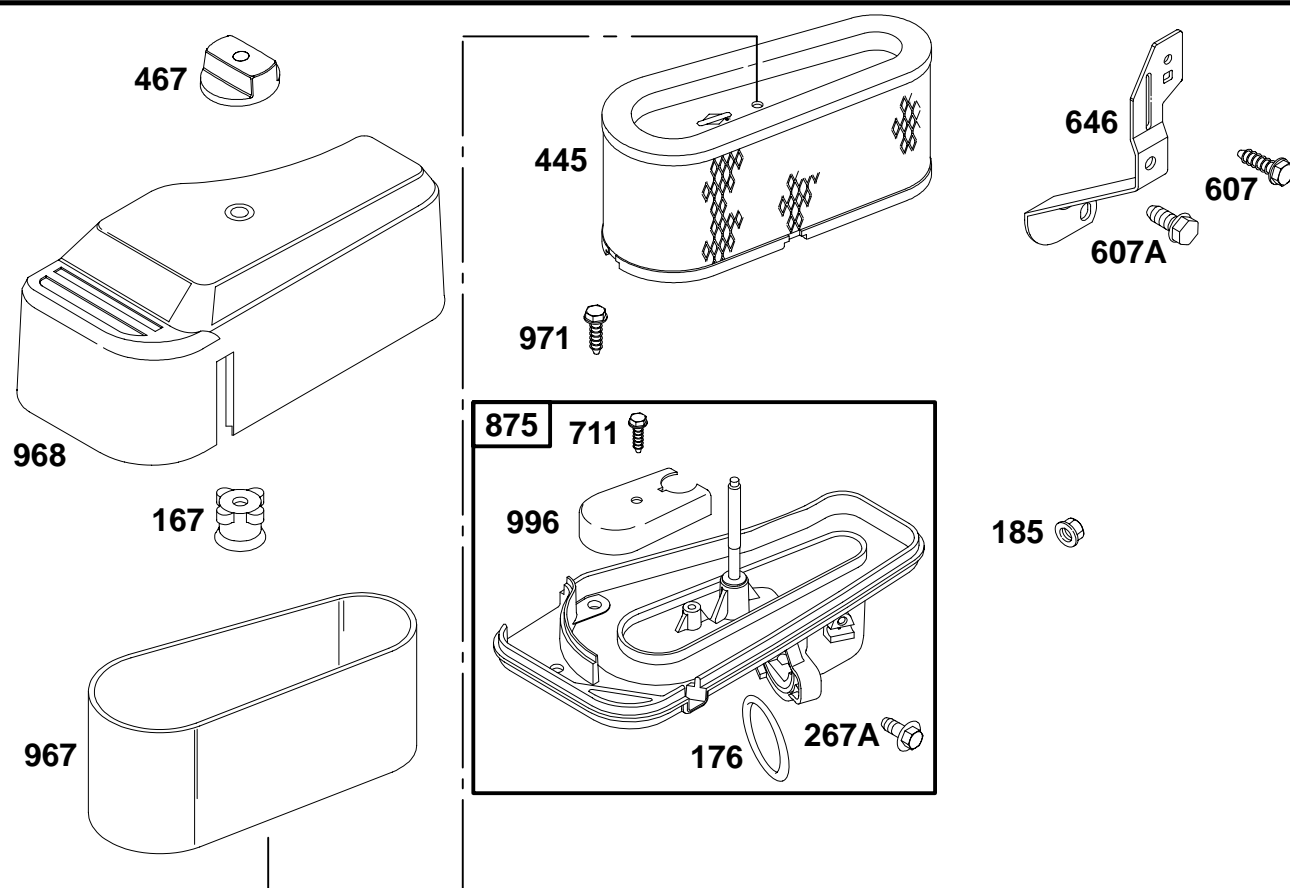


REF. NO.	PART NO.	DESCRIPTION	REF. NO.	PART NO.	DESCRIPTION	REF. NO.	PART NO.	DESCRIPTION
287	94903	Screw (Dipstick Tube)	750	691033	Screw (Oil Pump Cover) (Used After Code Date 98063000).	965	499613	Cover—Oil Pump (Used After Code Date 98063000).
333	495859	Armature—Magneto				965A	496745	Cover—Oil Pump (Used Before Code Date 98070100).
334	94731	Screw (Magneto Armature)	750A	94786	Screw (Oil Pump Cover) (Used Before Code Date 98070100).	988	★691317	Gasket—Oil Adapter
356	690807	Wire—Stop				1024	499054	Pump—Oil (Used After Code Date 98063000).
474	392595	Alternator	789	497708	Harness—Wiring	1024A	493884	Pump—Oil (Used Before Code Date 98070100).
474A	393474	Alternator	842	★270920	O—Ring Seal	1027	492932	Filter—Oil (Used After Code Date 98063000).
493	694475	Bracket—Mounting (Regulator) Used on Type No(s). 1111, 1151.	847	496415	Dipstick/Tube Assembly	Note _____		
501	491546	Regulator Used on Type No(s). 1111, 1151.	851	692424	Terminal—Sparkplug	491056	Filter—Oil (Used Before Code Date 98070100).	
521	690581	Shield—Cable	877	393537	Wire/Connector— Alternator	1028	496744	Adapter—Oil Filter
523	495230	Dipstick	877A	393456	Wire/Connector— Alternator	1055	690528	Tube—Oil Pump
524	★281370	Seal—Dipstick Tube	943	690589	O—Ring Seal (Oil Pump Cover) (Used After Code Date 98063000).	1119	93621	Screw (Alternator)
525	691398	Tube—Dipstick						
526	694476	Screw (Regulator) Used on Type No(s). 1111, 1151.	943A	★690604	O—Ring Seal (Oil Pump Cover) (Used Before Code Date 98070100).			
729	691335	Clip—Wire						
737	691118	Screw (Oil Filter Adapter)						

★ Included in Engine Gasket Set—Ref. No. 358.
 △ Included in Valve Gasket Set—Ref. No.1095.

◆ Included in Carburetor Gasket Set—Ref. No. 977.
 ● Included in Carburetor Overhaul Kit—Ref. No.121.

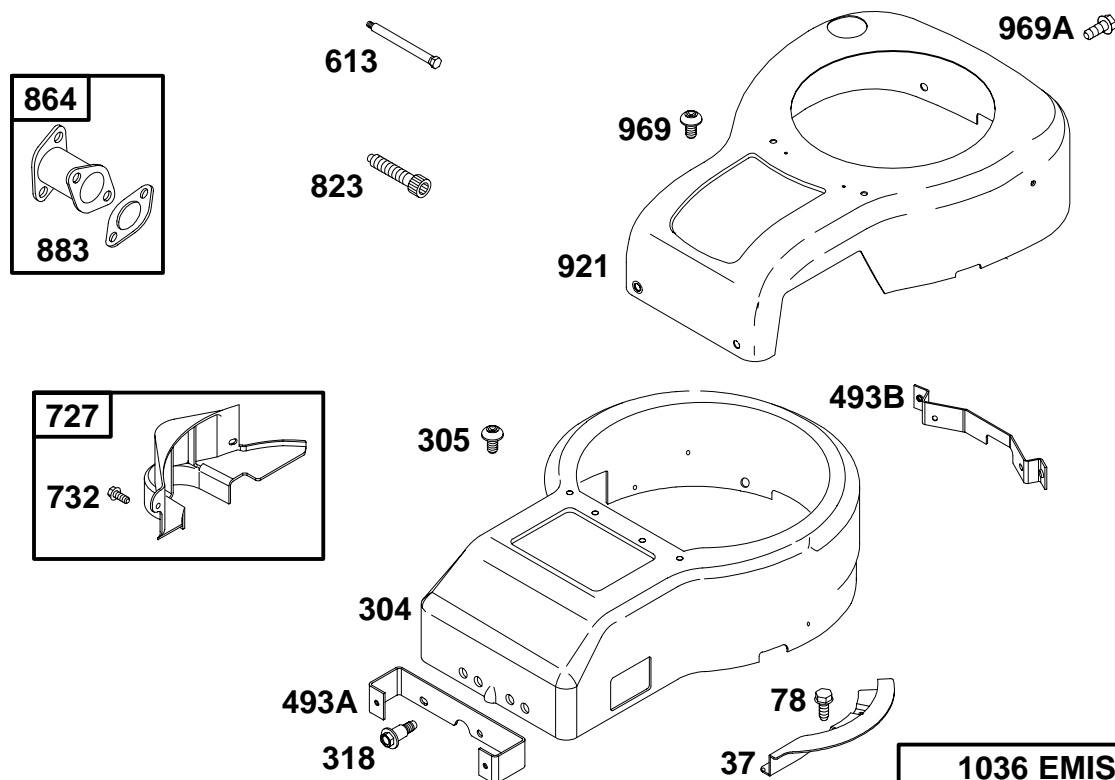
28S700 to 28S799



REF. NO.	PART NO.	DESCRIPTION	REF. NO.	PART NO.	DESCRIPTION	REF. NO.	PART NO.	DESCRIPTION
167	281051	Seal-Air Cleaner Nut	467	493903	Knob-Air Cleaner	711	690703	Screw
176	★281106	O-Ring Seal (Air Cleaner Base)	607	690703	Screw (Air Cleaner Brace)			(Carburetor Shield)
185	94010	Nut (Air Cleaner Base)	607A	94929	Screw (Air Cleaner Brace)	875	693686	Base-Air Cleaner
267A	693675	Screw (Casing Clamp)	646	690460	Brace-Air Cleaner	967	272403	Filter-Pre Cleaner
445	496894	Filter-Air Cleaner Cartridge				968	692502	Cover-Air Cleaner
						971	692129	Screw (Air Cleaner Base)
						996	690678	Shield-Carburetor

★ Included in Engine Gasket Set-Ref. No. 358.
 Δ Included in Valve Gasket Set-Ref. No.1095.

◆ Included in Carburetor Gasket Set-Ref. No. 977.
 ● Included in Carburetor Overhaul Kit-Ref. No.121.



REF. NO.	PART NO.	DESCRIPTION	REF. NO.	PART NO.	DESCRIPTION	REF. NO.	PART NO.	DESCRIPTION
37	690456	Guard-Flywheel	864	495864	Adapter-Muffler Used on Type No(s). 1149, 1150.	1036	695700	Label-Emissions (Used After Code Date 00063000).
78	94896	Screw (Flywheel Guard)	883	Δ★272293	Gasket-Exhaust	<p align="center">———— Note ———</p> <p>694997 Label-Emissions (Used Before Code Date 00070100 and After Code Date 99093000).</p> <p>694318 Label-Emissions (Used Before Code Date 99100100 and After Code Date 98123100).</p> <p>499364 Label-Emissions (Used Before Code Date 99010100).</p>		
304	690497	Housing-Blower (Black)	921	692493	Cover-Blower Housing (Red)			
305	690960	Screw (Blower Housing)	<p align="center">———— Note ———</p> <p>692679 Cover-Blower Housing (Black)</p>					
318	692127	Screw (Mounting Bracket)	969	690365	Screw (Blower Housing Cover)			
493A	690493	Bracket-Mounting (Front)	969A	690960	Screw (Blower Housing Cover)			
493B	690494	Bracket-Mounting (Rear)						
613	93927	Screw (Muffler)						
727	490324	Cover-Starter Drive						
732	94903	Screw (Starter Drive Cover)						
823	690363	Screw (Muffler Adapter)						

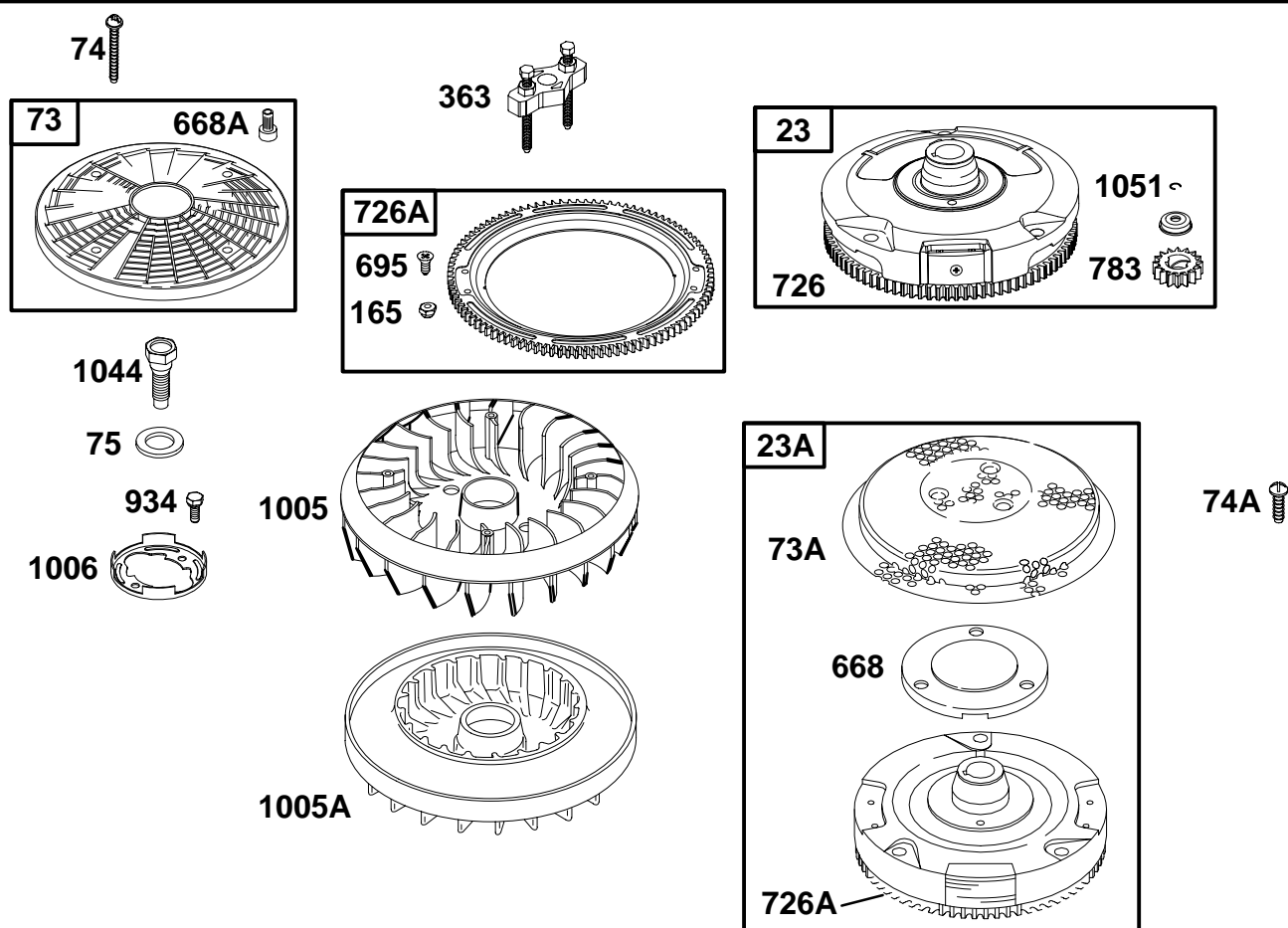
★ Included in Engine Gasket Set-Ref. No. 358.

Δ Included in Valve Gasket Set-Ref. No.1095.

◆ Included in Carburetor Gasket Set-Ref. No. 977.

● Included in Carburetor Overhaul Kit-Ref. No.121.

28S700 to 28S799



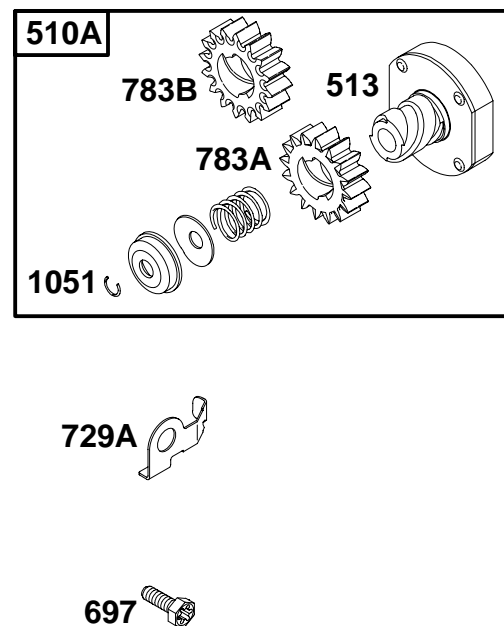
REF. NO.	PART NO.	DESCRIPTION	REF. NO.	PART NO.	DESCRIPTION	REF. NO.	PART NO.	DESCRIPTION
23	693557	Flywheel (Steel Ring Gear) Note 693556 Flywheel (Steel Ring Gear) Used on Type No(s). 1111, 1151.	74	691057	Screw (Rotating Screen) (Used After Code Date 00040200). Note 94821 Screw (Rotating Screen) (Used Before Code Date 00040300).	726A	399676	Gear-Ring (Aluminum) (Services Plastic Ring Gear Only)
23A	492326	Flywheel (Plastic Ring Gear)	74A	94626	Screw (Rotating Screen)	783	693713	Gear-Pinion (For Steel Ring Gear Only)
73	691055	Screen-Rotating (Used After Code Date 00040200). Note 494439 Screen- Rotating (Used Before Code Date 00040300).	75	225136	Washer (Flywheel)	934	94627	Screw (Fan Retainer)
73A	690492	Screen-Rotating	165	693148	Nut (Ring Gear)	1005	695492	Fan-Flywheel (Used After Code Date 00040200). Note 281400 Fan-Flywheel (Used Before Code Date 00040300).
			363	19203	Flywheel Puller	1005A	280687	Fan-Flywheel
			668	691323	Spacer	1006	690452	Retainer-Fan
			668A	691500	Spacer	1044	94673	Screw (Flywheel)
			695	693109	Screw (Ring Gear)	1051	263080	Ring-Retaining
			726		Gear-Ring (Steel) (See Ref. 23 For Service Information)			

★ Included in Engine Gasket Set-Ref. No. 358.

△ Included in Valve Gasket Set-Ref. No.1095.

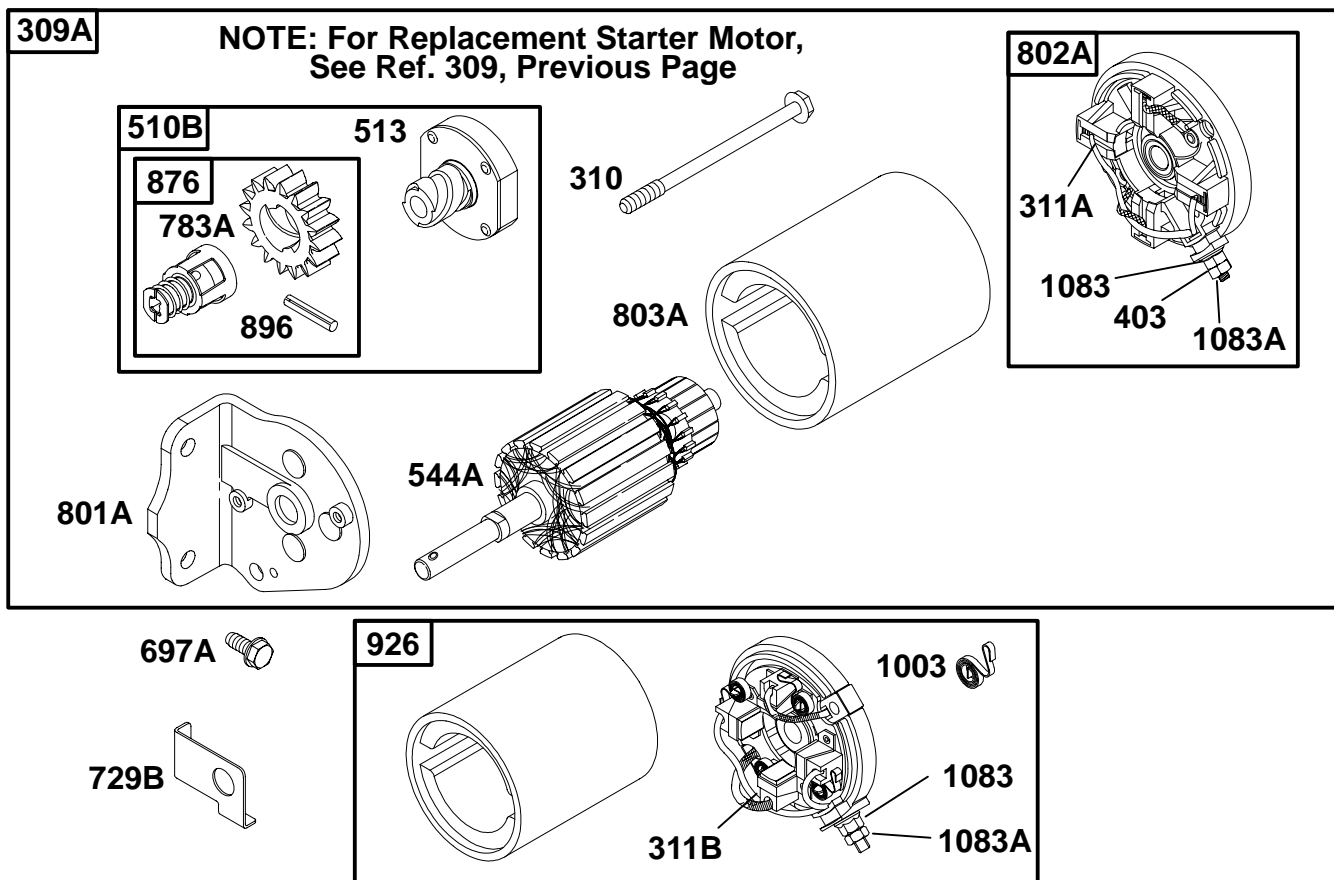
◆ Included in Carburetor Gasket Set-Ref. No. 977.

● Included in Carburetor Overhaul Kit-Ref. No.121.



- ◆ Included in Carburetor Gasket Set—Ref. No. 977.
- Included in Carburetor Overhaul Kit—Ref. No.121.

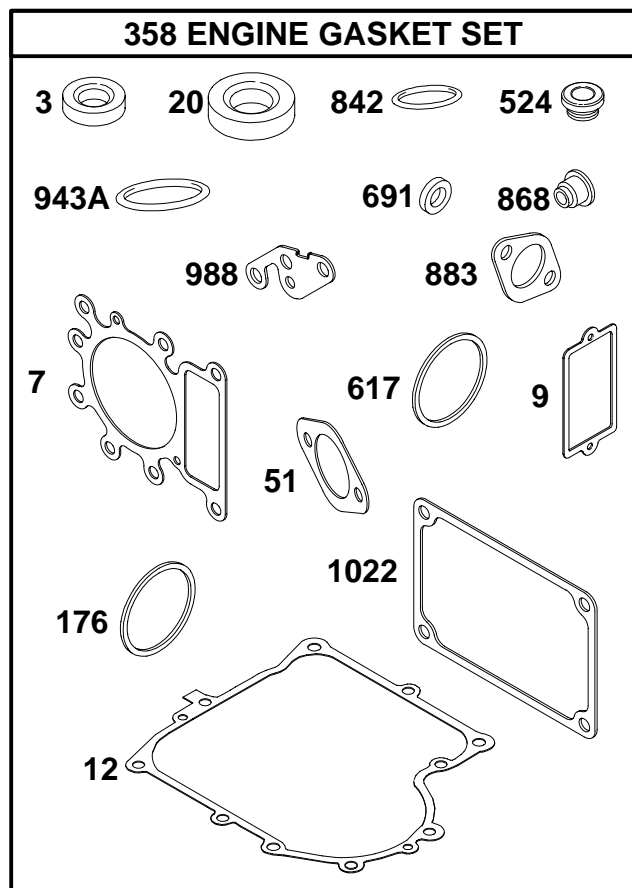
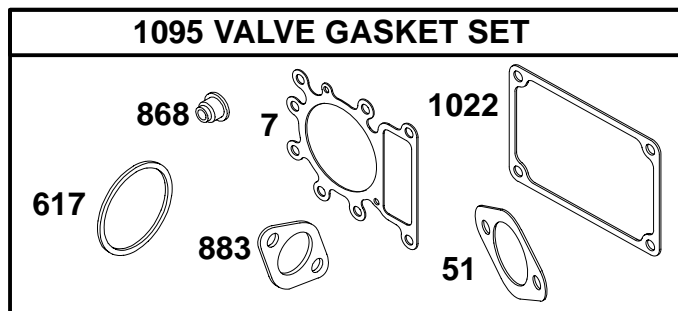
28S700 to 28S799



REF. NO.	PART NO.	DESCRIPTION	REF. NO.	PART NO.	DESCRIPTION	REF. NO.	PART NO.	DESCRIPTION
309A		Motor-Starter (For Replacement Starter Motor, See Ref 309, Previous Page)	513	398003	Clutch-Drive	803A	398159	Housing-Starter (For 3 5/8 Housing Length)
310	690323	Bolt (Starter Motor) (3 5/8 Housing Length) —— Note ——	544A	390837	Armature-Starter (For 3 5/8 Housing Length) —— Note ——			
		691263 Bolt (Starter Motor) (4 3/8 Housing Length)			490309 Armature-Starter (For 4 3/8 Housing Length)	876	495877	Kit-Pinion Spring
		692329 Bolt (Starter Motor) (4 9/16 Housing Length)	697A	94627	Screw (Drive Cap)	896	94288	Pin-Drive Retainer
311A	395538	Brush Set (For 3 5/8 Housing Length)	729B	224723	Clip-Wire	926	498233	Kit-Housing/Cap (For 4 9/16 Housing Length)
311B	490311	Brush Set (For 4 9/16 Housing Length)	783A	693059	Gear-Pinion (For Aluminum Ring Gear Only)	1003	490316	Spring-Brush (For 4 9/16 Housing Length)
403	690288	Washer (End Cap)	801A	394856	Cap-Drive	1083	94010	Nut (End Cap)
510B	495878	Drive-Starter	802A	395537	Cap-End (For 3 5/8 Housing Length) —— Note ——	1083A	93715	Nut (End Cap)
					494988 Cap-End (For 4 3/8 Housing Length)			

★ Included in Engine Gasket Set-Ref. No. 358.
 △ Included in Valve Gasket Set-Ref. No.1095.

◆ Included in Carburetor Gasket Set-Ref. No. 977.
 ● Included in Carburetor Overhaul Kit-Ref. No.121.



REF. NO.	PART NO.	DESCRIPTION	REF. NO.	PART NO.	DESCRIPTION	REF. NO.	PART NO.	DESCRIPTION
3	★391086	Seal—Oil (Magneto Side)	20	★291675	Seal—Oil (PTO Side)	691	★491323	Seal—Governor Shaft
7	Δ★273280	Gasket—Cylinder Head	51	★◆273650	Gasket—Intake	842	★270920	O—Ring Seal
9	★27803	Gasket—Breather	176	★281106	O—Ring Seal (Air Cleaner Base)	868	Δ★690968	Seal—Valve
12	★271916	Gasket—Crankcase (.015", Standard)	358	691580	Gasket Set—Engine	883	Δ★272293	Gasket—Exhaust
		Note	524	★281370	Seal—Dipstick Tube	943A	★690604	O—Ring Seal (Oil Pump Cover) (Used Before Code Date 98070100).
		★271997 Gasket— Crankcase (.005")	617	Δ★692138	O—Ring Seal (Intake Manifold)	988	★691317	Gasket—Oil Adapter
		★271996 Gasket— Crankcase (.009")				1022	Δ★272475	Gasket—Rocker Cover
						1095	691581	Gasket Set—Valve

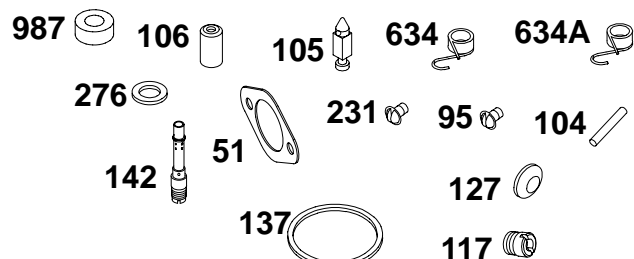
★ Included in Engine Gasket Set—Ref. No. 358.
 Δ Included in Valve Gasket Set—Ref. No. 1095.

◆ Included in Carburetor Gasket Set—Ref. No. 977.
 ● Included in Carburetor Overhaul Kit—Ref. No. 121.

28S700 to 28S799

WALBRO

121 CARBURETOR OVERHAUL KIT

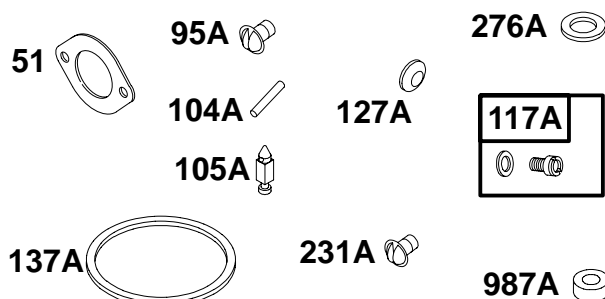


977 CARBURETOR GASKET SET

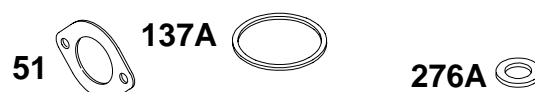


NIKKI

121A CARBURETOR OVERHAUL KIT



977A CARBURETOR GASKET SET



REF. NO.	PART NO.	DESCRIPTION	REF. NO.	PART NO.	DESCRIPTION	REF. NO.	PART NO.	DESCRIPTION
51★◆	273650	Gasket-Intake	117	◆692408	Jet-Main (Standard)	137A	◆695426	Gasket-Float Bowl
95	◆94098	Screw (Throttle Valve)			Note	142	◆◆692412	Nozzle-Carburetor
95A	◆690718	Screw (Throttle Valve)		◆692408	Jet-Main (High Altitude)	231	◆94098	Screw (Choke Valve)
104	◆690525	Pin-Float Hinge	117A	◆695415	Jet-Main (Standard)	231A	◆690718	Screw (Choke Valve)
104A	◆694918	Pin-Float Hinge			Note	276	◆◆281164	Washer-Sealing
105	◆231855	Valve-Float Needle		◆695416	Jet-Main (High Altitude)	276A	◆◆695410	Washer-Sealing
105A	◆694922	Valve-Float Needle	121	690191	Kit-Carburetor Overhaul	634	◆690801	Spring/Seal Assembly (Manual Choke)
106	◆231854	Seat-Inlet (Gravity Feed)	121A	695427	Kit-Carburetor Overhaul	634A	◆690802	Spring/Seal Assembly (Choke A Matic)
		Note	127	◆695005	Plug-Welch	977	690192	Gasket Set-Carburetor
		◆231856 Seat-Inlet (Pump Feed)	127A	◆690727	Plug-Welch	977A	695428	Gasket Set-Carburetor
		Used on Type No(s). 1144, 1151.	137	◆◆281165	Gasket-Float Bowl	987	◆691326	Seal-Throttle Shaft
						987A	◆281765	Seal-Throttle Shaft

★ Included in Engine Gasket Set-Ref. No. 358.

△ Included in Valve Gasket Set-Ref. No.1095.

◆ Included in Carburetor Gasket Set-Ref. No. 977.

● Included in Carburetor Overhaul Kit-Ref. No.121.