

**288700 to 288799**

# **Illustrated Parts List**

## **Model Series**

### **288700 to 288799**

**TYPE NUMBERS**

0101, 0110, 0116,  
0118, 0170, 0604,  
0670, 1118, 1143,  
1170.

**TO FIND****THE CORRECT NUMBER OF THE PART YOU NEED:  
FOLLOW THE INSTRUCTIONS BELOW**

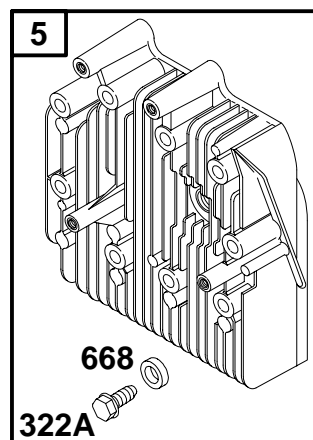
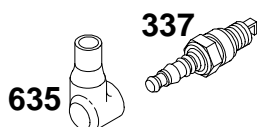
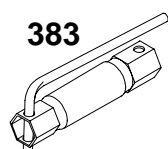
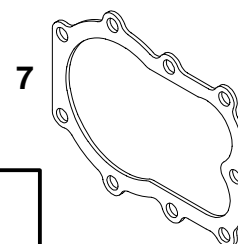
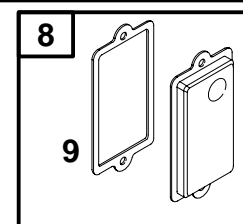
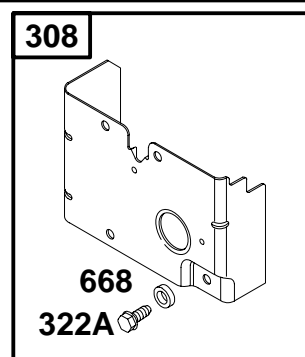
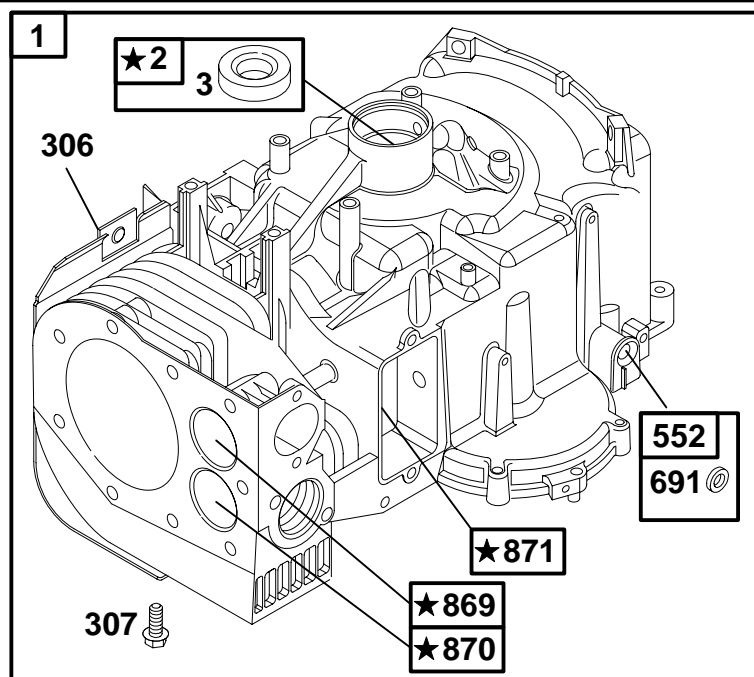
- A. Refer to Engine Model, Type and Code Number that is stamped on the blower housing of engine. Engine type numbers such as 0123 01 are listed only as 0123 in most instances. The two digits (01 or 02, etc.) to the right of the space may be required for more accurate parts identification in some instances. Select the Illustrated Parts List covering the correct Model Series and Type Number.
- B. Refer to the Illustrations and compare the original part with Illustration. The number next to the illustration is the Reference Number. Assemblies include all parts shown in frames. All parts shown in assembly frames having individual reference numbers can be purchased separately.
- C. After the Reference Number has been identified, refer to the Numerical text, where Reference and Primary Part Number are listed. **THE PRIMARY PART IS USED ON ALL TYPE NUMBERS EXCEPT THOSE TYPE NUMBERS UNDER "NOTE."**
- D. If a "Note" appears below the Primary Part Number, it means that this part differs from the Primary Part for certain types. If your Type number is listed under "Note," order the part referred to at the "Note."
- E. If your Engine Type Number does not appear after any part number listed under "Note," use the Primary Part Number.
- F. For Engine Type Numbers not covered by this book, check other Parts Lists having the same engine model or contact your source of supply.

PRINTED IN U.S.A.



COPYRIGHT by BRIGGS & STRATTON CORPORATION  
All rights reserved. No part of this material may be reproduced or transmitted, in any form or by any means, electronic or mechanical, including photocopying, recording or by any information storage and retrieval system, without permission in writing from Briggs & Stratton Corporation.

## 288700 to 288799



★ **REQUIRES SPECIAL TOOLS TO INSTALL. SEE REPAIR INSTRUCTION MANUAL.**

**1019 LABEL KIT**

**1058 OWNER'S MANUAL**

REF. NO.	PART NO.	DESCRIPTION	REF. NO.	PART NO.	DESCRIPTION	REF. NO.	PART NO.	DESCRIPTION
1	496413	Cylinder Assembly	322A	94881	Screw	1019	491252	Label Kit
2	399265	Bushing/Seal Kit			(Cylinder Head Cover)	1058	273681	Owner's Manual
3	★391086	Oil Seal	337	802592	Spark Plug			(Emission)
		(Magneto Side)	383	89838	Spark Plug Wrench			(Used After Code Date
5	494240	Cylinder Head	552	491986	Governor Crank			97063000).
7	★Ø271866	Cylinder Head Gasket			Bushing			————— <b>Note</b> —————
8	495735	Breather Assembly	635	66538	Spark Plug Boot			<b>273131</b> Owner's
9	★Ø27803	Breather Gasket	668	690510	Spacer			Manual
10	691666	Screw			(Cylinder Cover)			(Emission)
		(Breather Assembly)	691	★491323	Governor Shaft Seal			(Used Before Code
11	280100	Breather Tube	869	261463	Valve Seat			Date 97070100).
13	94622	Screw			(Intake)			—————
		(Cylinder Head)	870	262924	Valve Seat			<b>272697</b> Owner's
306	224545	Shield–Cylinder			(Exhaust)			Manual
307	94930	Screw	871	261961	Guide Bushing			(Non–Emission)
		(Cylinder Shield)			(Exhaust Valve)			
308	491490	Cylinder Head Cover			————— <b>Note</b> —————			
322	94786	Screw			<b>231218</b> Guide Bushing			
		(Cylinder Head Cover)			(Intake Valve)			

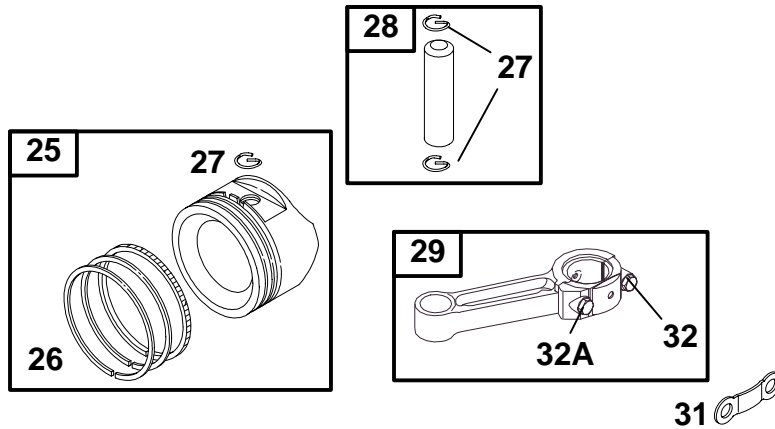
★ Included in Engine Gasket Set-Ref. 358.

Ø Included in Valve Overhaul Gasket Set-Ref. 1095.

● Included in Carburetor Overhaul Kit-Ref. 121.

◆ Included in Carburetor Gasket Set-Ref. 977.

## 288700 to 288799

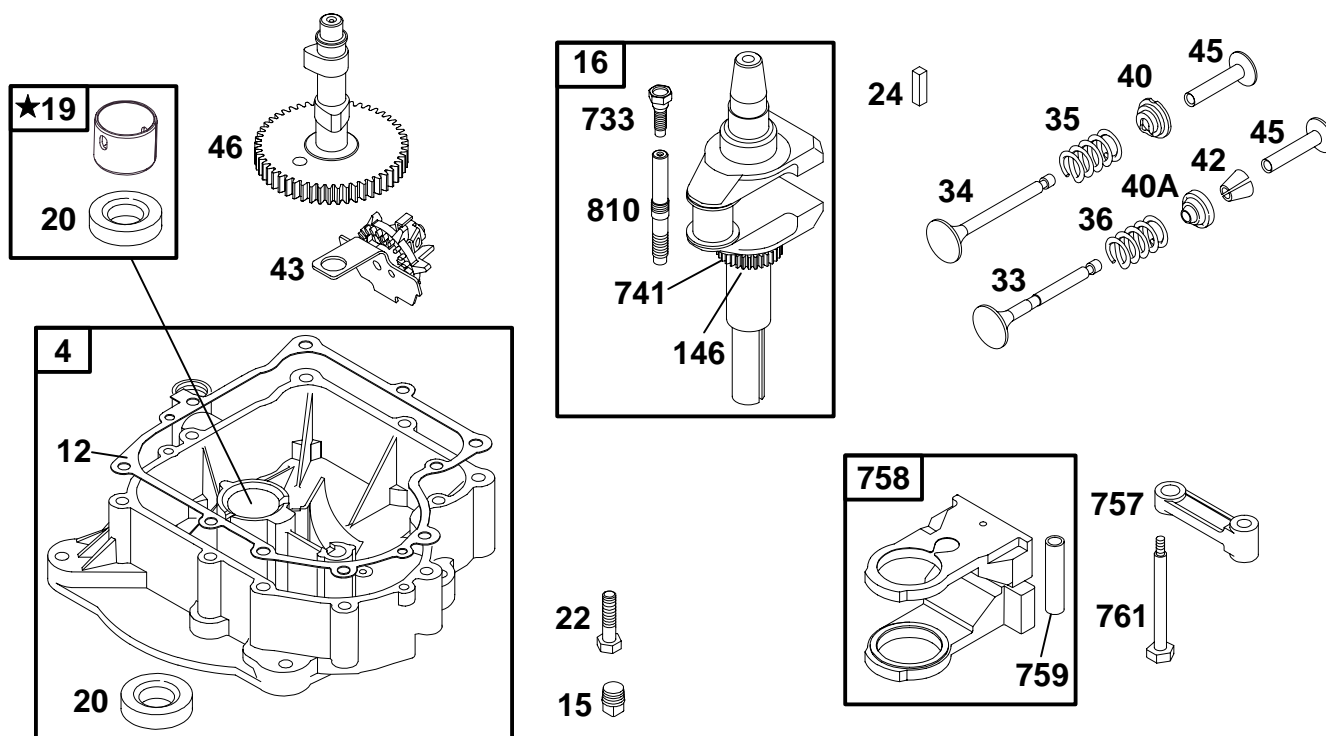


REF. NO.	PART NO.	DESCRIPTION	REF. NO.	PART NO.	DESCRIPTION	REF. NO.	PART NO.	DESCRIPTION			
25	499282	Piston Assembly (Standard) (Used After Code Date 96082700).	26	499996	Ring Set (Standard) (Used After Code Date 96082700).	27	691299	Piston Pin Lock (Used After Code Date 95101500).			
		<div>Note</div> <b>394661</b> Piston Assembly (Standard) (Used Before Code Date 96082800).			<div>Note</div> <b>391780</b> Ring Set (Standard) (Used Before Code Date 96082800).			<div>Note</div> <b>260924</b> Piston Pin Lock (Used Before Code Date 95101600).			
		<b>499288</b> Piston Assy. (.010" O.S.) (Used After Code Date 96082700).			<b>392331</b> Ring Set (Standard Chrome)			<b>28</b>	498319	Piston Pin (Standard) (Used After Code Date 95101500).	
		<b>394662</b> Piston Assy. (.010" O.S.) (Used Before Code Date 96082800).			<b>499997</b> Ring Set (.010" O.S.) (Used After Code Date 96082700).			<div>Note</div> <b>299691</b> Piston Pin (Standard) (Used Before Code Date 95101600).			
		<b>499292</b> Piston Assy. (.020" O.S.) (Used After Code Date 96082700).			<b>391781</b> Ring Set (.010" O.S.) (Used Before Code Date 96082800).			<b>498320</b> Piston Pin (.005" O.S.) (Used After Code Date 95101500).			
		<b>394663</b> Piston Assy. (.020" O.S.) (Used Before Code Date 96082800).			<b>499998</b> Ring Set (.020" O.S.) (Used After Code Date 96082700).			<b>391286</b> Piston Pin (.005" O.S.) (Used Before Code Date 95101600).			
		<b>499296</b> Piston Assy. (.030" O.S.) (Used After Code Date 96082700).			<b>391782</b> Ring Set (.020" O.S.) (Used Before Code Date 96082800).			29	494504	Connecting Rod (Standard)	
		<b>394664</b> Piston Assy. (.030" O.S.) (Used Before Code Date 96082800).			<b>499999</b> Ring Set (.030" O.S.)					<div>Note</div> <b>495490</b> Conn. Rod (.020" Undersize)	
		31			222299			Rod Screw Lock	32	690356	Screw (1 7/8" Long, Connecting Rod)
								32A			690348

★ Included in Engine Gasket Set—Ref. 358.  
 Ø Included in Valve Overhaul Gasket Set—Ref. 1095.

● Included in Carburetor Overhaul Kit—Ref. 121.  
 ◆ Included in Carburetor Gasket Set—Ref. 977.

## 288700 to 288799



REF. NO.	PART NO.	DESCRIPTION	REF. NO.	PART NO.	DESCRIPTION	REF. NO.	PART NO.	DESCRIPTION
4	494238	Engine Sump	19	490666	Bushing/Seal Kit	741	691284	Timing Gear (Used After Code Date 92080200).
12	★271916	Crankcase Gasket (.015" Thick, Std.)	20	★291675	Oil Seal (PTO Side)	<b>Note</b> 262135 Timing Gear (Used Before Code Date 92080300).		
		———— <b>Note</b> ————	22	692125	Screw (Engine Sump)	757	213998	Counterweight Link
		★271997 Crankcase Gasket (.005" Thick)	24	222698	Flywheel Key	758	399891	Counterweight
		★271996 Crankcase Gasket (.009" Thick)	33	262246	Exhaust Valve	759	691239	Counterweight Pin
15	94239	Oil Drain Plug	34	262247	Intake Valve	761	691096	Screw (Counterweight)
		———— <b>Note</b> ————	35	65906	Valve Spring (Intake)	810	231828	Crankshaft Extension
		94880 Oil Drain Plug Used on Type No(s). 0170, 0679, 1170.	36	26828	Valve Spring (Exhaust)			
16	495162	Crankshaft (Used After Code Date 95073100).	40	221596	Valve Retainer			
		———— <b>Note</b> ————	40A	292260	Valve Retainer			
		498971 Crankshaft (Used Before Code Date 95080100).	42	494553	Valve Keeper			
			43	490815	Governor/Oil Slinger			
			45	262248	Valve Tappet			
			46	212897	Camshaft			
			146	94196	Timing Key			
			733	94673	Screw (Crankshaft Extension)			

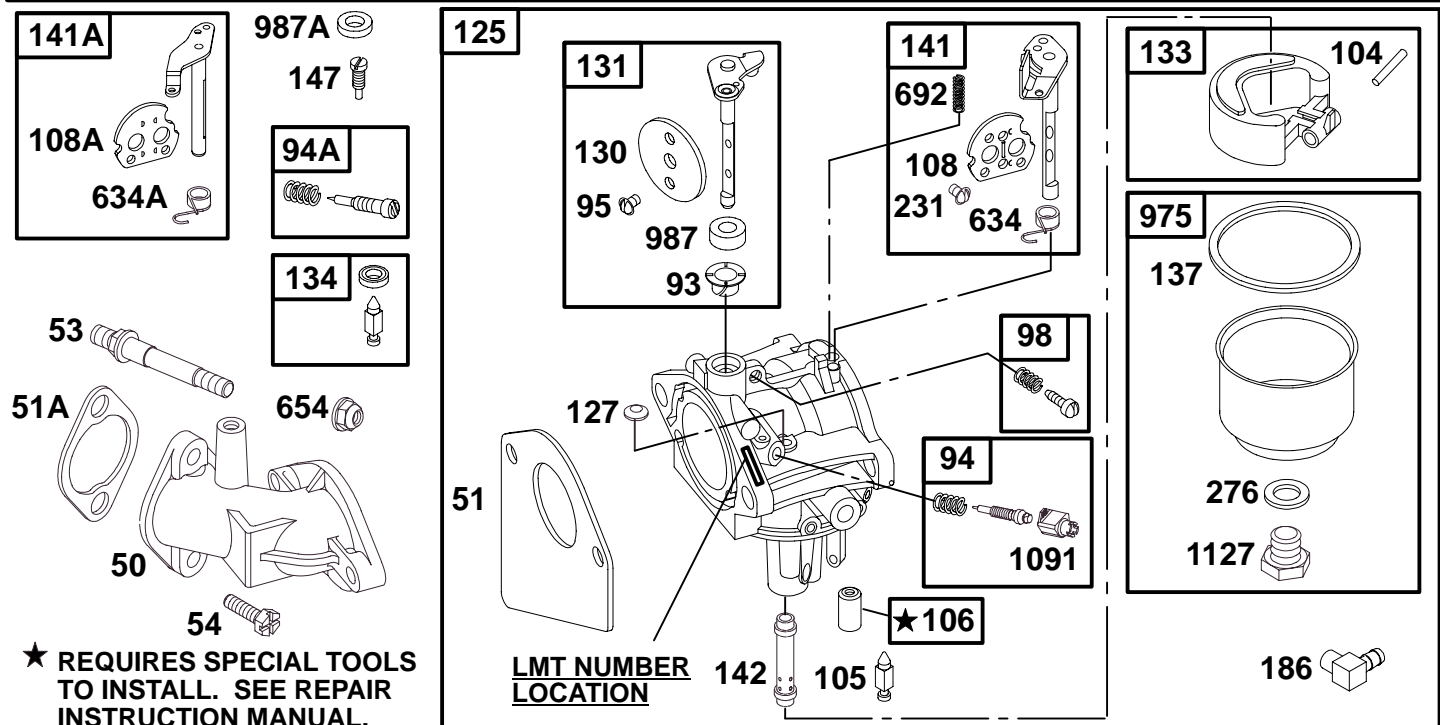
★ Included in Engine Gasket Set—Ref. 358.

Ø Included in Valve Overhaul Gasket Set—Ref. 1095.

● Included in Carburetor Overhaul Kit—Ref. 121.

◆ Included in Carburetor Gasket Set—Ref. 977.

# 288700 to 288799



## THIS CARBURETOR SERVICES BOTH CHOKE-A-MATIC AND MANUAL CHOKE SYSTEMS

REF. NO.	PART NO.	DESCRIPTION	REF. NO.	PART NO.	DESCRIPTION	REF. NO.	PART NO.	DESCRIPTION
50	213819	Intake Manifold			(Used Before Code Date 96072600).	147	●497472	Pilot Jet
51	●272465	Intake Gasket			Welch Plug			(LMT 37, 41, 77, 81)
51A	★272554	Intake Gasket	127	●	(Sold in Kit Only)	186	493496	Hose Connector
53	691098	Stud				231	●94098	Screw
		(Carburetor)	130	224539	Throttle Valve			(Choke Valve)
54	94913	Screw	131	494379	Throttle Shaft Kit	276	●281164	Sealing Washer
		(Intake Manifold)	133	494381	Carburetor Float	634	●690801	Spring and Seal Assembly
93	690602	Throttle Shaft Bushing	134	●494788	Needle/Seat Kit (LMT 5)			(Manual Choke)
94	498030	Idle Mixture Kit				634A	●690802	Spring and Seal Assembly
94A	494383	Idle Mixture Kit	137	●281165	Float Bowl Gasket			(Choke-A-Matic)
95	●94098	Screw	141	495097	Choke Shaft Kit (Manual Choke)			(Choke-A-Matic)
		(Throttle Valve)	141A	495931	Choke Shaft Kit (Choke A Matic)	654	94010	Nut
98	495800	Idle Speed Kit						(Carburetor)
104	●690525	Float Hinge Pin	142	●691434	Carburetor Nozzle (LMT 92, 96)	692	690572	Detent Spring
105	●231855	Float Needle Valve				975	495933	Float Bowl
106	●231854	Inlet Seat				987	●691326	Throttle Shaft Seal
		<b>Note</b>			<b>Note</b>	987A	●281167	Throttle Shaft Seal
		●280328 Inlet Seat (LMT 5)			●691425 Carburetor Nozzle			(LMT 5, 37, 41)
108	690464	Choke Valve			(LMT 5, 37, 41, 77, 81, 157)	1127	94642	Screw
108A	692344	Choke Valve			497737 Carburetor Nozzle			(Float Bowl)
125	498027	Carburetor (For Choke A Matic and Manual Choke) (Used After Code Date 96072500).			(High Altitude) (LMT 92, 96 )	1091	691333	Limiter Cap
		<b>Note</b>			497567 Carburetor Nozzle			
		495706 Carburetor (For Choke A Matic and Manual Choke)			(High Altitude) (LMT 5, 37, 41, 77, 81, 157)			

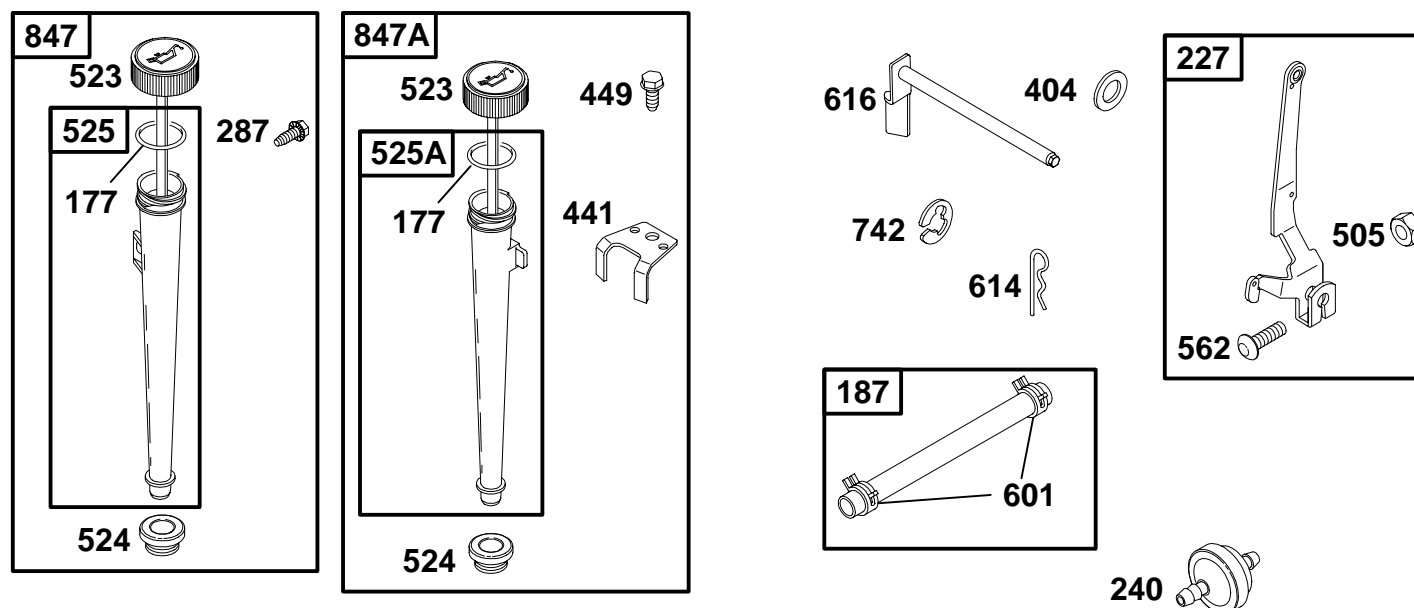
★ Included in Engine Gasket Set-Ref. 358.

Ø Included in Valve Overhaul Gasket Set-Ref. 1095.

● Included in Carburetor Overhaul Kit-Ref. 121.

◆ Included in Carburetor Gasket Set-Ref. 977.

## 288700 to 288799



REF. NO.	PART NO.	DESCRIPTION	REF. NO.	PART NO.	DESCRIPTION	REF. NO.	PART NO.	DESCRIPTION
177	★270920	O-Ring Seal (Dipstick)	404	94927	Washer (Governor Crank)	562	92613	Bolt (Governor Control Lever)
187	298049	Fuel Line (Cut to Required Length)	441	224390	Oil Fill Bracket	601	95162	Hose Clamp
227	691374	Governor Lever	449	94602	Screw (Oil Fill Bracket)	614	93306	Cotter Pin
240	298090	Fuel Filter	505	231082	Nut (Governor Control Lever)	616	495157	Governor Crank
		<b>Note</b>	523	495230	Dipstick	742	93307	E-Ring Retainer
		394358 Fuel Filter Used on Type No(s). 0110.	524	★281370	Dipstick Tube Seal	847	496415	Dipstick/Tube Assembly
287	94073	Screw (Dipstick Tube)	525	691398	Dipstick Tube	847A	490474	Dipstick/Tube Assembly
			525A	495768	Dipstick Tube			

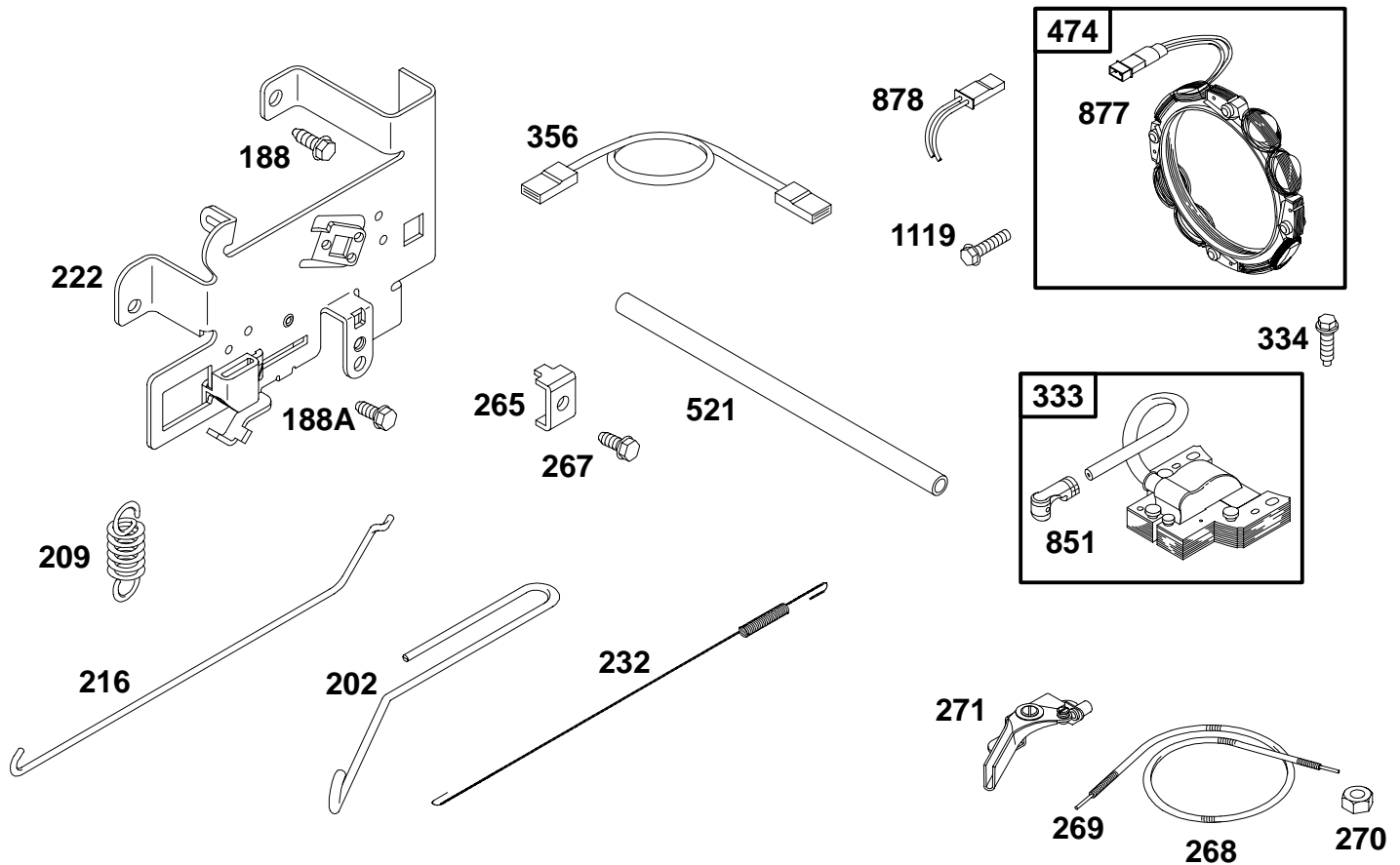
★ Included in Engine Gasket Set—Ref. 358.

Ø Included in Valve Overhaul Gasket Set—Ref. 1095.

● Included in Carburetor Overhaul Kit—Ref. 121.

◆ Included in Carburetor Gasket Set—Ref. 977.

## 288700 to 288799

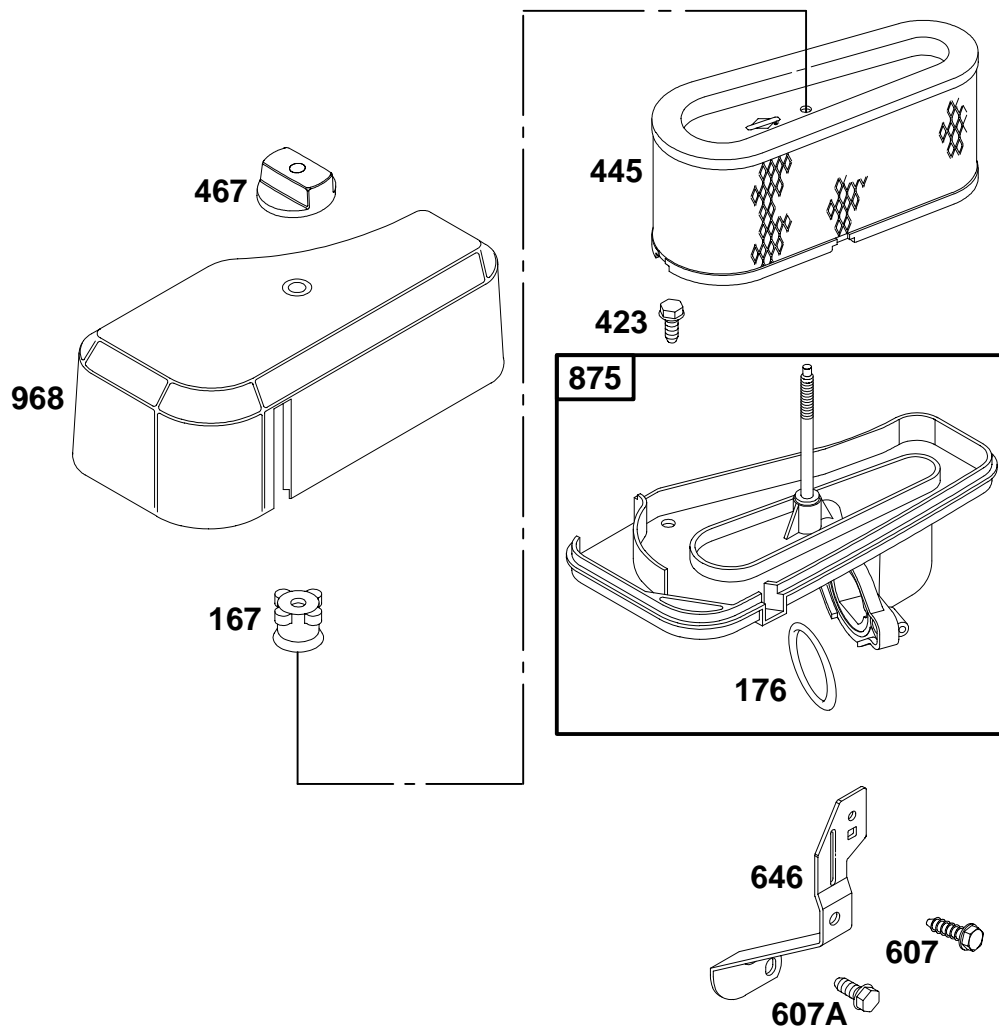


REF. NO.	PART NO.	DESCRIPTION	REF. NO.	PART NO.	DESCRIPTION	REF. NO.	PART NO.	DESCRIPTION
188	94929	Screw (Control Bracket)	265	221535	Casing Clamp	334	94731	Screw (Magneto Armature)
188A	94896	Screw (Control Bracket)	267	94906	Screw (Casing Clamp)	356	690799	Stop Wire
202	262767	Mechanical Governor Link	268	65616	Control Wire Casing (Cut to Required Length)	474	393474	Alternator
209	260871	Spring—Governor	269	26633	Control Wire (Cut to Required Length)	521	690581	Cable Shield
		<b>Note</b>	270	63426	Nut (Control Wire Casing)	851	493880	Spark Plug Terminal
		260695 Spring— Governor	271	290568	Control Lever	877	393456	Alternator/Wire Connector
216	262766	Choke Link	333	492341	Magneto Armature	878	393362	Alternator Harness
222	495611	Control Bracket				1119	93621	Screw (Alternator)
232	262785	Governor Link Spring						

★ Included in Engine Gasket Set—Ref. 358.  
 Ø Included in Valve Overhaul Gasket Set—Ref. 1095.

● Included in Carburetor Overhaul Kit—Ref. 121.  
 ◆ Included in Carburetor Gasket Set—Ref. 977.

## 288700 to 288799

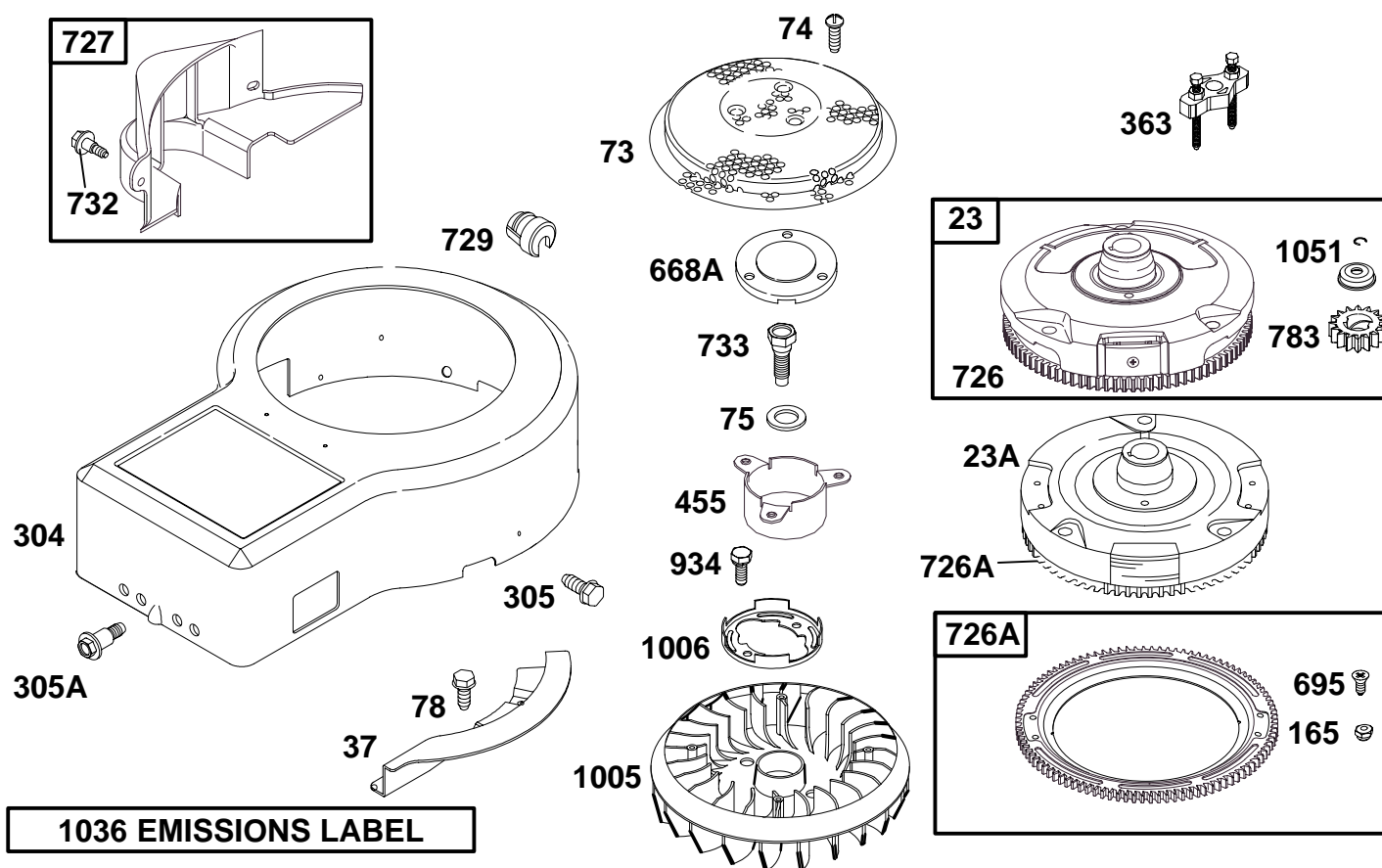


REF. NO.	PART NO.	DESCRIPTION	REF. NO.	PART NO.	DESCRIPTION	REF. NO.	PART NO.	DESCRIPTION
167	281051	Air Cleaner Stud Seal	607	94620	Screw (Air Cleaner Brace)	875	693376	Air Cleaner Base (Used After Code Date 98011300).
176	★Ø281106	O-Ring Seal (Air Cleaner Base)	607A	690703	Screw (Air Cleaner Brace)	<b>Note</b> <b>494237</b> Air Cleaner Base (Used Before Code Date 98091400).		
423	692126	Screw (Air Cleaner Base)	646	690460	Air Cleaner Brace	968	281104	Air Cleaner Cover
445	496894	A/C Cartridge Filter						
467	493903	Air Cleaner Knob						

★ Included in Engine Gasket Set—Ref. 358.  
 Ø Included in Valve Overhaul Gasket Set—Ref. 1095.

● Included in Carburetor Overhaul Kit—Ref. 121.  
 ◆ Included in Carburetor Gasket Set—Ref. 977.

## 288700 to 288799



REF. NO.	PART NO.	DESCRIPTION	REF. NO.	PART NO.	DESCRIPTION	REF. NO.	PART NO.	DESCRIPTION
23	693557	Flywheel (Steel Ring Gear)	305A	692127	Screw (Blower Housing)	934	94627	Screw (Fan Retainer)
23A	492326	Flywheel (Plastic Ring Gear)	363	19203	Flywheel Puller	1005	280687	Flywheel Fan
37	690456	Flywheel Guard	455	691173	Flywheel Cup	1006	690452	Fan Retainer
73	224517	Rotating Screen	668A	691323	Spacer	1036	694325	Emissions Label (Used After Code Date 98123100).
74	94626	Screw (Rotating Screen)	695	693109	Screw (Ring Gear)			_____ <b>Note</b> _____
75	225136	Washer (Flywheel)	726		Ring Gear (Steel) (See Ref. 23 for Service)			<b>499362</b> Emissions Label (Used After Code Date 97063000 and Before Code Date 99010100).
78	94896	Screw (Flywheel Guard)	726A	392134	Ring Gear (Aluminum) (Services Plastic Ring Gear Only)			<b>499361</b> Emissions Label (Used Before Code Date 97070100).
165	693148	Nut (Ring Gear)						
304	690846	Blower Housing (Used After Code Date 93071800).	727	490324	Starter Drive Cover			
		_____ <b>Note</b> _____	729	690596	Wire Clip			
		<b>494269</b> Housing—Blower (Used Before Code Date 93071900).	732	94073	Screw (Starter Drive Cover)	1051	263080	Retaining Ring
			733	94673	Screw (Crankshaft Extension)			
305	94786	Screw (Blower Housing)	783	693713	Pinion Gear (For Steel Ring Gear Only)			

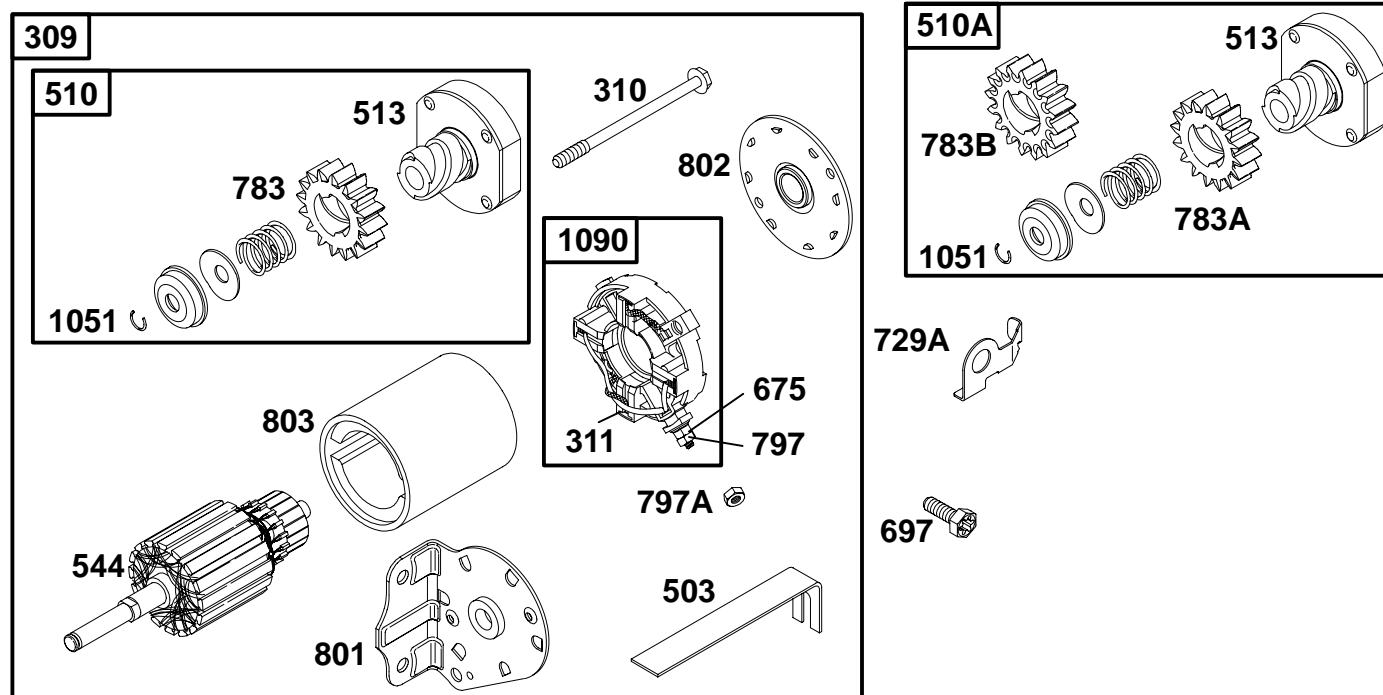
★ Included in Engine Gasket Set—Ref. 358.

⌀ Included in Valve Overhaul Gasket Set—Ref. 1095.

● Included in Carburetor Overhaul Kit—Ref. 121.

◆ Included in Carburetor Gasket Set—Ref. 977.

## 288700 to 288799



REF. NO.	PART NO.	DESCRIPTION	REF. NO.	PART NO.	DESCRIPTION	REF. NO.	PART NO.	DESCRIPTION
309	693551	Starter Motor (For Steel Ring Gear Only) <b>Note</b> 497595 Starter Motor (For Plastic Ring Gear Only) <b>Note</b> 693054 Starter Motor (For Aluminum Ring Gear Only)	510	693699	Starter Drive (Used With Steel Ring Gear)	783A	693059	Pinion Gear (For Aluminum Ring Gear Only)
310	690323	Bolt (Starter Motor)	510A	497606	Starter Drive (Used With Aluminum & Plastic Ring Gears)	783B	693058	Pinion Gear (For Plastic Ring Gear Only)
311	497608	Brush Set	513	398003	Drive Clutch	797	693167	Nut (Brush Retainer)
503	691532	Starter Strap	544	497603	Starter Armature	797A	92278	Nut (Brush Retainer)
			675	225137	Washer (Brush Retainer)	801	691429	Drive Cap
			697	94951	Screw (Drive Cap)	802	497607	End Cap
			729A	691224	Wire Clip	803	691427	Starter Housing
			783	693713	Pinion Gear (For Steel Ring Gear Only)	1051	263080	Retaining Ring
						1090	497605	Brush Retainer

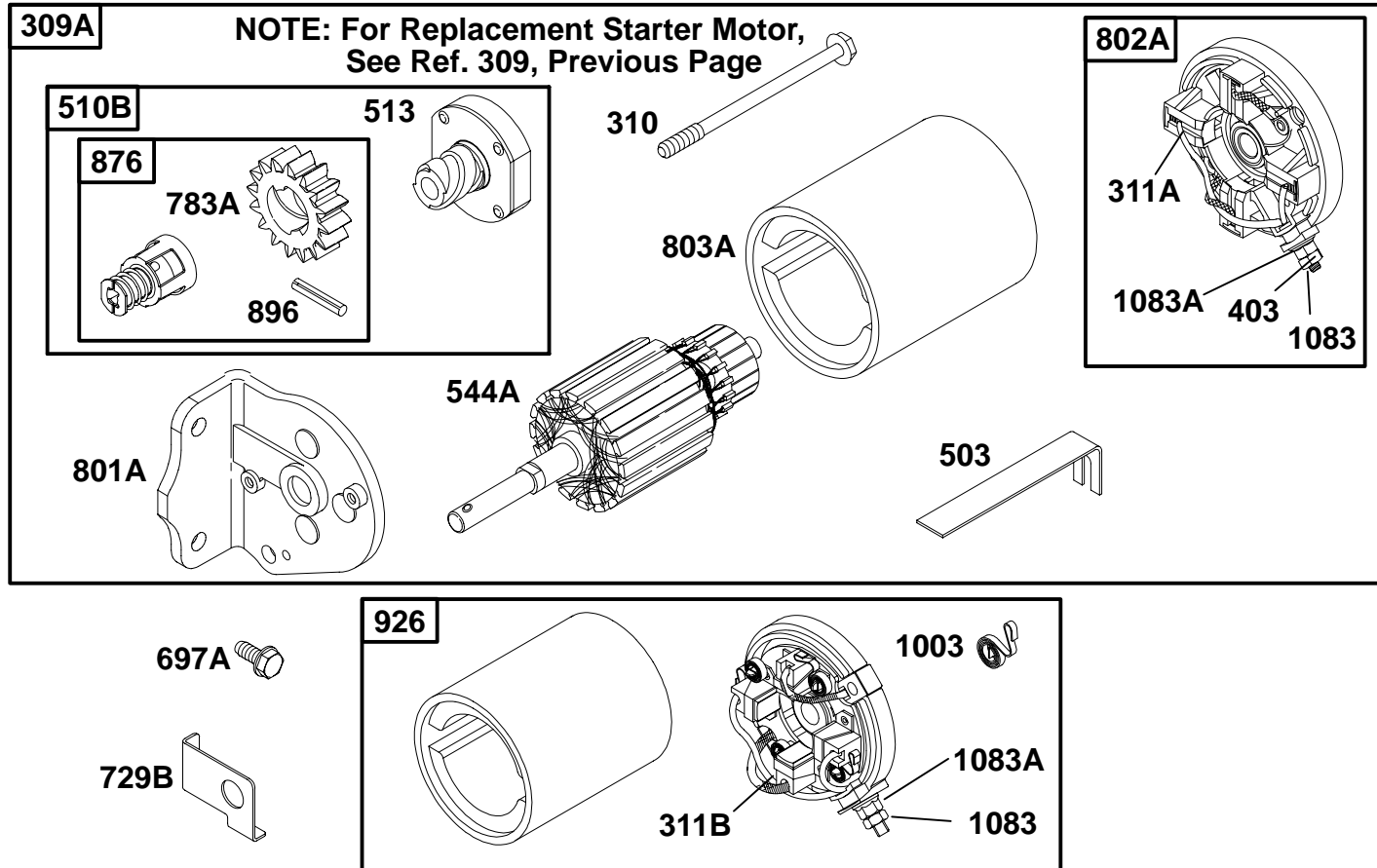
★ Included in Engine Gasket Set—Ref. 358.

Ø Included in Valve Overhaul Gasket Set—Ref. 1095.

● Included in Carburetor Overhaul Kit—Ref. 121.

◆ Included in Carburetor Gasket Set—Ref. 977.

## 288700 to 288799

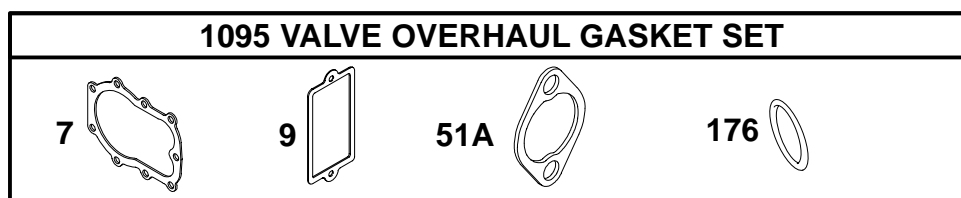
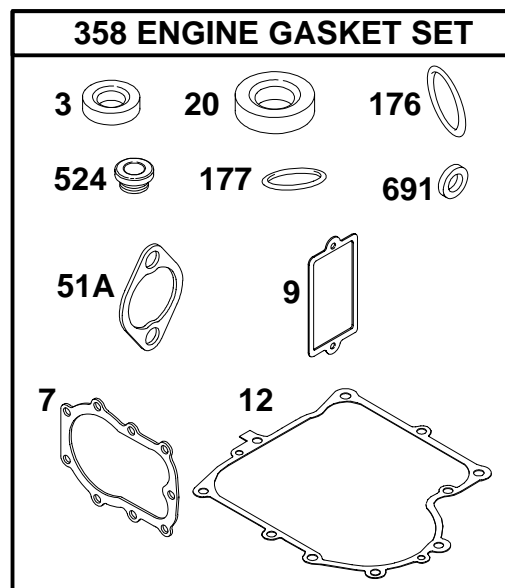
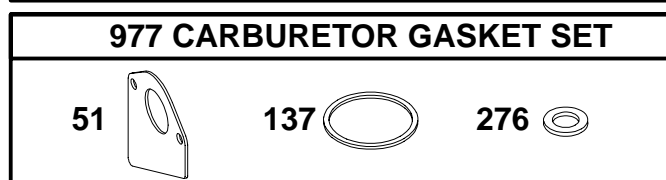
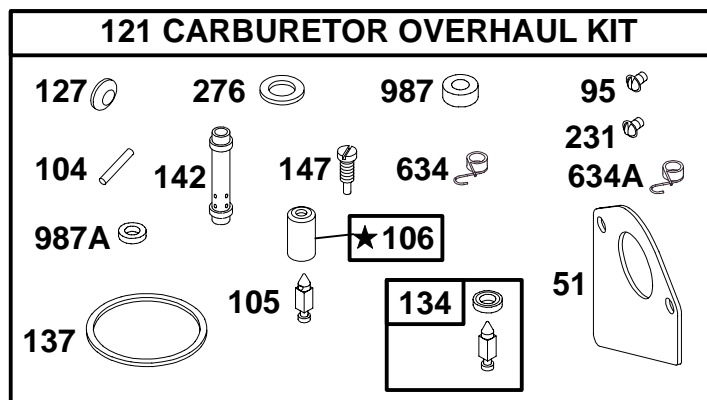


REF. NO.	PART NO.	DESCRIPTION	REF. NO.	PART NO.	DESCRIPTION	REF. NO.	PART NO.	DESCRIPTION
<b>309A</b>		Starter Motor For Replacement Starter Motor, See Ref 309, Previous Page.	<b>403</b>	<b>690288</b>	Washer (End Cap)	<b>803A</b>	<b>398159</b>	Starter Housing (For 3 5/8" Housing Length)
<b>310</b>	<b>690323</b>	Bolt (Starter Motor) (For 3 5/8" Housing Length)	<b>503</b>	<b>691532</b>	Starter Strap			<b>Note</b>
		<b>Note</b>	<b>510B</b>	<b>495878</b>	Starter Drive	<b>876</b>	<b>495877</b>	Gear Kit
		<b>691263</b> Bolt (Starter Motor) (For 4 3/8" Housing Length)	<b>513</b>	<b>398003</b>	Drive Clutch	<b>896</b>	<b>94288</b>	Drive Retainer Pin
		<b>94169</b> Bolt (Starter Motor) (For 4 9/16" Housing Length)	<b>544A</b>	<b>390837</b>	Starter Armature (For 3 5/8" Housing Length)	<b>926</b>	<b>498233</b>	Housing/Cap Kit (For 4 9/16" Hsg. Length)
<b>311A</b>	<b>395538</b>	Brush Set (For 3 5/8" Housing Length)			<b>Note</b>	<b>1003</b>	<b>490316</b>	Spring-Brush (For 4 9/16" Hsg. Length)
<b>311B</b>	<b>490311</b>	Brush Set (For 4 9/16" Housing Length)	<b>697A</b>	<b>94627</b>	Screw (Drive Cap)	<b>1083</b>	<b>93715</b>	Nut (End Cap)
			<b>729B</b>	<b>224723</b>	Wire Clip	<b>1083A</b>	<b>94010</b>	Nut (End Cap)
			<b>783A</b>	<b>693059</b>	Pinion Gear			
			<b>801A</b>	<b>394856</b>	Drive Cap			
			<b>802A</b>	<b>395537</b>	End Cap (For 3 5/8" Housing Length)			
					<b>Note</b>			
					<b>494988</b> End Cap (For 4 3/8" Housing Length)			

★ Included in Engine Gasket Set—Ref. 358.  
 ⌀ Included in Valve Overhaul Gasket Set—Ref. 1095.

● Included in Carburetor Overhaul Kit—Ref. 121.  
 ◆ Included in Carburetor Gasket Set—Ref. 977.

# 288700 to 288799



★ **REQUIRES SPECIAL TOOLS TO INSTALL. SEE REPAIR INSTRUCTION MANUAL.**

REF. NO.	PART NO.	DESCRIPTION	REF. NO.	PART NO.	DESCRIPTION	REF. NO.	PART NO.	DESCRIPTION
3	★391086	Oil Seal (Magneto Side)	121	499220	Carburetor Overhaul Kit (Used After Code Date 96072500). (LMT 92, 96)	147	●497472	Pilot Jet (LMT 37, 41, 77, 81)
7	★Ø271866	Cylinder Head Gasket				176	★Ø281106	O-Ring Seal (Air Cleaner Base)
9	★Ø27803	Breather Gasket				231	●94098	Screw (Choke Valve)
12	★271916	Crankcase Gasket (.015" Thick, Std.)				276	●281164	Sealing Washer
		————— <b>Note</b> —————				358	494241	Engine Gasket Set
		★271997 Crankcase Gasket (.005" Thick)			499231 Carburetor Overhaul Kit (Used After Code Date 96072500). (LMT 157)	524	★281370	Dipstick Tube Seal
		★271996 Crankcase Gasket (.009" Thick)			497481 Carburetor Overhaul Kit (Used Before Code Date 96072600).	634	●690801	Spring and Seal Assembly (Manual Choke)
20	★291675	Oil Seal (PTO Side)				634A	●690802	Spring and Seal Assembly (Choke-A-Matic)
51	●272465	Intake Gasket	127	●	Welch Plug (Sold in Kit Only)	691	★ 491323	Governor Shaft Seal
51A	★Ø272554	Intake Gasket	134	●494788	Needle/Seat Kit (LMT 5)	977	494385	Carburetor Gasket Set
95	●94098	Screw (Throttle Valve)	137	●281165	Float Bowl Gasket	987	●691326	Throttle Shaft Seal
104	●690525	Float Hinge Pin	142	●691434	Carburetor Nozzle (LMT 92, 96)	987A	●281167	Throttle Shaft Seal (LMT 5, 37, 41)
105	●231855	Float Needle Valve			————— <b>Note</b> —————	1095	498539	Valve Overhaul Gasket Set
106	●231854	Inlet Seat			●691425 Carburetor Nozzle (LMT 5, 37, 41, 77, 81, 157)			
		————— <b>Note</b> —————						
		●280328 Inlet Seat (LMT 5)						
177	★270920	O-Ring Seal (Dipstick)						

★ Included in Engine Gasket Set—Ref. 358.  
 Ø Included in Valve Overhaul Gasket Set—Ref. 1095.

● Included in Carburetor Overhaul Kit—Ref. 121.  
 ◆ Included in Carburetor Gasket Set—Ref. 977.