

## 19K400 to 19K499

# Illustrated Parts List

## Model Series

### 19K400 to 19K499

TYPE NUMBERS  
0110, 0111, 0114,  
0115.

#### TO FIND THE CORRECT NUMBER OF THE PART YOU NEED: FOLLOW THE INSTRUCTIONS BELOW

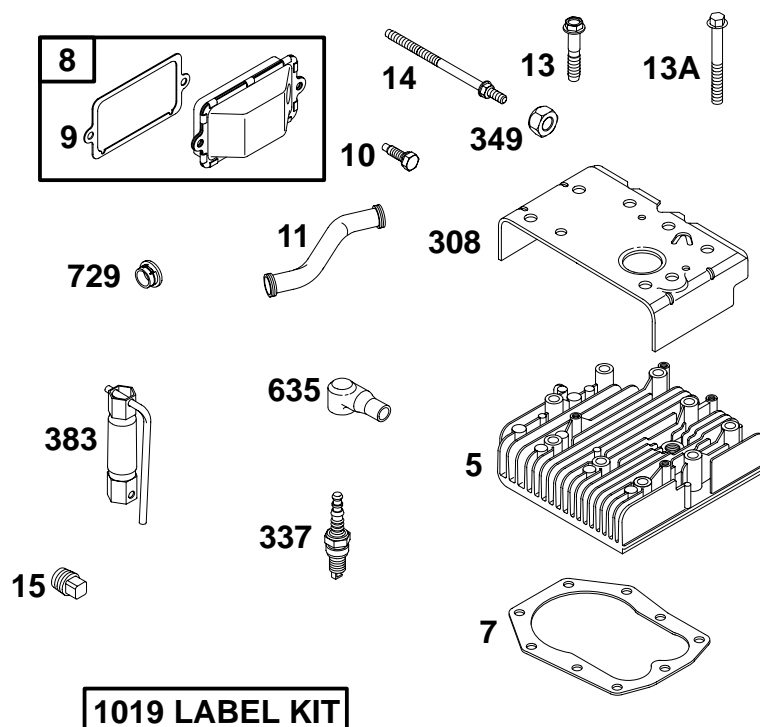
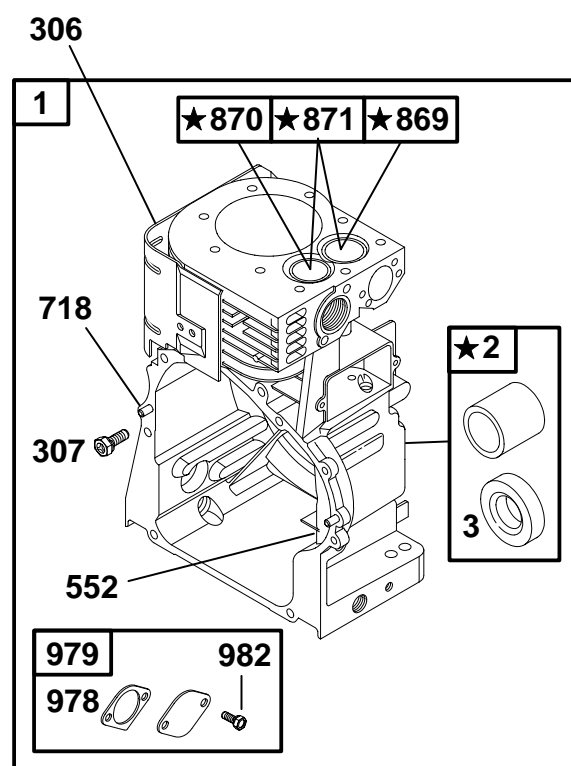
- A. Refer to Engine Model, Type and Code Number that is stamped on the blower housing of engine. Engine type numbers such as 0123 01 are listed only as 0123 in most instances. The two digits (01 or 02, etc.) to the right of the space may be required for more accurate parts identification in some instances. Select the Illustrated Parts List covering the correct Model Series and Type Number.
- B. Refer to the Illustrations and compare the original part with Illustration. The number next to the illustration is the Reference Number. Assemblies include all parts shown in frames. All parts shown in assembly frames having individual reference numbers can be purchased separately.
- C. After the Reference Number has been identified, refer to the Numerical text, where Reference and Primary Part Number are listed. **THE PRIMARY PART IS USED ON ALL TYPE NUMBERS EXCEPT THOSE TYPE NUMBERS UNDER "NOTE."**
- D. If a "Note" appears below the Primary Part Number, it means that this part differs from the Primary Part for certain types. If your Type number is listed under "Note," order the part referred to at the "Note."
- E. If your Engine Type Number does not appear after any part number listed under "Note," use the Primary Part Number.
- F. For Engine Type Numbers not covered by this book, check other Parts Lists having the same engine model or contact your source of supply.

PRINTED IN U.S.A.



COPYRIGHT by BRIGGS & STRATTON CORPORATION  
All rights reserved. No part of this material may be reproduced or transmitted, in any form or by any means, electronic or mechanical, including photocopying, recording or by any information storage and retrieval system, without permission in writing from Briggs & Stratton Corporation.

# 19K400 to 19K499

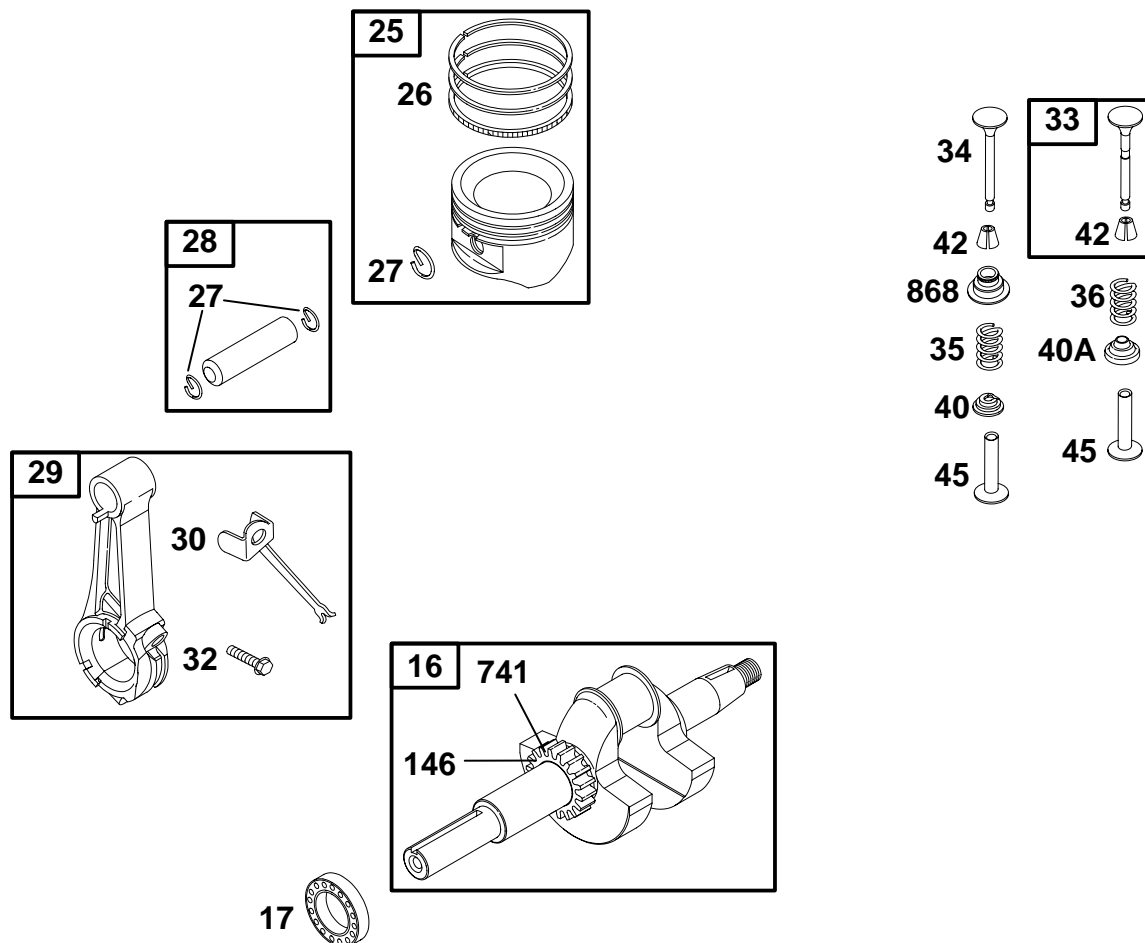


★ **REQUIRES SPECIAL TOOLS TO INSTALL.  
SEE REPAIR INSTRUCTION MANUAL.**

REF. NO.	PART NO.	DESCRIPTION	REF. NO.	PART NO.	DESCRIPTION	REF. NO.	PART NO.	DESCRIPTION
1	495656	Cylinder Assembly	14	94926	Stud (Cylinder Head)	635	66538	Boot-Sparkplug
2	495657	Kit-Bushing/Seal (Magneto Side)	15	94239	Plug-Oil Drain	718	230192	Pin-Locating
3	★391086	Seal-Oil (Magneto Side)	<b>Note</b>			729	691336	Clip-Wire
5	693600	Head-Cylinder		690289	Plug-Oil Drain (Magnetic)	869	211661	Seat-Valve (Intake)
7	Ø★272163	Gasket-Cylinder Head	306	496797	Shield-Cylinder	870	262924	Seat-Valve (Exhaust)
8	498038	Breather Assembly	307	94930	Screw (Cylinder Shield)	871	261961	Bushing-Valve Guide (Exhaust)
9	Ø★27803	Gasket-Breather	308	691201	Cover-Cylinder Head	<b>Note</b>		
10	691666	Screw (Breather Assembly)	337	802592	Sparkplug (Resistor Type)		231218	Bushing-Valve Guide (Intake)
11	280819	Tube-Breather	<b>Note</b>			978	★273326	Gasket-Oil Gard®
13	94565	Screw (Cylinder Head)		492167	Sparkplug	979	691382	Cover-Oil Gard®
13A	690904	Screw (Cylinder Head) (3" Long)	349	691105	Nut (Cylinder Head)	982	690351	Screw (OIL GARD® Cover)
			383	89838	Wrench-Sparkplug	1019	692733	Kit-Label
			552	491986	Bushing-Governor Crank			

★ Included in Engine Gasket Set-See Ref. No. 358  
• Included in Carburetor Overhaul Kit-See Ref. No. 121.

Ø Included in Valve Gasket Set-See Ref. No. 1095.  
♦ Included in Carburetor Gasket Set-See Ref. No. 977.

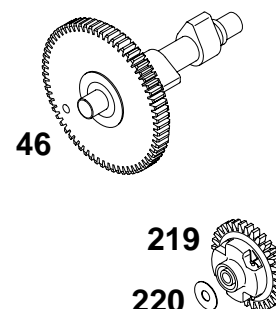
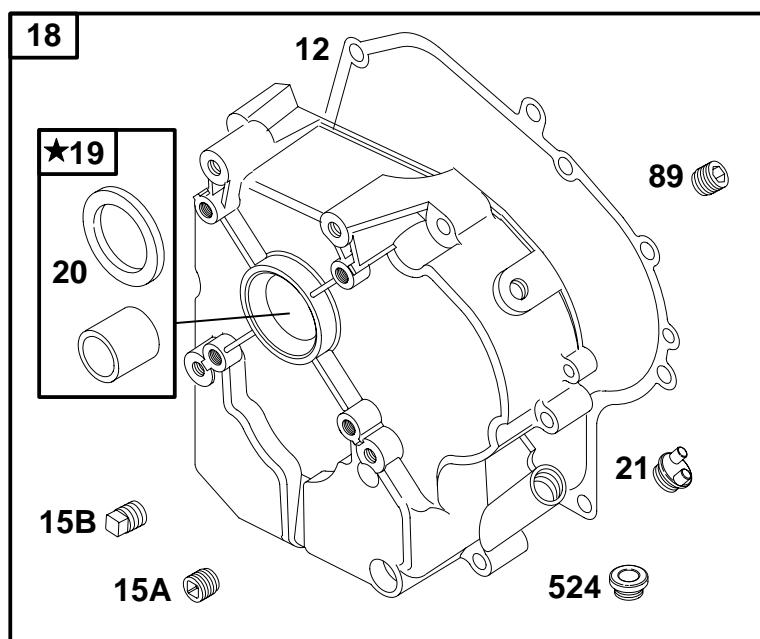


REF. NO.	PART NO.	DESCRIPTION	REF. NO.	PART NO.	DESCRIPTION	REF. NO.	PART NO.	DESCRIPTION
16	495790	Crankshaft —— <b>Note</b> —— 495655 Crankshaft Used on Type No(s). 0114.	26	690014	Ring Set (Standard) —— <b>Note</b> —— 690015 Ring Set (.010" O.S.) 690016 Ring Set (.020" O.S.) 690017 Ring Set (.030" O.S.)	30	222113	Dipper—Connecting Rod
17	691069	Bearing—Ball	27	263181	Lock—Piston Pin	32	690352	Screw (Connecting Rod)
25	499960	Piston Assembly (Standard) —— <b>Note</b> —— 499961 Piston Assembly (.010" O.S.) 499962 Piston Assembly (.020" O.S.) 499963 Piston Assembly (.030" O.S.)	28	499302	Pin—Piston (Standard) —— <b>Note</b> —— 499303 Pin— Piston (.005" O.S.)	33	390420	Valve—Exhaust
			29	390401	Rod—Connecting (Standard) —— <b>Note</b> —— 390773 Rod— Connecting (.020" Undersize)	34	261055	Valve—Intake
						35	65906	Spring—Valve (Intake)
						36	26828	Spring—Valve (Exhaust)
						40	221596	Retainer—Valve (Intake)
						40A	292260	Retainer—Valve (Exhaust)
						42	494553	Keeper—Valve
						45	260933	Tappet—Valve
						146	94388	Key—Timing
						741	691288	Gear—Timing
						868	497656	Seal—Valve

★ Included in Engine Gasket Set—See Ref. No. 358  
 ● Included in Carburetor Overhaul Kit—See Ref. No. 121.

◊ Included in Valve Gasket Set—See Ref. No. 1095.  
 ♦ Included in Carburetor Gasket Set—See Ref. No. 977.

# 19K400 to 19K499



★ **REQUIRES SPECIAL TOOLS TO INSTALL. SEE REPAIR INSTRUCTION MANUAL.**

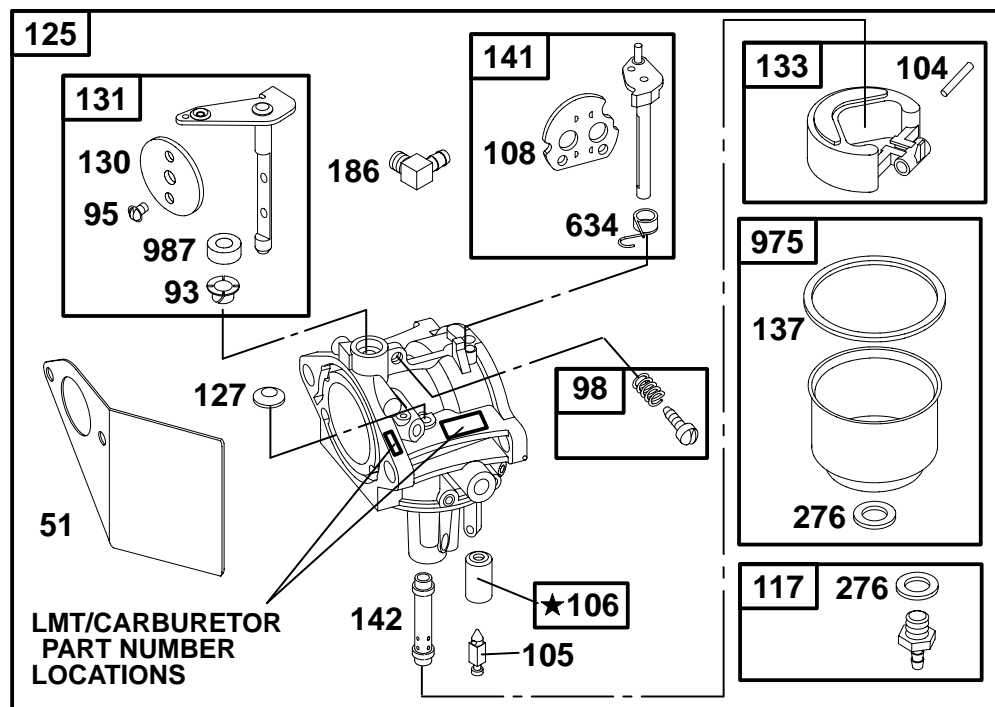
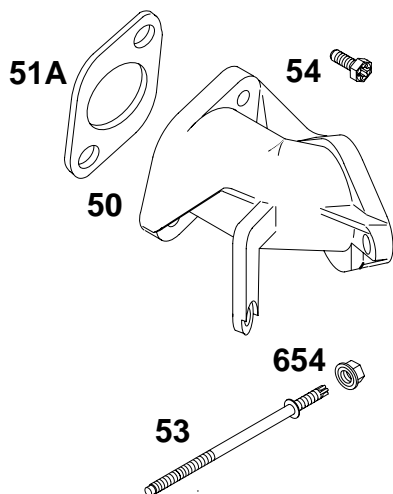


REF. NO.	PART NO.	DESCRIPTION	REF. NO.	PART NO.	DESCRIPTION	REF. NO.	PART NO.	DESCRIPTION
12	★271701	Gasket—Crankcase (.015" Thick, Standard) <b>Note</b> ★27876 Gasket—Crankcase (.005" Thick) ★27877 Gasket—Crankcase (.009" Thick)	18	496980	Cover—Crankcase <b>Note</b> 496981 Cover—Crankcase Used on Type No(s). 0114.	46	214786	Camshaft
15A	94880	Plug—Oil Drain	19	295964	Kit—Bushing/Seal (PTO Side)	89	690343	Plug—Oil
15B	690283	Plug—Oil Drain	20	★391086	Seal—Oil (PTO Side)	170	94931	Stud (Crankcase Cover) (Used in Position 1 Only)
			21	281658	Cap—Oil Fill	219	496786	Gear—Governor
			22	93585	Screw (Crankcase Cover/Sump)	220	221551	Washer (Governor Gear)
						524	281370	Seal—Dipstick Tube Used on Type No(s). 0114.

★ Included in Engine Gasket Set—See Ref. No. 358  
● Included in Carburetor Overhaul Kit—See Ref. No. 121.

Ø Included in Valve Gasket Set—See Ref. No. 1095.  
◆ Included in Carburetor Gasket Set—See Ref. No. 977.

★ **REQUIRES SPECIAL TOOLS TO INSTALL. SEE REPAIR INSTRUCTION MANUAL.**



REF. NO.	PART NO.	DESCRIPTION	REF. NO.	PART NO.	DESCRIPTION	REF. NO.	PART NO.	DESCRIPTION
50	691157	Manifold-Intake	104	●690525	Pin-Float Hinge	141	693601	Kit-Choke Shaft
51	●272708	Gasket-Intake	105	●231935	Valve-Float Needle	142	●693613	Nozzle-Carburetor
51A	○★272707	Gasket-Intake	106	●231856	Seat-Inlet	186	493496	Connector-Hose
53	94778	Stud	108	692344	Valve-Choke	276	●281164	Washer-Sealing
		(Carburetor)	117	693612	Jet-Main	634	●690802	Spring/Seal Assembly
54	93208	Screw	125	693615	Carburetor			(Choke Shaft)
		(Intake Manifold)	127	●694524	Plug-Welch	654	94010	Nut
93	●690602	Bushing-Throttle Shaft	130	690468	Valve-Throttle			(Carburetor)
95	●94098	Screw	131	693602	Kit-Throttle Shaft	975	495933	Bowl-Float
		(Throttle Valve)	133	494381	Float-Carburetor	987	●691326	Seal-Throttle Shaft
98	495800	Kit-Idle Speed	137	●281165	Gasket-Float Bowl			

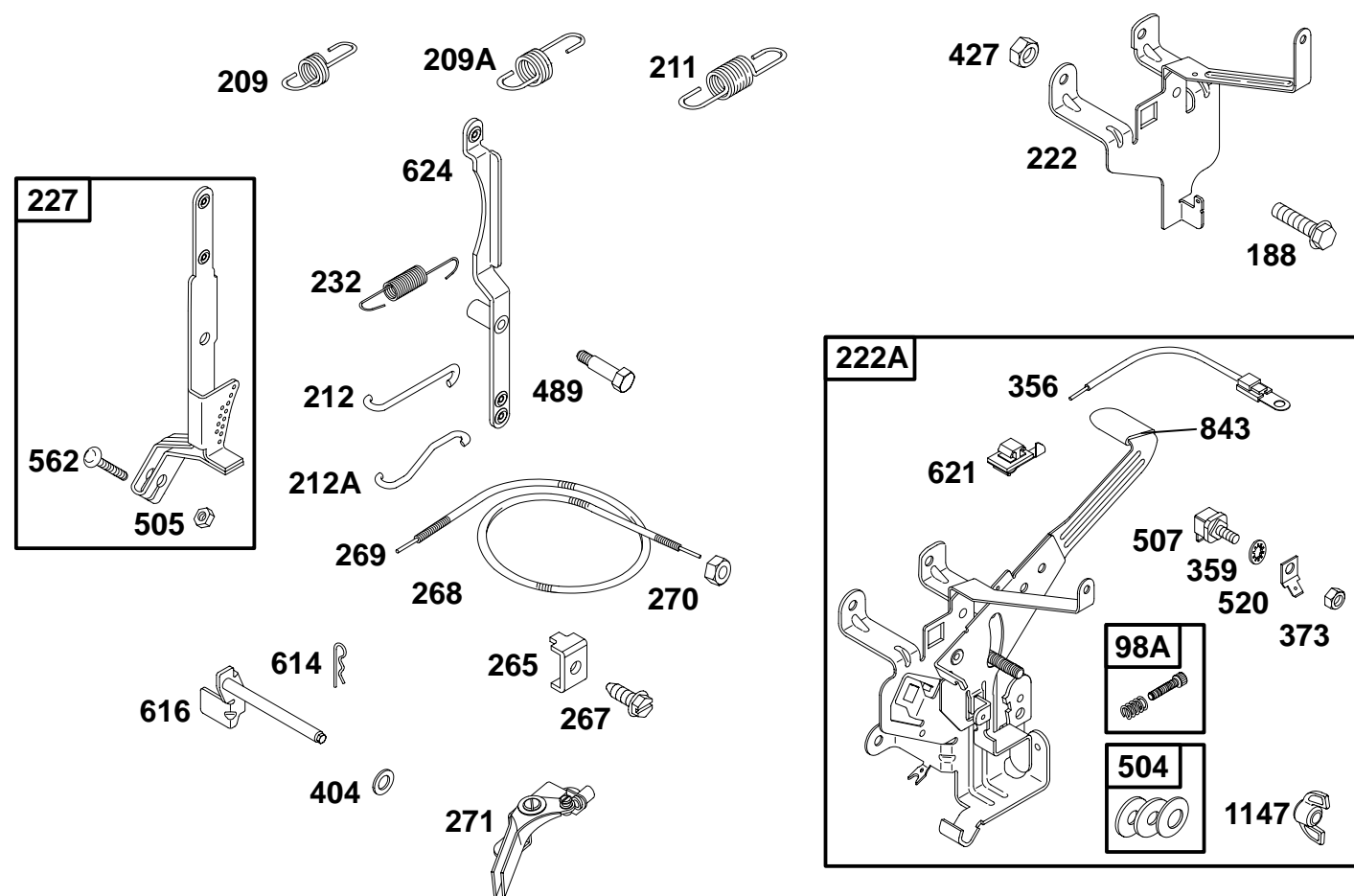
★ Included in Engine Gasket Set-See Ref. No. 358

● Included in Carburetor Overhaul Kit-See Ref. No. 121.

○ Included in Valve Gasket Set-See Ref. No. 1095.

◆ Included in Carburetor Gasket Set-See Ref. No. 977.

# 19K400 to 19K499

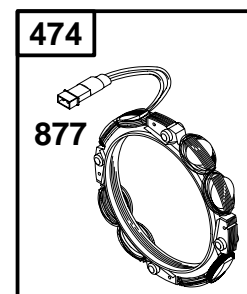
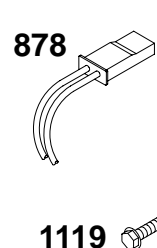
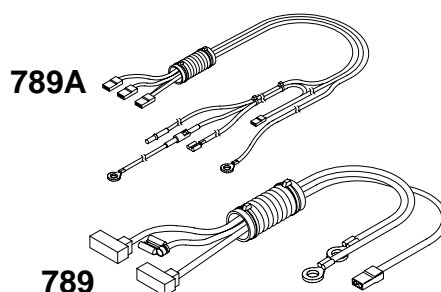
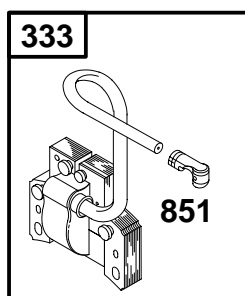
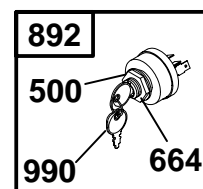
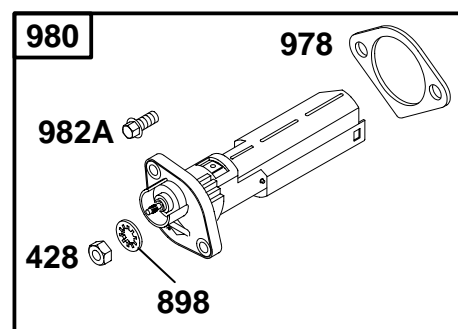
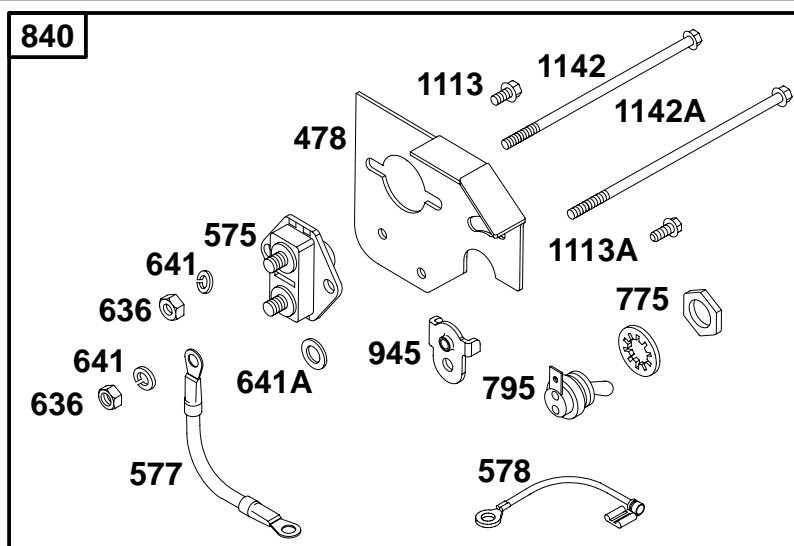


REF. NO.	PART NO.	DESCRIPTION	REF. NO.	PART NO.	DESCRIPTION	REF. NO.	PART NO.	DESCRIPTION
98A	493280	Kit-Idle Speed	232	263020	Spring-Governor Link	505	691251	Nut (Governor Control Lever)
188	94929	Screw (Control Bracket)	265	221535	Clamp-Casing	507	398525	Insulator
209	692136	Spring-Governor	267	94906	Screw (Casing Clamp)	520	691084	Terminal-Ground
209A	691309	Spring-Governor Used on Type No(s). 0114.	268	65616	Casing-Control Wire	562	691119	Bolt (Governor Control Lever)
211	691307	Spring-Governed Idle Used on Type No(s). 0114.	269	26633	Wire-Control	614	93306	Pin-Cotter
212	263049	Link-Throttle (Linkage Lever To Throttle Shaft)	270	63426	Nut (Control Wire Casing)	616	691405	Crank-Governor
212A	263051	Link-Throttle (Governor Control Lever To Linkage Lever)	271	290568	Lever-Control	621	396847	Switch-Stop
222	693606	Bracket-Control	356	691408	Wire-Stop	624	691415	Lever-Linkage
222A	691478	Bracket-Control	359	691077	Washer (Ground Terminal)	843	691322	Sleeve-Lever
227	692143	Lever-Governor Control (Short Lever With Governor Idle Eyelet)	373	90576	Nut (Ground Terminal)	1147	90576	Nut (Friction, Control Bracket)
			427	690355	Nut (Control Bracket)			
			621	396847	Switch-Stop			
			404	94927	Washer (Governor Crank)			
			489	231520	Screw (Linkage Lever)			
			504	495659	Washer Set-Friction			

★ Included in Engine Gasket Set-See Ref. No. 358  
 • Included in Carburetor Overhaul Kit-See Ref. No. 121.

Ø Included in Valve Gasket Set-See Ref. No. 1095.  
 ♦ Included in Carburetor Gasket Set-See Ref. No. 977.

# 19K400 to 19K499

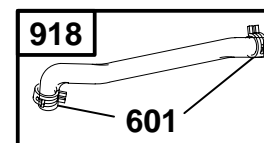
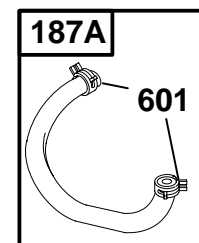
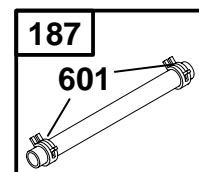
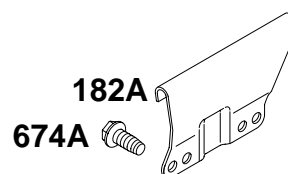
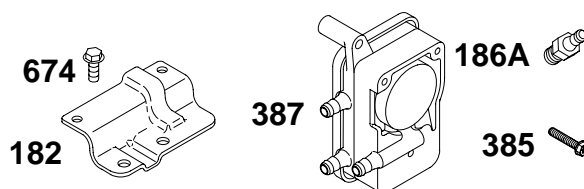
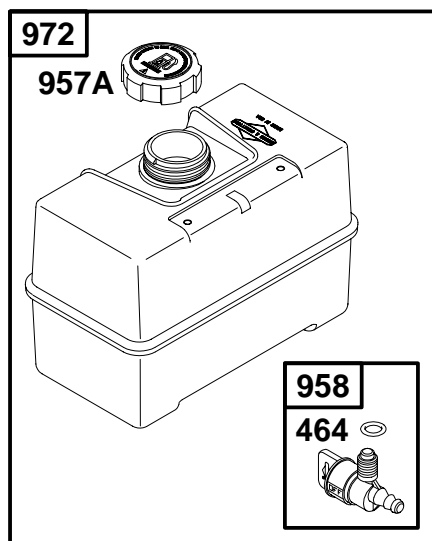
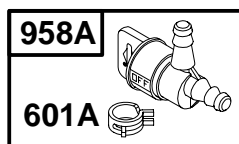


REF. NO.	PART NO.	DESCRIPTION	REF. NO.	PART NO.	DESCRIPTION	REF. NO.	PART NO.	DESCRIPTION
333	398811	Armature-Magneto	641A	690282	Washer (Control Bracket)	945	692132	Bracket-Starter Motor
334	94731	Screw (Magneto Armature)	664	691087	Nut (Key Switch)	978	★273326	Gasket-Oil Gard®
428	90576	Nut (OIL GARD® Kit)	775	690315	Nut (Toggle Switch)	980	496605	Kit-Oil Gard®
474	393474	Alternator (Dual Circuit, 2-4 Amp.)	789	693397	Harness-Wiring	982A	690350	Screw (OIL GARD® Kit)
478	395410	Panel	789A	691402	Harness-Wiring	990	392832	Key Set
500	691086	Washer (Key Switch)	795	496590	Switch-Toggle	1113	93415	Screw (Panel)
575	299139	Switch-Starting	840	395408	Kit-Panel	1113A	94929	Screw (Panel)
577	690630	Cable-Starter	851	493880	Terminal-Sparkplug	1119	93621	Screw (Alternator)
578	690647	Wire Assembly	877	393456	Wire/Connector-Alternator (Dual Lead)	1142	690323	Bolt (Starter Motor)
636	92278	Nut (Starting Switch)	878	393362	Harness-Alternator	1142A	692329	Bolt (Starter Motor)
641	691075	Washer (Starting Switch)	892	493625	Switch-Key			
			898	691077	Washer (OIL GARD® Kit)			

★ Included in Engine Gasket Set-See Ref. No. 358  
 • Included in Carburetor Overhaul Kit-See Ref. No. 121.

Ø Included in Valve Gasket Set-See Ref. No. 1095.  
 ♦ Included in Carburetor Gasket Set-See Ref. No. 977.

# 19K400 to 19K499

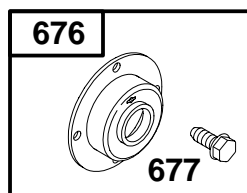
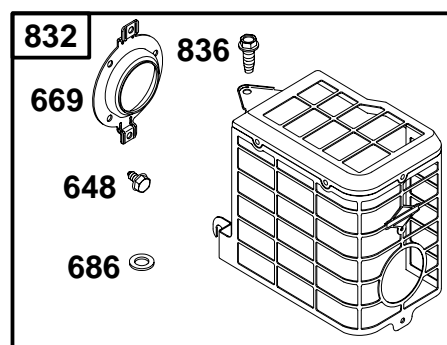
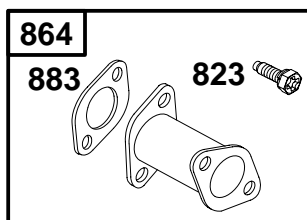
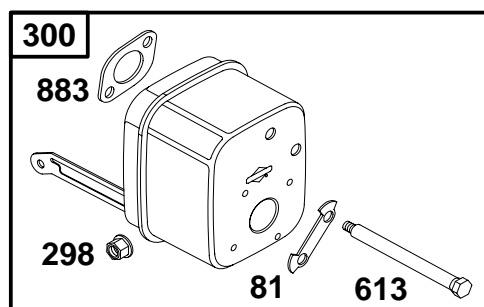
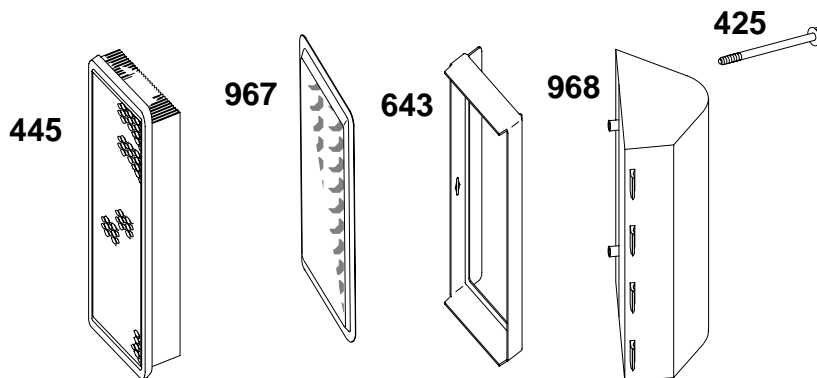
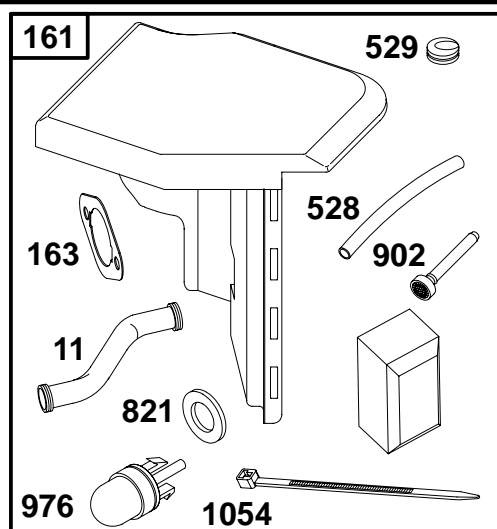


REF. NO.	PART NO.	DESCRIPTION	REF. NO.	PART NO.	DESCRIPTION	REF. NO.	PART NO.	DESCRIPTION
<b>182</b>	<b>695451</b>	Bracket–Fuel Tank (Upper)	<b>240</b>	<b>298090</b>	Filter–Fuel	<b>918</b>	<b>497457</b>	Hose–Vacuum (Cut to Required Length)
<b>182A</b>	<b>694592</b>	Bracket–Fuel Tank (Lower)	<b>385</b>	<b>94789</b>	Screw (Fuel Pump)	<b>957</b>	<b>692662</b>	Cap–Fuel Tank (Plastic)
<b>186A</b>	<b>230318</b>	Connector–Hose	<b>387</b>	<b>496257</b>	Pump–Fuel	<b>957A</b>	<b>692665</b>	Cap–Fuel Tank (Plastic)
<b>187</b>	<b>499167</b>	Line–Fuel (Cut to Required Length)	<b>601</b>	<b>95162</b>	Clamp–Hose	<b>958</b>	<b>399517</b>	Valve–Fuel Shut Off
<b>187A</b>	<b>497029</b>	Line–Fuel (Molded)	<b>601A</b>	<b>691038</b>	Clamp–Hose	<b>958A</b>	<b>494769</b>	Valve–Fuel Shut Off
<b>190</b>	<b>94895</b>	Screw (Fuel Tank)	<b>464</b>	<b>280203</b>	O–Ring Seal (Fuel Shut Off Valve)	<b>972</b>	<b>695809</b>	Tank–Fuel (Plastic)
			<b>674</b>	<b>690708</b>	Screw (Fuel Tank Bracket)			
			<b>674A</b>	<b>94627</b>	Screw (Fuel Tank Bracket)			

★ Included in Engine Gasket Set–See Ref. No. 358  
 • Included in Carburetor Overhaul Kit–See Ref. No. 121.

Ø Included in Valve Gasket Set–See Ref. No. 1095.  
 ♦ Included in Carburetor Gasket Set–See Ref. No. 977.



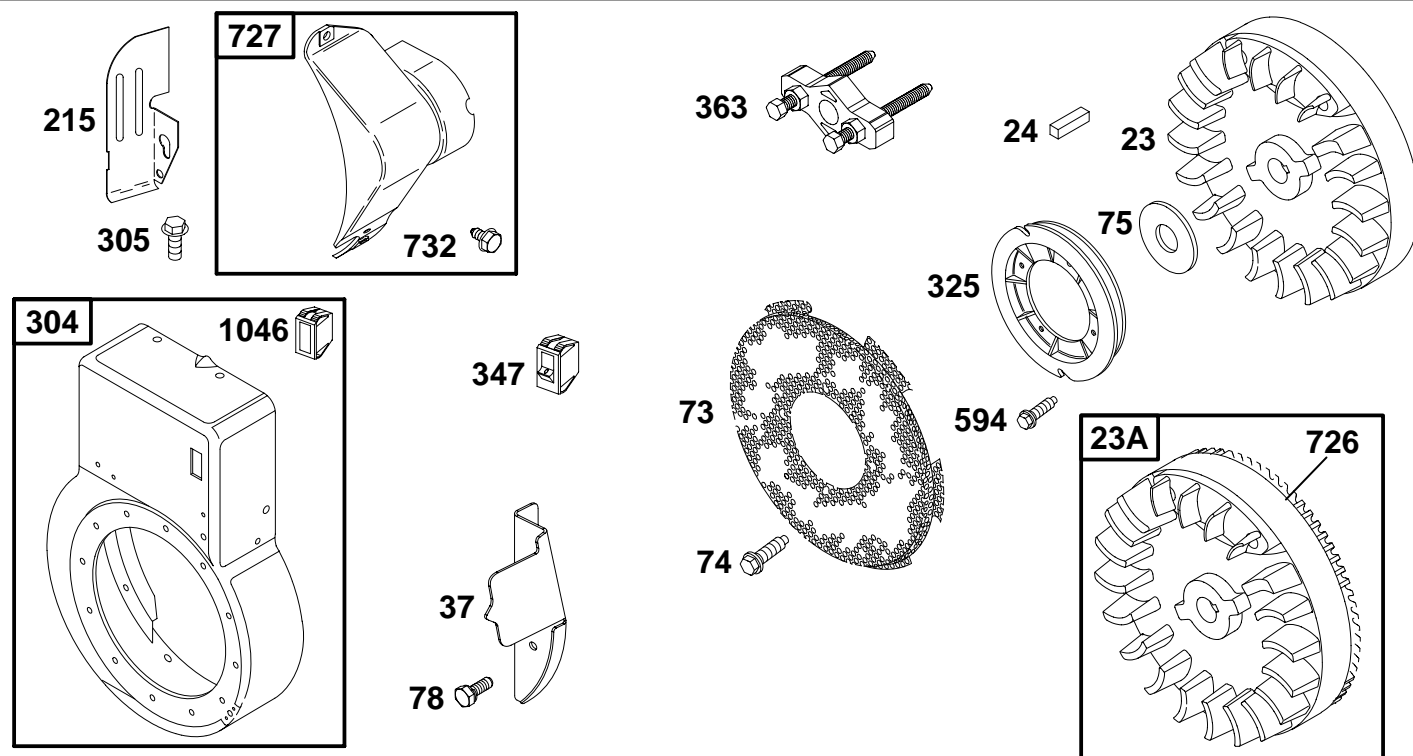


REF. NO.	PART NO.	DESCRIPTION	REF. NO.	PART NO.	DESCRIPTION	REF. NO.	PART NO.	DESCRIPTION
11	280819	Tube-Breather	601	93053	Clamp-Hose	821	692661	Washer (Carburetor Primer)
81	222263	Lock-Muffler Screw	613	94054	Screw (Muffler)	823	94706	Screw (Muffler Adapter)
161	693603	Base-Air Cleaner (Metal)	643	281358	Retainer-Air Cleaner	832	691447	Guard-Muffler
163	★Ø692277	Gasket-Air Cleaner	648	94896	Screw (Muffler Guard Bracket)	836	94786	Screw (Muffler Guard)
298	691105	Locknut-Muffler/Elbow	669	691228	Bracket-Muffler Guard	864	497140	Adapter-Muffler
300	497141	Muffler	676	395700	Deflector-Muffler (Direct Out)	883	Ø★272309	Gasket-Exhaust
425	94777	Screw (Air Cleaner Cover)	677	94896	Screw (Muffler Deflector)	902	692741	Filter-Primer
445	496077	Filter-Air Cleaner Cartridge	686	691113	Washer (Muffler Guard Bracket)	958	494769	Valve-Fuel Shut Off
528	692792	Hose-Primer (Cut to Required Length)				967	492889	Filter-Pre Cleaner
529	694087	Grommet				968	281357	Cover-Air Cleaner
						976	692666	Primer-Carburetor
						1054	280275	Tie-Cable

★ Included in Engine Gasket Set-See Ref. No. 358  
 ● Included in Carburetor Overhaul Kit-See Ref. No. 121.

Ø Included in Valve Gasket Set-See Ref. No. 1095.  
 ♦ Included in Carburetor Gasket Set-See Ref. No. 977.

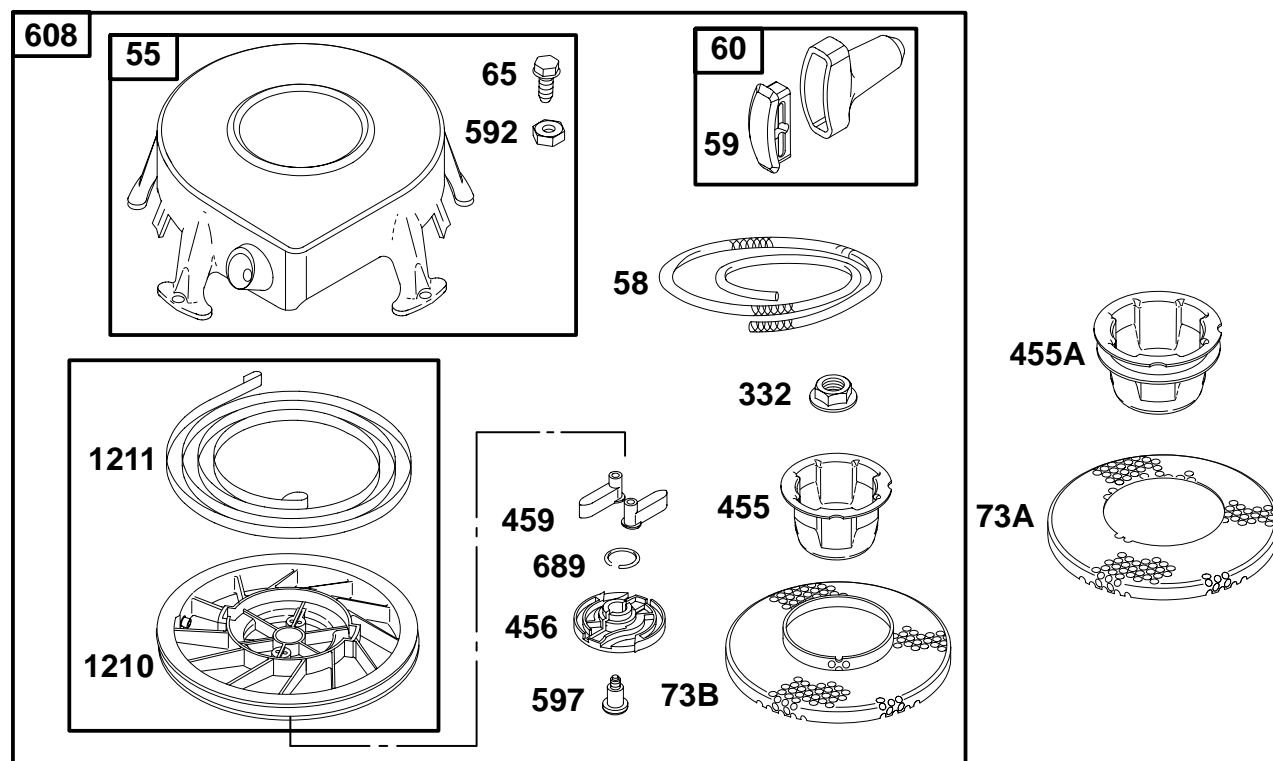
# 19K400 to 19K499



REF. NO.	PART NO.	DESCRIPTION	REF. NO.	PART NO.	DESCRIPTION	REF. NO.	PART NO.	DESCRIPTION
23	690615	Flywheel (Rewind Start Only)	78	690364	Screw (Flywheel Guard)	325	280457	Pulley-Rope Starter
23A	691354	Flywheel (Electric Start)	215	691170	Guide-Air	347	495098	Switch-Rocker
24	222698	Key-Flywheel	304	497142	Housing-Blower	363	19203	Flywheel Puller
37	690411	Guard-Flywheel	<b>Note</b>			594	94928	Screw (Rope Starter Pulley)
73	224874	Screen-Rotating	497143 Housing-Blower			726	399676	Gear-Ring
74	94928	Screw (Rotating Screen)	Used on Type No(s). 0111.			727	395405	Cover-Starter Drive
75	225136	Washer (Flywheel)	305	94786	Screw (Blower Housing)	732	691097	Screw (Starter Drive Cover)
						1046	691337	Plug-Blower Housing

★ Included in Engine Gasket Set-See Ref. No. 358  
 ● Included in Carburetor Overhaul Kit-See Ref. No. 121.

◊ Included in Valve Gasket Set-See Ref. No. 1095.  
 ♦ Included in Carburetor Gasket Set-See Ref. No. 977.

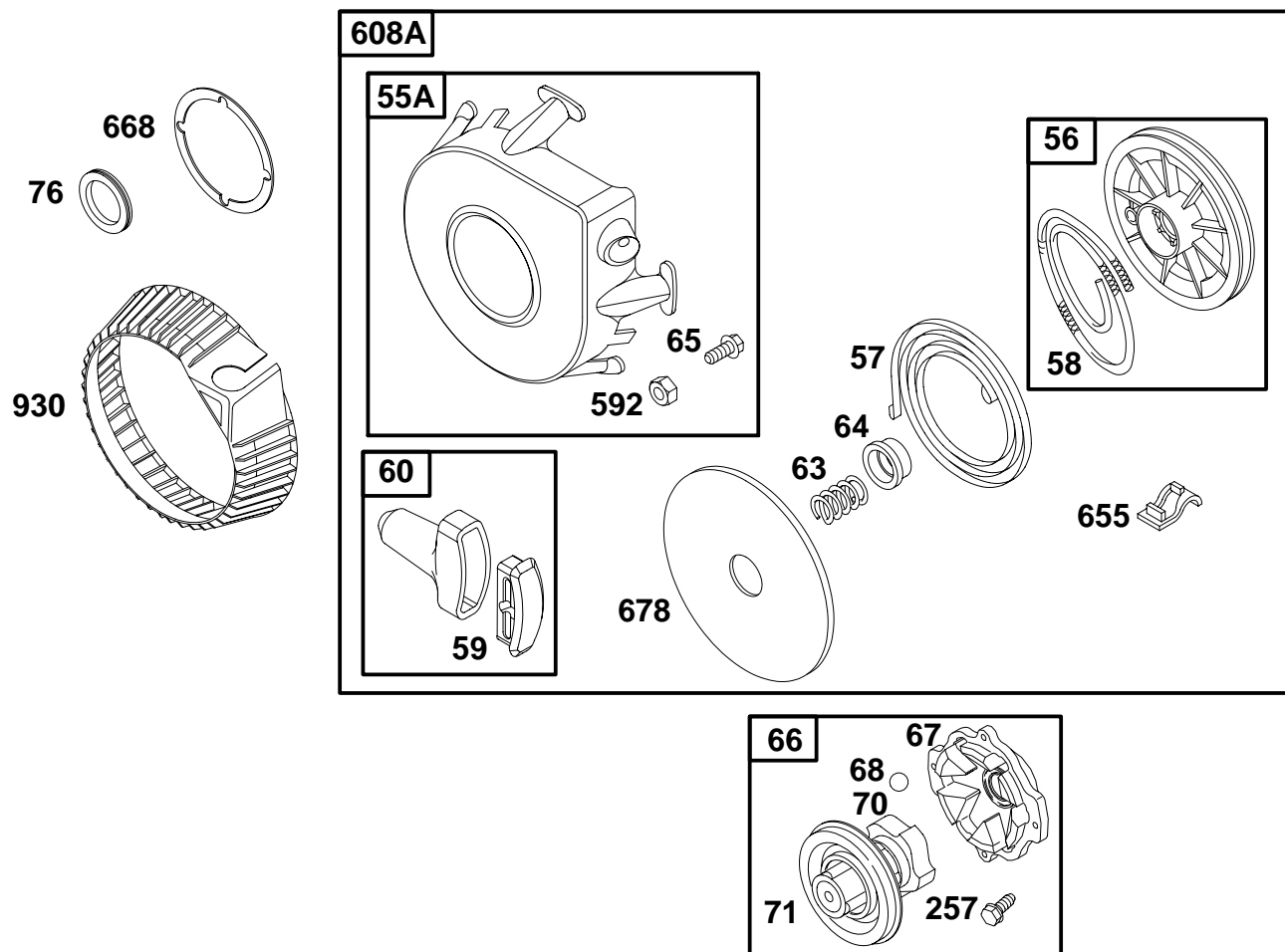


REF. NO.	PART NO.	DESCRIPTION	REF. NO.	PART NO.	DESCRIPTION	REF. NO.	PART NO.	DESCRIPTION
55	693904	Housing–Rewind Starter	332	693899	Nut (Flywheel)	689	263073	Spring–Friction
58	66884	Rope–Starter (63" Long, Cut To Required Length)	455	693902	Cup–Flywheel	1210	498144	Pulley/Spring Assembly (Pulley)
	<b>Note</b>		455A	694017	Cup–Flywheel (Used with 99" Rope)	1211	498144	Pulley/Spring Assembly (Spring)
	66894	Rope–Starter (99" Long, Cut To Required Length)	456	281503	Plate–Pawl Friction			
59	490653	Insert–Grip	459	281505	Pawl–Ratchet			
60	490652	Grip–Starter Rope	592	94908	Nut (Starter Rewind)			
65	94904	Screw (Rewind Starter)	597	94943	Screw (Pawl Friction Plate)			
73A	694020	Screen–Rotating (Used with 99" Rope)	608	693900	Starter–Rewind (63" Length Rope) (Used After Code Date 98111500).			
73B	693905	Screen–Rotating						

★ Included in Engine Gasket Set–See Ref. No. 358  
 ● Included in Carburetor Overhaul Kit–See Ref. No. 121.

◊ Included in Valve Gasket Set–See Ref. No. 1095.  
 ♦ Included in Carburetor Gasket Set–See Ref. No. 977.

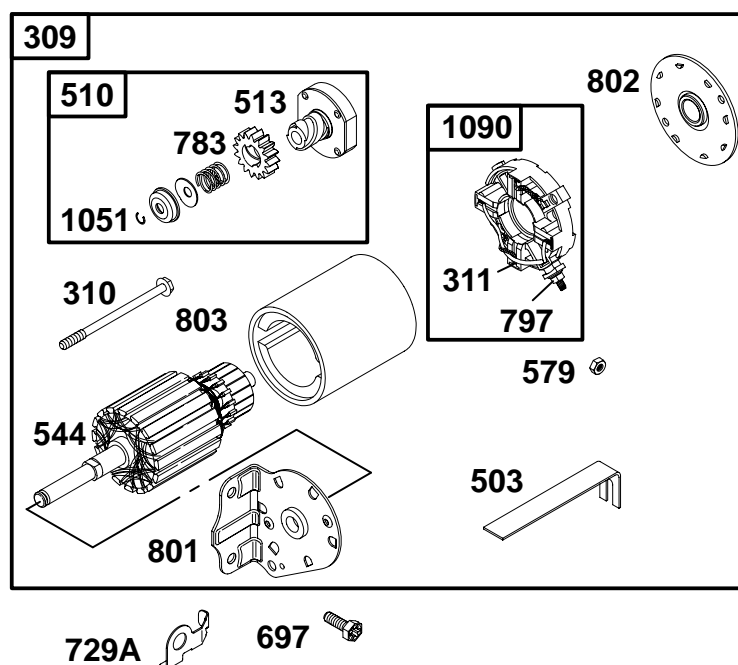
# 19K400 to 19K499



REF. NO.	PART NO.	DESCRIPTION	REF. NO.	PART NO.	DESCRIPTION	REF. NO.	PART NO.	DESCRIPTION
55A	393576	Housing-Rewind Starter	65	94904	Screw (Rewind Starter)	592	94908	Nut (Rewind Starter)
56	295871	Pulley-Starter	66	399671	Clutch-Starter	608A	390391	Starter-Rewind (Used Before Code Date 98111600).
57	490179	Spring-Rewind Starter	67	394897	Clutch-Housing	655	222598	Anchor-Rewind Spring
58	66884	Rope-Starter (63" Long, Cut To Required Length)	68	63770	Ball-Clutch	668	690500	Spacer
59	490653	Insert-Grip	70	298799	Ratchet-Clutch	678	490817	Spacer-Rewind
60	490652	Grip-Starter Rope	71	691359	Cover-Ratchet	930	280685	Guard-Rewind
63	260414	Spring-Ratchet	76	68238	Seal-Ratchet			
64	281204	Spring-Ratchet Spring	257	94680	Screw (Starter Clutch)			

★ Included in Engine Gasket Set—See Ref. No. 358  
 ● Included in Carburetor Overhaul Kit—See Ref. No. 121.

⊘ Included in Valve Gasket Set—See Ref. No. 1095.  
 ♦ Included in Carburetor Gasket Set—See Ref. No. 977.



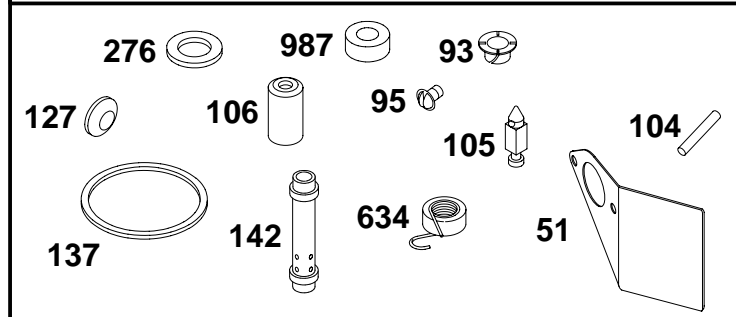
REF. NO.	PART NO.	DESCRIPTION	REF. NO.	PART NO.	DESCRIPTION	REF. NO.	PART NO.	DESCRIPTION
309	693054	Motor-Starter	544	497603	Armature-Starter	797	693167	Nut (Brush Retainer)
310	690323	Bolt (Starter Motor)	579	92278	Nut (Starter Cable)	801	394856	Cap-Drive
311	497608	Brush Set	697	690372	Screw (Drive Cap)	802	497607	Cap-End
503	691532	Strap-Starter	729	691224	Clip-Wire	803	691427	Housing-Starter
510	497606	Drive-Starter	783	693059	Gear-Pinion	1051	263080	Ring-Retaining
513	398003	Clutch-Drive				1090	497605	Retainer-Brush

★ Included in Engine Gasket Set—See Ref. No. 358  
 ● Included in Carburetor Overhaul Kit—See Ref. No. 121.

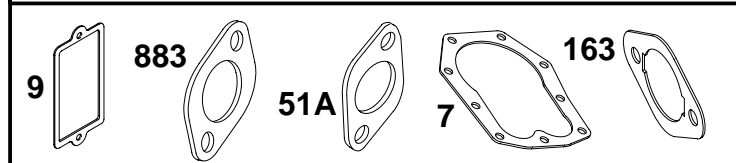
Ø Included in Valve Gasket Set—See Ref. No. 1095.  
 ♦ Included in Carburetor Gasket Set—See Ref. No. 977.

# 19K400 to 19K499

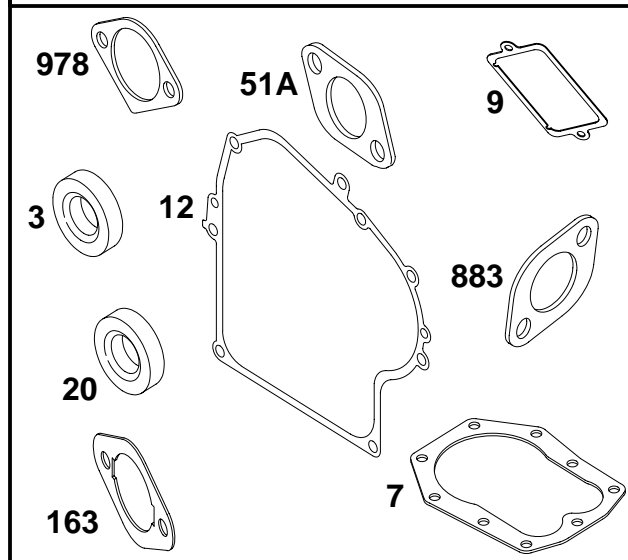
## 121 CARBURETOR OVERHAUL KIT



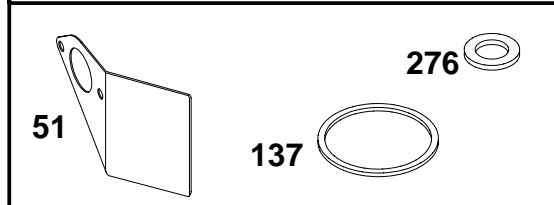
## 1095 VALVE GASKET SET



## 358 ENGINE GASKET SET



## 977 CARBURETOR GASKET SET



REF. NO.	PART NO.	DESCRIPTION	REF. NO.	PART NO.	DESCRIPTION	REF. NO.	PART NO.	DESCRIPTION
3	★391086	Seal—Oil (Magneto Side)	20	★391086	Seal—Oil (PTO Side)	137	◆281165	Gasket—Float Bowl
7	Ø★272163	Gasket—Cylinder Head	51	◆272708	Gasket—Intake	142	◆693613	Nozzle—Carburetor
9	Ø★27803	Gasket—Breather	51A	Ø★272707	Gasket—Intake	163	Ø★692277	Gasket—Air Cleaner
12	★271701	Gasket—Crankcase (.015 Thick, Standard)	93	◆690602	Bushing—Throttle Shaft	276	◆281164	Washer—Sealing
<b>Note</b>			95	◆94098	Screw (Throttle Valve)	358	497070	Gasket Set—Engine
	★27876	Gasket—Crankcase (.005 Thick)	104	◆690525	Pin—Float Hinge	634	◆690802	Spring/Seal Assembly (Choke Shaft)
	★27877	Gasket—Crankcase (.009 Thick)	105	◆231935	Valve—Float Needle	883	Ø★272309	Gasket—Exhaust
			106	◆231856	Seat—Inlet	977	497069	Gasket Set—Carburetor
			121	497578	Kit—Carburetor Overhaul	978	★273326	Gasket—Oil Gard®
			127	◆694524	Plug—Welch	987	◆691326	Seal—Throttle Shaft
						1095	498534	Gasket Set—Valve

★ Included in Engine Gasket Set—See Ref. No. 358  
◆ Included in Carburetor Overhaul Kit—See Ref. No. 121.

Ø Included in Valve Gasket Set—See Ref. No. 1095.  
◆ Included in Carburetor Gasket Set—See Ref. No. 977.