

12J700 to 12J799

Illustrated Parts List

Model Series

12J700 to 12J799

TYPE NUMBERS

0615, 0616, 0639,
0657,
1715, 1716, 1739,
1748, 1749, 1750,
1753, 1754, 1757.

TO FIND**THE CORRECT NUMBER OF THE PART YOU NEED:
FOLLOW THE INSTRUCTIONS BELOW**

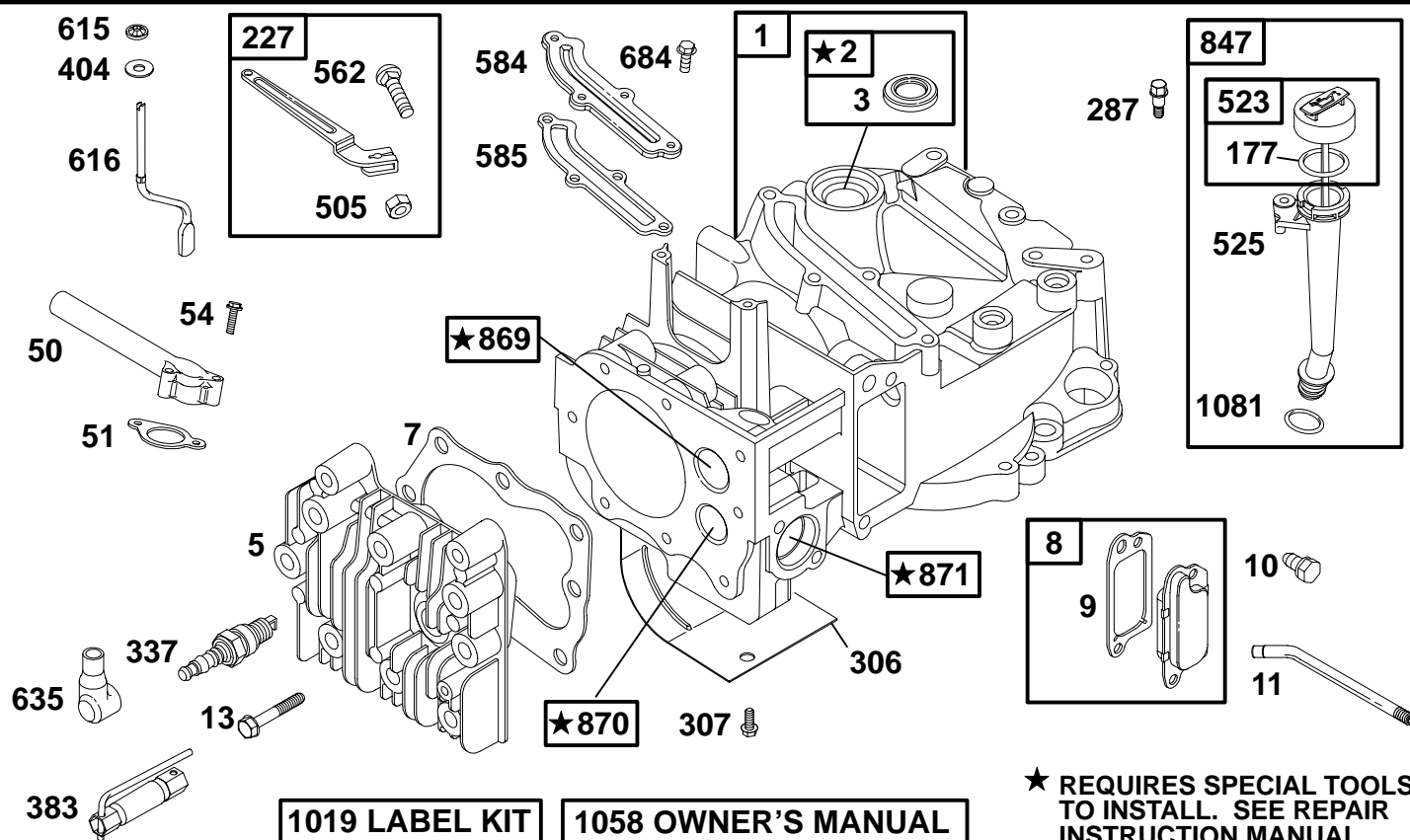
- A. Refer to Engine Model, Type and Code Number that is stamped on the blower housing of engine. Engine type numbers such as 0123 01 are listed only as 0123 in most instances. The two digits (01 or 02, etc.) to the right of the space may be required for more accurate parts identification in some instances. Select the Illustrated Parts List covering the correct Model Series and Type Number.
- B. Refer to the Illustrations and compare the original part with Illustration. The number next to the illustration is the Reference Number. Assemblies include all parts shown in frames. All parts shown in assembly frames having individual reference numbers can be purchased separately.
- C. After the Reference Number has been identified, refer to the Numerical text, where Reference and Primary Part Number are listed. **THE PRIMARY PART IS USED ON ALL TYPE NUMBERS EXCEPT THOSE TYPE NUMBERS UNDER "NOTE."**
- D. If a "Note" appears below the Primary Part Number, it means that this part differs from the Primary Part for certain types. If your Type number is listed under "Note," order the part referred to at the "Note."
- E. If your Engine Type Number does not appear after any part number listed under "Note," use the Primary Part Number.
- F. For Engine Type Numbers not covered by this book, check other Parts Lists having the same engine model or contact your source of supply.

PRINTED IN U.S.A.



COPYRIGHT by BRIGGS & STRATTON CORPORATION
All rights reserved. No part of this material may be reproduced or transmitted, in any form or by any means, electronic or mechanical, including photocopying, recording or by any information storage and retrieval system, without permission in writing from Briggs & Stratton Corporation.

12J700 to 12J799

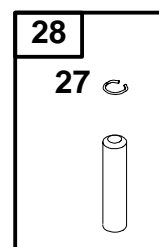
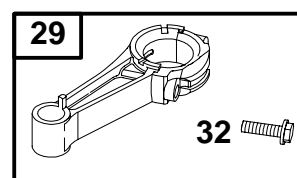
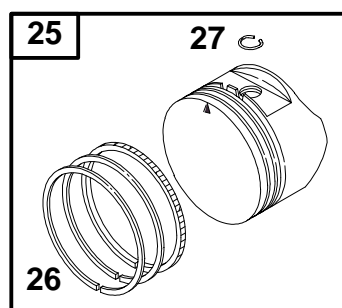


REF. NO.	PART NO.	DESCRIPTION	REF. NO.	PART NO.	DESCRIPTION	REF. NO.	PART NO.	DESCRIPTION
1	494062	Cylinder Assembly	307	690345	Screw (Cylinder Shield)	869	691155	Seat-Valve (Intake)
2	399269	Bushing/Seal Kit	337	802592	Spark Plug	870	690380	Seat-Valve (Exhaust)
3	★299819	Oil Seal (Magneto Side)	383	89838	Spark Plug Wrench	871	262001	Bushing-Guide (Exhaust Valve)
5	691160	Cylinder Head	404	690272	Washer (Governor Crank)	Note		
7	★Ø272916	Cylinder Head Gasket	505	231082	Nut (Governor Lever)	63709 Bushing Guide (Intake Valve)		
8	495786	Breather Assembly	523	495264	Dipstick	1019	494256	Label Kit
9	★Ø272481	Breather Gasket	525	495265	Dipstick Tube	1058	273125	Owner's Manual (Emission) (Used After Code Date 97052500).
10	94650	Screw (Breather Assy)	562	92613	Bolt (Governor Lever)	Note		
11	231933	Breather Tube	584	692342	Breather Passage Cover	273693 Owner's Manual (Emission) (Used Before Code Date 97052600).		
13	94547	Screw (Cylinder Head)	585	★272238	Breather Passage Gasket	272262 Owner's Manual (Non-Emission)		
50	497465	Intake Manifold	615	690340	Retainer-Governor Shaft	1081	★280966	O-Ring Seal (Dipstick Tube)
51	★272199	Intake Gasket	616	690306	Crank-Governor			
54	94526	Screw (Intake Manifold)	635	66538	Sparkplug Boot			
177	★280393	O-Ring Seal (Dipstick)	684	690345	Screw (Breather Passage Cover)			
227	690783	Lever-Governor	847	495263	Dipstick/Tube Assembly			
287	94511	Screw (Dipstick Tube)						
306	690450	Shield-Cylinder						

★ Included in Engine Gasket Set—See Ref. No. 358.
● Included in Carburetor Overhaul Kit—See Ref. No. 121.

◆ Included in Carburetor Gasket Set—See Ref. No. 977.
Ø Included in Valve Overhaul Gasket Set—See Ref. No. 1095.

12J700 to 12J799

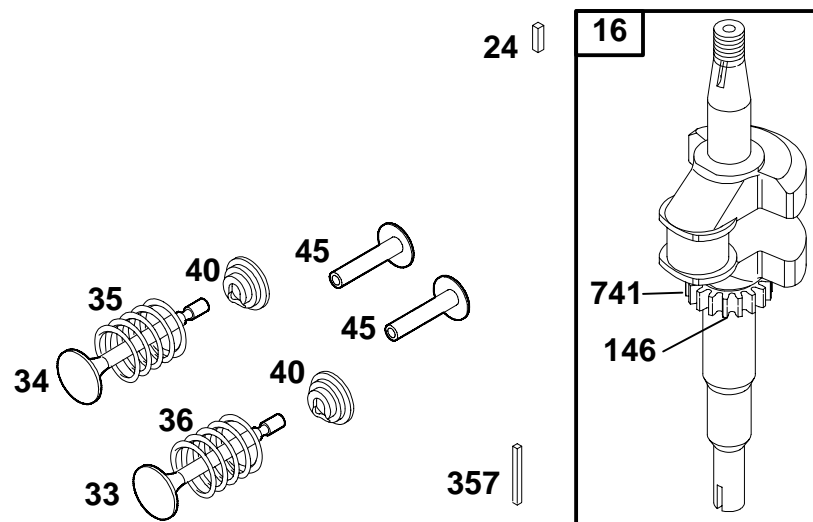


REF. NO.	PART NO.	DESCRIPTION	REF. NO.	PART NO.	DESCRIPTION	REF. NO.	PART NO.	DESCRIPTION
25	499433	Piston Assembly (Standard) (Used After Code Date 97011200). Note 494058 Piston Assy. (Standard) (Used Before Code Date 97011300).	26	499425	Ring Set (Standard) (Used After Code Date 97011200). Note 493261 Ring Set (Standard) (Used Before Code Date 97011300).	27	263190	Piston Pin Lock (Used After Code Date 97011200). Note 26026 Piston Pin Lock (Used Before Code Date 97011300).
	499434	Piston Assy. (.010" O.S.) (Used After Code Date 97011200).		499426	Ring Set (.010" O.S.) (Used After Code Date 97011200).	28	499423	Piston Pin (Standard) (Used After Code Date 97011200). Note 298909 Piston Pin (Standard) (Used Before Code Date 97011300).
	494059	Piston Assy. (.010" O.S.) (Used Before Code Date 97011300).		493388	Ring Set (.010" O.S.) (Used Before Code Date 97011300).		298908	Piston Pin (.005" O.S.) (Used Before Code Date 97011300).
	499435	Piston Assy. (.020" O.S.) (Used After Code Date 97011200).		499427	Ring Set (.020" O.S.) (Used After Code Date 97011200).	29	499424	Connecting Rod (Standard) (Used After Code Date 97011200). Note 490566 Connecting Rod (Standard) (Used Before Code Date 97011300).
	494060	Piston Assy. (.020" O.S.) (Used Before Code Date 97011300).		493389	Ring Set (.020" O.S.) (Used Before Code Date 97011300).		490743	Connecting Rod (.020" Undersize) (Used Before Code Date 97011300).
	499436	Piston Assy. (.030" O.S.) (Used After Code Date 97011200).		499428	Ring Set (.030" O.S.) (Used After Code Date 97011200).	32	94699	Screw (Connecting Rod)
	494061	Piston Assy. (.030" O.S.) (Used Before Code Date 97011300).		493390	Ring Set (.030" O.S.) (Used Before Code Date 97011300).			

★ Included in Engine Gasket Set—See Ref. No. 358.
● Included in Carburetor Overhaul Kit—See Ref. No. 121.

◆ Included in Carburetor Gasket Set—See Ref. No. 977.
⊗ Included in Valve Overhaul Gasket Set—See Ref. No. 1095.

12J700 to 12J799

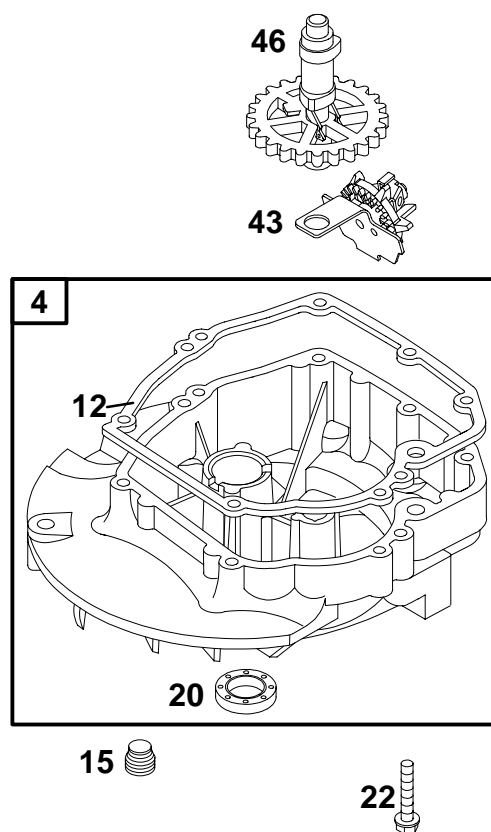


REF. NO.	PART NO.	DESCRIPTION	REF. NO.	PART NO.	DESCRIPTION	REF. NO.	PART NO.	DESCRIPTION
16	691451	Crankshaft (Used After Code Date 97011200). Note 493362 Crankshaft (Used Before Code Date 97011300). 691452 Crankshaft (Used After Code Date 97011200). Used on Type No(s). 1753, 1754. 493363 Crankshaft (Used Before Code Date 97011300). Used on Type No(s). 1753, 1754. 691455 Crankshaft Used on Type No(s). 0639, 1739.	24	222698	Flywheel Key	45	690548	Valve Tappet
			33	262651	Exhaust Valve	146	94388	Timing Key
			34	262652	Intake Valve	357	91539	Drive Pulley Key
			35	691270	Valve Spring (Intake)	741	262598	Gear-Timing
			36	691270	Valve Spring (Exhaust)			
			40	93312	Valve Retainer			

★ Included in Engine Gasket Set—See Ref. No. 358.
● Included in Carburetor Overhaul Kit—See Ref. No. 121.

◆ Included in Carburetor Gasket Set—See Ref. No.977.
⊗ Included in Valve Overhaul Gasket Set—See Ref. No. 1095.

12J700 to 12J799



REF. NO.	PART NO.	DESCRIPTION	REF. NO.	PART NO.	DESCRIPTION	REF. NO.	PART NO.	DESCRIPTION
4	493279	Engine Sump	22	691092	Screw (Engine Sump)	46	691449	Camshaft (Used After Code Date 96060300).
12	★272198	Crankcase Gasket	Note 94612 Screw (Engine Sump) (One Used in Hole Nearest Breather)			Note 492830 Camshaft (Used Before Code Date 96060300).		
15	94880	Oil Drain Plug	43	493737	Governor/Oil Slinger			
20	★399781	Oil Seal (PTO Side)						

★ Included in Engine Gasket Set—See Ref. No. 358.
 ● Included in Carburetor Overhaul Kit—See Ref. No. 121.

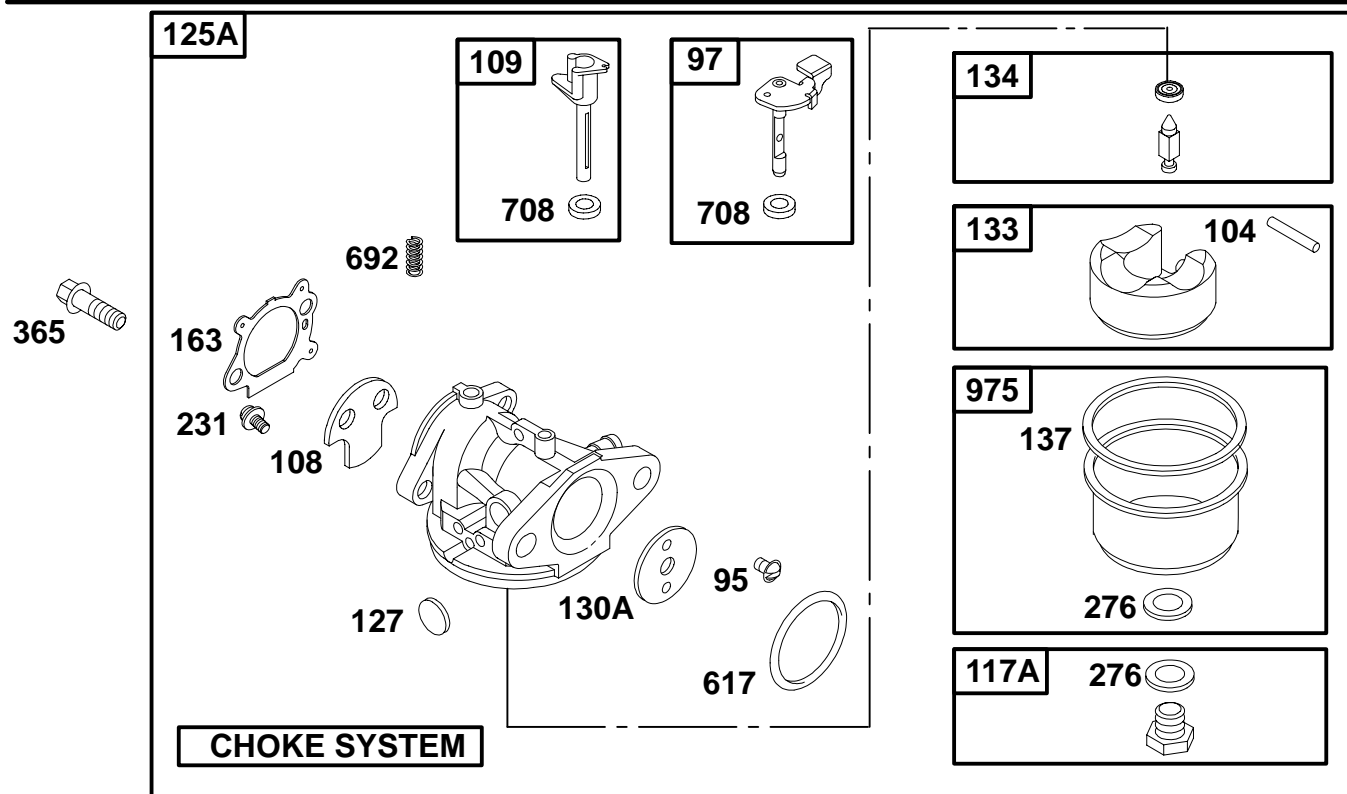
◆ Included in Carburetor Gasket Set—See Ref. No.977.
 ∅ Included in Valve Overhaul Gasket Set—See Ref. No. 1095.

1115-5

Assemblies include all parts shown in frames.

69

12J700 to 12J799



REF. NO.	PART NO.	DESCRIPTION	REF. NO.	PART NO.	DESCRIPTION	REF. NO.	PART NO.	DESCRIPTION
95	94098	Screw (Throttle Valve)	127	•	Welch Plug (Sold in Kit Only)	617	•◆270344	O–Ring Seal (Intake Manifold)
97	493267	Throttle Shaft	130A	691181	Throttle Valve	692	690572	Detent Spring
104	•691242	Float Hinge Pin	133	398187	Carburetor Float	708	•◆691321	Dust Seal
108	691182	Choke Valve	134	•398188	Needle/Seat Kit	975	493640	Float Bowl
109	498593	Choke Shaft	137	•◆	Float Bowl Gasket (Sold in Kit Only)			
117A	494870	Main Jet (Standard)	163	★•◆272653	Air Cleaner Gasket			
		————— Note —————	231	94098	Screw (Choke Valve)			
		497315 Main Jet (High Altitude)	276	•◆	Sealing Washer (Sold in Kit Only)			
125A	690000	Carburetor (Choke System) Used on Type No(s). 0639, 1739.	365	94525	Screw (Carburetor)			

★ Included in Engine Gasket Set—See Ref. No. 358.
● Included in Carburetor Overhaul Kit—See Ref. No. 121.

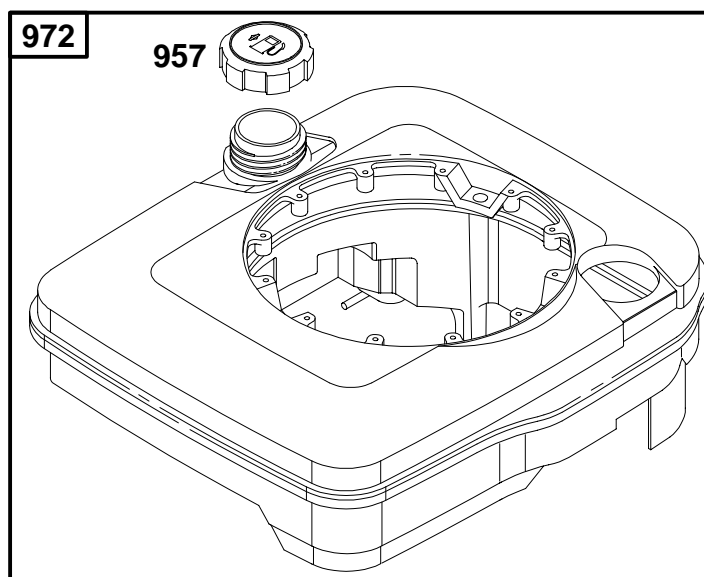
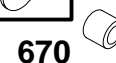
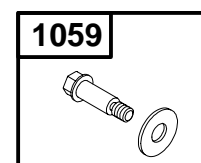
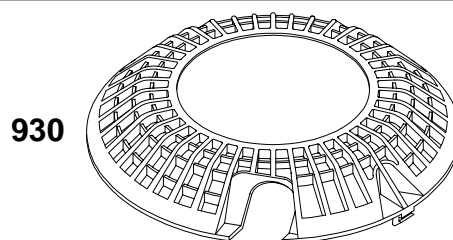
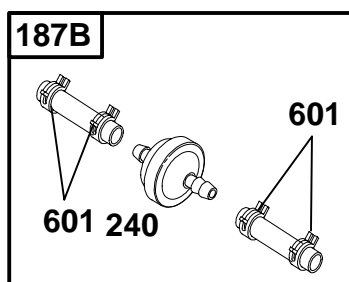
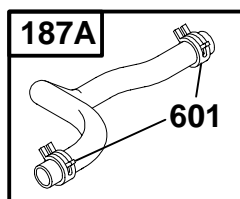
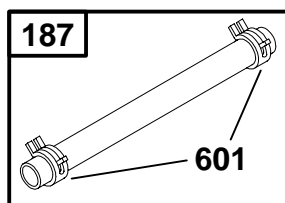
◆ Included in Carburetor Gasket Set—See Ref. No.977.
 Ø Included in Valve Overhaul Gasket Set—See Ref. No. 1095.

1115-7

Assemblies include all parts shown in frames.

69

12J700 to 12J799

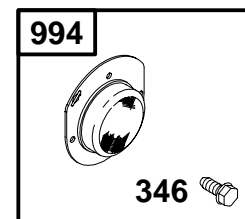
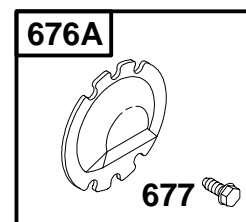
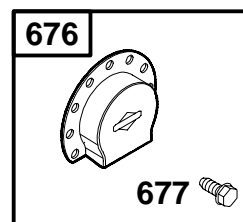
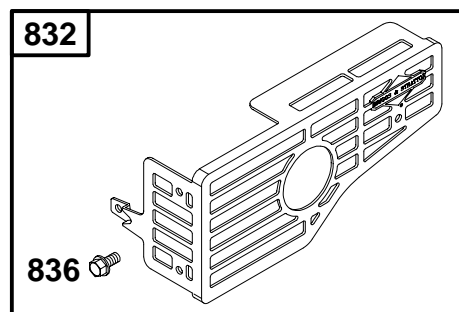
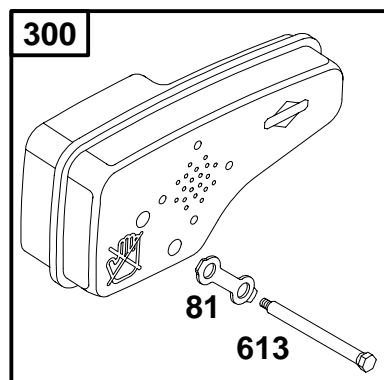
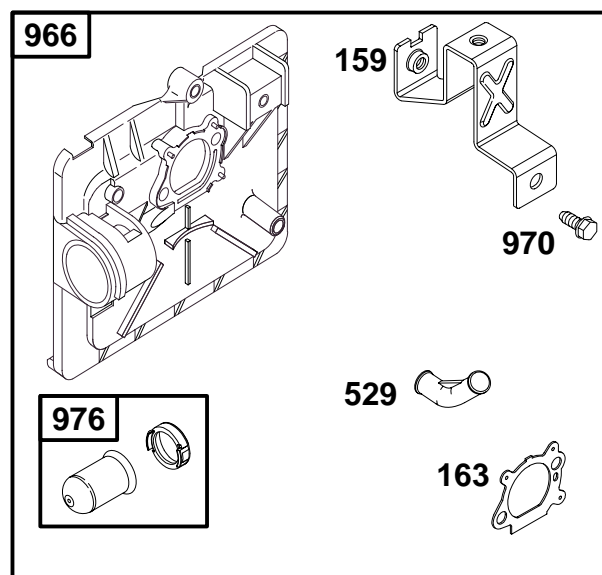
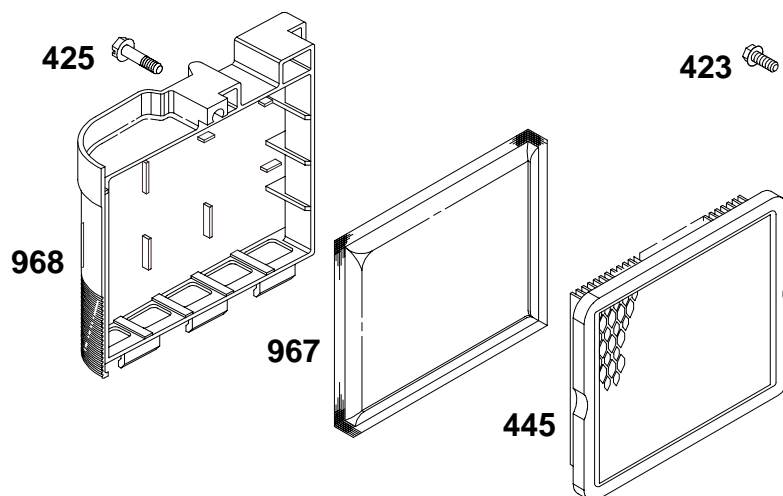


REF. NO.	PART NO.	DESCRIPTION	REF. NO.	PART NO.	DESCRIPTION	REF. NO.	PART NO.	DESCRIPTION
187	492790	Fuel Line (Cut to Required Length)	187B	498171	Fuel Line	670	280512	Spacer-Fuel Tank
187A	691371	Fuel Line (Molded)	190	94511	Screw (Fuel Tank)	930	281136	Guard-Rewind
			240	298090	Fuel Filter	957	397974	Fuel Tank Cap
			601	93053	Clamp-Hose	972	497227	Fuel Tank
						1059	398540	Screw/Washer Kit

★ Included in Engine Gasket Set—See Ref. No. 358.
● Included in Carburetor Overhaul Kit—See Ref. No. 121.

◆ Included in Carburetor Gasket Set—See Ref. No. 977.
⌀ Included in Valve Overhaul Gasket Set—See Ref. No. 1095.

12J700 to 12J799



REF. NO.	PART NO.	DESCRIPTION	REF. NO.	PART NO.	DESCRIPTION	REF. NO.	PART NO.	DESCRIPTION
81	223664	Lock-Muffler Screw	529	281299	Grommet	968	281340	Cover-Air Cleaner
159	224815	Air Cleaner Primer Bracket	613	94231	Screw (Exhaust Muffler)	970	94749	Screw (Air Cleaner Primer Bracket)
163★◆	272653	Air Cleaner Gasket	676	393760	Muffler Deflector	976	694395	Carburetor Primer (Used After Code Date 99103100).
300	497838	Muffler-Exhaust	676A	393756	Muffler Deflector	Note 496115 Carburetor Primer (Used Before Code Date 99110100).		
346	94896	Screw (Spark Arrester)	677	94896	Screw (Muffler Deflector)			
423	94873	Screw (Air Cleaner Primer Base)	832	499034	Guard-Muffler	994	398067	Arrester-Spark
425	94872	Screw (Air Cleaner Cover)	836	94874	Screw (Muffler Guard)			
445	491588	Filter-Air Cleaner Cartridge	966	496116	Air Cleaner Primer Base			
			967	493537	Filter-Pre Cleaner			

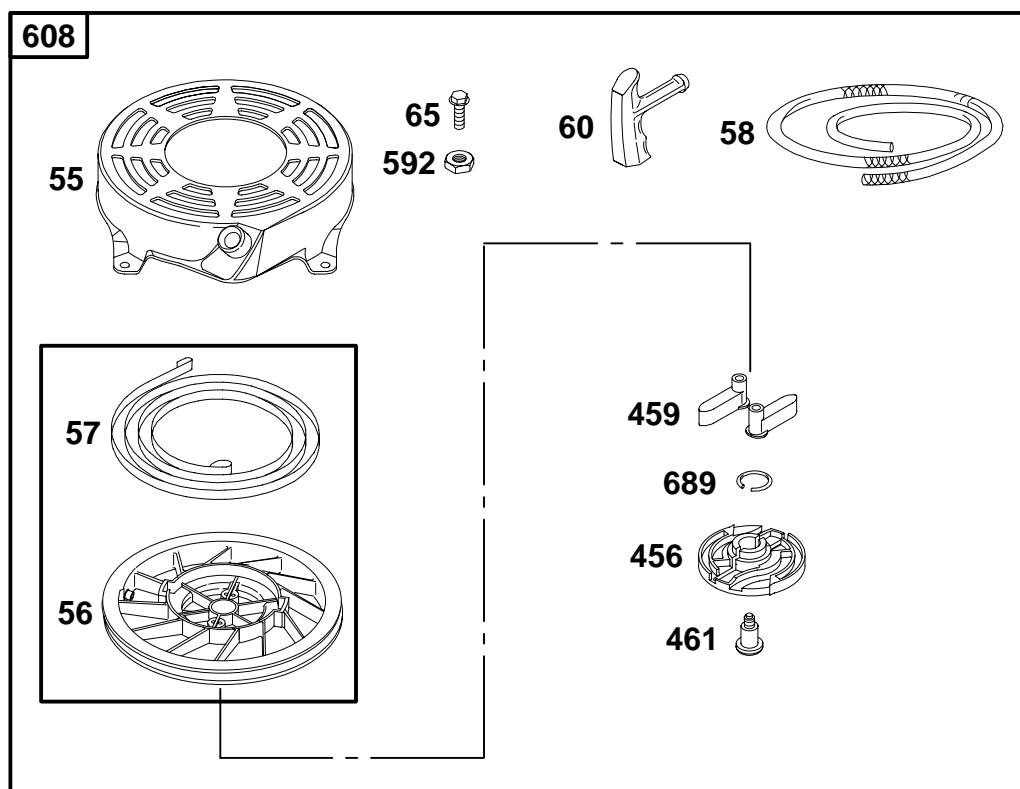
★ Included in Engine Gasket Set-See Ref. No. 358.
 ● Included in Carburetor Overhaul Kit-See Ref. No. 121.

◆ Included in Carburetor Gasket Set-See Ref. No.977.
 ⌘ Included in Valve Overhaul Gasket Set-See Ref. No. 1095.



◆ Included in Carburetor Gasket Set—See Ref. No.977.
 Ø Included in Valve Overhaul Gasket Set—See Ref. No. 1095.

12J700 to 12J799

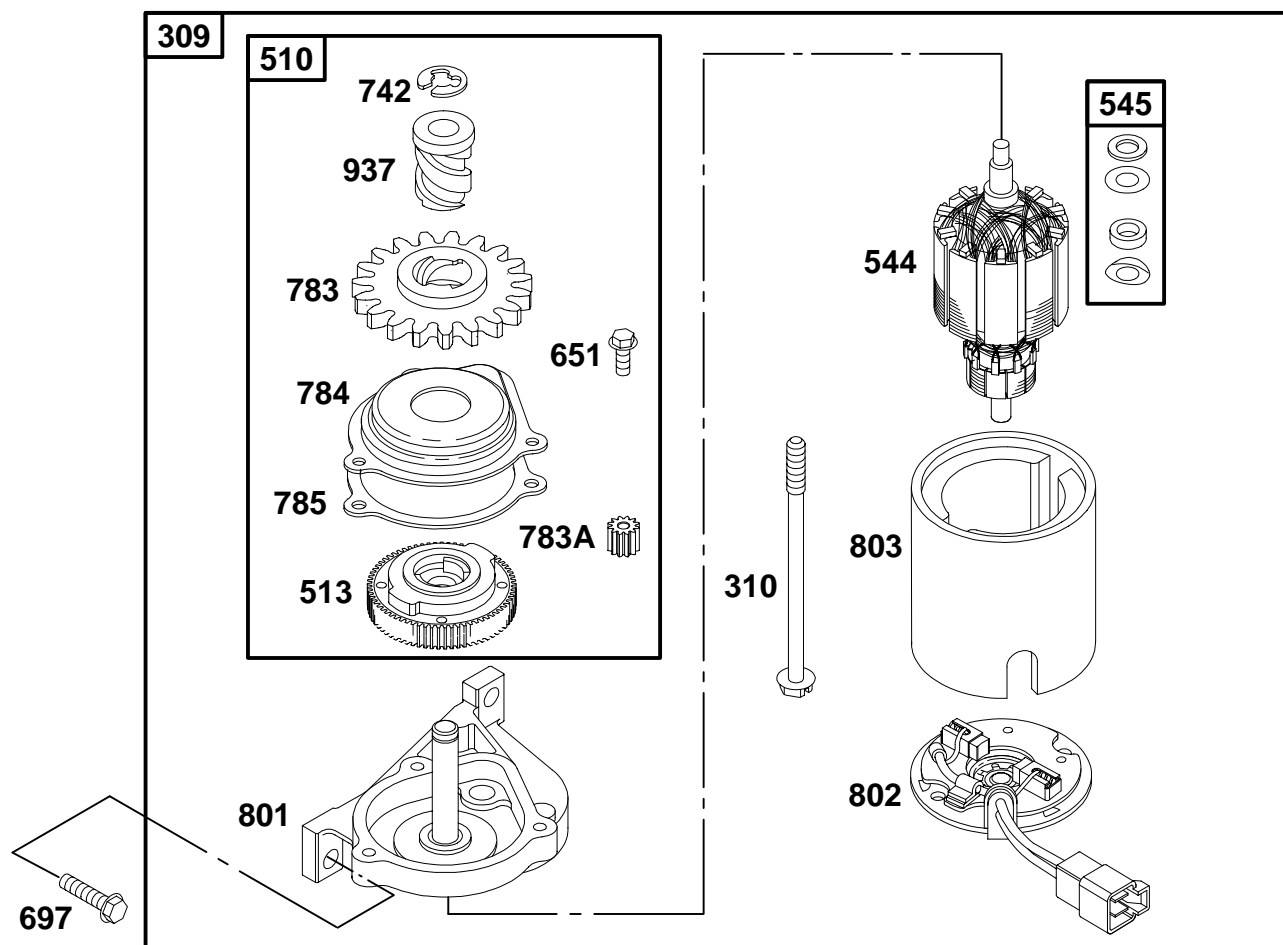


REF. NO.	PART NO.	DESCRIPTION	REF. NO.	PART NO.	DESCRIPTION	REF. NO.	PART NO.	DESCRIPTION
55	691421	Rewind Starter Housing	58	280399	Starter Rope (Cut to Required Length)	459	281505	Pawl-Ratchet
56	498144	Pulley/Spring Assembly	60	281434	Starter Rope Grip	461	94943	Screw (Pawl Friction Plate)
57	498144	Pulley/Spring Assembly	65	94904	Screw (Rewind Starter)	592	94908	Nut (Rewind Starter)
			456	281503	Pawl Friction Plate	608	497680	Starter-Rewind
						689	263073	Friction Spring

★ Included in Engine Gasket Set—See Ref. No. 358.
 ● Included in Carburetor Overhaul Kit—See Ref. No. 121.

◆ Included in Carburetor Gasket Set—See Ref. No.977.
 ∅ Included in Valve Overhaul Gasket Set—See Ref. No. 1095.

12J700 to 12J799

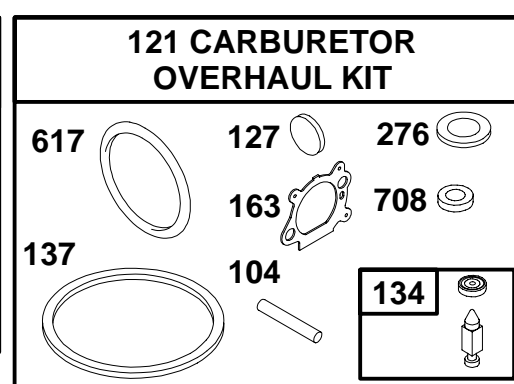
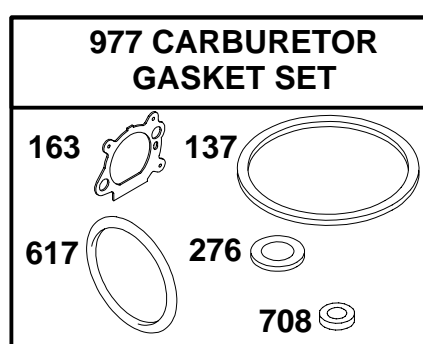
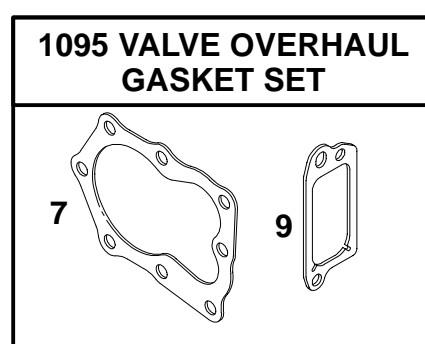
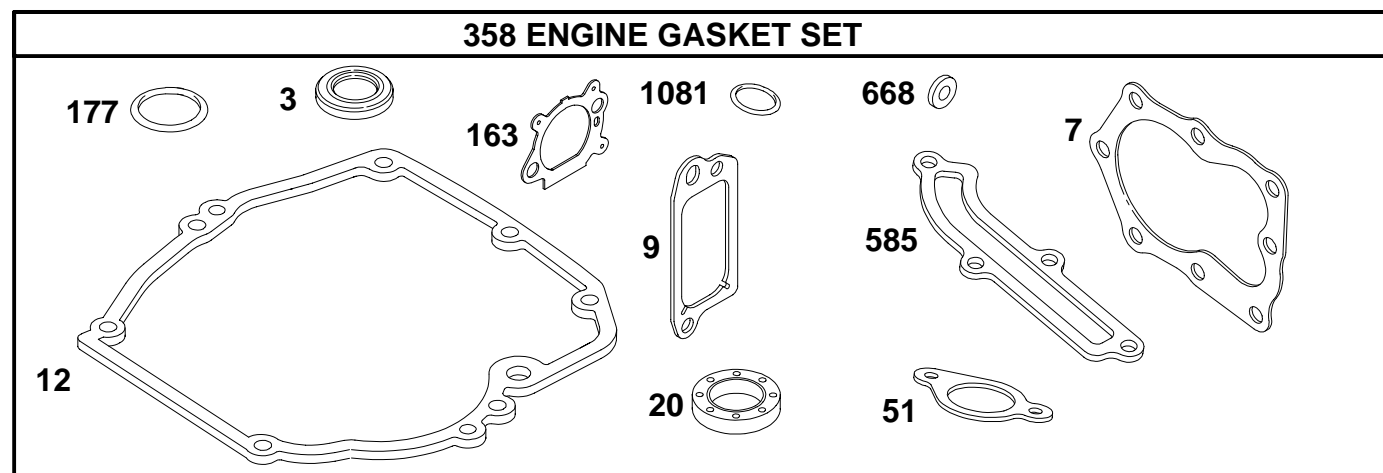


REF. NO.	PART NO.	DESCRIPTION	REF. NO.	PART NO.	DESCRIPTION	REF. NO.	PART NO.	DESCRIPTION
309	691376	Motor—Starter	651	93490	Screw (Starter Gear Cover)	784	692341	Starter Gear Cover
310	692327	Screw (Starter Motor)	697	691127	Screw (Drive Cap)	785	692352	Starter Cover Gasket
510	494147	Drive—Starter	742	93941	Retainer	801	690782	Drive Cap
513	692358	Clutch—Drive	783	281127	Gear—Pinion	802	690787	End Cap
544	690786	Starter Armature	783A	691269	Gear—Pinion	803	690785	Housing—Starter
545	492919	Shim Set				937	691325	Spline—Starter

★ Included in Engine Gasket Set—See Ref. No. 358.
● Included in Carburetor Overhaul Kit—See Ref. No. 121.

◆ Included in Carburetor Gasket Set—See Ref. No. 977.
⌀ Included in Valve Overhaul Gasket Set—See Ref. No. 1095.

12J700 to 12J799



REF. NO.	PART NO.	DESCRIPTION	REF. NO.	PART NO.	DESCRIPTION	REF. NO.	PART NO.	DESCRIPTION
	3 ★299819	Oil Seal (Magneto Side)		137 ♦♦	Float Bowl Gasket (Sold in Kit Only)		668 ★493823	Spacer (Includes 2)
	7 ★Ø272916	Cylinder Head Gasket		163 ★♦♦272653	Air Cleaner Gasket		708 ♦♦691321	Dust Seal
	9 ★Ø272481	Breather Gasket		177 ★280393	O-Ring Seal (Dipstick)		977 498261	Gasket Set—Carburetor
	12 ★272198	Crankcase Gasket		276 ♦♦	Sealing Washer (Sold in Kit Only)		1081 ★280966	O-Ring Seal (Dipstick Tube)
	20 ★399781	Oil Seal (PTO Side)		358 497316	Engine Gasket Set		1095 498528	Valve Overhaul Gasket Set
	51 ★272199	Intake Gasket		585 ★692342	Breather Passage Gasket			
	104 ♦691242	Float Hinge Pin		617 ♦♦270344	O-Ring Seal (Intake Manifold)			
	121 498260	Carburetor Overhaul Kit						
	127 •	Welch Plug (Sold in Kit Only)						
	134 ♦398188	Needle/Seat Kit						

★ Included in Engine Gasket Set—See Ref. No. 358.
 • Included in Carburetor Overhaul Kit—See Ref. No. 121.

♦♦ Included in Carburetor Gasket Set—See Ref. No. 977.
 Ø Included in Valve Overhaul Gasket Set—See Ref. No. 1095.