

12G700 to 12G799

Illustrated Parts List

Model Series

12G700 to 12G799

TYPE NUMBERS

0505, 0607, 0608,
0611, 0614, 0617,
0621, 0624, 0626,
0628, 0629, 0639,
0648, 0650, 0701,
0703, 0711, 0717,
1708, 1714, 1726,
1728, 1729, 1739,
1748, 1801, 2615,
2616, 2625, 2626,
2650, 2651, 4711.

TO FIND**THE CORRECT NUMBER OF THE PART YOU NEED:
FOLLOW THE INSTRUCTIONS BELOW**

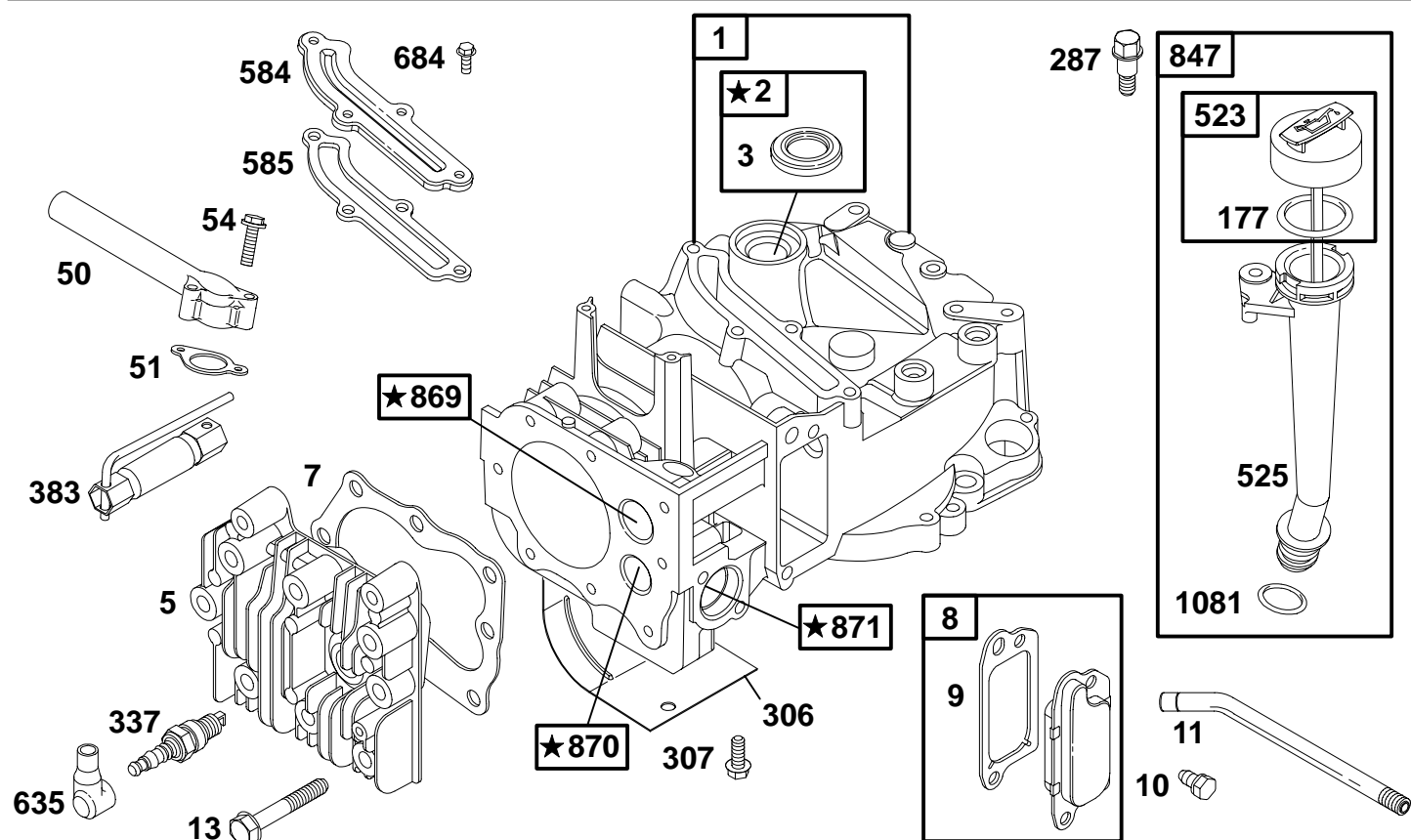
- A. Refer to Engine Model, Type and Code Number that is stamped on the blower housing of engine. Engine type numbers such as 0123 01 are listed only as 0123 in most instances. The two digits (01 or 02, etc.) to the right of the space may be required for more accurate parts identification in some instances. Select the Illustrated Parts List covering the correct Model Series and Type Number.
- B. Refer to the Illustrations and compare the original part with Illustration. The number next to the illustration is the Reference Number. Assemblies include all parts shown in frames. All parts shown in assembly frames having individual reference numbers can be purchased separately.
- C. After the Reference Number has been identified, refer to the Numerical text, where Reference and Primary Part Number are listed. **THE PRIMARY PART IS USED ON ALL TYPE NUMBERS EXCEPT THOSE TYPE NUMBERS UNDER "NOTE."**
- D. If a "Note" appears below the Primary Part Number, it means that this part differs from the Primary Part for certain types. If your Type number is listed under "Note," order the part referred to at the "Note."
- E. If your Engine Type Number does not appear after any part number listed under "Note," use the Primary Part Number.
- F. For Engine Type Numbers not covered by this book, check other Parts Lists having the same engine model or contact your source of supply.

PRINTED IN U.S.A.



COPYRIGHT by BRIGGS & STRATTON CORPORATION
All rights reserved. No part of this material may be reproduced or transmitted, in any form or by any means, electronic or mechanical, including photocopying, recording or by any information storage and retrieval system, without permission in writing from Briggs & Stratton Corporation.

12G700 to 12G799


1058 OWNER'S MANUAL
1019 LABEL KIT

★ REQUIRES SPECIAL TOOLS
TO INSTALL. SEE REPAIR
INSTRUCTION MANUAL.

REF. NO.	PART NO.	DESCRIPTION	REF. NO.	PART NO.	DESCRIPTION	REF. NO.	PART NO.	DESCRIPTION
1	494062	Cylinder Assembly	13	94547	Screw (Cylinder Head)	684	690345	Screw (Breather Passage Cover)
2	399269	Bushing/Seal Kit	50	497465	Intake Manifold	847	495263	Dipstick/Tube Assembly
3	★299819	Oil Seal (Magneto Side)	51	★272199	Intake Gasket	869	691155	Seat-Valve (Intake)
5	691160	Cylinder Head (Used After Code Date 98062200).	54	94526	Screw (Intake Manifold)	870	690380	Seat-Valve (Exhaust)
Note			177	★280393	O-Ring Seal (Dipstick)	871	262001	Bushing-Guide (Exhaust Valve)
	214626	Cylinder Head (Used Before Code Date 98062100 and After Code Date 96060200).	287	94511	Screw (Dipstick Tube)	Note		
	214349	Cylinder Head (Used Before Code Date 96060300).	306	690450	Shield-Cylinder	1019	494256	Label Kit
	7 ★272916	Cylinder Head Gasket	307	690345	Screw (Cylinder Shield)	1058	273693	Owner's Manual Emission Engines (Used After Code Date 97063000).
8	495786	Breather Assembly	337	802592	Spark Plug	272262 Owner's Manual Non Emission Engines		
9 ★272481		Breather Gasket	383	89838	Spark Plug Wrench	1081	★280966	O-Ring Seal (Dipstick Tube)
10	94650	Screw (Breather Assy)	523	495264	Dipstick			
11	231933	Breather Tube	525	495265	Dipstick Tube			
			584	692342	Breather Passage Cover			
			585	★272238	Breather Passage Gasket			
			635	66538	Spark Plug Boot			

★ Included in Engine Gasket Set—See Ref. No. 358.
● Included in Carburetor Overhaul Kit—See Ref. 121.

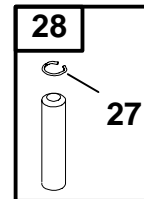
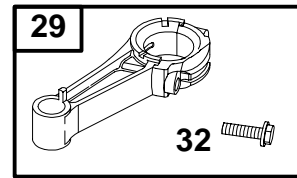
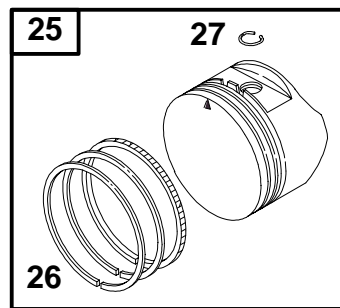
◆ Included in Carburetor Gasket Set—See Ref. 977.
◊ Included in Valve Overhaul Gasket Set—See Ref. No. 1095.

0475-2

Assemblies include all parts shown in frames.

69

12G700 to 12G799

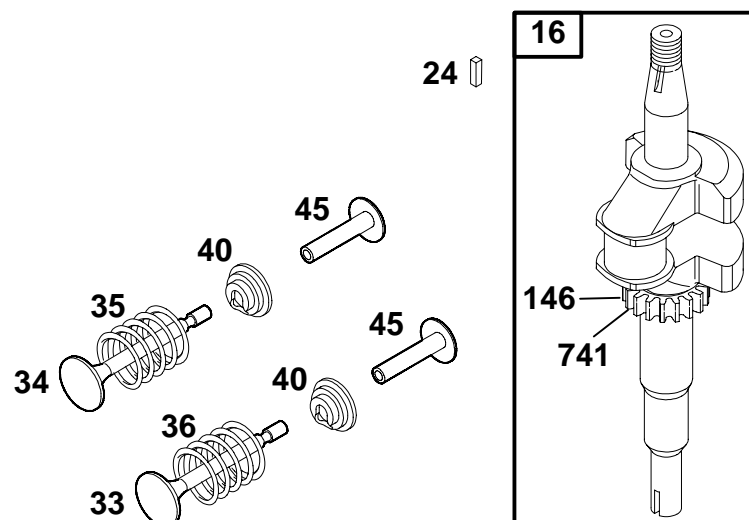


REF. NO.	PART NO.	DESCRIPTION	REF. NO.	PART NO.	DESCRIPTION	REF. NO.	PART NO.	DESCRIPTION
25	499433	Piston Assembly (Standard) (Used After Code Date 97011200). ———— Note ——— 494058 Piston Assy. (Standard) (Used Before Code Date 97011300). 499434 Piston Assy. (.010" O.S.) (Used After Code Date 97011200). 494059 Piston Assy. (.010" O.S.) (Used Before Code Date 97011300). 499435 Piston Assy. (.020" O.S.) (Used After Code Date 97011200). 494060 Piston Assy. (.020" O.S.) (Used Before Code Date 97011300). 499436 Piston Assy. (.030" O.S.) (Used After Code Date 97011200). 494061 Piston Assy. (.030" O.S.) (Used Before Code Date 97011300).	26	690202	Ring Set (Standard) (Used After Code Date 97011200). ———— Note ——— 493261 Ring Set (Standard) (Used Before Code Date 97011300). 499426 Ring Set (.010" O.S.) (Used After Code Date 97011200). 493388 Ring Set (.010" O.S.) (Used Before Code Date 97011300). 499427 Ring Set (.020" O.S.) (Used After Code Date 97011200). 493389 Ring Set (.020" O.S.) (Used Before Code Date 97011300). 499428 Ring Set (.030" O.S.) (Used After Code Date 97011200). 493390 Ring Set (.030" O.S.) (Used Before Code Date 97011300).	27	263190	Piston Pin Lock (Used After Code Date 97011200). ———— Note ——— 26026 Piston Pin Lock (Used Before Code Date 97011300). 28 499423 Piston Pin (Standard) (Used After Code Date 97011200). ———— Note ——— 298909 Piston Pin (Standard) (Used Before Code Date 97011300). 298908 Piston Pin (.005" O.S.) (Used Before Code Date 97011300). 29 499424 Connecting Rod (Standard) (Used After Code Date 97011200). ———— Note ——— 490566 Connecting Rod (Standard) (Used Before Code Date 97011300). 490743 Connecting Rod (.020" Undersize) (Used Before Code Date 97011300). 32 94699 Screw (Connecting Rod)

★ Included in Engine Gasket Set—See Ref. No. 358.
● Included in Carburetor Overhaul Kit—See Ref. 121.

◆ Included in Carburetor Gasket Set—See Ref. 977.
◊ Included in Valve Overhaul Gasket Set—See Ref. No. 1095.

12G700 to 12G799

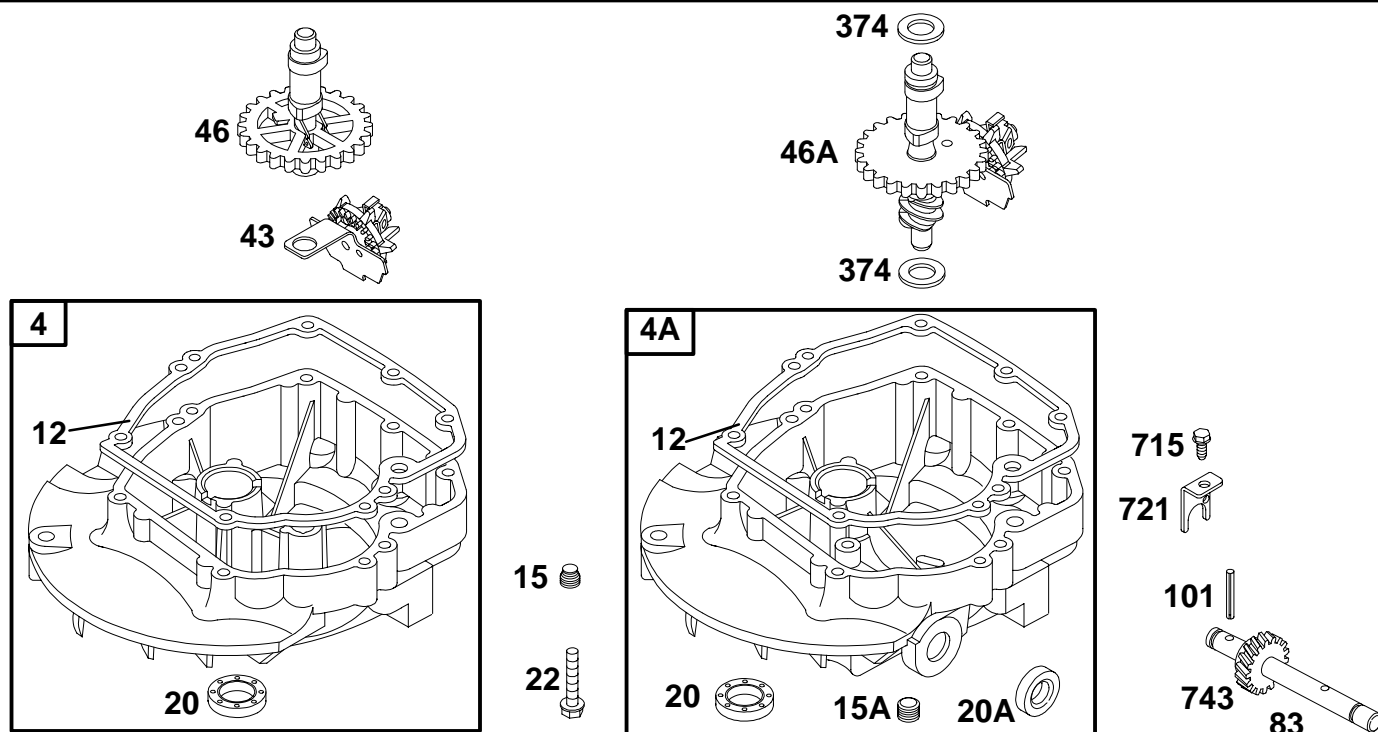


REF. NO.	PART NO.	DESCRIPTION	REF. NO.	PART NO.	DESCRIPTION	REF. NO.	PART NO.	DESCRIPTION
16	691451	Crankshaft (Used After Code Date 97011200). Note 493362 Crankshaft (Used Before Code Date 97011300). 691450 Crankshaft (Used After Code Date 97011200). Used on Type No(s). 0608, 1708, 2625. 493282 Crankshaft (Used Before Code Date 97011300). Used on Type No(s). 0608, 2625. 691452 Crankshaft (Used After Code Date 97011200). Used on Type No(s). 0624, 0650, 2616. 493363 Crankshaft (Used Before Code Date 97011300). Used on Type No(s). 0624, 0650, 2616.			691453 Crankshaft (Used After Code Date 97011200). Used on Type No(s). 0703. 690794 Crankshaft (Used Before Code Date 97011300). Used on Type No(s). 0703. 691454 Crankshaft (Used After Code Date 97011200). Used on Type No(s). 2626. 493946 Crankshaft (Used Before Code Date 97011300). Used on Type No(s). 2626. 691455 Crankshaft (Used After Code Date 97011200). Used on Type No(s). 0505, 0607, 0717. 691375 Crankshaft (Used Before Code Date 97011300). Used on Type No(s). 0505, 0607, 0717.			24 222698 Flywheel Key 33 262651 Exhaust Valve 34 262652 Intake Valve 35 691270 Valve Spring (Intake) 36 691270 Valve Spring (Exhaust) 40 93312 Valve Retainer 45 690548 Valve Tappet 146 94388 Timing Key 741 262598 Gear-Timing

★ Included in Engine Gasket Set—See Ref. No. 358.
● Included in Carburetor Overhaul Kit—See Ref. 121.

◆ Included in Carburetor Gasket Set—See Ref. 977.
◊ Included in Valve Overhaul Gasket Set—See Ref. No. 1095.

12G700 to 12G799



REF. NO.	PART NO.	DESCRIPTION	REF. NO.	PART NO.	DESCRIPTION	REF. NO.	PART NO.	DESCRIPTION
4	493279	Engine Sump Note 497318 Engine Sump Used on Type No(s). 0610, 0611.	46A	691460	Camshaft (Clockwise) (Used After Code Date 96060200). Note 493740 Camshaft (Clockwise) (Used Before Code Date 96060300).			690522 Auxillary Drive Shaft Used on Type No(s). 0628, 0629, 0824, 0825, 1728, 1729, 2650, 2651.
4A	493365	Engine Sump			691459 Camshaft (Counterclockwise) (Used After Code Date 96060200). Used on Type No(s). 0628, 0629, 1728, 1729, 2651.	101	93474	Shaft Pin
12	★272198	Crankcase Gasket			493738 Camshaft (Counterclockwise) (Used Before Code Date 96060300). Used on Type No(s). 0628, 0629, 2651.	374	691074	Washer (Camshaft)
15	94880	Oil Drain Plug				715	94929	Screw (Shaft Stop)
15A	691093	Oil Drain Plug				721	690449	Shaft Stop
20	★399781	Oil Seal (PTO Side)				743	231279	Gear-Drive (Counterclockwise) Used on Type No(s). 0632, 0665, 0667, 0679, 0688, 0705, 1728.
20A	391484	Oil Seal (PTO Side)						Note 690516 Gear-Drive (Clockwise) Used on Type No(s). 0614, 0648, 0711, 0863, 0907, 1714, 1748, 1936, 2007, 2650, 4907.
22	691092	Screw (Crankcase Cover/ Sump)						
		Note 94612 Screw (Crankcase Cover/ Sump) (One Used in Hole Nearest Breather)						
43	493737	Governor/Oil Slinger	83	231671	Auxiliary Drive Shaft Note 690521 Auxiliary Drive Shaft Used on Type No(s). 0648, 0907, 1748, 2007, 4907.			
46	691449	Camshaft (Used After Code Date 96060200). Note 492830 Camshaft (Used Before Code Date 96060300).						

★ Included in Engine Gasket Set—See Ref. No. 358.
● Included in Carburetor Overhaul Kit—See Ref. 121.

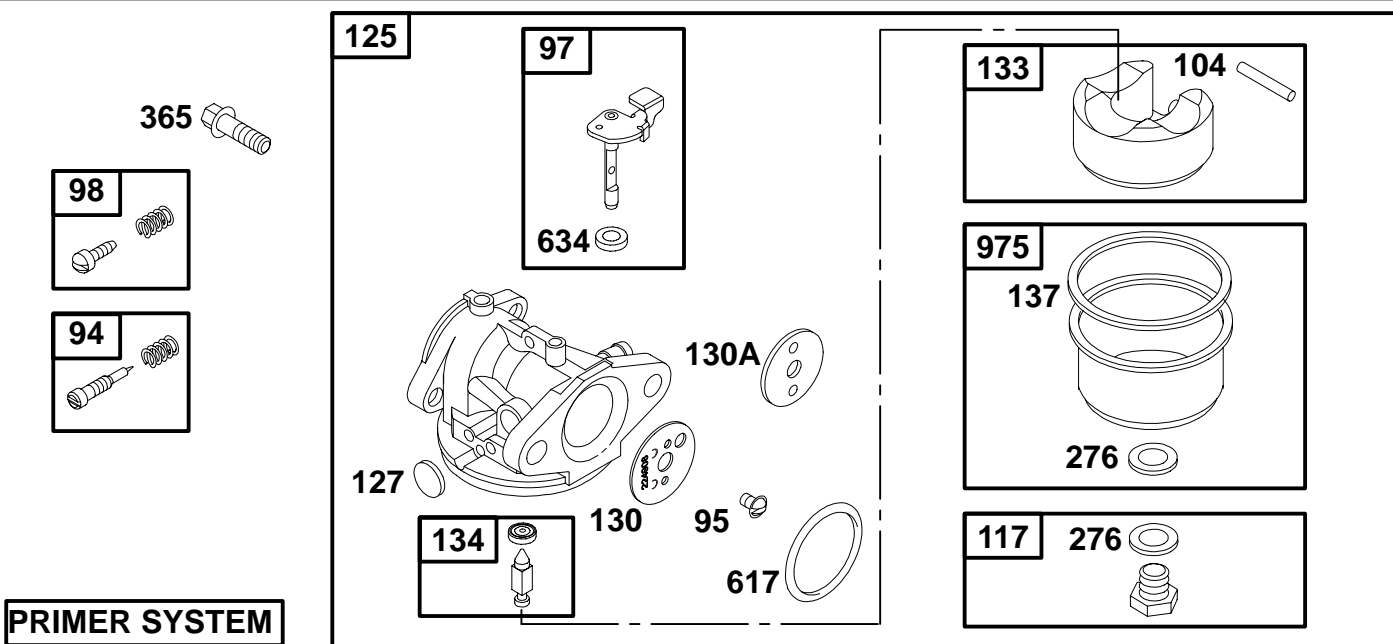
◆ Included in Carburetor Gasket Set—See Ref. 977.
◊ Included in Valve Overhaul Gasket Set—See Ref. No. 1095.

0475-5

Assemblies include all parts shown in frames.

69

12G700 to 12G799



REF. NO.	PART NO.	DESCRIPTION	REF. NO.	PART NO.	DESCRIPTION	REF. NO.	PART NO.	DESCRIPTION
94	●493765	Idle Mixture Kit (Used Before Code Date 94070400). Used on Type No(s). 0639.				127	●	Welch Plug (Sold in Kit Only)
95	94098	Screw (Throttle Valve)			496495 Main Jet (High Altitude) (Used After Code Date 96060200).	130	691203	Throttle Valve
97	493267	Throttle Shaft			497348 Main Jet (High Altitude) (Used After Code Date 95102900 and Before Code Date 96060300).	130A	691181	Throttle Valve (Used Before Code Date 94070400).
98	398185	Idle Speed Kit (Used Before Code Date 94070400).			496495 Main Jet (High Altitude) (Used After Code Date 94070300 and Before Code Date 95103000).	133	398187	Carburetor Float
104	●691242	Float Hinge Pin			494870 Main Jet (High Altitude) (Used Before Code Date 94070400).	134	●398188	Needle/Seat Kit
117	498975	Main Jet (Standard) (Used After Code Date 96060200).			498255 Carburetor (Used After Code Date 95102900 and Before Code Date 96060300).	137	◆◆	Float Bowl Gasket (Sold in Kit Only)
		Note			497586 Carburetor (Used After Code Date 94070300 and Before Code Date 95103000).	276	◆◆	Washer (Sold in Kit Only)
		497315 Main Jet (Standard) (Used After Code Date 95102900 and Before Code Date 96060300).	125	498966	Carburetor (Used After Code Date 96060200).	365	692524	Screw (Carburetor)
		497466 Main Jet (Standard) (Used After Code Date 94070300 and Before Code Date 95103000).			Note	617	◆◆270344	O-Ring Seal (Intake Manifold)
		493637 Main Jet (Standard) (Used Before Code Date 94070400).			496114 Carburetor (Used Before Code Date 94070400).	634	◆◆	Washer (Sold in Kit Only)
						975	493640	Float Bowl

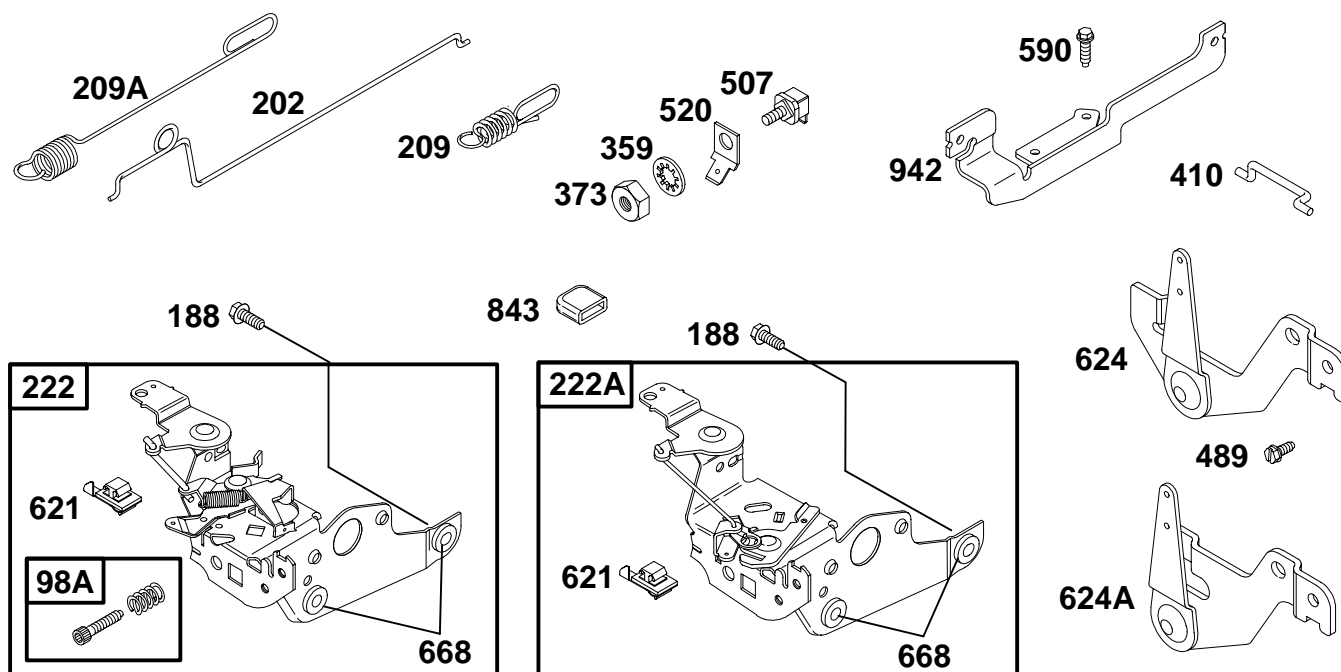
★ Included in Engine Gasket Set—See Ref. No. 358.
● Included in Carburetor Overhaul Kit—See Ref. 121.

◆ Included in Carburetor Gasket Set—See Ref. 977.
◊ Included in Valve Overhaul Gasket Set—See Ref. No. 1095.



◆ Included in Carburetor Gasket Set—See Ref. 977.
 Ø Included in Valve Overhaul Gasket Set—See Ref. No. 1095.

12G700 to 12G799

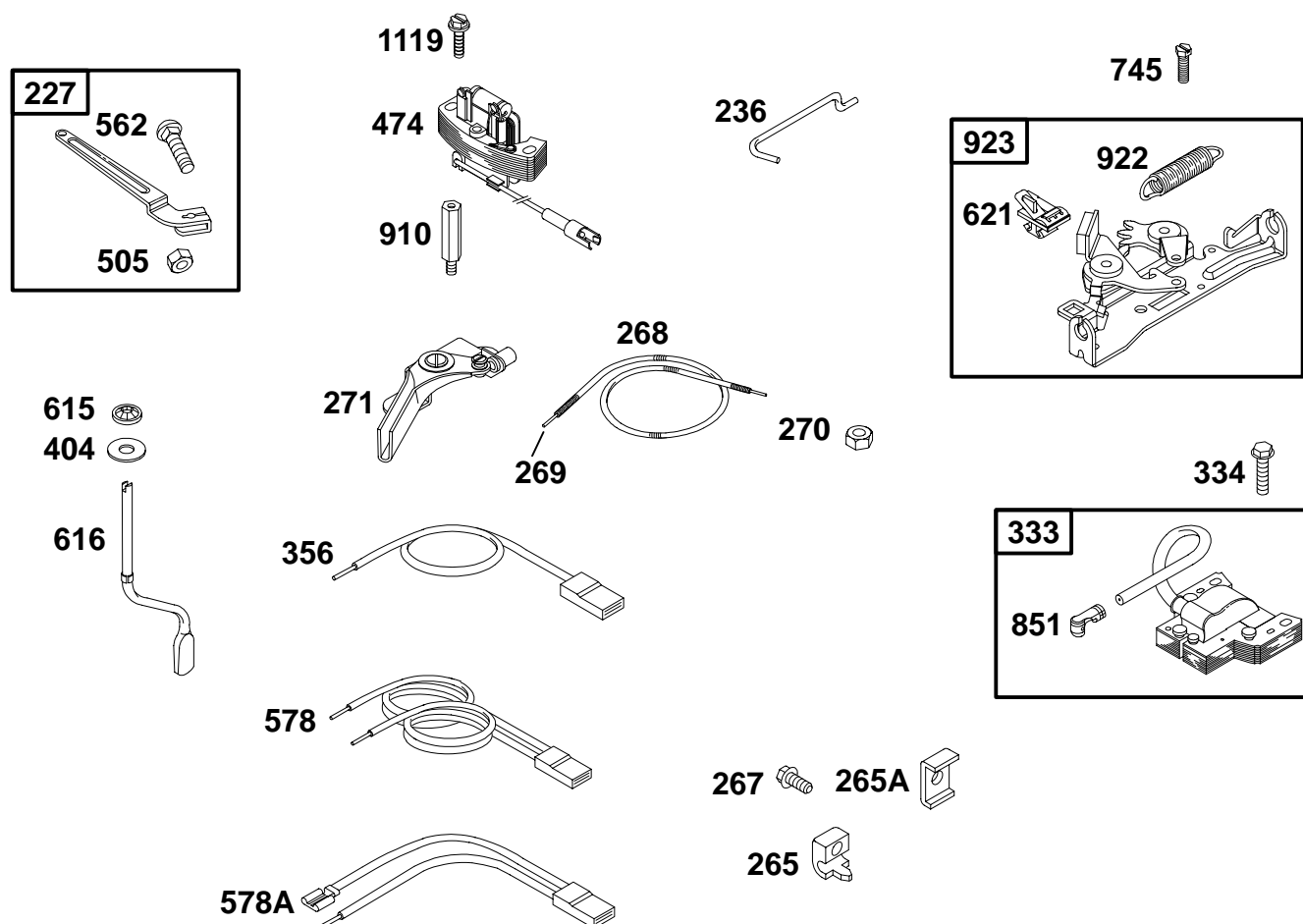


REF. NO.	PART NO.	DESCRIPTION	REF. NO.	PART NO.	DESCRIPTION	REF. NO.	PART NO.	DESCRIPTION
98A	493280	Idle Speed Kit	209A	691290	Governor Spring Used on Type No(s). 0639.	222A	497203	Control Bracket Used with Primer Type Carburetors
188	691147	Screw (Control Bracket)			Note	359	691077	Washer (Ground Terminal)
202	262579	Mechanical Governor Link		691291	Governor Spring	373	90576	Nut (Ground Terminal)
209	262665	Governor Spring			Used on Type No(s). 0505, 0607, 0614, 0626, 0648, 0701, 1714, 1726, 1748, 1714, 1801.	410	690575	Control Link
		Note		263044	Governor Spring	489	94882	Screw (Linkage Lever)
	690568	Governor Spring			Used on Type No(s). 0621, 0624, 0650, 1728, 1729.	507	398525	Insulator
		Used on Type No(s). 0703, 0711, 0717		691292	Governor Spring	520	691084	Ground Terminal
	691275	Governor Spring			Used on Type No(s). 0608, 1708.	590	93758	Screw (Brake Bracket)
		Used on Type No(s). 0617, 0840.	222	690839	Control Bracket Used with Choke Type Carburetors	621	396847	Switch-Stop
	691834	Governor Spring			Note	624	494112	Lever-Linkage
		Used on Type No(s). 0625, 0628, 2615.		495975	Control Bracket	624A	691419	Lever-Linkage
	691276	Governor Spring			Used on Type No(s). 0611, 0617.	668	★493823	Spacer (Includes 2)
		Used on Type No(s). 0611.			Used with Choke Type Carburetors	843	272616	Sleeve-Lever
						942	690455	Bracket-Brake

★ Included in Engine Gasket Set-See Ref. No. 358.
● Included in Carburetor Overhaul Kit-See Ref. 121.

◆ Included in Carburetor Gasket Set-See Ref. 977.
◊ Included in Valve Overhaul Gasket Set-See Ref. No. 1095.

12G700 to 12G799



REF. NO.	PART NO.	DESCRIPTION	REF. NO.	PART NO.	DESCRIPTION	REF. NO.	PART NO.	DESCRIPTION
227	690783	Governor Control Lever	271	290568	Control Lever	578A	690650	Wire Assembly
236	262461	Link-Lock Out	333	802574	Magneto Armature	615	690340	Retainer-Governor Shaft
265	213146	Casing Clamp	334	94731	Screw (Magneto Armature)	616	691306	Governor Crank
265A	22372	Casing Clamp	356	692390	Stop Wire	621	396847	Switch-Stop
267	94882	Screw (Casing Clamp)	404	690272	Washer (Governor Crank)	745	94512	Screw (Brake)
268	691072	Control Wire Casing (Cut to Required Length)	474	492841	Alternator Nut	851	493880	Spark Plug Terminal
269	26099	Control Wire (Cut to Required Length)	505	231082	(Governor Control Lever)	910	691094	Stud (Alternator)
270	63426	Nut (Control Wire Casing)	562	92613	Bolt (Governor Control Lever)	922	262640	Spring-Brake
			578	398153	Wire Assembly	923	493442	Brake
						1119	94512	Screw (Alternator)

★ Included in Engine Gasket Set-See Ref. No. 358.
 ● Included in Carburetor Overhaul Kit-See Ref. 121.

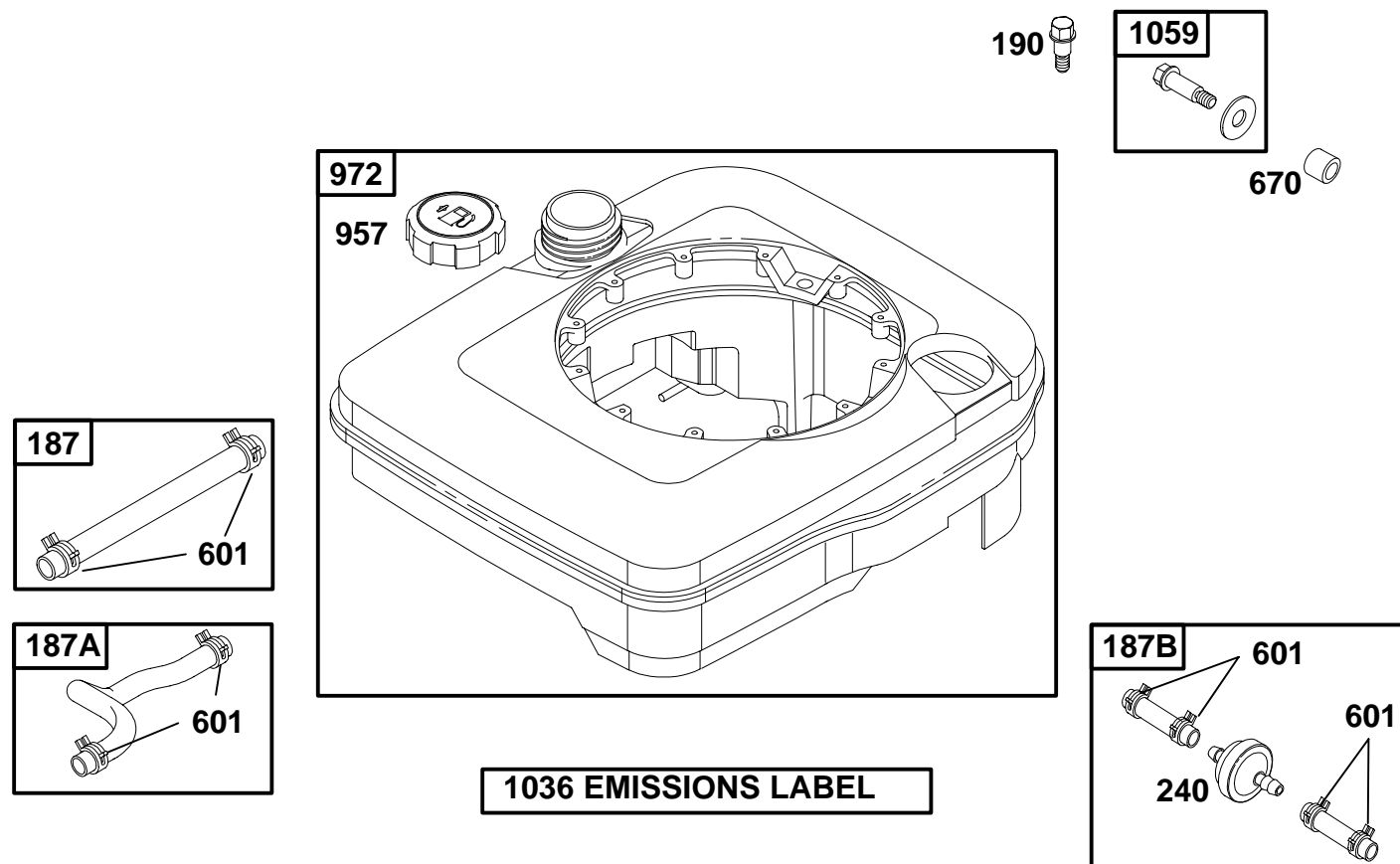
◆ Included in Carburetor Gasket Set-See Ref. 977.
 ◇ Included in Valve Overhaul Gasket Set-See Ref. No. 1095.

0475-9

Assemblies include all parts shown in frames.

69

12G700 to 12G799

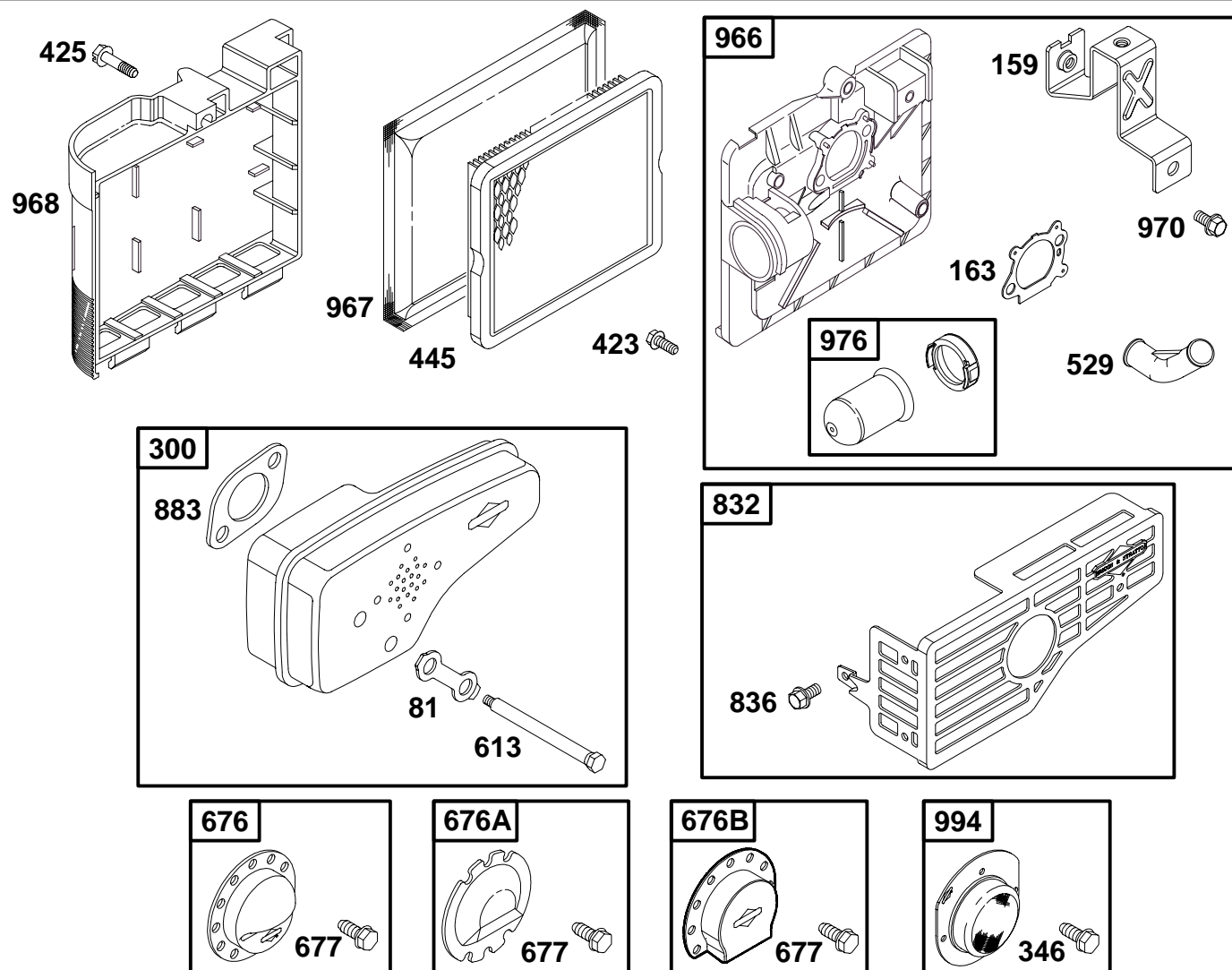


REF. NO.	PART NO.	DESCRIPTION	REF. NO.	PART NO.	DESCRIPTION	REF. NO.	PART NO.	DESCRIPTION
187	492790	Fuel Line (Cut to Required Length)	972	497227	Fuel Tank (Black) (Used After Code Date 94070300).	1036	694458	Emissions Label (Used After Code Date 98123100).
187A	691371	Fuel Line (Molded)			Note			Note
187B	498171	Fuel Line		497226	Fuel Tank (Black) (Used Before Code Date 94070400).		499341	Emissions Label (Used After Code Date 97063000 and Before Code Date 99010100).
190	94511	Screw (Fuel Tank)		497224	Fuel Tank (Red)		499340	Emissions Label (Used Before Code Date 97070100).
240	298090	Fuel Filter				1059	398540	Screw/Washer Kit
601	93053	Hose Clamp						
670	280512	Fuel Tank Spacer						
957	397974	Fuel Tank Cap						

★ Included in Engine Gasket Set—See Ref. No. 358.
● Included in Carburetor Overhaul Kit—See Ref. 121.

◆ Included in Carburetor Gasket Set—See Ref. 977.
◊ Included in Valve Overhaul Gasket Set—See Ref. No. 1095.

12G700 to 12G799

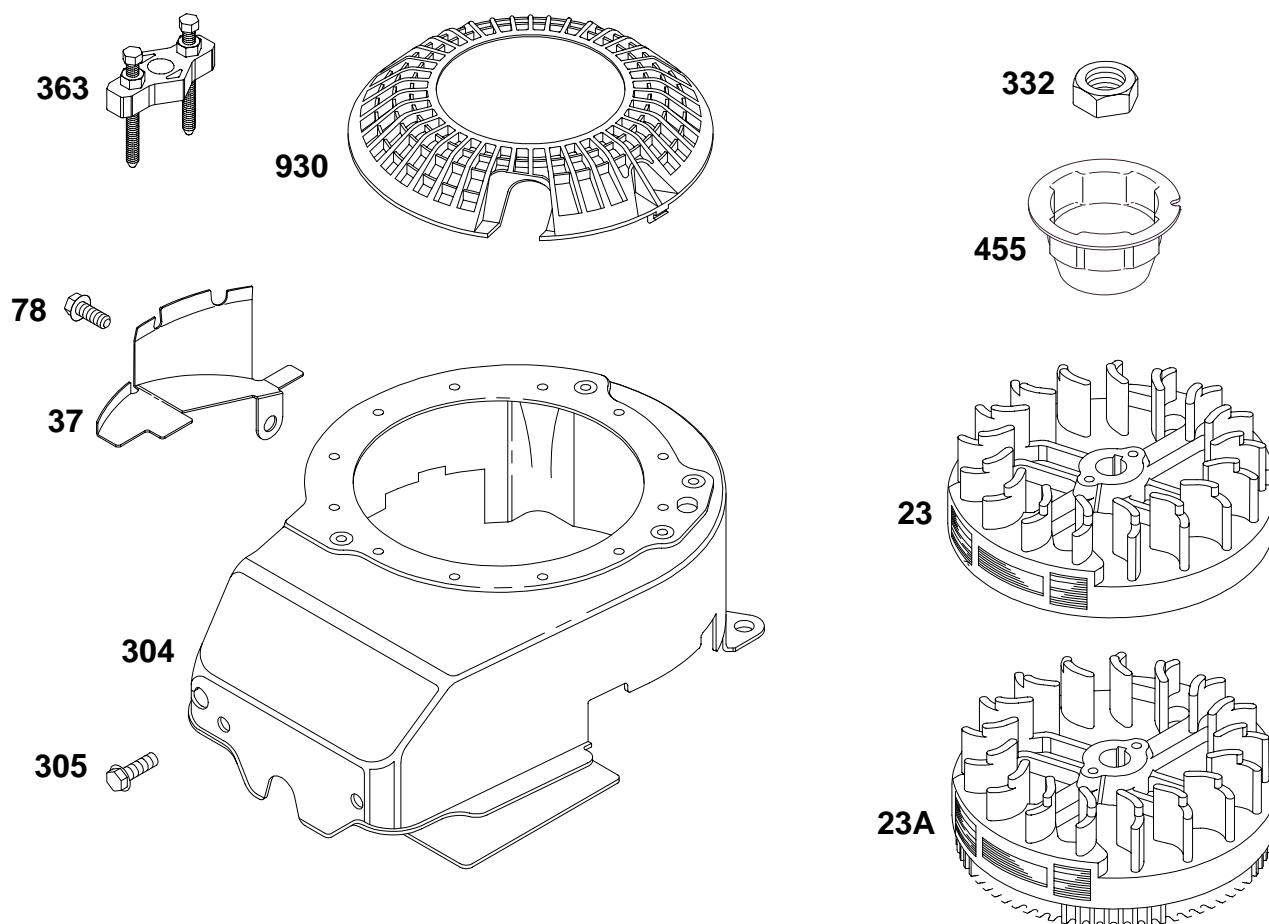


REF. NO.	PART NO.	DESCRIPTION	REF. NO.	PART NO.	DESCRIPTION	REF. NO.	PART NO.	DESCRIPTION
81	223664	Muffler Screw Lock	529	281299	Grommet	967	493537	Pre-Cleaner Filter
159	224815	Air Cleaner Primer Bracket	613	94231	Screw (Exhaust Muffler)	968	281340	Cover-Air Cleaner
163★◆	272653	Air Cleaner Gasket	676	396548	Muffler Deflector	970	94749	Screw (Air Cleaner Bracket)
300	496106	Muffler-Exhaust	676A	393756	Muffler Deflector	976	694395	Carburetor Primer (Used After Code Date 99103100).
346	94896	Screw (Spark Arrester)	676B	393760	Muffler Deflector	Note 496115 Carburetor Primer (Used Before Code Date 99110100). 994 398067 Spark Arrester		
423	94873	Screw (Air Cleaner Base)	677	94896	Screw (Muffler Deflector)			
425	94872	Screw (Air Cleaner Cover)	832	499034	Guard-Muffler			
445	491588	Filter-Air Cleaner Cartridge	836	94874	Screw (Muffler Guard)			
			883	691881	Exhaust Gasket			
			966	496116	Air Cleaner Base			

★ Included in Engine Gasket Set-See Ref. No. 358.
 ◆ Included in Carburetor Overhaul Kit-See Ref. 121.

◆ Included in Carburetor Gasket Set-See Ref. 977.
 ○ Included in Valve Overhaul Gasket Set-See Ref. No. 1095.

12G700 to 12G799



REF. NO.	PART NO.	DESCRIPTION	REF. NO.	PART NO.	DESCRIPTION	REF. NO.	PART NO.	DESCRIPTION
23	492177	Flywheel	304	493294	Housing-Blower	305	691108	Screw (Blower Housing)
23A	492893	Flywheel			Note	332	94877	Nut (Flywheel)
37	224511	Flywheel Guard		493293	Housing-Blower	363	19069	Flywheel Puller
78	691108	Screw (Flywheel Guard)			Used on Type No(s).	455	691219	Flywheel Cup
					0608, 0611, 0617,	930	281136	Guard-Rewind
					0621, 0626, 1708,			
					1726, 2615, 2616,			
					2625, 2626, 2650,			
					2651.			

★ Included in Engine Gasket Set—See Ref. No. 358.
 ● Included in Carburetor Overhaul Kit—See Ref. 121.

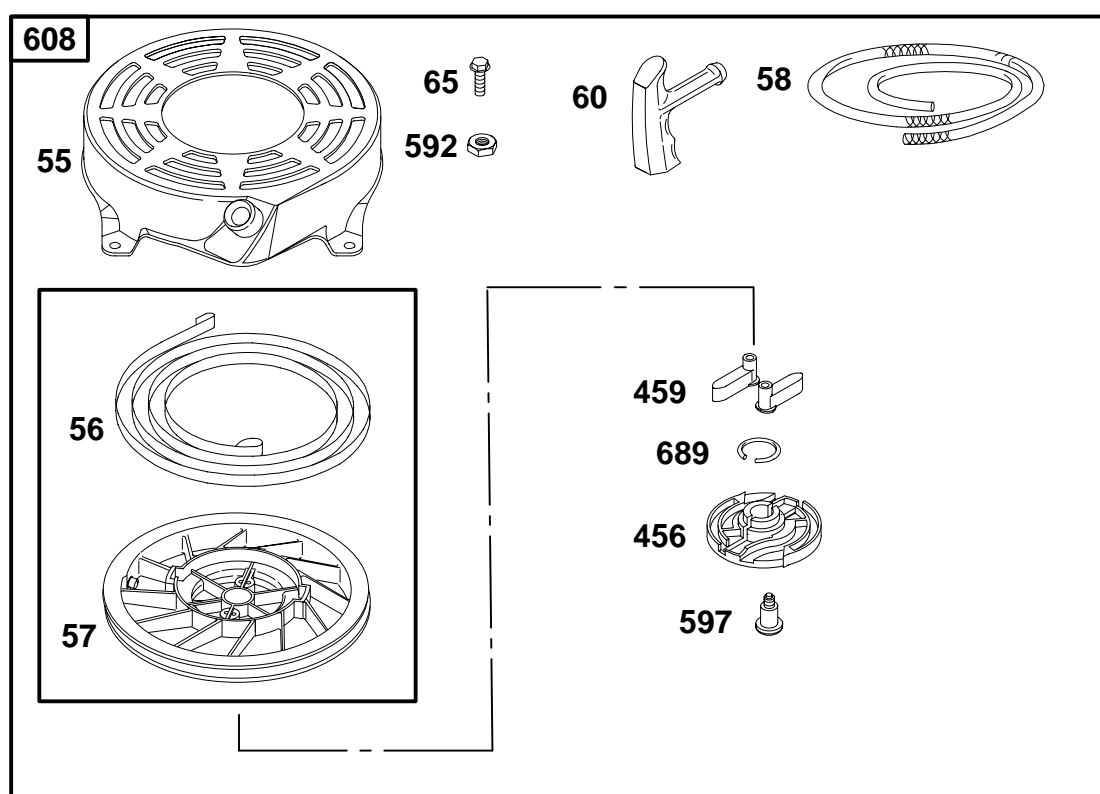
◆ Included in Carburetor Gasket Set—See Ref. 977.
 Ø Included in Valve Overhaul Gasket Set—See Ref. No. 1095.

0475-12

Assemblies include all parts shown in frames.

69

12G700 to 12G799



REF. NO.	PART NO.	DESCRIPTION	REF. NO.	PART NO.	DESCRIPTION	REF. NO.	PART NO.	DESCRIPTION
55	691421	Rewind Starter Housing	58	280399	Starter Rope (Cut to Required Length)	459	281505	Pawl-Ratchet
56	498144	Pulley/Spring Assembly	60	281434	Starter Rope Grip	592	94908	Nut (Rewind Starter)
57	498144	Pulley/Spring Assembly	65	94904	Screw (Rewind Starter)	597	94943	Screw (Pawl Friction Plate)
			456	281503	Plate-Pawl Friction	608	497680	Rewind Starter
						689	263073	Friction Spring

★ Included in Engine Gasket Set—See Ref. No. 358.
 ● Included in Carburetor Overhaul Kit—See Ref. 121.

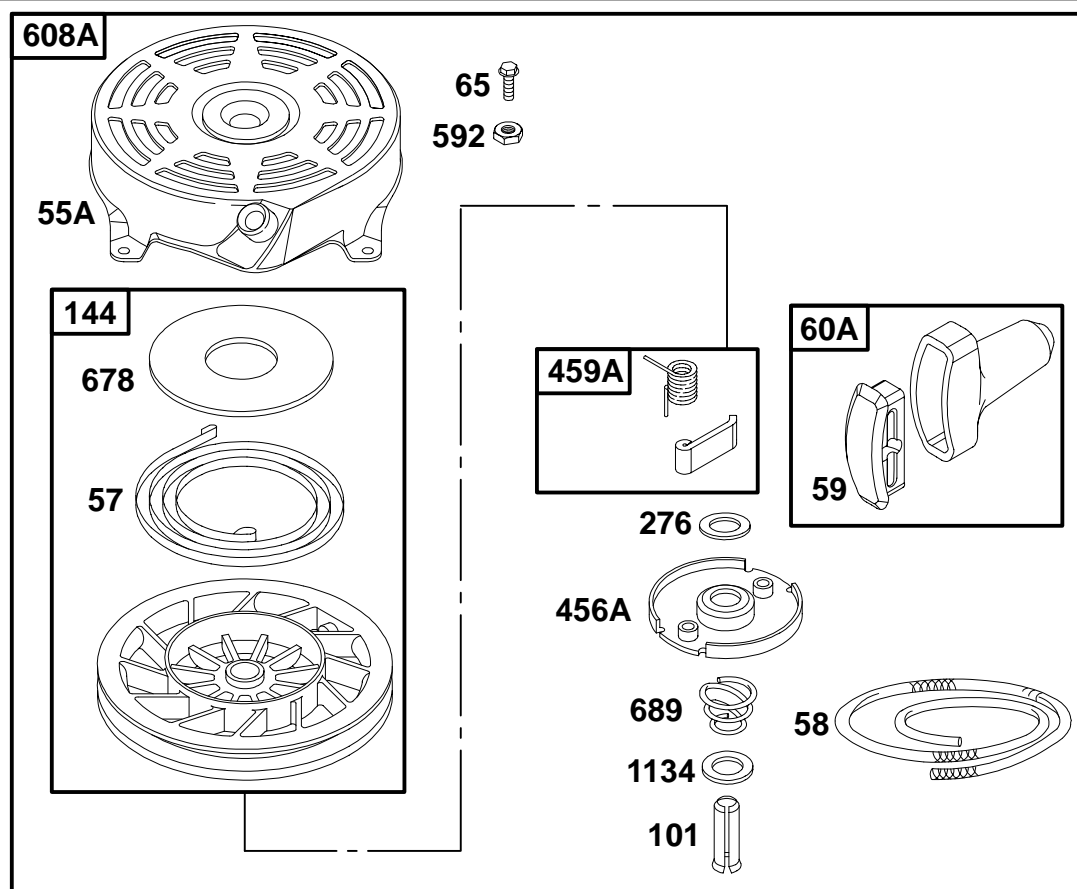
◆ Included in Carburetor Gasket Set—See Ref. 977.
 Ø Included in Valve Overhaul Gasket Set—See Ref. No. 1095.

0475-13

Assemblies include all parts shown in frames.

69

12G700 to 12G799



REF. NO.	PART NO.	DESCRIPTION	REF. NO.	PART NO.	DESCRIPTION	REF. NO.	PART NO.	DESCRIPTION
55A	492831	Rewind Starter Housing	65	94904	Screw (Rewind Starter)	608A	497598	Rewind Starter
57	491889	Rewind Starter Spring	101	262626	Shaft Pin			Includes:
58	280399	Starter Rope (Cut to Required Length)	144	493824	Starter Pulley			691219 Cup-Flywheel
			276	280973	Sealing Washer			691222 Screen-Rotating
59	396892	Grip Insert	455A	224250	Flywheel Cup	678	224278	Rewind Spacer
60A	393152	Starter Rope Grip	456A	224321	Pawl Friction Plate	689	262625	Friction Spring
			459A	492833	Pawl-Ratchet	1134	224322	Washer (Pawl Plate Friction)
			592	94908	Nut (Rewind Starter)			

★ Included in Engine Gasket Set—See Ref. No. 358.
 ● Included in Carburetor Overhaul Kit—See Ref. 121.

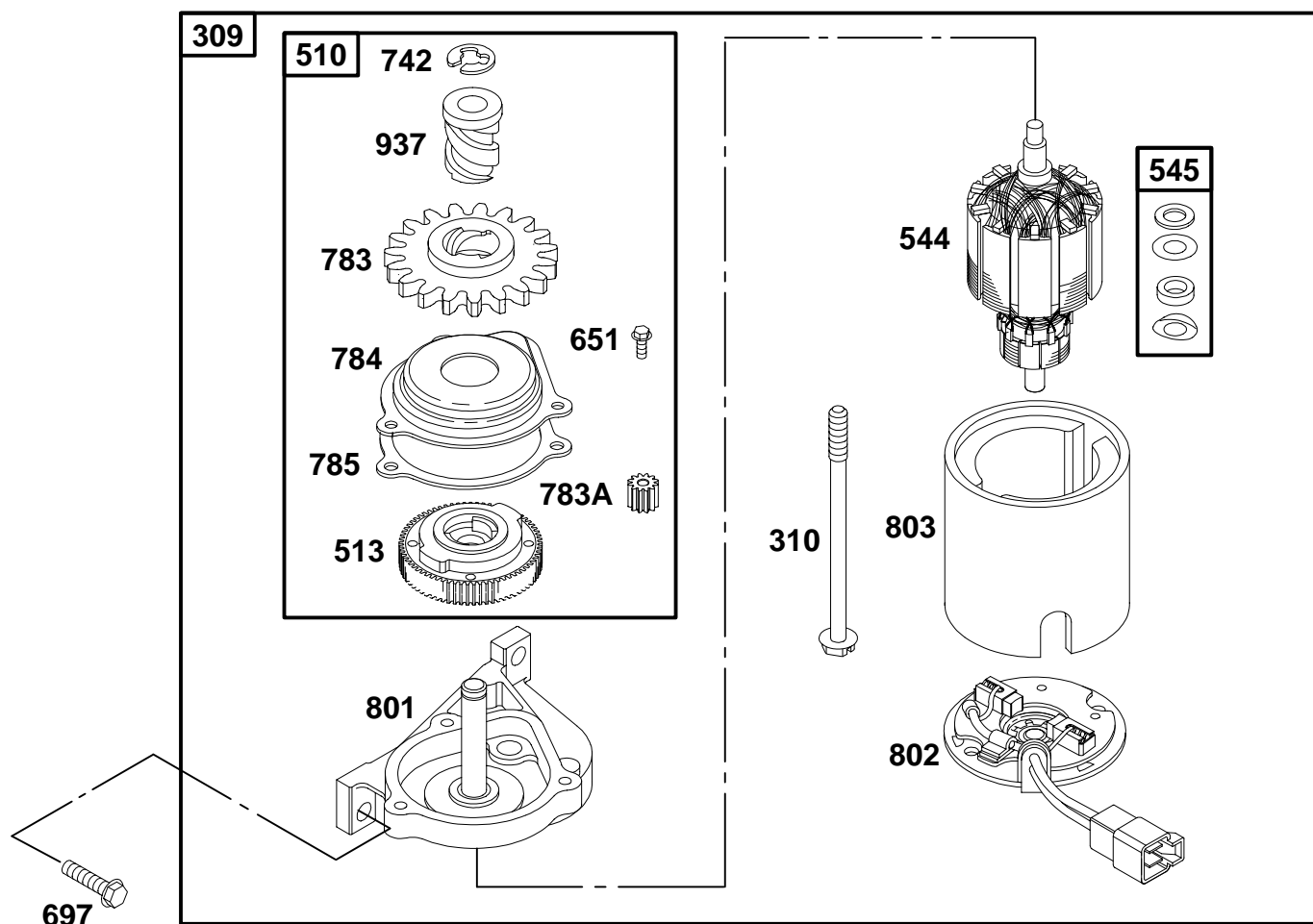
◆ Included in Carburetor Gasket Set—See Ref. 977.
 ◇ Included in Valve Overhaul Gasket Set—See Ref. No. 1095.

0475-14

Assemblies include all parts shown in frames.

69

12G700 to 12G799

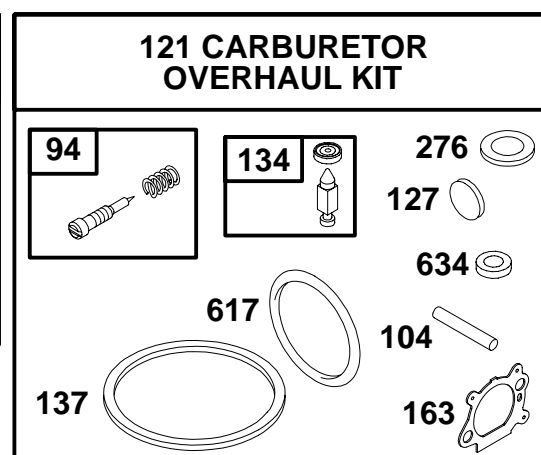
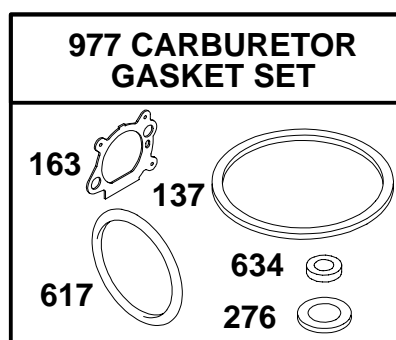
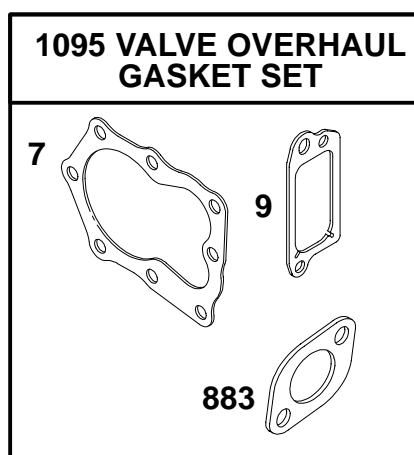
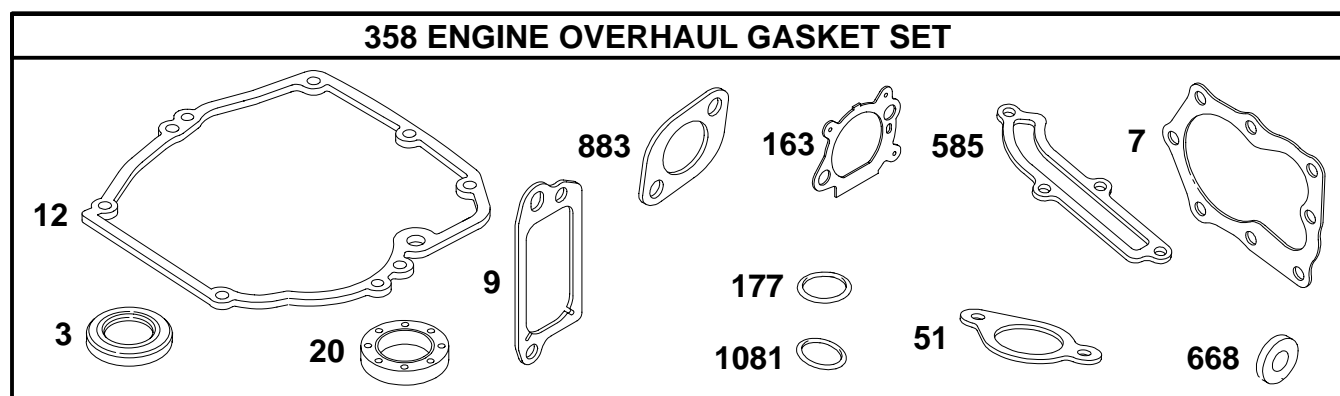


REF. NO.	PART NO.	DESCRIPTION	REF. NO.	PART NO.	DESCRIPTION	REF. NO.	PART NO.	DESCRIPTION
309	691376	Motor-Starter	545	492919	Washer Set (Starter Motor)	783	281127	Pinion Gear
310	692327	Bolt (Starter Motor)	651	93490	Screw (Starter Gear Cover)	783A	691269	Pinion Gear
510	494147	Drive-Starter	697	691127	Screw (Drive Cap)	784	692341	Starter Gear Cover
513	692358	Clutch-Drive	742	93941	E-Ring Retainer	785	692352	Starter Cover Gasket
544	690786	Starter Armature				801	690782	Drive Cap
						802	690787	End Cap
						803	690785	Starter Housing
						937	691325	Spline-Starter

★ Included in Engine Gasket Set—See Ref. No. 358.
 ● Included in Carburetor Overhaul Kit—See Ref. 121.

◆ Included in Carburetor Gasket Set—See Ref. 977.
 ∅ Included in Valve Overhaul Gasket Set—See Ref. No. 1095.

12G700 to 12G799



REF. NO.	PART NO.	DESCRIPTION	REF. NO.	PART NO.	DESCRIPTION	REF. NO.	PART NO.	DESCRIPTION
3	★299819	Oil Seal (Magneto Side)	121	498260	Carburetor Overhaul Kit (Used After Code Date 95110200).	276	◆	Sealing Washer (Sold in Kit Only)
7	★Ø272916	Cylinder Head Gasket			Note	358	497316	Engine Overhaul Gasket Set
9	★Ø272481	Breather Gasket			493762 Carburetor Overhaul Kit (Used Before Code Date 95110300).	585	★272238	Breather Passage Gasket
12	★272198	Crankcase Gasket				617	◆270344	O-Ring Seal (Intake Manifold)
20	★399781	Oil Seal (PTO Side)	127	•	Welch Plug (Sold in Kit Only)	634	◆	Washer (Sold in Kit Only)
51	★272199	Intake Gasket	134	◆398188	Needle/Seat Kit Gasket-Bowl (Sold in Kit Only)	668	★493823	Spacer (Includes 2)
94	◆493765	Idle Mixture Kit (Used Before Code Date 94070400). Used on Type No(s). 0639.	137	◆	Air Cleaner Gasket	883	★Ø691881	Exhaust Gasket
104	◆691242	Float Hinge Pin	177	★280393	O-Ring Seal (Dipstick)	977	498261	Gasket Set-Carburetor
						883	691881	Exhaust Gasket
						1081	★280966	O-Ring Seal (Dipstick Tube)
						1095	498528	Valve Overhaul Gasket Set

★ Included in Engine Gasket Set—See Ref. No. 358.
 • Included in Carburetor Overhaul Kit—See Ref. 121.

◆ Included in Carburetor Gasket Set—See Ref. 977.
 Ø Included in Valve Overhaul Gasket Set—See Ref. No. 1095.