



Date: March 18, 2003

Service Advisory

Product Line: ATV

Advisory No: SAA309

Subject: Countershaft (Secondary Transmission)

Affected Models:

All 2003 500 (Automatic Transmission) Models

It has come to our attention that the affected models may have been manufactured with two different type countershafts. Some of the affected models may have been manufactured with Countershaft (p/n 3402-820) and others manufactured with Countershaft (p/n 3402-732). Because of this difference, information in the 2003 Illustrated Parts Manuals and Parts Pro regarding the countershaft and related parts may not correspond with the existing parts in the ATV.

If it is necessary to order a replacement countershaft, be sure to first inspect the existing countershaft to ensure that the correct countershaft and related parts are ordered. Refer to the information in this advisory to determine the correct part numbers.

■ **NOTE:** If the affected ATV is equipped with Countershaft (p/n 3402-820), the replacement countershaft must be Countershaft (p/n 3402-820). Any related parts must also correspond with the parts listed in illustration 0738-592.

■ **NOTE:** If the affected ATV is equipped with Countershaft (p/n 3402-732), the replacement countershaft must be Countershaft (p/n 3402-732). Any related parts must also correspond with the parts listed in illustration 0737-772.

Thank you for your cooperation in this matter.

Sincerely,

Product Service Department
Arctic Cat Inc.



Printed in the U.S.A.



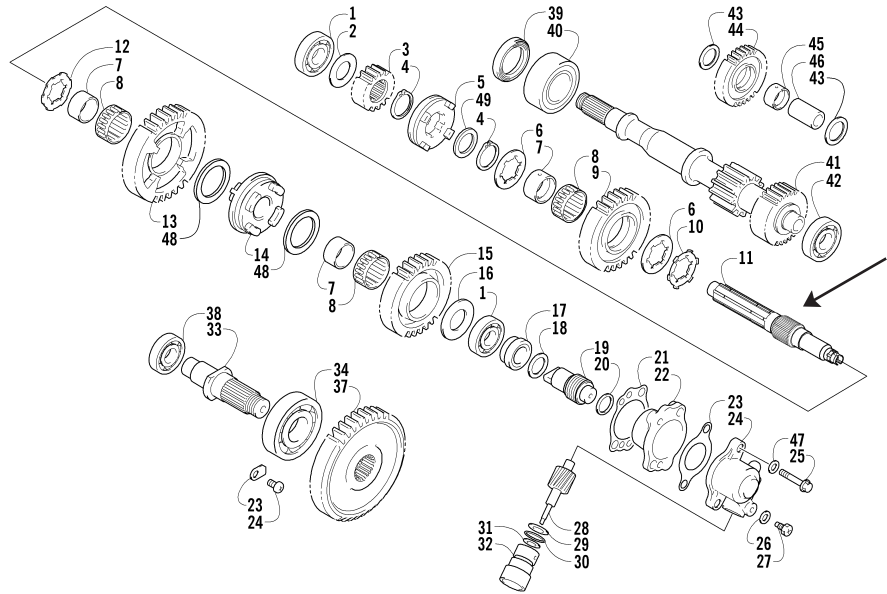
®™ Trademarks of Arctic Cat Inc., Thief River Falls, MN 56701



0303

Secondary Transmission Assembly w/Countershaft (p/n 3402-820)

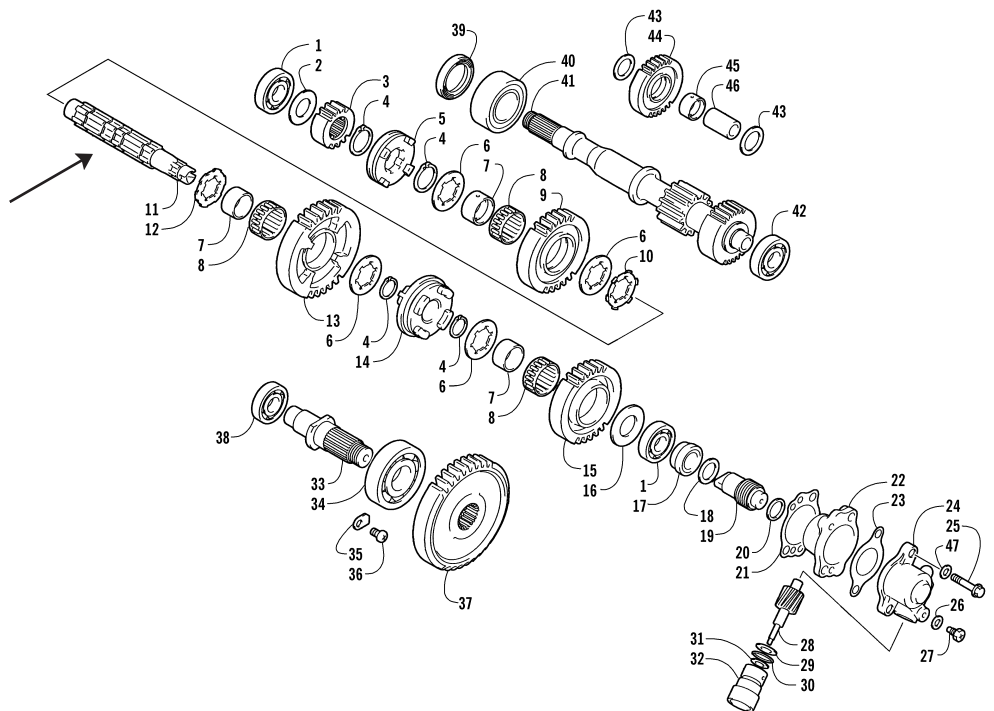
- | | | | |
|----|-----------------|---|----------------------------------|
| 1 | 3402-045 | 2 | Bearing, Shaft |
| 2 | 3423-411 | 1 | Washer, Drive Gear No. 2 - Right |
| 3 | 3402-497 | 1 | Gear, Drive - No. 2 |
| 4 | 3423-066 | 2 | Circlip |
| 5 | <u>3402-821</u> | 1 | Dog, Reverse Driven Gear |
| 6 | 3423-263 | 2 | Washer |
| 7 | 3402-494 | 3 | Bushing |
| 8 | 3402-498 | 3 | Bearing |
| 9 | 3402-822 | 1 | Gear, Reverse Driven |
| 10 | 3423-266 | 1 | Washer, Lock |
| 11 | <u>3402-820</u> | 1 | Countershaft |
| 12 | 3423-262 | 1 | Washer, Lock |
| 13 | 3402-668 | 1 | Gear, Driven - Low |
| 14 | <u>3402-824</u> | 1 | Dog, Sliding |
| 15 | 3402-733 | 1 | Gear, Driven - High |
| 16 | 3423-412 | 1 | Washer, Drive Gear - Left |
| 17 | 3446-114 | 1 | Spacer, Driven Gear |
| 18 | 3423-146 | 1 | Washer, Drive Gear - Center |
| 19 | 3402-508 | 1 | Gear, Speedometer Drive |
| 20 | 3423-145 | 1 | Washer, Drive Gear - Right |
| 21 | 3446-289 | 1 | Gasket |
| 22 | 3446-288 | 1 | Joint, Speedometer Gear |
| 23 | 3446-244 | 1 | Gasket |
| 24 | 3446-057 | 1 | Housing, Speedometer Gear |
| 25 | 3423-307 | 2 | Bolt, Housing |
| 26 | 3402-009 | 1 | Washer, Driven Gear |
| 27 | 3423-143 | 1 | Screw, Driven Gear |
| 28 | 3402-509 | 1 | Gear, Speedometer Driven |
| 29 | 3423-144 | 1 | Washer, Driven Gear |
| 30 | 3423-056 | 1 | O-Ring |
| 31 | 3402-077 | 1 | Seal, Driven Gear |
| 32 | 3446-058 | 1 | Sleeve |
| 33 | 3402-491 | 1 | Shaft, Output |
| 34 | 3402-502 | 1 | Bearing, Output Shaft |
| 35 | 3446-031 | 2 | Retainer, Bearing |
| 36 | 3423-435 | 2 | Screw, Bearing Retainer |
| 37 | 3402-534 | 1 | Gear, Driven - No. 2 |
| 38 | <u>3402-735</u> | 1 | Bearing, Shaft |
| 39 | 3402-537 | 1 | Seal, Driveshaft - Left |
| 40 | 3402-499 | 1 | Bearing, Driveshaft - Right |
| 41 | <u>3402-731</u> | 1 | Driveshaft |
| 42 | 3003-261 | 1 | Bearing, Driveshaft - Left |
| 43 | 3402-195 | 2 | Washer, Reverse Idle Gear |
| 44 | 3402-503 | 1 | Gear, Reverse Idle |
| 45 | 3446-103 | 1 | Bushing, Reverse Idle Gear |
| 46 | 3402-507 | 1 | Shaft, Reverse Idle |
| 47 | 3003-290 | 2 | Gasket |
| 48 | <u>3423-554</u> | 2 | Washer, Driven Gear |
| 49 | <u>3402-825</u> | 1 | Spacer, Reverse Driven Gear |



0738-592

Secondary Transmission Assembly w/Countershaft (p/n 3402-732)

- | | | | |
|----|-----------------|---|----------------------------------|
| 1 | 3402-045 | 2 | Bearing, Shaft |
| 2 | 3423-411 | 1 | Washer, Drive Gear No. 2 - Right |
| 3 | 3402-497 | 1 | Gear, Drive - No. 2 |
| 4 | 3423-066 | 4 | Circlip |
| 5 | <u>3402-737</u> | 1 | Dog, Reverse Driven Gear |
| 6 | 3423-263 | 4 | Washer |
| 7 | 3402-494 | 3 | Bushing |
| 8 | 3402-498 | 3 | Bearing |
| 9 | <u>3402-736</u> | 1 | Gear, Reverse Driven |
| 10 | 3423-266 | 1 | Washer, Lock |
| 11 | <u>3402-732</u> | 1 | Countershaft |
| 12 | 3423-262 | 1 | Washer, Lock |
| 13 | 3402-668 | 1 | Gear, Driven - Low |
| 14 | <u>3402-734</u> | 1 | Dog, Sliding |
| 15 | 3402-733 | 1 | Gear, Driven - High |
| 16 | 3423-412 | 1 | Washer, Drive Gear - Left |
| 17 | 3446-114 | 1 | Spacer, Driven Gear |
| 18 | 3423-146 | 1 | Washer, Drive Gear - Center |
| 19 | 3402-508 | 1 | Gear, Speedometer Drive |
| 20 | 3423-145 | 1 | Washer, Drive Gear - Right |
| 21 | 3446-289 | 1 | Gasket |
| 22 | 3446-288 | 1 | Joint, Speedometer Gear |
| 23 | 3446-244 | 1 | Gasket |
| 24 | 3446-057 | 1 | Housing, Speedometer Gear |
| 25 | 3423-307 | 2 | Bolt, Housing |
| 26 | 3402-009 | 1 | Washer, Driven Gear |
| 27 | 3423-143 | 1 | Screw, Driven Gear |
| 28 | 3402-509 | 1 | Gear, Speedometer Driven |
| 29 | 3423-144 | 1 | Washer, Driven Gear |
| 30 | 3423-056 | 1 | O-Ring |
| 31 | 3402-077 | 1 | Seal, Driven Gear |
| 32 | 3446-058 | 1 | Sleeve |
| 33 | 3402-491 | 1 | Shaft, Output |
| 34 | 3402-502 | 1 | Bearing, Output Shaft |
| 35 | 3446-031 | 2 | Retainer, Bearing |
| 36 | 3423-435 | 2 | Screw, Bearing Retainer |
| 37 | 3402-534 | 1 | Gear, Driven - No. 2 |
| 38 | <u>3402-735</u> | 1 | Bearing, Shaft |
| 39 | 3402-537 | 1 | Seal, Driveshaft - Left |
| 40 | 3402-499 | 1 | Bearing, Driveshaft - Right |
| 41 | <u>3402-731</u> | 1 | Driveshaft |
| 42 | 3003-261 | 1 | Bearing, Driveshaft - Left |
| 43 | 3402-195 | 2 | Washer, Reverse Idle Gear |
| 44 | 3402-503 | 1 | Gear, Reverse Idle |
| 45 | 3446-103 | 1 | Bushing, Reverse Idle Gear |
| 46 | 3402-507 | 1 | Shaft, Reverse Idle |
| 47 | 3003-290 | 2 | Gasket |



0737-772