



Service Kit 753-06213

Date: July 23, 2009

Subject: 787-01224 Front Deck Baffle Service Replacement

Models Affected: N/A

Read through and understand these instructions completely before proceeding with repair.

PURPOSE: This kit contains the replacement front service baffle 787-01346 for the 787-01224 baffle which is no longer available. Additional mounting hardware and baffle rework and installation instructions are included.

NOTE: *These materials are prepared for use by trained technicians who are experienced in the service and repair of equipment of the kind described in this publication, and are not intended for use by untrained or inexperienced individuals. Such individuals should seek the assistance of an authorized service technician or dealer.*

NOTE: *Save this Instruction Sheet. Refer to it when ordering replacement parts.*

Service Kit Contents

(See Figure 1)

ITEM NO.	PART NUMBER	QTY	DESCRIPTION
1	787-01346	1	BAFFLE: DECK: FRONT
2	710-3013	1	SCREW: HEXHD: 1/4"-20 x .50: GR5
3	712-04064	1	NUT: FLANGE LOCK: 1/4"-20: GRF: NYLON
4	736-0463	1	WASHER: FLAT: .25 x .63 x .051
5	*	1	THIS INSTRUCTION SHEET

* - Not Available Separately

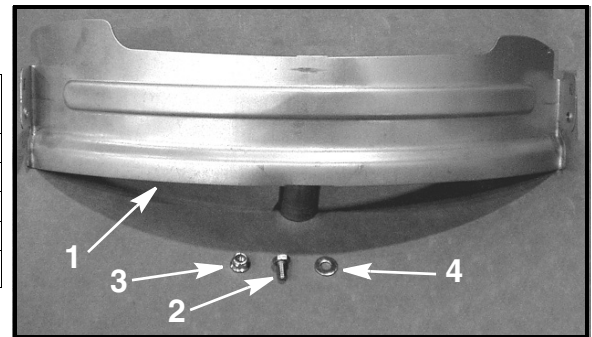


FIGURE 1

NOTE: *Left (LH) and right (RH) sides are determined from the operator's position behind the handle bar and facing forward towards the engine.*

Pre-Service Preparation:

1. Place mower on a flat and level surface, turn off engine and allow muffler and engine to cool before proceeding.
2. Remove spark plug wire from the spark plug and ground to the engine block.
3. Drain the fuel tank.
4. Ensure that the oil dipstick cap is tight.
5. Position the height adjuster so that the front wheels allow access to the front deck baffle screws. See Figure 2.

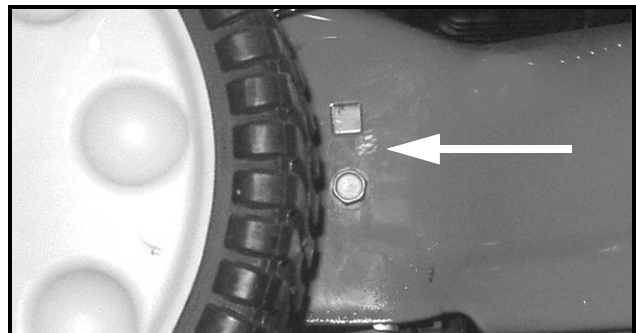


FIGURE 2

6. Block the back wheels on the back side to keep the mower from rolling back in the next step.

7. Raise the front end of the mower and set wood blocking under the front deck edge so that the front wheels are off the ground at least four (4) inches.

Baffle Removal:

8. Using a 3/8" socket and ratchet, remove the 1/4"-20 self-tapping screws securing the front deck baffle to the deck. One screw on each side.

9. Using a large flat blade screw driver, push in on the locking tabs on each side while pulling down on the baffle. This will move the tabs out and away of the square holes in the deck. Discard the baffle. See Figure 3.

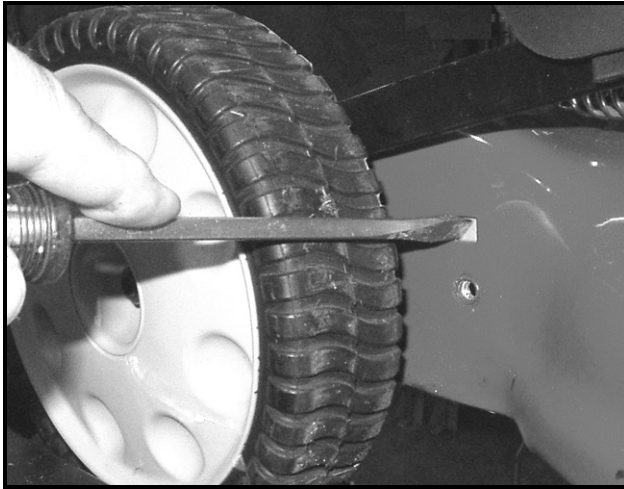


FIGURE 3

New Baffle Rework:

10. Set the new Baffle, Item 1, in front of the deck as shown in Figure 4.



FIGURE 4

11. Compare the hole pattern on the new baffle with the hole pattern in the deck. Do this for the left (LH) side and right (RH) side of the deck.

12. Normally on the right (RH) side, the hole pattern in the deck matches the hole pattern of the new baffle.

13. With a black marker, mark the side of the new baffle that **DOES NOT** match the hole pattern on its' side of the deck, normally the left (LH) side. See Figure 5.

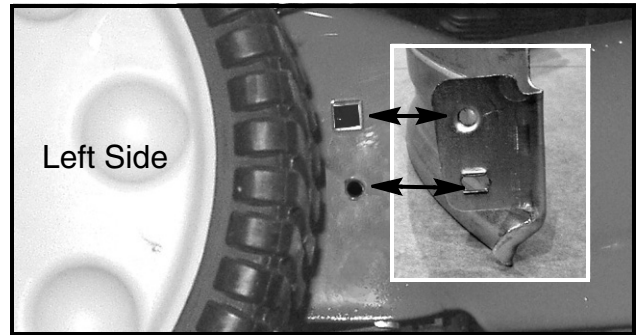


FIGURE 5

14. Using a medium coarse file or bench grinder, remove the two small projecting tabs at the square hole on the side marked in Step 13. See Figure 6.

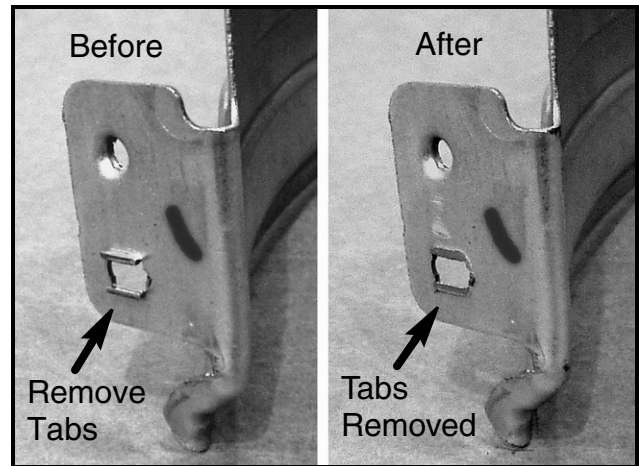


FIGURE 6

New Baffle Installation:

15. Install the right (RH) side of the new baffle into the deck aligning the tabs on the baffle with the square hole in the deck. Using one of the self tapping screws removed in Step 8, secure the baffle on the right side.

16. While slightly bowing the baffle, slide the left side of the baffle up into the deck until the baffle holes are aligned with the deck holes.

17. Using a 1/4" drill bit and portable drill motor, open the bottom hole in the left (LH) side of the deck and through the rectangular hole in the baffle.

18. For the lower (round) deck hole, use the 1/4"-20 x .50 Screw, Item 2, and the 1/4"-20 Flange Lock Nut, Item 3, to secure the baffle to the deck. The nut goes on the inside of the deck.

19. For the upper (square) deck hole, use the remaining self tapping screw removed in Step 8, and the Flat Washer, Item 4, to secure the baffle to the deck. The flat washer goes next to the head of the self tapping screw.

20. Remove blocking, add fresh fuel to the fuel tank and reconnect the spark plug wire.

This completes the installation of the new baffle.