



Service Kit 753-06035

Date: 9/30/2008

Subject: Service Replacement for the
683-04129 Variable Speed Pulley
Bracket

Models N/A
Affected:

Read through and understand these instructions completely before proceeding with repair.

PURPOSE: This kit provides the parts and installation instructions for the service replacement of the 683-04129 variable speed pulley bracket which is no longer available.

NOTE: *These materials are prepared for use by trained technicians who are experienced in the service and repair of equipment of the kind described in this publication, and are not intended for use by untrained or inexperienced individuals. Such individuals should seek the assistance of an authorized service technician or dealer.*

NOTE: *Save this Instruction Sheet. Refer to it when ordering replacement parts.*

Service Kit Contents

(See Figure 1)

ITEM NO.	PART NUMBER	QTY	DESCRIPTION
1	683-04296	1	BRACKET: PULLEY: SPEED: VARIABLE
2	710-04598	3	HHCS: M8 X 1.25 X 20mm: SELF TAPPING
3	710-0627	2	HHCS: 5/16"-24 x .750: GR5: LOCK
4	*	1	THIS INSTRUCTION SHEET

* - Not Available Separately

NOTE: *Reference to right (RH) and left (LH) sides is from the operator's position in the seat facing forward.*

NOTE: *Refer to the Operator's Manual illustrated parts list for part nomenclature and location.*

Pre-service Preparation:

- Place the tractor on a firm and level surface, turn the engine off, remove the ignition key and set the parking brake ON.
- Block the front tires to keep the tractor from rolling forward or backward.
- Jack up the rear end of the tractor to get the tires off the ground. Set the left and right rear corners of the frame securely onto jack stands
- Using a 1/2" socket and ratchet, remove the left rear wheel assembly from the transmission axle. Retain the bell washer. Discard the lock screw.

Installation Instructions:

- Remove the transmission drive belts from the variable speed pulley assembly.

NOTE: *Refer to the Operator's Manual for belt removal / replacement instructions*

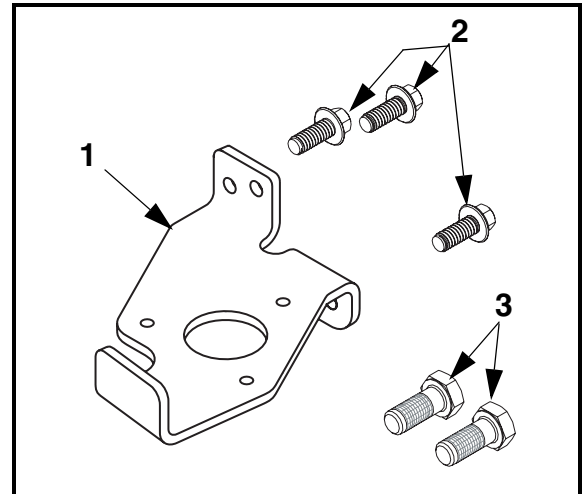


FIGURE 1

- Using a 1/2" socket and ratchet, remove the two screws that retain the existing variable speed pulley w/ bracket assembly to the frame.

- Using a 1/2" socket and ratchet, remove the lock screw and flat washer securing the variable speed pulley to the variable speed pulley/bracket/bearing assembly. Discard the lock screw only.

- Using a 3/8" socket and ratchet, remove the three (3) self-tapping screws securing the bearing cup and bearings to the variable speed bracket.

- Re-assemble the bearing cup (w/ bearings) to the new Variable Speed Pulley Bracket, Item 1, with the hardware removed in Step 8.

- Re-assemble the variable speed pulley onto the subassembly from Step 9 using a new Lock Screw, Item 3, and the flat washer removed in Step 7. **Torque the screw to 175-200 In-Lbs.** Set the assembly aside.

11. Cut out along the dotted line the template at the bottom of this page.

12. Align the two "Alignment Holes" on the template over the two existing holes in the frame from which the old variable speed bracket was mounted. Tape the template in place.

13. Using a center punch and hammer, locate the position of the two new holes on the frame by center punching a mark at the cross hair centers of the two holes indicated on the template.

14. Using a 1/8" sharp drill bit and a electric drill motor, drill a pilot hole through the frame at each center punch mark.

15. Using a sharp "S" letter drill bit (Optional 11/32" drill bit), open the pilot holes to their final size of .355"/.345" diameter.

16. Using a metal file, remove any metal burrs from around the holes on the inside of the frame.

17. From inside the frame, align the new Variable Speed Pulley/Bracket/Bearing Assembly from Step 10 over the three holes.

18. Using a 10mm socket and ratchet, fasten the new Variable Speed Bracket Assembly to the frame using the three (3) Metric Self-Tapping Screws, Item 2, Tighten securely.

19. Re-install both transmission drive belts, removed in Step 5, onto the variable speed pulley assembly.

20. Lubricate the end 5" of the axle with anti-seize before re-installing the wheel assembly. Re-install the rear wheel removed in Step 4 using the new patch Lock Screw, Item 3.

21. Test drive the tractor to ensure proper drive operation.

This completes the installation of this service kit.

683-04296 Variable Speed Pulley Bracket Mounting Template

Before removing the template, check template size by ensuring that the template meets the dimensions shown. If the template does not match both dimensions, locate a copier that has the capability of resizing copies. Both dimensions must be met to match new bracket holes.

