



Service Kit 753-06260

Date: December 08, 2009

Subject: Service Replacement for 683-04079
Lift Shaft Assembly

Models Affected: N/A

Read and understand these instructions thoroughly before proceeding with repair.

PURPOSE: This service kit provides the parts, removal and installation instructions for the replacement of the 683-04079 Lift Shaft Assembly which is no longer available.

NOTE: *These materials are prepared for use by trained technicians who are experienced in the service and repair of equipment of the kind described in this publication, and are not intended for use by untrained or inexperienced individuals. Such individuals should seek the assistance of an authorized service technician or dealer.*

NOTE: *Save this Instruction Sheet. Refer to it when ordering replacement parts.*

Service Kit Contents

(See Figure 1)

| ITEM NO. | PART NUMBER | QTY | DESCRIPTION |
|----------|----------------|-----|------------------------|
| 1 | 683-04223-0637 | 1 | SHAFT ASSEMBLY:LIFT |
| 2 | 747-04447 | 1 | HANDLE: LIFT |
| | * | 1 | THIS INSTRUCTION SHEET |

* - Not Available Separately

NOTE: *Left (LH) and right (RH) sides are determined from the operator's position and facing in the forward direction.*

Pre-Service Preparation:

- Place tractor on a flat and level surface, turn off the engine, remove the ignition key and set the parking brake "ON".
 - Allow engine and muffler to cool before proceeding.
 - Block the front tires to keep the unit from rolling forward.
 - Raise the rear of the tractor until the rear tires are off the ground. Support the rear of the tractor with a pair of jack stands, one on each rear corner of the frame.
 - Remove the rear tires.
- NOTE:** *The lift shaft removal can be accomplished without the tires being removed. However, removing the tires facilitates easy access to the "E"-ring clips and lift shaft/lift handle removal and installation.*
- Place wood blocking under the back edge of the cutting deck by each deck wheel, so that when the deck is lowered onto the blocking, to its' lowest cutting position, the lift cables will have slack.
 - Raise the seat to expose the battery.
 - Disconnect the NEGATIVE (Black) battery cable from its' terminal first, followed by the POSITIVE (Red) battery cable.
 - Remove the battery and battery tray.
 - Remove the rubber grip from the deck lift handle.

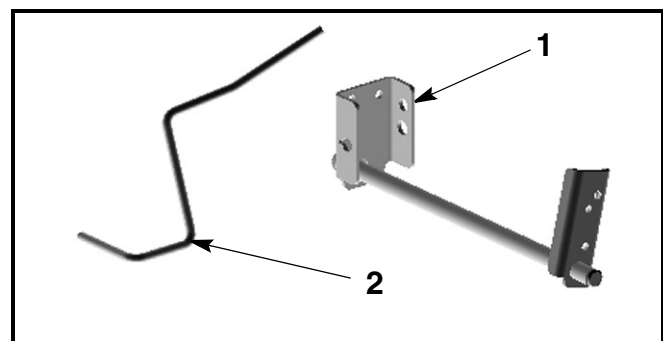


FIGURE 1

Lift Shaft Assembly Removal:

- Place the deck lift handle in the highest cutting position.
- At the lift shaft assembly (from now on to be referred to as "lift shaft" only), remove and retain the hairpin clips from the clevis pins securing lift cables to the lift shaft brackets. See Figure 2.

NOTE: *Mark the hole that the lift cables are attached to on the lift shaft for later re-assembly.*

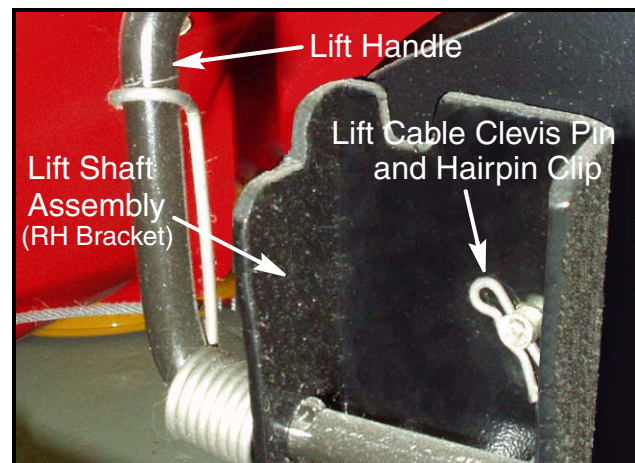


FIGURE 2

13. Unhook the long arm of the lift handle's torsion spring from the lift handle. See Figure 3.

NOTE: It is not necessary to unhook the torsion spring from the lift handle to remove the lift shaft/lift handle subassembly from inside the frame. Unhooking the torsion spring simplifies removal.

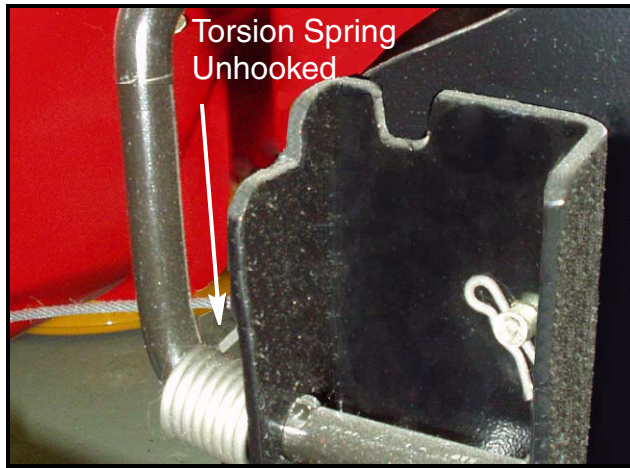


FIGURE 3

14. Place the deck lift handle into the lowest cutting position.

15. Slip the RH lift cable's clevis pin from the lift shaft and secure the lift cable away from the lift shaft.

16. Using a flat blade screw driver, carefully remove and retain the "E" ring clip from each end of the lift shaft assembly. See Figure 4.

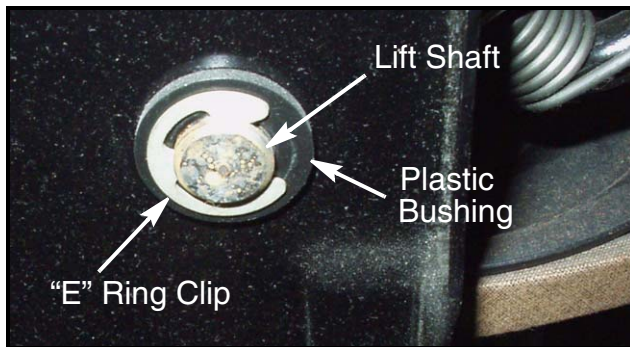


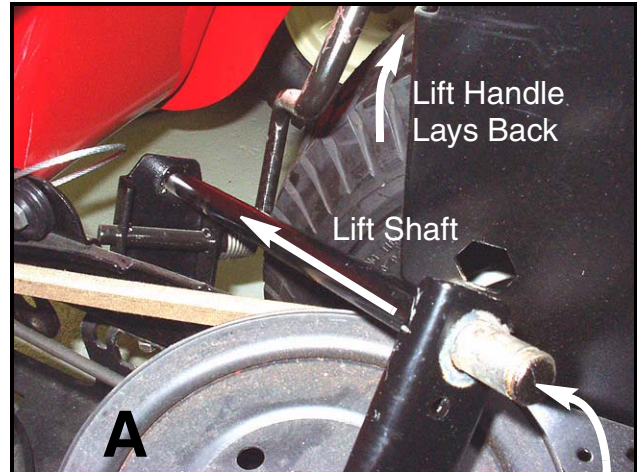
FIGURE 4

17. Remove and retain the bushing from the frame's RH and LH sides. Note that the bushings are installed with the bushing flange on the outside of the frame.

18. Pull the lift shaft away from the LH frame until the lift cable can be removed from the lift shaft assembly LH bracket.

19. Carefully work the lift shaft/handle subassembly down and out through opening between frame and fender on the RH side of the frame as shown in Figure 5.

20. Remove and retain the torsion spring from the handle. Discard the old lift shaft and lift handle.



View Through Battery Well



View from Ground in Front of RH Rear Tire

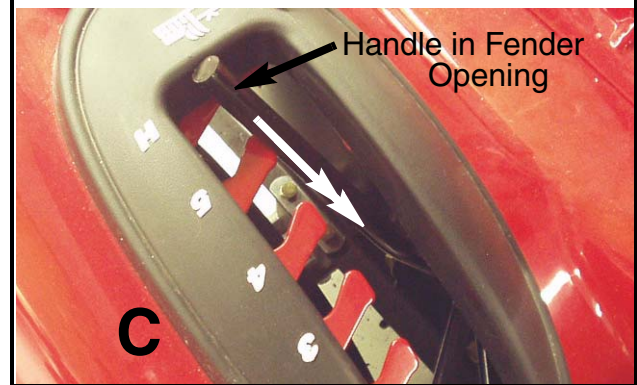


FIGURE 5

Proceed to "**Lift Shaft Assembly Installation**" on page 3.

Lift Shaft Assembly Installation:

21. Insert the new lift handle into the keyed hole in the new Lift Shaft Assembly (Item 1) until the "A" tab is against the inside of the "U" bracket. See Figure 6.

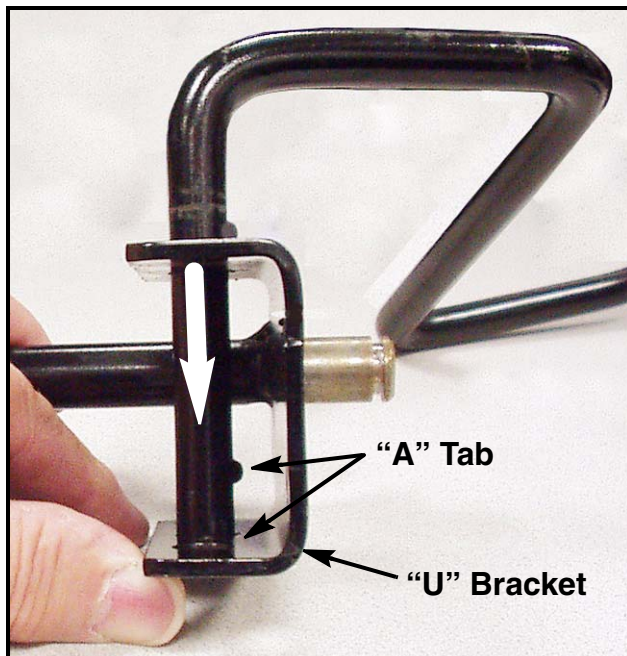


FIGURE 6

22. Assemble the torsion spring onto the Lift Handle (Item 2). Hook the short leg of the spring onto the "U" bracket. See Figure 7.



FIGURE 7

23. Install the new lift shaft/handle/spring subassembly into the frame in the reverse order of **Lift Shaft Assembly Removal**.

24. Clean and grease each axle before reinstalling the rear wheels.

This completes the installation of the new Lift Shaft.