



Service Kit 753-06151

Date: September 17, 2009

Subject: Service Replacement for the 2-Way and 4-Way Trigger Control Housing

Models Affected: 2009 Model Year and later 2-Stage Snow Throwers with Handle Panel Remote Chute Rotation Control.

Read through and understand these instructions completely before proceeding with repair.

PURPOSE: This service kit provides the plastic joystick housing halves, trigger, plunger and hardware for 2009 Model Year and later 2-Stage Snow Throwers with Handle Panel Remote Chute Rotation Control.

NOTE: These materials are prepared for use by trained technicians who are experienced in the service and repair of equipment of the kind described in this publication, and are not intended for use by untrained or inexperienced individuals. Such individuals should seek the assistance of an authorized service technician or dealer.

NOTE: Save this Instruction Sheet. Refer to it when ordering replacement parts.

Service Kit Contents

(See Figure 1)

ITEM NO.	PART NUMBER	QTY	DESCRIPTION
1	*	1	HOUSING ASSEMBLY: TRIGGER: RH
2	710-04353	1	SCREW: #8 x 1.00": PLASTITE
3	710-04879	2	SCREW: MACHINE: #8-32 x .750: PANPHI
4	731-04893A	1	PLUNGER: JOYSTICK
5	*	1	HOUSING: CONTROL: TRIGGER: LH
6	731-07031	1	LEVER: TRIGGER: JOYSTICK
7	937-04085	1	GREASE: LITHIUM: WHITE: 1 OZ.
8	*	1	THIS INSTRUCTION SHEET

* - Not Available Separately

NOTE: Right (RH) and left (LH) sides are determined from the operator's position at the handle bars facing the auger housing.

Pre-Service Preparation:

- Place snow thrower on a flat and level surface, turn off engine and allow muffler and engine to cool before proceeding.
- Remove spark plug wire from the spark plug and ground to the engine block.
- Position the 2-Way or 4-Way Chute Control Lever as far back towards the operator's position as possible.

Disassembly of the Trigger Control:

- Using a No. 2 Phillips screw driver, remove the two machine screws securing the control housing to the joystick control shaft. Slip the trigger handle assembly off of the joystick control shaft.

NOTE: The two nuts **do not** come out of the RH housing assembly.

- Using a No. 2 Phillips screw driver, remove the Plastite screw securing the two housing halves together. Separate the two housing halves. See Figure 2.

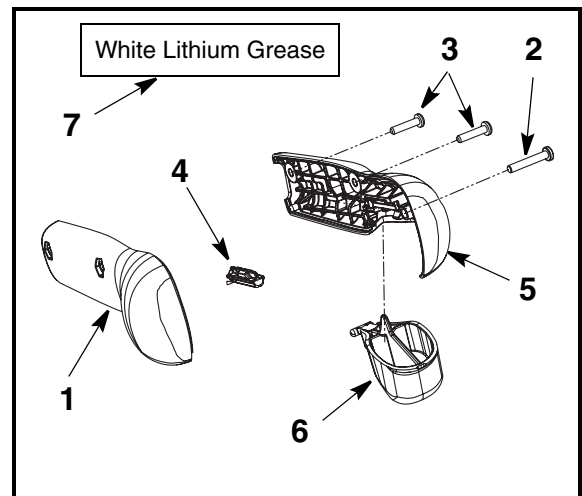


FIGURE 1

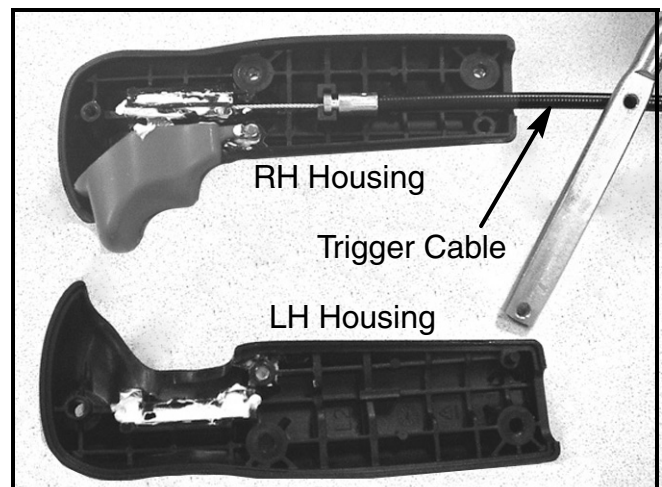


FIGURE 2

Refer to Figure 3 for Steps 6 through 8.

6. Remove, and discard the trigger from the housing half.
7. Slip the trigger cable, with plastic plunger attached, out of the trigger cable socket in the RH housing. Discard the two housing halves.
8. Carefully, so not to kink the trigger cable, remove the ball end of the cable out of the plastic plunger. Discard the plunger.

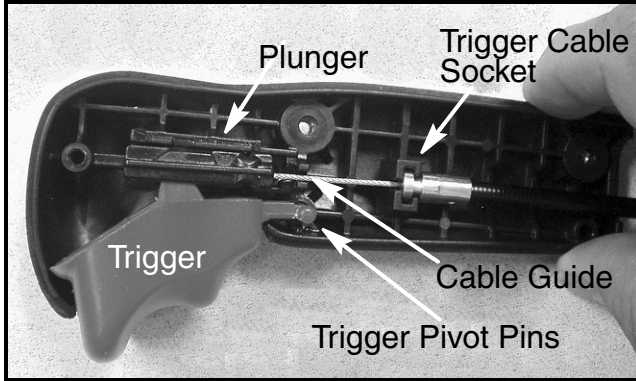


FIGURE 3

New Trigger Housing Assembly & Installation:

9. With the new Plunger, Item 4, place the ball end of the trigger cable into the round ball socket in the new plunger. See Figure 4.

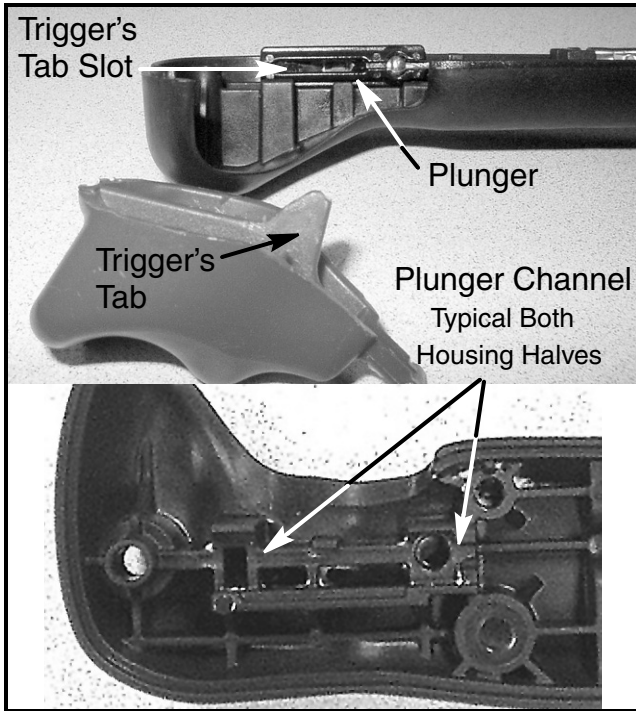


FIGURE 4

10. Apply a liberal amount of White Lithium Grease, Item 7, to the plunger, the plunger's trigger tab slot, the plunger channels in new RH Housing, Item 1, and new LH Housing, Item 5, the trigger pivot sockets in both housing halves and the new Trigger's, Item 6, tab. See Figures 2 and 4.

11. Install the trigger cable with plunger into the RH housing as shown in Figure 5.

12. In the RH housing, install the trigger lever into the trigger tab slot in the plunger (A), the trigger lever's pivot pin into the trigger pivot pin boss (B) and the cable in the cable guide (C).

NOTE: Ensure that the cable's end fitting is securely in the RH housing retainer socket. See Figure 5, Item D.

NOTE: Check the subassembly against Figure 5 before proceeding to the next step. (Subassembly is shown without grease for clarity)

13. Carefully place the LH housing onto the RH housing subassembly making sure that the plunger sets into the LH housing's plunger channel and the trigger's pivot pin is in its' LH housing boss.

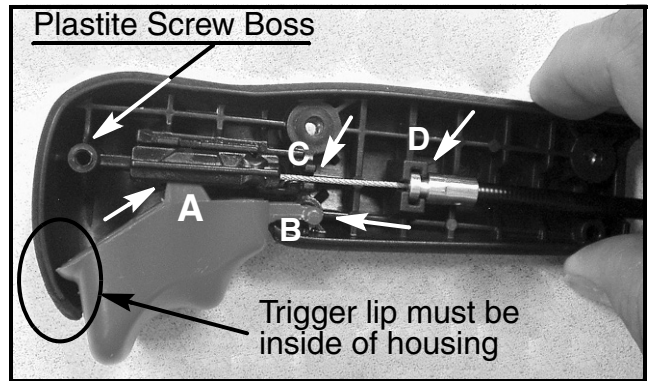


FIGURE 5

14. Using the #8 Plastite Screw, Item 2, secure the LH and RH housings together. See Figure 6.



FIGURE 6

15. Slide the trigger housing assembly onto the joystick control shaft's end aligning the holes in the trigger housing assembly with the holes in the shaft.

16. Using the two new #8 Machine Screws, Item 3, secure the trigger housing assembly to the shaft.

17. Test the operation of the chute rotation trigger lock. Squeezing the trigger must unlock the chute and allow free side to side rotation. When the trigger is released the chute rotation is locked and the chute should not rotate.

This completes the installation of the new trigger control housings.