



Service Kit 753-06127

Date: 2/20/2009

Subject: Service Replacement Elbow Chute Assembly for the 33 Inch Wide Cut Walk Behind Mower Grass Bag

Models Affected: N/A

Read through and understand these instructions completely before proceeding with repair.

PURPOSE: This service kit provides the elbow chute assembly, optional mounting hardware, and installation instructions to install the new chute on either earlier or later production 33 Inch Wide Cut Walk Behind Mowers.

NOTE: These materials are prepared for use by trained technicians who are experienced in the service and repair of equipment of the kind described in this publication, and are not intended for use by untrained or inexperienced individuals. Such individuals should seek the assistance of an authorized service technician or dealer.

NOTE: Save this Instruction Sheet. Refer to it when ordering replacement parts.

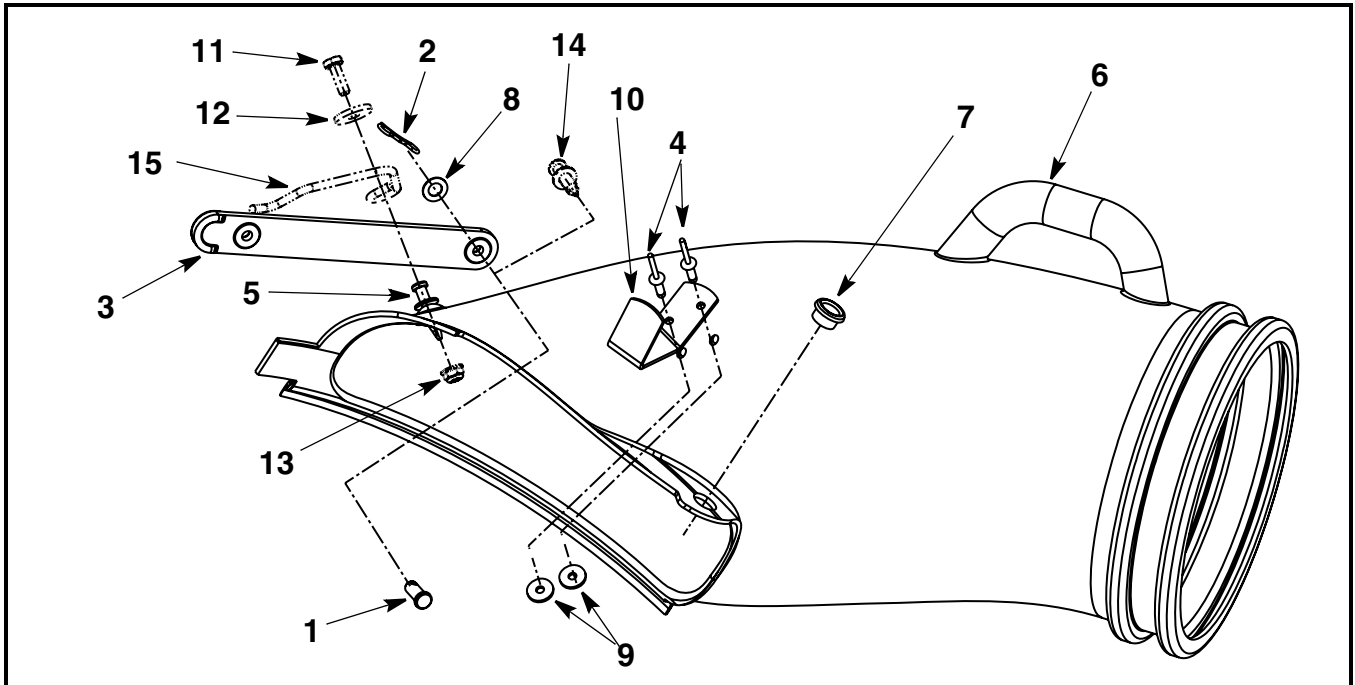


FIGURE 1

Service Kit Contents (See Figure 1)

* - Not Available Separately

Parts marked with a "+" sign are located in the enclosed hardware package. All other parts are pre-assembled onto the elbow chute.

ITEM NO.	PART NUMBER	QTY	DESCRIPTION
1	711-05063	1	PIN: CLEVIS: 5/16" x 3/4"
2	714-04040	1	PIN: COTTER: BOW-TIE 72
3	723-04008A	1	STRAP: CHUTE: 6.00" LONG
4	728-04021	2	RIVET: POP: .187 DIA.
5	728-04042	1	RIVET: PLASTIC: .250
6	*	1	CHUTE: ELBOW: 33" GRASS BAG
7	731-1706	1	BUSHING: ROD: CONTROL
8	736-0204	1	WASHER: FLAT: .344 x .62 x .033
9	736-0400	2	WASHER: FLAT: .194 x .62 x .063
10	787-01533	1	BRACKET: BAG: 33" CHUTE HOLDER
11	710-3015 +	1	SCREW: HEX HD: 1/4"-20 x .75: GR5: STD
12	736-0176 +	1	WASHER: FLAT: .265 x .938 x .120
13	712-04064 +	1	NUT: FLANGELOCK: 1/4"-20: GRF: NYLON
14	728-0199 +	1	RIVET: PLASTIC: .3125 DIA.
15	747-04670 +	1	LATCH: GRASS BAG
16	*	1	THIS INSTRUCTION SHEET

Configurations:

1. The Elbow Chute comes pre-assembled in the configuration required for 2009 Model Year production 33" Wide Cut Mower cutting decks. See Figure 1 for forward deck fitting for securing the elbow chute.

If your deck attach bracket looks like that in Figure 1, the elbow chute is already correctly configured. Stop here.

If your deck attach bracket looks like that in Figure 2, the elbow chute assembly needs to be reworked. Proceed to Step 2.

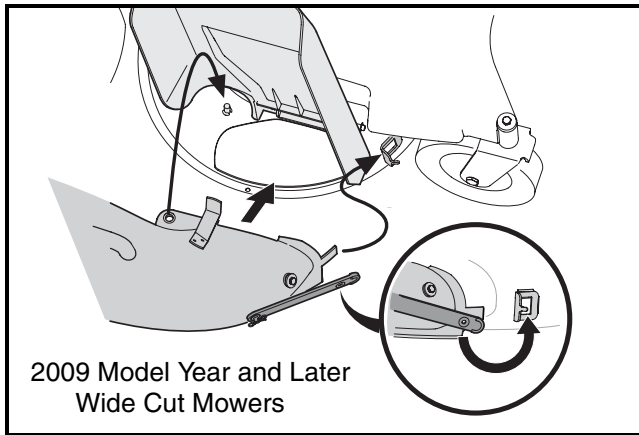


FIGURE 1

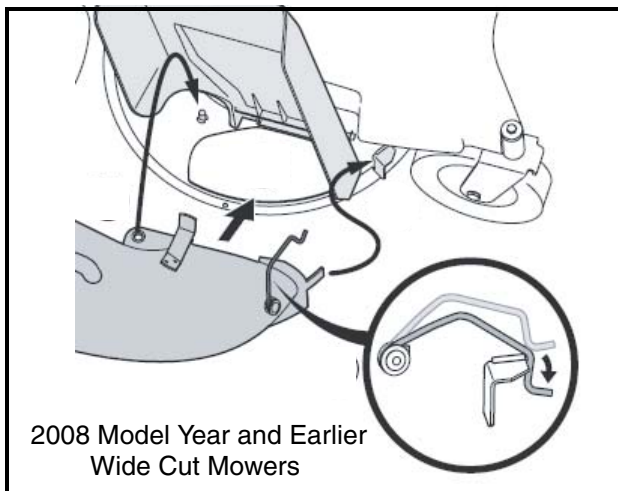


FIGURE 2

2. The parts marked with a “+” sign are required for 2008 Model Year and earlier 33" Wide Cut Mower cutting decks. These parts are located in a separate hardware pack within the elbow chute accessory carton. See Figure 2. Proceed to Step 3.

Reconfigure Instructions:

Refer to Figure 1 for the following steps.

3. Remove the Bow-tie Cotter Pin, Item 2, from the Clevis Pin, Item 1. Remove the clevis pin, Flat Washer, Item 8, and Chute Strap, Item 3.

4. Locate the .3125 Plastic Rivet, Item 14, from the hardware pack in the elbow chute accessory carton.

NOTE: *The reusable plastic rivet has a center pin that must be in the out position before the rivet can be inserted or removed. See Figure 3.*

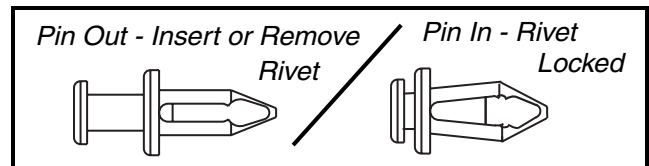


FIGURE 3

5. With the pin in the out position, insert the rivet into the hole in the chute where the clevis pin was removed from. Press the pin in as far as it will go.

6. Pull the pin out on the Plastic Rivet, Item 5. Remove and discard the rivet.

7. Locate the Grass Bag Latch (Item 15), the Flat Washer (Item 12), the 1/4"-20 Screw (Item 11), and the 1/4"-20 Flangelock Nut (Item 13).

8. Assemble the grass bag latch and mounting hardware onto the chute at the hole from which the plastic rivet was removed in Step 6. Refer to Figure 1.

9. Using a 7/16" socket and ratchet and a 7/16" box wrench, tighten the bolt and nut sufficiently but to allow the grass bag latch to rotate freely.

This completes the reconfiguration of the elbow chute assembly.