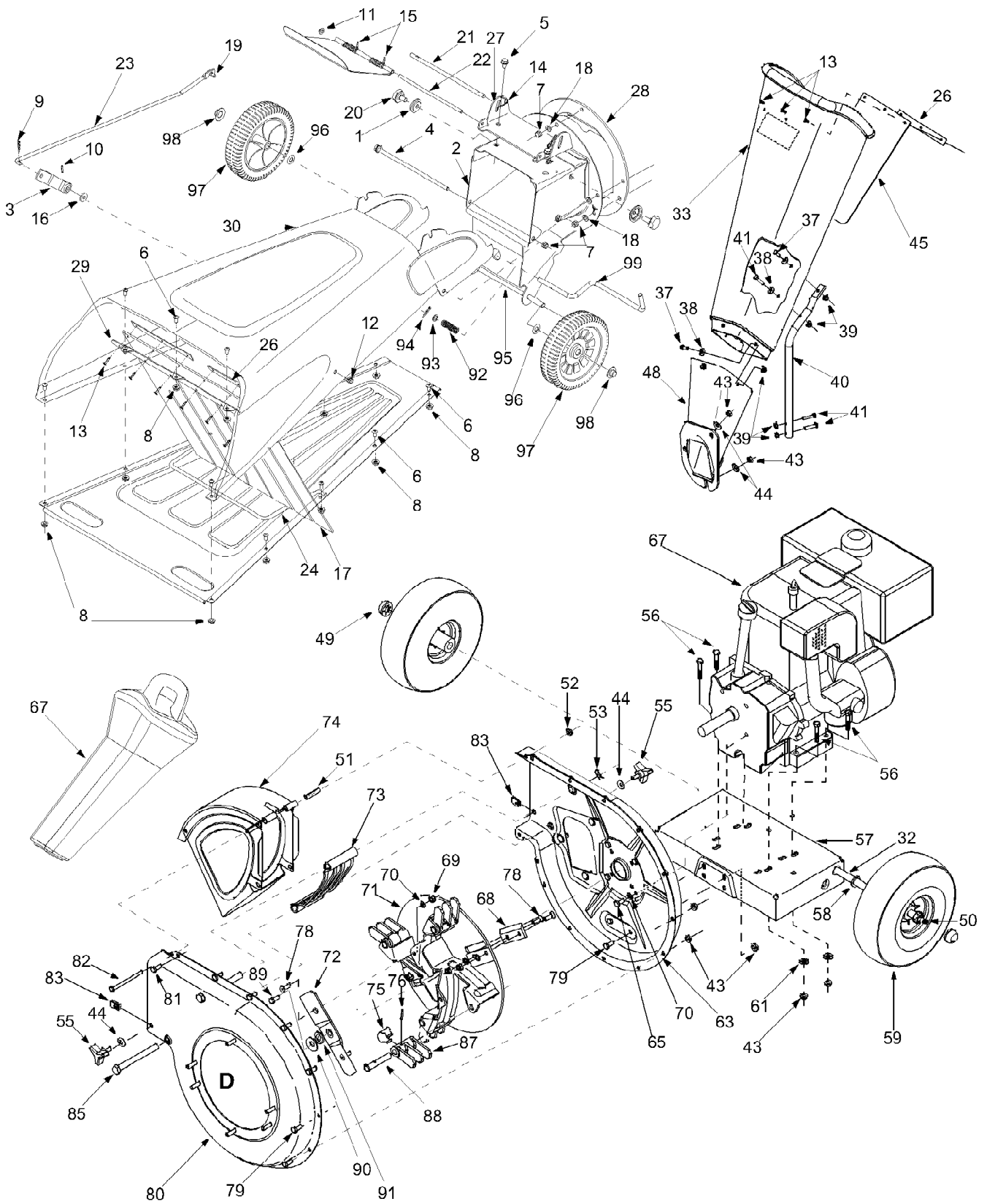


24A-494G063 CS499 Chipper Shredder (2003)  
Flail Assembly



24A-494G063 CS499 Chipper Shredder (2003)  
Flail Assembly

Page 2 of 3

Ref #	Part Number	Qty	S/P/F	Description
1	11480	1		Stop Washer
2	681-0118	1		Inlet Guide Assembly
3	681-0144	1		Arm Bracket Assembly
4	710-0542	1		Hex Flange Bolt: 5/16-18 x 8.375"
5	710-0607	1	/P	Hex Washer Screw: 5/16-18 x 0.5"
6	710-3256	1	/P	Button-Head Screw 1/4-20 x 0.5"
7	712-0429	1	S	Lock Nut: 5/16-18
8	712-3027	1	S	Hex Flange Lock Nut: 1/4-20
9	714-0104	1	S	Internal Cotter Pin
10	715-0129	1		Spiral Pin
11	726-0106	1	S	Cap Nut
12	726-0135	1	/P	Speed Cap Nut
13	728-0175	1		Pop Rivet
14	732-0546	1	S	Torsion Spring
15	732-0629	1	S	Hopper Door Spring
16	735-0127	1	/P	Rubber Washer
17	735-0651	1		Hopper Flap
18	736-0119	1	S	Lock Washer
19	738-0137A	1	S	Shdr. Scr: .340 x .285 x 1/4-20
20	738-0946	1		Shdr. Scr: .56 x .165 x 5/16-18
21	747-0531A	1		Rel. Rod: 5/16" dia.
22	747-0747	1		Hopper Door Rod
23	747-1124	1		Flap Retaining Rod
24	747-1125	1		Flap Retaining Bail
?25	781-0492A	1	/P	Hopper Pivot Door
26	781-0633	1		Chute Flap Strip
27	781-0698	1		Hopper Lock Bracket
28	781-0715	1	S	Shredder Plate
29	781-0752	1		Flap Mounting Bracket
30	781-0754	1		Upper Hopper
?31	781-0755	1	S	Lower Hopper
32	738-0813	1		Shredder Axle
33	731-1899	1		Chipper Chute
37	710-0751	1	/P	Hex Bolt 1/4-20 x .625
38	736-0173	1	/P	Flat Washer .28 I.d. x .74 O.d.
39	712-3027	1	S	Flanged Lock Nut
40	749-1004	1		Chipper Chute Support
41	710-0106	1	/P	Hex Scr. 1/4-20 x .625 (Gr. 2)
43	712-3010	1	S	Hex Nut 5/16-18 Thd. (Gr. 5)
44	736-0242	1	/P	Bell Washer .345" I.d. x .88"
45	735-0249	1	S	Shredder Chute Flap
48	681-0068A	1	/P	Chipper Chute Assembly
49	726-0214	1	/P	Push Cap 5/8" dia.
50	734-0255	1	S	Air Valve
51	750-0793	1	S	Chute Hinge Spacer
52	712-3027	1	S	Hex Ctr. Lock Nut 1/4-20 Thd.
53	714-0149B	1	S	Internal Cotter Pin
55	720-0170	1	/P	Hand Knob
56	710-0805	1	/P	Hex Bolt 5/16-18 x 1.5"
57	781-0510B	1	S	Shredder Frame
58	736-0366	1	/P	Flat Washer 1.12 x .64 x .120
59	634-04009	1	S	Wheel Assembly
61	736-0170	1	S	Special Lock Washer

24A-494G063 CS499 Chipper Shredder (2003)  
Flail Assembly

Page 3 of 3

Ref #	Part Number	Qty	S/P/F	Description
63	681-0117	1		Flail Housing Ass'y. (Inner)
65	710-0157	1	/P	Hex Bolt 5/16-24 x .75" Lg.
67	731-1617	1	/P	Tamper Plug (If Equipped)
68	742-0544	1	S	Chipper Blade
69	712-0411	1	S	Hex Top Lock Nut 5/16-24
70	736-0119	1	S	Lock Washer 5/16" I.d.
71	681-0030	1	S	Impeller assembly
72	742-0571	1	S	Shredder Blade
73	781-0457	1	S	Shredder Screen
74	681-0094	1		Discharge Chute Assembly
75	781-0735	1		Retaining Clip
76	715-0166	1		Spring Roll Pin
78	710-1054	1	/P	Flat Head Scr. 5/16-24 x .75"
79	710-3008	1	/P	Hex Bolt 5/16-18 x .75"
80	681-0004A	1	/P	Flail Housing Ass'y. (Outer)
81		1		UNKNOWN
82	710-0825	1	/P	Hex Bolt 1/4-20 x 3.75"
83	726-0211	1	S	U Nut 5/16-18
85	711-0835	1	S	Clevis Pin
87	719-0329	1		Flail Blade
88	711-0833B	1	S	Clevis Pin
89	710-1254	1	/P	Hex Patch Bolt 3/8-24 x 2.25"
90	736-0217	1	S	Lock Washer 3/8"
91	736-0247	1	/P	Flat Washer .406" I.d. x 1.25"
92	732-0306	1	S	Compression Spring
93	736-0117	1	S	Flat Washer
94	714-0104	1	S	Internal Cotter Pin
95	711-1304	1		Axle Shaft
96	736-0160	1	S	Flat Washer
97	734-1797	1	/P	Complete Wheel: Grey
98	726-0299	1	/P	Push Cap
99	747-0982	1		Lock Rod
?100	OEM-764-0430	1	S	Shredder Bag