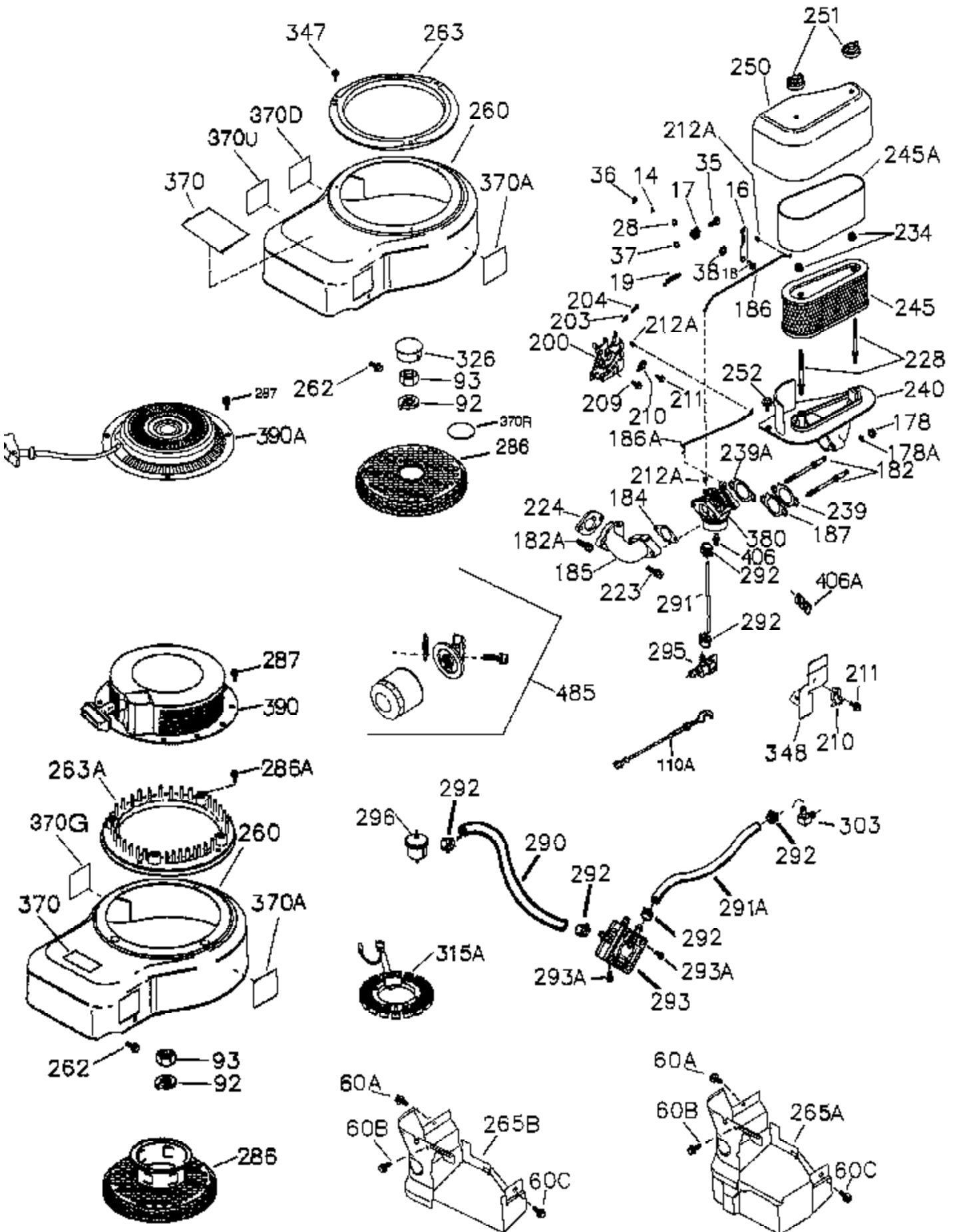




| Ref # | Part Number | Qty | Description                                    |
|-------|-------------|-----|--|
|       | 1 37525A    | 1   | Cylinder (Incl. 2,11B,20,72A,72B & 31 4)       |
|       | 2 27652     | 2   | Dowel Pin                                      |
|       | 11 36302    | 1   | Check Valve                                    |
|       | 11B 650902  | 1   | Screw, 10-32 x 7/16"                           |
|       | 11A 36303   | 1   | Breather Plate                                 |
|       | 15 37754    | 1   | Governor Rod                                   |
|       | 30 36308    | 1   | Crankshaft                                     |
|       | 31 36324A   | 1   | Counterbalance Gear                            |
|       | 38 37109    | 1   | Retaining Ring                                 |
|       | 40 36312    | 1   | Piston, Pin & Ring Set (Std.)                  |
|       | 40 36313    | 1   | Piston, Pin & Ring Set (.010" OS)              |
|       | 40 36314    | 1   | Piston, Pin & Ring Set (.020" OS)              |
|       | 41 36309    | 1   | Piston & Pin Ass'y. (Std.) (Incl. 43)          |
|       | 41 36310    | 1   | Piston & Pin Ass'y. (.010" OS) (Incl. 43)      |
|       | 41 36311    | 1   | Piston & Pin Ass'y. (.020" OS) (Incl. 43)      |
|       | 42 36315    | 1   | Ring Set (Std.)                                |
|       | 42 36316    | 1   | Ring Set (.010" OS)                            |
|       | 42 36317    | 1   | Ring Set (.020" OS)                            |
|       | 43 35772    | 2   | Piston Pin Retaining Ring                      |
|       | 45 36318A   | 1   | Connecting Rod (Incl. 46)                      |
|       | 45 36319A   | 1   | Connecting Rod Ass'y. (.010" US) (Incl. 46)    |
|       | 45 36320A   | 1   | Connecting Rod Ass'y. (.020" US) (Incl. 46)    |
|       | 46 651063   | 2   | Connecting Rod Bolt                            |
|       | 48 36321    | 2   | Valve Lifter                                   |
|       | 50A 730656  |     | Camshaft Repair Kit                            |
|       | 50 36533A   | 1   | Camshaft (MCR)                                 |
|       | 51 36323    | 1   | Counterbalance Weight                          |
|       | 52A 36331   | 1   | Oil Pump Shaft                                 |
|       | 52 37305    | 1   | Oil Pump Ass'y.                                |
|       | 52D 650888  | 3   | Screw, T-30, 1/4-20 x 43/64"                   |
|       | 52C 36334   | 1   | Oil Pump Cover (Incl. 52B)                     |
|       | 52B 36333   | 1   | * "O" Ring                                     |
|       | 60B 650867  | 1   | Screw, 10-24 x 1/2"                            |
|       | 60A 650273  | 1   | Screw, 5-16/18 x 17/32"                        |
|       | 60 36361    | 1   | Air Baffle                                     |
|       | 65 30063    | 1   | Screw, T-30, 1/4-20 x 1/2"                     |
|       | 66 650737   | 2   | Screw, 1/4-20 x 1/2"                           |
|       | 69 36565    | 1   | * Mounting Flange Gasket                       |
|       | 70 37304A   | 1   | Mounting Flange (Incl. 72A,72B,75,80, 381-387) |
|       | 72A 28483   | 2   | Oil Drain Plug                                 |
|       | 72B 28534   | 4   | Pipe Plug                                      |
|       | 75A 510337  | 1   | Oil Seal (Governor Shaft)                      |
|       | 75 36301    | 1   | Oil Seal                                       |
|       | 80 35712    | 1   | Governor Shaft                                 |
|       | 81 35479A   | 2   | Washer   |
|       | 82 37756    | 1   | Governor Gear Ass'y.                           |
|       | 83 35322    | 1   | Governor Spool                                 |
|       | 84 29193    | 1   | Retaining Ring                                 |
|       | 86 650970   | 9   | Screw, 1/4-20 x 1-15/32"                       |
|       | 89 650592   | 1   | Flywheel Key                                   |
|       | 90 611243   | 1   | Flywheel                                       |
|       | 91 611241A  | 1   | Flywheel Fan                                   |
|       | 91A 611242  | 1   | Flywheel Fan Retainer                          |
|       | 100 36344A  | 1   | Solid State Ignition (Incl. 101)               |
|       | 101 610118  | 1   | Spark Plug Cover                               |
|       | 102 651024  | 2   | Solid State Mounting Stud                      |
|       | 103 651007  | 2   | Screw, T-15, 10-24 x 15/16"                    |
|       | 110 36917   | 1   | Ground Wire                                    |

| Ref # | Part Number | Qty | Description                                       |
|-------|-------------|-----|---|
| 119   | 37493       | 1   | * Cylinder Head Gasket                            |
| 120   | 37757       | 1   | Cylinder Head (Incl. 119,151A & 270A)             |
| 125   | 35308       | 1   | Exhaust Valve (Std.)                              |
| 125   | 35433       | 1   | Exhaust Valve (1/32" OS)                          |
| 126   | 35309       | 1   | Intake Valve (Std.)                               |
| 127   | 650691      | 6   | Washer  |
| 128   | 650690      | 6   | Belleville Washer                                 |
| 130   | 650946      | 6   | Screw, 5/16-18 x 2-45/64"                         |
| 135   | 34645       | 1   | Resistor Spark Plug (RN4C)                        |
| 150   | 33507       | 2   | Valve Spring                                      |
| 151   | 33508       | 2   | Valve Spring Keeper                               |
| 151A  | 40046       | 1   | Intake Valve Seal                                 |
| 153   | 36339       | 1   | Push Rod Guide                                    |
| 154   | 651105      | 2   | Rocker Arm Stud                                   |
| 155   | 35950       | 2   | Rocker Arm  |
| 156   | 37843       | 2   | Rocker Arm Bearing                                |
| 157A  | 650586      | 2   | Jam Nut 5/16-24                                   |
| 158   | 36340       | 2   | Push Rod  |
| 159   | 35952       | 1   | * Rocker Arm Cover Gasket                         |
| 160   | 35953A      | 1   | Rocker Arm Housing                                |
| 161   | 30063       | 4   | Screw, T-30, 1/4-20 x 1/2"                        |
| 169   | 36304       | 1   | * Breather Gasket                                 |
| 172   | 36305       | 1   | Valve Cover                                       |
| 173   | 36306       | 1   | Breather Tube                                     |
| 174   | 30063       | 4   | Screw, T-30, 1/4-20 x 1/2"                        |
| 265   | 36615       | 1   | Cylinder Head Cover                               |
| 270A  | 35829A      | 1   | Exhaust Port Liner                                |
| 294   | 35791       | 1   | Pulse Pump Repair Kit                             |
| 305   | 36349       | 1   | Oil Fill Tube                                     |
| 306   | 37401       | 1   | * "O" Ring  |
| 307   | 35499       | 1   | "O" Ring  |
| 309   | 650974      | 1   | Screw, 1/4-20 x 57/64"                            |
| 310   | 36366       | 1   | Dipstick  |
| 314   | 651007      | 2   | Screw, T-15, 10-24 x 15/16"                       |
| 315   | 611280      | 1   | Alternator Coil (3/5 Split)(Incl. 321 ,322 & 323) |
| 321   | 611161      | 1   | Diode   |
| 322   | 611281      | 1   | Connector Body                                    |
| 323   | 611282      | 2   | Terminal  |
| 325   | 36342       | 1   | Wire Clip   |
| 325B  | 37230       | 1   | Wire Clip   |
| 346   | 36413       | 1   | Fuel Pump Bracket                                 |
| 361   | 650969      | 2   | Screw, 15/16-18 x 29/32"                          |
| 381   | 650767      | 1   | Screw, 8-32 x 27/64"                              |
| 382   | 36328       | 1   | Oil Strainer Screen                               |
| 385   | 570673      | 1   | Ball  |
| 386   | 36329       | 1   | Pressure Relief Spring                            |
| 387   | 37652       | 1   | Cotter Pin  |
| 395   | 36795       | 1   | Electric Starter Motor (12 Volt)                  |
| 400   | 37496       | 1   | * Gasket Set (Incl. items marked PK i n notes)    |
| 420   | 730225A     | 1   | SAE 30 4-Cycle Engine Oil (Quart)                 |
| 475   | 36563       | 1   | Oil Filter  |
| 476   | 37789       | 1   | Oil Filter Adapter (Incl. 477 & 479)              |
| 477   | 651087      | 2   | Screw, T-30, 5/16-18 x 2"                         |
| 479   | 36335       | 1   | * Oil Passage Gasket                              |



| Ref # | Part Number | Qty | Description                          |
|-------|-------------|-----|--------------------------------------|
| 14    | 651052      | 2   | Washer                               |
| 16    | 37758       | 1   | Governor Lever                       |
| 17    | 29916       | 1   | Governor Lever Clamp                 |
| 18    | 651028      | 1   | Screw, T-15, 8-32 x 7/16"            |
| 19    | 37766       | 1   | Extension Spring                     |
| 28    | 30322       | 1   | Lock Nut, 8-32                       |
| 35    | 29826       | 1   | Screw, 10-32 x 3/4"                  |
| 36    | 29918       | 1   | Lock Washer                          |
| 37    | 29216       | 1   | Lock Nut, 10-32                      |
| 38    | 37109       | 1   | Retaining Ring                       |
| 60C   | 650737      | 1   | Screw, 1/4-20 x 1/2"                 |
| 60B   | 650867      | 1   | Screw, 10-24 x 1/2"                  |
| 60A   | 650273      | 1   | Screw, 5-16/18 x 17/32"              |
| 92    | 651082      | 1   | Belleville Washer                    |
| 93    | 650594      | 1   | Flywheel Nut                         |
| 110A  | 36917       | 1   | Ground Wire & Terminal               |
| 157A  | 650586      | 2   | Jam Nut 5/16-24                      |
| 178   | 650928      | 2   | Wing Nut, 1/4-20                     |
| 182   | 650925A     | 2   | Carburetor Mounting Stud             |
| 184   | 36352       | 1   | * Carburetor To Intake Pipe Gasket   |
| 185   | 37767       | 1   | Intake Pipe                          |
| 186   | 36354       | 1   | Governor Link                        |
| 186A  | 36353       | 1   | Choke Link                           |
| 200   | 36360       | 1   | Control Bracket (Incl. 203,204,212A) |
| 203   | 36482       | 1   | Compression Spring                   |
| 204   | 651019      | 1   | Screw, T-10, 6-32 x 41/64"           |
| 209   | 650902      | 2   | Screw, 10-32 x 7/16"                 |
| 210   | 27793       | 1   | Conduit Clip                         |
| 211   | 28942       | 1   | Screw, 10-32 x 3/8"                  |
| 212A  | 36288       | 3   | Bushing                              |
| 223   | 650975      | 2   | Screw, T-30, 5/16-18 x 1-9/32"       |
| 224   | 36490       | 1   | * Intake Pipe Gasket                 |
| 228   | 650977      | 2   | Air Cleaner Stud                     |
| 234   | 650825      | 2   | Nut & Lock Washer, 1/4-20            |
| 239   | 36358       | 1   | * Air Cleaner Gasket                 |
| 240   | 36355       | 1   | Air Cleaner Body (Incl. 228 & 239)   |
| 245   | 36356       | 1   | Air Cleaner Filter (Incl. 229)       |
| 245A  | 36357       | 1   | Air Cleaner Filter                   |
| 250   | 36359       | 1   | Air Cleaner Cover                    |
| 251   | 650886      | 2   | Wing Nut, 1/4-20                     |
| 252   | 650976      | 1   | Screw, 1/4-20 x 19/32"               |
| 260   | 36347       | 1   | Blower Housing                       |
| 262   | 650737      | 3   | Screw, 1/4-20 x 1/2"                 |
| 263   | 36367       | 1   | Trim Ring (Black)                    |
| 286   | 36343       | 1   | Cup & Screen                         |
| 290   | 29774       | 1   | Fuel Line                            |
| 291   | 30705       | 1   | Fuel Line                            |
| 291A  | 29774       | 1   | Fuel Line                            |
| 292   | 26460       | 6   | Fuel Line Clamp                      |
| 293A  | 650931      | 2   | Screw, 8-32 x 1-1/2"                 |
| 293   | 35787       | 1   | Pulse Pump (Incl. 294)               |
| 296   | 37768       | 1   | Fuel Filter (Incl. 292)              |
| 303   | 32958       | 1   | Fuel Fitting                         |
| 326   | 36210       | 1   | Screen Plug                          |
| 347   | 650949      | 3   | Screw, 10-24 x 9/16"                 |
| 370G  | 35274       | 1   | Oil Instruction Decal                |
| 370G  | 36534       | 1   | Warning Decal                        |
| 380   | 640330      | 1   | Carburetor (Incl. 184 & 212A)        |