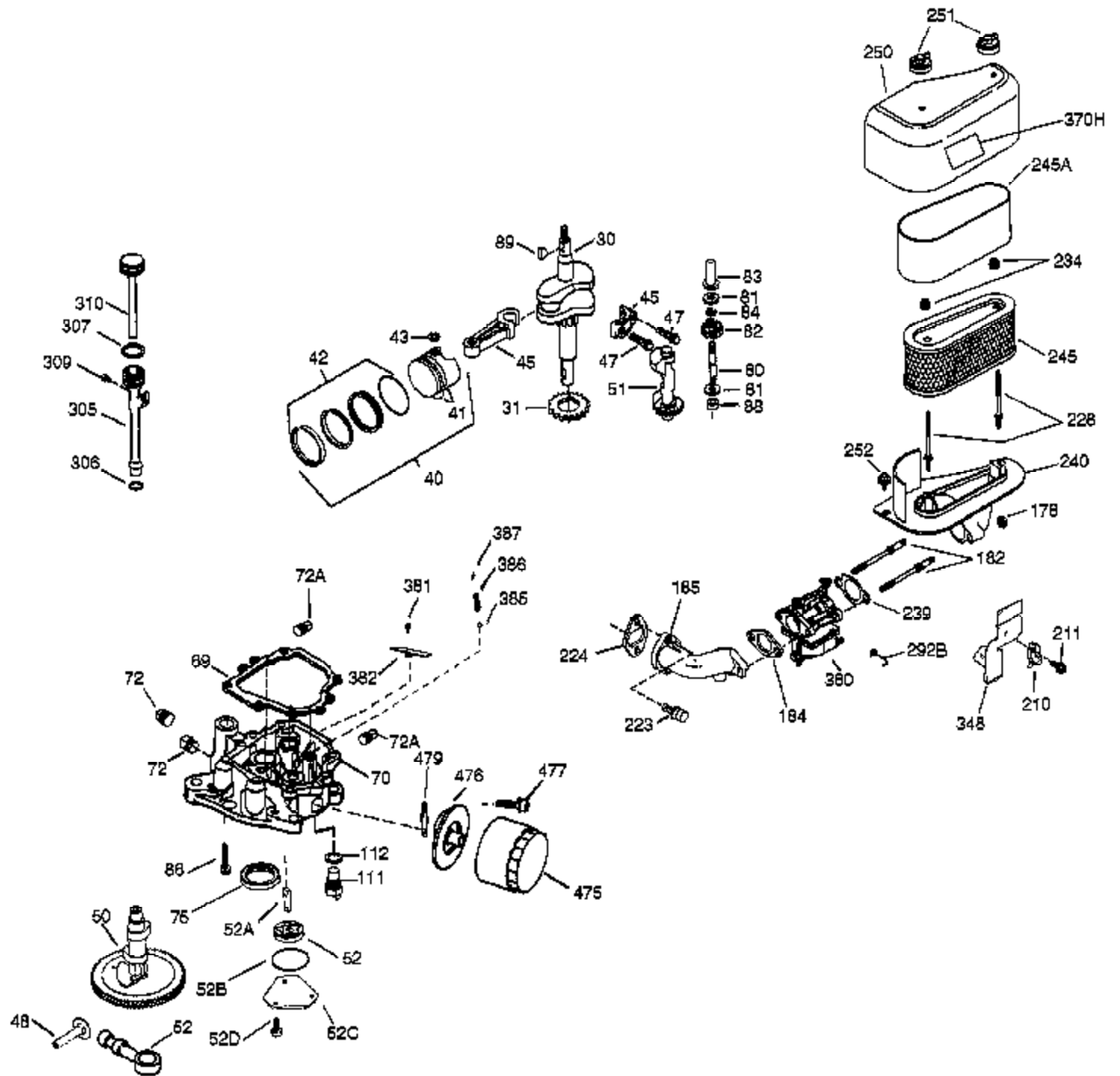


| Ref # | Part Number | Qty | Description |
|-------|-------------|-----|----------------------------------|
| | 1 36922 | 1 | Cylinder (Incl. 2 & 20) |
| | 2 27652 | 2 | Dowel Pin |
| | 14 28277 | 2 | Washer |
| | 15 35324 | 1 | Governor Rod |
| | 16 36284A | 1 | Governor Lever |
| | 17 29916 | 1 | Governor Lever Clamp |
| | 18 651028 | 1 | Screw, Torx T-15, 8-32 x 3/8" |
| | 19 35945 | 1 | Extension Spring |
| | 20 35319 | 1 | Oil Seal |
| | 25 37185 | 1 | Blower Housing Baffle |
| | 26 650561 | 2 | Screw, 1/4-20 x 5/8" |
| | 28 30322 | 1 | Lock Nut, 8-32 |
| | 35 29826 | 1 | Screw, 10-32 x 3/4" |
| | 36 29918 | 1 | Lock Washer |
| | 37 29216 | 1 | Lock Nut, 10-32 |
| | 38 29642 | 1 | Retainer Ring |
| | 52 36931 | 1 | Oil Pump Ass'y. |
| | 52 36332 | 1 | Oil Pump |
| | 60 36927 | 1 | Blower Housing Extension |
| | 62 650760 | 1 | Screw, 8-32 x 3/8" |
| | 63 28545 | 1 | Grommet |
| | 65 650128 | 1 | Screw, 10-24 x 1/2" |
| | 66 30063 | 1 | Screw, Torx T-30, 1/4-20 x 1/2" |
| | 68 33356 | 1 | Ground Terminal |
| | 90 611253 | 1 | Flywheel |
| | 91 611241 | 1 | Flywheel Fan |
| | 91A 611251 | 1 | Flywheel Retainer |
| | 92 650666 | 1 | Lock Washer |
| | 93 650594 | 1 | Flywheel Nut |
| | 100 36344 | 1 | Solid State Ignition (Incl. 101) |
| | 101 610118 | 1 | Spark Plug Cover |
| | 102 651024 | 2 | Solid State Mounting Stud |
| | 103 651007 | 2 | Screw, Torx T-15, 10-24 x 15/16" |
| | 110 35183 | 1 | Ground Wire |
| | 119 36932 | 1 | * Cylinder Head Gasket |
| | 120 36933 | 1 | Cylinder Head |
| | 125 36934 | 1 | Exhaust Valve (Std.) |
| | 125 36936 | 1 | Exhaust Valve (1/32" OS) |
| | 126 36935 | 1 | Intake Valve (Std.) |
| | 126 36937 | 1 | Intake Valve (1/32" OS) |
| | 127 650691 | 6 | Washer |
| | 128 650690 | 6 | Belleville Washer |
| | 130 650697A | 6 | Screw, 5/16-18 x 2-1/2" |
| | 135 34645 | 1 | Spark Plug (RN4C) |
| | 150 33507 | 2 | Valve Spring |
| | 151 33508 | 2 | Valve Spring Keeper |
| | 153 35949 | 1 | Push Rod Guide |
| | 154 650945 | 2 | Rocker Arm Stud |
| | 155 35950 | 2 | Rocker Arm |
| | 156 650890 | 2 | Lock Washer |
| | 157 650947 | 2 | Lock Nut, 5/16-24 |
| | 158 35466 | 2 | Push Rod |
| | 159 35952 | 1 | * Rocker Arm Cover Gasket |
| | 160 35953A | 1 | Rocker Arm Housing |
| | 161 30063 | 4 | Screw, Torx T-30, 1/4-20 x 1/2" |
| | 169 27896A | 2 | * Breather Gasket |
| | 170 28423 | 1 | Breather Body |
| | 171 28424 | 1 | Breather Element |

| Ref # | Part Number | Qty | Description |
|-------|-------------|-----|--|
| 172 | 36938 | 1 | Valve Cover |
| 173 | 36939 | 1 | Breather Tube |
| 174 | 650128 | 2 | Screw, 10-24 x 1/2" |
| 180 | 35954 | 1 | Blower Housing Extension |
| 181 | 30200 | 2 | Screw, 10-24 x 9/16" |
| 186A | 36991 | 1 | Choke Link |
| 186 | 36941 | 1 | Governor Link |
| 200 | 36360 | 1 | Control Bracket (Incl. 203, 204 & 212 A) |
| 203 | 36482 | 1 | Compression Spring |
| 204 | 650777 | 1 | Screw, 6-32 x 21/32" |
| 209 | 650902 | 2 | Screw, 10-32 x 7/16" |
| 210 | 27793 | 1 | Conduit Clip |
| 211 | 28942 | 1 | Screw, 10-32 x 3/8" |
| 212A | 36288 | 3 | Bushing |
| 260 | 36943 | 1 | Blower Housing |
| 262 | 30063 | 2 | Screw, Torx T-30, 1/4-20 x 1/2" |
| 263 | 36367 | 1 | Trim Ring |
| 264 | 650273 | 1 | Screw, 5/16-18 x 5/8" |
| 264 | 650273 | 1 | Screw, 5/16-18 x 5/8" |
| 265 | 36944 | 1 | Cylinder Head Cover |
| 266A | 650876 | 2 | Screw, 5/16-18 x 1-1/4" |
| 269 | 35762 | 2 | * Exhaust Manifold Gasket |
| 270A | 35829A | 1 | Exhaust Port Liner |
| 270 | 36235 | 1 | Exhaust Manifold |
| 271 | 35293 | 1 | Locking Plate |
| 275 | 36542 | 1 | Muffler |
| 276 | 35348 | 1 | Locking Plate |
| 277 | 650877 | 2 | Screw, 5/16-18 x 4-1/2" |
| 286 | 37173 | 1 | Cup & Screen |
| 287 | 650561 | 3 | Screw, 1/4-20 x 19/32" |
| 290 | 29774 | 1 | Fuel Line |
| 292 | 26460 | 2 | Fuel Line Clamp |
| 296 | 34279B | 1 | Fuel Filter (Incl. 292) |
| 314 | 650873 | 2 | Screw, 1/4-20 x 3/4" |
| 315 | 611104 | 1 | Alternator Coil (3/5 Split)(Incl. 321 -323) |
| 321 | 611161 | 1 | Diode |
| 322 | 611114 | 1 | Connector Body |
| 323 | 611118 | 1 | Terminal |
| 325 | 34246 | 1 | Wire Clip |
| 330 | 611167 | 1 | Wire Harness |
| 361 | 650990 | 4 | Screw, Torx T-30, 5/16-18 x 15/32" |
| 370G | 35274 | 1 | Oil Instruction Decal |
| 390 | 590751 | 1 | Rewind Starter |
| 395 | 36914 | 1 | Electric Starter Motor (12 Volt) |
| 400 | 36947 | 1 | * Gasket Set (Incl. items marked PK i n notes) Incl. part #'s 27896A (2),35317 (1), 35952 (1), 36333 (1), 36352 (1), 36358 (2), 36832 (1), 36930 (1), 36932 (1), 36942 (1) |
| 420 | 730225 | 1 | SAE 30 4-Cycle Engine Oil (Quart) |



| Ref # | Part Number | Qty | Description |
|-------|-------------|-----|---|
| 30 | 36924 | 1 | Crankshaft |
| 31 | 35327 | 1 | Counterbalance Gear |
| 40 | 35776A | 1 | Piston, Pin & Ring Set (Std.) |
| 40 | 35777A | 1 | Piston, Pin & Ring Set (.010" OS) |
| 40 | 35778A | 1 | Piston, Pin & Ring Set (.020" OS) |
| 41 | 35773A | 1 | Piston & Pin Ass'y. (Std.) (Incl. 43) |
| 41 | 35774A | 1 | Piston & Pin Ass'y. (.010" OS) (Incl. 43) |
| 41 | 35775A | 1 | Piston & Pin Ass'y. (.020" OS) (Incl. 43) |
| 42 | 35779 | 1 | Ring Set (Std.) |
| 42 | 35780 | 1 | Ring Set (.010" OS) |
| 42 | 35781 | 1 | Ring Set (.020" OS) |
| 43 | 35772 | 2 | Piston Pin Retaining Ring |
| 45 | 36925 | 1 | Connecting Rod Ass'y. (Incl. 47) |
| 47 | 651033 | 2 | Connecting Rod Bolt |
| 48 | 35313 | 2 | Valve Lifter |
| 50 | 37221 | 1 | Camshaft (MCR) |
| 51 | 35315A | 1 | Counterbalance Weight |
| 52 | 36931 | 1 | Oil Pump Ass'y. |
| 52 | 36332 | 1 | Oil Pump |
| 52A | 36331 | 1 | Oil Pump Shaft |
| 52B | 36333 | 1 | * "O" Ring |
| 52C | 36334 | 1 | Oil Pump Cover (Incl. 52B) |
| 52D | 650888 | 3 | Screw, 1/4-20 x 43/64" |
| 62 | 650760 | 1 | Screw, 8-32 x 3/8" |
| 69 | 35317 | 1 | * Mounting Flange Gasket |
| 70 | 36928 | 1 | Mounting Flange (Incl. 72, 75 & 80) |
| 72 | 31927 | 1 | Oil Drain Plug |
| 75 | 35319 | 1 | Oil Seal |
| 80 | 35712 | 1 | Governor Shaft |
| 81 | 35479 | 2 | Washer |
| 82 | 35321 | 1 | Governor Gear Ass'y. |
| 83 | 35322 | 1 | Governor Spool |
| 84 | 29193 | 1 | Retaining Ring |
| 86 | 650833 | 7 | Screw, 1/4-20 x 1-3/16" |
| 88 | 31707A | 1 | Spacer |
| 89 | 650592 | 1 | Flywheel Key |
| 178 | 650928 | 2 | Lock Nut, 1/4-20 |
| 182 | 650925A | 2 | Carburetor Mounting Stud |
| 184 | 36352 | 1 | * Carburetor To Intake Pipe Gasket |
| 185 | 36940 | 1 | Intake Pipe |
| 210 | 27793 | 1 | Conduit Clip |
| 211 | 28942 | 1 | Screw, 10-32 x 3/8" |
| 223 | 650378 | 2 | Screw, Torx T-30, 5/16-18 x 1-3/32" |
| 224 | 36942 | 1 | * Intake Pipe Gasket |
| 228 | 650977 | 2 | Air Cleaner Stud |
| 234 | 650825 | 2 | Nut & Lock Washer, 1/4-20 |
| 239 | 36358 | 1 | * Air Cleaner Gasket |
| 240 | 36355 | 1 | Air Cleaner Body (Incl. 239) |
| 245 | 36356 | 1 | Air Cleaner Filter (Incl. 234) |
| 245A | 36357 | 1 | Air Cleaner Filter |
| 250 | 36359 | 1 | Air Cleaner Cover |
| 251 | 650886 | 2 | Wing Nut, 1/4-20 |
| 252 | 650976 | 1 | Screw, 1/4-20 x 19/32" |
| 266A | 650876 | 2 | Screw, 5/16-18 x 1-1/4" |
| 286 | 37173 | 1 | Cup & Screen |
| 292B | 36946 | 1 | Fuel Line Clamp |
| 305 | 36945 | 1 | Oil Fill Tube |
| 306 | 36832 | 1 | Fill Tube Gasket |

| Ref # | Part Number | Qty | Description |
|-------|-------------|-----|--------------------------------------|
| 307 | 35499 | 1 | "O" Ring |
| 309 | 650976 | 1 | Screw, 1/4-20 x 19/32" |
| 310 | 35973 | 1 | Dipstick |
| 380 | 640065 | 1 | Carburetor (Incl. 184) |
| 381 | 650767 | 2 | Screw, 8-32 x 27/64" |
| 385 | 570673 | 1 | Ball |
| 386 | 36329 | 1 | Pressure Relief Spring |
| 387 | 36330 | 1 | Roll Pin |
| 475 | 36961 | 1 | Oil Filter |
| 476 | 36929 | 1 | Oil Filter Adapter (Incl. 477 & 479) |
| 477 | 651049 | 2 | Screw, Torx T-30, 5/16-18 x 1-3/32" |
| 479 | 36930 | 1 | * Oil Filter Adapter Gasket |