

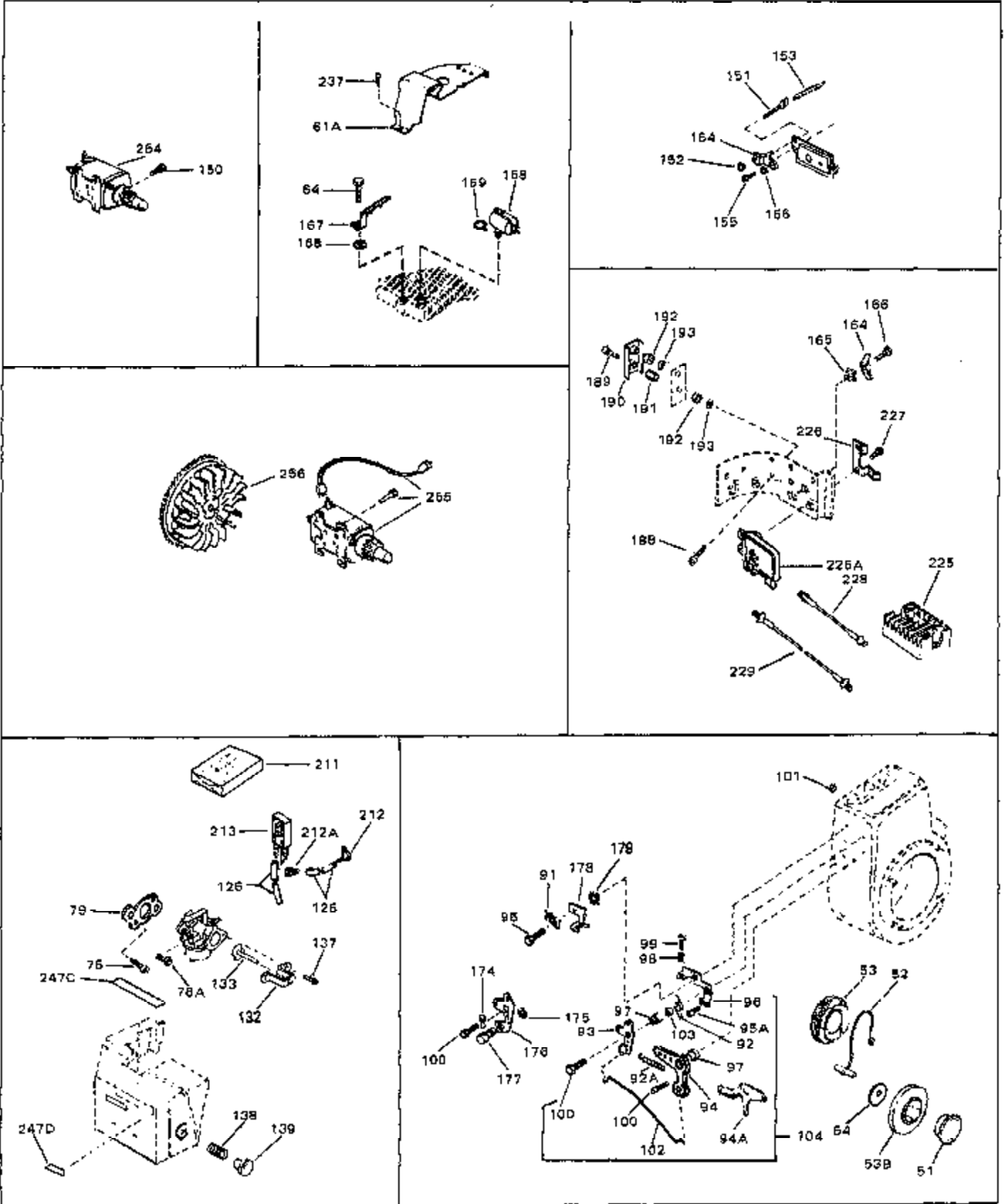
## Engine Parts List #1

| Ref # | Part Number | Qty | Description                                 |
|-------|-------------|-----|---|
|       | 1 33867A    | 0   | Cylinder Assy.                              |
|       | 2 27652     | 0   | Pin, Dowel                                  |
|       | 3 32630     | 0   | Seal, Oil                                   |
|       | 4 27642     | 0   | Plug, Drain                                 |
|       | 5 30699B    | 0   | Rod Assy., Governor                         |
|       | 5A 30699C   | 0   | Rod Assy., Governor                         |
|       | 6 30700     | 0   | Yoke, Governor                              |
|       | 7 650494    | 0   | Screw                                       |
|       | 8 29642     | 0   | Ring, Retaining                             |
|       | 9 29916     | 0   | Clamp, Governor lever                       |
|       | 10 29826    | 0   | Screw                                       |
|       | 11 29216    | 0   | Nut   |
|       | 12 650548   | 0   | Screw, Hex washer hd., 8-32 x 5/16          |
|       | 13 33454    | 0   | Lever, Governor                             |
|       | 14 29918    | 0   | Lockwasher                                  |
|       | 15 30322    | 0   | Nut & Lockwasher                            |
|       | 16 29536    | 0   | Baffle, Blower housing                      |
|       | 17 650561   | 0   | Screw                                       |
|       | 18 27275    | 0   | Clip, Hi-tension wire                       |
|       | 18A 29443   | 0   | Clip, Fuel line                             |
|       | 19 33624A   | 0   | Crankshaft Assy.                            |
|       | 20 29783    | 0   | Pin, Crankshaft gear                        |
|       | 21 33245    | 0   | Gear, Crankshaft                            |
|       | 22A 33869B  | 0   | Piston & Pin Assy. (Std.) (3-1/16")         |
|       | 22A 33870B  | 0   | Piston & Pin Assy. (.010 oversize)          |
|       | 22A 33871B  | 0   | Piston & Pin Assy. (.020 oversize)          |
|       | 22 34540    | 0   | Piston, Pin & Ring Assy. (Std.) (3-1/16")   |
|       | 22 34541    | 0   | Piston, Pin & Ring Assy. (.010 oversize)    |
|       | 22 34542    | 0   | Piston, Pin & Ring Assy. (.020 oversize)    |
|       | 23 27888    | 0   | Ring, Piston pin retaining                  |
|       | 24 33873    | 0   | Ring Set, Piston (Standard) (3-1/16")       |
|       | 24 33874    | 0   | Ring Set, Piston (.010 oversize)            |
|       | 24 33875    | 0   | Ring Set, Piston (.020 oversize)            |
|       | 25 32591C   | 0   | Rod Assy., Connecting                       |
|       | 26 650662B  | 0   | Bolt, Connecting rod                        |
|       | 27A 32590   | 0   | Plate, Lock & Oil dipper                    |
|       | 27 34242    | 0   | Dipper, Oil                                 |
|       | 28 34034    | 0   | Lifter, Valve                               |
|       | 29 33366    | 0   | Camshaft (Compression Release)              |
|       | 30 33253    | 0   | Gasket, Mounting flange                     |
|       | 31 33626A   | 0   | Cover, Cylinder                             |
|       | 33 33625    | 0   | Seal, Oil                                   |
|       | 34 31845    | 0   | Shaft, Mechanical governor                  |
|       | 35 30588A   | 0   | Spool, Governor                             |
|       | 36 29193    | 0   | Ring, Retaining                             |
|       | 37 30591    | 0   | Gear Assy., Governor                        |
|       | 38 33369    | 0   | Bracket, Governor gear                      |
|       | 39 650836   | 0   | Screw, Hex washer hd. thread forming, 10-24 |
|       | 40 30590A   | 0   | Washer, Flat                                |
|       | 41 650488   | 0   | Screw                                       |
|       | 42 650493   | 0   | Screw, Hex hd. Sems, 1/4-20 x 1-3/4         |
|       | 43 33242    | 0   | Valve, Intake (Standard)                    |
|       | 43 33243    | 0   | Valve, Intake (1/32" oversize)              |
|       | 44 27878A   | 0   | Valve, Intake (Standard)                    |
|       | 44 27880A   | 0   | Valve, Intake (1/32" oversize)              |
|       | 45 27882    | 0   | Cap, Upper valve spring                     |
|       | 46 27881    | 0   | Spring, Valve                               |
|       | 47 32581    | 0   | Cap, Lower valve spring                     |

## Engine Parts List #1

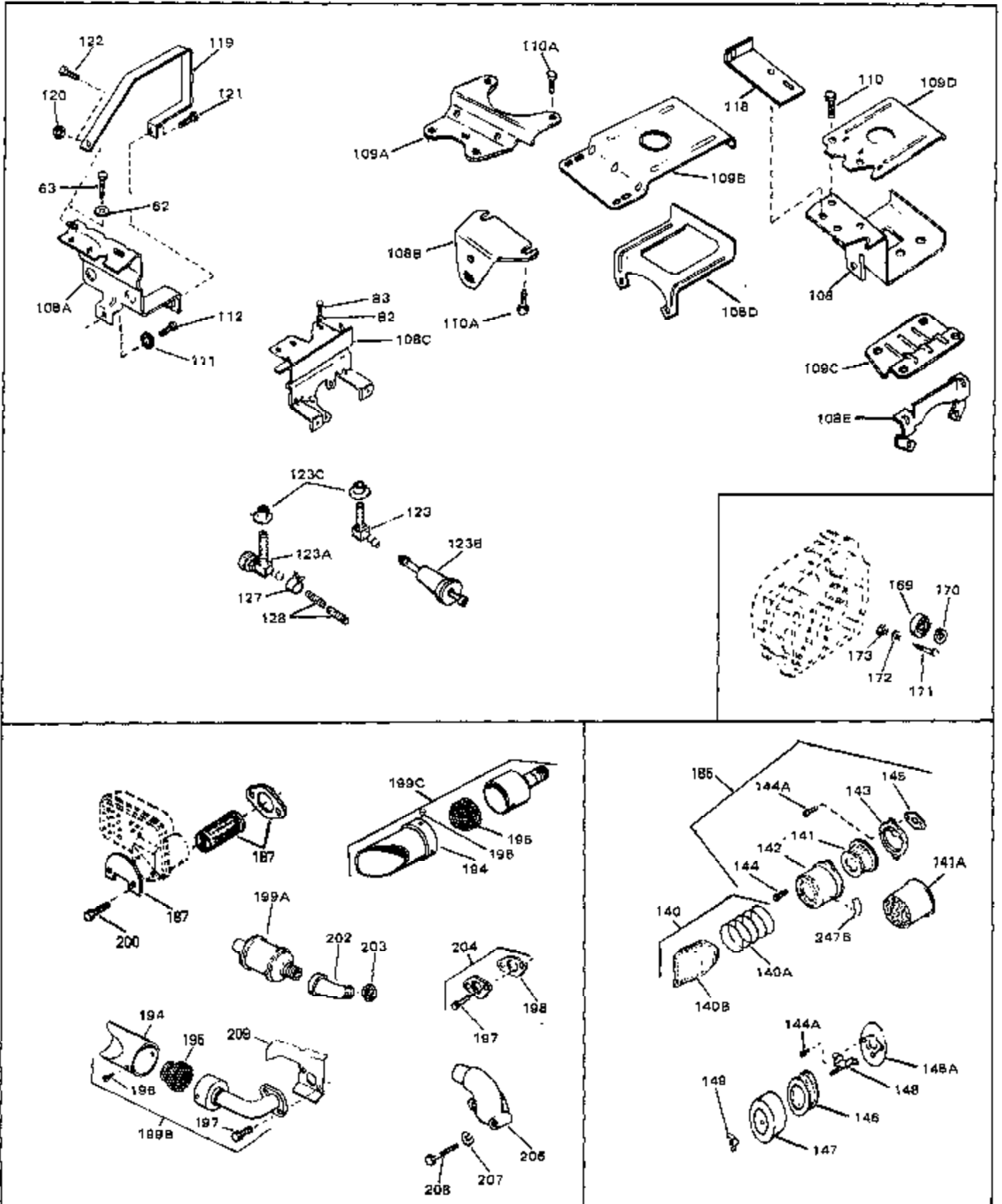
| Ref # | Part Number | Qty | Description                                 |
|-------|-------------|-----|---|
| 48    | 650489      | 0   | Screw                                       |
| 48    | 650516      | 0   | Screw                                       |
| 49    | 610118      | 0   | Cover, Spark plug                           |
| 50    | 32589       | 0   | Key, Flywheel                               |
| 53A   | 33662       | 0   | Hub & Screen Assy., Starter                 |
| 54A   | 650815      | 0   | Washer, Belleville                          |
| 55    | 8116        | 0   | Nut   |
| 56    | 34030       | 0   | Head, Cylinder                              |
| 57    | 33270       | 0   | Gasket, Cylinder head                       |
| 58    | 6021A       | 0   | Screw, Hex flange hd., 5/16-18 x 1-1/2      |
| 58    | 650692      | 0   | Screw, Hex hd., 5/16-18 x 1-3/4             |
| 58    | 650711      | 0   | Screw, Hex hd., 5/16-18 x 1-5/8             |
| 58    | 650737      | 0   | Screw, Hex washer hd. taptite, 1/4-20 x 1/2 |
| 59    | 650727      | 0   | Screw, Special hex hd. tapped, 5/16-18 x    |
| 60    | 650691      | 0   | Washer, Flat                                |
| 61    | 33272       | 0   | Cover, Cylinder head                        |
| 62    | 26073       | 0   | Washer, Connecting rod bolt                 |
| 62    | 650570      | 0   | Washer, Flat                                |
| 63    | 650713      | 0   | Screw, Hex hd., 5/16-18 x 5/8               |
| 63    | 792028      | 0   | Screw, Hex hd. Sems, 5/16-18 x 7/8          |
| 65    | 33636       | 0   | Plug, Spark (Champion J-8 or equivalent)    |
| 65    | 34251       | 0   | Resistor Spark Plug                         |
| 66    | 28423       | 0   | Body, Breather                              |
| 67    | 28424       | 0   | Element, Breather                           |
| 68    | 27896       | 0   | Gasket, Breather cover                      |
| 69    | 28425       | 0   | Cover, Valve chamber                        |
| 70    | 27627       | 0   | Tube, Breather                              |
| 71    | 650128      | 0   | Screw                                       |
| 72    | 27915       | 0   | Gasket, Intake pipe                         |
| 73    | 33877       | 0   | Pipe, Intake                                |
| 74    | 33861       | 0   | Gasket, Carburetor                          |
| 75    | 650378      | 0   | Screw                                       |
| 76    | 30088A      | 0   | Screw, Phil. fil. hd. Sems, 1/4-28 x 1      |
| 77    | 29752       | 0   | Nut   |
| 80    | 30831       | 0   | Wire, Ground (Female fitting both ends)     |
| 82    | 26073       | 0   | Washer, Connecting rod bolt                 |
| 82    | 650570      | 0   | Washer, Flat                                |
| 83    | 650273      | 0   | Screw                                       |
| 83    | 650713      | 0   | Screw, Hex hd., 5/16-18 x 5/8               |
| 83    | 650788      | 0   | Screw, Hex hd. spin-lock thr'd forming,     |
| 83    | 792028      | 0   | Screw, Hex hd. Sems, 5/16-18 x 7/8          |
| 86    | 33878       | 0   | Link, Governor lever-to-throttle            |
| 87    | 27793       | 0   | Clip, Conduit                               |
| 88    | 28942       | 0   | Screw                                       |
| 89    | 33375B      | 0   | Housing, Blower (6.375 dia. starter mtg.    |
| 90    | 29747A      | 0   | Screw                                       |
| 110   | 30688       | 0   | Screw, Hex hd. Sems, 1/4-20 x 1/2           |
| 112   | 650561      | 0   | Screw                                       |
| 113   | 33273       | 0   | Extension, Blower housing                   |
| 114   | 650128      | 0   | Screw                                       |
| 115   | 29752       | 0   | Nut   |
| 124   | 33350       | 0   | Tank Assy., Fuel (Charcoal Poly) (1 gal.)   |
| 125   | 33032       | 0   | Cap, Fuel filler (Red Plastic) (Spurt       |
| 125   | 34210       | 0   | Cap, Fuel filler (Red Plastic) (Spurt       |
| 125   | 410144B     | 0   | Cap, Fuel filler (White Plastic) (Std.)     |
| 126   | 29774       | 0   | Line, Fuel (Braided 8.25")                  |
| 126   | 30705       | 0   | Line, Fuel (Braided 16")                    |
| 126   | 30962       | 0   | Line, Fuel (Braided 32")                    |

| Ref # | Part Number | Qty | Description                                |
|-------|-------------|-----|--|
| 127   | 26460       | 0   | Clamp, Fuel line                           |
| 157   | 33876       | 0   | Gasket, Stator                             |
| 222   | 31297       | 0   | Dipstick, Oil                              |
| 224   | 29673       | 0   | Gasket, Filler plug                        |
| 247   | 34346       | 0   | Decal, Instruction                         |
| 247A  | 34316       | 0   | Decal, Name                                |
| 248   | 30547A      | 0   | Contact Assy., Breaker                     |
| 249   | 30548B      | 0   | Condenser                                  |
| 250A  | 631021      | 0   | Inlet Needle, Seat & Clip Assy.            |
| 251   | 631783      | 0   | Carburetor                                 |
| 252   | 610861      | 0   | Magneto, Tecumseh alternator (w/ring gear) |
| 253   | 590479      | 0   | Starter, Rewind                            |
| 257   | 33279C      | 0   | Gasket Set                                 |



## Engine Parts List #2

| Ref # | Part Number | Qty | Description                                 |
|-------|-------------|-----|---|
| 64    | 650737      | 0   | Screw, Hex washer hd. taptite, 1/4-20 x 1/2 |
| 75    | 650378      | 0   | Screw                                       |
| 91    | 27793       | 0   | Clip, Conduit                               |
| 92    | 32977       | 0   | Spring, Torsion                             |
| 92A   | 33578       | 0   | Spring Governor Spec. No. 40933K            |
| 93    | 30201A      | 0   | Lever, Speed control                        |
| 94    | 30712       | 0   | Lever, Bellcrank                            |
| 95A   | 650399      | 0   | Screw, Phil. fil. hd. Sems, 10-32 x 5/8     |
| 96    | 30199A      | 0   | Bracket, Speed control                      |
| 97    | 29530       | 0   | Bushing, Lever                              |
| 98    | 32924       | 0   | Spring, Compression                         |
| 99    | 650688      | 0   | Screw, Hex hd., 10-32 x 1-5/16" (Drilled    |
| 100   | 30312       | 0   | Screw, Hex washer hd. Sems, 10-32 x 1/2     |
| 101   | 33450       | 0   | Nut, Lock                                   |
| 102   | 33372       | 0   | Link, Governor lever-to-bellcrank           |
| 103   | 28562       | 0   | Bushing, Lever                              |
| 104   | 730152      | 0   | Control Assy., Speed                        |
| 126   | 29774       | 0   | Line, Fuel (Braided 8.25")                  |
| 126   | 30705       | 0   | Line, Fuel (Braided 16")                    |
| 126   | 30962       | 0   | Line, Fuel (Braided 32")                    |
| 150   | 30688       | 0   | Screw, Hex hd. Sems, 1/4-20 x 1/2           |
| 188   | 28726       | 0   | Screw, Phil. rd. hd., 5-40 x 9/16           |
| 189   | 30066       | 0   | Screw                                       |
| 190   | 30064       | 0   | Cover, Rectifier panel                      |
| 191   | 30065       | 0   | Nut, Long 5-40                              |
| 192   | 28728       | 0   | Nut   |
| 193   | 28727       | 0   | Lockwasher                                  |
| 254   | 33202       | 0   | Motor, Starter (12 Volt)                    |
| 254   | 33605       | 0   | Motor, Starter (12 Volt)                    |
| 255   | 33329       | 0   | Starter Motor Kit (110-120 Volt)            |
| 255   | 33329A      | 0   | Starter Motor Kit (110-120 Volt)            |
| 255   | 33329B      | 0   | Starter Motor Kit (110-120 Volt)            |
| 255   | 33519       | 0   | Starter Motor Kit (110-120 Volt)            |
| 255   | 33519A      | 0   | Starter Motor Kit (110-120 Volt)            |
| 255   | 33519B      | 0   | Starter Motor Kit (110-120 Volt)            |
| 256   | 610847      | 0   | Flywheel                                    |



| Ref # | Part Number | Qty | Description                             |
|-------|-------------|-----|---|
| 62    | 26073       | 0   | Washer, Connecting rod bolt             |
| 62    | 650570      | 0   | Washer, Flat                            |
| 63    | 650713      | 0   | Screw, Hex hd., 5/16-18 x 5/8           |
| 63    | 792028      | 0   | Screw, Hex hd. Sems, 5/16-18 x 7/8      |
| 82    | 26073       | 0   | Washer, Connecting rod bolt             |
| 82    | 650570      | 0   | Washer, Flat                            |
| 83    | 650273      | 0   | Screw                                   |
| 83    | 650713      | 0   | Screw, Hex hd., 5/16-18 x 5/8           |
| 83    | 650788      | 0   | Screw, Hex hd. spin-lock thr'd forming, |
| 83    | 792028      | 0   | Screw, Hex hd. Sems, 5/16-18 x 7/8      |
| 108   | 33381       | 0   | Bracket, Lower fuel tank mtg.           |
| 109D  | 33383A      | 0   | Plate, Upper fuel tank mtg.             |
| 110   | 30688       | 0   | Screw, Hex hd. Sems, 1/4-20 x 1/2       |
| 112   | 650561      | 0   | Screw                                   |
| 123   | 33395       | 0   | Fitting, Fuel line                      |
| 123C  | 33679       | 0   | Bushing, Fuel fitting                   |
| 127   | 26460       | 0   | Clamp, Fuel line                        |
| 128   | 28819       | 0   | Spring, Fuel line                       |
| 144A  | 28820       | 0   | Screw                                   |
| 145   | 27272       | 0   | Gasket, Air cleaner                     |
| 146   | 33268       | 0   | Element, Air cleaner                    |
| 147   | 33269A      | 0   | Cover, Air cleaner                      |
| 148A  | 33266       | 0   | Bracket, Air cleaner                    |
| 148   | 33267       | 0   | Bracket, Air cleaner                    |
| 149   | 650513      | 0   | Nut, Wing                               |
| 169   | 33627       | 0   | Bearing, Ball                           |
| 170   | 33628       | 0   | Washer, Thrust                          |
| 171   | 31855       | 0   | Retainer, Bearing                       |
| 172   | 650778      | 0   | Washer, Lock                            |
| 173   | 650580      | 0   | Nut, Lock                               |
| 185   | 730127      | 0   | Cleaner Assy., Air (Poly)               |
| 185   | 730164      | 0   | Cleaner Assy., Air (Paper)              |
| 199C  | 391026      | 0   | Muffler                                 |
| 202   | 30209       | 0   | Elbow, Exhaust (45°)                    |
| 204   | 730130      | 0   | Muffler Adapter Kit                     |
| 247B  | 31752       | 0   | Decal, Air cleaner                      |