

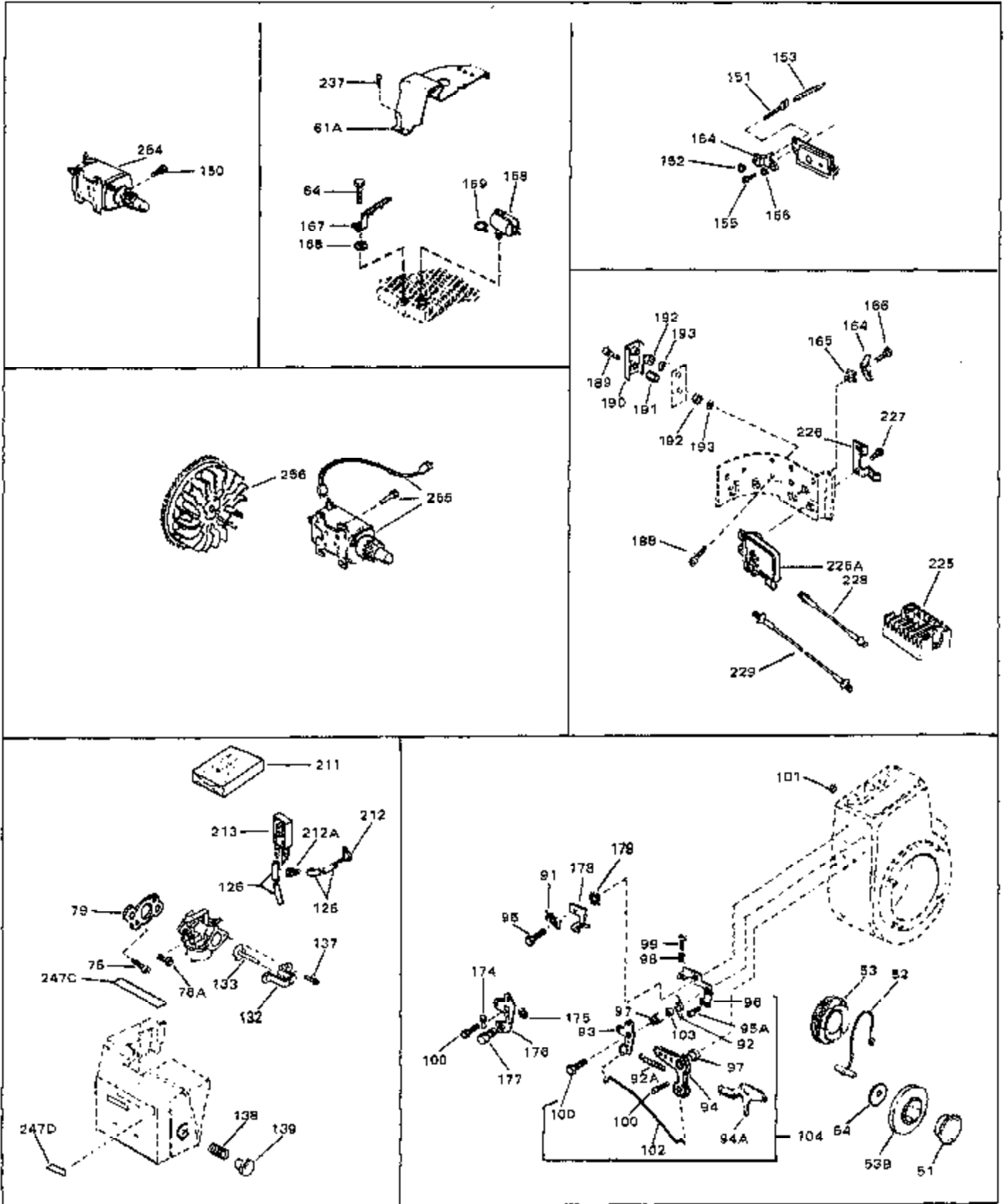
Engine Parts List #1

| Ref # | Part Number | Qty | Description |
|-------|-------------|-----|---|
| | 1 33867A | 0 | Cylinder Assy. |
| | 2 27652 | 0 | Pin, Dowel |
| | 3 32630 | 0 | Seal, Oil |
| | 4 27642 | 0 | Plug, Drain |
| | 5A 30699C | 0 | Rod Assy., Governor |
| | 5 30699B | 0 | Rod Assy., Governor |
| | 6 30700 | 0 | Yoke, Governor |
| | 7 650494 | 0 | Screw |
| | 8 29642 | 0 | Ring, Retaining |
| | 9 29916 | 0 | Clamp, Governor lever |
| | 10 29826 | 0 | Screw |
| | 11 29216 | 0 | Nut |
| | 12 650548 | 0 | Screw, Hex washer hd., 8-32 x 5/16 |
| | 13 33454 | 0 | Lever, Governor |
| | 14 29918 | 0 | Lockwasher |
| | 15 30322 | 0 | Nut & Lockwasher |
| | 16 29536 | 0 | Baffle, Blower housing |
| | 17 650561 | 0 | Screw |
| | 18 27275 | 0 | Clip, Hi-tension wire |
| | 18A 29443 | 0 | Clip, Fuel line |
| | 19 33624A | 0 | Crankshaft Assy. |
| | 20 29783 | 0 | Pin, Crankshaft gear |
| | 21 33245 | 0 | Gear, Crankshaft |
| | 22 34540 | 0 | Piston, Pin & Ring Assy. (Std.) (3-1/16") |
| | 22 34541 | 0 | Piston, Pin & Ring Assy. (.010 oversize) |
| | 22 34542 | 0 | Piston, Pin & Ring Assy. (.020 oversize) |
| | 22A 33869B | 0 | Piston & Pin Assy. (Std.) (3-1/16") |
| | 22A 33870B | 0 | Piston & Pin Assy. (.010 oversize) |
| | 22A 33871B | 0 | Piston & Pin Assy. (.020 oversize) |
| | 23 27888 | 0 | Ring, Piston pin retaining |
| | 24 33873 | 0 | Ring Set, Piston (Standard) (3-1/16") |
| | 24 33874 | 0 | Ring Set, Piston (.010 oversize) |
| | 24 33875 | 0 | Ring Set, Piston (.020 oversize) |
| | 25 32591C | 0 | Rod Assy., Connecting |
| | 26 650662B | 0 | Bolt, Connecting rod |
| | 27A 32590 | 0 | Plate, Lock & Oil dipper |
| | 27 34242 | 0 | Dipper, Oil |
| | 28 34034 | 0 | Lifter, Valve |
| | 29 33366 | 0 | Camshaft (Compression Release) |
| | 30 33253 | 0 | Gasket, Mounting flange |
| | 31 33626A | 0 | Cover, Cylinder |
| | 33 33625 | 0 | Seal, Oil |
| | 34 31845 | 0 | Shaft, Mechanical governor |
| | 35 30588A | 0 | Spool, Governor |
| | 36 29193 | 0 | Ring, Retaining |
| | 37 30591 | 0 | Gear Assy., Governor |
| | 38 33369 | 0 | Bracket, Governor gear |
| | 39 650836 | 0 | Screw, Hex washer hd. thread forming, 10-24 |
| | 40 30590A | 0 | Washer, Flat |
| | 41 650488 | 0 | Screw |
| | 42 650493 | 0 | Screw, Hex hd. Sems, 1/4-20 x 1-3/4 |
| | 43 33242 | 0 | Valve, Intake (Standard) |
| | 43 33243 | 0 | Valve, Intake (1/32" oversize) |
| | 44 27878A | 0 | Valve, Intake (Standard) |
| | 44 27880A | 0 | Valve, Intake (1/32" oversize) |
| | 45 27882 | 0 | Cap, Upper valve spring |
| | 46 27881 | 0 | Spring, Valve |
| | 47 32581 | 0 | Cap, Lower valve spring |

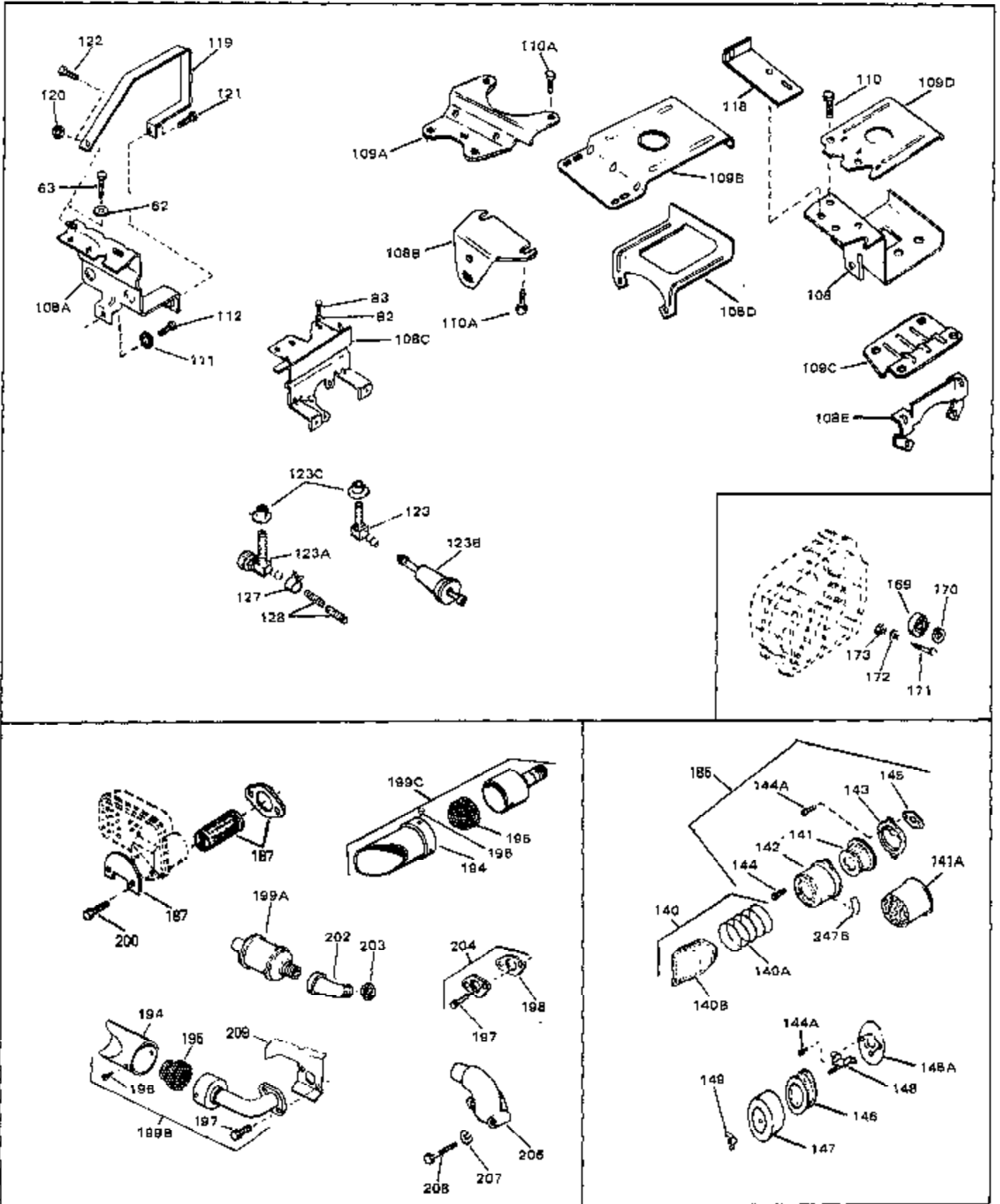
Engine Parts List #1

| Ref # | Part Number | Qty | Description |
|-------|-------------|-----|---|
| 48 | 650489 | 0 | Screw |
| 49 | 27276 | 0 | Cover, Spark plug |
| 50 | 32589 | 0 | Key, Flywheel |
| 53A | 33662 | 0 | Hub & Screen Assy., Starter |
| 54A | 650815 | 0 | Washer, Belleville |
| 55 | 8116 | 0 | Nut |
| 56 | 34030 | 0 | Head, Cylinder |
| 57 | 33270 | 0 | Gasket, Cylinder head |
| 58 | 6021A | 0 | Screw, Hex flange hd., 5/16-18 x 1-1/2 |
| 58 | 650692 | 0 | Screw, Hex hd., 5/16-18 x 1-3/4 |
| 58 | 650711 | 0 | Screw, Hex hd., 5/16-18 x 1-5/8 |
| 58 | 650737 | 0 | Screw, Hex washer hd. taptite, 1/4-20 x 1/2 |
| 59 | 650727 | 0 | Screw, Special hex hd. tapped, 5/16-18 x |
| 60 | 650691 | 0 | Washer, Flat |
| 61 | 33272 | 0 | Cover, Cylinder head |
| 62 | 26073 | 0 | Washer, Connecting rod bolt |
| 62 | 650570 | 0 | Washer, Flat |
| 63 | 650713 | 0 | Screw, Hex hd., 5/16-18 x 5/8 |
| 63 | 792028 | 0 | Screw, Hex hd. Sems, 5/16-18 x 7/8 |
| 65 | 33636 | 0 | Plug, Spark (Champion J-8 or equivalent) |
| 65 | 34251 | 0 | Resistor Spark Plug |
| 66 | 28423 | 0 | Body, Breather |
| 67 | 28424 | 0 | Element, Breather |
| 68 | 27896 | 0 | Gasket, Breather cover |
| 69 | 28425 | 0 | Cover, Valve chamber |
| 70 | 27627 | 0 | Tube, Breather |
| 71 | 650128 | 0 | Screw |
| 72 | 27915 | 0 | Gasket, Intake pipe |
| 73 | 33370 | 0 | Pipe, Intake |
| 74 | 33263 | 0 | Gasket, Carburetor |
| 75 | 650378 | 0 | Screw |
| 76 | 650698 | 0 | Screw, Fil. hd., 1/4-28 x 7/8 |
| 77 | 29752 | 0 | Nut |
| 80 | 30831 | 0 | Wire, Ground (Female fitting both ends) |
| 82 | 26073 | 0 | Washer, Connecting rod bolt |
| 82 | 650570 | 0 | Washer, Flat |
| 83 | 650273 | 0 | Screw |
| 83 | 650713 | 0 | Screw, Hex hd., 5/16-18 x 5/8 |
| 83 | 650788 | 0 | Screw, Hex hd. spin-lock thr'd forming, |
| 83 | 792028 | 0 | Screw, Hex hd. Sems, 5/16-18 x 7/8 |
| 86 | 33373 | 0 | Link, Governor lever-to-throttle |
| 89 | 33375B | 0 | Housing, Blower (6.375 dia. starter mtg. |
| 90 | 29747A | 0 | Screw |
| 110 | 30688 | 0 | Screw, Hex hd. Sems, 1/4-20 x 1/2 |
| 112 | 650561 | 0 | Screw |
| 113 | 33273 | 0 | Extension, Blower housing |
| 114 | 650128 | 0 | Screw |
| 115 | 29752 | 0 | Nut |
| 124 | 33350 | 0 | Tank Assy., Fuel (Charcoal Poly) (1 gal.) |
| 125 | 33032 | 0 | Cap, Fuel filler (Red Plastic) (Spurt |
| 125 | 34210 | 0 | Cap, Fuel filler (Red Plastic) (Spurt |
| 125 | 410144B | 0 | Cap, Fuel filler (White Plastic) (Std.) |
| 126 | 29774 | 0 | Line, Fuel (Braided 8.25") |
| 126 | 30705 | 0 | Line, Fuel (Braided 16") |
| 126 | 30962 | 0 | Line, Fuel (Braided 32") |
| 127 | 26460 | 0 | Clamp, Fuel line |
| 160 | 33013 | 0 | Cover, Starter bubble |
| 161 | 650760 | 0 | Screw |

| Ref # | Part Number | Qty | Description |
|-------|-------------|-----|--|
| 164 | 33356 | 0 | Terminal, Ground |
| 165 | 28545 | 0 | Grommet, Plastic |
| 166 | 650643 | 0 | Screw |
| 199 | 33280A | 0 | Muffler |
| 200 | 650729 | 0 | Screw |
| 201 | 31588 | 0 | Plate, Muffler locking |
| 222 | 31297 | 0 | Dipstick, Oil |
| 224 | 29673 | 0 | Gasket, Filler plug |
| 247A | 34316 | 0 | Decal, Name |
| 247 | 34346 | 0 | Decal, Instruction |
| 248 | 30547A | 0 | Contact Assy., Breaker |
| 249 | 30548B | 0 | Condenser |
| 250 | 32255A | 0 | Valve, Seat, Gasket & Spring Assy. (.083 |
| 251 | 631678 | 0 | Carburetor |
| 252 | 610842 | 0 | Magneto, Tecumseh |
| 253 | 590479 | 0 | Starter, Rewind |
| 257 | 33279C | 0 | Gasket Set |



| Ref # | Part Number | Qty | Description |
|-------|-------------|-----|---|
| 64 | 650737 | 0 | Screw, Hex washer hd. taptite, 1/4-20 x 1/2 |
| 75 | 650378 | 0 | Screw |
| 91 | 27793 | 0 | Clip, Conduit |
| 92A | 33578 | 0 | Spring Governor Spec. No. 40933K |
| 92 | 32977 | 0 | Spring, Torsion |
| 93 | 30201A | 0 | Lever, Speed control |
| 94 | 30712 | 0 | Lever, Bellcrank |
| 95A | 650399 | 0 | Screw, Phil. fil. hd. Sems, 10-32 x 5/8 |
| 96 | 30199A | 0 | Bracket, Speed control |
| 97 | 29530 | 0 | Bushing, Lever |
| 98 | 32924 | 0 | Spring, Compression |
| 99 | 650688 | 0 | Screw, Hex hd., 10-32 x 1-5/16" (Drilled |
| 100 | 30312 | 0 | Screw, Hex washer hd. Sems, 10-32 x 1/2 |
| 101 | 33450 | 0 | Nut, Lock |
| 102 | 33372 | 0 | Link, Governor lever-to-bellcrank |
| 103 | 28562 | 0 | Bushing, Lever |
| 104 | 730152 | 0 | Control Assy., Speed |
| 126 | 29774 | 0 | Line, Fuel (Braided 8.25") |
| 126 | 30705 | 0 | Line, Fuel (Braided 16") |
| 126 | 30962 | 0 | Line, Fuel (Braided 32") |
| 164 | 33356 | 0 | Terminal, Ground |
| 165 | 28545 | 0 | Grommet, Plastic |
| 166 | 650643 | 0 | Screw |
| 167 | 30747 | 0 | Clip, Shorting |
| 168 | 16645 | 0 | Lockwasher |
| 255 | 33329 | 0 | Starter Motor Kit (110-120 Volt) |
| 255 | 33329A | 0 | Starter Motor Kit (110-120 Volt) |
| 255 | 33329B | 0 | Starter Motor Kit (110-120 Volt) |
| 255 | 33519 | 0 | Starter Motor Kit (110-120 Volt) |
| 255 | 33519A | 0 | Starter Motor Kit (110-120 Volt) |
| 255 | 33519B | 0 | Starter Motor Kit (110-120 Volt) |
| 256 | 610847 | 0 | Flywheel |



| Ref # | Part Number | Qty | Description |
|-------|-------------|-----|---|
| 62 | 26073 | 0 | Washer, Connecting rod bolt |
| 62 | 650570 | 0 | Washer, Flat |
| 63 | 650713 | 0 | Screw, Hex hd., 5/16-18 x 5/8 |
| 63 | 792028 | 0 | Screw, Hex hd. Sems, 5/16-18 x 7/8 |
| 82 | 26073 | 0 | Washer, Connecting rod bolt |
| 82 | 650570 | 0 | Washer, Flat |
| 83 | 650273 | 0 | Screw |
| 83 | 650713 | 0 | Screw, Hex hd., 5/16-18 x 5/8 |
| 83 | 650788 | 0 | Screw, Hex hd. spin-lock thr'd forming, |
| 83 | 792028 | 0 | Screw, Hex hd. Sems, 5/16-18 x 7/8 |
| 108 | 33381 | 0 | Bracket, Lower fuel tank mtg. |
| 109D | 33383A | 0 | Plate, Upper fuel tank mtg. |
| 110 | 30688 | 0 | Screw, Hex hd. Sems, 1/4-20 x 1/2 |
| 112 | 650561 | 0 | Screw |
| 123 | 33395 | 0 | Fitting, Fuel line |
| 123C | 33679 | 0 | Bushing, Fuel fitting |
| 127 | 26460 | 0 | Clamp, Fuel line |
| 128 | 28819 | 0 | Spring, Fuel line |
| 144A | 28820 | 0 | Screw |
| 145 | 27272 | 0 | Gasket, Air cleaner |
| 146 | 33268 | 0 | Element, Air cleaner |
| 147 | 33269A | 0 | Cover, Air cleaner |
| 148A | 33266 | 0 | Bracket, Air cleaner |
| 148 | 33267 | 0 | Bracket, Air cleaner |
| 149 | 650513 | 0 | Nut, Wing |
| 169 | 33627 | 0 | Bearing, Ball |
| 170 | 33628 | 0 | Washer, Thrust |
| 171 | 31855 | 0 | Retainer, Bearing |
| 172 | 650778 | 0 | Washer, Lock |
| 173 | 650580 | 0 | Nut, Lock |
| 185 | 730127 | 0 | Cleaner Assy., Air (Poly) |
| 185 | 730164 | 0 | Cleaner Assy., Air (Paper) |
| 199C | 391026 | 0 | Muffler |
| 200 | 650729 | 0 | Screw |
| 202 | 30209 | 0 | Elbow, Exhaust (45°) |
| 204 | 730130 | 0 | Muffler Adapter Kit |
| 247B | 31752 | 0 | Decal, Air cleaner |