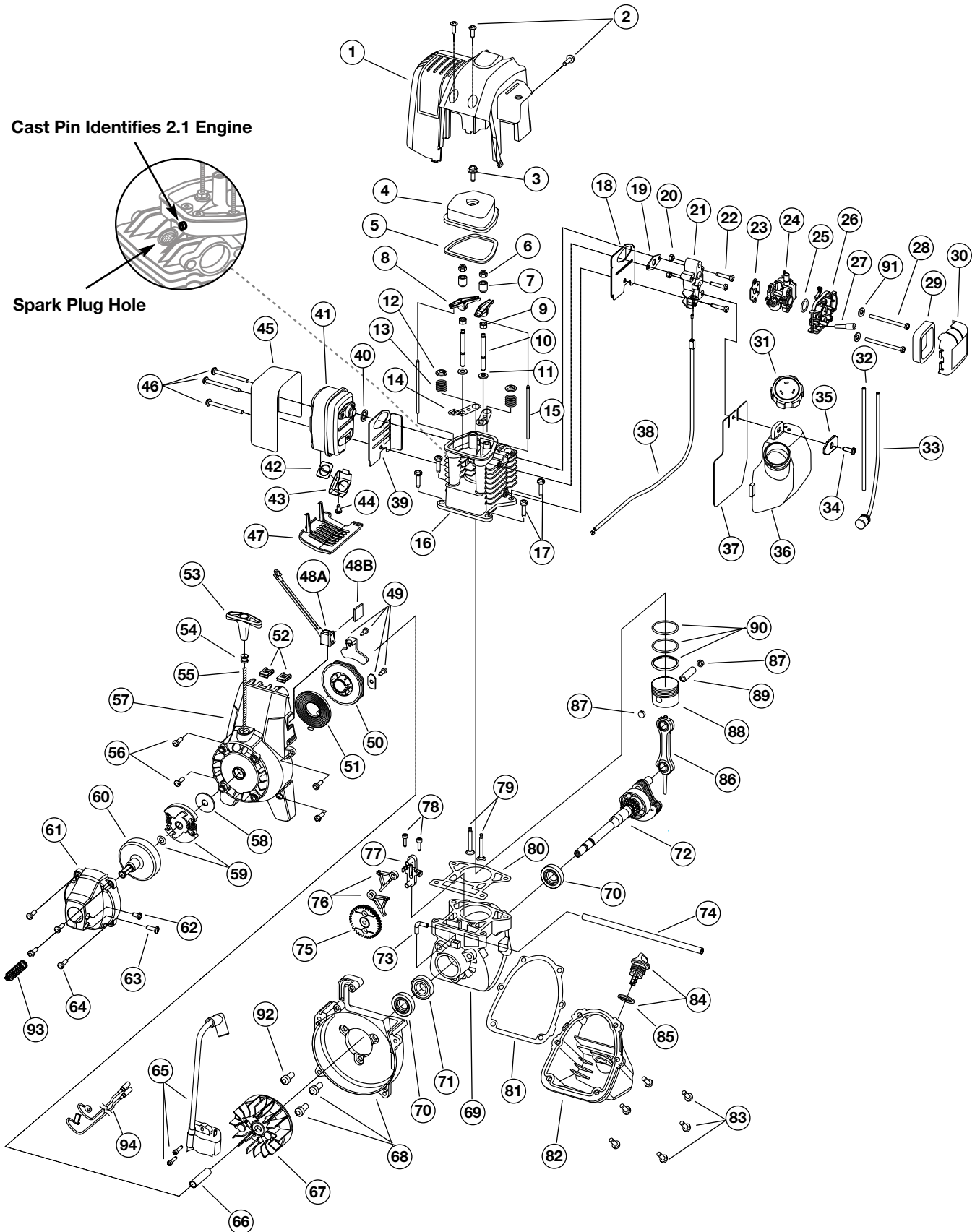


**ENGINE PARTS - MODEL 875r**  
**4-CYCLE GAS TRIMMER**  
(Serial Number 905410855 and greater)

Part Numbers On Following Page

Cast Pin Identifies 2.1 Engine

Spark Plug Hole



## ENGINE PARTS - MODEL 875r

### 4-CYCLE GAS TRIMMER

(Serial Number 905410855 and greater)

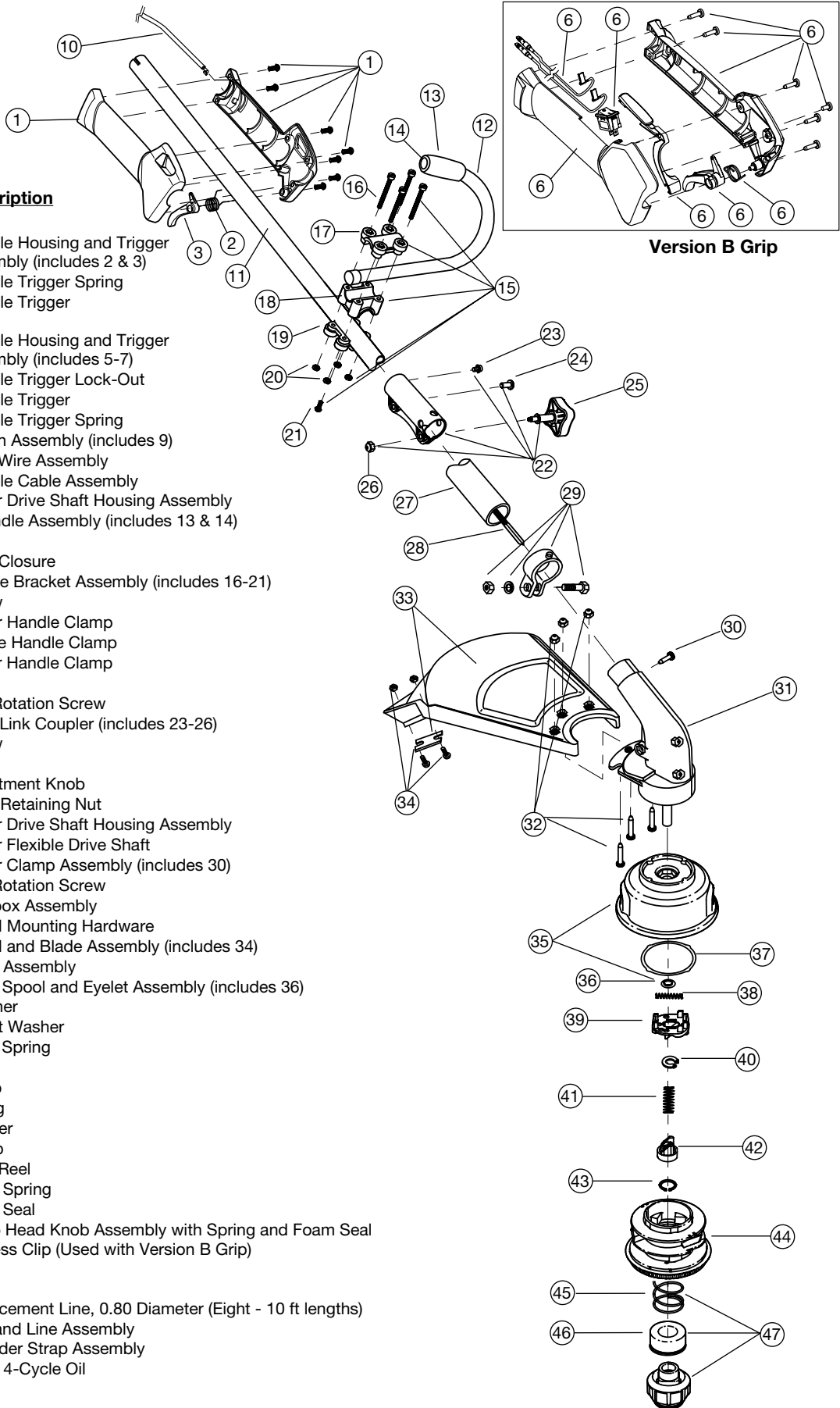
<u>Item</u>	<u>Part No.</u>	<u>Description</u>	<u>Item</u>	<u>Part No.</u>	<u>Description</u>
1	182338	Engine Cover	49	182363	Pulley Retainer Assembly
2	182339	Engine Cover Screws	50	181597	Recoil Pulley
3	181025	Valve Cover Screw	51	613102	Recoil Spring
4	182098	Valve Cover	52	182366	Nut Clip
5	182099	Valve Cover Gasket	53	181079	Pull Handle
6	182340	Rocker Adjustment Nut	54	611061	Rope Guide
7	182101	Rocker Arm Pivot	55	613103	Rope
8	182100	Rocker Arm	56	181020	Starter Housing Screw
9	181034	Hex Nut	57	182367	Starter Housing Assembly (includes 49-56)
10	182341	Rocker Arm Stud	58	182368	Clutch Washer
11	181035	Washer	59	182369	Clutch with Spacer
12	182103	Valve Spring Retainer	60	153592	Clutch Drum
13	181038	Valve Spring	61	182364	Clutch Cover
14	182102	Push Rod Guide	62	145569	Anti-Rotation Screw
15	181033	Push Rod	63	181345	Screw
<b>16</b>	<b>182343</b>	<b>Cylinder Head</b>	64	181080	Clutch Cover Screw
<b>16</b>	<b>182700</b>	<b>Cylinder Head (2.1 Engine)</b>	65	182725	Ignition Module with Screws
17	182344	Cylinder Screw	66	181065	Spacer
18	182345	Intake Baffle	67	181867	Flywheel
19	182346	Carburetor Mount Gasket	68	182371	Shroud Assembly with Screws (includes 93)
20	181034	Nut	69	182376	Crankcase Assembly (includes 70-74)
21	182347	Carburetor Mount (includes 20)	70	610309	Oil Seal
22	182348	Carburetor Mount Screw	71	182372	Bearing
23	182427	Carburetor Gasket	72	182380	Crankshaft
<b>24</b>	<b>182349</b>	<b>Carburetor with Primer</b>	73	182375	90° Elbow
<b>24</b>	<b>182654</b>	<b>Carburetor with Primer (2.1 Engine)</b>	74	182379	Breather Hose
25	181751	O-Ring, Carburetor	<b>75</b>	<b>181015</b>	<b>Cam Gear</b>
26	182350	Air Filter/Choke Assembly (includes 29 & 30)	<b>75</b>	<b>182666</b>	<b>Cam Gear (2.1 Engine)</b>
27	182097	Breather Tube	<b>76</b>	<b>181014</b>	<b>Cam Follower</b>
28	181750	Air Filter Mounting Screw	<b>76</b>	<b>182667</b>	<b>Cam Follower (2.1 Engine)</b>
29	181757	Air Filter	77	181013	Cam Bracket
30	182351	Air Filter Cover	78	181012	Cam Bracket Screw
31	182271	Fuel Cap	79	181040	Valves, Intake and Exhaust
32	182352	Fuel Return Line	80	182374	Cylinder Gasket
33	182353	Fuel Pick-Up Line with Filter	81	181018	Oil Pan Gasket
34	181080	Screw	82	182377	Oil Pan (includes 81 & 83)
35	182354	Washer	83	181020	Oil Pan Screw
36	182355	Fuel Tank Assembly (includes 31-33)	84	182378	Dipstick Assembly (includes 85)
37	182356	Fuel Tank Shield	85	182290	O-Ring
38	182357	Throttle Cable	86	181009	Connecting Rod
39	182358	Muffler Baffle	87	181008	Wrist Pin Button
40	181048	Muffler Gasket	88	182381	Piston
41	182359	Muffler (includes 40, 42-44)	89	181006	Wrist Pin
42	180890	Spark Arrestor Screen	90	181005	Piston Ring Set
43	181045	Screen Cover	91	182409	Washer
44	181046	Screw	92	181861	Screw
45	182360	Muffler Shield	93	612468	Compression Spring
46	182361	Muffler Mounting Screw	94	182688	Coil Wire Assembly
47	182362	Muffler Cover	*	180852	Spark Plug
48A	182365	Switch with Wires (Used with Version A Grip)	*	182382	Short Block Assembly (includes 3-17, 69-90)
48B	182537	Grommet (Used with Version B Grip)	*	182383	Cylinder Assembly (includes 9-11, 14, 16 & 80)
			*	180142	Starter Pawl Repair Kit
			*	182935	Carburetor Repair Kit
			*		Parts not shown

**BOOM AND TRIMMER PARTS - MODEL 875r**

**4-CYCLE GAS TRIMMER**

(Serial Number 905410855 and greater)

**Version A Grip**



**Item Part No. Description**

**Version A Grip**

1	182384	Throttle Housing and Trigger Assembly (includes 2 & 3)
2	610314	Throttle Trigger Spring
3	182385	Throttle Trigger
<b>Version B Grip</b>		
4	182543	Throttle Housing and Trigger Assembly (includes 5-7)
5	182538	Throttle Trigger Lock-Out
6	182689	Throttle Trigger
7	182690	Throttle Trigger Spring
8	182691	Switch Assembly (includes 9)
9	182692	Lead Wire Assembly
10	182357	Throttle Cable Assembly
11	182386	Upper Drive Shaft Housing Assembly
12	180687	J-Handle Assembly (includes 13 & 14)
13	612831	Grip
14	612021	Tube Closure
15	683295	Handle Bracket Assembly (includes 16-21)
16	181811	Screw
17	181812	Upper Handle Clamp
18	181813	Middle Handle Clamp
19	181814	Lower Handle Clamp
20	181815	Nut
21	145569	Anti-Rotation Screw
22	181616	Click-Link Coupler (includes 23-26)
23	182057	Screw
24	181617	Bolt
25	181618	Adjustment Knob
26	181886	Knob Retaining Nut
27	182388	Lower Drive Shaft Housing Assembly
28	683608	Lower Flexible Drive Shaft
29	153597	Lower Clamp Assembly (includes 30)
30	145569	Anti-Rotation Screw
31	181566	Gearbox Assembly
32	180547	Shield Mounting Hardware
33	180548	Shield and Blade Assembly (includes 34)
34	180553	Blade Assembly
35	181457	Outer Spool and Eyelet Assembly (includes 36)
36	181458	Retainer
37	181561	Thrust Washer
38	181459	Small Spring
39	181461	Slider
40	181532	E-Clip
41	181531	Spring
42	181462	Plunger
43	181463	C-Clip
44	181464	Inner Reel
45	181465	Large Spring
46	181467	Foam Seal
47	181468	Bump Head Knob Assembly with Spring and Foam Seal
*	610327	Harness Clip (Used with Version B Grip)

**Optional Accessories**

*	181472	Replacement Line, 0.80 Diameter (Eight - 10 ft lengths)
*	181460	Reel and Line Assembly
*	682075	Shoulder Strap Assembly
*	181786	Ryobi 4-Cycle Oil

\* Items Not Shown