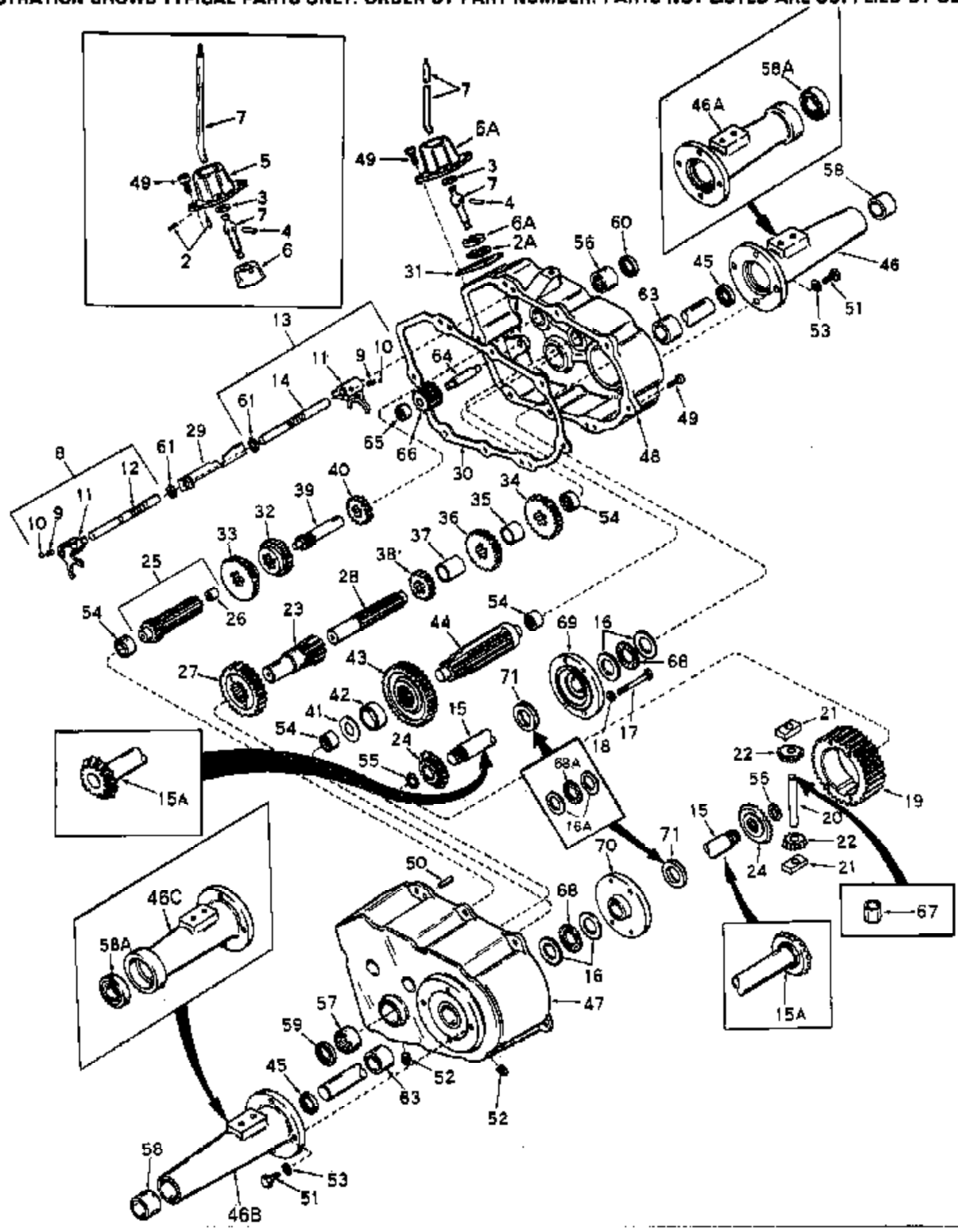


ILLUSTRATION SHOWS TYPICAL PARTS ONLY. ORDER BY PART NUMBER. PARTS NOT LISTED ARE SUPPLIED BY OEM.



Ref #	Part Number	Qty	Description
2	792000		Pin, Groove (Transaxle serial nos. 5318 thru 9370 only on Model 1708)
3	792001		Ring, Quad
4	792049		Pin, Drive
5	784018A		Housing, Shift lever (Transaxle serial nos. 5318 thru 9370 only on Model 1708)
6	784018A		Keeper, Shift lever (Transaxle serial nos. 5318 thru 9370 only on Model 1708)
7	784030		Lever, Shift
8	784056		Rod, Shift (Incl. 9 thru 12 & 61)
9	792003		Spring
10	792004	1700-1710-4 Peerless	Ball, Steel
11	784004		Fork, Shifter
12	784057		Rod, Shifter
13	784054		Rod, Shift (Incl. 9, 10, 11, 14 & 61)
14	784055		Rod, Shifter
15A	774242		Axle Assy. (23.549 long)
16	780045		Washer, Thrust
16A	780045		Washer, Thrust NOTE: Single washer No. 780005 can be used interchangeably in place of 2 No. 780045 washers and 1 No. 780012 thrust bearing in this location only.
17	792002		Screw, 1/4-20 x 2-1/2"
18	792006		Washer, Lock, 1/4"
19	778033A		Gear, Ring (1.500 wide, 31 teeth)
20	786019		Pin, Drive (.497 dia. x 3.357 long)
21	786027		Block, Drive
22	778014		Pinion, Bevel
23	776022		Pinion & Bushing, Brake (3.687 long)
25	776014		Shifter Shaft & Bearing (Incl 26)(4.5 62 long)
26	780018		Bearing
27	778037		Gear, Idler
28	776032		Shaft, Idler (.873 dia. x 5.760 long)
29	784074		Stop, Shifter
30	788026		Gasket, Case & Cover
31	788003		Gasket, Shift lever housing
32	778019		Gear, Shifting ( 20 teeth)
33	778020		Gear, Shifting (26 teeth)
34	778021		Gear, Spur (26 teeth)
35	786014		Spacer (.885 ID x 1.125 OD x .795 lon g
36	778022		Gear, Spur (22 teeth)
37	786015		Spacer (.885 ID x 1.125 OD x 1.22 lon g)
38	778023		Gear, Spur (16 teeth)
39	776027		Shaft, Input (3.990 long)
40	778024		Spur Gear, Input shaft
41	780001		Washer
42	786017		Spacer (1.321 ID x 1.437 OD x .620 lo ng)
43	778036		Gear, Output
44	778041		Pinion. Output
45	788007		Seal, Oil
46B	782017		Housing, LH Axle (Incl. 58)(7.687 lon g)
46	782017		Housing, RH Axle (Incl. 58 )(7.687 lo ng)
47	772031		Cover, Transaxle (Incl. 54, 57 & 63)
48	770023		Case, Transaxle (Incl. 54, 56 & 63 )
49	792007		Screw, 1/4-20 x 3/4"

Ref #	Part Number	Qty	Description
50	786026		Pin, Dowel (.312 dia. x 7.47 long)
50	792008		Pin, Dowel (.250 dia. x .750 long)
51	792021		Screw, 5/16-18 x 3/4"
52	792010		Plug, Pipe
53	792029		Lockwasher, 5/16"
54	780013		Bearing (closed end)
56	780011		Bearing (.750 ID x 1.250 OD x 1.00 long)
57	780055		Bearing (1.125 ID x 1.375 OD x .750 long)
58	780002		Bearing (1.003 ID x 1.253 OD x 1.00 long)
59	788008		Seal, Oil
60	788009		Seal, Oil
61	792017		Ring, Snap
63	780002	1700-1710-4	Bearing (.750 ID x 1.253 OD x 1.00 long)
64	776008	Peerless	Shaft, Reverse idler (2.554 long)
65	786008		Spacer, Reverse idler
66	778016		Idler, Reverse
67	786010		Spacer (.531 ID x .844 OD x 1.594 long)
68	780012		Bearing, Thrust
68A	780012		Bearing, Thrust NOTE: Single washer No. 780005 can be used interchangeably in place of 2 No. 780045 washers and 1 No. 780012 thrust bearing in this location only.
69	774037		Carrier, Differential
70	774036		Carrier, Differential
71	780005		Washer

Page 3 of 3  
 1700-1710-4 Peerless