

MODELS **298 - 2100**

CHAIN BRAKE

A new designed chain brake is introduced in our production.

The chain brake is of "Swed-o-Matic" type and is engaged either manually or by the movement between engine and handle unit.

The chain brake has the following advantages:

- improved function
- shorter stopping time
- parts integrated with other models

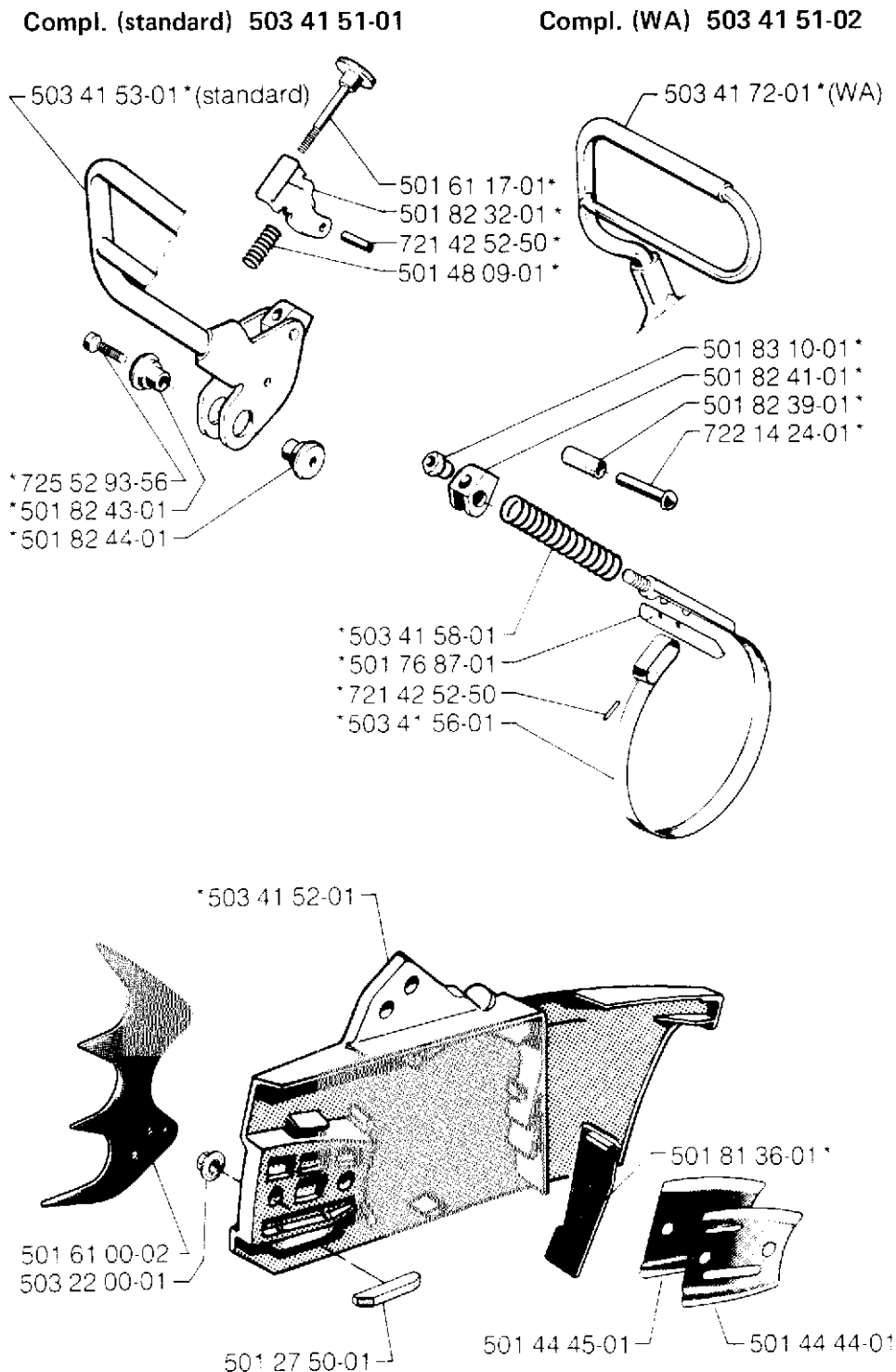
On saws with standard (std) front handle, the brake ref. number 503 41 51-01 is used,
Note! Can only be used together with adjusting screw 501 61 56-03.

On saws with wrap around handle (WA), the brake ref. number 503 41 51-02 is used.

Please turn over

Spare parts

<u>New Ref. No.</u>	<u>Description</u>	<u>Excluded Ref. No.</u>
503 41 51-01	Chain brake compl. std	503 41 34-01
503 41 51-02	Chain brake compl. WA	503 41 34-02
501 61 56-03	Adjusting screw	501 61 56-02
Introduced in production from serial number	298	6481682
	2100	6430762



Components to the old chain brake remain as spare parts.