



Service
Bulletin

B0303018
2003-8

Subject: New Tapered Roller Bearing Spindles

Affected Model Numbers: Zero Turn Riders with 42, 48, 52, 61 and 72 inch mower decks.

Service Information:

For 2004 production all zero turn mowers will come standard with tapered roller bearing style blade spindle assemblies. Listed below are the new part numbers for complete assemblies as well as service parts and appropriate pulleys including stacked pulleys for spindle drive blowers. Complete assemblies include spindle shafts. Due to the precise tolerances, housings and bearings will not be available separately.

Spindle Assembly

- 42"/48" Decks - P/N 539 108772
- 52"/61" Decks - P/N 539 108773
- 72" Deck - P/N 539 108774

Pulleys (for splined shaft)

- 42"/48" Decks - P/N 539 107276
- 52" Decks - P/N 539 107277
- 61" Decks - P/N 539 107278
- 72" Decks - P/N 539 107279

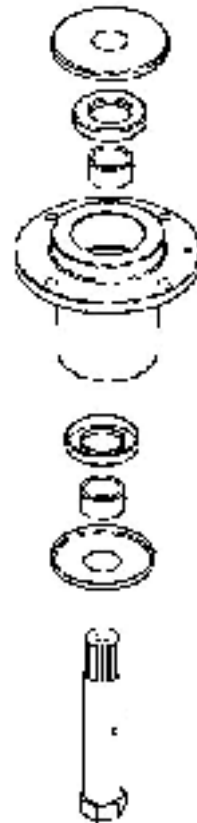
Splined Shaft

- 42"/48" Decks - P/N 539 108759
- 52"/61" Decks - P/N 539 108760
- 72" Deck - P/N 539 108761

Double Pulley (spindle drive blower)

- 42"/48" Decks - P/N 539 108946
- 52" Decks - P/N 539 108947
- 61" Decks - P/N 539 108948

- Shaft seals - P/N 539 108754
- Top & bottom spacer - P/N 539 108758
- Bottom dust cap - P/N 539 108449
- Top dust cap - P/N 539 108450
- Bolt, pulley w/o grease zerk - P/N 539 108766
- Grease zerk fitting - P/N 539 976998



Torque for the 5/8" blade bolt is 90 ft. lbs. (122 N-m), and for the 7/16" pulley bolt, 45 ft. lbs. (61 N-m).