



**Service
Bulletin**

**B0003008
2000-12**

Subject: Cutter Housing Repair/Assembly Procedure.

(All Husqvarna Turf Care Walk Behind and ZT Riding Mowers)

Service Information: Proper repair/assembly procedure for Husqvarna Commercial Mower cutter housing assemblies follow.

1. The housings **MUST** be assembled with **ALL** the correct components oriented as shown on the applicable drawing (see page 2, 3 & 4).
2. In most cases, the bearings can be hand fitted into the housing counter-bores. It is important to note that when hand pressure is insufficient to press the bearings into the counter-bores, the repairman must . . .
 - . . . determine that the bearings and housing bore are clean.
 - . . . insure the bearing is aligned and is being inserted squarely into the bore.

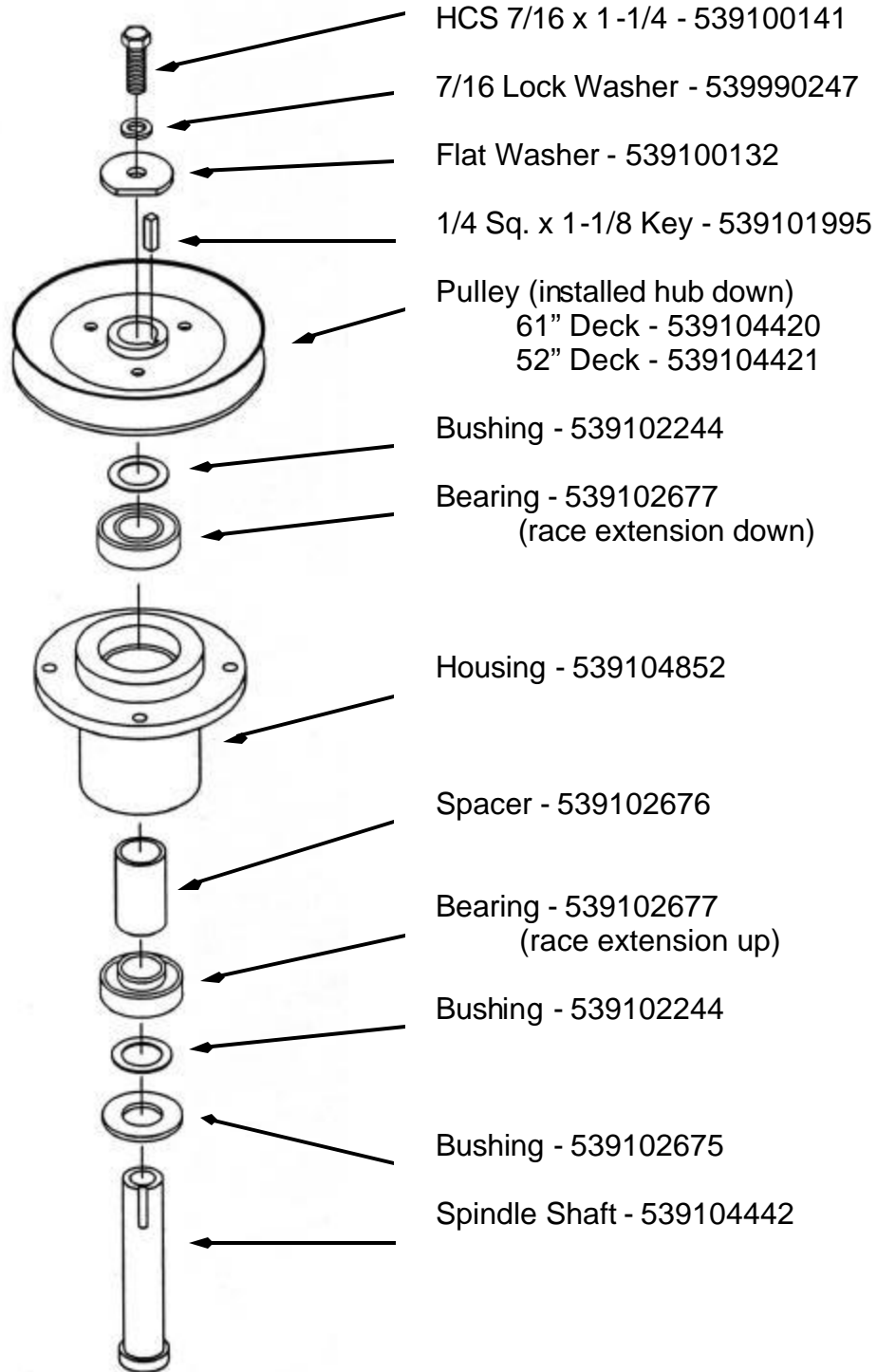
NOTE: If the bearing will not go in by hand, an arbor press can be used. The housing must be supported squarely on the press table, the bearing must be square with the housing bore, and pressure *must only be exerted on the outer race of the bearing*.

NOTE: If an arbor press is not available, very lightly and evenly tap the bearing squarely into the bore, using a small hammer and section of tubing that *contacts the outer race of the bearing*. Any undo pressure on the inner race of the bearing can damage the balls and ball grooves in the bearing.

3. Prior to installing belt sheaves and keys, apply a light coat of anti-seize to that portion of the spindle shaft. Anti-seize should also be applied to the blade bolt threads.
4. The set screws in the sheave should be just tight enough to hold the sheave in place when the assembly bolt is removed.
5. To prevent the spindle shaft from rotating in the bearings, on all cutter housing assemblies, the bolt holding the assembly together must be tight at all times. Torque on the 7/16 inch bolt is 55 ft. lbs. Torque on the 5/8 inch bolt is 125 ft. lbs.

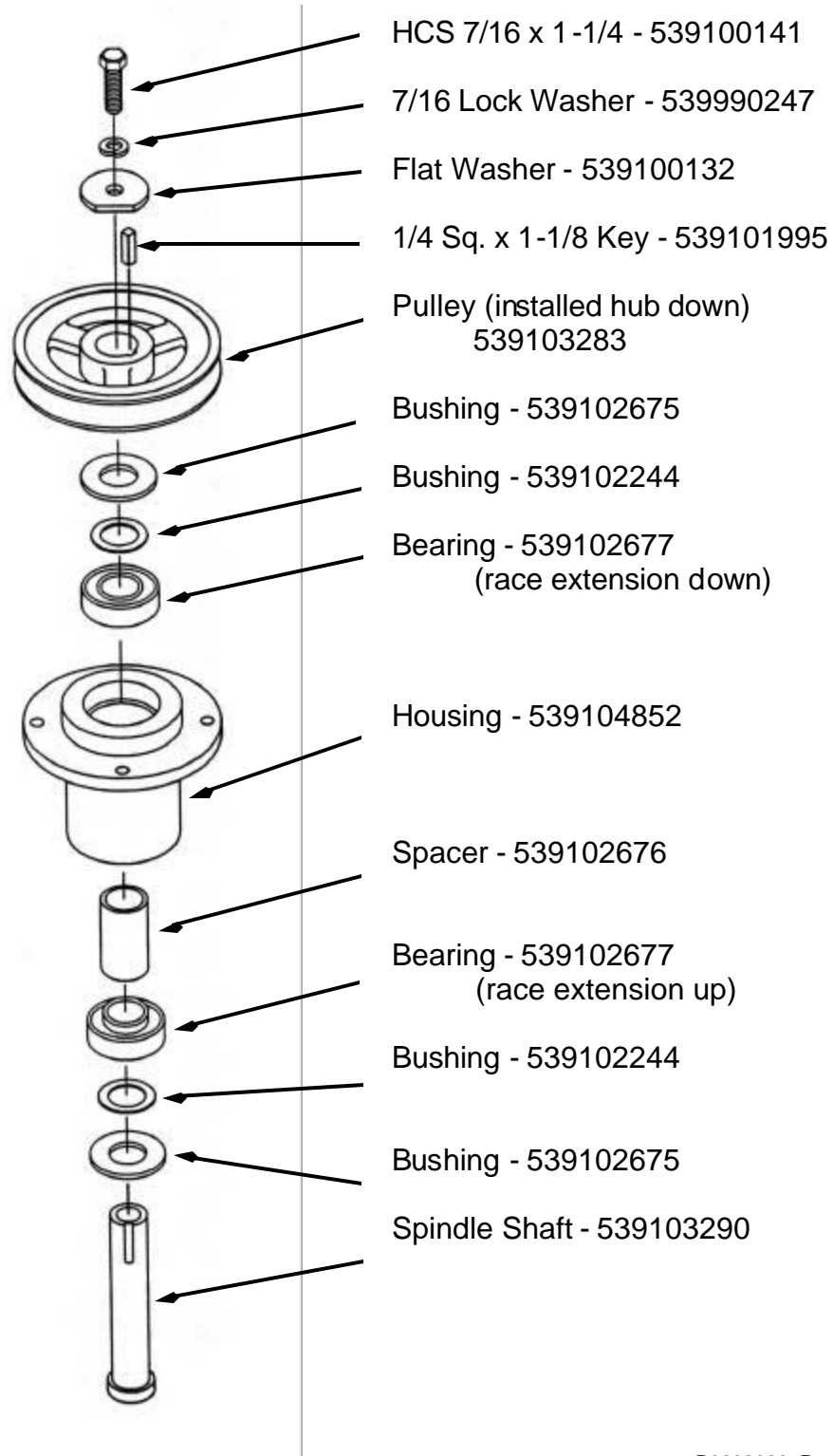
TYPICAL CUTTER HOUSING FOR MODELS

ZTH5221KAA, ZTH5223KAA, ZTH5223KOA, ZTH5223KOLA, ZTH5225KAA, ZTH5225KOA
ZTH6123KOLA, ZTH6125KOA, ZTH6125KAA & ZTH6126KOA



TYPICAL CUTTER HOUSING FOR MODELS

ZTH4217A, ZTH4817A, ZTH4819A, ZTH4821A,
ZTH5223A, ZTH5225A, ZTH6125A,
ZTHKH4818A, ZTHKH4820A, ZTHKW4218A, ZTHKW4818A,
ZTHKWQL4218A & ZTHKWQL4221A



TYPICAL CUTTER HOUSING FOR MODELS

W3212A, W3213A, W3612A, W3613A, W3614A, W4814A, W4815A,
WH3614A, WH3615A, WH4817A & WH4818A

