



SERVICE 		4
		B0001001

English 1 (2)

SB, 372, 362, Carburettor heater, 2000-01

Carburettor heater

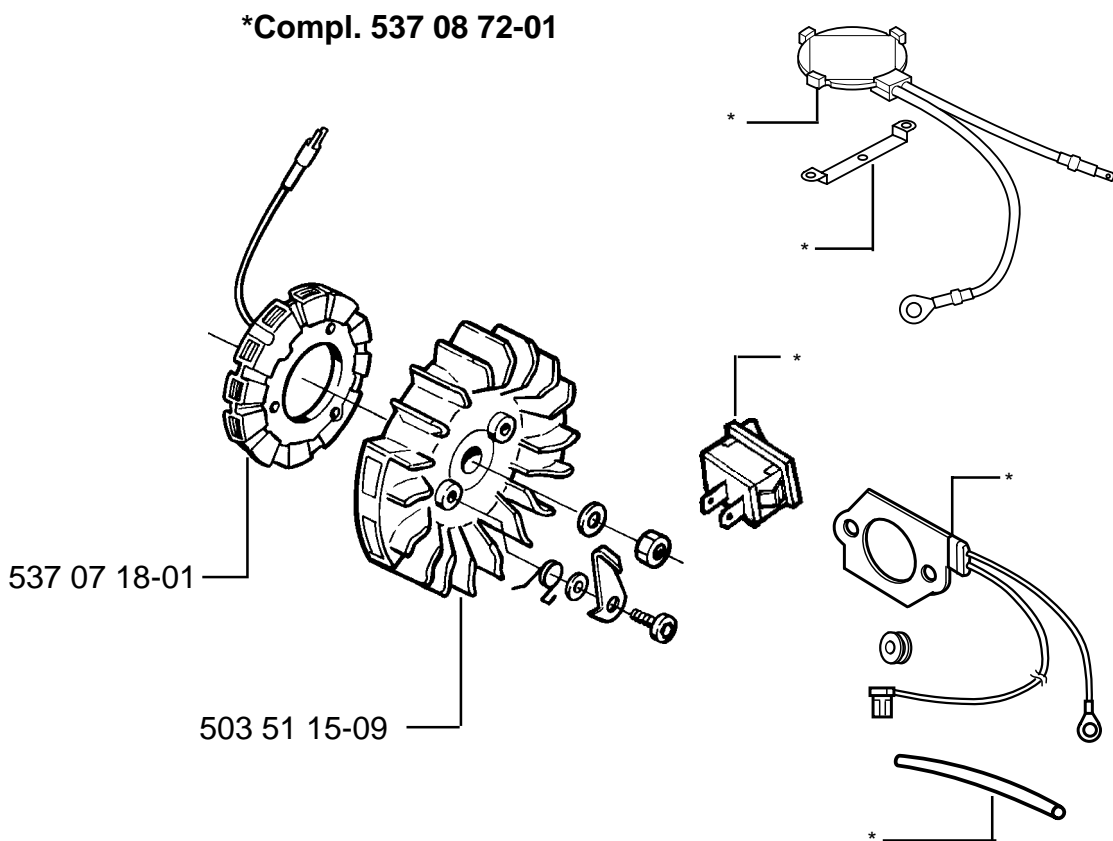
All saws with the XPG designation are equipped with an electric carburettor heater. A thermostat or a three-way switch controls the carburettor heater. Thermostatic carburettor heaters are only standard equipment on the following models

372 XPG	9657032
362 XPG	9656432

Thermostatic control



A thermostat mounted on the carburettor controls the carburettor heater. The switch mounted on the saw only controls the hand grip heater.

NOTE! Can only be used with specially designed flywheel/generator.



Introduced into production from serial number: 371 XPG 993701031



SERVICE 		4
		B0000001

English 2 (2)

Three-way switch

A three-way switch controls the carburettor heater and hand grip heater. Either the carburettor heater or the hand grip heater is switched on depending on the position of the switch.

Applications

The carburettor heater should be used in the following temperature range:

±0°C or colder. In conditions of high humidity icing of the carburettor can occur earlier than expected.

The carburettor heater only heats the carburettor when the three-way switch is set to "II".

NOTE!

The carburettor reaches its maximum temperature after about 3 minutes of cutting. If the switch is left on for too long the carburettor will overheat and this could cause operating problems or starting difficulties.

The kit contains the following parts:

- | | | |
|------------------|--------------|------------------|
| - heater element | — | |
| - switch | 503 55 49-01 | Kit 537 01 59-01 |
| - grommet | 501 43 00-01 | |
| -instructions | 101 89 61-20 | |

