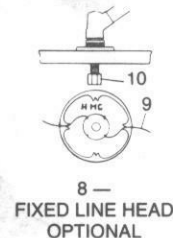
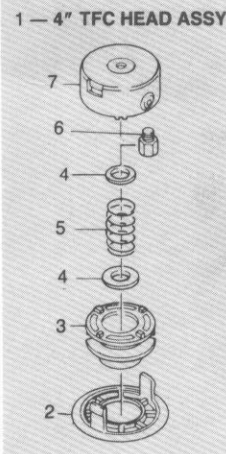


The Green Machine®

HMC, P.O. Box 560, Long Beach, CA 90801-0560
20710 So. Alameda Street, Long Beach, CA 90810

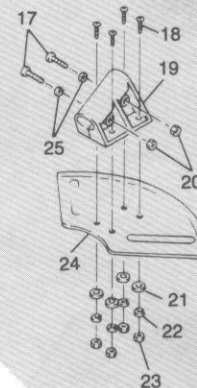
EXPLODED PARTS VIEW AND NUMERICAL PARTS LIST FOR MODEL 2800

ITEM	PART NUMBER	DESCRIPTION
1	20195	4" TFC HEAD ASSY
2	185205	CAP
3	185206	SPOOL
4	166903	PLATE, SPRING
5	167901	SPRING
6	226701	ARBOR
7	180302	HEAD BODY
8	25250	FIXED LINE HEAD ASSY
9	31105	GREEN LINE .080
10	325205	ARBOR BOLT
11	31095	50 FT .095 GREEN LINE
12	31007	GREEN LINE .095 1 LB.
13	31006	GREEN LINE .095 3 LB.
14		
15		
16	24700	BLADE GUARD ASSY
17	011417	SCREW
18	011418	SCREW
19	245201	BLADE GUARD BRACKET
20	051012	NUT
21	041004	WASHER
22	041101	WASHER
23	051002	NUT
24	247001	GUARD
25	041102	WASHER
26		
27		
28	280310	GEARCASE ASSY
29	070027	BEARING
30	190609	GEAR SET KIT
31	226706	SHAFT, GEAR
32	070002	BEARING
33	060020	RING
34	070026	BEARING
35	300080	BOLT
36	040007	WASHER
37	041003	WASHER
38	300075	HOLDER B
39	300070	HOLDER A
40	226705	COLLAR
41	280321	HOUSING SET
42	236713	GEARCASE LH
43	236712	GEARCASE RH
44	286710	FITTING ZERK
45	011310	SCREW-SELF TAPPING
46	011309	SCREW-SELF TAPPING
47		
48		
49	92130	SAW BLADE
50	92140	BRUSH BLADE
51	94110	BLADE COVER
52		
53	280603	STD TOOL KIT
54	190104	SCREW DRIVER
55	309928	SOCKET
56	300190	SPANNER
57	190105	SPANNER
58	309925	TOOL BAG
59		
60	257602	FLYWHEEL PULLER
61	309951	PISTON PIN PUSHER
62	309732	SPANNER
63	309734	ADJUSTING TOOL
64		
65		
66		
67		
68		
69		
70		

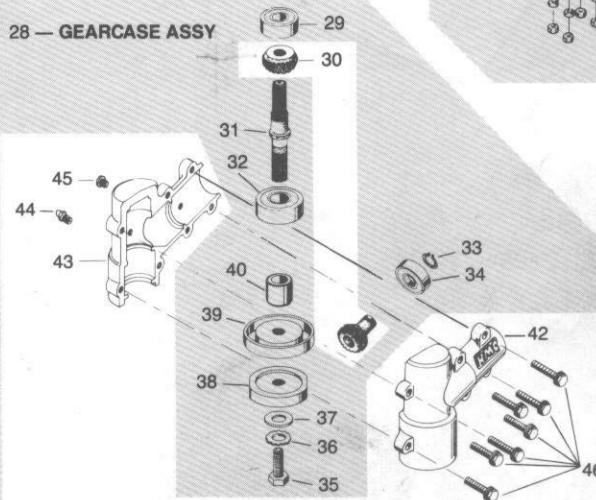


- 11 — 0.095 LINE ON SPOOL
- 12 — 1-LB. 0.095 LINE
- 13 — 3-LB. 0.095 LINE

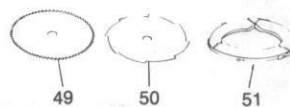
16 — BLADE GUARD ASSY



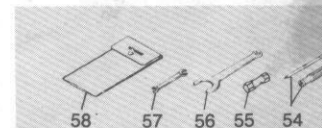
28 — GEARCASE ASSY



41 — HOUSING SET



BLADE GUARD MUST BE INSTALLED WHENEVER METAL BLADES ARE USED



53 — STD. TOOL KIT



60 FLYWHEEL PULLER (OPTIONAL)



61 PISTON PIN PUSHER (OPTIONAL)



62 FLYWHEEL HOLDING WRENCH (OPTIONAL)



63 CARB. LEVER ADJUSTING TOOL (OPTIONAL)



20710 S. ALAMEDA ST., LONG BEACH, CA 90810 • (213) 603-9888 • TELEX 696396
P.O. BOX 560, LONG BEACH, CALIFORNIA 90801-0560 • FAX (213) 635-3526

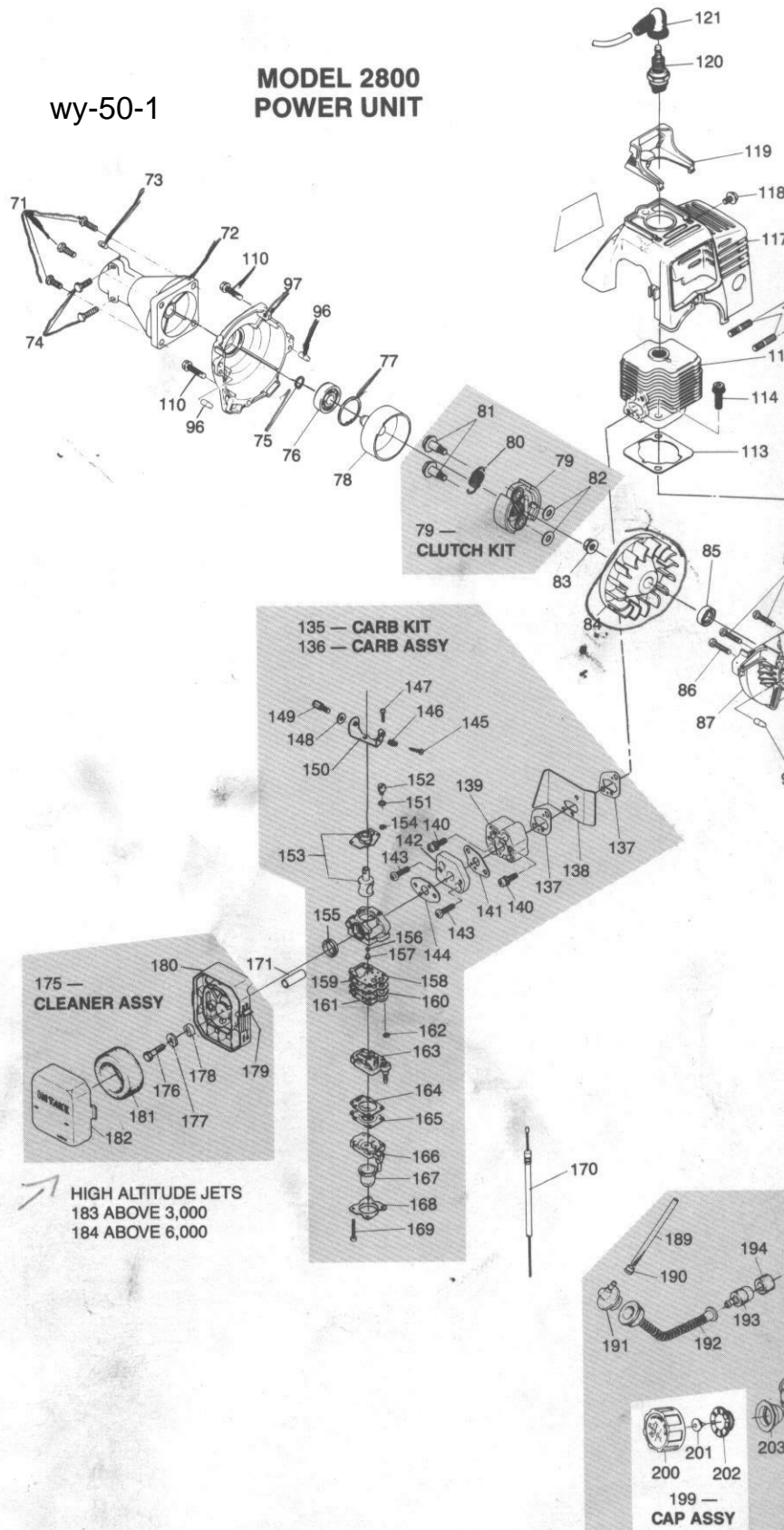
www.mymowerparts.com

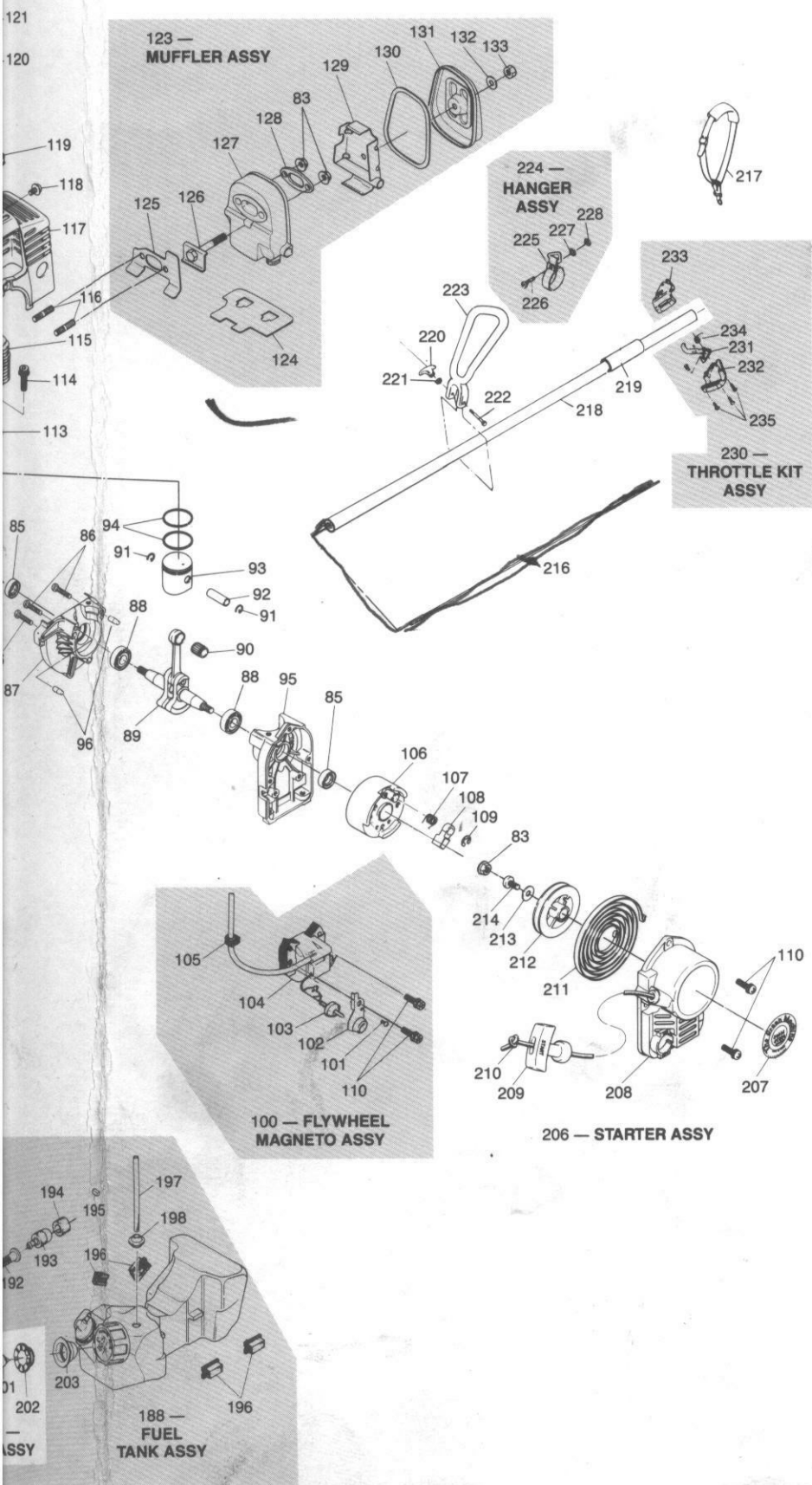
GM844 7/88

ITEM	PART NUMBER	DESCRIPTION
71	030005	BOLT & WASHER
72	286111	CASE, CLUTCH
73	030010	SHIM
74	030008	BOLT & WASHER
75	062101	SNAP RING
76	070009	BEARING, BALL
77	060015	SNAP RING
78	286711	CLUTCH DRUM
79	190111	CLUTCH SHOE KIT
80	190026	CLUTCH SPRING
81	012448	SCREW
82	040010	WASHER
83	052801	NUT, CONICAL SPG.
84	286101	FAN
85	081502	OIL SEAL
86	002805	SCREW
87	286702	CASE, DRIVE
88	071009	BEARING, BALL
89	286703	CRANKSHAFT ASSY
90	071410	BEARING, NEEDLE
91	062803	CLIP, PISTON PIN
92	286105	PIN, PISTON
93	286706	PISTON
94	062804	RING, TOP
95	287301	CASE, STARTER
96	288204	DOWEL PIN
97	286112	CASE-COVER
98		
99		
100	280317	FLYWHEEL/MAGNETO ASSY
101	002807	SCREW
102	286103	BRACKET
103	283101	SWITCH, STOP
104	284001	COIL, IGNITION
105	285501	GROMMET
106	286707	ROTOR
107	287902	SPRING, RETURN
108	286106	RATCHET
109	062805	SNAP RING
110	032803	BOLT & WASHER
111		
112		
113	287403	GASKET, CYLINDER
114	032805	BOLT, FLANGE
115	286705	CYLINDER
116	032804	BOLT, STUD
117	286704	COVER, TOP
118	002808	SCREW & WASHER
119	286104	GUARD, SPARK PLUG
120	190036	SPARK PLUG (NGK BM6A)
121	285502	CAP, PLUG
122		
123	280318	MUFFLER ASSY
124	287406	GASKET
125	287404	GASKET, MUFFLER
126	032806	BOLT, FLANGE
127	286708	BODY, MUFFLER
128	286108	PLATE
129	286107	PLATE
130	287405	GASKET, MUFFLER SEAL
131	286109	LID, MUFFLER
132	042803	WASHER, SEAL
133	052803	NUT
134		
135	287202	CARB. KIT
136	287201	CARB. ASSY
137	287402	GASKET, INSULATOR
138	287206	PLATE
139	285201	INSULATOR
140	002804	SCREW & WASHER
141	287401	GASKET, CARBURETOR
142	287228	SPACER
143	002810	SCREW
144	287410	GASKET CARB.
145	247213	SCREW, IDLE ADJUST.
146	247214	SPRING, IDLE ADJUST
147	307209	SCREW
148	247207	NUT, CABLE ADJUSTER
149	247206	ADJUSTER, CABLE
150	247201	BRACKET, IDLE ADJUST.
151	247205	PLUG
152	287205	SWIVEL
153	287202	VALVE, THROTTLE
154	247202	RING, SWIVEL

wy-50-1

**MODEL 2800
POWER UNIT**





ITEM	PART NUMBER	DESCRIPTION
155	247210	PACKING
156	247211	RING
157	287203	MAIN JET
158	307206	GASKET, PUMP
159	307207	DIAPHRAGM
160	257206	GASKET
161	257204	GASKET
162	287204	SCREEN, INLET
163	287205	BODY ASSY
164	247405	GASKET, DIAPHRAGM
165	170121	DIAPHRAGM
166	287207	BODY, PRIMER PUMP
167	247223	PUMP, PRIMER
168	247224	COVER, PRIMER PUMP
169	167212	SCREW, COVER
170	351102	THROTTLE CABLE
171	247209	SLEEVE
172		
173		
174		
175	240308	CLEANER ASSY
176	002811	SCREW & WASHER
177	040066	WASHER
178	248205	SLEEVE
179	248206	LEVER, CHOKE
180	248201	BODY CLEANER
181	248202	FILTER
182	248203	COVER, CLEANER
183	257208	HIGH ALTITUDE JET
184	257207	HIGH ALTITUDE JET
185		
186		
187		
188	280303	FUEL TANK ASSY
189	285402	TUBE, FUEL
190	062806	CLIP
191	285406	JOINT
192	285403	HOSE, SUCTION
193	280304	FILTER, FUEL
194	282806	FILTER
195	282807	SPONGE
196	282808	PAD
197	285401	TUBE, FUEL
198	285407	BUSHING
199	280302	TANK CAP ASSY
200	285405	CAP, TANK
201	282809	VALVE, BREATHER
202	282810	HOLDER
203	287409	GASKET
204		
205		
206	287302	STARTER ASSY
207	289502	LABEL NAME
208	287307	CASE, STARTER
209	287306	KNOB, STARTER
210	287305	ROPE, STARTER
211	287304	SPRING, SPIRAL
212	287303	REEL
213	042804	WASHER
214	002812	SCREW
215		
216	287801	CABLE, FLEX
217	300180	HARNES
218	280341	TUBE ASSY
219	300038	FOAM GRIP
220	190120	KNOB
221	040016	WASHER
222	257606	BOLT
223	235209	ASSIST HANDLE
224	300245	HANGER ASSY
225	300150	HANGER
226	010002	SCREW
227	041101	WASHER
228	050003	NUT
229		
230	280340	THROTTLE HOUSING KIT
231	235214	THROTTLE LEVER
232	285203	CLAMP L.H.
233	285204	CLAMP R.H.
234	167101	SPRING THROTTLE TRIGGER
235	201044	SCREW