

The Green Machine[®]

ASSEMBLY AND OPERATING INSTRUCTIONS

YARD AND PATIO BLOWER

**MODEL 600 ELECTRIC
MODEL 660 ELECTRIC**



20710 SOUTH ALAMEDA • LONG BEACH, CALIFORNIA • PHONE (213) 603-9888 • TELEX 696396

(GM569)

www.mymowerparts.com



Your **GREEN MACHINE** is a precision manufactured piece of equipment built for years of trouble free service when you follow the operating and service instructions found in this manual.

MODEL 600 BOX CONTENTS:

- A) 1 ea. Model 600 Yard and Patio Blower
- B) 2 ea. 206003 Extension Tube
- C) 1 ea. 206008 Discharge Nozzle
- D) 1 ea. GM569 Assembly and Operating Instructions

MODEL 660 BOX CONTENTS:

- A) 1 ea. Model 660 Yard and Patio Blower
- B) 2 ea. 208020 Extension Tube
- C) 1 ea. 208021 Discharge Nozzle
- D) 1 ea. GM569 Assembly and Operating Instructions



WARNING
WEAR SAFETY GOGGLES
KEEP BYSTANDERS 20 FT. AWAY AT ALL TIMES

OPERATOR'S MANUAL

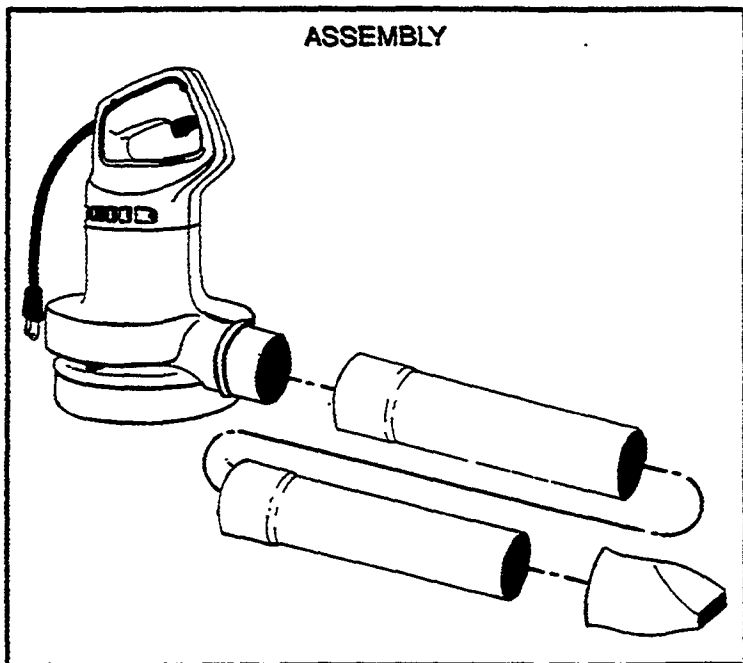
Safety Instructions

1. Read and understand Operator's Manual before using your **GREEN MACHINE**. Be thoroughly familiar with proper use of the Blower.
2. Never allow children to operate the Blower. It is not a toy. Never allow adults to operate unit without first reading the Operator's Manual.
3. Always wear safety glasses or other suitable eye protection.
4. Do not use in rain.
5. Keep the area of operation clear of all persons, particularly small children and pets.
6. Dress Properly — Do not wear loose clothing or jewelry. They can be caught in moving parts. Always wear substantial footwear and long pants.
7. Use the right appliance — Do not use the appliance for any job except that for which it is intended.
8. To prevent shock hazard use only with an extension cord suitable for outdoor use. You may obtain extension cords from your **GREEN MACHINE** retailer.
9. Extension cord — To prevent disconnection of the power supply cord from the extension cord during operation, properly connect cord as shown.
10. Avoid Unintentional Starting — Do not allow Blower to run unattended.
11. Don't abuse cord — Never yank cord to disconnect from receptacle. Keep cord away from heat, oil and sharp edges. Replace damaged cords.
12. Always be sure of your footing; keep a firm hold on the handle and walk, never run.
13. Stop the motor and unplug the supply cord whenever you leave the Blower, or when making any repairs or inspections.
14. When not in use, store your Blower in a dry place out of the reach of children.
15. Keep all fasteners tight to be sure the Blower is in safe working condition. Follow maintenance instructions provided in this manual.
16. Never operate without proper guards or protective safety devices in place.
17. If the Blower should start to vibrate abnormally, stop the motor and check immediately for the cause. Vibration is generally a warning of trouble.
18. Do not operate your **GREEN MACHINE** after it has been dropped or damaged. Return it to your nearest authorized service dealer for inspection and repair.

ASSEMBLY INSTRUCTIONS

MODEL 600

MODEL 660

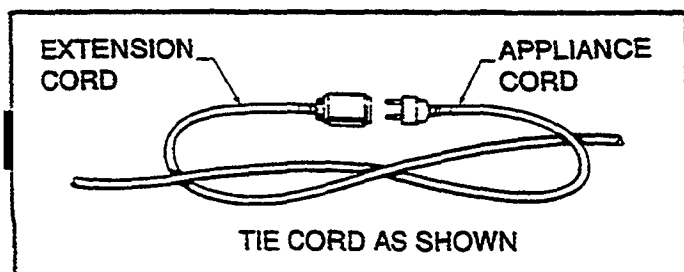


Check to see that all components of your Green Machine Blower are included. If not, contact your supplying retailer.

- Slide one of the extension tubes onto the Blower discharge. Push firmly into place by twisting the tube slightly.
- Slide the second tube onto the first.
- Install the nozzle so that it will be parallel to the ground when the Blower is in use.
- The proper extension cord is a requirement for safe and efficient use of your Green Machine Blower. Use only UL approved outdoor extension cord with maximum length of 100 ft. (minimum 16 gauge)

OPERATING INSTRUCTIONS

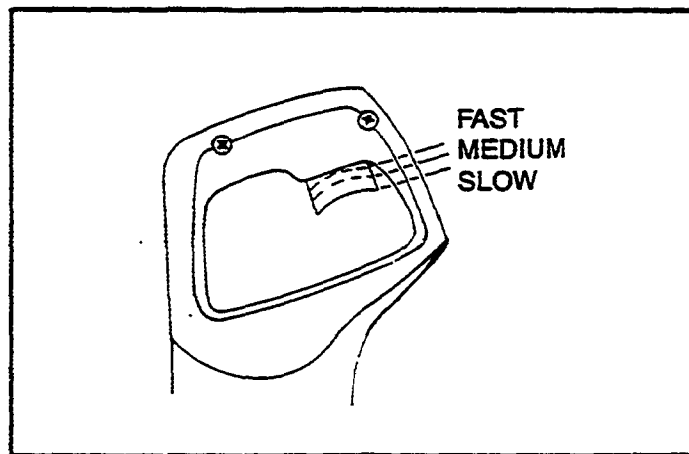
- To prevent extension cord from pulling out from appliance cord, tie cords as shown.



- Plug the extension cord into any wall receptacle. Hold your Blower off the ground and pull the trigger.
- Your Green Machine Blower produces a strong air blast when operated at full speed. Also, it is equipped with a variable speed switch. So that you may become accustomed to the operation of your blower, pull the trigger gently a few times before performing any work. You will find that the motor starts slowly and increases in speed as the trigger is pulled to the full speed position.

CAUTION: Do not direct air blast in the direction of bystanders.

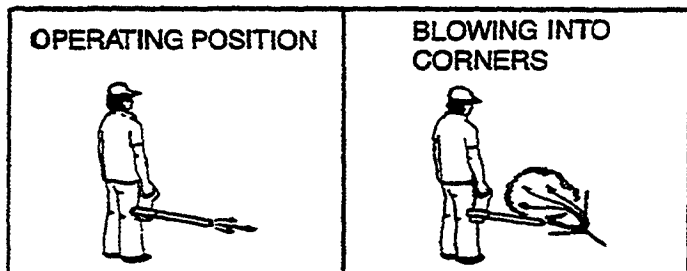
- The correct operating position is to hold the Blower in either hand at arms length at your side. Your Blower has been designed with the necessary angle to direct the air blast toward the ground in front of you.
- This comfort design feature is a Green Machine exclusive available only on Green Machine products.



IMPORTANT OPERATION HINTS

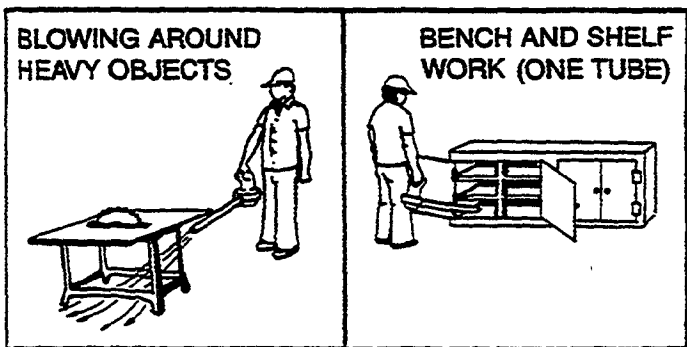
- In many uses it is not necessary to use all the "air power" of your Blower and in fact is not advisable in some applications.
- When using the Blower in tight quarters such as corners of patios and garages, the full speed position is not usually required. A somewhat slower speed will do the same job effectively without the turbulence created by full speed operation. This turbulence only carries the blown material back into the corner and produces floating dust.

- The efficient use of the variable speed of your Blower will allow you to perform many sweeping tasks that were before very difficult and time consuming by conventional brooms and sweeping devices.
- You will find that it no longer is necessary to move objects to effectively clean around them. A simple blast from your Blower will move debris from those difficult to reach and often impossible to clean areas.



- In some cases, it is more advisable to use a shorter discharge tube to allow work in close areas. In uses such as bench top blowing or shelf work, only one tube is required making your Blower much more maneuverable and lighter weight.

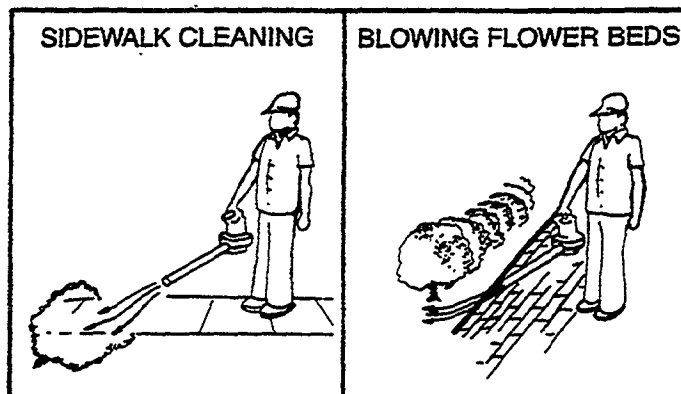
CAUTION:
Never operate Blower while resting on a flat surface.



- The many uses for your Green Machine Blower can be left to your own imagination but a few of the most common ones are:

- Cleaning grass from walkways after mowing or edging
- Sweeping or drying patios
- Cleaning driveways
- Sweeping out garages and workshops
- Blowing out flower beds
- Leaf control in autumn
- Cobweb removal
- Overhead sweeping

- Light snow removal
- Dusting of hard to clean equipment
- Cleaning shelves and workbenches and many more uses you will discover for yourself



!
WARNING
WEAR SAFETY GOGGLES
KEEP BYSTANDERS 20 FT. AWAY AT ALL TIMES

GENERAL MAINTENANCE

- Be sure your Green Machine Yard Blower is unplugged before attempting any maintenance or repair.
- Make certain nothing is obstructing the air intake screen before and after each operation.
- Keep the exterior of your Green Machine clean by wiping with a damp cloth. Never use a hose or petroleum solution for cleaning this unit.
- Check and tighten all fasteners. If any part is damaged, repair or replace it.
- Your blower is basically a maintenance free tool, however if service is required contact your nearest Green Machine dealer for assistance.

DOUBLE INSULATION

Double Insulation is a concept in safety, replacing the standard grounded supply system, in electric power tools. The construction of a double insulated tool affords compatible protection to a properly grounded tool without the necessity for using a grounded conductor. The double insulation system eliminates the need for the usual three wire grounded power cord and grounded supply system. Wherever there is electric current in the tool there are two complete sets of insulation to protect the user. All exposed metal parts are isolated from the internal metal motor components with protecting insulation. The lead wires, switch, etc. with their functional insulation have the added protection of non conductive sleeving or housings to complete the double insulation system.

DOUBLE INSULATION (CONT.)

SERVICING OF A TOOL WITH DOUBLE INSULATION REQUIRES EXTREME CARE AND KNOWLEDGE OF THE SYSTEM AND SHOULD BE PERFORMED ONLY BY A QUALIFIED SERVICE TECHNICIAN. FOR SERVICE WE SUGGEST YOU RETURN THE TOOL TO YOUR NEAREST DEALER FOR REPAIR WHICH WILL BE DONE WITH ORIGINAL FACTORY REPLACEMENT PARTS.

WARRANTY SERVICE

A copy of the one year limited warranty covering your Green Machine is presented on the warranty card included with this manual. Should you feel your Green Machine Blower is defective and wish to have it repaired or replaced in accordance with this warranty, please follow one of the procedures below.

Return the Blower to the dealer who sold it to you. Remember to have a copy of your original sales slip or other evidence of purchase date along with you. The retailer will inspect the unit, advise you whether the product is defective, and if so make arrangements for a replacement blower or appropriate service.

— OR —

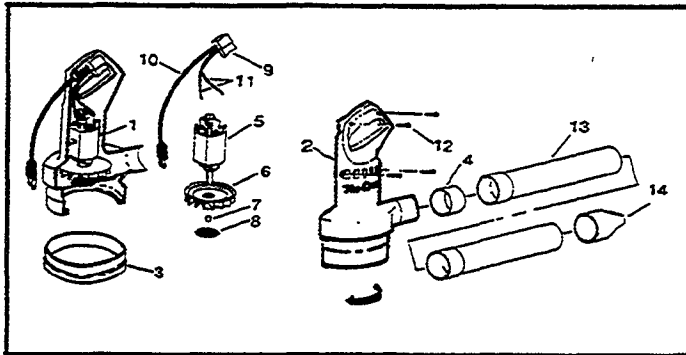
Return your Blower, postage prepaid directly to our HMC Service Dept. for repair or replacement. Please include a copy of your original sales slip or other evidence of purchase date and brief description of the difficulty.

If your Blower is defective and within warranty period, it will be repaired or replaced and returned to you postage paid.

If your Blower is not defective but does require servicing, we will send you a postcard describing the needed repair and an estimate of the repair costs and return postage. If you wish us to make the repair, please sign the card and return it to us with a check or money order for the repairs and cost of return postage. If you do not wish the Blower to be repaired, let us know and we will return the Blower C.O.D.

Non-warranty service may be obtained through an authorized Green Machine dealer or distributor.

PARTS LIST



MODEL 600 ELECTRIC BLOWER

ITEM	PART NO.	DESCRIPTION	QTY.
1	GM 96060 1	HOUSING SET	1
3	GM 20600 7	RING INLET	1
4	GM 20600 6	RING DISCHARGE	1
5	GM 20107 7	MOTOR	1
6	GM 20600 1	IMPELLER	1
7	GM 20600 2	SET SCREW	1
8	GM 20600 9	SCREEN	1
9	GM 20603 7	SWITCH	1
10	GM 12340 2	SUPPLY CORD	1
11	GM 20601 3	LEAD WIRE	2
12	GM 20104 4	SCREW	4
13	GM 20600 3	BLOWER TUBE	2
14	GM 20600 8	NOZZLE	1

MODEL 660 ELECTRIC BLOWER

ITEM	PART NO.	DESCRIPTION	QTY.
1	GM 96060 4	HOUSING SET	1
3	GM 20600 7	RING INLET	1
4	GM 20801 4	RING DISCHARGE	1
5	GM 66380 1	MOTOR	1
6	GM 20801 1	IMPELLER	1
8	GM 20802 5	SCREEN	1
9	GM 20603 7	SWITCH	1
10	GM 12340 2	SUPPLY CORD	1
12	GM 20104 4	SCREW	6
13	GM 20802 0	TUBE	2
14	GM 20802 1	NOZZLE	1
15	GM 20802 7	SCREEN DISCHARGE	1
16	GM 05101 0	NUT, MOTOR	1
17	GM 04100 3	WASHER, FLAT	1

(* NOT SHOWN)

HMC — THE GREEN MACHINE®
ONE YEAR LIMITED WARRANTY

HMC warrants your HMC Product to be free from defects in material and workmanship under normal residential use for a period of one (1) year from date of purchase. This warranty expires in (45) days if the product is used commercially.

Should your HMC Product fail within the Warranty period due to defective parts or workmanship, just return the unit transportation prepaid to either (1) the retailer who sold it to you or (2) directly to the HMC Factory Service Center, 20710 South Alameda Street, Long Beach, California 90810, U.S.A., or (3) to your regional distributor, whose address is available from HMC or your retailer. HMC will, at its option, repair or replace the unit at no charge. HMC assumes no obligation to pay the registered owner a cash refund under any circumstances.

Please return the enclosed warranty card within 10 days after purchase. If we do not have the card on file we will require other proof of purchase before completing the repairs. This warranty only extends to the original purchaser of the product.

This warranty does not apply if the product has been misused or used contrary to the instruction manual, or if it has been repaired or altered by anyone other than an HMC authorized service center.

This warranty applies only to parts or components which are defective and does not cover repairs necessary due to normal wear, misuse, accidents, or lack of proper maintenance. Regular, routine maintenance of the unit to keep it in proper operating condition is the responsibility of the owner.

HMC IS NOT LIABLE FOR INDIRECT OR CONSEQUENTIAL DAMAGES IN CONNECTION WITH THE USE OF THE PRODUCT INCLUDING ANY COST OF PROVIDING SUBSTITUTE EQUIPMENT DURING PERIODS OF MALFUNCTION.

Some states of the U.S.A. do not allow the exclusion of incidental or consequential damages, so the above exclusion may not apply to you.

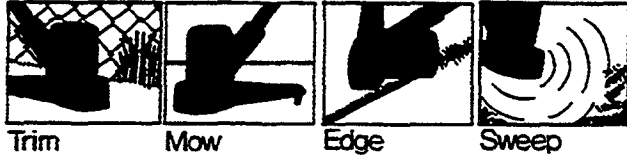
Your HMC Product will perform as indicated in the instruction manual and in the accompanying literature. Your retailer may have sold you the machine with a promise that it would handle a particular task. You may return the machine to him if it does not perform this specific task, but we cannot be responsible for promises which are beyond the scope of the above instruction manual or literature.

THERE ARE NO EXPRESS WARRANTIES OTHER THAN AS CONTAINED IN THIS STATEMENT, AND ANY IMPLIED WARRANTIES SHALL EXPIRE 90 DAYS AFTER DATE OF PURCHASE. Some states of the U.S.A. do not allow limitations on how long an implied warranty lasts, so the above limitations may not apply to you.

This warranty gives you specific legal rights and you may also have other rights which vary from state to state or from country to country.

THINK GREEN!

The best of the string trimmers



Hang up hole and extension cord lock.

Exclusive ComforTrim™
Mid-handle—tilted 45°
to eliminate operator strain.

Handle quickly rotates
180° for convenient
edging.

Powerful, heavy-duty
permanent magnet motor.

Exclusive TFC™ Tap-for
cord-automatic head.
Need more cord?
Just tap lightly
while head continues to run
at full cutting speed.

Exclusive ComforTrim™ pre-tilted
motor-provides power cutting
angle without stoop or strain.

Exclusive Green Machine
“melt away” automatic
cut off system.

Exclusive high performance
Green Line™ cutting cord.

Two cords for less vibration
and better cutting.



approved

Single-piece tube allows
easy adjustment of mid-handle
for varying operator height.

**MODEL 1500
DELUXE
ELECTRIC TRIMMER
TAP-FOR-CORD™**

The Green Machine®

HMC, Inc.,
20710 SOUTH ALAMEDA • LONG BEACH, CALIFORNIA • PHONE (213) 603-9888 • TELEX 696396