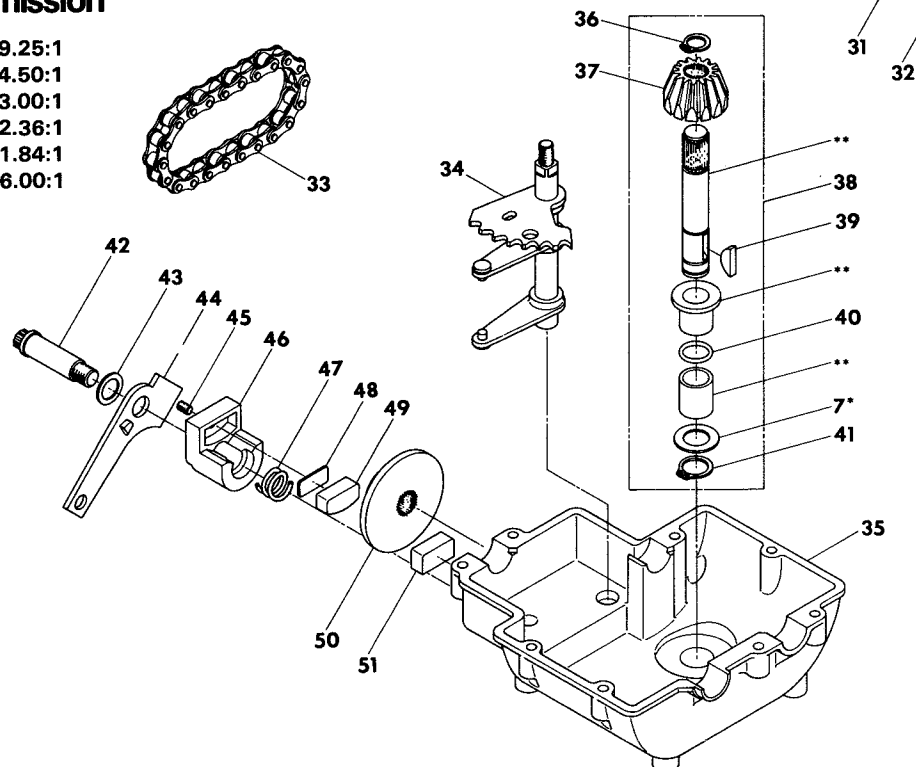
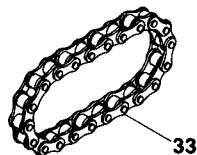


# MODEL 4100

## 5 Speed Transmission

GEAR RATIO:	1st	9.25:1
	2nd	4.50:1
	3rd	3.00:1
	4th	2.36:1
	5th	1.84:1
	Rev.	6.00:1



## PARTS LIST

KEY NO.	J.B. FOOTE PART NO.	NO. REQ'D.	DESCRIPTION	TRANSMISSION MODELS PARTS USED ON
1	3665-A	1	Housing, Upper	4100-2
2	1151	1	Ball, Detent	4100-2
3	3626	1	Spring, Detent	4100-2
4	3623	1	Screw, Set, 5/16-18 x .50 Lg.	4100-2
5	1919	8	Screw, Tapping, 1/4-20 x .734 Lg.	4100-2
6	1101	4	Bearing, Flange	4100-2
7	1082	*	Washer, Plain, .632 x 1.00 x .031	4100-2
7	1424	*	Washer, Plain, .632 x 1.00 x .036	4100-2
7	1068	*	Washer, Plain, .632 x 1.00 x .041	4100-2
7	1425	*	Washer, Plain, .632 x 1.00 x .046	4100-2
7	1358	*	Washer, Plain, .632 x 1.00 x .050	4100-2
7	1145	*	Washer, Plain, .632 x 1.00 x .060	4100-2
7	1319	*	Washer, Plain, .632 x 1.00 x .082	4100-2
8	3639	1	Gear, Bevel, 42T.	4100-2
9	3645	1	Sprocket, 9T.	4100-2
10	3630	1	Spacer, .781 x 1.00 x .281	4100-2
11	3646	1	Gear, Spur, 12T.	4100-2
12	3637	1	Gear, Spur, 20T.	4100-2
13	3647	1	Gear, Spur, 25T.	4100-2
14	3648	1	Gear, Spur, 28T.	4100-2
15	3683	1	Gear, Spur, 31T.	4100-2
16	3632	1	Shaft, Drive	4100-2
17	1145	1	Washer, Plain, .640 x 1.00 x .060	4100-2
18	3631	1	Collar, Clutch	4100-2
19	3676	2	Key, Clutch	4100-2
20	3635	1	Shaft, Output	4100-2
21	3627	1	Ring, Retaining	4100-2
22	3640	1	Sprocket, 18T.	4100-2
23	3629	1	Spacer, 1.134 x 1.500 x .312	4100-2
24	3649	1	Gear, Spur, 37T.	4100-2
25	3622	4	Washer, Special	4100-2
26	3644	1	Gear, Spur, 30T.	4100-2
27	3643	1	Gear, Spur, 25T.	4100-2
28	3642	1	Gear, Spur, 22T.	4100-2
29	3682	1	Gear, Spur, 19T.	4100-2
30	3628	1	Washer, Plain, .640 x 1.37 x .061	4100-2
31	3650	1	Sprocket, 8T.	4100-2
32	1300	1	Ring, Retaining	4100-2
33	3625	1	Chain, 24 Pitches	4100-2
34	4088	1	Assembly, Shifter	4100-2
35	3664-E	1	Housing, Lower	4100-2
36	3624	1	Ring, Retaining	4100-2
37	3590	1	Pinion, Bevel, 14T.	4100-2
38	4135	1	Assembly, Kit, Input Shaft	4100-2
39	1374	1	Key, Woodruff, #9	4100-2
40	1926	1	O-Ring	4100-2
41	1099	1	Ring, Retaining	4100-2
42	1477	1	Bolt, Shoulder	4100-2
43	1546	1	Washer, Plain, .510 x .750 x .006	4100-2
44	2757	1	Assembly, Lever, Actuating	4100-2
45	1606	1	Screw, Set, -8-32 x .312 Lg.	4100-2
46	2618	1	Assembly, Jaw, Brake	4100-2
47	1479	1	Spring, Compression	4100-2
48	3293	1	Spacer	4100-2
49	3242	1	Puck, Friction	4100-2
50	3660	1	Disc, Brake	4100-2
51	3404	1	Puck, Friction	4100-2

\* Use in various combinations to maintain proper clearances.

\*\* Order Key No. 38

KEY NO.	FOOTE PART NO.	NO. REQ'D.	DESCRIPTION	TRANSMISSION MODELS PARTS USED ON	KEY NO.	FOOTE PART NO.	NO. REQ'D.	DESCRIPTION	TRANSMISSION MODELS PARTS USED ON
1	4204	1	Ass'y., Kit, Upper Housing	4100-5					
1	4241	1	Ass'y., Kit, Upper Housing	4100-6, 4100-9					
2	1151	1	Ball, Detent	4100-5					
2	1037	2	Ball, Detent	4100-6, 4100-9					
3	3626	1	Spring, Detent	4100-5					
3	3720	2	Spring, Detent	4100-6, 4100-9					
4	3623	1	Screw, Set, 5/16 - 18 x .50	4100-5					
4	3239	2	Screw, Set, 1/4 - 20 x .50	4100-6, 4100-9					
5	1919	8	Screw, Set, 1/4 - 20 x .734	All Models					
6	1101	4	Bearing, Flange	All Models					
7	1082	*	Washer, Plain, .632 x 1.00 x .031	All Models					
7	1424	*	Washer, Plain, .632 x 1.00 x .036	All Models					
7	1068	*	Washer, Plain, .632 x 1.00 x .041	All Models					
7	1425	*	Washer, Plain, .632 x 1.00 x .046	All Models					
7	1358	*	Washer, Plain, .632 x 1.00 x .050	All Models					
7	1145	*	Washer, Plain, .632 x 1.00 x .060	All Models					
7	1319	*	Washer, Plain, .632 x 1.00 x .082	All Models					
8	3639	1	Gear, Bevel, 42 T.	All Models					
9	3746	1	Spacer, .781 x 1.00 x .812	All Models					
10	1926	1	O-Ring	All Models					
11	3646	1	Gear, Spur, 12 T.	All Models					
12	3637	1	Gear, Spur, 20 T.	All Models					
13	3719	1	Gear, Spur, 25 T.	All Models					
14	3683	1	Gear, Spur, 31 T.	All Models					
15	3714	1	Spacer, .781 x 1.00 x .375	All Models					
16	3632	1	Shaft, Drive	All Models					
17	1145	1	Washer, Plain, .632 x 1.00 x .060	All Models					
18	3631	1	Collar, Clutch	All Models					
19	3676	2	Key, Clutch	All Models					
20	3635	1	Shaft, Output	All Models					
21	3748	1	Spacer, 1.134 x 1.50 x .685	All Models					
22	3627	1	Ring, Retaining	All Models					
23	4240	1	Ass'y., Kit, Spacer	All Models					
24	3649	1	Gear, Spur, 37 T.	4100-5					
24	3786	1	Gear, Spur, 37 T.	4100-6, 4100-9					
25	3622	3	Washer, Special	4100-5					
26	3644	1	Gear, Spur, 30 T.	4100-5					
26	3784	1	Gear, Spur, 30 T.	4100-6, 4100-9					
27	3643	1	Gear, Spur, 25 T.	4100-5					
27	3783	1	Gear, Spur, 25 T.	4100-6, 4100-9					
28	3741	1	Gear, Spur, 19 T.	All Models					
29	3715	1	Spacer, 1.133 x 1.50 x .375	All Models					
30	3628	1	Washer, Plain, .640 x 1.50 x .061	All Models					
31	3650	1	Sprocket, 8 T.	All Models					
32	1300	1	Ring, Retaining	All Models					
33	1099	1	Ring, Retaining	All Models					
34	4088	1	Ass'y., Shifter	4100-5					
34	4146	1	Ass'y., Shifter	4100-6					
34	4221	1	Ass'y., Shifter	4100-9					
35	3664-E	1	Housing, Lower	All Models					
36	3624	1	Ring, Retaining	All Models					
37	3590	1	Pinion, Bevel, 14 T.	All Models					
38	4135	1	Ass'y., Kit, Input Shaft	All Models					
39	1374	1	Key, Woodruff, #9	All Models					
40	3789	1	V-Ring	4100-6, 4100-9					
41	4300	1	Grease	All Models					

\* Use in various quantities to maintain proper clearances.

\*\* Order Key No. 38